

**DARE TO COMPARE
16,000-20,000 LB
CAPACITY LIFTS**

MOHAWK LIFTS

Mohawk Lifts
vs.
The Competition



25
YEAR
WARRANTY



COLUMN COMPARISON

Mohawk Forklift Mast / “[” Channel Column Design vs
Bent Sheet Metal, Double “S” Design.

3/4” High
Strength Forklift
Mast Section

Bent Sheet
Metal

**ROTARY
LIFT**

ML

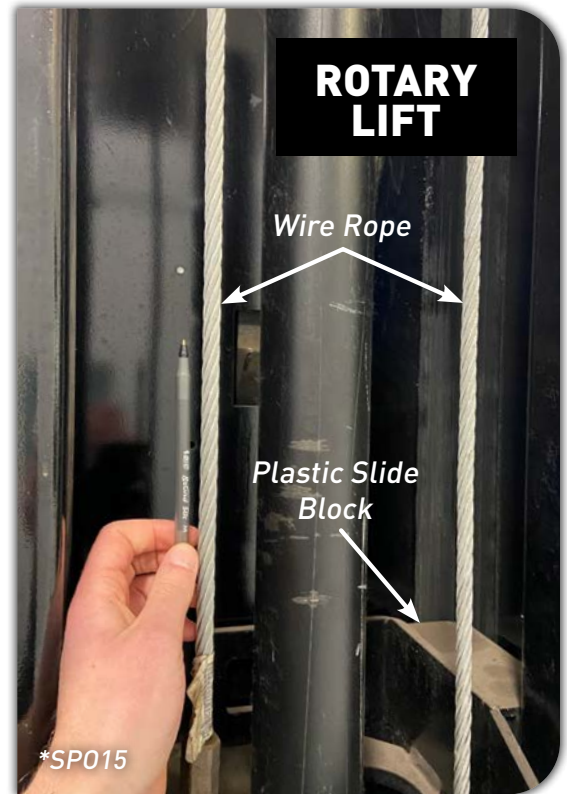
CHALLENGER LIFT



*Column designs are exemplary. Shown
is SP012 12,000 lb. Column inside a
Mohawk 10,000 lb. System-1A Column

#2

DIRECT DRIVE VS. CABLE DRIVE



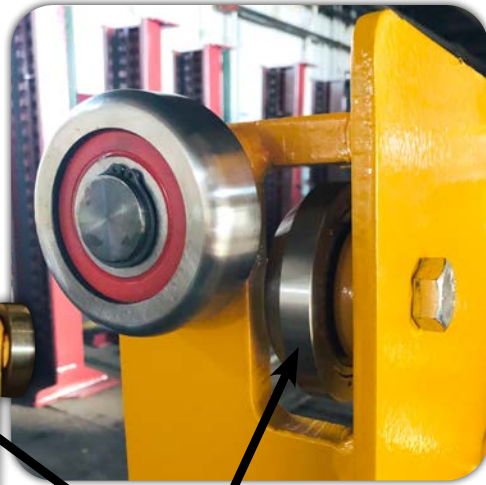
Hydraulic vs. Cable Synchronization

A full hydraulic system—as opposed to a stretchable, adjustable, wire rope / cable equalization system—ensures the safest, most level rise. When lifting heavy vehicles with uneven weight distribution, a direct-hydraulic synchronization system is superior.

Get more info at [MohawkLifts.com/Equalization](https://www.MohawkLifts.com/Equalization)

#3

MOHAWK LIFTS



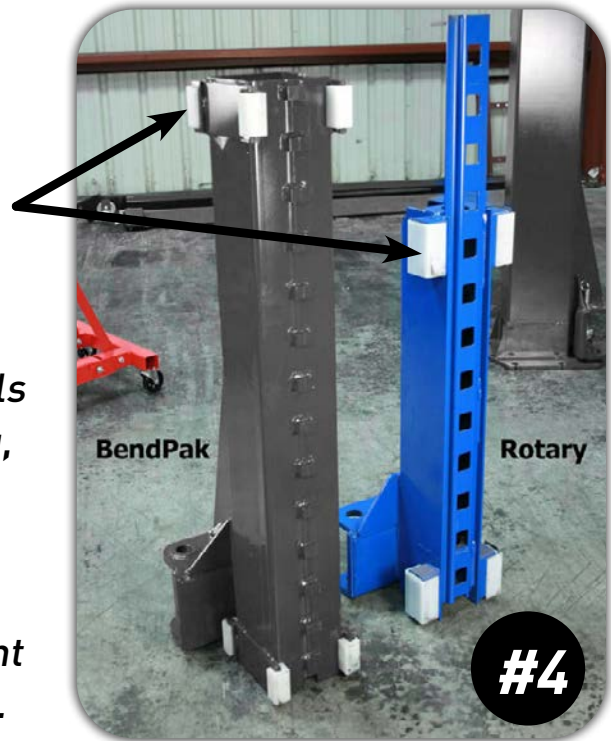
CARRIAGE DESIGN

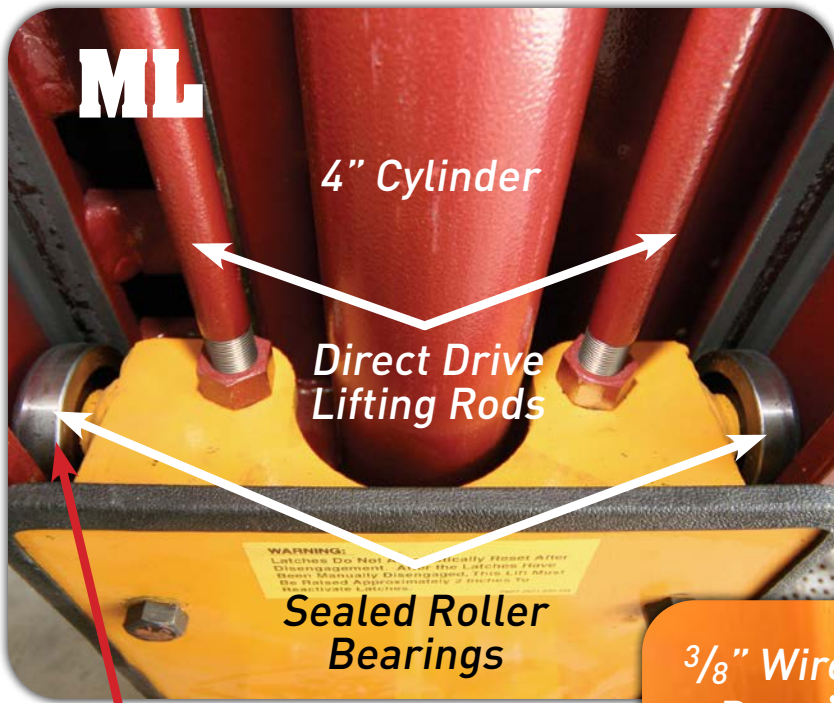
**Competitive images below are of 10,000 lb. capacity lifts*



Side Load Bearings
vs.
Plastic Slide Blocks

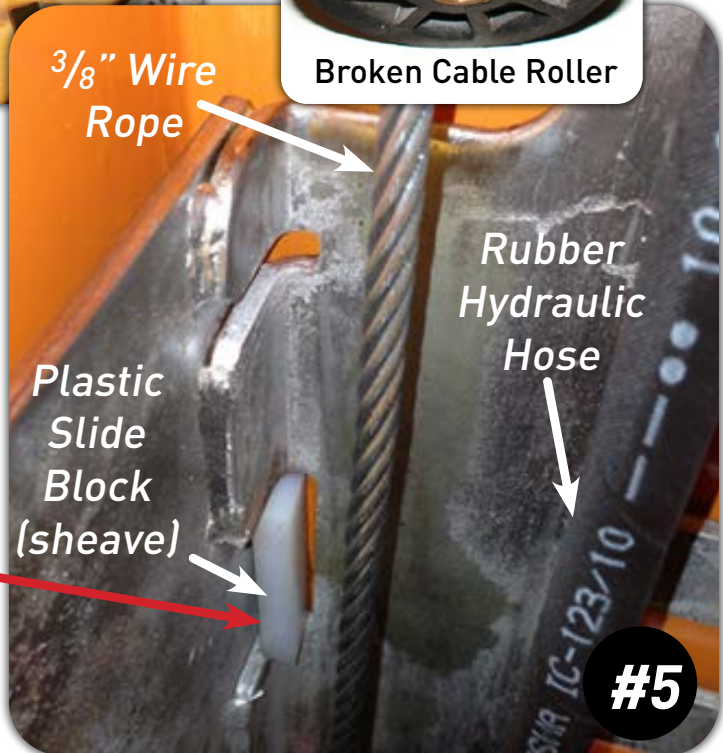
Unlike other lifts, Mohawk carriage rolls on (8) 4" double sealed, self lubricating, heavy duty ball bearing rollers for a lifetime of trouble-free service. Competitors use plastic slide blocks (shown in white), which require frequent replacement (typically every 3-5 years).





LIFT COMPONENTS

Wire Rope, Plastic Cable Roller, Plastic Slide Block & Rubber Hose



- Sealed roller bearings
 - Stainless steel hydraulic lines
 - Direct drive lifting rods
- VS.**
- Plastic sliders
 - Plastic cable rollers
 - Rubber hydraulic hoses
 - Wire rope

#5

OVERHEAD OBSTRUCTIONS

Bent overhead cable cover



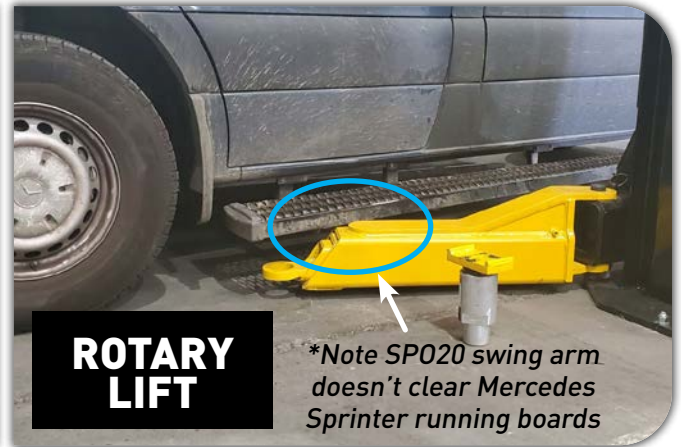
Mohawk offers adjustable overhead or in-floor hydraulic lines (shown) for all your lifting needs or for low ceiling shops.



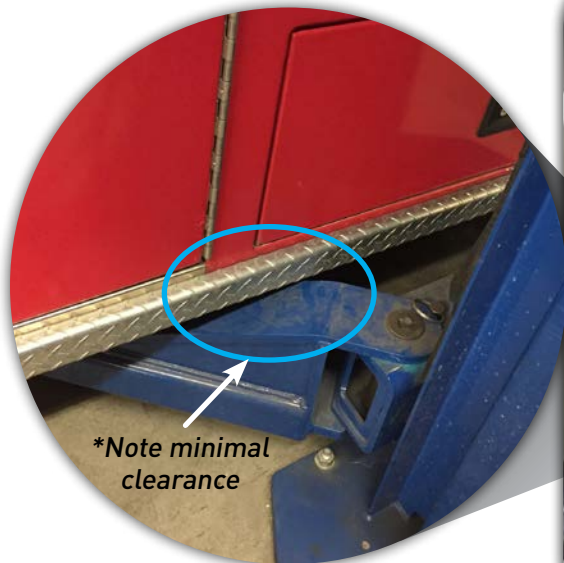
*Other lifts have fixed overhead cable covers which **limit lifting height.***



SWING ARM CLEARANCE

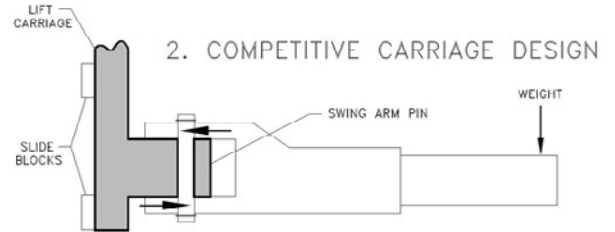
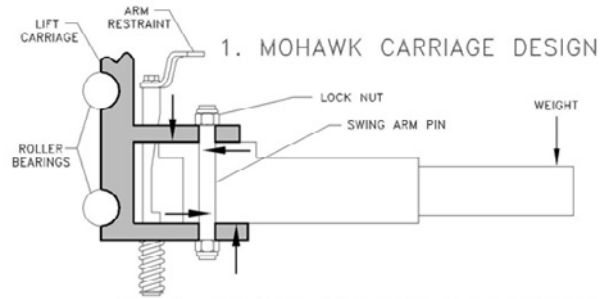


Mohawks' low profile 4.5" swing arms fit under most passenger cars, and low riding or wide body vehicles. Competitive lift pad heights are ~6", and arm slopes/tubes are too high to fit under many widebody boxes, running boards, fuel tanks, etc.



#7

CARRIAGE DESIGN MATTERS



Mohawk carriage grips the arm distributing the load throughout vs. lower quality lifts with the majority of shearing force on the arm pin.



WEARABLE COMPONENTS



Competitor Lifts Components



Broken,
Low-Grade
Cable Bolt

10,000 lb. capacity lift shown



Broken
Plastic Cable
Roller

*The competition use wire ropes/cables, plastic pulleys, rubber hoses, plastic slide blocks that all wear out needing regular maintenance and replacement. Mohawks' sealed roller bearings, stainless steel hydraulic lines and direct drive lifting rods are designed to **LAST A LIFETIME.***

#9

WARRANTY

ITEM	MOHAWK	COMPETITORS
Structural	25 years	1-5 years
Mechanical	10 years	1 year
Hydraulic Cylinders	5 years	1-2 years
Cylinder Seals	Lifetime, Orig. Owner	1 year
Power Unit	2 years	1-2 years
Electrical Components	1 year	1 year

COST OF REPLACEMENT

MOHAWK	COMPETITORS	FREQUENCY	PART COST	SERVICE COST*	TOTAL COST*	DOWNTIME COSTS
NONE <hr/> <hr/>	Plastic Slide Blocks	2-5 years	\$60-\$100/set	\$500-\$1000	\$560-\$1100	\$150-\$250/ hour
	Rubber Hoses	0-5 years	\$200-\$400/set	\$200-\$500	\$400-\$900	
	Wire Ropes	2-4 years	\$200-\$500/set	\$200-\$500	\$400-\$800	
	Cable Rollers	3-5 years	\$30-\$60/pair	\$200-\$500	\$230-\$560	
	Power Unit	0-10 years	\$500-\$1000	\$200-\$500	\$700-\$1500	

TOTAL COST OF OWNERSHIP - 10 YEARS**

Mohawk Two-Post Lift: \$0.00 (10 year Mechanical Warranty)

Competitive Two-Post Lift: \$3,000++

*Service cost may or may not include dispatch and mileage. Surveyed by lift service companies nationally.

** Expected/estimated



PICKING THE RIGHT CAPACITY TWO-POST LIFT FOR YOUR FLEET

Each arm on a two-post lift is only rated to 1/4 capacity of the lift

Knowing your truck's rear axle weight is critical to specifying the right two-post lift capacity for your shop. Never exceed maximum capacity per swing arm.



Model	RAWR (lbs)	Percent of Rear Axle Weight Capacity Utilized				
		50%	60%	70%	80%	90%
F350 SRW	7,230	3,615	4,338	5,061	5,784	6,507
<i>Min Req'd Two-Post Lift</i>		10,000lb	10,000lb	12,000lb	12,000lb	16,000lb
F350 DRW	10,040	5,020	6,024	7,028	8,032	9,036
<i>Min Req'd Two-Post Lift</i>		12,000lb	16,000lb	16,000lb	18,000lb	20,000lb
F450/F550	13,660	6,830	8,196	9,562	10,928	12,294
<i>Min Req'd Two-Post Lift</i>		16,000lb	18,000lb	20,000lb	26,000lb	30,000lb

RAWR* = Rear Axle Weight Rating, i.e. Rear-Axle Max Capacity

SRW* - Single Rear Wheel; DRW* - Dual Rear Wheel, i.e. Dually

Min Req'd Two-Post Lifts - Based on max capacity of lift's two rear arms, or 1/2 the lift's total capacity

CYLINDER SIZE COMPARISON

Mohawk's large 4" cylinders equal a longer seal, cylinder, motor and pump life vs higher operating pressure of small cylinders.



All 4 cylinders shown are from 10,000 lb. models

*Mohawk Lifts have a **LIFETIME** warranty on cylinder seals. Competitors only have 12 months.*

#12

THE US NAVY DOESN'T TRUST WIRE ROPES



NAVFAC Vertical Transportation Equipment Program

NAVFAC VTE Program Safety Directive AL-2013.01

12 April 2013

SUBJ: AUTOMOTIVE LIFT SURVEY OF SUSPENSION WIRE ROPE

Primary Responsibility: NAVFAC VTE Program Lead Certifying Officials, Navy Wide

Encl: (1) NAVFAC Mid-Atlantic Safety Office Near-Miss Notice
(2) NAVFAC VTE Program Safety Survey 12 April 2013

1. On 29 March 2013, Encl (1) was issued as a result of catastrophic failure of the wire rope suspension means on a **BRAND INTENTIONALLY OMITTED** automotive lift in Norfolk, VA. The lift design utilizes steel wire ropes to raise and lower the vehicle ...

Daily: Check cables and sheaves for wear. Observe for frayed cable strands. Wipe cables with a rag to detect hard to see small broken cable strands. Replace cables showing any broken strands. Replace worn parts as required with genuine Rotary parts.

Operating Manual - Cable Equalized Lift



Equalization cables on competitive lifts fray, requiring daily inspections and frequent maintenance

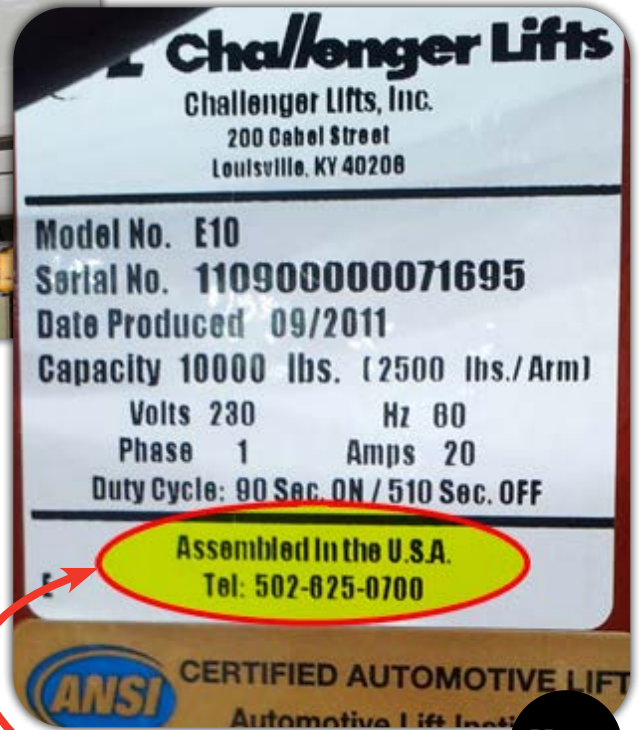
#13

MADE IN THE USA OR OFFSHORE?



Made in China

All Mohawk two post lifts are designed, welded, and manufactured in the U.S.A. while other lift brands are made in communist China or only assembled in the U.S.A. from Chinese parts.



What does this mean to you?

#14

MOHAWK TWO POST ACCESSORIES



Shown:
TP-16
Accessory
#601-440-
017

SAFETY WEIGHT GAUGE

Shows techs lift has been lowered on mechanical locks and aids in vehicle diagnosis



Shown: System
IA-10 Accessory
#016-011-012

STORAGE ADAPTER

Converts quickly between frame and wheel engaging, ideal for vehicle storage, takes up less room than a 4-post lift



Shown: System IA-10
Accessory #009-012-001

DUAL TROUGH TURF KIT

The only lift made (or designed) for both vehicle service and turf maintenance equipment



Shown: System IA
Accessory #Z2757-D

DRIVE-ON ADAPTER

No wasted time positioning swing arms, wheels and tires hang free for easy maintenance with full under-car access

#15

MOHAWK LIFTS

- *Heaviest Built*
- *The Longest Warranty*
- *US Made*
- *Widest or Narrowest Lift*
- *Lowest Ceiling Required*

***Before You Buy Any Lift
See a Mohawk Lift***

Check out how a Mohawk Lift is made here:
www.MohawkLifts.com/2Post-Construction

Call or visit Mohawk at:

1-800-833-2006

www.MohawkLifts.com

Mohawk Lifts is a trademark of Mohawk Lifts LLC.,
which is not affiliated with the competitors included in this
comparative advertisement.