

# MOHAWK LIFTS

**DARE TO COMPARE  
10,000-12,000 LB  
CAPACITY LIFTS**

Mohawk Lifts vs. The Competition



**25**  
YEAR  
WARRANTY

**ROTARY  
LIFTS**

*2 Year Warranty*

**CHALLENGER  
LIFTS**

*2 Year Warranty*

# COLUMN COMPARISON

12,000 lb. capacity Rotary column lying  
inside a 10,000 lb. capacity Mohawk Lift

3/4" High  
Strength Forklift  
Mast Section

Bent Sheet  
Metal

**ROTARY  
LIFT**

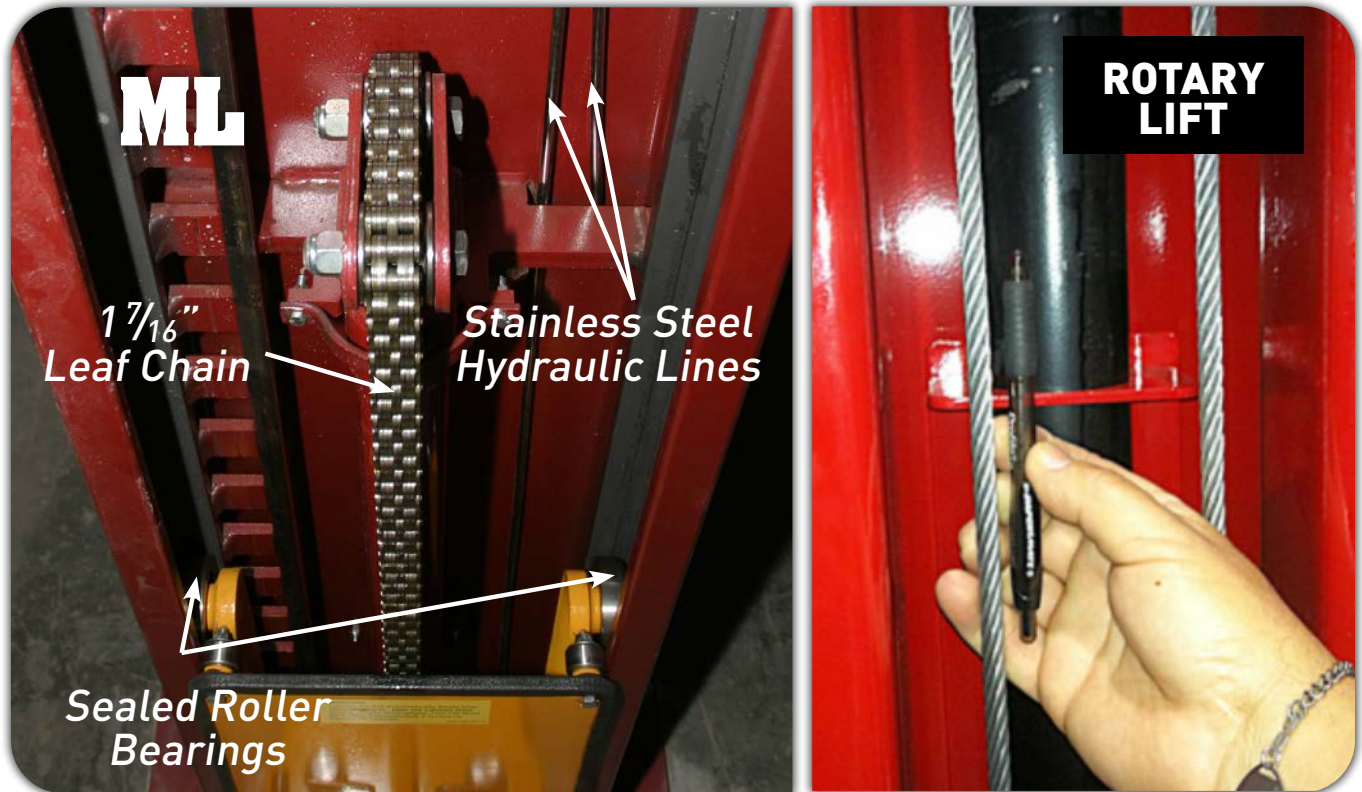
**ML**

**CHALLENGER LIFT**

**#2**



# HYDRAULIC VS. CABLE SYNCHRONIZATION



*A full hydraulic system—as opposed to a stretchable, adjustable, wire rope / cable equalization system—ensures the safest, most level rise. When lifting heavy vehicles with uneven weight distribution, a direct-hydraulic synchronization system is superior.*

**Get more info at [MohawkLifts.com/Equalization](https://MohawkLifts.com/Equalization)**

**#3**

# THE US NAVY DOESN'T TRUST WIRE ROPES



## NAVFAC Vertical Transportation Equipment Program

### NAVFAC VTE Program Safety Directive AL-2013.01

12 April 2013

SUBJ: AUTOMOTIVE LIFT SURVEY OF SUSPENSION WIRE ROPE

Primary Responsibility: NAVFAC VTE Program Lead Certifying Officials, Navy Wide

Encl: (1) NAVFAC Mid-Atlantic Safety Office Near-Miss Notice  
(2) NAVFAC VTE Program Safety Survey 12 April 2013

1. On 29 March 2013, Encl (1) was issued as a result of catastrophic failure of the wire rope suspension means on a **BRAND INTENTIONALLY OMITTED** automotive lift in Norfolk, VA. The lift design utilizes steel wire ropes to raise and lower the vehicle ...

Daily: Check cables and sheaves for wear. Observe for frayed cable strands. Wipe cables with a rag to detect hard to see small broken cable strands. Replace cables showing any broken strands. Replace worn parts as required with genuine Rotary parts.

Operating Manual - Cable Equalized Lift



*Equalization cables on competitive lifts fray, require daily inspections and need frequent maintenance*

**#4**

# LIFTING CHAINS VS. CABLES



*Challenger and Rotary lifts use cables, which stretch, fray, and have cable sheaves, which need frequent replacement. Mohawk chains are guaranteed for 10 years.*

## SWING ARM DEFLECTION



*Both vehicles are Chevy Silverado's yet arms on the left are at a 90 degree angle while the other brand droops down*

**#5**

# COLUMN WEIGHT

10,000 lb.  
Mohawk Lift  
System 1A

**MOHAWK  
LIFTS**



612 lbs.



**VS.**

12,000 lb.  
Rotary Lift  
SP012

**ROTARY LIFT**



331 lbs.

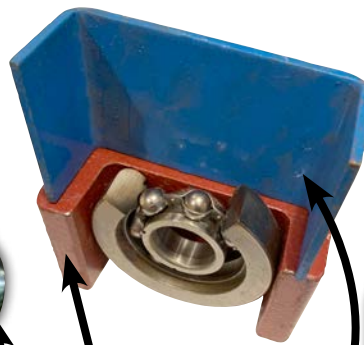


**#6**

# MOHAWK LIFTS



1" Thick  
Steel Plate  
Safety Lock

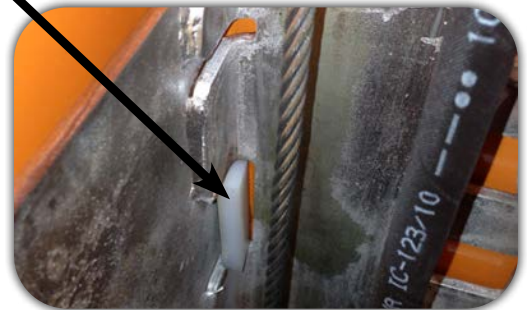


Forklift Channel  
vs.  
Bent Sheet  
Metal

# CARRIAGE DESIGN



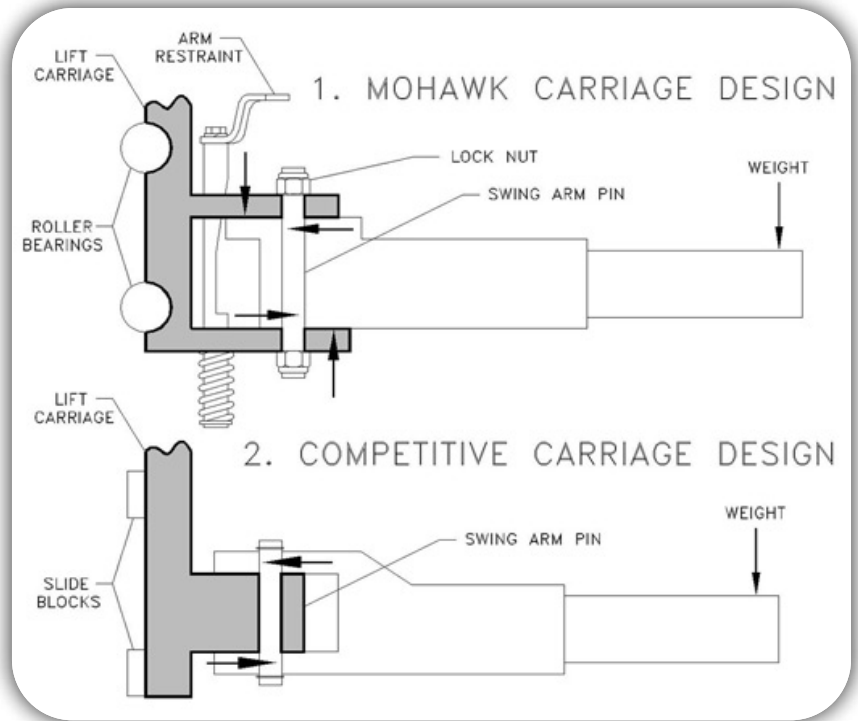
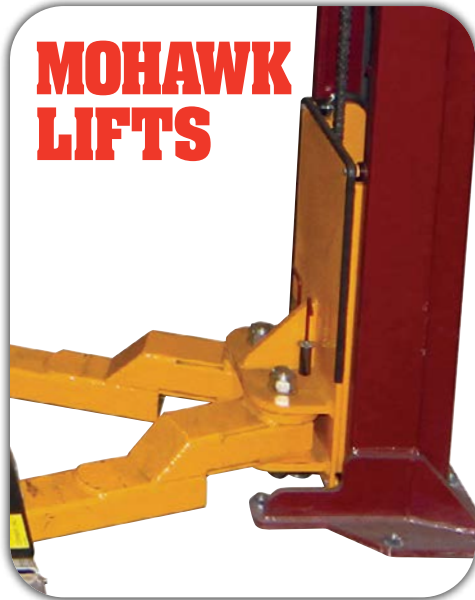
Roller Bearings  
vs.  
Plastic Slide  
Blocks



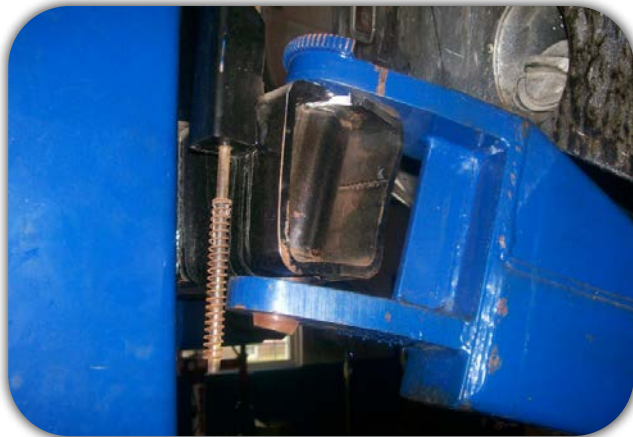
*Unlike other lifts, each Mohawk carriage rolls on (4) 4" main and (4) cam follower, double sealed, self lubricating, heavy duty ball bearing rollers for a lifetime of trouble-free service. Competitors use plastic slide blocks (shown in white), which require frequent replacement (typically every 3-5 years).*

**#7**

# SWING ARMS



*Mohawk carriage grips the arm distributing the load throughout vs. lower quality lifts with the majority of shearing force on the arm pin.*





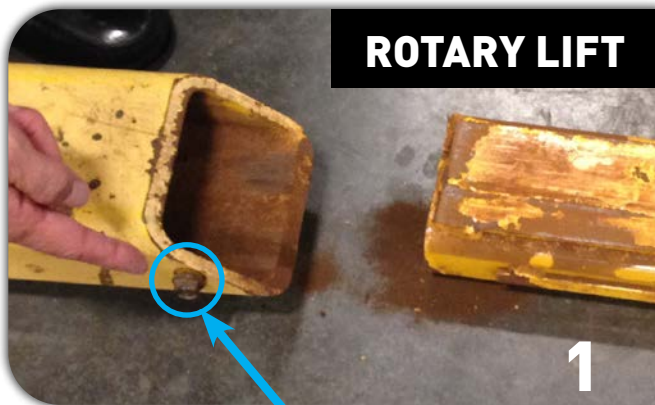
# SWING ARMS SLIDERS



1. Swing arm slider stop malfunction based on bolt backing out.

2. Metal structure failer due to poor design.

Both of these are impossible to happen on a Mohawk due to a full 360° welded end cap around the arm.



This bolt needs to be tightened or the slider can slide out of the arm



Torn Steel, not reinforced like Mohawk Lifts

#9

# WEARABLE COMPONENTS



## Competitor Lifts Components



Broken,  
Low-Grade  
Cable Bolt



Broken  
Plastic Cable  
Roller

*Most lifts use wire ropes/cables, plastic pulleys, rubber hoses, and plastic slide blocks that all wear out and need regular replacement. Mohawks' sealed roller bearings, stainless steel hydraulic lines and lifting rods simply DON'T wear out.*

**#10**

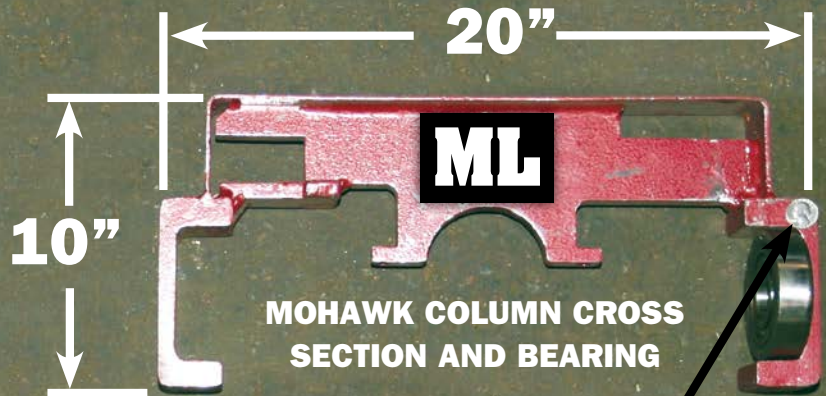
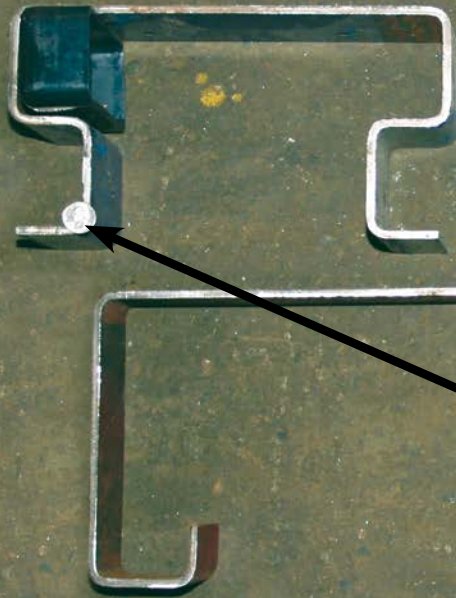
# CYLINDER SIZE COMPARISON

*Mohawk's large 4" cylinders equal a longer seal, cylinder, motor and pump life vs higher operating pressure of small cylinders.*



# LIFT COLUMN CROSS SECTIONS

FORMER ROTARY MODEL  
SPO-88 WHEN ROTARY USED  
THICKER STEEL



MOHAWK COLUMN CROSS  
SECTION AND BEARING



*Mohawk's forklift channel & bearing (top right) vs. 3 different sheet metal columns that use plastic sliders. Like a forklift mast, Mohawk lifts are built to **NOT WEAR OUT!** Note the U.S. quarters on all four pieces (for scale).*

**#12**

# COLUMN FOOTPRINT



**MOHAWK LIFTS**

*Mohawk's 29" wide and stable footprint uses 8 anchors vs. smaller footprints with less anchors. Note 4 anchor bolt holes across the critical rear vs. 2 anchor bolt holes.*



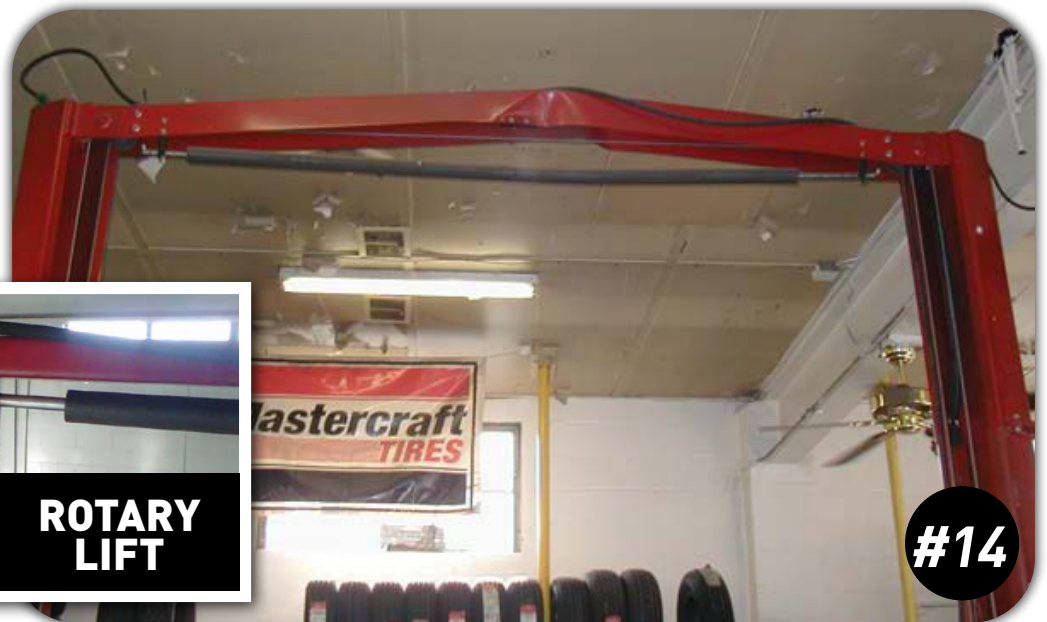
**CHALLENGER  
LIFT**

10000LBS TWO POST LIFT  
C/NO  
MADE IN CHINA

**#13**

# OVERHEAD OBSTRUCTIONS

*Fixed overhead shutoffs limit lifting height. Mohawk offers adjustable overhead or in-floor lines (shown) for all your lifting needs and low ceiling shops.*



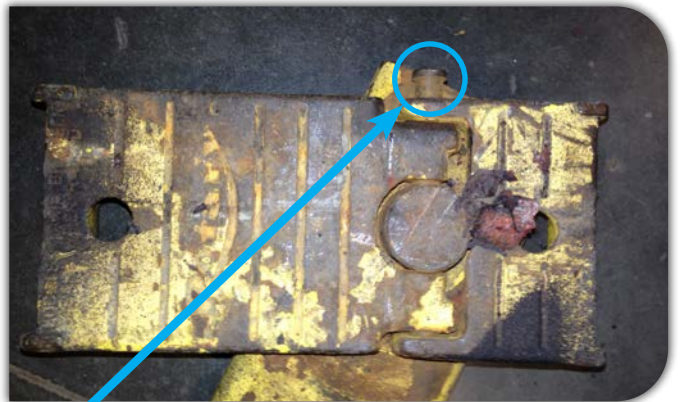
**ROTARY  
LIFT**

**#14**

# LIFTING PADS



*Some of Mohawk's optional lifting pads*



*Shows broken pin & ability of flip up adaptor to come apart. Note pin backing out of flip pad.*

**#15**



## HEIGHT ADAPTERS

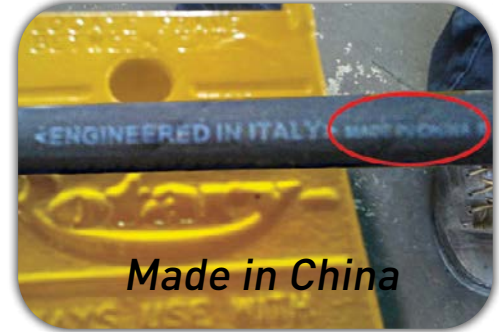
*All Mohawk two post lifts include ALI certified truck adapters (3", 5", 6", 7 1/2", and/or 10" depending on lift) standard vs. the other brands offering them at extra cost.*

**Mohawk 10,000 lb. lifts come with 3" and 6" stackable truck adapters.**

**Mohawk 12,000–20,000 lb. lifts come with 5", 7 1/2", and 10" height adapters (shown left).**



# MADE IN THE USA OR OFFSHORE?



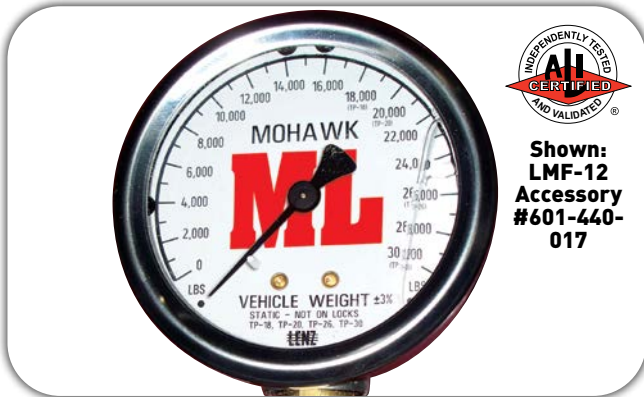
*All Mohawk two post lifts are designed, welded, and manufactured in the U.S.A. while other lift brands are made in communist China or only assembled in the U.S.A. from Chinese parts.*



What does this mean to you?

**#17**

# MOHAWK TWO POST ACCESSORIES



## SAFETY WEIGHT GAUGE

*Shows techs lift has been lowered on mechanical locks and aids in vehicle diagnosis.*



## STORAGE ADAPTER

*Converts quickly between frame and wheel engaging, ideal for vehicle storage, takes up less room than a 4-post lift.*



## DUAL TROUGH TURF KIT

*Designed as a traditional vehicle service lift or converts to a turf maintenance lift.*



## DRIVE-ON ADAPTER

*Eliminates wasted time positioning swing arms. Wheels and tires hang free for easy maintenance with full under-car access.*

**#18**

# MOHAWK LIFTS

- Heaviest Built
- The Longest Warranty
- US Made
- Widest or Narrowest Lift
- Lowest Ceiling Required

***Before You Buy Any Lift  
See a Mohawk Lift***

Check out how a Mohawk Lift is made here:  
[www.MohawkLifts.com/2Post-Construction](http://www.MohawkLifts.com/2Post-Construction)

***Call or visit Mohawk at:***

**1-800-833-2006**

**[www.MohawkLifts.com](http://www.MohawkLifts.com)**

Mohawk Lifts is a trademark of Mohawk Lifts LLC.,  
which is not affiliated with the competitors included in this  
comparative advertisement.