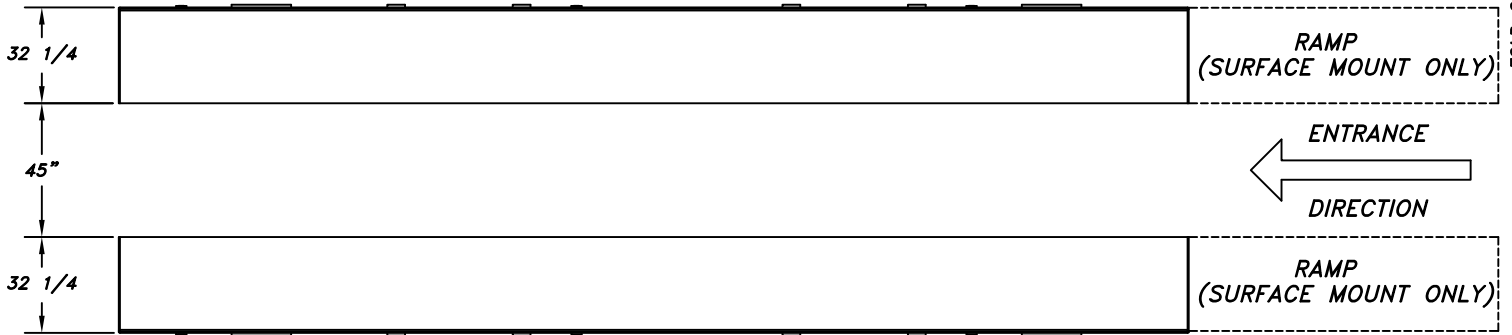


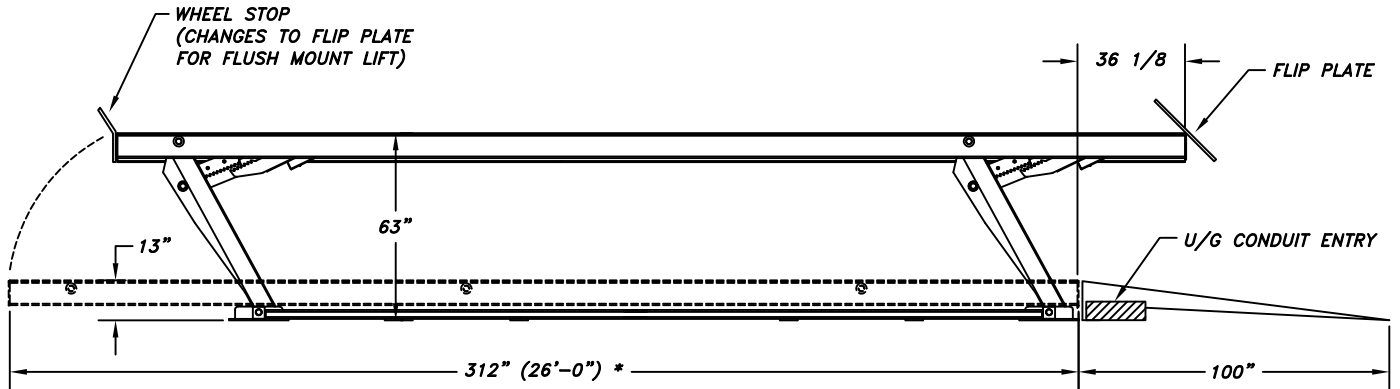
PARALLELOGRAM DATA SHEET: (PG1)

1. GENERAL LIFT DIMENSIONS



FOLD OR CUT HERE

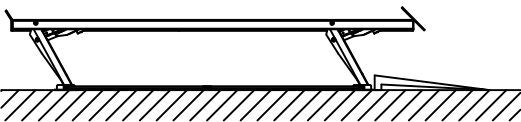
STANDARD LOCATION SHOWN
 OPTIONAL LOCATIONS AT CUSTOMERS REQUEST
 SEE INSTALLATION INSTRUCTIONS FOR ADDITIONAL SPECS
 (ADDITIONAL CHARGES WILL APPLY)



* 50-26-S (SURFACE MOUNT LIFT) SHOWN ABOVE AS EXAMPLE

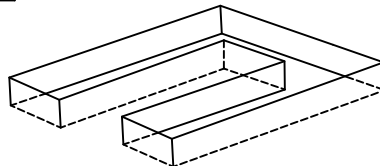
2. SELECT INSTALLATION STYLE:

SURFACE

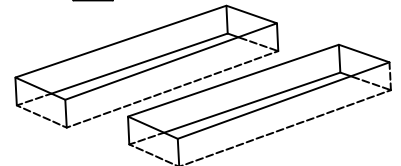


FLUSH - SELECT STYLE PIT BELOW (NO RAMPS)

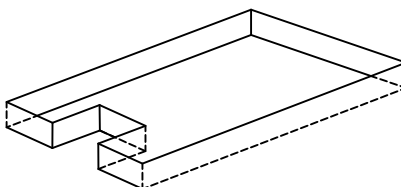
DUAL POCKET W/ JACK CAVITY



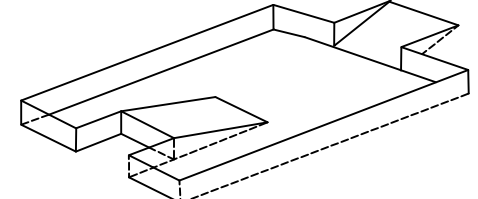
DUAL POCKET



SINGLE POCKET



SINGLE POCKET W/ WALKWAY



 - DENOTES LIFTS OR OPTIONS THAT HAVE BEEN TESTED AND CERTIFIED TO ALL STANDARD ALCTV.

PARALLELOGRAM DATA SHEET: (PG2)

FOLD OR CUT HERE

10. LIFT LOCATION DETAILS:
 PROVIDE SKETCH OF LIFT BAY BELOW
 WITH THE FOLLOWING GENERAL DIMENSIONS.

OVERALL BAY LENGTH

SLOPE IN FLOOR (LENGTHWISE)

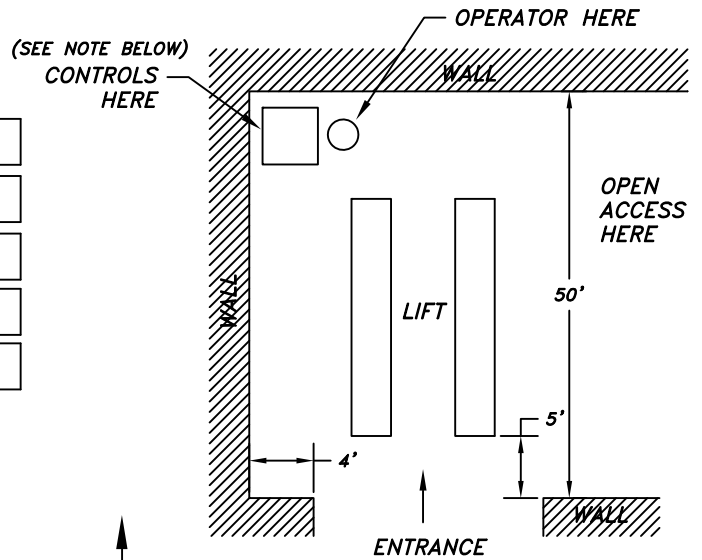
OVERALL BAY WIDTH

SLOPE IN FLOOR (WIDTHWISE)

OVERALL BAY HEIGHT

OVERHEAD OBSTRUCTIONS, YES OR NO?
 IF YES, EXPLAIN _____

FOR EXAMPLE:

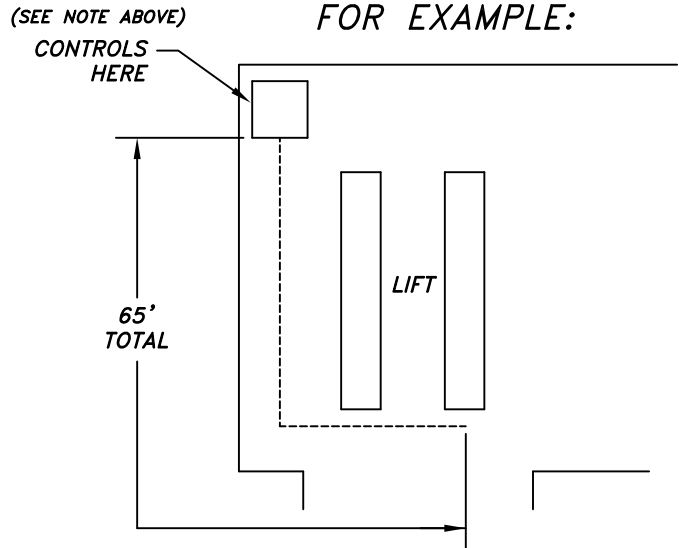


NOTE:
 ABOVE & BELOW PICTURES SHOW CONSOLE
 IN REMOTE LOCATION, REQUIRING ADDITIONAL
 COST FOR LONGER HYDRAULIC & ELECTRICAL
 SERVICES. CONTACT MOHAWK RESOURCES FOR
 STANDARD CONSOLE LOCATION.

11. UNDERGROUND CONDUIT DETAILS:
 PROVIDE MAXIMUM LENGTH OF
 UNDERGROUND CONDUIT FROM
 CONTROL CONSOLE TO LIFT.

MAXIMUM LENGTH

FOR EXAMPLE:



12. VEHICLE DATA FORMS:
 PROVIDE INFORMATION ON ATTACHED VEHICLE DATA FORMS (OR PROVIDE SKETCH WITH DIMENSIONS
 OF VEHICLE IF THE FORM DOES NOT PROPERLY REFLECT VEHICLE TYPE) FOR VEHICLES INTENDED TO
 GO ON THIS LIFT. THIS IS TO ENSURE THAT VEHICLES WILL HAVE NO DIFFICULTY GETTING ON THE
 LIFT AND THAT THE LIFT WILL HAVE NO DIFFICULTY RAISING THE VEHICLES IN THE SPACE PROVIDED.
 PROVIDE DETAILS ON ANY FEATURES OF VEHICLES THAT ARE OF CONCERN. TO NAME JUST A FEW,
 THIS WILL ASSIST IN REVIEWING UNDER-VEHICLE CLEARANCE OVER RAMPS, BUMPER CLEARANCE
 APPROACHING RAMPS, REAR END DRAG CLEARANCE OVER RAMPS, OVERHEAD CLEARANCE WHEN FULLY
 RAISED, WHEEL BASE LENGTH OVER TRACK LENGTH, ETC..

REV.	DESCRIPTION	DATE	BY	APP'D.
	REMOVED PRICING, ADDED "SHOP MANAGER" TO SIGN OFF LIST	2/2014	G.GORE	

13. SHIMS REQUIRED.

EXAMINE FLOOR FOR FLATNESS. DETERMINE HOW MUCH SHIMMING WILL BE REQUIRED.
 NOTE THAT IF THE SHIMMING IS IN EXCESS OF 1/2 INCH, IT IS RECOMMENDED TO USE BASE PLATES.
 THESE SHIMS ARE NOT INCLUDED WITH A STANDARD LIFT AND WILL BE AN ADDITIONAL CHARGE
 AS SHOWN BELOW.

QTY	PART NUMBER	DESCRIPTION
	P-800-A-022	WASH BAY KIT (4 LEG LIFT)
	P-800-A-023	WASH BAY KIT (6 LEG LIFT)
	P-800-A-024	WASH BAY KIT (8 LEG LIFT)
	P-800-A-025	WASH BAY KIT (4 LEG LIFT)
	P-800-A-026	WASH BAY KIT (6 LEG LIFT)
	P-800-A-027	WASH BAY KIT (8 LEG LIFT)
	P-060-P-002	BASE PLATE, 1/2" THICK (Carbon Steel)
	P-060-P-004	STRINGER PLATE, 1/2" THK (Carbon Steel)
	600-740-001	HORSESHOE SHIM, 1/16" THK (BLUE)
	600-740-002	HORSESHOE SHIM, 1/8" THK (RED)
	600-740-003	HORSESHOE SHIM, 1/4" THK (BLACK)
	600-710-010	STEEL WASHER, 1" DIA x 3/16" THK
	600-670-002	ANCHOR BOLT, 3/4 DIA x 5" LG (STANDARD)
	600-670-003	ANCHOR BOLT, 3/4 DIA x 6" LG
	600-670-004	ANCHOR BOLT, 3/4 DIA x 8 1/2 LG
	600-670-011	ANCHOR BOLT, 3/4 DIA x 5 1/2 LG (Stainless Steel)
	P-060-P-006	BASE PLATE, 1/2" THICK (Stainless Steel)
	P-060-P-007	STRINGER PLATE, 1/2" THK (Stainless Steel)

CONTACT MOHAWK RESOURCES FOR CURRENT PRICING.

* ADDITIONAL BASE PLATE SHIMS AND/OR GROUTING MAY REQUIRE LONGER ANCHOR BOLTS.

14. A: FINAL ELECTRICAL CONNECTION TO LOCAL/NATIONAL CODE IS THE RESPONSIBILITY OF THE ELECTRICAL CONTRACTOR. MORE THAN ONE POINT OF CONNECTION MAY BE REQUIRED. DISCONNECT SWITCHES, MAIN FUSES, AND MAIN POWER LEADS, ETC, ARE NOT PROVIDED BY MOHAWK RESOURCES, LTD
- B: PNEUMATIC POWER IS THE RESPONSIBILITY OF THE MECHANICAL CONTRACTOR TO THE FINAL DESIGNATED POINT OR POINTS AT THE VEHICLE LIFT UNLESS OTHERWISE SPECIFIED BY ARCHITECT.

CUSTOMER'S INITIALS HERE:
↓

15. AFTER ALL SPECIFICATIONS HAVE BEEN SELECTED AND APPROVED BY CUSTOMER (SIGNED), MAKE COPY FOR CUSTOMER AND RETURN SIGNED FORM TO MOHAWK RESOURCES, LTD, PO BOX 110, AMSTERDAM, NY, 12010. FOR QUESTIONS, PLEASE CALL MOHAWK AT 1-(800)-833-2006 OR (518)-842-1431 OR FAX MOHAWK AT (518)-842-1289. ALL LIFT OPTIONS CHECKED FOR PURCHASE (SEE SECTION #4), MUST BE LISTED ON PURCHASE ORDER AS SEPARATE LINE ITEMS.

PG 2/2

PARALLELOGRAM

SCALE N/A	DRAWN dak	MOHAWK RESOURCES LTD.		
CHECKED	APPROVED	TITLE PARALLELOGRAM DATA VERIFICATION		
DATE 4/02	WEIGHT N/A	LB.	FROM	DRAWING NUMBER ZZ730

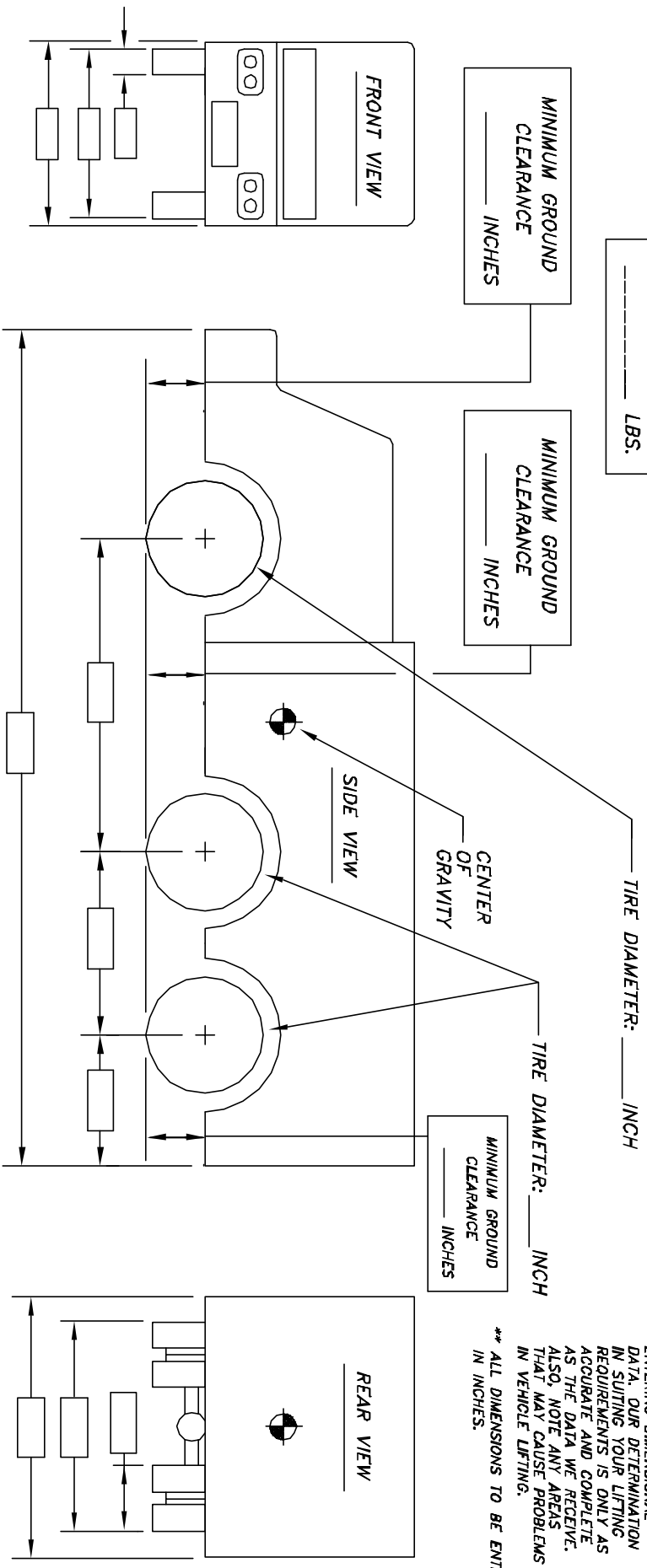


FOLD OR CUT HERE

TRUCK DATA FORM (DUAL AXLE REAR)

REV.	DESCRIPTION	DATE	BY	APP'D.
Δ				

VEHICLE WEIGHT:
(NOT GVW)
_____ LBS.



- NOTES:**
1. REMOVE ALL SHARP CORNERS & EDGES.
 2. UNLESS OTHERWISE SPECIFIED, SURFACE FINISH TO BR 125 HWS.
 3. WELDING MEDIUM SHALL CONFORM TO AWS SPECIFICATIONS TO E-70XX ELECTRODES OR E-701T CODE 6.3 FLUX CORE WIRE ONLY.

TOLERANCES:

ANGULAR	± 1°
FRACTIONAL	± .030
DECIMAL:	
0.XX	± .005
0.XXX	

FILE NAME: ZZ06

SCALE	DRAWN
CHECKED	APPROVED
DATE	WEIGHT
1/95	LB.

NEXT ASSEMBLY

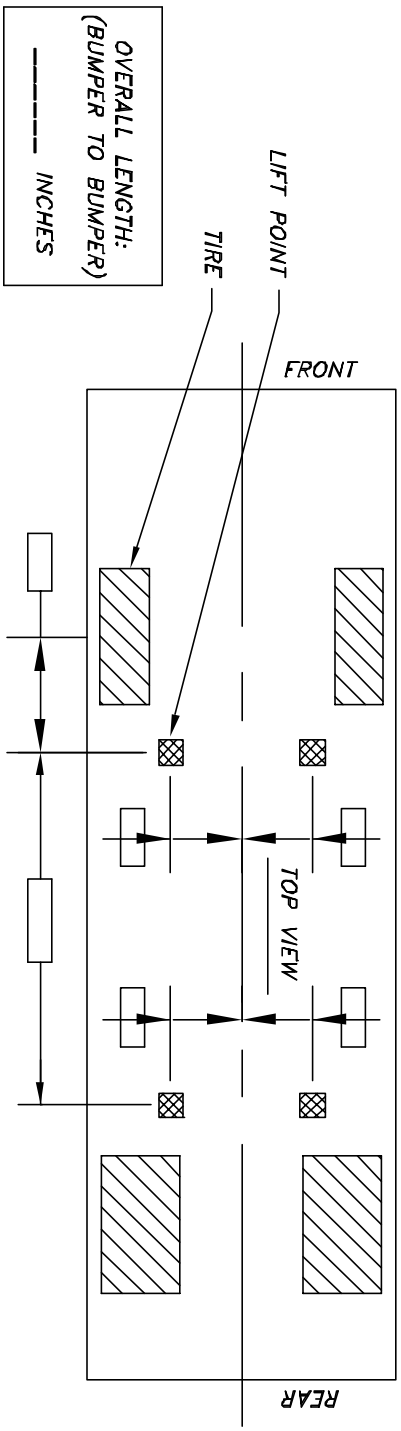
MOHAWK RESOURCES LTD.

TITLE: TRUCK DATA FORM (DUAL AXLE REAR)

FROM: DRAWING NUMBER: ZZ06



TRUCK DATA FORM (SINGLE AXLE REAR)

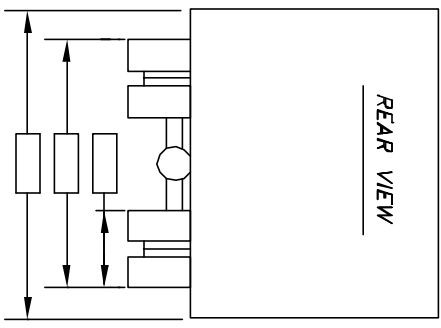
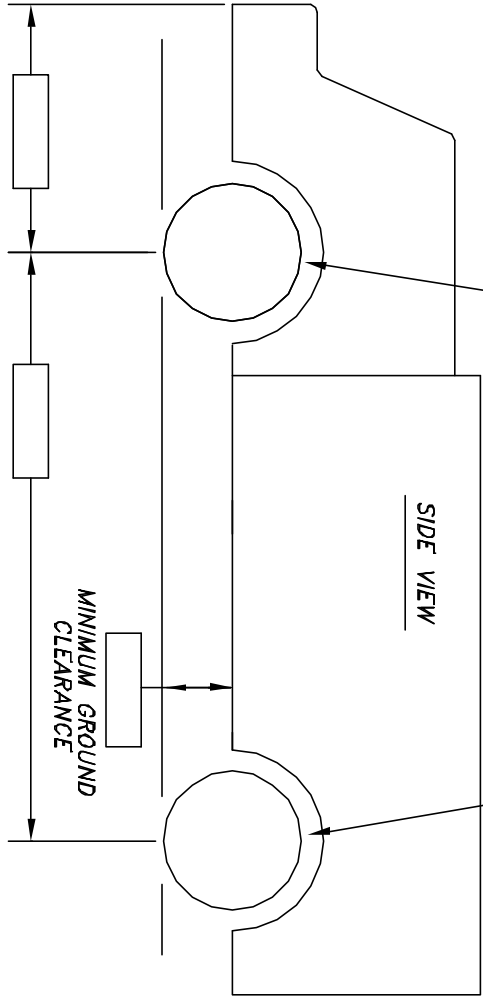
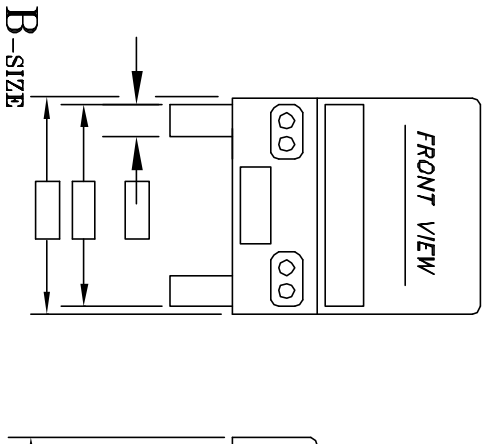


VEHICLE WEIGHT:
(NOT GVW)

LBS.

* PLEASE BE COMPLETE IN ENTERING DIMENSIONAL DATA. OUR DETERMINATION IN SUITING YOUR LIFTING REQUIREMENTS IS ONLY AS ACCURATE AND COMPLETE AS THE DATA WE RECEIVE. ALSO, NOTE ANY AREAS THAT MAY CAUSE PROBLEMS IN VEHICLE LIFTING.

** ALL DIMENSIONS TO BE ENTERED IN INCHES.



- NOTES:
1. REMOVE ALL SHARP CORNERS & EDGES.
 2. UNLESS OTHERWISE SPECIFIED, SURFACE FINISH TO BE 125 RMS.
 3. WELDING MEDIUM SHALL CONFORM TO AWS SPECIFICATIONS TO E-70XX ELECTRODES OR E-70TT CODE 5.3 FLUX CORE WIRE ONLY.

TOLERANCES:	ANGULAR FRACTIONAL: 0.XXX	± 1°	
	DECIMAL: 0.XXX	± .030	
		± .005	
FILE NAME	NEXT ASSEMBLY		
ZZ73			

SCALE	DRAWN R.V.
CHECKED	APPROVED
DATE 1/95	WEIGHT LB.

MOHAWK RESOURCES LTD.	
TITLE	TRUCK DATA FORM (SINGLE AXLE REAR)
FROM	DRAWING NUMBER ZZ73

