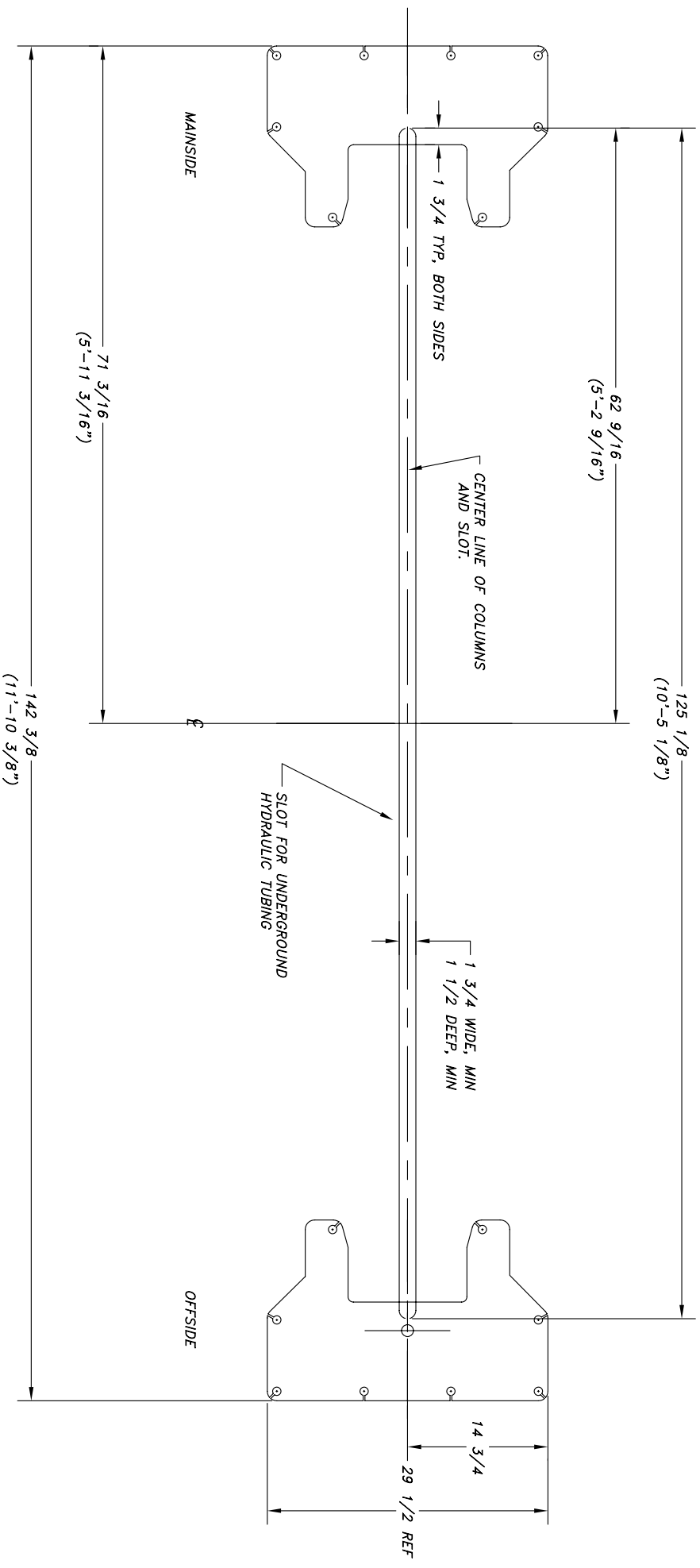


REV.	DESCRIPTION	DATE	BY	APP'D.
△				



- RECOMMENDED LAYOUT INSTRUCTIONS**
1. LAYOUT LOCATION OF BASE PLATES WITH CHALK LINE.
  2. LAYOUT SLOT WITH CHALK LINES.
  3. CUT OUT SLOT.
  4. LOCATE COLUMNS.
  5. PLACE HYDRAULIC LINES AND ADJUST BEFORE ANCHORING COLUMNS.
  6. ANCHOR COLUMNS.

C-SIZE

SYSTEM 1A

**NOTICE OF CONFIDENTIAL INFORMATION**

INFORMATION CONTAINED HEREIN IS CONFIDENTIAL AND PROPERTY OF MOHAWK RESOURCES LTD. ANY REPRODUCTION, DISSEMINATION, OR USE OF THIS INFORMATION FOR ANY OTHER PURPOSES WITHOUT THE WRITTEN PERMISSION OF MOHAWK RESOURCES LTD. IS STRICTLY PROHIBITED. THE INFORMATION SHALL NOT BE USED OR DISCLOSED BY THE RECIPIENT FOR ANY OTHER PURPOSES WHATSOEVER.

- NOTES:**
1. REMOVE ALL SHARP CORNERS & EDGES.
  2. UNLESS OTHERWISE SPECIFIED, SURFACE FINISH TO BE 125 RMS.
  3. WELDING MEDIUM SHALL CONFORM TO AWS SPECIFICATIONS TO E-70XX ELECTRODES OR E-70T1 CODE 5.3 FLUX CORE WIRE ONLY.

**TOLERANCES:**

ANGULAR	± 1°
LINEAR	± .030
DECIMAL	± .005
XXX	± .005
XXX	± .005

FILE NAME: C10079

009-010-003	NEXT ASSEMBLY
-------------	---------------

SCALE	1/8	DRAWN	gdk
CHECKED		APPROVED	
DATE	12/92	WEIGHT	LB.

<b>MOHAWK RESOURCES LTD.</b>		TITLE	FROM	DRAWING NUMBER
		SUGGESTED CLEARANCES FOR IN-GROUND HYD. LINES		009-010-019