

MOHAWK LIFTS

Americas' best lift investment. Established 1981.

Anatomy of a Mohawk

Clear Floor 2 Post Lift Models LMF-12/TP-16/TP-18

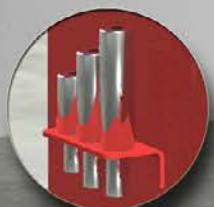
25
YEAR
WARRANTY

The Lifts You Can't Wear Out

- THE WIDEST OR NARROWEST LIFT
- THE LOWEST CEILING REQUIRED
- THE LONGEST WARRANTY
- THE TALLEST RISE
- THE TALLEST WITH TRUCK ADAPTERS
- THE HEAVIEST BUILT
- ALL U.S. MADE



Direct drive lifting rods (not cables)
and stainless steel hydraulic
lines (which will never wear)



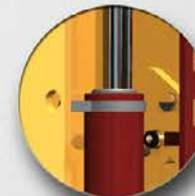
5", 7.5", 10" truck adapters included



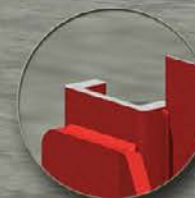
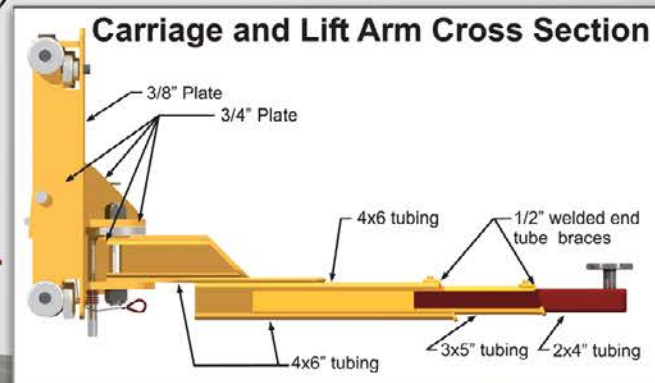
Shown with optional
in floor lines



Sealed roller
bearings (not plastic
slide blocks)



4" cylinders
with 2 1/2" chrome
rod (not tiny cylinders)



Heavy duty column construction
with 3/4" fork lift mast channel
construction not bent sheet metal

1-800-833-2006



www.mohawklifts.com

MOHAWK LIFTS

Americas' best lift investment. Established 1981.

Anatomy of a Mohawk

Clear Floor 2 Post Lift Models LMF-12/TP-16/TP-18

25
YEAR
WARRANTY



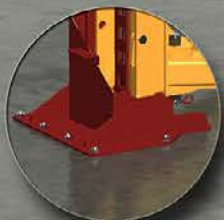
Optional safety weight gauge weighs vehicle, generates shop revenue & assures tech has lowered lift onto locks



Mechanical safety latch rack made of 3/4" steel plate



All position 1" thick mechanical locks



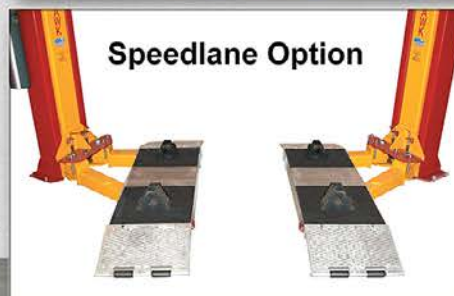
30" wide x 3/4" thick base for stability (not made of 12" wide, 3/8" plate)



Turf Kit Adaptor Option



Wheel Adaptor Option



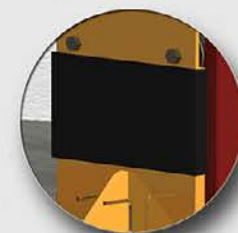
Speedlane Option

7.5" Truck adapters

5" Truck adapters

Shown with optional 3 stage arm (model LMF-12 and TP-16)

Height adjustable stainless steel hydraulic lines (not rubber hoses, which get brittle, break or damaged) can also be routed in the shop floor



Optional foam door guard



Optional 3 Stage swing arm (Models LMF-12 or TP-16) gives 10" more reach

1-800-833-2006



www.mohawklifts.com