

# LIFTPOINT.

## MATERIAL HANDLING SERVICE LIFTS

*"What once took us 2 hours on the floor now takes 8 minutes standing."*

**Material Handling Technician**  
Fortune 100 CPG Company



TO MEET THE ONE AND ONLY ANSI STANDARD FOR SERVICE LIFTS

**Model LTX-18**  
MHX18

### LIFTPOINT LTX-SERIES



### MOBILE COLUMNS



### DRIVE-ON LIFT



**UPTIME. SAFETY. DEPENDABILITY. RESULTS.**

### LIFT DESIGN

- LiftPoint columns are constructed of 3/4" thick forklift masts, for a lifetime of trouble-free service and reliability.
- Two 4" heavy duty cylinders (one in each post) make for a safe and stable lift.
- Adjustable three stage arms ensure compatibility with fleets of various model types, lengths and widths.
- Low profile (1.5") three stage swing arms fit under most material handling equipment (lower profile adapters available).

### SAFETY SYSTEMS

- Patented, infinite-position, internal hydraulic safeties backed by external pressure compensated flow controls and velocity fuse valving.
- LiftPoint lifts feature all position mechanical safety locks in both columns, starting at the ground, to full lifting height.
- Swing arm restraints automatically engage upon lifting and automatically disengage when the material handling equipment has been fully lowered.

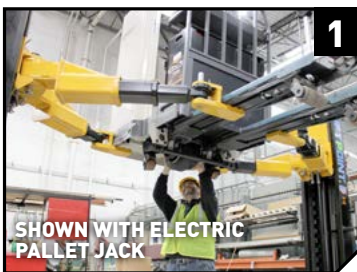
### OPERATION

- Patented hydraulic synchronization system ensures even lifting and eliminates the need for restrictive height overhead covers, cables, pulleys, equalizer chains or obstructive floor plates.
- To raise the carriages, the LTX Series uses a true piston and ram system, direct drive lifting rods and high quality U.S. made power units for smooth, stable, reliable lifting



LiftPoint DOES NOT use height restrictive overhead cable covers that limit lifting height.

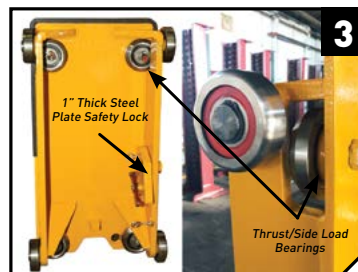
◀ **Shown:** LTX-22 lifting 20,950 lb. JBT Autonomous Guided Vehicle (AGV)



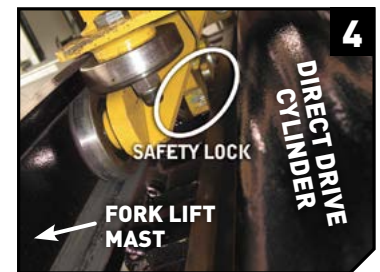
The LTX offers FULL unobstructed underside access for material handling equipment for all repairs, takes up minimal bay space and leaves wheels hanging free for tire, brake or any other necessary repairs.



Heavy duty column construction with direct drive cylinders, direct drive lifting rods and stainless steel hydraulic lines are built for decades of low-maintenance operation.



LiftPoint's welded steel carriages roll on eight double sealed, self-lubricating, steel ball bearing rollers, and incorporates a thrust load bearing design to dissipate the thrust from heavy counterbalanced forklifts.



LiftPoint designs are inspired by a forklift's mast and carriage - the same safety, longevity, dependability & stability you know and trust in your fleet of forklifts is behind the design of each lift. Compared to bent sheet metal columns with wearable plastic slide blocks, there is no comparison!



**DARE TO COMPARE**  
LIFTPOINT VS THE COMPETITION

[LiftPointUSA.com/D2C-ForkLift](http://LiftPointUSA.com/D2C-ForkLift)

Can the lift service pallet jacks, reach trucks, order pickers and tugs or sit down riders only?

These are just some of the questions we will answer for you and explain why LiftPoint lifts are made to last a lifetime.

# DRIVE-ON LIFTS

## MODEL FL-25 25,000 LB. FORK LIFT SERVICE LIFT

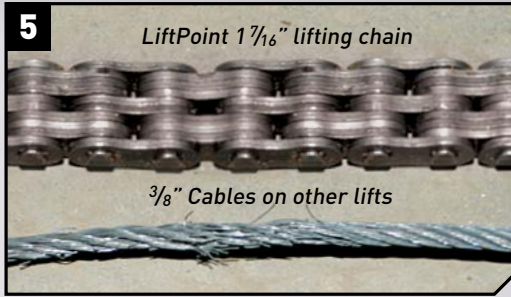


**Rolling Jacks:** 15,000 or 25,000 lb. capacity rolling electric/hydraulic low profile jacks



Multi-position safety latch racks

**MODEL FL-25**  
25,000LB Capacity



5

LiftPoint 1 7/16" lifting chain

3/8" Cables on other lifts

**Chains vs Cables:** Cables stretch, fray, and need frequent replacement. LiftPoint chains are guaranteed for 10 years.



6



7

Typical 4 Post lift showing cables under bent-sheet metal runway

**Steel I Beams vs Bent Sheet Metal:** LiftPoint uses 8" steel "I" beams for track construction as opposed to competitors using bent sheet metal. Steel "I" beams are far stronger, and experience minimal bowing compared to bent sheet metal when up against cushion or pneumatic forklift tires.

# MOBILE COLUMN LIFTS

## 28,000 LB. RATED: SOLID, SAFE, & PROVEN.



Fork truck adapters with 28,000 lb. rated capacity

### SAFETY MEANS STABILITY



8

VS



9

Notice LiftPoint's baseplate contact with the floor

Note LiftPoint's retractable front wheel

Notice limited contact with floor area under column

Steel wheels bear load of forklift

### CLEAR FLOOR

VS

### TRIPPING HAZZARDS



10

CLEAR LANE

**Clear, Unrestricted Working Space:** Clear unobstructed access for rolling equipment plus smaller footprint means more productive working space

**Limited Space:** stabilizing bars are a tripping hazard & prohibit access for dollies, jacks and tool boxes



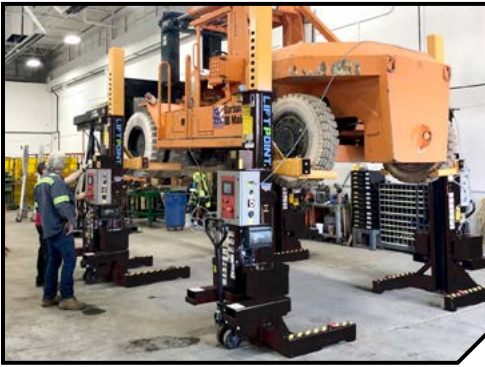
11

Stabilizing Bars



As little as 6 ft² of clear space available

# ULTRA HEAVY DUTY FORK TRUCK LIFTS



**SHOWN: 67,000 LB. FORK LIFT**  
A set of four columns can accommodate HD fork lifts up to 120,000 lbs.

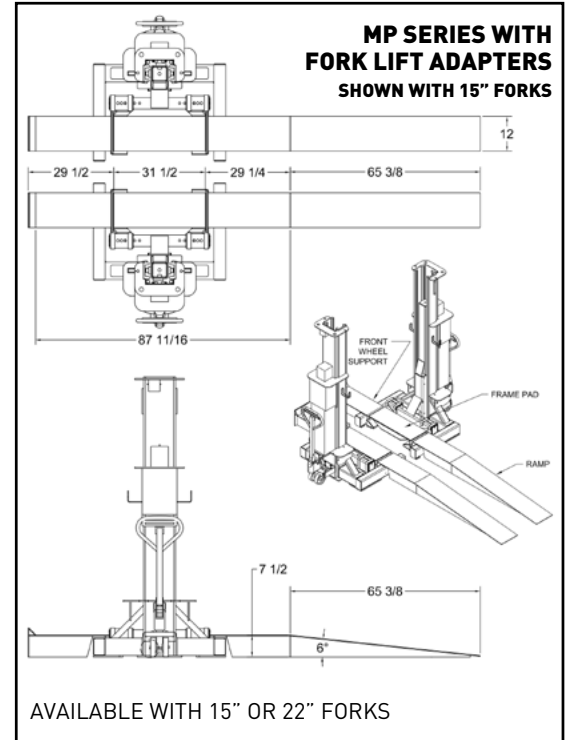
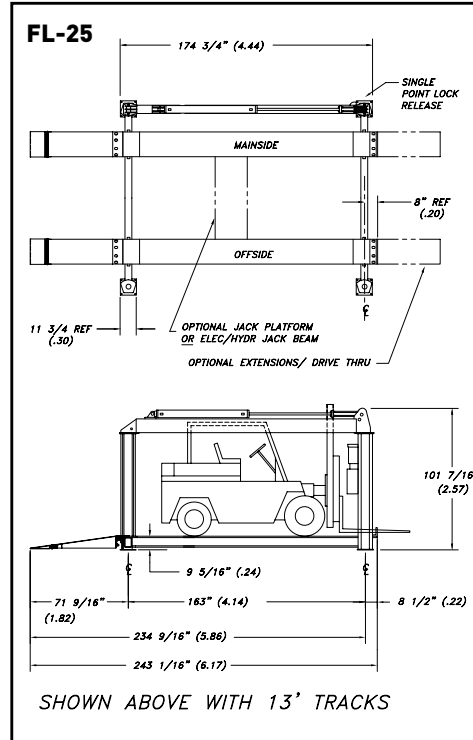
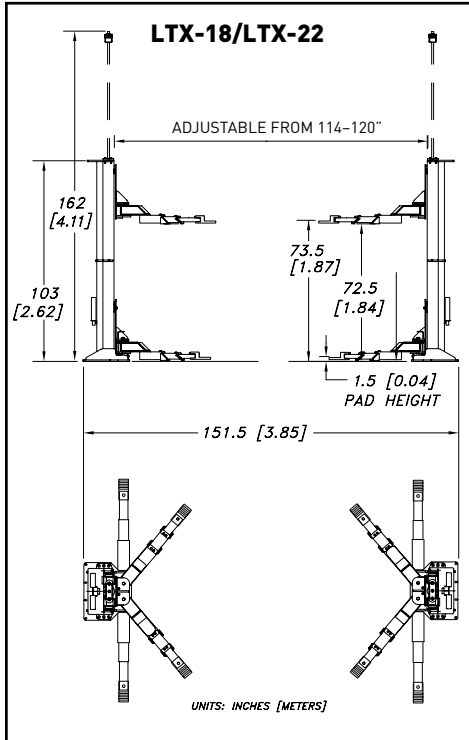


**SHOWN: 50,000 LB. FORK LIFT**  
A vertical rise lift can accommodate HD fork lifts up to 99,000 lbs.



**SHOWN: 50,000 LB. FORK LIFT**  
A four post lift can accommodate HD fork lifts up to 120,000 lbs.

## LIFT SPECIFICATIONS



**SPECIFICATIONS SUBJECT TO CHANGE WITHOUT NOTICE**

**LIFTPOINT.**  
A Division of Mohawk Lifts, LLC.

P.O. Box 110  
65 Vrooman Ave  
Amsterdam, NY 12010  
(800) 833-2006  
(518) 842-1431  
FAX: (518) 842-1289  
[www.LiftPointUSA.com](http://www.LiftPointUSA.com)

**DISTRIBUTED BY:**