

MOHAWK VERTICAL RISE LIFT

35,000–99,000 LB. CAPACITIES

- *Surface or Flush Mounted*
- *Galvanized Option for Wash Bay Environments*
- *Wheels Free Rolling Jacks from 26-44K*
- *Runway Lengths from 23'- 48'*
- *Alignment Compatible*
- *Inside Track Light Kits*



***THE LIFT YOU CAN'T
WEAR OUT***

MOHAWK LIFTS

www.MohawkLifts.com • 800-833-2006

Americas Best Lift Investment...

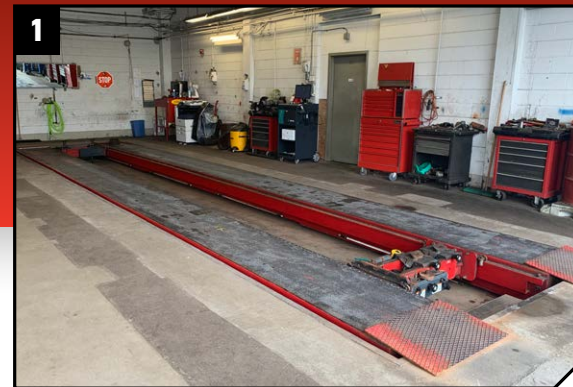
Mohawk is a proud member of the Automotive Lift Institute
...Because Your Safety is Riding on it!



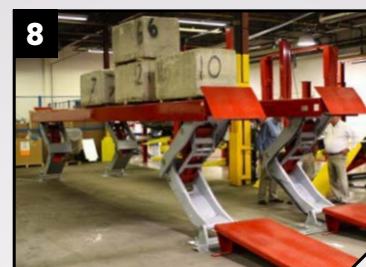
MOHAWK VERTICAL RISE LIFT

**SAVING SPACE, SOLID, POWERFUL AND
MAINTENANCE FREE. MOHAWK--THE PROVEN
SIMPLICITY OF VERTICAL RISE LIFTS.**

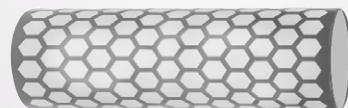
BUILT TO LAST!



▲ Available in surface, recessed floor or full flush mounted for ultimate shop space savings. The flush mounted direct rise is installed recessed in a pit, making the lift "invisible" when not in use to maintain maximum shop work flow.



▲ Mohawk uses a patented volumetric fluid powered system to ensure the lift starts level and stay level...both front to rear & side to side. Shown with a 25% offset load.



▲ Mohawk leverages a self-lubricating honey-comb design pivot pin to fully grease and maintain lubrication of entire pin.

FEATURES

- A variety of track lengths from 23' to 48'.
- 35,000 through 99,000 lb. capacities.
- Surface mounted, recessed pit or flush mounted.
- Rolling jacks for wheels free service available in 26,400 lb., 35,200 lb. and 44,000 lb. capacities.
- Full undervehicle access for all trucks, buses & heavy equipment.
- 79.5" - 82.7" lifting height on all surface mounted models.
- Full and clear, unobstructed under-vehicle access without structural cross brace, or torsion bar.
- Multi-position mechanical safety locks in all lifting legs.
- Available in a fully galvanized version for use in corrosive wash bay environments.
- Mechanical/hydraulic control assures runways stay level and even regardless of the vehicles weight distribution.

DESIGN BENEFITS

- The heaviest built vertical rise lift in the world for your heavy duty lifting requirements.
- Designed to eliminate wear, binding and service issues of other vertical rise lifts.
- Runways leverage segmented box girder design (like bridge spans) to prevent sagging & twisting from concentrated and uneven loading.
- Runways weigh up to 40% more than competitive models for a longer-lasting system.
- High-strength, polished hinge pins leverage self-lubricating bearings with "zirk: style" grease fittings located at every hinge point for easy lubrication and maintenance.
- Sturdy base design minimizes stress on the shop floor, allowing installation virtually anywhere.
- No structural cross bracing between the platforms; eliminates trip hazard and obstructions between the platforms.



▲ Patented Hydro-Mechanical synchronization with electrical backup safety. Mechanical Torsion Bar prohibits master/slave cylinders (8 total) from moving at differential speeds. ZERO Equalization/Fault Codes to maximize uptime, and minimize service/parts/repair.



▲ Mohawk box girder structure design runway offers 30% more resistance to deformation such as flexing, sagging and torquing. Mohawk's heavier built lift means more structural steel, and greater longevity.

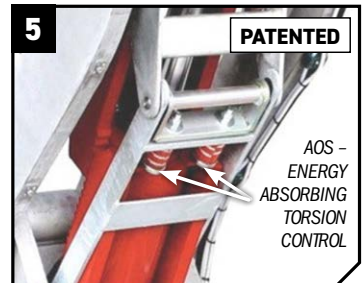


▲ Mohawk VRL uses a vertical cylinder design with a short stroke - meaning less wear of the piston/ram system.



◀ Alignment compatible to verify alignment at any working height.

Optional ▶
shatterproof
24v LED runway
lighting



▲ Patented "AOS" Energy absorbing system leverages industrial shocks to minimizes stress on legs, runways, pivot pins, bushings, and overall system



▲ Optional NEMA 4 water resistant stainless steel control console for corrosive environments



▲ Available in fully galvanized construction for corrosive wash bay environments.

CONTROL SYSTEM

- Mohawk's Vertical Rise lift leverages Siemens Controls & Power Components, all of which are tested before they leave the factory.
- Closed Loop Hydraulic/Mechanical system with electrical backup safety ensures that runways maintain a level rise regardless of how the lift is loaded.
- Mohawk's patented Hydro-Mechanical synchronization system does not utilize any electronic sensors on the lift. Competitive lifts use electronic voltage sensors which corrode and malfunction under both normal & extreme shop conditions, leading to uneven lifting and expensive "fault-code" repairs.
- Volumetric hydraulic/mechanical control system leverage four lifting cylinders inside the console, linked by a large torsion bar. Fluid displacement design ensures each piston responds immediately to increased pressure from pump or unevenly weighted vehicles.
- Patented AOS Energy absorbing system eliminates the need for sliding legs at the base or under runways, fixed hinges provide a smooth even lift. "Y" style lift hinges are not fixed & slide under the runways, creating wear and requiring more frequent maintenance.

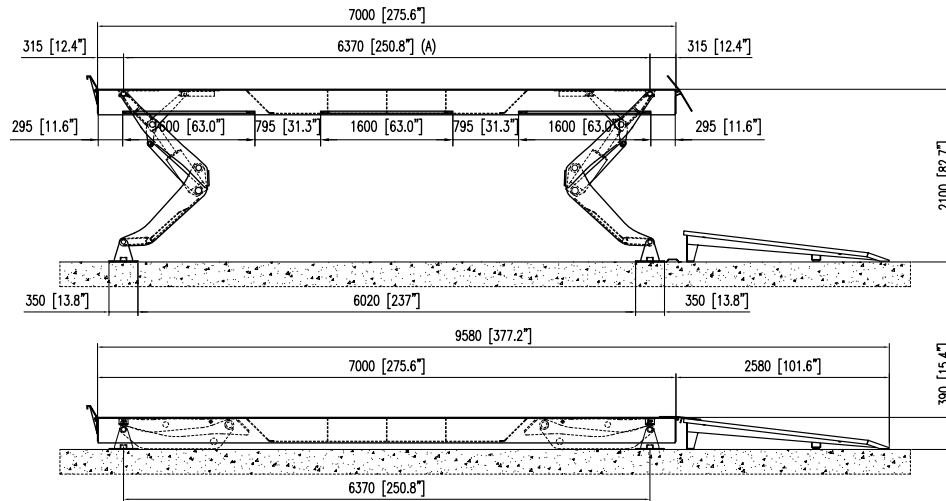
Wheels Free Rolling Jack

- 26,400, 35,200 & 44,000 lb. air hydraulic heavy duty jacking beams
- Wheels free jack can fully raise vehicle off the runways

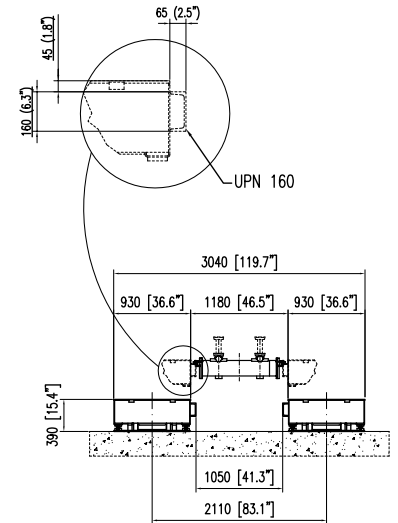


VERTICAL RISE LIFT SPECIFICATIONS

MOHAWK MODEL: V-085-C-23S / 85,000 LB. LIFT WITH 23' LONG RUNWAY



*SPECIFICATIONS SUBJECT TO CHANGE WITHOUT NOTICE.



	TYPE A	TYPE B	TYPE C
Capacities (lbs.)	35,000-64,000	77,000	85,000-99,000
Track Lengths	23'- 48' (other lengths also available)		
Approach Ramp length	101.6" - standard		
Lifting Height	79.5"	80.4"	82.7"
Lowered Height	14.2"	14.2"	15.4"
Track Width	30"		36.6"
Overall Width Std.	106.4"		119.7"
Concrete Floor Requirements	Minimum - 6" / 4000 PSI		
Air Pneumatic	60 - 120 PSI		
Width Between Track Std.	46.5" (adjustable)		
Lifting Speed	70 Seconds (faster with lighter load)		
Safety Locks	Start at 18" off the ground and then a lock position every 3.5" after that		

POWER UNIT OPTIONS

Voltage	Amps
200-208	33
230-240	29
400	17
460-480	15
550-575	13

All of these motors generate up to 7.5 KiloWatts of power, 10 HP, and operate off of 60 Hz 3-Phase.

OPTIONAL EQUIPMENT

- Rolling Jack/Jacking Platforms
- Alignment Turntables/Cutouts
- Track Lighting
- Air/Hydraulic Tire Dolly
- Stainless Steel Bases
- Galvanized and Wash Bay Finish
- Drive Thru Ramps

SM = Surface Mount Model
FM = Flush Mount Model

Mohawk builds the best products with the finest materials, to the highest standards. Just compare our lifts. Our staff will assist you with a fleet evaluation, design assistance and answer any technical questions you have. We invite your calls.

Mohawk lifts are manufactured in compliance with the following standards: ALI, ANSI, ASME, AISI, ASTM, ASA, NEC, AWG, NEMA.

MEETS CURRENT NATIONAL ANSI CODE FOR LIFTS.

MOHAWK LIFTS

Mohawk Lifts, LLC.
P.O. Box 110
65 Vrooman Ave
Amsterdam, NY 12010
(800) 833-2006
(518) 842-1431
FAX: (518) 842-1289
www.mohawklifts.com

AVAILABLE UNDER DISCOUNTED GOVERNMENT
CONTRACT IN ALL 50 STATES



DISTRIBUTED BY: