

# MOHAWK LIFT PRODUCTS

## The Lifts You Can't Wear Out



**TWO POST**

Model System IA-10



Model TP-20

**FOUR POST**



Model TR-75

**MOBILE COLUMN**



Model MP-18-007

**PARALLELOGRAM**



Model 75-32-F

**VERTICAL RISE**



Model V-77-30S

# MOHAWK LIFTS

*Americas Best Lift Investment...*

Still proudly designed, welded  
and manufactured in the U.S.A.



# MOHAWK LIFTS

THE LIFTS YOU CAN'T WEAR OUT

IF THERE IS A VEHICLE IN THE AIR . . .  
MAKE SURE THERE IS A MOHAWK LIFT UNDERNEATH IT.

**M**ohawk, the undisputed leader in lift quality and longevity, offers environmentally safe above-ground lifts ranging from 10,000 to 240,000 lb. capacities.

Since 1980 Mohawk has manufactured the highest quality, safest auto and truck lifts available. Mohawk is the #1 lift supplier for all government, state, utility, and fleet lifting requirements. Mohawk's popularity is based on safety systems, longevity, design, construction, and the most inclusive warranty in the lift industry.



**MOHAWK TWO POST LIFTS OFFER A 25 YEAR STRUCTURAL 10 YEAR MECHANICAL WARRANTY**

## MOHAWK TWO POST LIFTS

Mohawk two post lifts are available in 9 different models and range in capacity from 10,000 to 30,000 lbs. Mohawk lifts feature the industry's heaviest construction for a **lifetime of trouble-free service**. Mohawk two post lifts offer a **25 year structural and 10 year mechanical warranty**. Equipped with a variety of truck adaptors as standard equipment, Mohawk two post lifts are the lifts that will raise any vehicle that comes in the shop.

Mohawk two post lifts are hydraulically synchronized using overhead (or in-floor) hydraulic lines that can be set at any working height. Height adjustable overhead lines eliminate overhead cable covers & allow tall trucks to be fully raised. Mohawk two post lifts feature multiple position mechanical safety locks in both columns for safe, secure and stable lifting.

**Mohawk, the least expensive lifts you'll ever own**

## MOHAWK FOUR POST LIFTS

Mohawk four post lifts are available in a variety of capacities starting at 19,000 lbs. for school buses and medium-duty trucks, heavier models for coaches or fire trucks, and the heaviest model of 120,000 lbs. for any type of off road equipment.

Mohawk four post lifts feature the heaviest designs made using fork lift channel and roller bearing construction. Heavy cross rails and I beam track construction assure a lifetime of service. Multiple safety systems consist of mechanical, electronic & hydraulic safeties operate at all lifting heights and assure the operator safety.

## MOHAWK MOBILE COLUMN LIFTS

2, 4, 6 and 8 column configurations in column capacities from 14,000 lbs., 18,000 lbs., 24,000 lbs. or 30,000 lbs. per column means total lifting up to 240,000 lb. Available in AC or DC battery operation.

## MOHAWK DRIVE-ON LIFTS

Available from 35,000 to 100,000 lb. capacities and track lengths from 23 to 48 feet in surface, recessed and flush mounted styles with optional rolling jacks or full lift galvanization for corrosive work areas.

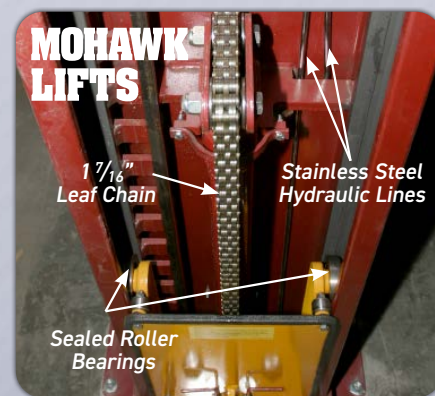
## MOHAWK SPECIALTY LIFTS

Mohawk offers specialty lifts and accessories for a wide range of service equipment ranging from fork lifts to DOT snow plow trucks. No matter what you're lifting Mohawk has a better and safer way to lift it.

**SUPERIOR, LONGER LASTING, STRONGER COMPONENTS**



Mohawk's Patented hydraulic equalization eliminate floor plates and overhead obstruction, giving you a clear floor work space for complete access under any vehicle.

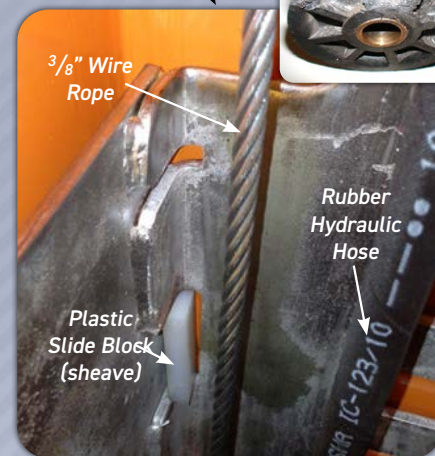


- Sealed roller bearings
- Stainless steel hydraulic lines
- Leaf chains

### vs. competitors

- Plastic sliders
- Plastic cable rollers
- Rubber hydraulic hoses
- Wire rope

Wire Rope Plastic Cable Roller



For more details visit:  
[MohawkLifts.com/Dare2Compare](http://MohawkLifts.com/Dare2Compare)

## LIGHT DUTY TWO POST



Model LC-12

### SYSTEM IA-10 & LC-12

- 10,000 & 12,000 LB. CAPACITIES
- LOW 3 1/2" SWING ARMS
- 3 STAGE SWING ARMS STANDARD
- CHAIN/ROLLER LIFTING
- ADJUSTABLE HEIGHT OVERHEAD STAINLESS STEEL HYDRAULIC LINES
- **25 YEAR STRUCTURAL WARRANTY**
- 10 YEAR MECHANICAL WARRANTY

## MEDIUM DUTY TWO POST



Model TP-18

### TP-16, TP-18 & ML-220

- 16,000, 18,000 & 20,000 LB. CAPACITIES
- INFINITE POSITION MECHANICAL SAFETY LOCKS
- DIRECT DRIVE OPERATION
- NO OVERHEAD CABLES
- **25 YEAR STRUCTURAL WARRANTY**
- 10 YEAR MECHANICAL WARRANTY

## HEAVY DUTY TWO POST



Model TP-30

### TP-20, TP-26 & TP-30

- 20,000, 26,000 & 30,000 LB. CAPACITIES
- CLEAR FLOOR & CLEAR OVERHEAD
- ALL POSITION SAFETY LOCKS
- A PERFECT ALL PURPOSE FLEET LIFT DESIGNED FOR CARS & TRUCKS
- **25 YEAR STRUCTURAL WARRANTY**
- 10 YEAR MECHANICAL WARRANTY

## MEDIUM DUTY FOUR POST



Model TR-25

### TR-19 & TR-25

- 19,000 OR 25,000 LB. CAPACITIES
- 16', 20', 25' OR 30' TRACK LENGTHS
- ALL POSITION MECHANICAL, HYDRAULIC & ELECTRONIC SAFETY SYSTEMS
- WHEELS FREE JACKS AVAILABLE FOR TIRE & BRAKE SERVICE

## HEAVY DUTY FOUR POST



Model TR-75

### TR-33, TR-35, TR-50, TR-75, TR-80, TR-110 & TR-120

- 33,000 TO 120,000 LB. CAPACITIES
- 20', 25' OR 30' OR LONGER TRACK LENGTHS UP TO 60'
- ALL POSITION MECHANICAL, HYDRAULIC & ELECTRONIC SAFETY SYSTEMS
- WHEELS FREE JACKS AVAILABLE FOR TIRE & BRAKE SERVICE

## MOBILE COLUMN



Model MP-18

### MP-18, MP-24, MP-30 & 800 SERIES

- 14,000, 18,000, 24,000 & 30,000 LB. CAPACITIES PER COLUMN
- TOTAL CAPACITIES UP TO 240,000 LBS.
- AVAILABLE IN 2,4,6 OR 8 COLUMN CONFIGURATIONS
- ADJUSTABLE LIFTING FORKS
- SMOOTH ELECTRIC/HYDRAULIC OPERATION
- AVAILABLE IN AC OR DC (BATTERY) OPERATION

## HEAVY DUTY DRIVE-ON



Model VR-77

### PARALLELOGRAM & VERTICAL RISE LIFTS

- 35,000-100,000 LB. CAPACITIES
- AVAILABLE IN FLUSH OR SURFACE MOUNTED MODELS
- 23' TO 48' RUNWAY LENGTHS
- ALL POSITION MECHANICAL, HYDRAULIC & ELECTRONIC SAFETY SYSTEMS
- GALVANIZED MODELS AVAILABLE

## TURF MAINTENANCE



Accessory #009-012-001 Shown on 10,000 lb. Capacity System IA-10

### TURF MAINTENANCE EQUIPMENT & AUTO SERVICE LIFT

- USE ON MOHAWK 10,000 THROUGH 20,000 LB. TWO POST LIFTS
- CONVERTS FROM FRAME ENGAGING LIFT TO TURF MAINTENANCE LIFT FOR ZERO TURN MOWERS, TURF EQUIPMENT AND FOUR WHEELERS
- 6,000 LB. CAPACITY
- CLEAR FLOOR WORK AREA
- EASILY REMOVED TO AGAIN BECOME A SERVICE LIFT

## SPECIALTY ITEMS & ACCESSORIES



### MOBILE JACK STANDS

- 14,000, 20,000, 30,000 OR 40,000 LB. CAPACITIES
- EQUIPPED WITH A HANDLE AND LARGE CASTORS FOR EASY MOVEMENT
- ADJUSTABLE HEIGHT STANDS ARE AVAILABLE IN 30-47" AND 47-77" VARIETIES



### OTHER ACCESSORY ITEMS

- SAFETY WEIGHT GAUGE
- MOBILE COLUMN FORK LIFT ADAPTORS
- TWO POST DRIVE-ON ADAPTORS
- MOBILE COLUMN FRONT TO REAR BUMPER ADAPTOR
- PLUS MANY OTHER ACCESSORIES

## PRODUCT SUPPORT



For questions concerning Mohawk products such as brochures, CAD drawings, specifications, lift options, or other services including maintenance or repair, contact Mohawk Lifts at 800-833-2006 or 518-842-1431.

Mohawk Lifts are made, assembled and welded in the U.S.A. Learn how our two post vehicle lifts compare to the competition. [mohawklifts.com/dare2compare](http://mohawklifts.com/dare2compare)

## SAMPLE TWO POST SPECIFICATIONS

	SYSTEM 1A-10	TP-16/18	TP-20	TP-26/30
Capacities (lbs.)	10,000	16,000/18,000	20,000	26,000/30,000
Lifting Speed (seconds)	50	60	90	135
A) Motor Rating	2 HP 208-230V (3Phase Optional)	4 HP 208-230V (3Phase Optional)	4 HP 208-230VAC (3 phase Optional)	5HP 208/230V 3 Phase
B) Synchronization	Hydraulic Fluid Displacement Using no Cables, Chains nor Overhead Obstruction			
C) Lifting Height (stroke)	6'	6'	6'	6'
D) Max. Arm Height	6'3 1/2"	6'5"	6'5"	6'7"
E) Max. Arm Height w/ Adapters	6	7'3"	7'3"	7'5"
F) Min. Arm Pad Height	3 1/2"	5"	5"	7"
G) Overall Width	11'10 3/8"	12'7 1/2"	14'	15'
H) Width Between Posts	10'	10'	11'	12'
I) Width Between Carriages	8'9"	8'9"	9'	9'9"
J) Column Height	8'7"	8'7"	11'	11'
K) Overhead Line Height	Adjustable Height or Routed Underground (optional) Models System 1A-10 thru TP-30			
L) Max. Cylinder Extension	N/A—Cylinders Do Not Protrude Past Column Height	13'6"	13'6"	13'5"
M) Weight (lbs.)	2500 lbs.	3100/3600 lbs.	7000 lbs.	8800-9300 lbs.

## SAMPLE FOUR POST SPECIFICATIONS

	TR-19 & TR-25**	TR-33** & TR-35**	TR-50**	TR-75**	TR-120**
Capacities (lbs.)	19,000/25,000	33,000/35,000	50,000	75,000	120,000
Lifting Speed (sec.)	120	120	120	120	120
Motor Rating	2 HP 208/230V Single Phase*	10 HP 208/230V 3 Phase	10 HP 208/230V 3 Phase	10 HP 208/230V 3 Phase	15 HP 208/230V 3 Phase
A) Lifting Height (Stroke)	5'	5'	5'	5'	5'
B) Platform Height @ Full (Stroke)	5'9"	6'2 1/2"	6'3 1/2"	6'3 1/2"	6'3 1/2"
C) Track Width** (Standard)	24"	24" or 32"	24" or 32"	24" or 32"	36"
D) Track Length** (Standard)	TR-19—16',20' TR-25—20',25',30'	20'-25'-30' (25' Standard)	20'-25'-30' (25' Standard)	20'-25'-30' (30' Standard)	30'-40' (30' standard)
E) Width** (Standard)	12'6"	14'5"	14'5"	14'5"	15'4"
F) Inside Post Width**	11'	12' Inside Posts	12' Inside Posts	12' Inside Posts	13'6"
G) Overall Length** (Standard)	27'3"	36'4"	36'4"	41'4"	47'7"
H) Weight (lbs.)	5250 lbs.	14,000 lbs.	17,000 lbs.	21,000 lbs.	30,000 lbs.

### ABBREVIATED SAMPLE SPECS

\* Three Phase Optional

\*\*These measurements change specific to the Fleet Requirements

\*\*\*Specifications subject to change without notice

Still proudly designed, welded and manufactured in the U.S.A.



For more detailed product information read this book at [www.mohawklifts.com](http://www.mohawklifts.com).

# MOHAWK LIFTS

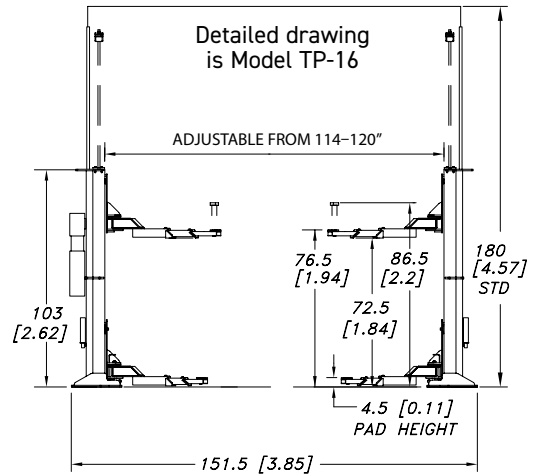
Mohawk Lifts, LLC.  
P.O. Box 110  
65 Vrooman Ave  
Amsterdam, NY 12010  
(800) 833-2006  
(518) 842-1431  
FAX: (518) 842-1289  
[www.mohawklifts.com](http://www.mohawklifts.com)

AVAILABLE UNDER DISCOUNTED GOVERNMENT CONTRACT IN ALL 50 STATES

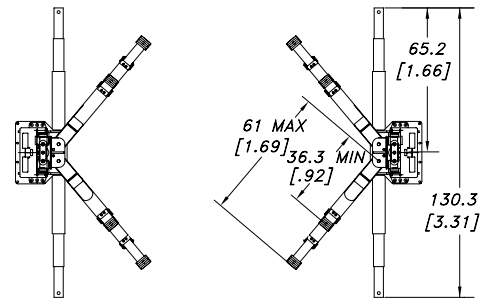


DISTRIBUTED BY:

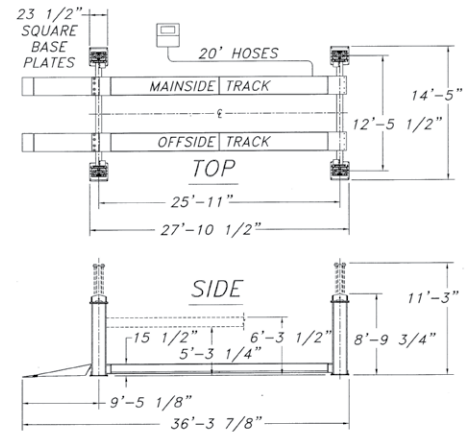
(STANDARD 3 STAGE ARMS)



SHOWN WITH ADJUSTABLE HEIGHT OVER-HEAD STEEL HYDRAULIC LINES.



Detailed drawing is Model TR-50



\* SHOWN WITH 25' RUNWAYS.

\*\* POWER UNIT LOCATION PER CUSTOMER'S SPECIFICATION. SHOWN ABOVE IN STANDARD LOCATION.

\*\*\* SPECIFICATIONS SUBJECT TO CHANGE WITHOUT NOTICE.

AUTOcad specs available online at [www.mohawklifts.com/specs](http://www.mohawklifts.com/specs)