

# MODELS TP-16 & ML-220

16,000 & 20,000 LB. CLEAR FLOOR 2 POST LIFT

*THE LIFT YOU CAN'T  
WEAR OUT*

**25**  
YEAR  
WARRANTY

**Includes 3 stage swing  
arms standard, for all of  
your lifting needs!**



TO MEET THE ONE AND ONLY  
NATIONAL SAFETY STANDARD  
FOR VEHICLE LIFTS

**MODEL TP-16**

# MOHAWK LIFTS

*Americas Best Lift Investment...*

Still proudly designed, welded  
and manufactured in the U.S.A.



# MODELS TP-16 & ML-220

## SOLID, SAFE & PROVEN HEAVY DUTY LIFTS FOR... HEAVY DUTY SERVICE

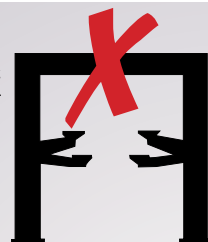
### MOHAWK DESIGN

- Mohawk columns are constructed of  $\frac{3}{4}$ " thick forklift masts, for a **lifetime** of trouble-free service.
- Each Mohawk carriage rolls on 8 double-sealed, self-lubricating, steel **ball bearing rollers** (NOT plastic sliders).
- Two 4" heavy duty cylinders make for safer, steadier lifting than single cylinder lifts or models with tiny cylinders.
- Easily **adjustable** overhead stainless steel hydraulic lines can be set at **any** height (or routed in floor) to accommodate all tall trucks and vans.
- 4.5" (lowered height) extra long, three stage swing arms fit under most all passenger cars & trucks.
- Equipped with Mohawk's 5", 7 $\frac{1}{2}$ " and 10" stackable lift adaptor pads.
- Standard with three stage swing arms that can reach the furthest lifting points.



LIFT SHOWN  
WITH IN-FLOOR  
HYDRAULIC  
LINES

Mohawk lifts **DO NOT** use height restrictive overhead cable covers that limit lifting height.



▲ Two post lifts offer **FULL unobstructed under vehicle access** for all repairs, take up minimal bay space and leaves wheels hanging free for tire, brake or any other necessary repairs.

### MOHAWK PATENTED INDUSTRY LEADING SAFETY SYSTEMS

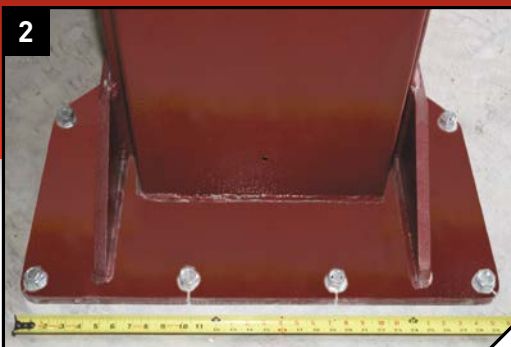
- Mohawk lifts feature **all position** mechanical safety locks in both columns, starting at the ground, to full lifting height.
- Patented, infinite position, internal hydraulic safeties backed by external pressure compensated flow controls and velocity fuse valving.
- Swing arm restraints automatically engage upon lifting and automatically disengage when the vehicle has been fully lowered.
- Lease/purchase plans available for 1-5 years.  
**Call Mohawk now!**

- The best, and most inclusive warranty in the lift business; 25 years structural, 3-10 year mechanical, plus limited lifetime cylinder seal warranty. **Mohawk builds the best lifts, with the best warranty.**

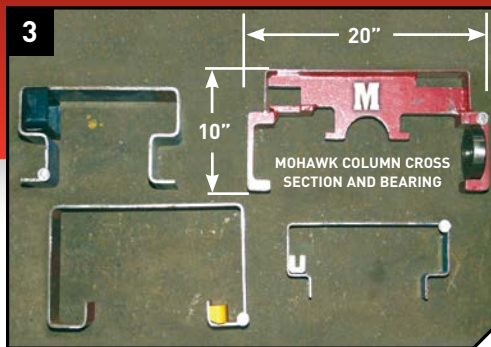
### OPERATION

- Hydraulic fluid is pumped between the two cylinders through the overhead (or optional in-floor) stainless steel hydraulic lines. Patented hydraulic synchronization eliminates the need for restrictive height overhead covers, cables, pulleys, equalizer chains or obstructive floor plates.

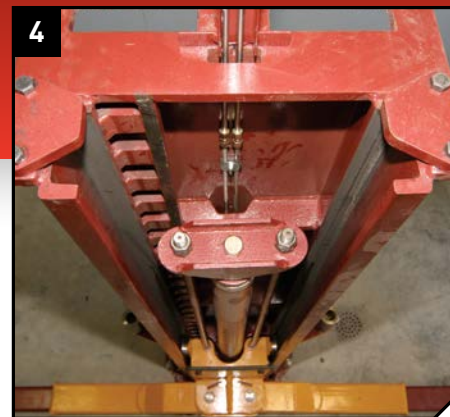




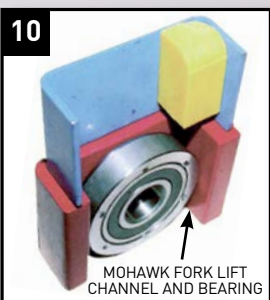
▲ Mohawk's **large and stable footprint** measures 30" wide by 24" is made of  $\frac{3}{8}$ " thick plate. Mohawk's large base gives stability to the lift, while distributing the load to the shop floor.



▲ Mohawk's fork lift channel & bearing (top right) VS. 3 different sheet metal columns which use plastic slides. Like your fork lifts mast, **Mohawk Lifts DO NOT WEAR OUT!**



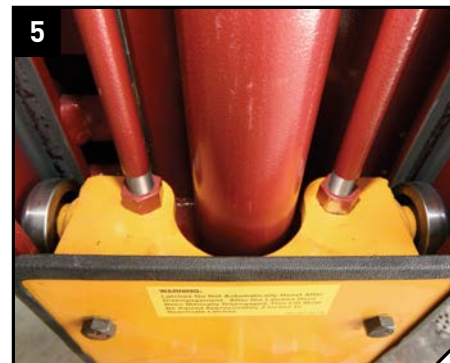
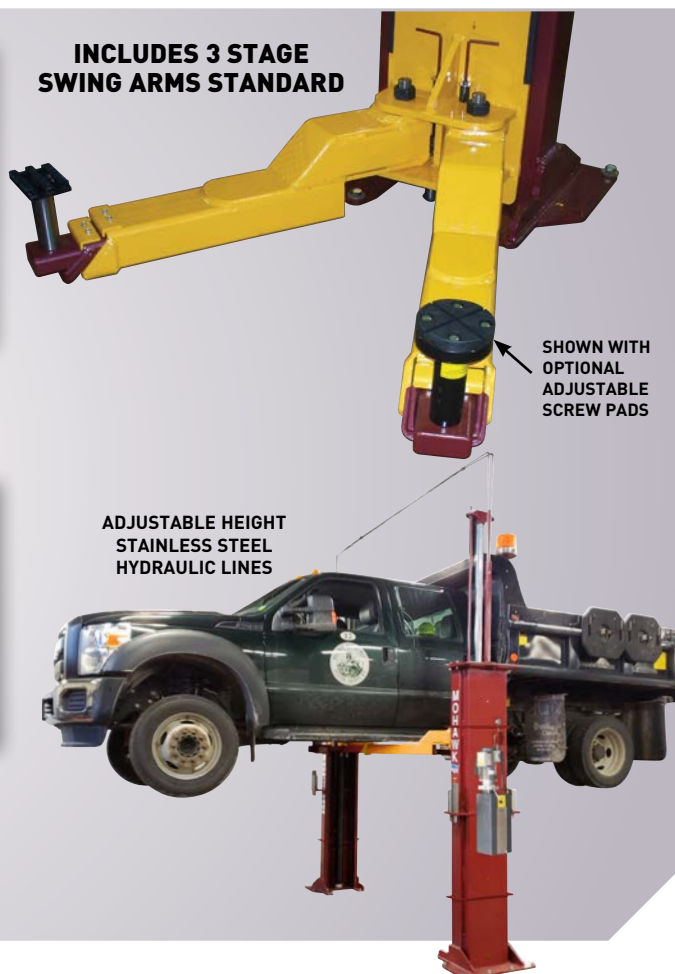
▲ Heavy duty column construction with direct drive cylinders, direct drive lifting rods (not cables) and stainless steel hydraulic lines (not rubber hoses) which will never wear.



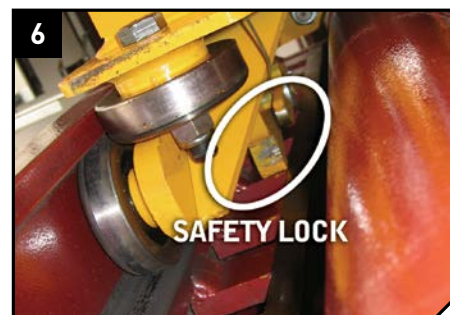
▲ **FORK LIFT CHANNEL** & bearing (bottom) vs. competitive columns & plastic slider (top)



▲ **LARGE 4" CYLINDERS** equal longer seal life and lower operating pressures vs. smaller competitive cylinders.



▲ Each carriage rolls on (8) 4" double sealed, self lubricating, heavy duty ball bearing rollers for a lifetime of trouble-free service (not plastic slide blocks).



▲ ALL position 1" thick mechanical locks on BOTH carriages engage the full length of travel. Available with optional single point air lock release (requires air to lift).

- To raise the carriages, Mohawk's TP-16 and ML-220 use direct drive lifting rods which eliminate the wear & maintenance associated with lifts that use cables, chains, & overhead cable covers.
- Mohawk carriages roll on eight double sealed, self-lubricating, steel ball bearing rollers, for a lifetime of maintenance-free operation.
- Mohawk bearings last longer, with less friction and wear than competitive lifts using plastic slide blocks which need constant greasing and maintenance.

**What other lift offers a 25 year structural warranty?**

## 2 POST ACCESSORIES



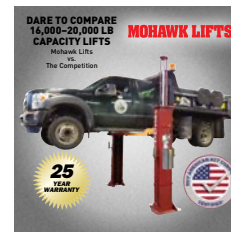
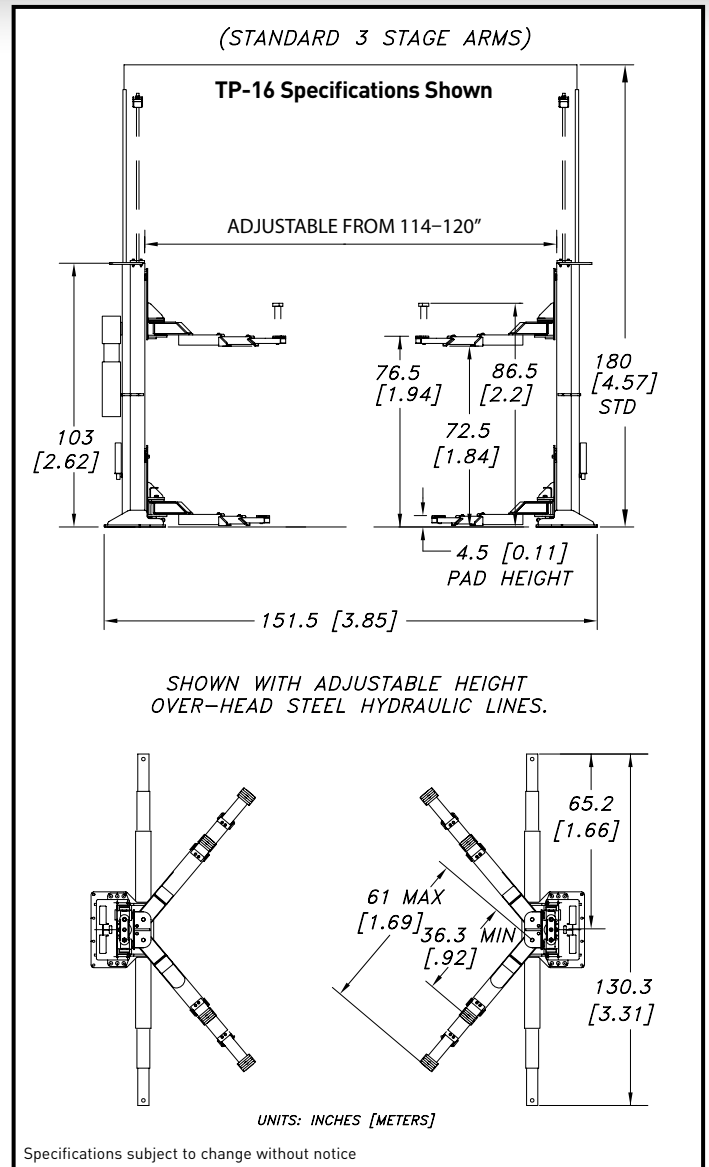
**Safety Weight Gauge**  
to determine vehicle weight, aid vehicle diagnosis & show lift is lowered onto locks.



**Turf Maintenance Adapter**  
Slips on quickly for instant lifting without positioning swing arms and allows drive on ease for turf equipment.

# MODELS TP-16 & ML-220 SPECIFICATIONS

<b>Model:</b> .....	<b>TP-16</b>	<b>ML-220</b>
<b>Capacity:</b> .....	16,000 lbs.	20,000 lbs.
<b>Motor Rating:</b> .....	4 HP/208-230V, Single-phase (3ø optional)	
<b>Synchronization:</b> .....	Hydraulic fluid displacement using no chains, cables, or overhead obstructions	
<b>Arm Pad Height:</b> .....	4.5" min.	
<b>Lifting Height:</b> .....	6' under arm	
<b>Arm Pad Height @ Full Rise:</b> .....	6'5"	
<b>Max. Arm Pad Height with Adaptors:</b> .....	7'3" (includes 5", 7½" and 10" stackable lift adaptor pads)	
<b>Overall Width (adjustable):</b> .....	12' 7½"	
<b>Width Between Posts (adjustable 114-120"):</b> .....	10'	
<b>Width Between Lifting Arms (adjustable):</b> .....	8' 9"	
<b>Column Height:</b> .....	8' 7"	
<b>Max. Cylinder Height:</b> .....	13'6"	
<b>Overhead Hydraulic Line Height:</b> .....	15' Standard (adjustable to accommodate any height ceiling or routed in-floor)	
<b>Weight:</b> .....	3,200 lbs.	3,600 lbs.
<b>Concrete Floor Requirements:</b> .....	<b>Wide Base:</b> 5½" of 4,000 psi concrete <b>Standard Base:</b> 6½" of 4,000 psi concrete	
<b>Anchoring System: Included</b> .....	(16) ¾"x6" bolts	
<b>Mechanical Safety Locks:</b> .....	<b>Automatic;</b> multi-position starting @ 5" off the floor	
<b>Hydraulic Safety Systems:</b> .....	<b>Automatic;</b> all position	
<b>Swing Arm Restraints:</b> .....	<b>Automatic</b> upon ascent	
<b>Cylinders:</b> .....	2 (1 per column)	
<b>Drive System:</b> .....	Direct drive (using no cables or chains)	
<b>Lifting Speed:</b> .....	90 seconds (faster with lighter load)	
<b>5" Frame Adaptors (stackable):</b> .....	4 included as standard equipment	
<b>7½" Frame Adaptors (stackable):</b> .....	4 included as standard equipment	
<b>10" Frame Adaptors (stackable):</b> .....	4 included as standard equipment	
<b>Steel Carriage Bearings:</b> .....	(16) 4" diameter (8 per carriage) double sealed, self-lubricating ball bearing rollers	
<b>Floor Access Between Posts:</b> .....	Clear and unobstructed	
<b>Warranty:</b> .....	<b>25 years structural</b>	



**Learn how our two post vehicle lifts compare to the competition.**  
[mohawklifts.com/dare2compare](http://mohawklifts.com/dare2compare)

Mohawk builds the best products with the finest materials, to the highest standards. Just compare our lifts. Our staff will assist you with a fleet evaluation, design assistance and answer any technical questions you have. We invite your calls.

**MOHAWK LIFTS**

Mohawk Lifts, LLC.  
P.O. Box 110  
65 Vrooman Ave  
Amsterdam, NY 12010  
(800) 833-2006  
(518) 842-1431  
FAX: (518) 842-1289  
[www.mohawklifts.com](http://www.mohawklifts.com)

AVAILABLE UNDER DISCOUNTED GOVERNMENT  
CONTRACT IN ALL 50 STATES



**DISTRIBUTED BY:**