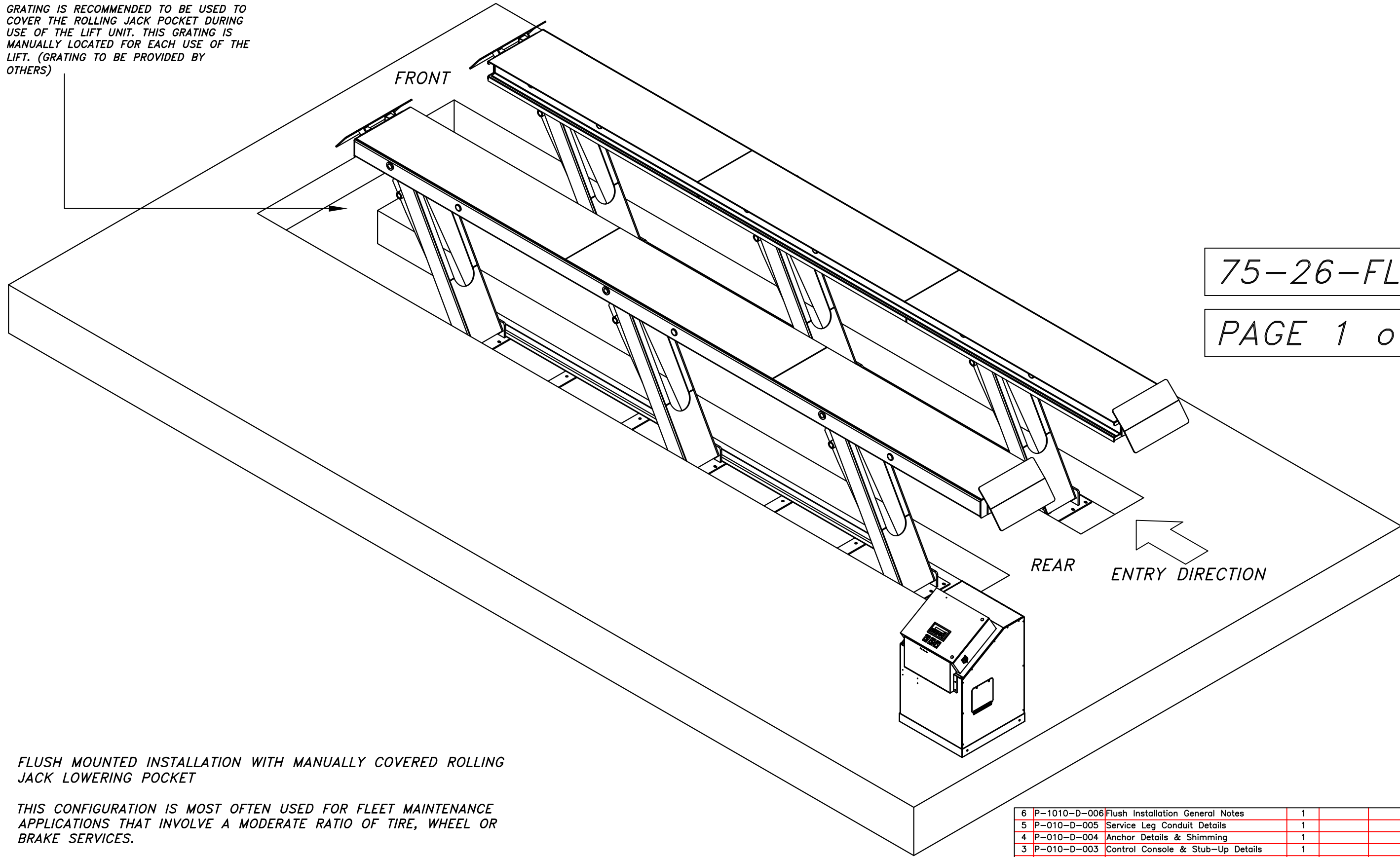


GRATING IS RECOMMENDED TO BE USED TO COVER THE ROLLING JACK POCKET DURING USE OF THE LIFT UNIT. THIS GRATING IS MANUALLY LOCATED FOR EACH USE OF THE LIFT. (GRATING TO BE PROVIDED BY OTHERS)



75-26-FLUSH

PAGE 1 of 2

FLUSH MOUNTED INSTALLATION WITH MANUALLY COVERED ROLLING JACK LOWERING POCKET

THIS CONFIGURATION IS MOST OFTEN USED FOR FLEET MAINTENANCE APPLICATIONS THAT INVOLVE A MODERATE RATIO OF TIRE, WHEEL OR BRAKE SERVICES.

THE FRONT OF THE LIFT UNIT IS PLACED TO THE FRONT OF THE LIFT TRENCH. FOR THIS INSTALLATION, THE LIFT UNIT WILL TRANSLATE TO THE REAR AS IT ARTICULATES UPWARD. ALLOW APPROXIMATELY 60 INCHES AT THE REAR OF THE LIFT FOR THIS MOTION.

ITEM	NAME	DESCRIPTION	QTY	MATERIAL	VENDOR	NOTE	MASS	PRICE
6	P-1010-D-006	Flush Installation General Notes	1					
5	P-010-D-005	Service Leg Conduit Details	1					
4	P-010-D-004	Anchor Details & Shimming	1					
3	P-010-D-003	Control Console & Stub-Up Details	1					
2	P-1310-D-002	75-26-Flush Lift Data Table	1					
1	P-1310-D-001	75-26-Flush, Pit Drawings & Sections	1					

**NOTICE OF CONFIDENTIAL INFORMATION**

INFORMATION CONTAINED HEREIN IS CONFIDENTIAL AND PROPERTY OF MOHAWK RESOURCES LTD.. WHERE DRAWING IS FURNISHED TO OTHERS IT SHALL BE USED SOLELY FOR PURPOSES OF INSPECTION, INSTALLATION, OR MAINTENANCE. THE INFORMATION SHALL NOT BE USED OR DISCLOSED BY THE RECIPIENT FOR ANY OTHER PURPOSES WHATSOEVER.

**NOTES:**

- REMOVE ALL SHARP CORNERS & EDGES.
- UNLESS OTHERWISE SPECIFIED, SURFACE FINISH TO BE 125 RMS.
- WELDING MEDIUM SHALL CONFORM TO AWS SPECIFICATIONS TO E-70XX ELECTRODES OR E-70TI CODE 5.3 FLUX CORE WIRE ONLY.

TOLERANCES:  
ANGULAR ± 1°  
FRACTIONAL ± .030  
DECIMAL:  
0.XX ± .030  
0.XXX ± .005

FILE NAME  
P-1310-A-001

P-1310-

NEXT ASSEMBLY

Parts List

SCALE  
1"=1'0"

CHECKED

DATE  
12/09

DRAWN  
dak

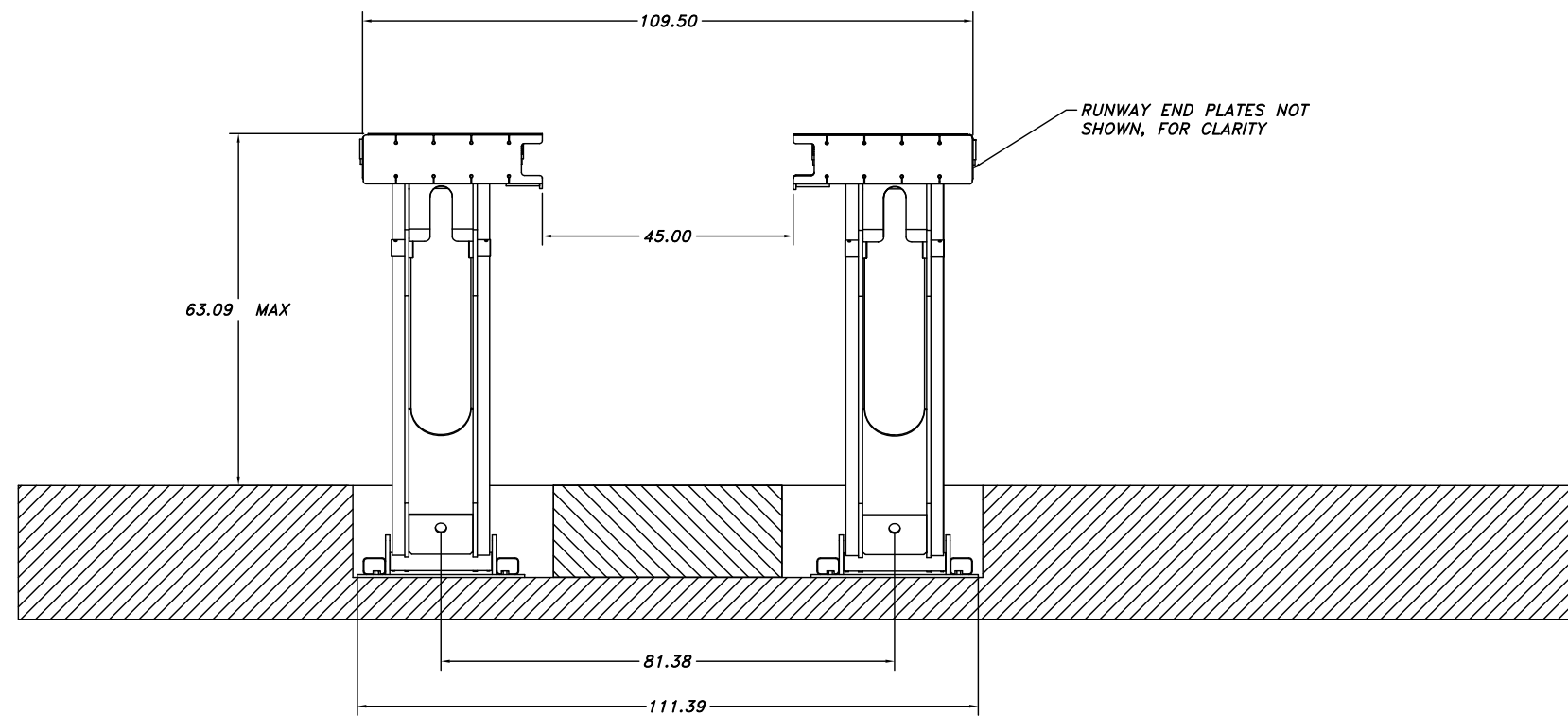
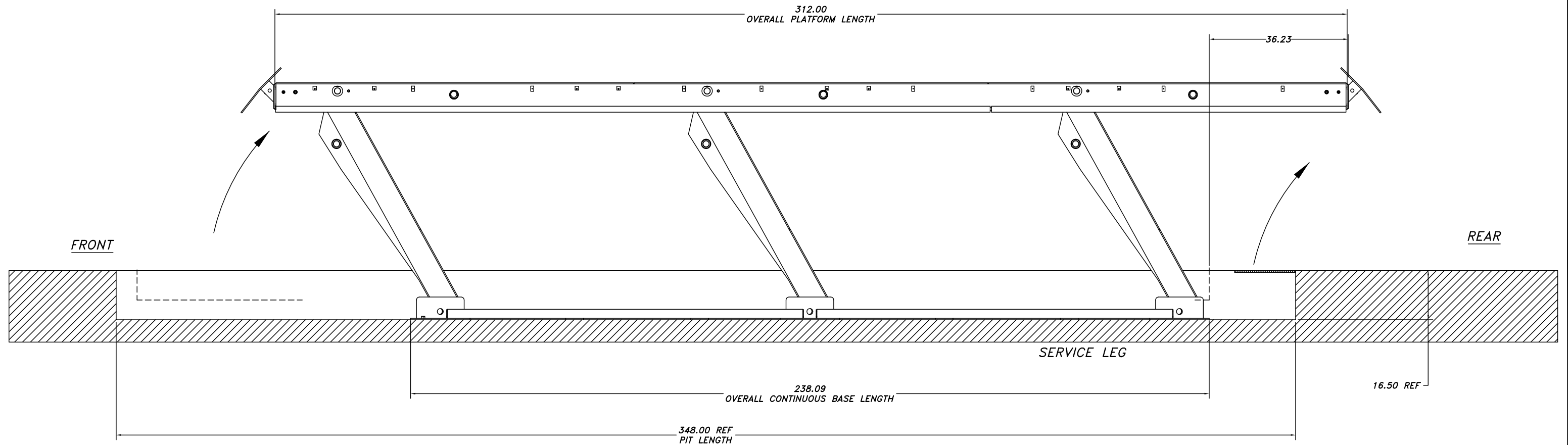
APPROVED

WEIGHT  
L.B.

**MOHAWK RESOURCES LTD.**

TITLE  
**INSTALLATION REQUIREMENTS  
DRAWING, 75-26-FLUSH**

FROM  
DRAWING NUMBER  
P-1310-A-001



75-26-FLUSH

PAGE 2 of 2

D-SIZE

FRONT ELEVATION VIEW

**NOTICE OF CONFIDENTIAL INFORMATION**

INFORMATION CONTAINED HEREIN IS CONFIDENTIAL AND PROPERTY OF MOHAWK RESOURCES LTD., WHERE DRAWING IS FURNISHED TO OTHERS IT SHALL BE USED SOLELY FOR PURPOSES OF INSPECTION, INSTALLATION, OR MAINTENANCE. THE INFORMATION SHALL NOT BE USED OR DISCLOSED BY THE RECIPIENT FOR ANY OTHER PURPOSES WHATSOEVER.

**NOTES:**

1. REMOVE ALL SHARP CORNERS & EDGES.
2. UNLESS OTHERWISE SPECIFIED, SURFACE FINISH TO BE 125 RMS.
3. WELDING MEDIUM SHALL CONFORM TO AWS SPECIFICATIONS TO E-70XX ELECTRODES OR E-70TI CODE 5.3 FLUX CORE WIRE ONLY.

**TOLERANCES:**

ANGULAR ± 1°  
 FRACTIONAL ± .030  
 DECIMAL:  
 0.XX ± .030  
 0.XXX ± .005

FILE NAME  
 P-1310-A-001

P-1310-

NEXT ASSEMBLY

SCALE  
 1"0"=1'0"

CHECKED

DATE  
 12/09

DRAWN  
 dak

APPROVED

WEIGHT  
 LB.

**MOHAWK RESOURCES LTD.**

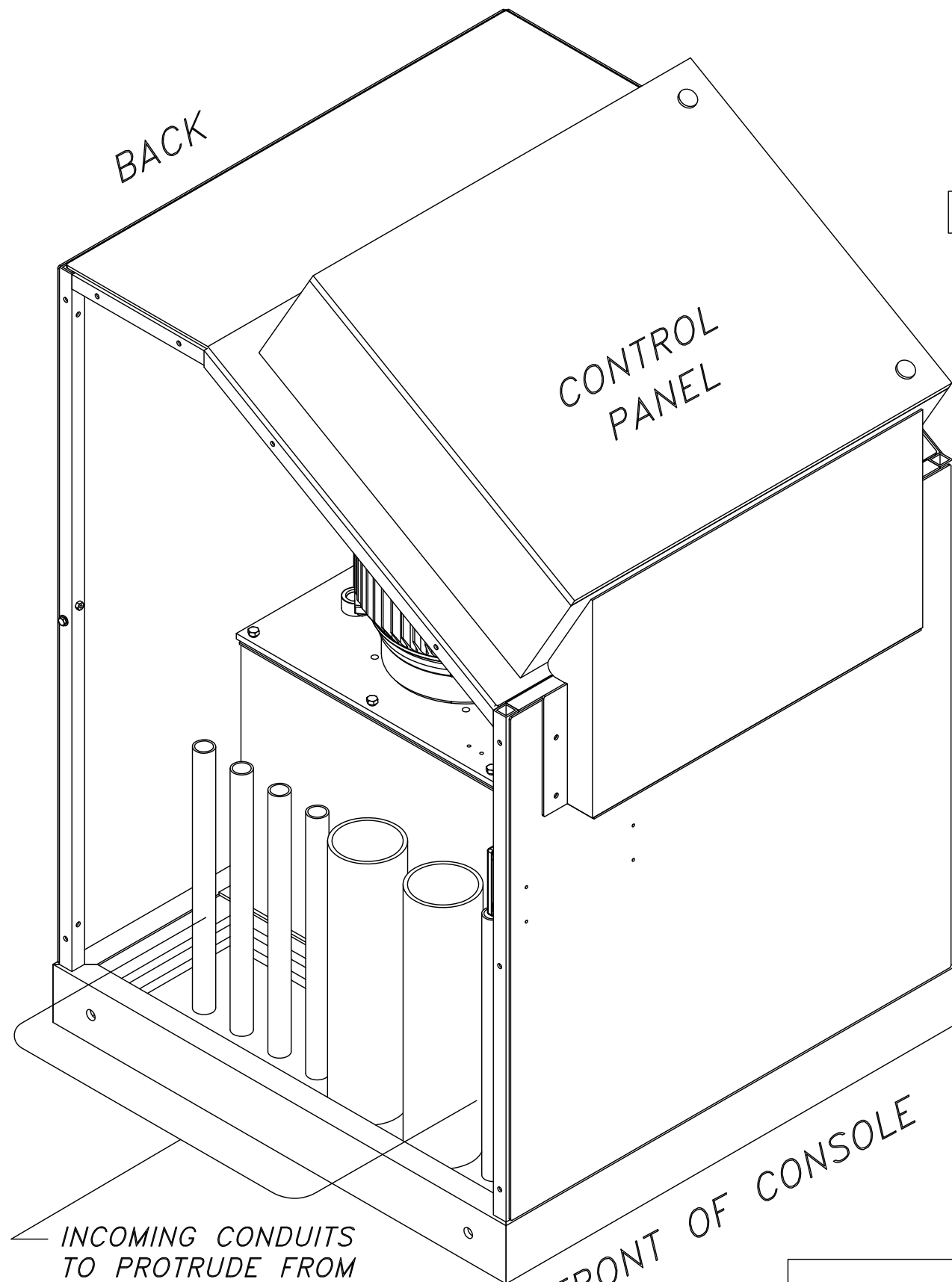
TITLE  
 INSTALLATION REQUIREMENTS  
 DRAWING, 75-26-FLUSH

FROM

DRAWING NUMBER  
 P-1310-A-001

#	DESCRIPTION	DATE	APPROVED
A	Metric units added	06/22/2004	rwv7089

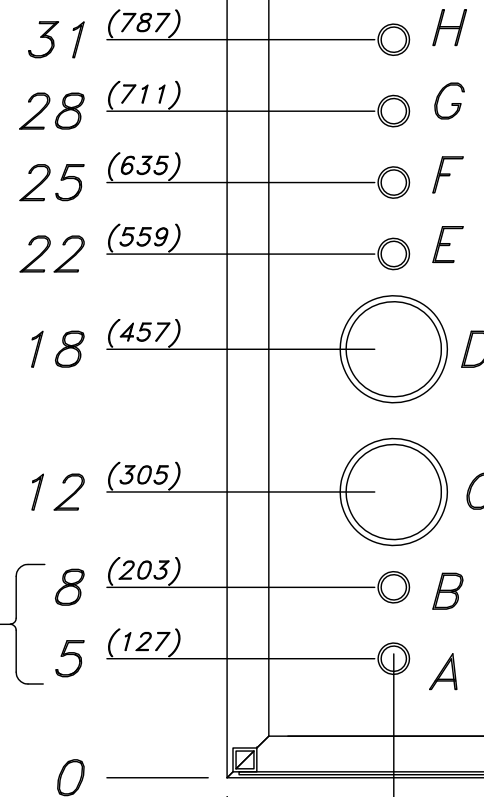
# TOP VIEW OF CONSOLE FRAME



1 3/4 TYP  
(44)

UNITS = INCH (mm)

BY OTHERS



10 5/8 (270)

BACK OF CONSOLE

32 1/2  
(826)

36  
(914)

FRONT OF CONSOLE

7 TYP (178)

36 (914)

### CONDUIT SIZES & APPLICATION:

- A: 1" (25.4) (MIN) SCHED 40 STEEL PIPE - INCOMING POWER CUSTOMER PREFERENCE
- B: 1" (25.4) (MIN) SCHED 40 STEEL PIPE - INCOMING AIRLINE PREFERENCE
- C,D: 4" (101) SCHED 40 PVC PIPE - HYDRAULIC & AIR TO LIFT OPTIONAL
- E,F,G,H: 1" (25.4) (MIN) SCHED 40 STEEL PIPE - ELECTRICAL TO LIFT

\* NOTE: USE SMOOTH ELECTRICAL 90'S IN CONDUITS, NOT PLUMBING 90'S !!

## CONTROL CONSOLE & STUB-UP DETAILS

D-SIZE

### NOTICE OF CONFIDENTIAL INFORMATION

INFORMATION CONTAINED HEREIN IS CONFIDENTIAL AND PROPERTY OF MOHAWK RESOURCES LTD.. WHERE DRAWING IS FURNISHED TO OTHERS IT SHALL BE USED SOLELY FOR PURPOSES OF INSPECTION, INSTALLATION, OR MAINTENANCE. THE INFORMATION SHALL NOT BE USED OR DISCLOSED BY THE RECIPIENT FOR ANY OTHER PURPOSES WHATSOEVER.

### NOTES:

1. REMOVE ALL SHARP CORNERS & EDGES.
2. UNLESS OTHERWISE SPECIFIED, SURFACE FINISH TO BE 125 RMS.
3. WELDING MEDIUM SHALL CONFORM TO AWS SPECIFICATIONS TO E-70XX ELECTRODES OR E-70TI CODE 5.3 FLUX CORE WIRE ONLY.

TOLERANCES:  
ANGULAR: ± 1°  
FRACTIONAL: ± .030  
DECIMAL: ± .030  
0.XXX: ± .005

FILE NAME  
P-010-D-003

P-010-A-001

NEXT ASSEMBLY

SCALE

CHECKED

DATE  
4/03

DRAWN  
dak

APPROVED

WEIGHT  
L.B.

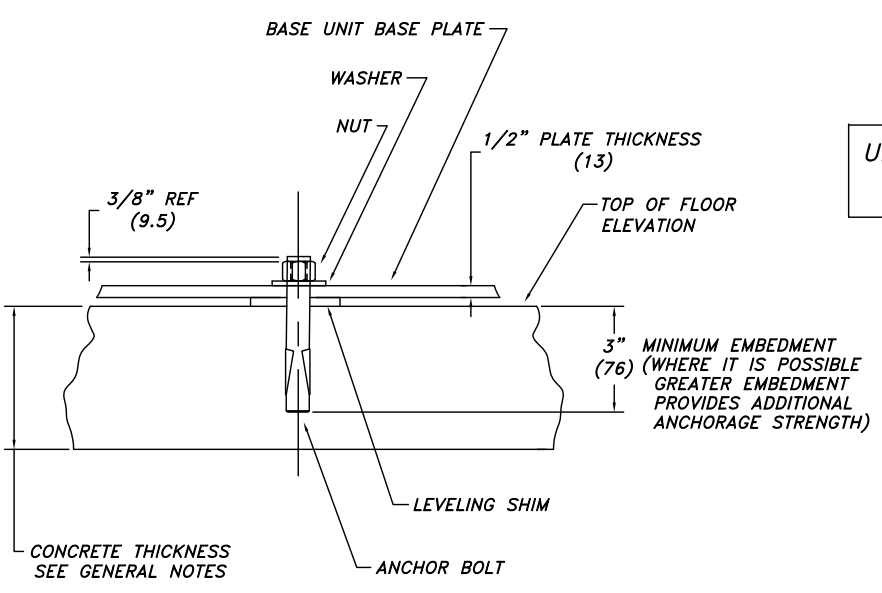
MOHAWK RESOURCES LTD.

TITLE CONTROL CONSOLE & STUB-UP DETAILS

FROM DRAWING NUMBER  
P-010-D-003

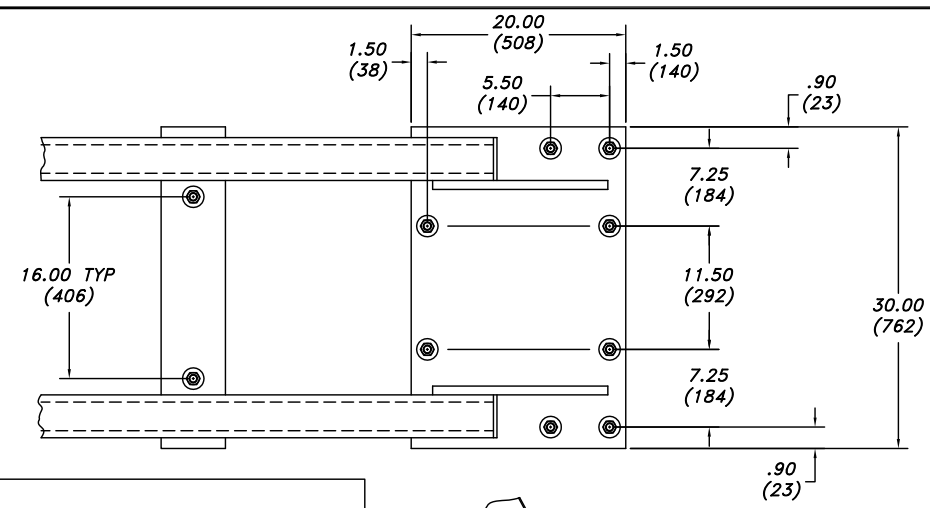


#	DESCRIPTION	DATE	APPROVED
A	METRIC DIMENSIONS ADDED	11/12/2009	dak0879

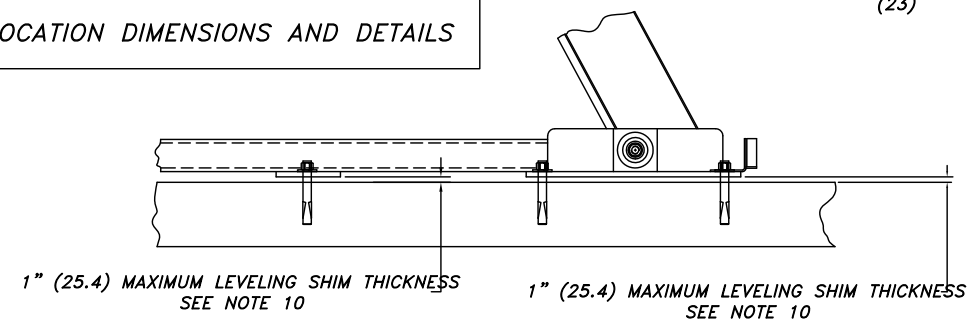


**ANCHOR BOLT DETAIL**

UNITS = INCH (mm)  
= POUND (kg)

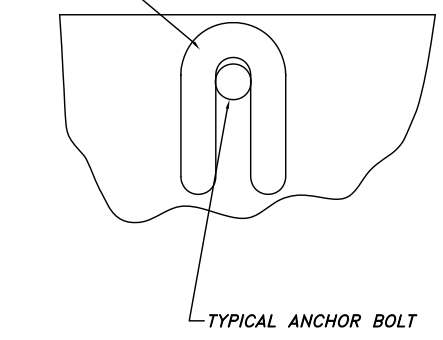


**ANCHOR BOLT LOCATION DIMENSIONS AND DETAILS**



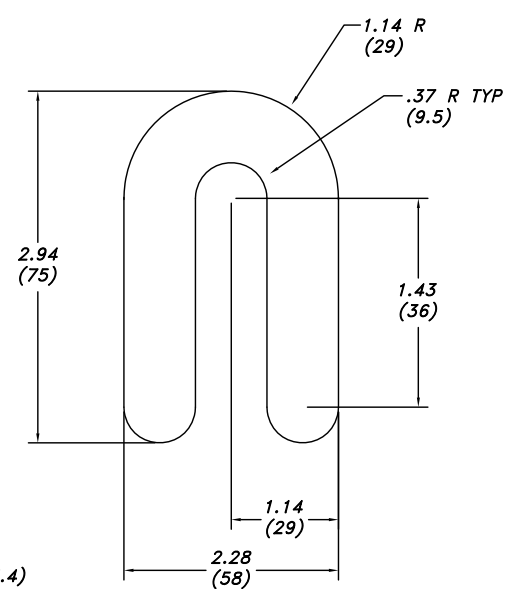
**ANCHOR BOLT DETAIL**

PLACE LEVELING SHIMS IN A STRAIGHT AND ORDERLY FASHION AT EACH ANCHOR BOLT. USE THIN SHIMS TO FULLY FILL OUT EACH LOCATION.



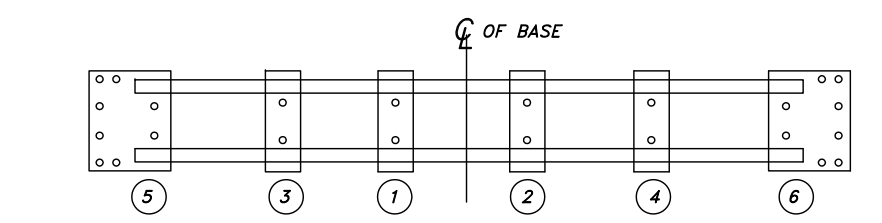
THE MAXIMUM THICKNESS OF ANY STACK OF SHIMS IS 1" (25.4) SEE NOTES 9 & 10

**PLACEMENT OF LEVELING SHIM DETAIL**



LEVELING SHIMS ARE AVAILABLE IN A RANGE OF THICKNESSES FROM 1/16" (1.6), 1/8" (3.2), & 1/4" (6.3)

**LEVELING SHIM DETAIL**



**REPRESENTATIVE TIGHTENING SEQUENCE FOR ANCHOR BOLTS**  
TIGHTENING FROM CENTER OF BASE OUTWARD

APPROVED ANCHOR BOLTS PROVIDED BY MOHAWK LIFT

ANCHOR BOLTS ARE MANUFACTURED BY

WEJ-IT FASTENING SYSTEMS  
2415 EAST 13TH PLACE  
TULSA, OKLAHOMA 74104

PHONE 918-744-7444  
OR 800-343-1264

WEB SITE WWW.WEJIT.COM

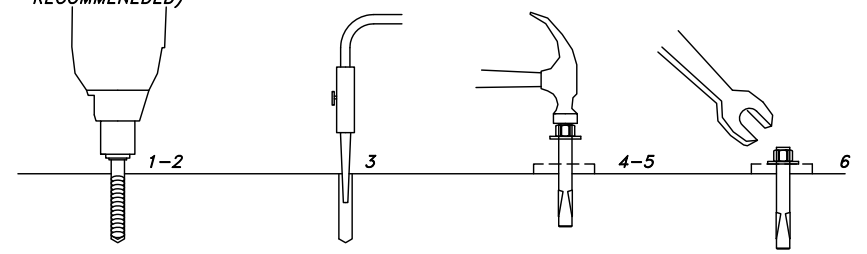
ANCHORS SPECIFIED ARE: "THE ORIGINAL WEJ-IT" EXPANSION ANCHORS, 3/4" (19mm) DIA

CATALOG NUMBER	LENGTH
3460	6" (152)
3482	8 1/2" (216)
3410	10" (254)

NO OTHER ANCHOR BOLT SUBSTITUTIONS ARE PERMITTED WITHOUT WRITTEN APPROVAL FROM MOHAWK RESOURCES, LTD. UNDER CERTAIN CIRCUMSTANCES EPOXY GROUTED THREADED ROD ANCHORAGE MAY BE USED BUT ANY USE OF SUCH REQUIRES WRITTEN APPROVAL OF MOHAWK RESOURCES, LTD. ANY OTHER UNAPPROVED ANCHOR BOLT PRODUCT MAY NOT HAVE THE DOCUMENTED STRENGTH TO MEET THE CERTIFICATION REQUIREMENTS OF THE AUTOMOTIVE LIFT INSTITUTE AND MAY AFFECT THE CERTIFICATION OF THE INSTALLATION.

**INSTALLATION INSTRUCTIONS**

1. DRILL THE HOLE PERPENDICULAR TO THE WORK SURFACE. \*TO ASSURE FULL HOLDING POWER, DO NOT REAM THE HOLE OR ALLOW THE DRILL TO WOBBLE.
2. DRILL THE HOLE DEEPER THAN THE INTENDED EMBEDMENT OF THE ANCHOR, BUT NOT CLOSER THAN TWO ANCHOR DIAMETERS TO THE BOTTOM (OPPOSITE) SURFACE OF THE CONCRETE.
3. CLEAN THE HOLE USING COMPRESSED AIR AND A NYLON BRUSH. A CLEAN HOLE IS NECESSARY FOR PROPER PERFORMANCE.
4. TURN THE NUT ONTO THE ANCHOR UNTIL CONTACT IS MADE WITH THE TOP OF THE SPEARS AND THE BOTTOM OF THE WASHER. INSERT ANCHOR INTO HOLE.
5. TAP ANCHOR INTO HOLE WITH A 2 1/2 LBS (1.1 kg) HAMMER UNTIL WASHER RESTS SOLIDLY AGAINST FIXTURE.
6. TIGHTEN THE NUT TO 80 FT-LBS (59 N-m) MAXIMUM TORQUE AND NOT LESS THAN 3 FULL TURNS, BUT NOT MORE THAN 5 TURNS PAST THE HAND TIGHT POSITION. (USE OF AN IMPACT WRENCH FOR INSTALLATION OF ANCHORS IS NOT RECOMMENDED)



\*ALWAYS WEAR SAFETY GLASSES. FOLLOW THE DRILL MANUFACTURER'S SAFETY INSTRUCTIONS. USE ONLY SOLID CARBIDE-TIPPED DRILL BITS MEETING ANSI B212.15 DIAMETER STANDARDS.

**NOTICE OF CONFIDENTIAL INFORMATION**

INFORMATION CONTAINED HEREIN IS CONFIDENTIAL AND PROPERTY OF MOHAWK RESOURCES LTD. WHERE DRAWING IS FURNISHED TO OTHERS IT SHALL BE USED SOLELY FOR PURPOSES OF INSPECTION, INSTALLATION, OR MAINTENANCE. THE INFORMATION SHALL NOT BE USED OR DISCLOSED BY THE RECIPIENT FOR ANY OTHER PURPOSES WHATSOEVER.

NOTES:  
1. REMOVE ALL SHARP CORNERS & EDGES.  
2. UNLESS OTHERWISE SPECIFIED, SURFACE FINISH TO BE 125 RMS.  
3. WELDING MEDIUM SHALL CONFORM TO AWS SPECIFICATIONS TO E-70XX ELECTRODES OR E-70TI CODE 5.3 FLUX CORE WIRE ONLY.

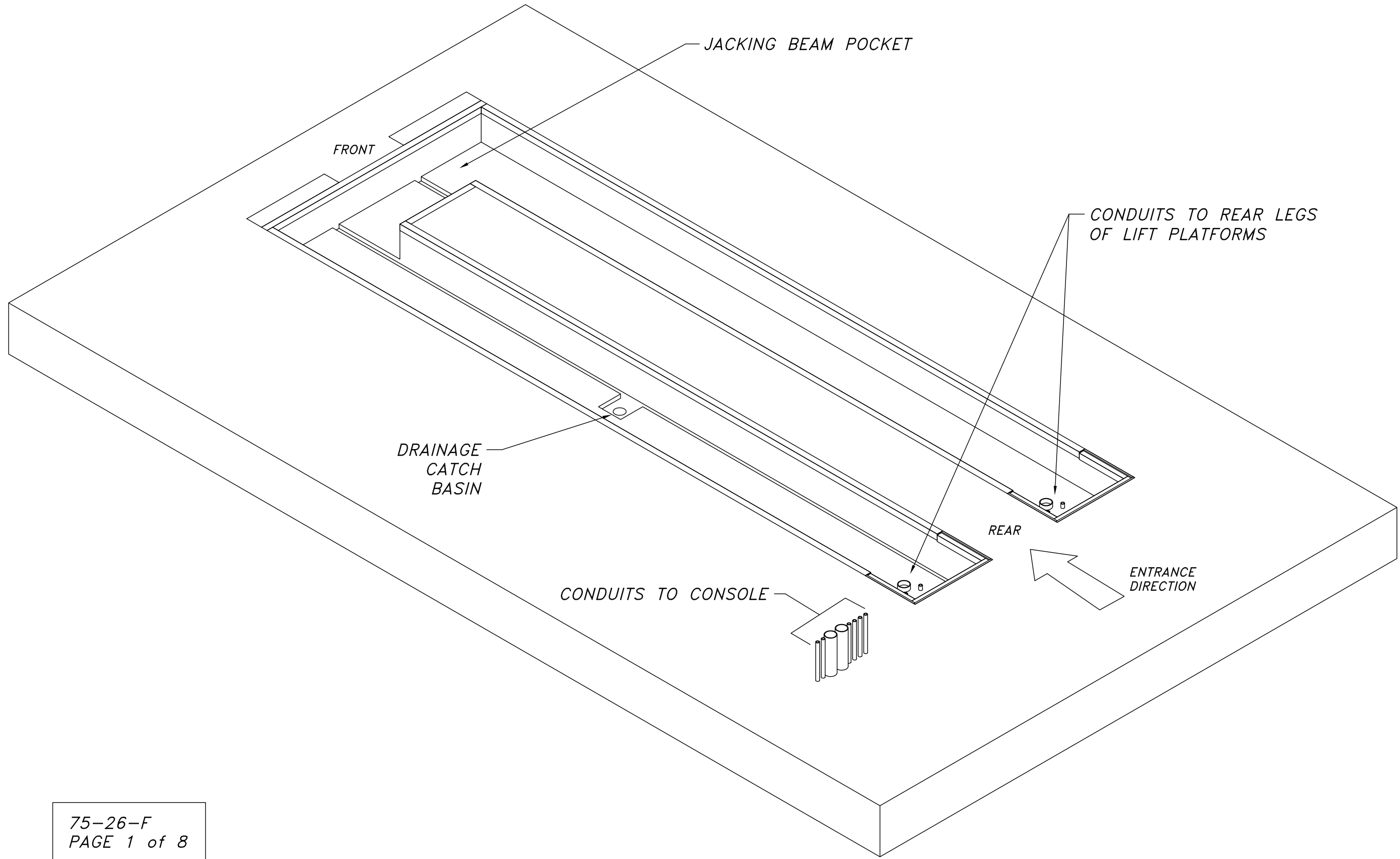
TOLERANCES:  
ANGULAR ± 1°  
FRACTIONAL ± .030  
DECIMAL ± .030  
0.XX ± .005  
0.XXX ± .005

FILE NAME P-010-D-004  
NEXT ASSEMBLY

SCALE  
CHECKED  
DATE 4/03  
DRAWN dak  
APPROVED  
WEIGHT LB.

**MOHAWK RESOURCES LTD.**  
TITLE ANCHOR DETAILS & SHIMMING  
DRAWING NUMBER P-010-D-004

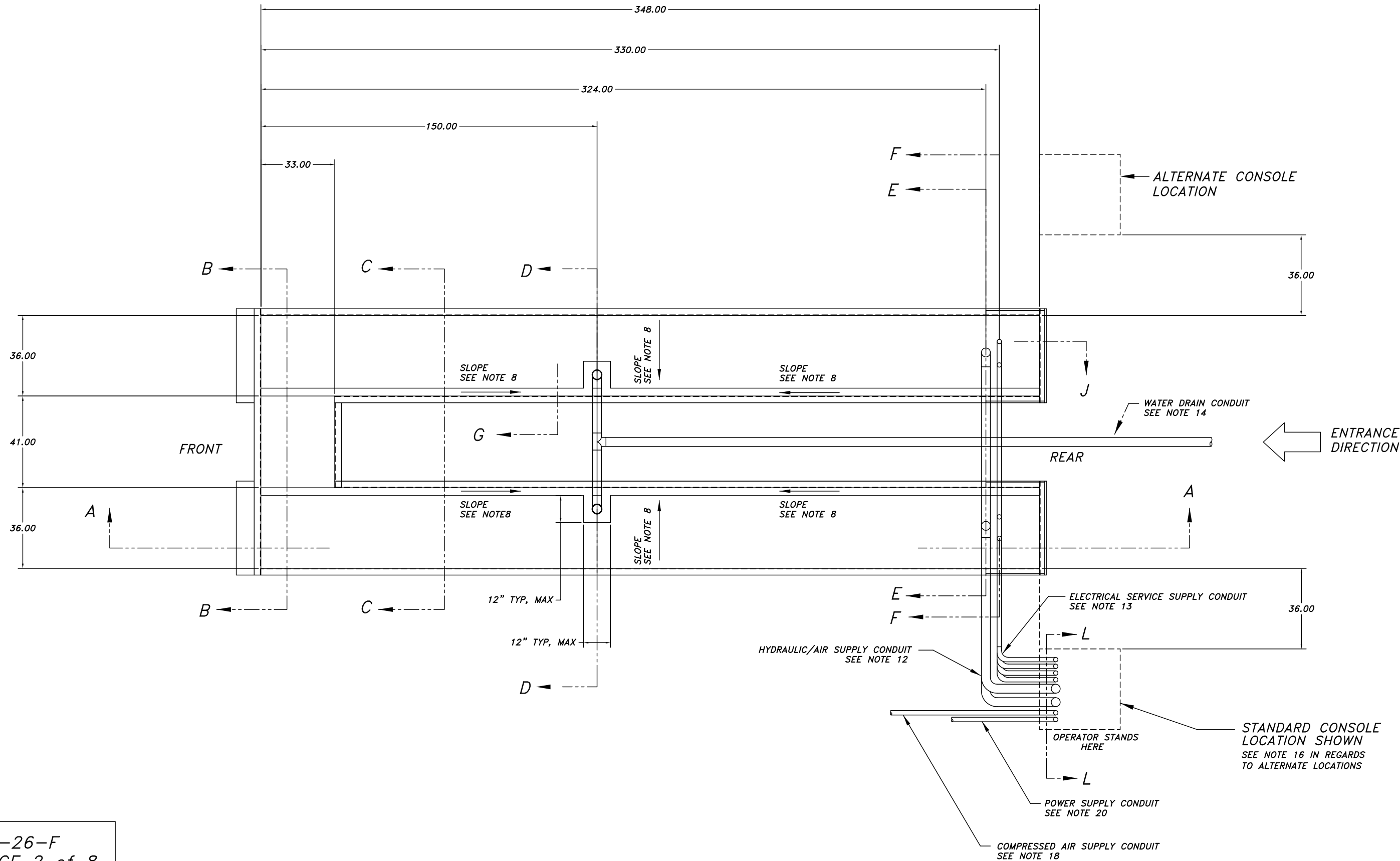




75-26-F  
PAGE 1 of 8

D-SIZE

<b>NOTICE OF CONFIDENTIAL INFORMATION</b> <small>INFORMATION CONTAINED HEREIN IS CONFIDENTIAL AND PROPERTY OF MOHAWK RESOURCES LTD.. WHERE DRAWING IS FURNISHED TO OTHERS IT SHALL BE USED SOLELY FOR PURPOSES OF INSPECTION, INSTALLATION, OR MAINTENANCE. THE INFORMATION SHALL NOT BE USED OR DISCLOSED BY THE RECIPIENT FOR ANY OTHER PURPOSES WHATSOEVER.</small>	<b>NOTES:</b> 1. REMOVE ALL SHARP CORNERS & EDGES. 2. UNLESS OTHERWISE SPECIFIED, SURFACE FINISH TO BE 125 RMS. 3. WELDING MEDIUM SHALL CONFORM TO AWS SPECIFICATIONS TO E-70XX ELECTRODES OR E-70TI CODE 5.3 FLUX CORE WIRE ONLY.	<b>TOLERANCES:</b> ANGULAR $\pm 1^\circ$ FRACTIONAL $\pm .030$ DECIMAL: 0.XX $\pm .030$ 0.XXX $\pm .005$	P-1310-	SCALE 3/64	DRAWN dak	<b>MOHAWK RESOURCES LTD.</b> TITLE PIT DRAWINGS & SECTIONS FOR 75-26-F (FLUSH)
			FILE NAME P-1310-D-001	CHECKED	APPROVED	
			NEXT ASSEMBLY			DRAWING NUMBER P-1310-D-001



75-26-F  
PAGE 2 of 8

D-SIZE

**NOTICE OF CONFIDENTIAL INFORMATION**

INFORMATION CONTAINED HEREIN IS CONFIDENTIAL AND PROPERTY OF MOHAWK RESOURCES LTD., WHERE DRAWING IS FURNISHED TO OTHERS IT SHALL BE USED SOLELY FOR PURPOSES OF INSPECTION, INSTALLATION, OR MAINTENANCE. THE INFORMATION SHALL NOT BE USED OR DISCLOSED BY THE RECIPIENT FOR ANY OTHER PURPOSES WHATSOEVER.

**NOTES:**

1. REMOVE ALL SHARP CORNERS & EDGES.
2. UNLESS OTHERWISE SPECIFIED, SURFACE FINISH TO BE 125 RMS.
3. WELDING MEDIUM SHALL CONFORM TO AWS SPECIFICATIONS TO E-70XX ELECTRODES OR E-70TI CODE 5.3 FLUX CORE WIRE ONLY.

TOLERANCES:  
ANGULAR ± 1°  
FRACTIONAL ± .030  
DECIMAL ± .030  
0.XX ± .030  
0.XXX ± .005

FILE NAME  
P-1310-D-001

P-1310-

NEXT ASSEMBLY

SCALE  
3/64

CHECKED

DATE  
12/2/09

DRAWN  
dak

APPROVED

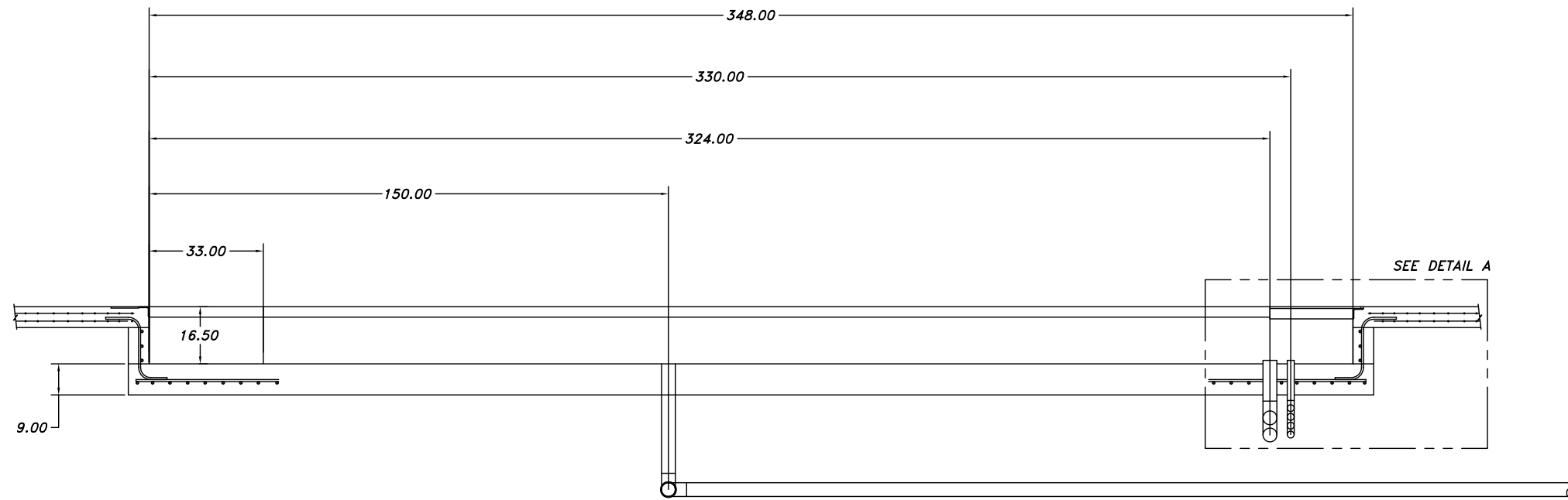
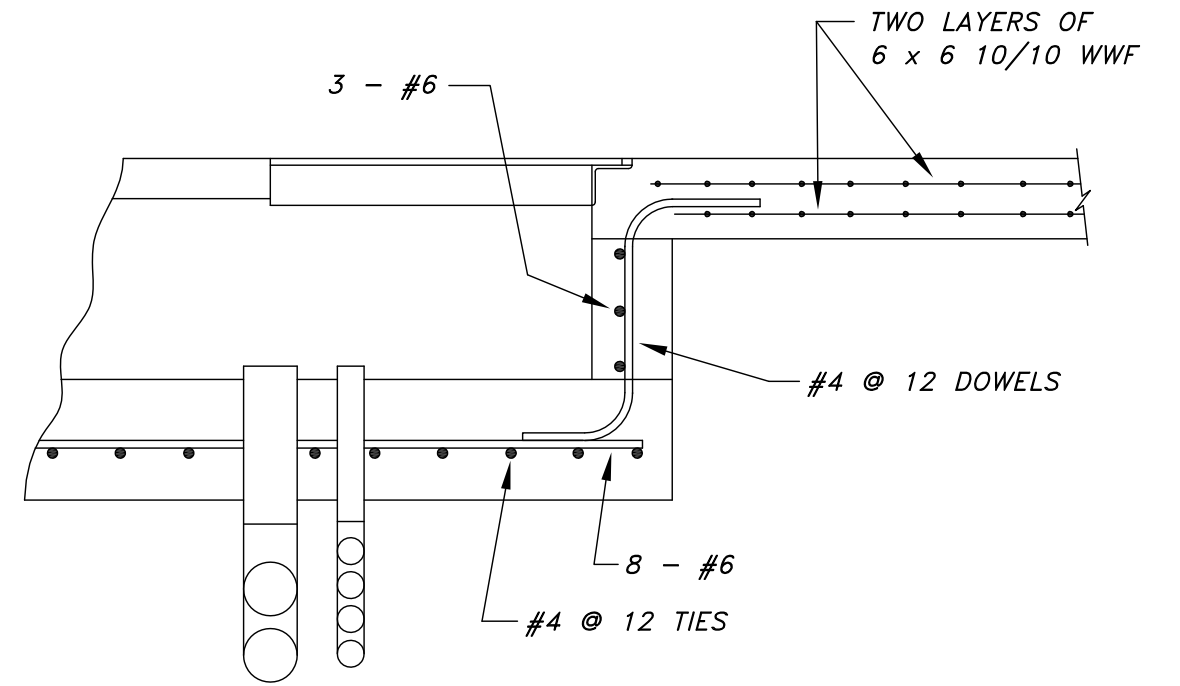
WEIGHT  
LB.

**MOHAWK RESOURCES LTD.**

TITLE  
PIT DRAWINGS & SECTIONS  
FOR 75-26-F (FLUSH)

DRAWING NUMBER  
P-1310-D-001

DETAIL A



SECTION A-A

75-26-F  
PAGE 3 of 8

**NOTICE OF CONFIDENTIAL INFORMATION**

INFORMATION CONTAINED HEREIN IS CONFIDENTIAL AND PROPERTY OF MOHAWK RESOURCES LTD., WHERE DRAWING IS FURNISHED TO OTHERS IT SHALL BE USED SOLELY FOR PURPOSES OF INSPECTION, INSTALLATION, OR MAINTENANCE. THE INFORMATION SHALL NOT BE USED OR DISCLOSED BY THE RECIPIENT FOR ANY OTHER PURPOSES WHATSOEVER.

**NOTES:**

1. REMOVE ALL SHARP CORNERS & EDGES.
2. UNLESS OTHERWISE SPECIFIED, SURFACE FINISH TO BE 125 RMS.
3. WELDING MEDIUM SHALL CONFORM TO AWS SPECIFICATIONS TO E-70XX ELECTRODES OR E-70TI CODE 5.3 FLUX CORE WIRE ONLY.

**TOLERANCES:**  
ANGULAR ± 1°  
FRACTIONAL ± .030  
DECIMAL 0.XX ± .030  
0.XXX ± .005

FILE NAME  
P-1310-D-001

P-1310-

NEXT ASSEMBLY

SCALE  
3/64

CHECKED

DATE  
12/2/09

DRAWN  
dak

APPROVED

WEIGHT  
LB.

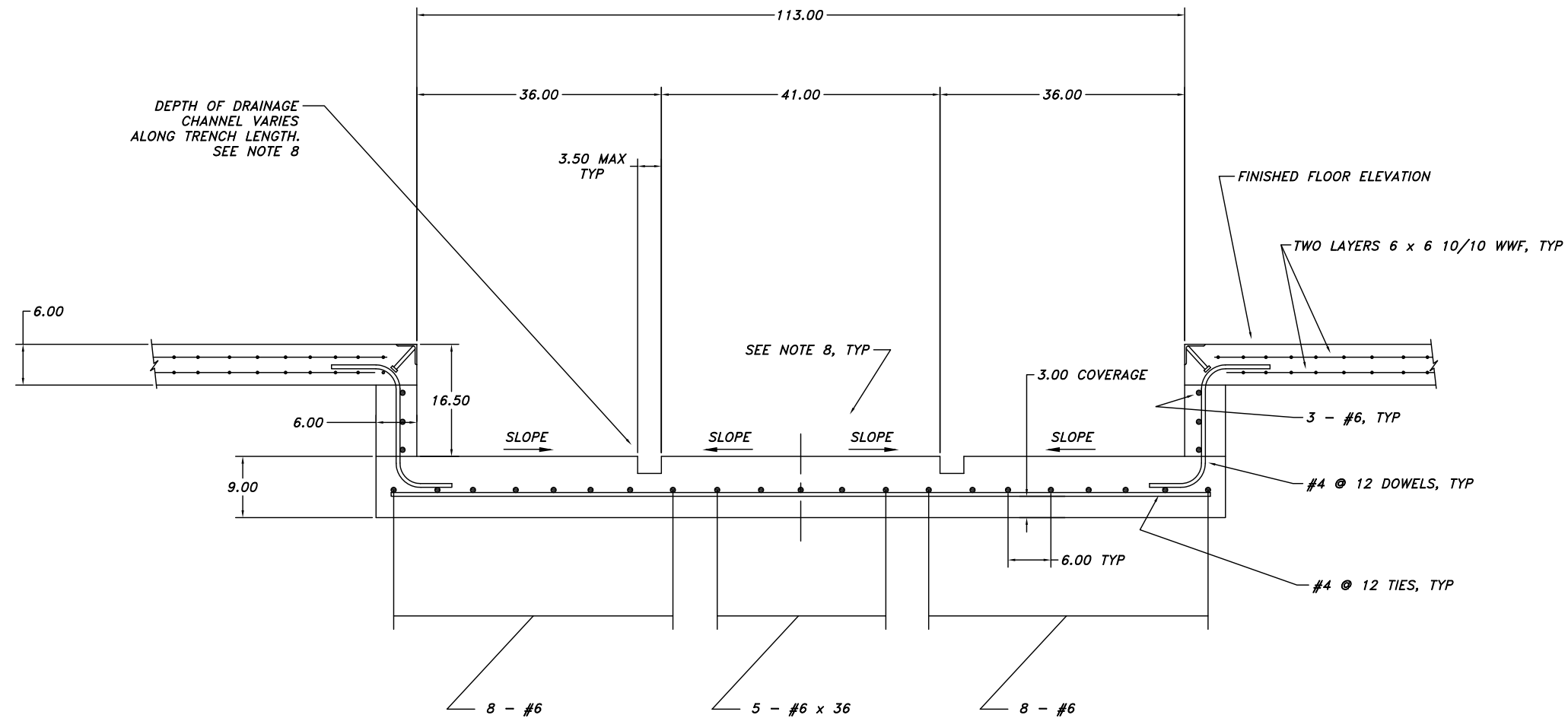
**MOHAWK RESOURCES LTD.**

TITLE  
PIT DRAWINGS & SECTIONS  
FOR 75-26-F (FLUSH)

FROM

DRAWING NUMBER  
P-1310-D-001





SECTION B-B

75-26-F  
PAGE 4 of 8

**NOTICE OF CONFIDENTIAL INFORMATION**

INFORMATION CONTAINED HEREIN IS CONFIDENTIAL AND PROPERTY OF MOHAWK RESOURCES LTD., WHERE DRAWING IS FURNISHED TO OTHERS IT SHALL BE USED SOLELY FOR PURPOSES OF INSPECTION, INSTALLATION, OR MAINTENANCE. THE INFORMATION SHALL NOT BE USED OR DISCLOSED BY THE RECIPIENT FOR ANY OTHER PURPOSES WHATSOEVER.

**NOTES:**

1. REMOVE ALL SHARP CORNERS & EDGES.
2. UNLESS OTHERWISE SPECIFIED, SURFACE FINISH TO BE 125 RMS.
3. WELDING MEDIUM SHALL CONFORM TO AWS SPECIFICATIONS TO E-70XX ELECTRODES OR E-70TI CODE 5.3 FLUX CORE WIRE ONLY.

**TOLERANCES:**

ANGULAR ± 1°  
FRACTIONAL ± .030  
DECIMAL ± .030  
0.XXX ± .005

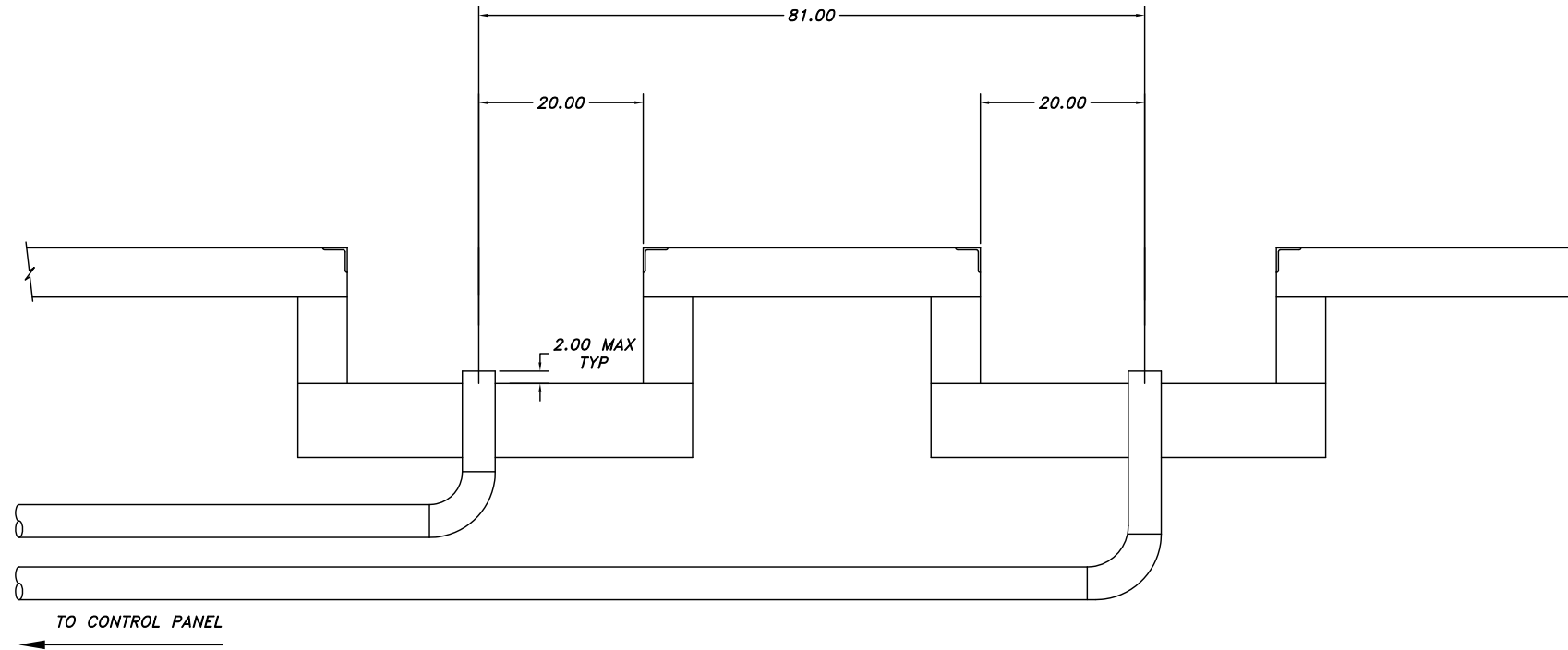
FILE NAME  
P-1310-D-001

P-1310-	
	NEXT ASSEMBLY

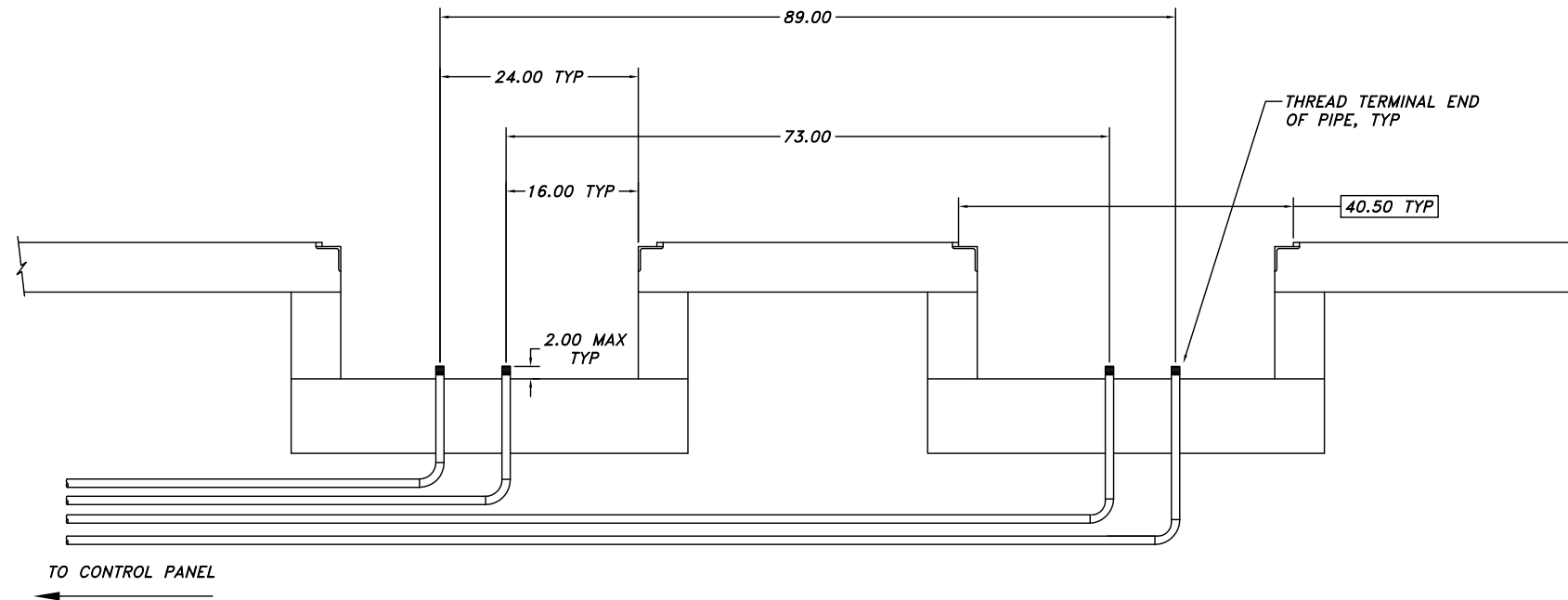
SCALE 3/32	DRAWN dak
CHECKED	APPROVED
DATE 12/2/09	WEIGHT LB.

<b>MOHAWK RESOURCES LTD.</b>	
TITLE <i>PIT DRAWINGS &amp; SECTIONS FOR 75-26-F (FLUSH)</i>	
FROM	DRAWING NUMBER P-1310-D-001





SECTION E-E



SECTION F-F

75-26-F  
PAGE 6 of 8

D-SIZE

**NOTICE OF CONFIDENTIAL INFORMATION**  
 INFORMATION CONTAINED HEREIN IS CONFIDENTIAL AND PROPERTY OF MOHAWK RESOURCES LTD., WHERE DRAWING IS FURNISHED TO OTHERS IT SHALL BE USED SOLELY FOR PURPOSES OF INSPECTION, INSTALLATION, OR MAINTENANCE. THE INFORMATION SHALL NOT BE USED OR DISCLOSED BY THE RECIPIENT FOR ANY OTHER PURPOSES WHATSOEVER.

**NOTES:**  
 1. REMOVE ALL SHARP CORNERS & EDGES.  
 2. UNLESS OTHERWISE SPECIFIED, SURFACE FINISH TO BE 125 RMS.  
 3. WELDING MEDIUM SHALL CONFORM TO AWS SPECIFICATIONS TO E-70XX ELECTRODES OR E-70TI CODE 5.3 FLUX CORE WIRE ONLY.

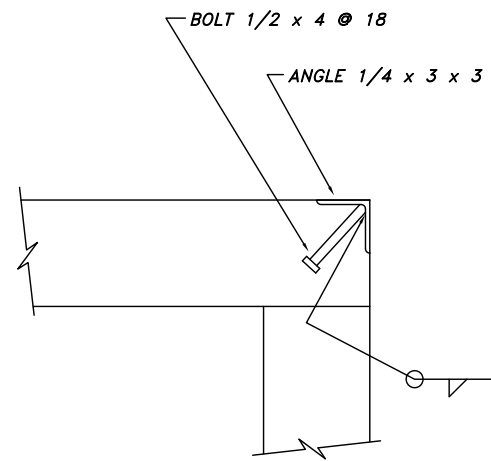
**TOLERANCES:**  
 ANGULAR ± 1°  
 FRACTIONAL ± .030  
 DECIMAL 0.XX ± .030  
 0.XXX ± .005

FILE NAME: P-1310-D-001  
 NEXT ASSEMBLY

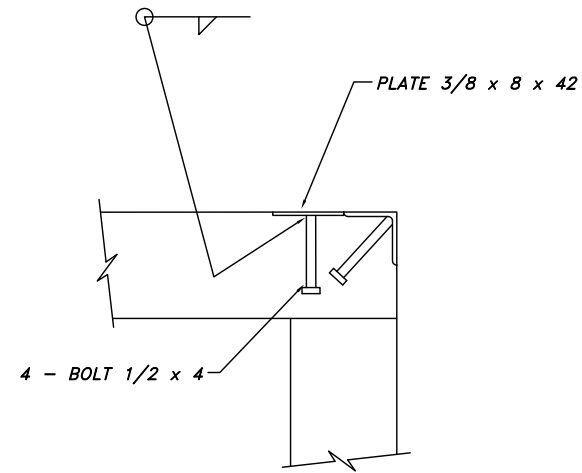
SCALE: 3/32  
 DATE: 12/2/09

DRAWN: dak  
 APPROVED: [Signature]  
 WEIGHT: LB.

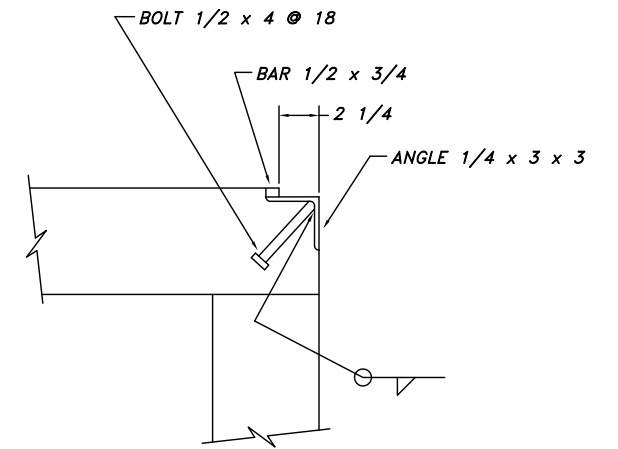
**MOHAWK RESOURCES LTD.**  
 TITLE: PIT DRAWINGS & SECTIONS FOR 75-26-F (FLUSH)  
 FROM: DRAWING NUMBER P-1310-D-001



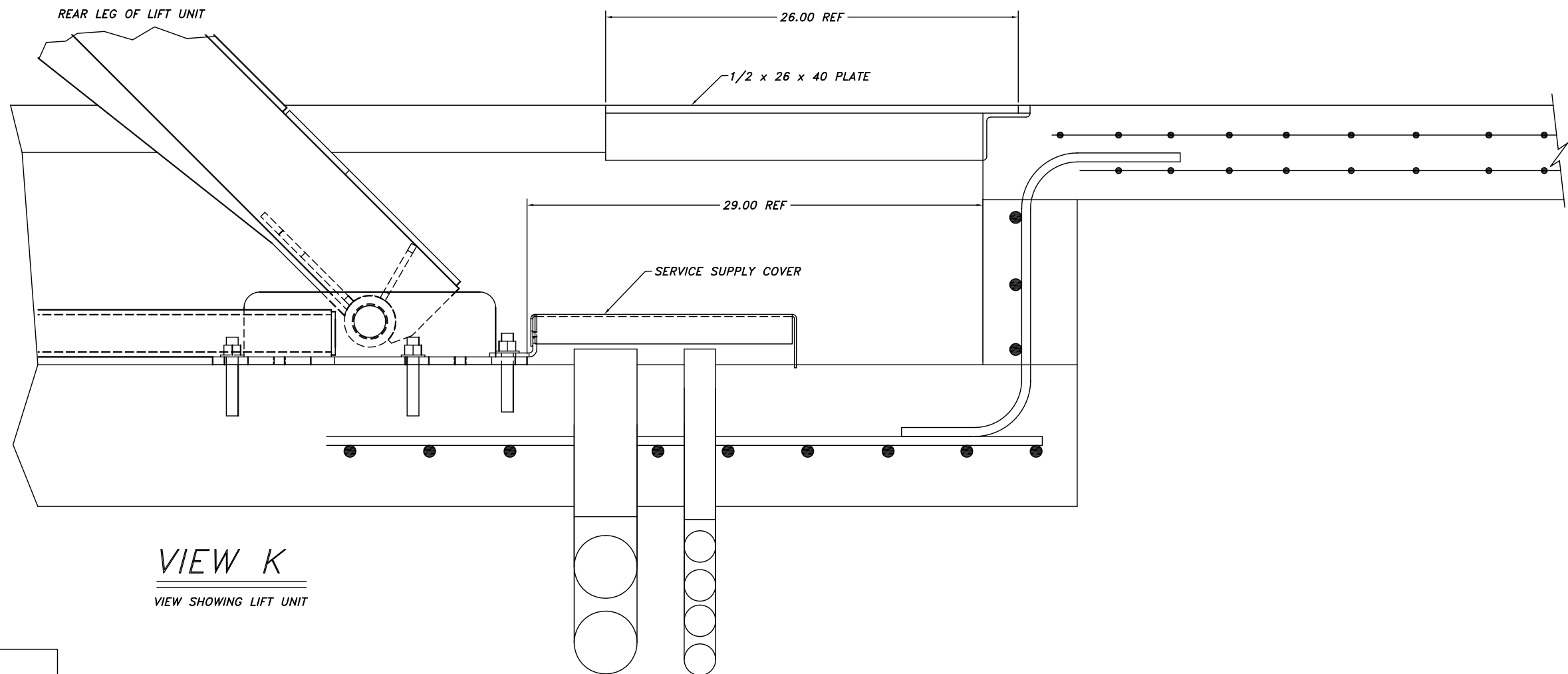
SECTION G



SECTION H



SECTION J



VIEW K  
VIEW SHOWING LIFT UNIT

75-26-F  
PAGE 7 of 8

**NOTICE OF CONFIDENTIAL INFORMATION**

INFORMATION CONTAINED HEREIN IS CONFIDENTIAL AND PROPERTY OF MOHAWK RESOURCES LTD., WHERE DRAWING IS FURNISHED TO OTHERS IT SHALL BE USED SOLELY FOR PURPOSES OF INSPECTION, INSTALLATION, OR MAINTENANCE. THE INFORMATION SHALL NOT BE USED OR DISCLOSED BY THE RECIPIENT FOR ANY OTHER PURPOSES WHATSOEVER.

**NOTES:**

1. REMOVE ALL SHARP CORNERS & EDGES.
2. UNLESS OTHERWISE SPECIFIED, SURFACE FINISH TO BE 125 RMS.
3. WELDING MEDIUM SHALL CONFORM TO AWS SPECIFICATIONS TO E-70XX ELECTRODES OR E-70TI CODE 5.3 FLUX CORE WIRE ONLY.

TOLERANCES:  
ANGULAR ± 1°  
FRACTIONAL ± .030  
DECIMAL ± .030  
0.XX ± .030  
0.XXX ± .005

FILE NAME  
P-1310-D-001

P-1310-

NEXT ASSEMBLY

SCALE  
3/32

CHECKED

DATE  
12/2/09

DRAWN  
dak

APPROVED

WEIGHT  
LB.

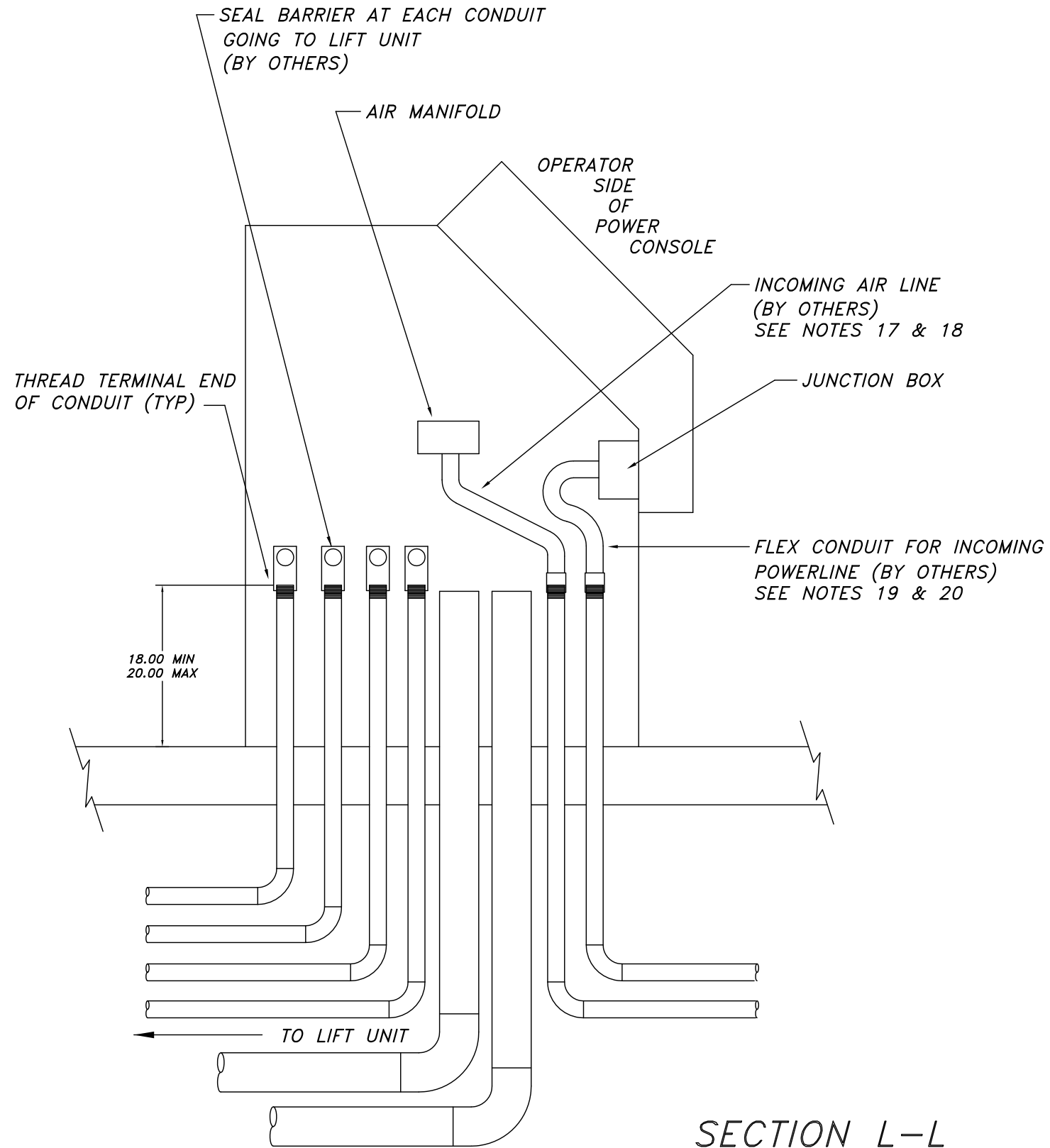
**MOHAWK RESOURCES LTD.**

TITLE *PIT DRAWINGS & SECTIONS FOR 75-26-F (FLUSH)*

FROM

DRAWING NUMBER  
P-1310-D-001





SECTION L-L

75-26-F  
PAGE 8 of 8

D-SIZE

<b>NOTICE OF CONFIDENTIAL INFORMATION</b> INFORMATION CONTAINED HEREIN IS CONFIDENTIAL AND PROPERTY OF MOHAWK RESOURCES LTD., WHERE DRAWING IS FURNISHED TO OTHERS IT SHALL BE USED SOLELY FOR PURPOSES OF INSPECTION, INSTALLATION, OR MAINTENANCE. THE INFORMATION SHALL NOT BE USED OR DISCLOSED BY THE RECIPIENT FOR ANY OTHER PURPOSES WHATSOEVER.	<b>NOTES:</b> 1. REMOVE ALL SHARP CORNERS & EDGES. 2. UNLESS OTHERWISE SPECIFIED, SURFACE FINISH TO BE 125 RMS. 3. WELDING MEDIUM SHALL CONFORM TO AWS SPECIFICATIONS TO E-70XX ELECTRODES OR E-70TI CODE 5.3 FLUX CORE WIRE ONLY.	<b>TOLERANCES:</b> ANGULAR ± 1° FRACTIONAL ± .030 DECIMAL 0.XX ± .030 0.XXX ± .005	P-1310	SCALE	DRAWN <i>dak</i>	<b>MOHAWK RESOURCES LTD.</b>	
				CHECKED	APPROVED	TITLE <i>PIT DRAWINGS &amp; SECTIONS FOR 75-26-F (FLUSH)</i>	
			FILE NAME P-1310-D-001	DATE 12/2/09	WEIGHT LB.	FROM NEXT ASSEMBLY	DRAWING NUMBER P-1310-D-001

LIFT DATA TABLE

MOHAWK RESOURCES, LTD  
PARALLELOGRAM LIFT MODEL  
75-26-FLUSH

LIFT UNIT DATA	--
MAXIMUM LOAD CAPACITY (LBS)	75,000
ANCHORAGE	--
ANCHOR BOLT DIAMETER (IN.)	3/4"
TOTAL NUMBER OF ANCHOR BOLTS	56
BOLT PATTERN	SEE ANCHOR DETAILS
ANCHOR BOLT SETTING TORQUE	N/A- SEE ANCHOR DETAILS
MINIMUM EMBEDMENT LENGTH (IN.)	3.00
MINIMUM CONCRETE THICKNESS (IN.)	SEE PIT DRAWINGS
HYDRAULIC	--
RESERVOIR CAPACITY (GAL)	30 TOTAL
OIL TYPE	DEXRON III (ATF)
ELECTRICAL	--
MOTOR HORSEPOWER	20
208/230 V 3 PH	60 AMPERE
or 460 V 3 PH	30 AMPERE
CONTROL CIRCUIT TRANSFORMER 1000 VA	7.69 AMP
24 VDC POWER SUPPLY	4.8 AMP
LIGHT FIXTURES (OPTIONAL LIGHTING KIT) QTY	6
SHOP AIR	--
AIR PRESSURE (PSI)	85 to 100
AIR VOLUME- LIFT (CFM)(LOCKS)	5
AIR VOLUME- OPTIONAL ROLLING JACK (CFM)	25 EACH
AIR VOLUME- OPTIONAL SHOP AIR KIT (CFM)	20
AIR VOLUME- TOTAL REQ'D CAPACITY (CFM)	30 MINIMUM
AIR VOLUME- TOTAL REQ'D CAPACITY (CFM)	50 SUGGESTED

REQUIRED MATERIAL LIST

MATERIALS SHOWN ON THIS LIST SHALL BE USED WITHOUT  
SUBSTITUTION UNLESS SPECIFICALLY APPROVED IN WRITING BY  
MOHAWK RESOURCES, LTD.

12	1	LOCKOUT/TAGOUT DISCONNECT BOX	PER LOCAL ELECTRICAL CODES
11*	AR	LEVELING SHIMS	1/16", 1/8", 1/4" THICK
10*	48	3/4" x 5" ANCHOR BOLT ASSEMBLY	WEJ-IT - WEDGE ANCHORS
9	4	1" SEAL BARRIER	CROUSE - HINDS EYS3
8	4	1-3/4" REDUCER BUSHING	CROUSE - HINDS RE32
7	4	1" SCH 40-90 DEG ELBOW	CROUSE - HINDS EL3
6*	1	JUNCTION BOX (IN CONSOLE)	STEEL
5	AR	SEALTITE FLEXIBLE CONDUIT	METAL CORE
4	AR	1" RIGID CONDUIT	STEEL
3	1	FILTER/LUBRICATOR/REGULATOR, DRYER SHUTOFF	
2	AR	4" SCH 40 STREET ELBOW	STEEL or PVC
1	AR	4" SCH 40 PIPE	STEEL or PVC
ITEM	QTY	DESCRIPTION	MATERIAL
		* ITEMS SUPPLIED BY MOHAWK WITH THE LIFT UNIT	

NOTICE OF CONFIDENTIAL INFORMATION

INFORMATION CONTAINED HEREIN IS CONFIDENTIAL AND PROPERTY OF MOHAWK RESOURCES LTD.. WHERE DRAWING IS FURNISHED TO OTHERS IT SHALL BE USED SOLELY FOR PURPOSES OF INSPECTION, INSTALLATION, OR MAINTENANCE. THE INFORMATION SHALL NOT BE USED OR DISCLOSED BY THE RECIPIENT FOR ANY OTHER PURPOSES WHATSOEVER.

NOTES:

- REMOVE ALL SHARP CORNERS & EDGES.
- UNLESS OTHERWISE SPECIFIED, SURFACE FINISH TO BE 125 RMS.
- WELDING MEDIUM SHALL CONFORM TO AWS SPECIFICATIONS TO E-70XX ELECTRODES OR E-70TI CODE 5.3 FLUX CORE WIRE ONLY.

TOLERANCES:  
ANGULAR ± 1°  
FRACTIONAL ± .030  
DECIMAL:  
0.XXX ± .030  
0.XXX ± .005

FILE NAME  
P-1310-D-002

P-1310-

NEXT ASSEMBLY

SCALE

DRAWN  
dak

MOHAWK RESOURCES LTD.

CHECKED

APPROVED

TITLE 75-26-F (Flush)  
LIFT DATA TABLE

DATE  
12/09

WEIGHT  
LB.

FROM

DRAWING NUMBER  
P-1310-D-002



GENERAL NOTES

NOTE 1  
CONCRETE USED FOR THE BASE AND THE SIDE WALLS OF EACH TRENCH AND ANY OTHER NEW CONCRETE WHICH IS USED FOR THIS INSTALLATION MAY HAVE A MINIMUM STRENGTH OF  $F'c=2,500$  psi, A STRENGTH OF  $F'c=4,000$  psi IS RECOMMENDED WHERE POSSIBLE.

NOTE 2  
CONCRETE USED FOR THE BASE AND SIDEWALLS OF THE TRENCH AREAS SHALL REACH ITS FULL 28 DAY  $F'c$  STRENGTH BEFORE THE LIFT AND THE ANCHOR BOLTS ARE INSTALLED.

NOTE 3  
CONCRETE REINFORCEMENT SIZES AND REINFORCEMENT SPECIFICATION FOR THE BASE OF EACH TRENCH SHALL BE DETERMINED BY AN ENGINEER OR ARCHITECT (AT THE EXPENSE OF THE PURCHASER) AND SHOULD BE DETERMINED CONSIDERING THE LOCAL SOIL CONDITIONS AND THE APPLIED LOADING. AS A MINIMUM, GRADE 60 REINFORCEMENT OF THE SIZE AND SPACING SHOWN ON THE DRAWINGS SHALL BE USED.

NOTE 4  
CONCRETE REINFORCEMENT SPECIFICATIONS FOR THE FLOOR AREA AROUND THE TRENCHES SHALL BE DETERMINED BY AN ENGINEER OR ARCHITECT (AT THE EXPENSE OF THE PURCHASER) AND SHOULD BE DETERMINED CONSIDERING THE LOCAL SOIL CONDITIONS AND THE APPLIED LOADING. AS A MINIMUM, TWO LAYERS OF GRADE 60, 6X6-10/10 WELDED WIRE FABRIC SHOULD BE USED IN THE VICINITY OF THE LIFT UNIT AND BETWEEN THE TRENCHES.

NOTE 5  
THE REINFORCING STEEL USED IN THE BASE OF THE TRENCHES SHALL BE INSTALLED SO AS TO NOT INTERFERE WITH THE ANCHOR BOLTS USED TO ATTACH THE LIFT UNIT.

NOTE 6  
WEJ-IT FASTENING SYSTEMS, AT WEDGE ANCHORS ARE PROVIDED WITH THE LIFT FOR ANCHORING THE LIFT UNIT TO THE FLOOR SYSTEM. THE NUMBER AND THE SIZE OF ANCHOR BOLTS SPECIFIED IN THE DRAWING MUST BE USED TO ATTACH THE LIFT UNIT. ANCHOR BOLTS OF FULL LENGTH MUST BE USED IN ALL LOCATIONS PROVIDED ON THE BASE OF THE LIFT UNIT.

NOTE 7  
CARE MUST BE TAKEN TO ENSURE THAT THE SIDE WALLS OF THE TRENCH ARE PARALLEL AND STRAIGHT. APPROXIMATELY 1 1/2 OF CLEARANCE IS PROVIDED ALONG THE SIDES OF THE RUNWAYS.

NOTE 8  
SLOPE THE BOTTOM OF THE TRENCH 1/16 INCH PER FOOT TOWARD THE DRAINAGE CHANNEL. SLOPE THE DRAINAGE CHANNEL 1/16 INCH PER FOOT TOWARD THE CATCH BASIN.

NOTE 9  
CARE MUST BE TAKEN TO ENSURE THAT THE BASE OF THE TRENCH AREAS ARE AT THE PROPER ELEVATION. A MAXIMUM OF ONE INCH ADJUSTMENT (SHIMMING) IS PERMITTED FOR INSTALLATION LEVELING.

NOTE 10  
WHERE MORE THAN 3/4 INCH OF SHIM LEVELING IS REQUIRED, FULL SUPPORT PLATE CONTACT SHIMS ARE AVAILABLE AT ADDITIONAL COST. THE FULL CONTACT SHIM PLATES SHALL THEN BE ACCURATELY LEVELED USING INDIVIDUAL ANCHOR BOLT SHIMS. INDIVIDUAL ANCHOR BOLT SHIMS ARE AVAILABLE IN A RANGE OF THICKNESSES FROM 1/16 INCH TO 1/4 INCH.

NOTE 11  
NO EMBEDDED PLUMBING, TUBES, CONDUITS OR OTHER ITEMS, EXCEPT THE LIFT UNIT SERVICE LEG CONDUITS SHALL BE CLOSER THAN 16 INCHES FROM ANY ANCHOR BOLT. ALSO, THE SERVICE LEG CONDUITS SHALL BE INSTALLED ACCURATELY IN THE LOCATIONS SHOWN IN THE PLAN AND DETAIL VIEWS TO MINIMIZE THE EFFECT ON THE ANCHORAGE.

NOTE 12  
PROVIDE TWO, 4 INCH SCH 40 PVC PIPE AS A HYDRAULIC-PNEUMATIC SERVICE SUPPLY CONDUIT RUNNING FROM THE POWER UNIT TO EACH SERVICE LEG.

NOTE 13  
PROVIDE 4, 1 INCH SCH 40 STEEL CONDUITS AS ELECTRICAL SERVICE SUPPLY RUNNING FROM THE POWER UNIT TO THE SERVICE LEGS. THESE CONDUITS SHALL BE INSTALLED AS SHOWN ON THE SECTION VIEWS AND MUST BE INSTALLED ACCORDING TO APPLICABLE ELECTRICAL CODES.

NOTE 14  
ONE 4 INCH SCH 40 PVC DRAIN PIPE SHOULD BE PROVIDED TO CARRY DRAINAGE FROM THE CATCH BASINS TO AN OIL-WATER SEPARATOR. THIS PIPE SHOULD SLOPE A MINIMUM OF 1/16 INCH PER FOOT TOWARD THE DESTINATION.

NOTE 15  
PROVIDE TEMPORARY CAPS FOR ALL CONDUITS AND EMBEDDED PIPES. IT IS RECOMMENDED TO LEAVE PULL ROPES IN CONDUITS FOR EASE OF LIFT INSTALLATION.

NOTE 16  
THE CONTROL CONSOLE MUST BE LOCATED IN THE VICINITY OF THE LIFT. IT SHOULD BE PLACED FAR ENOUGH AWAY FROM THE LIFT TO ALLOW FOR ACTIVITIES AROUND THE LIFT. THE ENCLOSED DRAWINGS SHOW THE CONSOLE IN A STANDARD POSITION. THE CONTROL CONSOLE MAY BE LOCATED ON EITHER SIDE AND ANYWHERE ALONG THE LENGTH OF THE LIFT, BUT ANY DEVIATIONS FROM THE ENCLOSED DRAWINGS MAY REQUIRE LONGER CABLES, HOSES, CONDUIT, ETC. AT ADDITIONAL EXPENSE TO THE PURCHASER.

NOTE 17  
THE LIFT UNIT REQUIRES CLEAN DRY COMPRESSED AIR AT THE PRESSURE AND VOLUME SHOWN ON THE LIFT UNIT DATA TABLE. A FILTER/LUBRICATOR/REGULATOR IS SUPPLIED WITH THE LIFT UNIT FOR THE LOCKING SYSTEM ONLY. A FILTER/LUBRICATOR/REGULATOR, AIR DRYER AND SHUTOFF VALVE MUST BE PROVIDED FOR THE LIFT UNIT TO OPERATE THE OPTIONAL ACCESSORIES. THE REQUIRED VOLUME OF AIR SHOWN IN THE LIFT UNIT DATA TABLE RECOGNIZES THAT NOT MORE THAN ONE AUXILIARY AIR CONSUMER WILL BE USED SIMULTANEOUSLY.

NOTE 18  
PROVIDE ONE, 1 INCH SCH 40 RIGID STEEL CONDUIT AS A COMPRESSED AIR SUPPLY. THIS CONDUIT IS SHOWN UNDERGROUND, ALTERNATIVELY IT MAY BE BROUGHT TO THE CONTROL PANEL OVERHEAD DEPENDING ON CUSTOMER PREFERENCE. IF BROUGHT OVERHEAD, PROVIDE FLEX CONDUIT CONNECTING THE TERMINAL END OF THE CONDUIT TO THE CONTROL CONSOLE.

NOTE 19  
THE LIFT UNIT REQUIRES A HIGH VOLTAGE POWER SOURCE. A LOCKOUT/TAGOUT ELECTRICAL DISCONNECT BOX MUST BE PROVIDED FOR THE POWER SOURCE. THE LOCKOUT/TAGOUT DISCONNECT BOX MUST BE INSTALLED ACCORDING TO APPLICABLE ELECTRICAL CODES. THIS ELECTRICAL DISCONNECT IS TO BE PROVIDED BY OTHERS.

NOTE 20  
PROVIDE ONE, 1 INCH SCH 40 RIGID STEEL CONDUIT AS ELECTRICAL SERVICE SUPPLY RUNNING FROM THE BUILDING POWER SOURCE TO THE CONTROL CONSOLE. THIS CONDUIT IS SHOWN UNDERGROUND, ALTERNATIVELY IT MAY BE BROUGHT TO THE CONTROL PANEL OVERHEAD DEPENDING ON CUSTOMER PREFERENCE. PROVIDE A LOCKOUT/TAGOUT ELECTRICAL DISCONNECT BOX WITHIN SIGHT AND AS CLOSE TO THE CONTROL CONSOLE AS IS PRACTICAL. THIS ELECTRICAL SUPPLY CONDUIT AND DISCONNECT BOX MUST BE INSTALLED ACCORDING TO LOCAL ELECTRICAL CODE REQUIREMENTS.

NOTE 21  
ALL FLOOR REQUIREMENTS ARE BASED ON A CONCRETE SLAB THAT IS ON GRADE (SUPPORTED BY SOIL). ANY OTHER TYPE OF INSTALLATION INVOLVING A SLAB NOT ON GRADE (I.E.-SLAB SUPPORTED BY PYLONS, SECOND STORY SLAB, ETC.) MUST BE REVIEWED & ANALYZED FOR SUITABILITY BY THE BUILDING ARCHITECT, AT THE EXPENSE OF OTHERS.

FLUSH LIFTS ONLY

D-SIZE

<p><b>NOTICE OF CONFIDENTIAL INFORMATION</b></p> <p>INFORMATION CONTAINED HEREIN IS CONFIDENTIAL AND PROPERTY OF MOHAWK RESOURCES LTD.. WHERE DRAWING IS FURNISHED TO OTHERS IT SHALL BE USED SOLELY FOR PURPOSES OF INSPECTION, INSTALLATION, OR MAINTENANCE. THE INFORMATION SHALL NOT BE USED OR DISCLOSED BY THE RECIPIENT FOR ANY OTHER PURPOSES WHATSOEVER.</p>	<p>NOTES:</p> <ol style="list-style-type: none"> <li>REMOVE ALL SHARP CORNERS &amp; EDGES.</li> <li>UNLESS OTHERWISE SPECIFIED, SURFACE FINISH TO BE 125 RMS.</li> <li>WELDING MEDIUM SHALL CONFORM TO AWS SPECIFICATIONS TO E-70XX ELECTRODES OR E-70TI CODE 5.3 FLUX CORE WIRE ONLY.</li> </ol>	<p>TOLERANCES:</p> <p>ANGULAR ± 1°</p> <p>FRACTIONAL ± .030</p> <p>DECIMAL ± .030</p> <p>0.XXX ± .005</p>	P-1010-A-001	SCALE	DRAWN rwv7089	<b>MOHAWK RESOURCES LTD.</b>	
				CHECKED	APPROVED	TITLE FLUSH INSTALLATION GENERAL NOTES	
		FILE NAME P-1010-D-006	NEXT ASSEMBLY	DATE 5/03	WEIGHT LB.	FROM	DRAWING NUMBER P-1010-D-006