

MOHAWK

MADE IN THE USA



Air Line Kit Option for TR-33, TR-35, TR-50 & TR-75

FOR 30' TRACKS DRAWING PACKAGE

- ☒ INSTALLATION
- ☒ PARTS

MOHAWK RESOURCES LTD.

65 VROOMAN AVE., PO BOX 110
AMSTERDAM, NY 12010

TOLL FREE: 1-800-833-2006

LOCAL: 1-518-842-1431

FAX: 1-518-842-1289

INTERNET: WWW.MOHAWKLIFTS.COM

E-MAIL: SERVICE@MOHAWKLIFTS.COM

Air Line Kit 1-2008.doc

Rev Date 1/28/2008

**READ MANUAL
THOROUGHLY BEFORE
INSTALLING,
OPERATING OR SERVICING
THIS LIFT !!**

**Deliver these instructions to lift
owner/user/employer along with
other instructional materials
furnished with this lift.**

AIR LINE KIT DRAWING PACKAGE :

FOR: MOHAWK MODELS TR-33, TR-35, TR-50 & TR-75

WITH **30 FT TRACKS**

DRAWINGS INCLUDE:

AIR LINE ASSY DRAWINGS:

050-011-057 – Air Supply Option Diagram Assy, 30'

PACKING DRAWINGS:

MAN6210 – Air Supply Option Packing

MAN6211 – Parts Bag #1

MAN6212 – Parts Bag #2

MAN6213 – Parts Bag #3

MAN6214 – Parts Bag #4

MAN6215 – Parts Bag #5

MAN6216 – Parts Bag #6

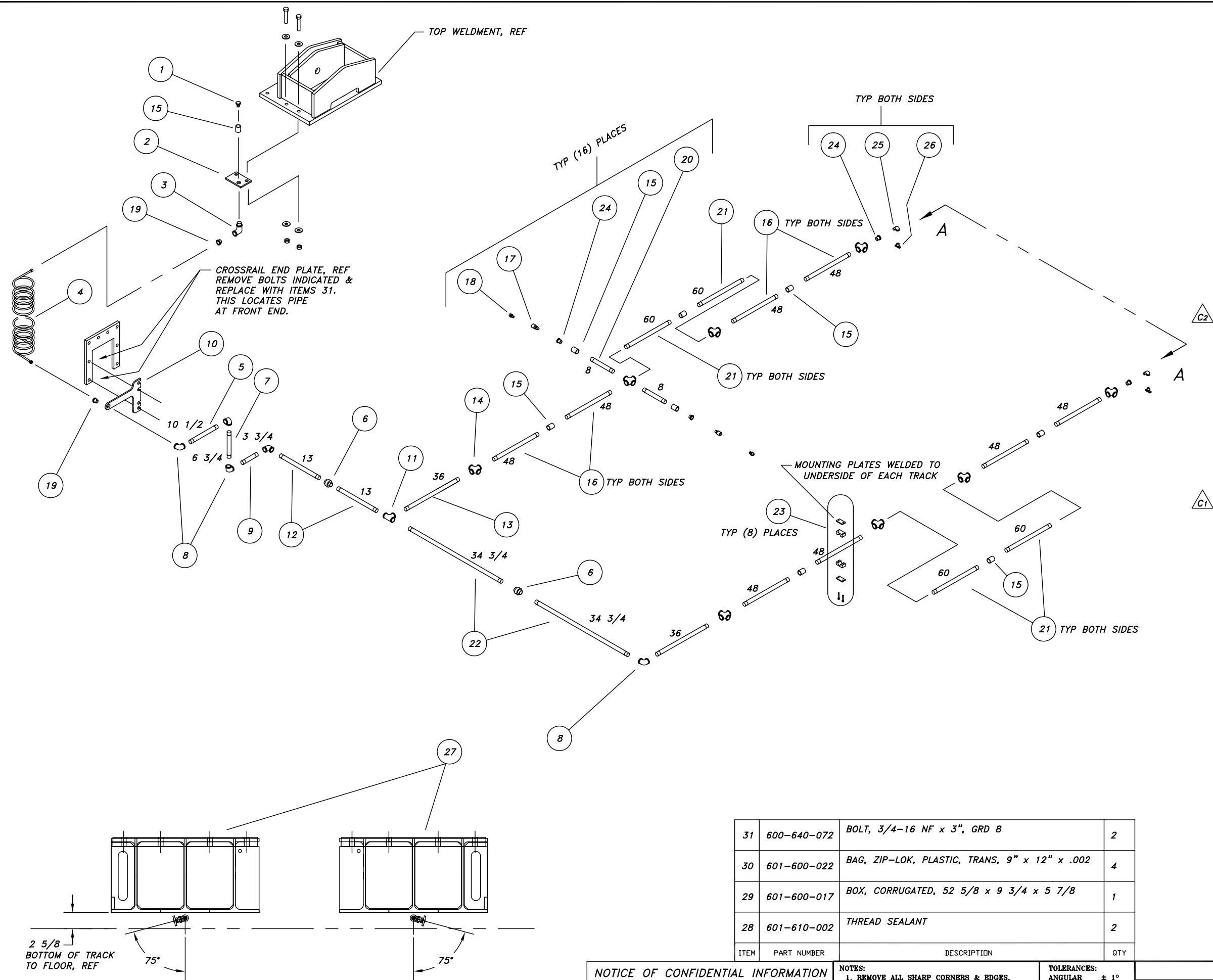
MAN6217 – Parts Bag #7

MAN6218 – Parts Bag #8

MAN6219 – Parts Bag #9

MAN6220 – Parts Bag #10

REV.	DESCRIPTION	DATE	BY	APP'D.
<div>C</div>	1) ITEM 15 QTY WAS 21 2) ITEM 21 QTY WAS 2	11/00	dak	



27	050-011-047	TRACK WELDMENT SUB-ASS'Y (30')	REF
26	601-450-030	DRAIN COCK, BRASS (RADIATOR)	2
25	601-530-005	PIPE FITTING, 90° STREET ELBOW, 3/8"	2
24	601-530-015	PIPE FITTING, HEX BUSHING, 3/4" x 3/8"	18
23	601-450-029	PIPE SUPPORT BLOCK, 3/4"	8
22	050-011-125	PIPE, 3/4" x 34 3/4"	2
21	601-530-022	PIPE, 3/4" x 60"	4
20	601-530-018	PIPE NIPPLE, 3/4" x 8"	16
19	601-530-014	PIPE FITTING, HEX BUSHING, 3/4" x 1/2"	2
18	601-530-002	MALE PLUG, 3/8 CONNECTION	16
17	601-530-001	COUPLER SLEEVE, MALE, 3/8"	16
16	601-530-021	PIPE, 3/4" x 48"	8
15	601-530-009	PIPE FITTING, COUPLING, 3/4"	23
14	601-530-007	PIPE FITTING, CROSS, 3/4"	8
13	601-530-020	PIPE, 3/4" x 36"	2
12	050-011-126	PIPE, 3/4" x 13"	2
11	601-530-006	PIPE FITTING, TEE, 3/4"	1
10	050-011-123	AIR LINE KIT BRACKET, 3/8 x 10 1/8 x 13"	1
9	050-011-127	PIPE , 3/4" x 3 3/4	1
8	601-530-004	PIPE FITTING, 90° ELBOW, 3/4"	5
7	050-011-128	PIPE, 3/4" x 6 3/4	1
6	601-530-010	UNION, 3/4"	2
5	050-011-129	PIPE, 3/4" x 10 1/2	1
4	601-430-041	NYLON COIL AIR HOSE, YELLOW	1
3	601-530-039	ELBOW, 90°, STREET, 3/4 NPT, STD GALV #150	1
2	050-011-124	TOP AIR LINE KIT BRACKET, 3/8 x 4" x 5 3/4	1
1	601-420-073	PLUG, 3/4 PIPE	1
ITEM	PART NUMBER	DESCRIPTION	QTY

31	600-640-072	BOLT, 3/4-16 NF x 3", GRD 8	2
30	601-600-022	BAG, ZIP-LOK, PLASTIC, TRANS, 9" x 12" x .002	4
29	601-600-017	BOX, CORRUGATED, 52 5/8 x 9 3/4 x 5 7/8	1
28	601-610-002	THREAD SEALANT	2
ITEM	PART NUMBER	DESCRIPTION	QTY

NOTICE OF CONFIDENTIAL INFORMATION

INFORMATION CONTAINED HEREIN IS CONFIDENTIAL AND PROPERTY OF MOHAWK RESOURCES LTD., WHERE DRAWING IS FURNISHED TO OTHERS IT SHALL BE USED SOLELY FOR PURPOSES OF INSPECTION, INSTALLATION, OR MAINTENANCE. THE INFORMATION SHALL NOT BE USED OR DISCLOSED BY THE RECIPIENT FOR ANY OTHER PURPOSES WHATSOEVER.

NOTES:

- REMOVE ALL SHARP CORNERS & EDGES.
- UNLESS OTHERWISE SPECIFIED, SURFACE FINISH TO BE 125 RMS.
- WELDING MEDIUM SHALL CONFORM TO AWS SPECIFICATIONS TO E-70XX ELECTRODES OR E-70TI CODE 5.3 FLUX CORE WIRE ONLY.

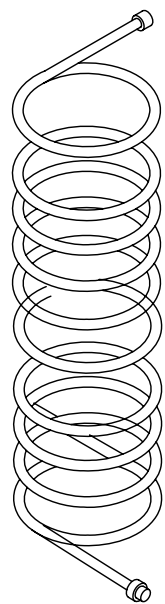
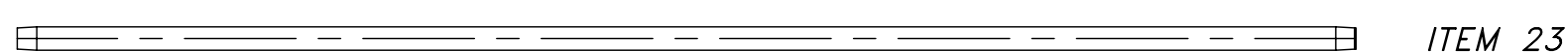
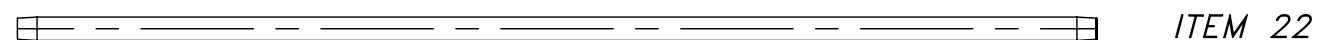
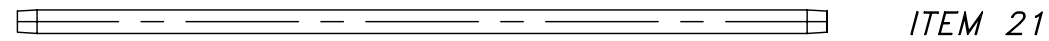
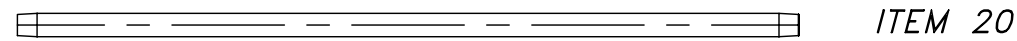
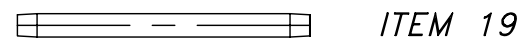
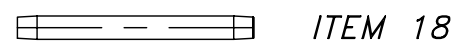
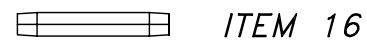
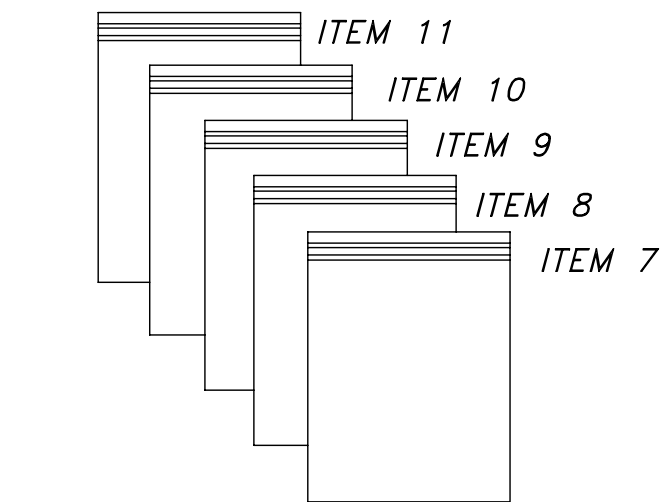
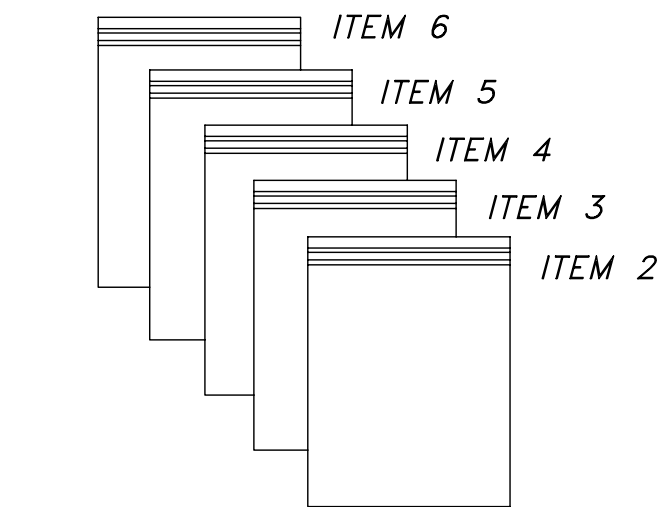
TOLERANCES:
ANGULAR: ± 1°
FRACTIONAL: ± .030
DECIMAL: 0.XX ± .030
0.XXX ± .005

FILE NAME
111057

		SCALE N/A	DRAWN dak	MOHAWK RESOURCES LTD.	
075-010-099		CHECKED RV	APPROVED	TITLE (30' TRACKS) (1998) AIR SUPPLY OPTION DIAGRAM ASS'Y	
035-010-099	050-010-099	DATE 10/98	WEIGHT N/A LB.	FROM	DRAWING NUMBER 050-011-057
NEXT ASSEMBLY					

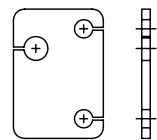
D-SIZE

VIEW A-A

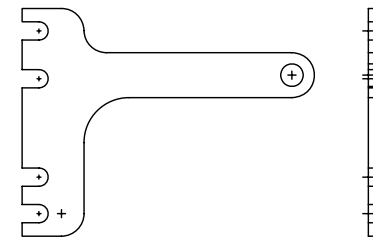


ITEM 12

FOR 30' TRACKS



ITEM 13



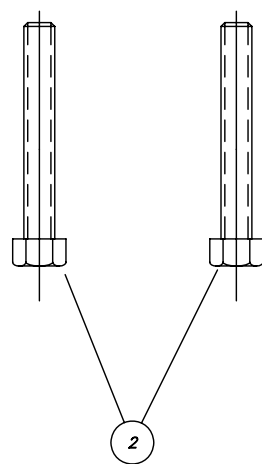
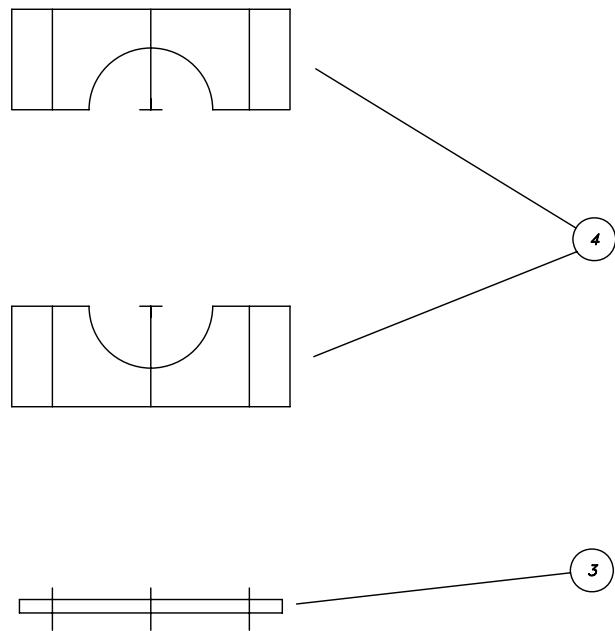
ITEM 14

23	601-530-022	PIPE, 3/4 x 60"	2
22	601-530-021	PIPE, 3/4 x 48"	8
21	601-530-020	PIPE, 3/4 x 36"	4
20	050-011-125	PIPE, 3/4 x 34 3/4	2
19	050-011-126	PIPE, 3/4 x 13"	2
18	050-011-129	PIPE, 3/4 x 10 1/2	1
17	601-530-018	PIPE, 3/4 x 8"	16
16	050-011-128	PIPE, 3/4 x 6 3/4	1
15	050-011-127	PIPE, 3/4 x 3 3/4	1
14	050-011-123	AIR LINE KIT BRACKET, 3/8 x 10 1/8 x 13"	1
13	050-011-124	TOP AIR LINE KIT BRACKET, 3/8 x 4" x 5 3/4	1
12	601-430-041	NYLON COIL AIR HOSE, YELLOW	1
11	MAN6220	BAG #10	1
10	MAN6219	BAG #9	1
9	MAN6218	BAG #8	1
8	MAN6217	BAG #7	1
7	MAN6216	BAG #6	1
6	MAN6215	BAG #5	1
5	MAN6214	BAG #4	1
4	MAN6213	BAG #3	1
3	MAN6212	BAG #2	1
2	MAN6211	BAG #1	1
1	601-600-017	BOX, CORRUGATED, 52 5/8 x 9 3/4 x 5 7/8	1
ITEM	PART NUMBER	DESCRIPTION	QTY

AIR SUPPLY OPTION PACKING

FILE: MAN6210
DATE: 7/99

MAN6211



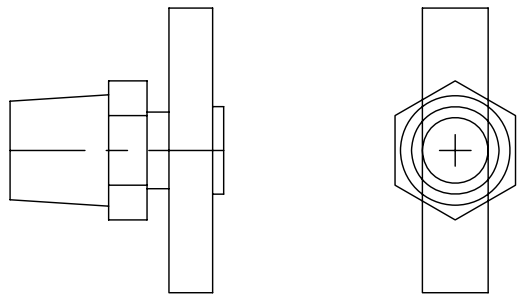
FOR 30' TRACKS

4	601-450-029-3	PLASTIC BLOCKS	16
3	601-450-029-2	PLATES, 1 3/16 x 2 1/8	8
2	601-450-029-1	BOLTS, 1/4-20 x 1 3/4 LG	16
1	601-600-022	BAG, PLASTIC, ZIP-LOK, 9" x 12"	1
ITEM	PART NUMBER	DESCRIPTION	QTY

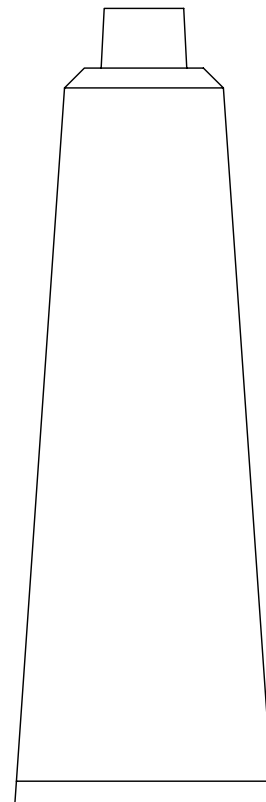
PARTS BAG #1

FILE: MAN6211
DATE: 7/99

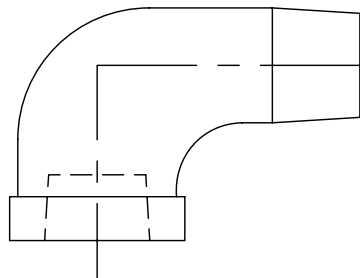
MAN6212



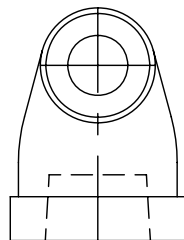
ITEM 2



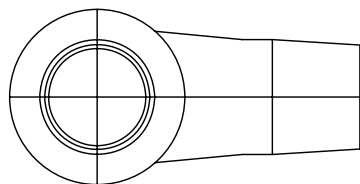
ITEM 4



ITEM 3



FOR 30' TRACKS

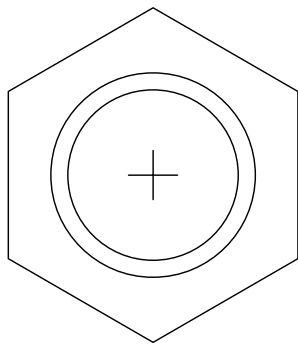
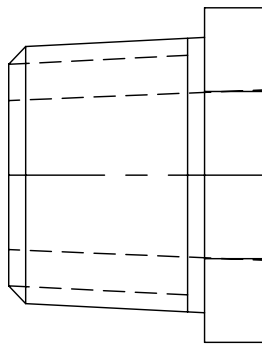
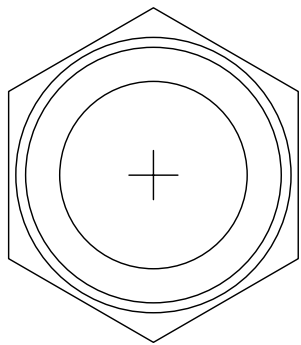


4	601-610-002	THREAD SEALANT	2
3	601-530-005	PIPE FITTING, 90° STREET ELBOW, 3/8"	2
2	601-450-030	DRAIN COCK, BRASS (RADIATOR)	2
1	601-600-022	BAG, PLASTIC, ZIP-LOK, 9" x 12"	1
ITEM	PART NUMBER	DESCRIPTION	QTY

PARTS BAG #2

FILE: MAN6212
DATE: 7/99

MAN6213



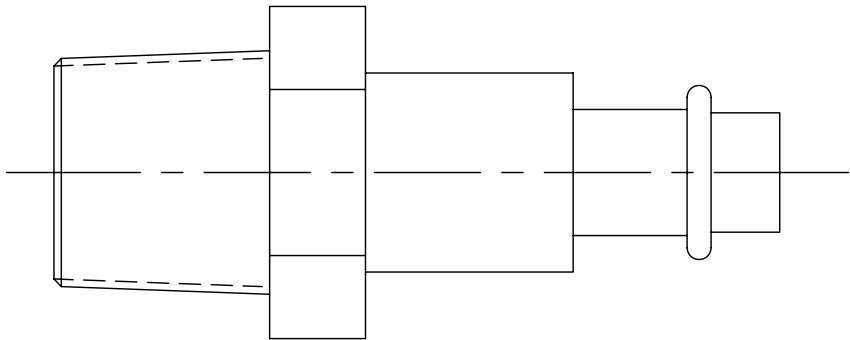
ITEM 2

FOR 30' TRACKS

2	601-530-015	PIPE FITTING, HEX BUSHING, 3/4" x 3/8"	18
1	601-600-022	BAG, PLASTIC, ZIP-LOK, 9" x 12"	1
ITEM	PART NUMBER	DESCRIPTION	QTY

PARTS BAG #3
FILE: MAN6213
DATE: 7/99

MAN6214



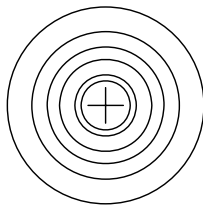
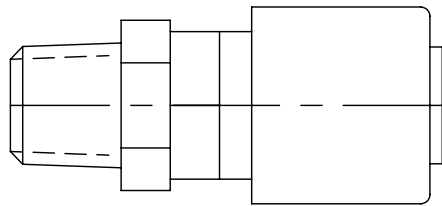
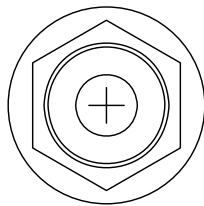
ITEM 2

FOR 30' TRACKS

2	601-530-002	MALE PLUG, 3/8 CONNECTION	16
1	601-600-022	BAG, PLASTIC, ZIP-LOK, 9" x 12"	1
ITEM	PART NUMBER	DESCRIPTION	QTY

PARTS BAG #4
FILE: MAN6214
DATE: 7/99

MAN6215



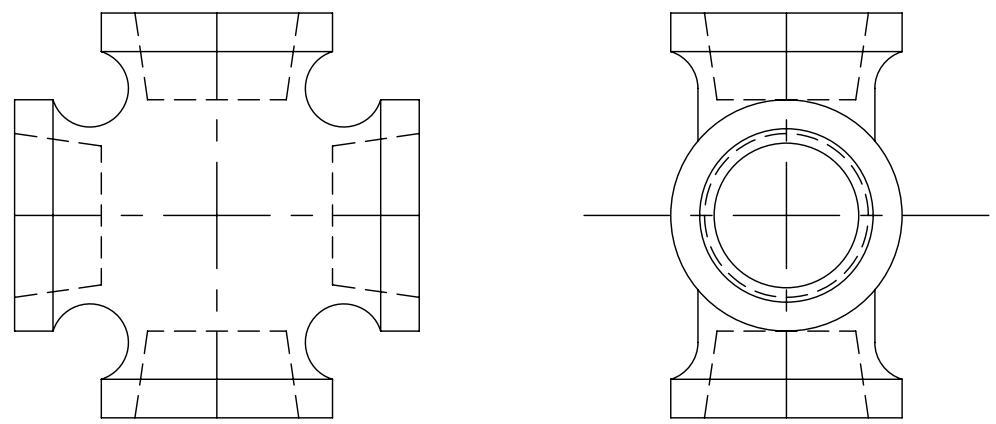
ITEM 2

FOR 30' TRACKS

2	601-530-001	COUPLER SLEEVE, MALE 3/8"	16
1	601-600-022	BAG, PLASTIC, ZIP-LOK, 9" x 12"	1
ITEM	PART NUMBER	DESCRIPTION	QTY

PARTS BAG #5
FILE: MAN6215
DATE: 7/99

MAN6216



ITEM 2

FOR 30' TRACKS

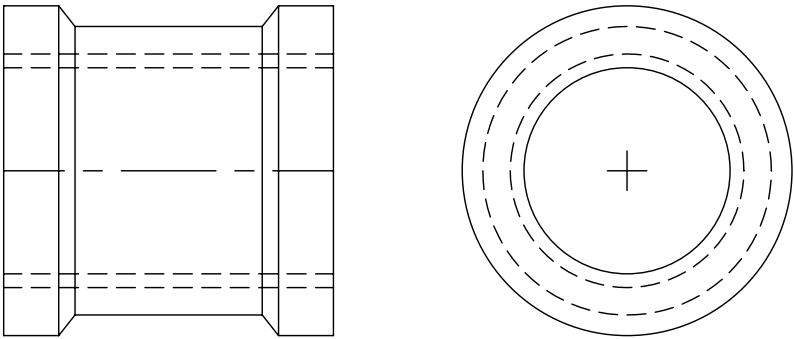
2	601-530-007	PIPE FITTING, CROSS, 3/4"	8
1	601-600-022	BAG, PLASTIC, ZIP-LOK, 9" x 12"	1
ITEM	PART NUMBER	DESCRIPTION	QTY

PARTS BAG #6

FILE: MAN6216
DATE: 7/99

MAN6217

REV-A 11/00



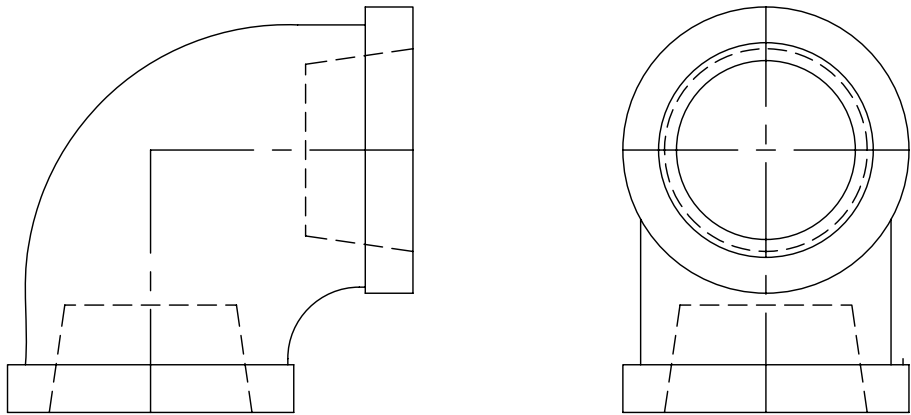
ITEM 2

FOR 30' TRACKS

2	601-530-009	PIPE FITTING, COUPLING, 3/4"	23
1	601-600-022	BAG, PLASTIC, ZIP-LOK, 9" x 12"	1
ITEM	PART NUMBER	DESCRIPTION	QTY

PARTS BAG #7
FILE: MAN6217
DATE: 7/99

MAN6218

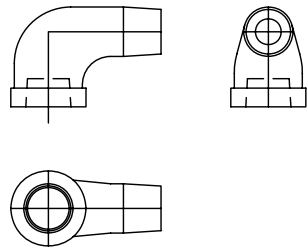


ITEM 2

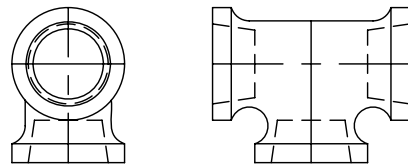
FOR 30' TRACKS

2	601-530-004	PIPE FITTING, 90° ELBOW, 3/4"	5
1	601-600-022	BAG, PLASTIC, ZIP-LOK, 9" x 12"	1
ITEM	PART NUMBER	DESCRIPTION	QTY

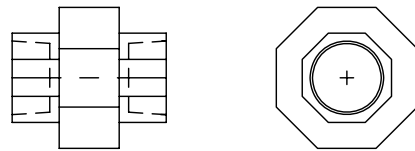
PARTS BAG #8
FILE: MAN6218
DATE: 7/99



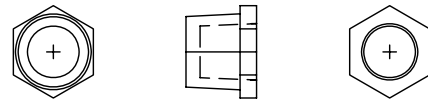
ITEM 2



ITEM 5



ITEM 3



ITEM 4

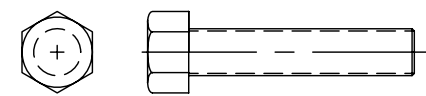
MAN6219

FOR 30' TRACKS

5	601-530-006	PIPE FITTING, TEE, 3/4"	1
4	601-530-014	PIPE FITTING, HEZ BUSHING, 3/4" x 1/2"	2
3	601-530-010	UNION, 3/4"	2
2	601-530-039	PIPE FITTING, 90° STREET, 3/4"	1
1	601-600-022	BAG, PLASTIC, ZIP-LOK, 9" x 12"	1
ITEM	PART NUMBER	DESCRIPTION	QTY

PARTS BAG #9
FILE: MAN6219
DATE: 7/99

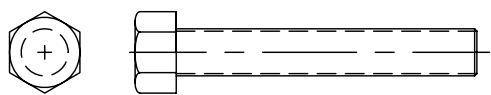
MAN6220



ITEM 2

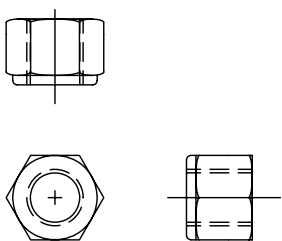


ITEM 5



ITEM 3

FOR 30' TRACKS



ITEM 4

5	600-690-012	NUT, LOCK, 5/8-11 NC	2
4	600-690-003	NUT, LOCK, 3/4-16 NF	2
3	600-640-074	BOLT, 5/8-11 NC x 4", GRADE 8, HEX HEAD CAP	2
2	600-640-072	BOLT, 3/4-16 NF x 3", GRADE 8, HEX HEAD CAP	2
1	601-600-022	BAG, PLASTIC, ZIP-LOK, 9" x 12"	1
ITEM	PART NUMBER	DESCRIPTION	QTY

PARTS BAG #10
FILE: MAN6220
DATE: 7/99