

MOHAWK

MADE IN THE USA



JS-Series Jack Stand

JS-4775-24 - 24,000 LB. CAPACITY -
JS-3047-24 - 24,000 LB. CAPACITY -
JS-1830-24 - 24,000 LB. CAPACITY -
JS-4775-18 - 18,000 LB. CAPACITY -
JS-3047-18 - 18,000 LB. CAPACITY -
JS-1830-18 - 18,000 LB. CAPACITY -

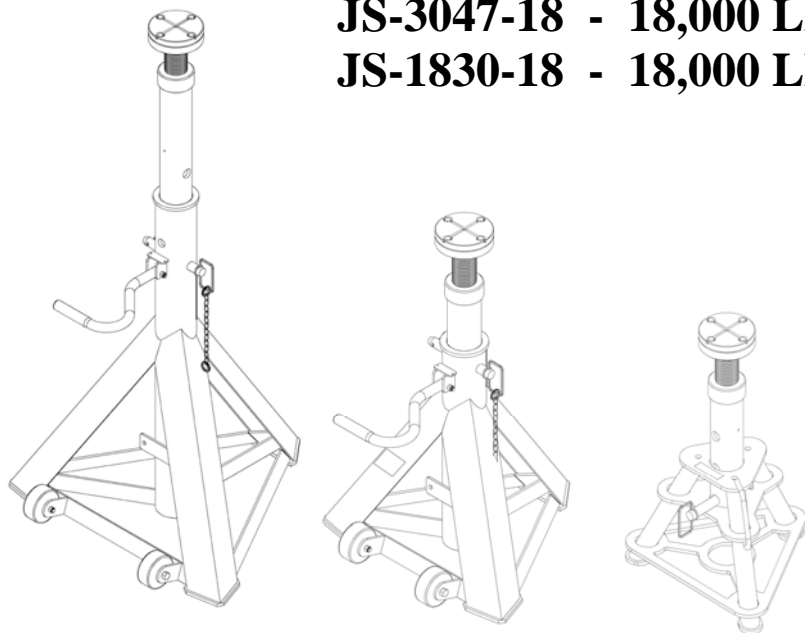


Intertek

81287

Conforms to
ANSI/ASME
PALD-2009

- ☒ OPERATION
- ☒ MAINTENANCE
- ☒ PARTS



MOHAWK RESOURCES LTD.

VROOMAN AVE

PO BOX 110

AMSTERDAM, NY 12010

TOLL FREE: 1-800-833-2006

LOCAL: 1-518-842-1431

FAX: 1-518-842-1289

INTERNET: WWW.MOHAWKLIFTS.COM

E-MAIL: SERVICE@MOHAWKLIFTS.COM

Jack Stands 12-1-2015.doc

Rev Date 12-1-2015

Part #601-800-263

**READ MANUAL
THOROUGHLY BEFORE
INSTALLING,
OPERATING OR SERVICING
THIS LIFT !!**

**Deliver these instructions to lift
owner/user/employer along with
other instructional materials
furnished with this lift.**

MOHAWK WARRANTIES

EFFECTIVE DATE: 12/1/2015*

READ THIS WARRANTY IN ITS ENTIRETY

GENERAL WARRANTY INFORMATION:

MOHAWK'S OBLIGATION UNDER THIS WARRANTY IS LIMITED TO REPAIRING OR REPLACING ANY PART OR PARTS RETURNED TO THIS FACTORY, TRANSPORTATION CHARGES PREPAID BY CUSTOMER WITH AUTHORIZED RETURN (RGA), WHICH PROVE UPON INSPECTION TO BE DEFECTIVE AND WHICH HAVE NOT BEEN MISUSED. DAMAGE OR FAILURE TO ANY PART DUE TO FREIGHT DAMAGE OR LACK OF REQUIRED REGULAR DOCUMENTED MAINTENANCE IS NOT COVERED UNDER THIS WARRANTY. ALL WARRANTY CLAIMS MUST BE PERFORMED IN ACCORDANCE TO MOHAWK'S WARRANTY PARTS RETURN POLICY (CONTACT MOHAWK'S SERVICE DEPARTMENT FOR MORE INFORMATION).

THIS WARRANTY DOES NOT COVER MIS-DIAGNOSING OF UNIT OR PARTS RETURNED THAT ARE NON-DEFECTIVE. THIS WARRANTY DOES NOT COVER ANY CONSEQUENTIAL OR INCIDENTAL DAMAGES INCLUDING, BUT NOT LIMITED TO, LOST REVENUES OR BUSINESS HARM. THIS EQUIPMENT HAS BEEN DESIGNED FOR USE IN NORMAL VEHICLE MAINTENANCE APPLICATIONS. A SPECIFIC INDIVIDUAL WARRANTY MUST BE ISSUED FOR UNITS THAT DEVIATE FROM INTENDED USAGE, SUCH AS HIGH CYCLE USAGE IN INDUSTRIAL APPLICATIONS, OR USAGE IN EXTREMELY ABUSIVE ENVIRONMENTS. MOHAWK RESERVES THE RIGHT TO DECLINE RESPONSIBILITY WHEN REPAIRS OR MODIFICATIONS HAVE BEEN MADE OR ATTEMPTED BY OTHERS WITHOUT WRITTEN AUTHORIZATION FROM MOHAWK RESOURCES LTD.. THIS WARRANTY DOES NOT COVER LABOR OR TRANSPORTATION. THIS WARRANTY DOES NOT COVER DOWNTIME EXPENSES INCURRED WHEN UNIT IS IN REPAIR. **THE LIFT MUST BE REGISTERED WITHIN 30 DAYS OF INSTALLATION BY MAILING SUPPLIED WARRANTY REGISTRATION CARD TO MOHAWK AND MUST BE SIGNED BY A LICENSED ELECTRICIAN.** THE MODEL NUMBER AND SERIAL NUMBER OF THE EQUIPMENT MUST BE FURNISHED WITH ALL WARRANTY CLAIMS. THIS WARRANTY STATEMENT CONTAINS THE ENTIRE AGREEMENT BETWEEN MOHAWK RESOURCES LTD. AND THE PURCHASER UNLESS OTHERWISE SPECIFICALLY EXPRESSED IN WRITING. THIS NON-TRANSFERABLE WARRANTY APPLIES TO THE ORIGINAL PURCHASER ONLY.

THIS WARRANTY DOES NOT COVER NORMAL SURFACE WEAR ITEMS, ITEMS SUBJECT TO ABRASION, OR ITEMS USED IN A CORROSIVE ENVIRONMENT. SOME ITEMS ON LIFT ARE SUBJECT TO NORMAL "WEAR AND TEAR" AND ARE NOT COVERED UNDER THIS WARRANTY.

STRUCTURAL AND MECHANICAL COMPONENTS (ALL LIFTS):

STRUCTURAL AND MECHANICAL COMPONENTS OF THIS UNIT ARE GUARANTEED FOR THE BELOW STATED TIME FRAME, SPECIFIC TO MODEL LISTED, FROM THE DATE OF SHIPMENT FROM FACTORY, AGAINST DEFECTS IN WORKMANSHIP AND/OR MATERIALS WHEN LIFT IS INSTALLED AND USED ACCORDING TO SPECIFICATIONS.

25-YEARS STRUCTURAL / 10 YEARS MECHANICAL: TWO-POST MODELS A-7, SYSTEM IA-10, LC-12, LMF-12, TP-16, TP-18, TP-20, TP-26, TP-30. STRUCTURAL ITEMS COVERED INCLUDE LEG, CARRIAGE, SWING ARM AND SLIDER WELDMENTS (EXCLUDING NORMAL WEAR AREAS AS STATED ABOVE). MECHANICAL ITEMS COVERED INCLUDE ROLLER BEARINGS AND LIFTING CHAIN.

5-YEAR: MODELS TL-7.

3-YEAR: MODELS TR-19, TR-25, FL-25, TR-30, TR-33, TR-35, TR-50, TR-75, TR-110, TR-120, MP-SERIES LIFTS.

2-YEAR: MODELS PARALLELOGRAM SERIES LIFTS.

1-YEAR: MODELS TD-1000, TD-2000, CT-1000, USL-6000.

POWER UNIT (ALL LIFTS):

ALL POWER UNIT COMPONENTS (MOTOR, PUMP AND RESERVOIR) ARE GUARANTEED FOR TWO YEARS FOR PARTS, FROM THE DATE OF SHIPMENT FROM FACTORY, AGAINST DEFECTS IN WORKMANSHIP AND/OR MATERIALS WHEN THE LIFT IS INSTALLED, WIRED BY A LICENSED ELECTRICIAN AND USED ACCORDING TO SPECIFICATIONS.

ELECTRICAL COMPONENTS (ALL LIFTS):

ALL ELECTRICAL COMPONENTS (EXCLUDING MOTOR) ARE GUARANTEED FOR ONE YEAR FOR PARTS, FROM THE DATE OF SHIPMENT FROM FACTORY, AGAINST DEFECTS IN WORKMANSHIP AND/OR MATERIALS WHEN THE LIFT IS INSTALLED AND USED ACCORDING TO SPECIFICATIONS. SEE WARRANTY EXCEPTIONS SECTION FOR BATTERIES.

PNEUMATIC-AIR COMPONENTS (ALL LIFTS):

ALL PNEUMATIC (AIR) COMPONENTS (I.E. AIR CYLINDERS AND POPPET AIR VALVES) ARE GUARANTEED FOR ONE YEAR FOR PARTS, FROM THE DATE OF SHIPMENT FROM FACTORY, AGAINST DEFECTS IN WORKMANSHIP AND/OR MATERIALS WHEN THE LIFT IS INSTALLED AND USED ACCORDING TO SPECIFICATIONS. COMPONENTS IN A PNEUMATIC SYSTEM THAT ARE NOT PROPERLY REGULATED, LUBRICATED AND CONDITIONED WITH AN AIR DRYING SYSTEM ARE NOT COVERED UNDER WARRANTY.

HYDRAULIC COMPONENTS (ALL LIFTS):

EXCLUDING CYLINDERS AND PUMPS (COVERED IN OTHER SECTIONS), ALL HYDRAULIC COMPONENTS (I.E. VALVES AND FITTINGS) ARE GUARANTEED FOR ONE YEAR FOR PARTS, FROM THE DATE OF SHIPMENT FROM FACTORY,

MOHAWK JACK STANDS

AGAINST DEFECTS IN WORKMANSHIP AND/OR MATERIALS WHEN THE LIFT IS INSTALLED AND USED ACCORDING TO SPECIFICATIONS.

HYDRAULIC CYLINDERS (MODEL SPECIFIC LIFTS):

THE FOLLOWING MODELS ARE GUARANTEED FOR 5 YEARS (PARTS ONLY), FROM DATE OF SHIPMENT FROM FACTORY, FOR HYDRAULIC CYLINDERS, AGAINST DEFECTS IN WORKMANSHIP AND/OR MATERIALS WHEN THE LIFT IS INSTALLED AND USED ACCORDING TO SPECIFICATIONS: TWO-POST MODELS A-7, SYSTEM IA-10, LC-12, LMF-12, TP-16, TP-18, TP-20, TP-26, TP-30.

ALL OTHER MODELS ARE GUARANTEED FOR TWO YEARS (PARTS ONLY), FROM THE DATE OF SHIPMENT FROM FACTORY, FOR HYDRAULIC CYLINDERS, AGAINST DEFECTS IN WORKMANSHIP AND/OR MATERIALS WHEN THE LIFT IS INSTALLED AND USED ACCORDING TO SPECIFICATIONS (EXCLUDING USL-6000, WHICH IS ONE YEAR).

THE “*EXTENDED LIFETIME CYLINDER SEAL WARRANTY*” (BELOW) IS APPLICABLE TO THE FOLLOWING MOHAWK LIFTS ONLY: TWO-POST MODELS A-7, SYSTEM IA-10, LC-12, LMF-12, TP-16, TP-18, TP-20, TP-26, TP-30. SEE MOHAWK’S “*EXTENDED LIFETIME CYLINDER SEAL WARRANTY*” FOR SPECIFIC WARRANTY PROVISIONS FOR HYDRAULIC CYLINDERS.

THE “*EXTENDED LIFETIME CYLINDER SEAL WARRANTY*” IS AS FOLLOWS:

AS THE ORIGINAL PURCHASER OF A MOHAWK LIFT MANUFACTURED BY MOHAWK RESOURCES, LTD. YOU ARE ENTITLED TO AN EXTENDED CYLINDER SEAL WARRANTY.

MOHAWK’S OBLIGATION UNDER THIS WARRANTY IS LIMITED TO SUPPLYING MODEL SPECIFIC CYLINDER SEALS. THE CUSTOMER IS RESPONSIBLE FOR SHIPPING AND HANDLING OF THE SEALS. MOHAWK IS NOT RESPONSIBLE/LIABLE FOR THE REBUILD OF CYLINDERS BY OTHERS. THIS WARRANTY IS NON-TRANSFERABLE AND RUNS TO THE ORIGINAL PURCHASER ONLY.

STANDARD OPTIONS (ALL LIFTS):

ALL STANDARD OPTIONS OF THIS UNIT ARE GUARANTEED FOR ONE YEAR FOR PARTS, FROM THE DATE OF SHIPMENT FROM FACTORY, AGAINST DEFECTS IN WORKMANSHIP AND/OR MATERIALS WHEN LIFT IS INSTALLED AND USED ACCORDING TO SPECIFICATIONS.

CUSTOM LIFTS AND CUSTOM OPTIONS:

ALL “CUSTOM” LIFTS AND/OR “CUSTOM” OPTIONS ARE GUARANTEED FOR ONE YEAR FOR PARTS, FROM THE DATE OF SHIPMENT FROM FACTORY, AGAINST DEFECTS IN WORKMANSHIP AND/OR MATERIALS WHEN LIFT IS INSTALLED AND USED ACCORDING TO SPECIFICATIONS.

WARRANTY EXCEPTIONS (ALL LIFTS):

ADJUSTMENTS: THIS WARRANTY DOES NOT COVER CASUAL AND ROUTINE ADJUSTMENTS SUCH AS, BUT NOT LIMITED TO: FITTINGS, SENSORS AND SWITCHES, ANCHOR BOLT RE-TIGHTENING, OR ANY SHIMMING OR ADJUSTMENTS REQUIRED DURING A PROPER AND PROFESSIONAL INSTALLATION BY A QUALIFIED INSTALLER.

MAINTENANCE AND INSPECTIONS: IF THIS UNIT IS NOT MAINTAINED AND INSPECTED IN ACCORDANCE TO THE RELEVANT SECTIONS IN THE USERS MANUAL FOR THIS SPECIFIC MODEL, WARRANTY IS VOID. OSHA, ANSI AND MOHAWK REQUIRE THAT RECORDS MUST BE MAINTAINED TO PROVE THAT INSPECTIONS AND MAINTENANCE OF THIS UNIT HAVE BEEN ROUTINELY PERFORMED BY QUALIFIED INDIVIDUALS.

ABUSE: IF THIS UNIT IS FOUND TO BE OVERLOADED (PURPOSELY OR UNKNOWINGLY), USED IN A SITUATION BEYOND ITS INTENDED FUNCTION, NOT MAINTAINED & INSPECTED REGULARLY, USED IN AN ABUSIVE ENVIRONMENT OR BEYOND NORMAL SHOP USAGE, THIS WARRANTY IS VOID IN ITS ENTIRETY.

NON-EXISTENT PROBLEMS: FOR SERVICE VISITS, PART REPLACEMENTS, LABOR, ETC. FOR PARTS FOUND TO BE NON-DEFECTIVE, OR FOR A UNIT DIS-FUNCTION THAT DOES NOT EXIST, IT IS THE LIFT OWNER THAT REQUESTED THE SERVICE VISIT WHO BEARS THE RESPONSIBILITY OF ALL RELATED EXPENSES.

BATTERIES: ALL BATTERIES CARRY THE BATTERY MANUFACTURER’S WARRANTY. MAINTENANCE REQUIREMENTS AND ABUSE PROVISIONS ARE AS STATED BY THE BATTERY MANUFACTURER. REFER TO BATTERY MANUFACTURER’S WARRANTY.

SPECIAL/MODIFIED INSTALLATIONS: THIS WARRANTY DOES NOT COVER “NON-TRADITIONAL” INSTALLATIONS. INSTALLATIONS ARE TO BE DONE ACCORDING TO SPECIFICATIONS, OR THE WARRANTY IS VOID.

WEARABLE COMPONENTS: SOME ITEMS ON LIFTS ARE SUBJECT TO NORMAL “WEAR AND TEAR” AND ARE NOT COVERED UNDER THIS WARRANTY.

NON-VEHICLE / RE-PURPOSED LIFTS: THIS WARRANTY DOES NOT COVER LIFTS THAT ARE “RE-PURPOSED” TO RAISE AND LOWER EQUIPMENT THAT ARE NOT CONSIDERED VEHICLES.

* THIS WARRANTY SUPERSEDES ALL OTHER WARRANTY POLICIES PREVIOUSLY STATED AND IN ALL OTHER MOHAWK PRODUCT SPECIFIC LITERATURE (MANUALS, BROCHURES, ETC.).

Rev 12/1/2015

GENERAL INSTRUCTIONS & WARNINGS:

STUDY, UNDERSTAND, AND FOLLOW ALL INSTRUCTIONS BEFORE OPERATING THIS DEVICE.
RETAIN THESE INSTRUCTIONS FOR FUTURE REFERENCE.

IF THE OPERATOR IS NOT FLUENT IN ENGLISH, THE PRODUCT INSTRUCTIONS AND WARNINGS SHALL BE READ TO AND DISCUSSED WITH THE OPERATOR IN THE OPERATOR'S NATIVE LANGUAGE BY THE PURCHASE/OWNER OR HIS DESIGNEE, MAKING SURE THE OPERATOR COMPREHENDS ITS CONTENTS.

THE EQUIPMENT DESCRIBED IN THIS MANUAL COULD BE POTENTIALLY DANGEROUS IF IMPROPERLY OR CARELESSLY OPERATED. FOR THE PROTECTION OF ALL PERSONS AND EQUIPMENT, ONLY COMPETENTLY TRAINED OPERATORS WHO ARE CRITICALLY AWARE OF THE PROPER OPERATING PROCEDURES, POTENTIAL DANGERS, AND SPECIFIC APPLICATION OF THIS EQUIPMENT SHOULD BE ALLOWED TO USE THIS EQUIPMENT AT ANY TIME.

BECAUSE OF POTENTIAL HAZARDS ASSOCIATED WITH THIS TYPE OF EQUIPMENT, NO ALTERATIONS SHALL BE MADE TO THIS PRODUCT.

FAILURE TO HEED ALL WARNINGS CONTAINED IN THIS MANUAL MAY RESULT IN PERSONAL INJURY AND/OR PROPERTY DAMAGE.

ALL WARRANTIES APPLICABLE TO THIS EQUIPMENT ARE CONTINGENT ON STRICT ADHERENCE TO THE OPERATION AND MAINTENANCE PROCEDURES IN THIS MANUAL.

RECOMMENDATIONS BY THE INDIVIDUAL USER OR USING ORGANIZATION FOR IMPROVING THIS PUBLICATION OR ANY ASPECT OF THE PRODUCT ARE ENCOURAGED AND SHOULD BE FORWARDED IN WRITING TO:

MOHAWK RESOURCES LTD.
PRODUCT IMPROVEMENTS
VROOMAN AVE.
PO BOX 110
AMSTERDAM, NY 12010

OPERATION INSTRUCTIONS & WARNINGS:

DO NOT EXCEED RATED CAPACITY. OVERLOADING CAN CAUSE DAMAGE TO OR FAILURE OF THE STAND.

USE STANDS ON HARD LEVEL SURFACE CAPABLE OF SUSTAINING THE LOAD. USE ON OTHER THAN HARD LEVEL SURFACES MAY RESULT IN POSSIBLE LOSS OF LOAD.

LOCATE SADDLE AT VEHICLE MANUFACTURER DESIGNATED SUPPORT POINTS. ALWAYS CONSULT THE VEHICLE LIFTING GUIDE FOR THE PROPER LIFTING POINTS ON ANY VEHICLE. THESE GUIDES ARE AVAILABLE FROM THE VEHICLE MANUFACTURERS.

PLACE LOAD IN THE CENTER OF THE SADDLE ONLY.

USE AS A MATCHED PAIR ONLY. USE A MINIMUM OF TWO STANDS TO SUPPORT AND STABILIZE ONE END OF A VEHICLE ONLY.

DO NOT APPLY HORIZONTAL FORCES OR LARGE TORQUE LOADS TO THE VEHICLE WHILE SUPPORTED BY STANDS.

DO NOT START ENGINE WHILE SUPPORTED ON STANDS.

DO NOT USE STANDS TO SIMULTANEOUSLY SUPPORT BOTH ENDS OF A VEHICLE.

ENSURE STANDS ARE STABLE AND VEHICLE IS BALANCED BEFORE LOWERING ONTO STANDS.

MOHAWK JACK STANDS

CAREFULLY LOWER VEHICLE ONTO ALL STANDS UTILIZED SIMULTANEOUSLY.

ONLY ATTACHMENTS, RESTRAINTS OR ADAPTERS SUPPLIED BY THE MANUFACTURER SHALL BE USED.

NO ALTERATIONS SHALL BE MADE TO THIS PRODUCT.

ALWAYS ADJUST HEIGHT OF JACK STAND UP TO LOAD WITH PAD SCREWED ALL THE WAY DOWN FIRST. THEN RAISE CENTER SLIDER UP TO HIGHEST PIN SETTING, THEN SPIN PAD UPWARD TO LOAD.

ALWAYS ENSURE THAT HITCH PIN IS FULLY INSERTED INTO HOLES THROUGH ENTIRE BASE FRAME AND THAT HAIR PIN IS RETAINING OTHER SIDE.

THE CENTER TUBE IS SPRING LOADED TO ASSIST IN RAISING TUBE TO DESIRED HEIGHT. USE CAUTION WHEN PULLING HITCH PIN. BUILT UP SPRING FORCE MAY RAISE CENTER TUBE SUDDENLY.

FAILURE TO HEED THESE WARNINGS MAY RESULT IN PERSONAL INJURY AND/OR PROPERTY DAMAGE.

MAINTENANCE AND INSPECTION INSTRUCTIONS & WARNINGS:

THIS PRODUCT SHALL BE MAINTAINED IN ACCORDANCE WITH THE FOLLOWING MAINTENANCE INSTRUCTIONS.

VISUAL INSPECTION SHALL BE MADE BEFORE EACH USE OF THIS UNIT BY CHECKING FOR ABNORMAL CONDITIONS SUCH AS CRACKED WELDS, LEAKS, AND DAMAGED, LOOSE, OR MISSING PARTS.

OTHER INSPECTIONS SHALL BE MADE PER OPERATING INSTRUCTIONS ABOVE.

EACH UNIT SHALL BE INSPECTED IMMEDIATELY IF THE LIFT IS BELIEVED TO HAVE BEEN SUBJECTED TO AN ABNORMAL LOAD OR SHOCK. IT IS RECOMMENDED THAT THIS INSPECTION BE MADE BY A MANUFACTURER'S OR SUPPLIER'S AUTHORIZED REPAIR FACILITY.

PERIODICALLY LUBRICATE THREADED PORTION OF LIFT PAD WITH WD-40 OR OTHER LIGHT LUBRICANT.

OWNERS AND/OR OPERATORS SHOULD BE AWARE THAT REPAIR OF THIS EQUIPMENT MAY REQUIRE SPECIALIZED KNOWLEDGE AND FACILITIES. IT IS RECOMMENDED THAT AN ANNUAL INSPECTION OF THIS UNIT BE MADE BY A MANUFACTURER'S OR SUPPLIER'S AUTHORIZED REPAIR FACILITY AND THAT ANY DEFECTIVE PARTS, DECALS, OR WARNING LABELS BE REPLACED WITH MANUFACTURER'S OR SUPPLIER'S SPECIFIED PARTS. A LIST OF AUTHORIZED REPAIR FACILITIES IS AVAILABLE FROM THE MANUFACTURER OR SUPPLIER.

ANY UNIT THAT APPEARS TO BE DAMAGED IN ANY WAY, IS FOUND TO BE WORN, OR OPERATES ABNORMALLY **SHALL BE REMOVED FROM SERVICE UNTIL REPAIRED**. IT IS RECOMMENDED THAT NECESSARY REPAIRS BE MADE BY THE MANUFACTURER'S OR SUPPLIER'S AUTHORIZED REPAIR FACILITY IF REPAIRS ARE PERMITTED BY THE MANUFACTURER OR SUPPLIER.

MOHAWK

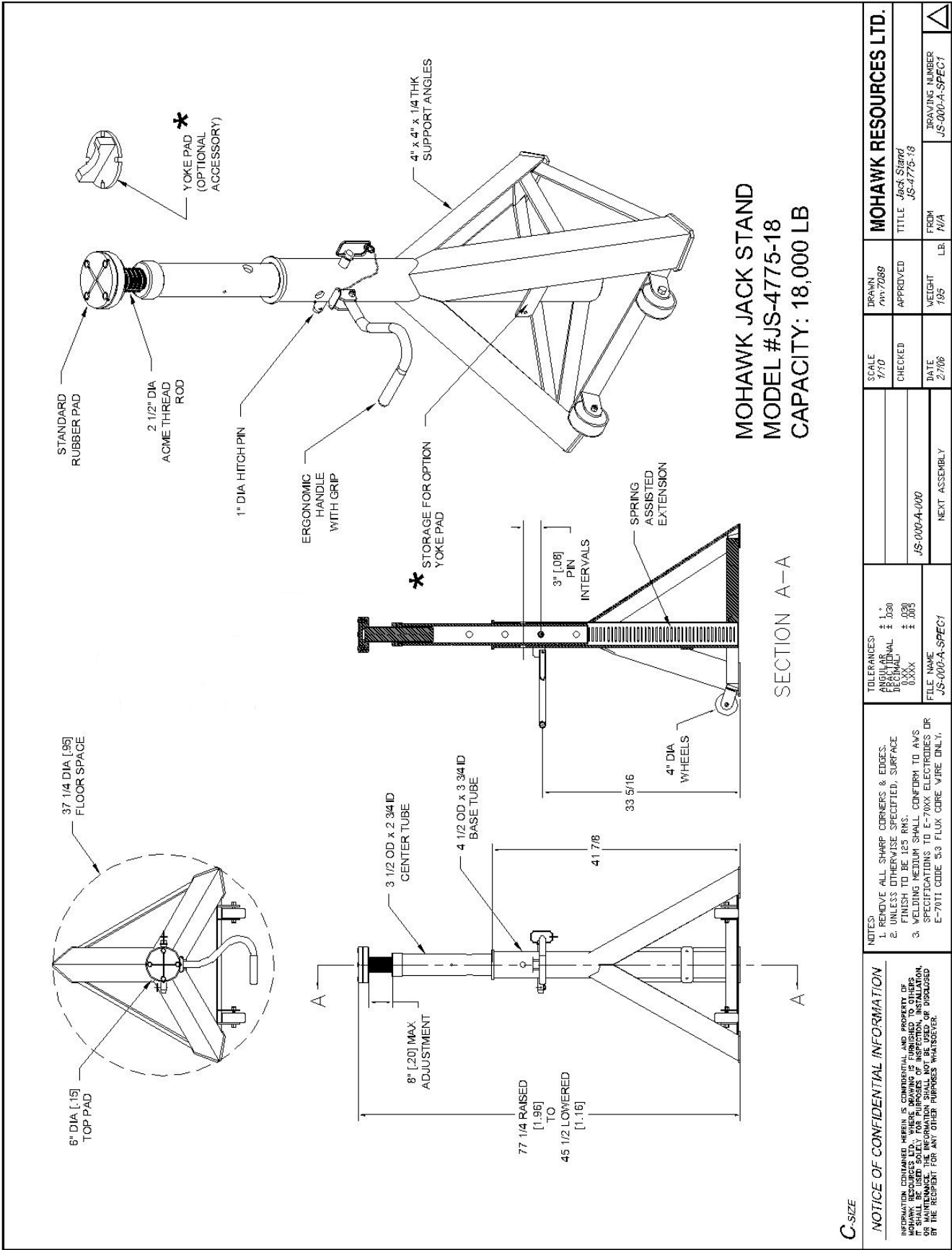
MODEL JS-4775-18 & JS-4775-24

DRAWINGS & PARTS



MOHAWK RESOURCES LTD.

VROOMAN AVE.
PO BOX 110
AMSTERDAM, NY 12010
TOLL FREE: 1-800-833-2006
LOCAL: 1-518-842-1431
FAX: 1-518-842-1289
INTERNET: WWW.MOHAWKLIFTS.COM
E-MAIL: SERVICE@MOHAWKLIFTS



C-SIZE

NOTICE OF CONFIDENTIAL INFORMATION

INFORMATION CONTAINED HEREIN IS CONFIDENTIAL AND PROPERTY OF MOHAWK RESOURCES LTD. IT SHALL BE USED SOLELY FOR PURPOSES OF INSPECTION, INSTALLATION, OR MAINTENANCE. THE INFORMATION SHALL NOT BE REPRODUCED OR DISCLOSED BY THE RECIPIENT FOR ANY OTHER PURPOSES WITHOUT WRITTEN PERMISSION.

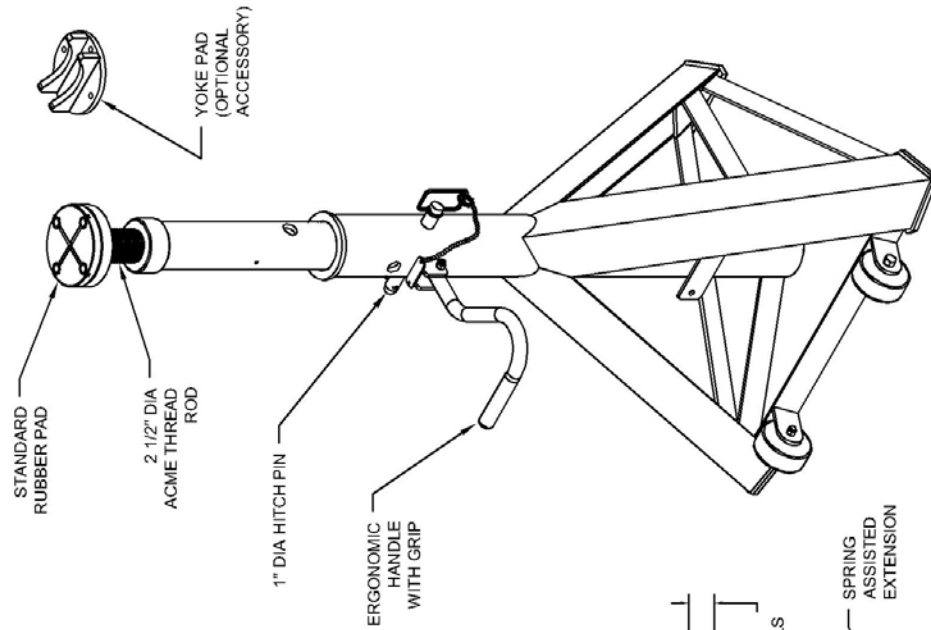
- NOTES:
1. REMOVE ALL SHARP CORNERS & EDGES.
 2. UNLESS OTHERWISE SPECIFIED, SURFACE FINISH TO BE 125 RMS.
 3. WELDING METIUM SHALL CONFORM TO AWS SPECIFICATIONS TO E-70XX ELECTRODES OR E-7011 CODE 5.3 FLUX CORE WIRE ONLY.

| | |
|-------------|----------------|
| TOLERANCES: | ± 1.5 |
| ANGULAR | $\pm .030$ |
| DECIMAL | $\pm .003$ |
| XXX | $\pm .003$ |
| FILE NAME | JS-000-A-SPEC1 |

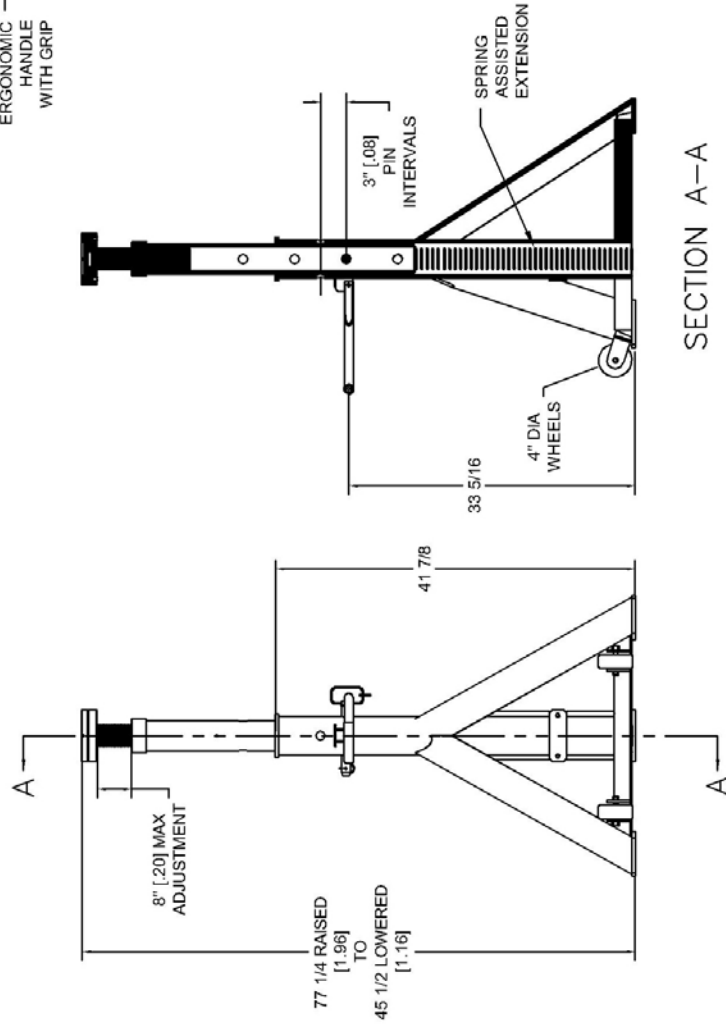
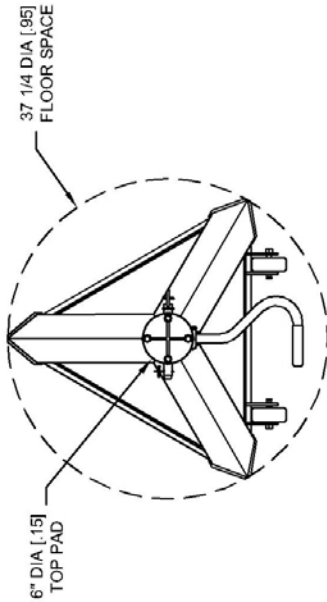
| | |
|--------------|----------|
| JS-000-A-000 | ASSEMBLY |
|--------------|----------|

| | | | |
|---------|--------|---------|------|
| CHECKED | DATE | WEIGHT | FROM |
| 7/10 | 2/7/06 | 195 LB. | N/A |

| | | | |
|----------------|----------|------------|-----------------------|
| DRAWN | APPROVED | TITLE | MOHAWK RESOURCES LTD. |
| 7/10 | 7/10 | JS-4775-18 | Jack Stand |
| DRAWING NUMBER | | | JS-000-A-SPEC1 |



MOHAWK JACK STAND
MODEL #JS-4775-24
CAPACITY: 24,000 LB

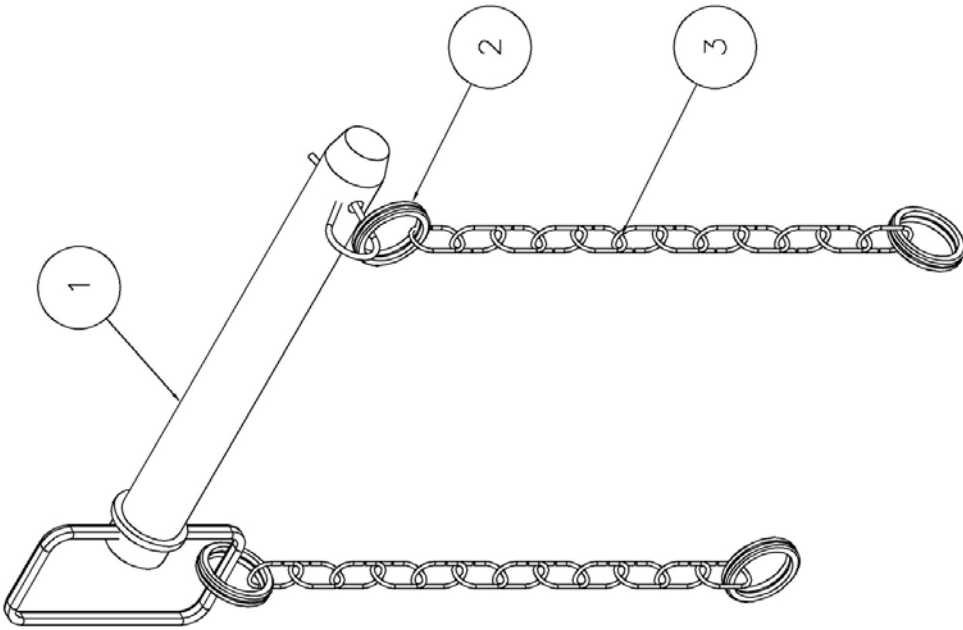


SECTION A-A

| | | | | | | | | | | | | | | | |
|---|--|--|--|---------------|--|--|--|-------------|--|--|--|-----------------------|--|--|--|
| NOTICE OF CONFIDENTIAL INFORMATION | | | | NOTES: | | | | TOLERANCES: | | | | MOHAWK RESOURCES LTD. | | | |
| 1. REMOVE ALL SHARP CORNERS & EDGES. 2. UNLESS OTHERWISE SPECIFIED, SURFACE FINISH TO BE 125 RMS. 3. WELDING METHOD SHALL CONFORM TO AWS SPECIFICATIONS TO E-70XX ELECTRODES OR E-70TT CODE S3 FLUX CORE WIRE ONLY. | | | | ANGULAR | | | | DRAWN | | | | TITLE | | | |
| | | | | FRACTIONAL | | | | CHECKED | | | | APPROVED | | | |
| | | | | DECIMAL | | | | DATE | | | | WEIGHT | | | |
| FILE NAME | | | | NEXT ASSEMBLY | | | | FROM | | | | DRAWING NUMBER | | | |
| JS-000-A-SPEC2 | | | | JS-000-A-004 | | | | 3/16/06 | | | | JS-000-A-SPEC2 | | | |
| | | | | | | | | | | | | | | | |

C-SIZE

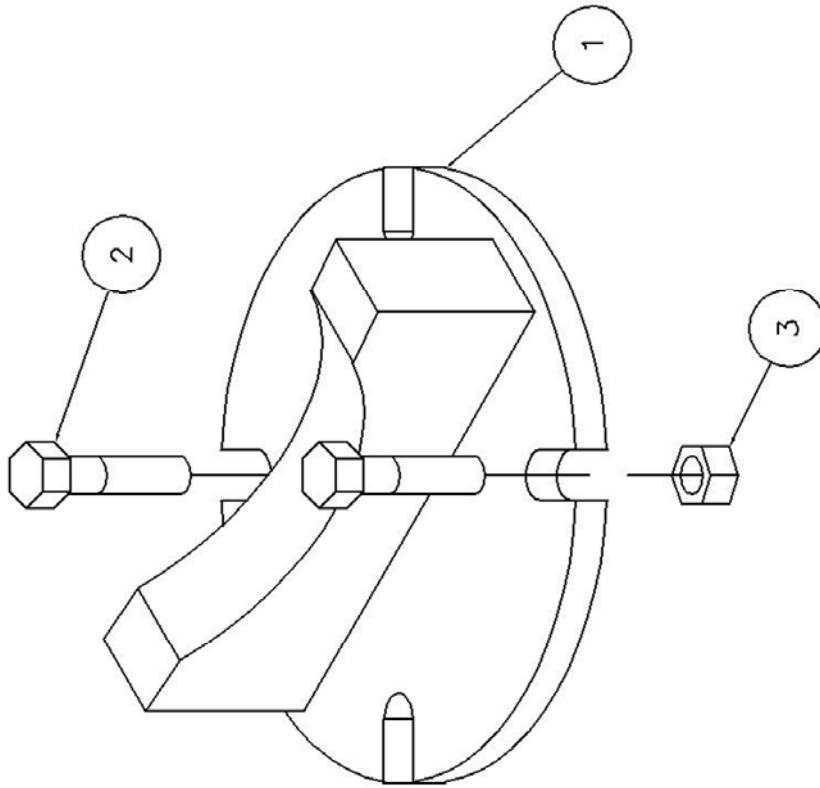




| | | | | |
|------|--------------|--|-----|-------|
| 3 | JS-000-P-401 | Double Loop Coil Chain, Zinc Plated, Size 5 x 12 Links | 2 | 0.250 |
| 2 | 600-900-011 | Split Ring, 1.25 OD x 1" ID, Zinc Plated | 4 | 0.100 |
| 1 | 600-900-009 | Hitch Pin, 1 Dia x 6 3/4 Usable Lg w/ Hairpin | 1 | 2.000 |
| ITEM | NAME | DESCRIPTION | QTY | MASS |

| | | | | | |
|---|--|---|--|-------------|--|
| C-SIZE | | Parts List | | | |
| NOTICE OF CONFIDENTIAL INFORMATION | | NOTES: | | TOLERANCES: | |
| INFORMATION CONTAINED HEREIN IS CONFIDENTIAL AND PROPERTY OF MOHAWK RESOURCES LTD. IT SHALL BE USED SOLELY FOR PURPOSES OF INSPECTION, INSTALLATION, OR MAINTENANCE. THE INFORMATION SHALL NOT BE USED OR DISCLOSED BY THE RECIPIENT FOR ANY OTHER PURPOSES WHATSOEVER. | | 1. REMOVE ALL SHARP CORNERS & EDGES. 2. UNLESS OTHERWISE SPECIFIED, SURFACE FINISH TO BE 125 RMS. 3. WELDING MEDIUM SHALL CONFORM TO AWS SPECIFICATIONS TO E-70XX ELECTRODES OR E-70T1 CODE 53 FLUX CORE WIRE ONLY. | | ± 1° | |
| | | | | ANGULAR | |
| | | | | ± .030 | |
| | | | | DECIMAL | |
| | | | | ± .005 | |
| | | | | 0.000 | |
| | | | | 0.000 | |
| | | | | 0.000 | |
| | | | | 0.000 | |
| | | | | 0.000 | |
| | | | | 0.000 | |
| | | | | 0.000 | |
| | | | | 0.000 | |
| | | | | 0.000 | |
| | | | | 0.000 | |
| | | | | 0.000 | |
| | | | | 0.000 | |
| | | | | 0.000 | |
| | | | | 0.000 | |
| | | | | 0.000 | |
| | | | | 0.000 | |
| | | | | 0.000 | |
| | | | | 0.000 | |
| | | | | 0.000 | |
| | | | | 0.000 | |
| | | | | 0.000 | |
| | | | | 0.000 | |
| | | | | 0.000 | |
| | | | | 0.000 | |
| | | | | 0.000 | |
| | | | | 0.000 | |
| | | | | 0.000 | |
| | | | | 0.000 | |
| | | | | 0.000 | |
| | | | | 0.000 | |
| | | | | 0.000 | |
| | | | | 0.000 | |
| | | | | 0.000 | |
| | | | | 0.000 | |
| | | | | 0.000 | |
| | | | | 0.000 | |
| | | | | 0.000 | |
| | | | | 0.000 | |
| | | | | 0.000 | |
| | | | | 0.000 | |
| | | | | 0.000 | |
| | | | | 0.000 | |
| | | | | 0.000 | |
| | | | | 0.000 | |
| | | | | 0.000 | |
| | | | | 0.000 | |
| | | | | 0.000 | |
| | | | | 0.000 | |
| | | | | 0.000 | |
| | | | | 0.000 | |
| | | | | 0.000 | |
| | | | | 0.000 | |
| | | | | 0.000 | |
| | | | | 0.000 | |
| | | | | 0.000 | |
| | | | | 0.000 | |
| | | | | 0.000 | |
| | | | | 0.000 | |
| | | | | 0.000 | |
| | | | | 0.000 | |
| | | | | 0.000 | |
| | | | | 0.000 | |
| | | | | 0.000 | |
| | | | | 0.000 | |
| | | | | 0.000 | |
| | | | | 0.000 | |
| | | | | 0.000 | |
| | | | | 0.000 | |
| | | | | 0.000 | |
| | | | | 0.000 | |
| | | | | 0.000 | |
| | | | | 0.000 | |
| | | | | 0.000 | |
| | | | | 0.000 | |
| | | | | 0.000 | |
| | | | | 0.000 | |
| | | | | 0.000 | |
| | | | | 0.000 | |
| | | | | 0.000 | |
| | | | | 0.000 | |
| | | | | 0.000 | |
| | | | | 0.000 | |
| | | | | 0.000 | |
| | | | | 0.000 | |
| | | | | 0.000 | |
| | | | | 0.000 | |
| | | | | 0.000 | |
| | | | | 0.000 | |
| | | | | 0.000 | |
| | | | | 0.000 | |
| | | | | 0.000 | |
| | | | | 0.000 | |
| | | | | 0.000 | |
| | | | | 0.000 | |
| | | | | 0.000 | |
| | | | | 0.000 | |
| | | | | 0.000 | |
| | | | | 0.000 | |
| | | | | 0.000 | |
| | | | | 0.000 | |
| | | | | 0.000 | |
| | | | | 0.000 | |
| | | | | 0.000 | |
| | | | | 0.000 | |
| | | | | 0.000 | |
| | | | | 0.000 | |
| | | | | 0.000 | |
| | | | | 0.000 | |
| | | | | 0.000 | |
| | | | | 0.000 | |
| | | | | 0.000 | |
| | | | | 0.000 | |
| | | | | 0.000 | |
| | | | | 0.000 | |
| | | | | 0.000 | |
| | | | | 0.000 | |
| | | | | 0.000 | |
| | | | | 0.000 | |
| | | | | 0.000 | |
| | | | | 0.000 | |
| | | | | 0.000 | |
| | | | | 0.000 | |
| | | | | 0.000 | |
| | | | | 0.000 | |
| | | | | 0.000 | |
| | | | | 0.000 | |
| | | | | 0.000 | |
| | | | | 0.000 | |
| | | | | 0.000 | |
| | | | | 0.000 | |
| | | | | 0.000 | |
| | | | | 0.000 | |
| | | | | 0.000 | |
| | | | | 0.000 | |
| | | | | 0.000 | |
| | | | | 0.000 | |
| | | | | 0.000 | |
| | | | | 0.000 | |
| | | | | 0.000 | |
| | | | | 0.000 | |
| | | | | 0.000 | |
| | | | | 0.000 | |
| | | | | 0.000 | |
| | | | | 0.000 | |
| | | | | 0.000 | |
| | | | | 0.000 | |
| | | | | 0.000 | |
| | | | | 0.000 | |
| | | | | 0.000 | |
| | | | | 0.000 | |
| | | | | 0.000 | |

| # | DESCRIPTION | DATE | APPROVED |
|---|----------------------------|------------|----------|
| A | ITEM 1 VIEW REVISED | 04/25/2007 | ddk0879 |
| B | 1. ITEM 1 WAS JS-300-W-002 | 06/19/2008 | DM |
| | 2. WEIGHT WAS 4.75 | | |

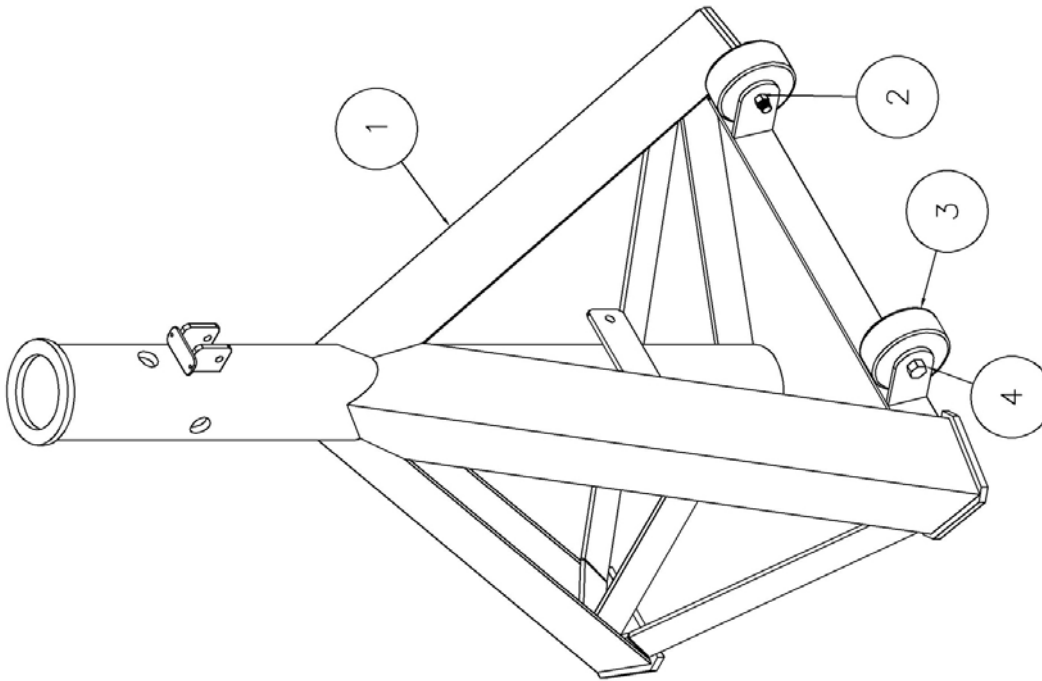


| ITEM | NAME | DESCRIPTION | QTY | MATERIAL | VENDOR | NOTE | MASS | PRICE |
|------|--------------|---|-----|----------|--------|------|-------|-------|
| 3 | 600-680-012 | Nut, Plain, 3/8-16 NC | 2 | | | | 0.002 | |
| 2 | 600-640-082 | Bolt, Hex Head, 3/8-16 NC x 1 1/2 (GR5) | 2 | | | | 0.050 | |
| 1 | JS-300-W-003 | Yoke Pad Adapter Weldment | 1 | | | | 5.000 | |


△/B

C-size

| NOTICE OF CONFIDENTIAL INFORMATION | | | | Parts List | | | |
|---|--|--|--|---|-----------|----------|---------|
| NOTES: 1. REMOVE ALL SHARP CORNERS & EDGES. 2. UNLESS OTHERWISE SPECIFIED, SURFACE FINISH TO BE 125 RMS. 3. WELDING MEDIAN SHALL CONFORM TO AWS SPECIFICATIONS TO E-70XX ELECTRODES OR E-70TT CODE 53 FLUX CORE WIRE ONLY. | | | | SCALE | 1:25 | DRAWN | FWV7089 |
| | | | | CHECKED | | APPROVED | |
| | | | | DATE | 9/18/2008 | WEIGHT | 5.05 |
| TOLERANCES: FINISH SURF. ± .005 HOLE ± .005 BORE ± .005 HOLE ± .005 BORE ± .005 FILE NAME JS-000-A-003 | | | | TITLE JS-000 Yoke Pad Adapter FROM n/a TRAVEL NUMBER JS-000-A-003 | | | |



| ITEM | NAME | DESCRIPTION | QTY | MASS |
|------|--------------|---|-----|---------|
| 4 | 600-640-018 | Bolt, Hex Head, 1/2-13 NC x 3" (GR5) | 2 | 0.220 |
| 3 | 600-920-012 | Wheel, 4" Dia x 1/2 Dia Axle x 1 1/2 Wide | 2 | 0.000 |
| 2 | 600-690-014 | Nut, Nylon Lock, 3/8-16 NC | 2 | 0.020 |
| 1 | JS-100-W-001 | Jack Stand Base Weldment | 1 | 130.000 |

| | | |
|---------------|------------|---|
| SCALE | DRAWN | MOHAWK RESOURCES LTD. |
| 1" = 1'0" | gdk | |
| CHECKED | APPROVED | TITLE |
| JS-000-A-001 | | Jack Stand Base Assembly |
| DATE | WEIGHT | FROM |
| 9/2/04 | 125.24 LB. | DRAWING NUMBER |
| NEXT ASSEMBLY | | JS-100-A-001 |
| | |  |

C-SIZE

NOTICE OF CONFIDENTIAL INFORMATION

INFORMATION CONTAINED HEREIN IS CONFIDENTIAL AND PROPERTY OF
 MOHAWK RESOURCES LTD., WHERE DRAWING IS FURNISHED TO OTHERS.
 IT SHALL BE USED SOLELY FOR PURPOSES OF INSPECTION, INSTALLATION,
 OR MAINTENANCE. THE INFORMATION SHALL NOT BE USED OR DISCLOSED
 BY THE RECIPIENT FOR ANY OTHER PURPOSES WHATSOEVER.

NOTES:

1. REMOVE ALL SHARP CORNERS & EDGES.
2. UNLESS OTHERWISE SPECIFIED, SURFACE FINISH TO BE 125 RMS.
3. WELDING MEDIUM SHALL CONFORM TO AWS SPECIFICATIONS TO E-70XX ELECTRODES E-70T1 CODE 5.3 FLUX CORE WIRE ONLY.

| | |
|-------------|--|
| TOLERANCES: | |
| ANGULAR | |
| FRACTIONAL | |
| DECIMAL: | |
| 0.XX | |
| 0.XXX | |

FILE NAME
JS-100-A-001

| | | |
|-------------------|---------|----------------|
| SCALE 1" = 10' | CHECKED | DATE 9/2/04 |
|-------------------|---------|----------------|

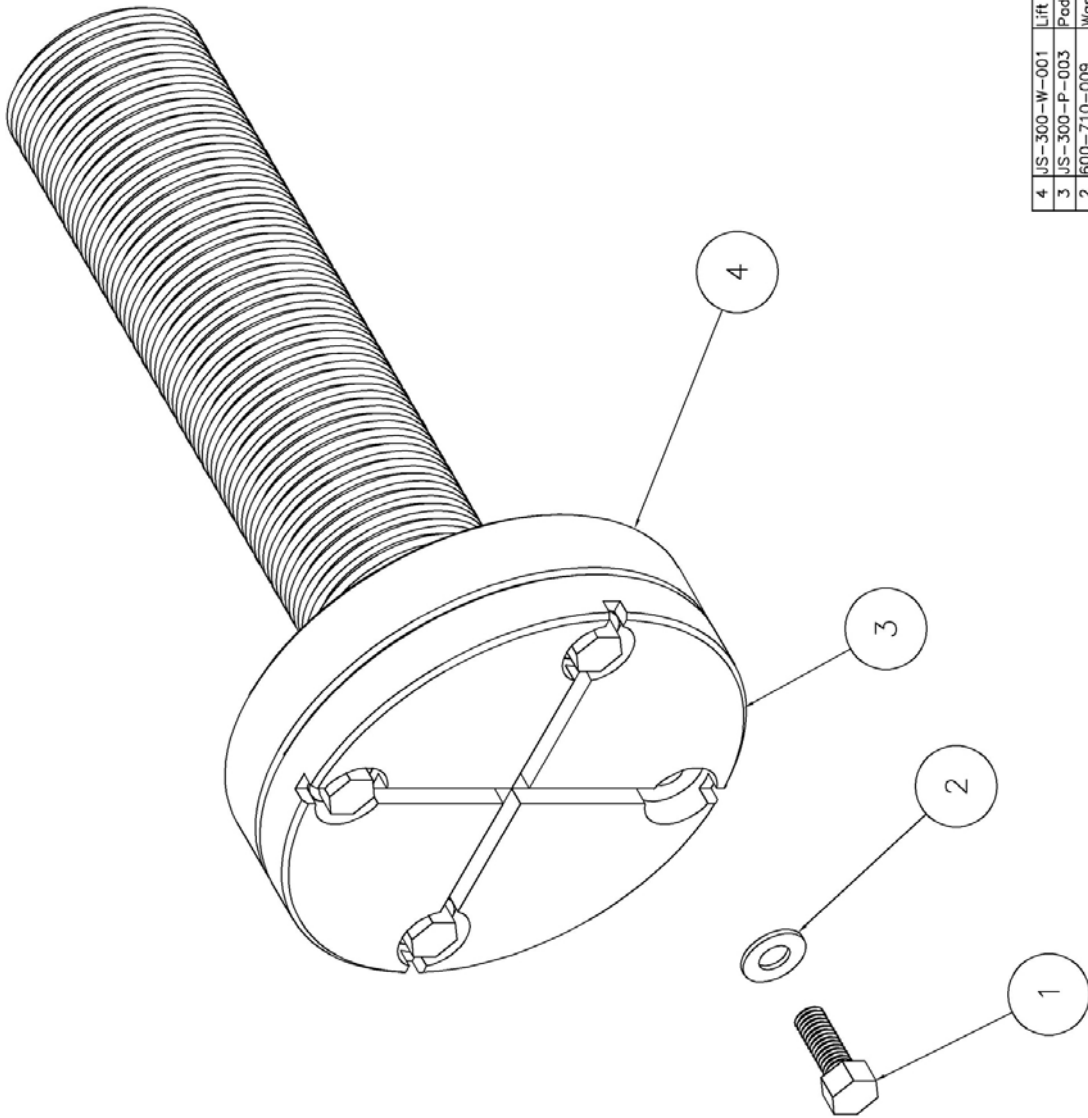
| | | |
|---------------------|----------|-------------------------|
| DRAWN <i>dak</i> | APPROVED | WEIGHT 125.24 |
|---------------------|----------|-------------------------|

| | | |
|----|-------|-------------|
| MO | TITLE | FROM n/a |
|----|-------|-------------|

AWK

ISO

| | | |
|-----|--|---|
| TD. | |  |
|-----|--|---|



C-size

NOTICE OF CONFIDENTIAL INFORMATION

INFORMATION CONTAINED HEREIN IS CONFIDENTIAL AND PROPERTY OF MOHAWK RESOURCES LTD. WHERE DRAWING IS FURNISHED TO OTHERS IT SHALL BE USED SOLELY FOR PURPOSES OF INSPECTION, INSTALLATION, REPAIR, MAINTENANCE, OR REPRODUCTION. IT IS NOT TO BE DISCLOSED OR BY THE RECIPIENT FOR ANY OTHER PURPOSES WHATSOEVER.

- NOTES:
- 1. REMOVE ALL SHARP CORNERS & EDGES.
 - 2. UNLESS OTHERWISE SPECIFIED, SURFACE FINISH TO BE 125 RMS.
 - 3. WELDING MEDIUM SHALL CONFORM TO AWS SPECIFICATIONS TO E-70XX ELECTRODES OR E-70TT CODE 5.3 FLUX CORE WIRE ONLY.

TOLERANCES:
FRACTIONAL ± 1/32
DECIMAL ± .005
XXX ± .005

FILE NAME
JS-300-A-001

NEXT ASSEMBLY

DATE
8/31/04

WEIGHT
26.16 LB.

APPROVED

DATE

MOHAWK RESOURCES LTD.

JS LIFT PAD ASSEMBLY

DRAWING NUMBER
JS-300-A-001

| Parts List | | | |
|------------|--------------|--------------------------------------|-----|
| ITEM | NAME | DESCRIPTION | QTY |
| 4 | JS-300-W-001 | Lift Pad Weldment | 1 |
| 3 | JS-300-P-003 | Pad | 1 |
| 2 | 600-710-009 | Washer, Flat, 3/8 | 4 |
| 1 | 600-640-083 | Bolt, Hex Head, 3/8-16 NC x 1" (GR5) | 4 |
| MASS | | | |

MOHAWK

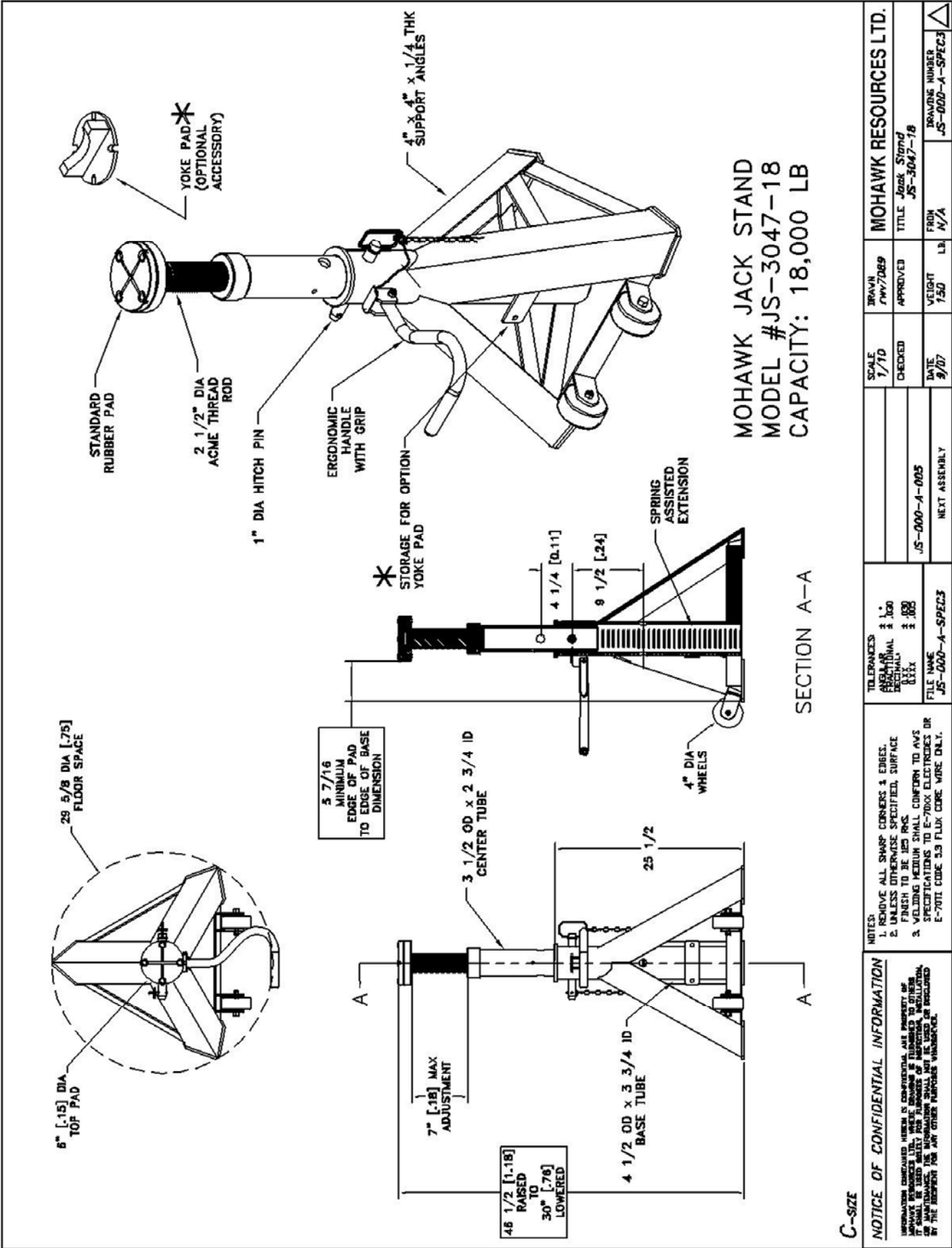
MODEL JS-3047-18 & JS-3047-24

DRAWINGS & PARTS



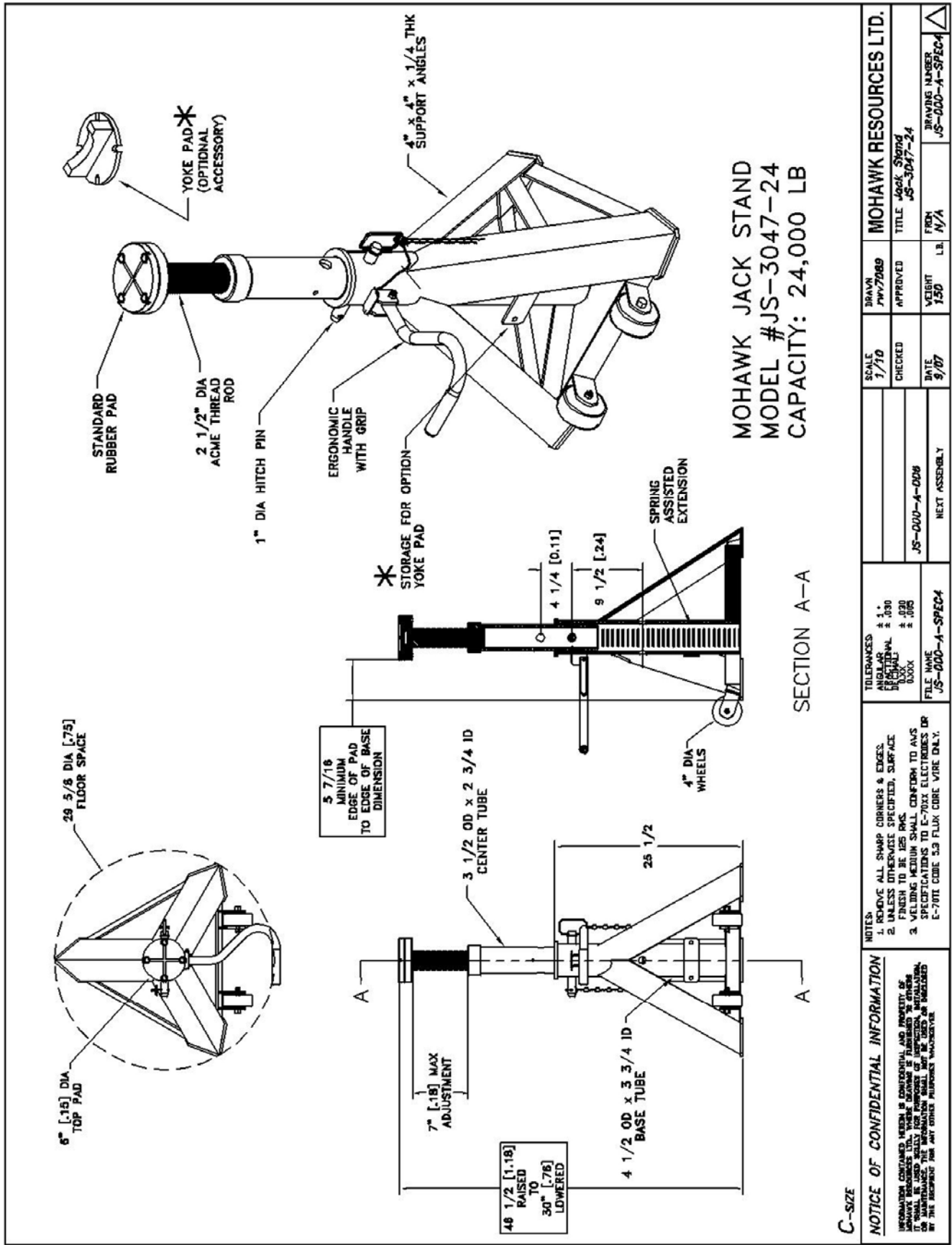
MOHAWK RESOURCES LTD.

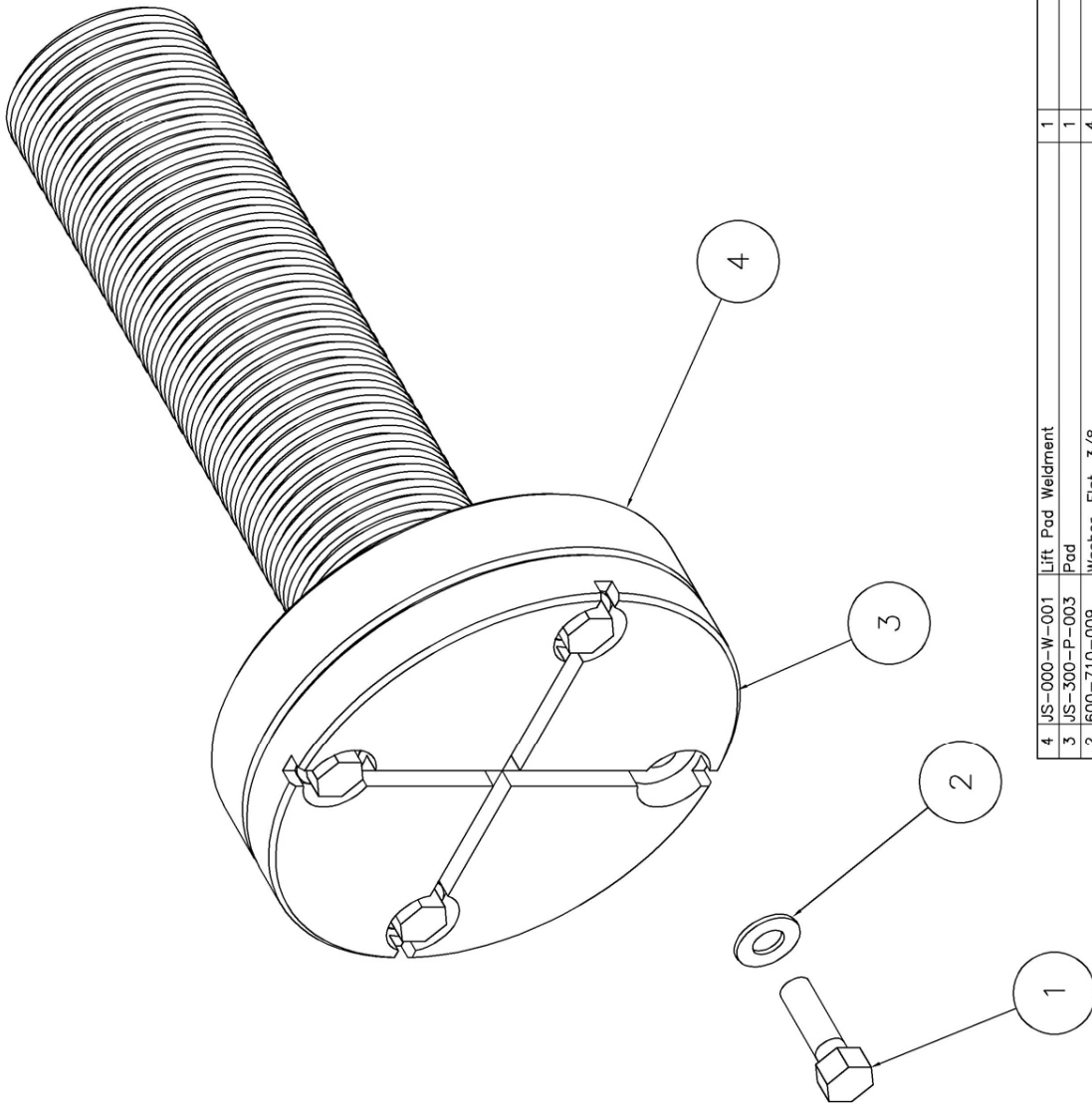
VROOMAN AVE.
PO BOX 110
AMSTERDAM, NY 12010
TOLL FREE: 1-800-833-2006
LOCAL: 1-518-842-1431
FAX: 1-518-842-1289
INTERNET: WWW.MOHAWKLIFTS.COM
E-MAIL: SERVICE@MOHAWKLIFTS



C-size

| NOTICE OF CONFIDENTIAL INFORMATION | | NOTES: | | TOLERANCES | | SCALE | | DRAWN | | MOHAWK RESOURCES LTD. | |
|--|--|--|--|---|--|-------------------------------|--|----------|--|-----------------------|--|
| UNLESS OTHERWISE SPECIFIED, ALL DIMENSIONS ARE IN INCHES. DIMENSIONS IN PARENTHESES ARE IN MILLIMETERS. IT SHALL BE THE USER'S RESPONSIBILITY TO OBTAIN THE NECESSARY PERMITS AND INSURANCE FOR THE ERECTION OF ANY OTHER STRUCTURE. DIMENSIONS ARE NOT TO BE USED FOR ANY OTHER PURPOSES. | | 1. REMOVE ALL SHARP CORNERS & EDGES. 2. UNLESS OTHERWISE SPECIFIED, SURFACE FINISH TO BE 125 RMS. 3. WELDING MEDIAN SHALL CONFORM TO AWS SPECIFICATIONS TO E-70XX ELECTRODES OR E-70XX CODE 3.3 FLUX CORE WIRE ONLY. | | ANGULAR ± 1° DIMENSIONAL ± .000 DECIMAL ± .000 HOLE ± .000 | | 1/10 | | PWW/DB9 | | TITLE JS-3047-18 | |
| | | FILE NAME JS-000-A-SPEC3 | | CHECKED | | DATE 9/07 | | APPROVED | | FROM N/A | |
| | | NEXT ASSEMBLY | | WEIGHT 1.50 LB | | DRAWING NUMBER JS-000-A-SPEC3 | | | | | |





C-SIZE

1

C-SIZE

NOTICE OF CONFIDENTIAL INFORMATION

INFORMATION CONTAINED HEREIN IS CONFIDENTIAL AND PROPERTY OF MOHAWK RESOURCES LTD., WHERE DRAWING IS FURNISHED TO OTHERS IT SHALL BE USED SOLELY FOR PURPOSES OF INSPECTION, INSTALLATION, AND REPAIR OF THE EQUIPMENT TO WHICH IT APPLIES. IT IS NOT TO BE DISCLOSED BY THE RECIPIENT FOR ANY OTHER PURPOSES WHATSOEVER.

NOTES:

1. REMOVE ALL SHARP CORNERS & EDGES.
2. UNLESS OTHERWISE SPECIFIED, SURFACE FINISH TO BE 125 RMS.
3. WELDING MEDIUM SHALL CONFORM TO AWS SPECIFICATIONS TO E-70XX ELECTRODES OR E-70TT CODE 5.3 FLUX CORE WIRE ONLY.

TOLERANCES:

ANGULAR ± 1°
FRACTIONAL ± .030
DECIMAL ± .030
XXX ± .005

FILE NAME

JS-000-A-007

NEXT ASSEMBLY

ITEM

NAME

DESCRIPTION

QTY

MATERIAL

VENDOR

NOTE

MASS

PRICE

4

JS-000-W-001

Lift Pad Weldment

1

19.900

3

JS-300-P-003

Pad

1

6" Dia x 3/4 Thk

5.500

2

600-710-009

Washer, Flat, 3/8

4

0.007

1

600-640-083

Bolt, Hex Head, 3/8-16 NC x 1 1/4" (GR5)

4

0.060

Parts List

SCALE FULL

DRAWN D.M.

CHECKED

APPROVED

TITLE

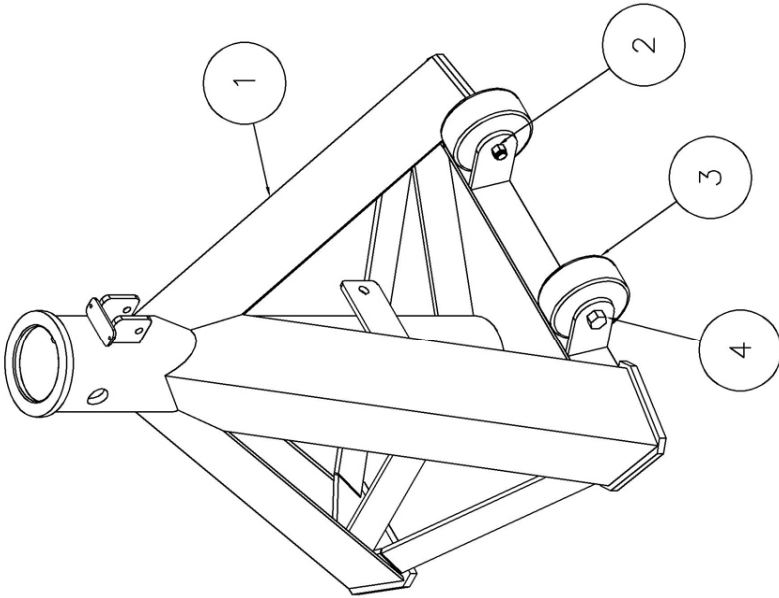
JS LIFT PAD ASSEMBLY

DATE 9/07

WEIGHT 25.67 LB.

DRAWING NUMBER JS-000-A-007

MOHAWK RESOURCES LTD.



JS-3047

| | | | |
|------|--------------|---|-----|
| 4 | 600-640-018 | Bolt, Hex Head, 1/2-13 NC x 3" (GR5) | 2 |
| 3 | 600-920-012 | Wheel, 4" Dia x 1/2 Dia Axle x 1 1/2 Wide | 2 |
| 2 | 600-690-014 | Nut, Nylon Lock, 3/8-16 NC | 2 |
| 1 | JS-100-W-005 | Jack Stand Base Weldment (JS-3047-18) | 1 |
| ITEM | NAME | DESCRIPTION | QTY |

C-size

Parts List

| | | | | | | | | | | | | | | | |
|---|--|--|--|---------------|--|-----------------------|--|----------------------|--|----------|--|---|--|---|--|
| NOTICE OF CONFIDENTIAL INFORMATION INFORMATION CONTAINED HEREIN IS CONFIDENTIAL AND PROPERTY OF MOHAWK RESOURCES LTD., WHERE DRAWING IS FURNISHED TO OTHERS IT SHALL BE USED SOLELY FOR PURPOSES OF INSPECTION, INSTALLATION, OR MAINTENANCE. THE INFORMATION SHALL NOT BE USED OR DISCLOSED BY THE RECIPIENT FOR ANY OTHER PURPOSES WHATSOEVER. | NOTES: 1. REMOVE ALL SHARP CORNERS & EDGES. 2. UNLESS OTHERWISE SPECIFIED, SURFACE FINISH TO BE 125 RMS. 3. WELDING MEDIUM SHALL CONFORM TO AWS SPECIFICATIONS TO E-70XX ELECTRODES OR E-70T1 CODE 5.3 FLUX CORE WIRE ONLY. | TOLERANCES: ANGULAR 1° FRACTIONAL ± .030 DECIMAL ± .030 XXX ± .005 FILE NAME JS-100-A-002 | | NEXT ASSEMBLY | | DATE 3/07 | | WEIGHT 103.26 LB. | | FROM | | DRAWING NUMBER JS-100-A-002 | | △ | |
| | | SCALE 1/4 | | DRAWN dak | | MOHAWK RESOURCES LTD. | | CHECKED | | APPROVED | | TITLE JS-3047-18 Jack Stand Base Assembly | | | |
| | | JS-000-A-005 | | | | | | | | | | | | | |
| | | | | | | | | | | | | | | | |

MOHAWK

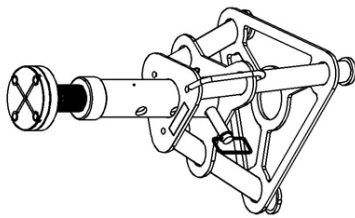
MODEL JS-1830-18 & JS-1830-24

DRAWINGS & PARTS



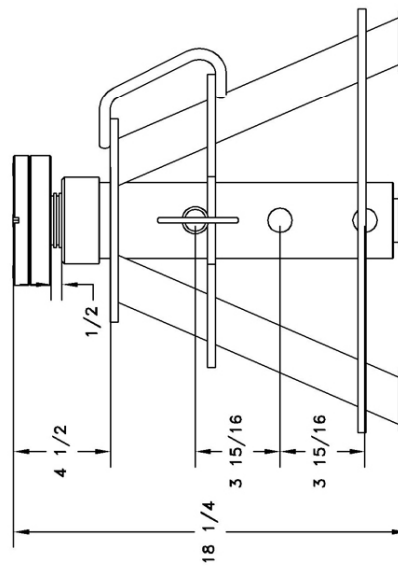
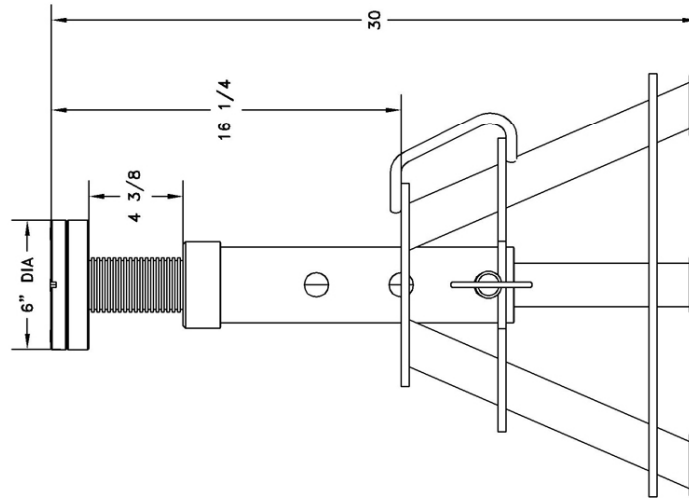
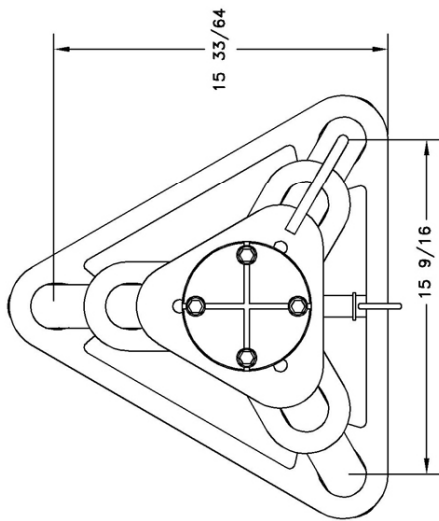
MOHAWK RESOURCES LTD.

VROOMAN AVE.
PO BOX 110
AMSTERDAM, NY 12010
TOLL FREE: 1-800-833-2006
LOCAL: 1-518-842-1431
FAX: 1-518-842-1289
INTERNET: WWW.MOHAWKLIFTS.COM
E-MAIL: SERVICE@MOHAWKLIFTS



JS-1830-18
&
JS-1830-24

PG 2 OF 2



C-SIZE

NOTICE OF CONFIDENTIAL INFORMATION

INFORMATION CONTAINED HEREIN IS CONFIDENTIAL AND PROPERTY OF MOHAWK RESOURCES LTD., WHERE DRAWING IS FURNISHED TO OTHERS. IT SHALL BE USED SOLELY FOR PURPOSES OF INSPECTION, INSTALLATION, REPAIR, OR MAINTENANCE OF THE EQUIPMENT FOR WHICH IT WAS DESIGNED BY THE RECIPIENT FOR ANY OTHER PURPOSES WHATSOEVER.

- NOTES:
1. REMOVE ALL SHARP CORNERS & EDGES.
 2. UNLESS OTHERWISE SPECIFIED, SURFACE FINISH TO BE 125 RMS.
 3. WELDING MEDIUM SHALL CONFORM TO AWS SPECIFICATIONS TO E-70XX ELECTRODES OR E-7011 CODE 5.3 FLUX CORE WIRE ONLY.

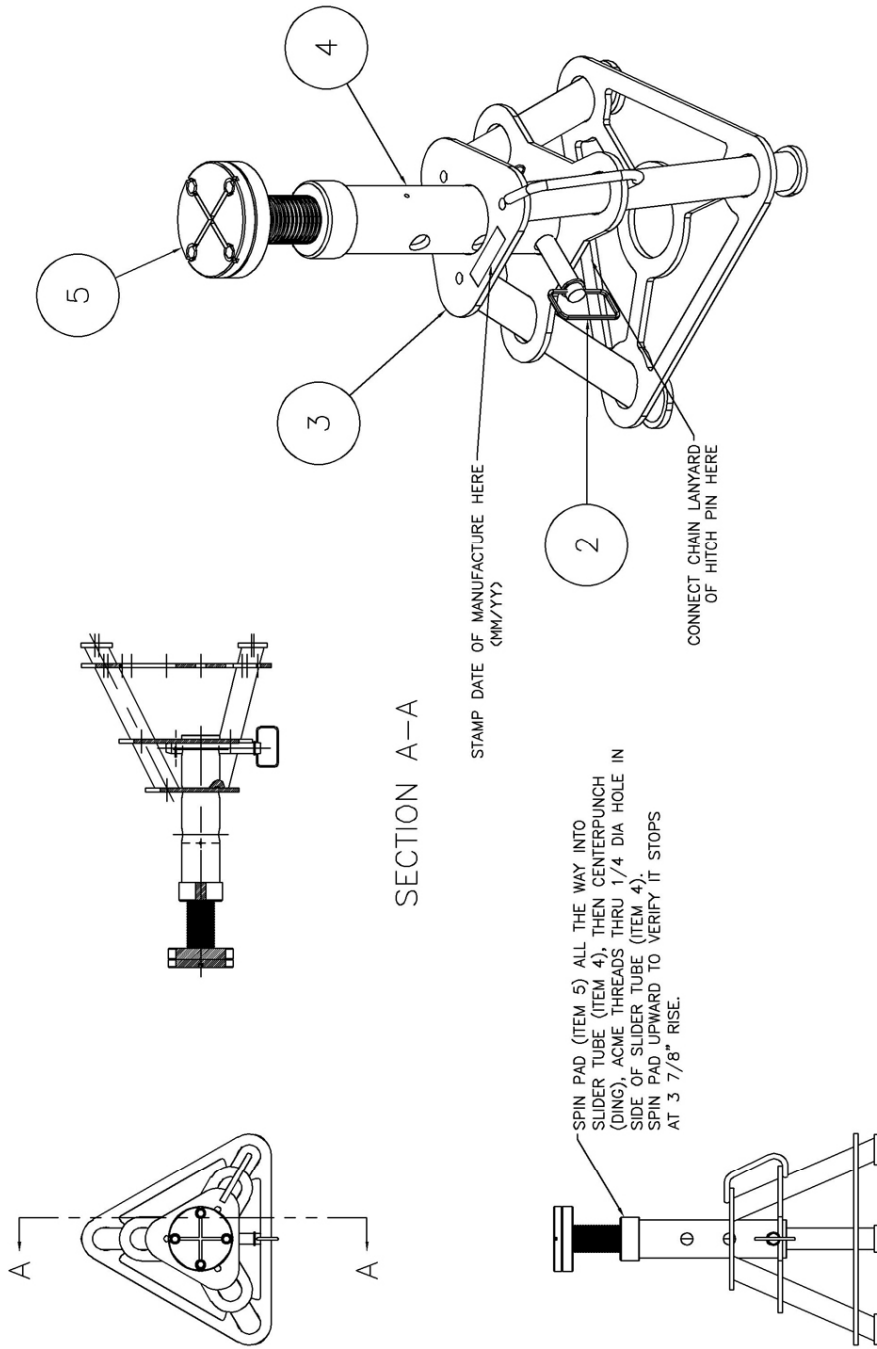
TOLERANCES:
FRACTIONAL ± 1/32
DECIMAL ± .030
XXX ± .005

FILE NAME
JS-400-A-002

NEXT ASSEMBLY

| SCALE | DRAWN | MOHAWK RESOURCES LTD. |
|---------|-----------|-----------------------|
| 1/4 | D.W. | |
| CHECKED | APPROVED | TITLE |
| DATE | WEIGHT | 18-30" JS ASSEMBLY |
| 6/07 | 94.62 LB. | DRAWING NUMBER |
| | | JS-400-A-002 |





NOTES:

1. PAINT COMPONENTS AS FOLLOWS:

RED (RUSTOLEUM #A25-6626):
BASE WELDMENT

YELLOW (RUSTOLEUM #M15-4502):
CENTER TUBE WELDMENT

BLACK:

LIFT PAD WELDMENT (NOT THREADS)

2. ENSURE THAT ALL PARTS ARE
ASSEMBLED PRIOR TO SHIPPING.

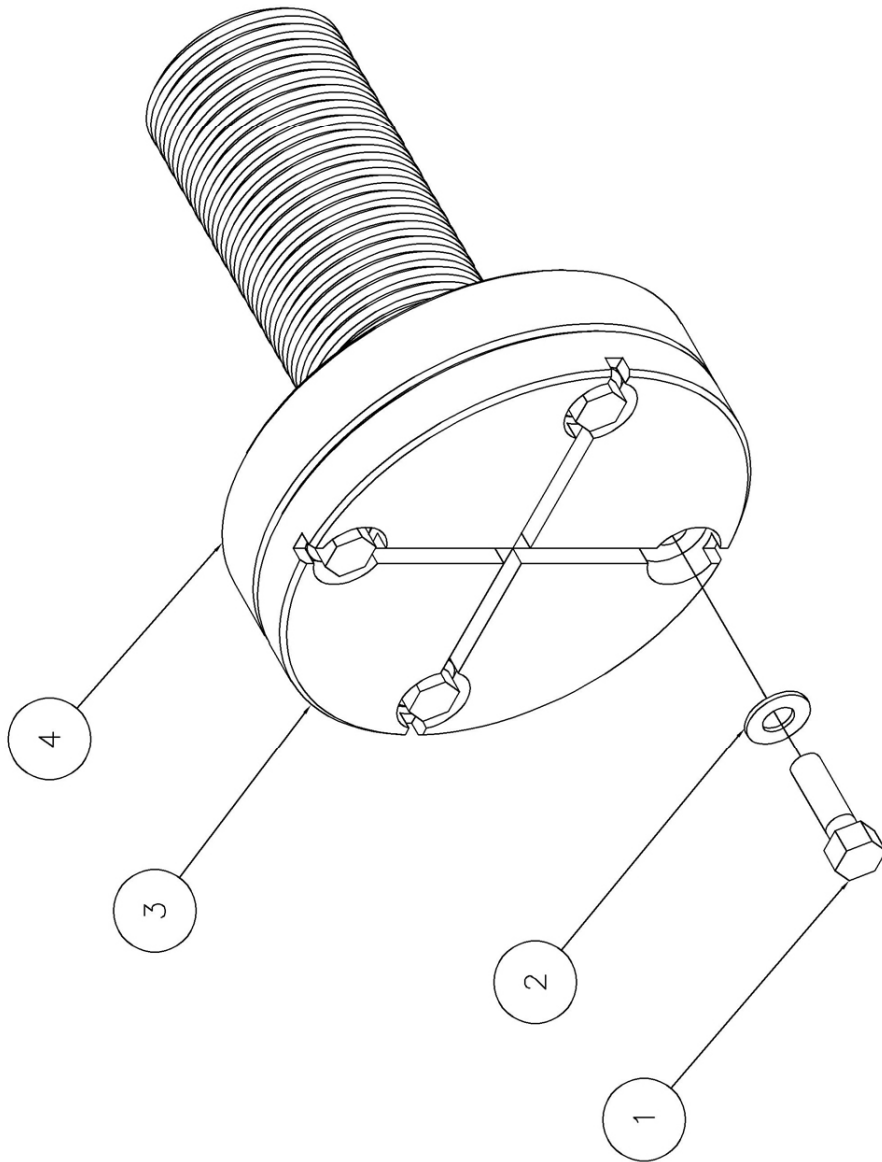
3. ENSURE THAT THREADED LIFT PAD
WELDMENT SPINS IN AND OUT OF
CENTER TUBE WELDMENT FREELY
WITHOUT BINDING. RUN DIE DOWN
THREADS AND CLEAN THEM TO ENSURE
SMOOTH ROTATION THRU FULL STROKE.

PG 1 OF 2

| ITEM | NAME | DESCRIPTION | QTY | VENDOR | NOTE | MASS | PRICE |
|------|--------------|-----------------------------|-----|--------|----------|------|--------|
| 5 | JS-400-A-001 | 18-30" JS Lift Pad Assembly | 1 | | | | 21.040 |
| 4 | JS-400-W-002 | 18-30" Slider Tube Weldment | 1 | | | | 17.440 |
| 3 | JS-400-W-003 | JS-1830 Weldment | 1 | | | | 41.500 |
| 2 | JS-000-A-002 | Hitch Pin Assembly | 1 | | | | 3.000 |
| 1 | JS-400-P-008 | 18-30" JS Decal, JS-1830-18 | 1 | | 4" x 11" | | 0.000 |

C-size

| NOTICE OF CONFIDENTIAL INFORMATION | | | | Parts List | | | | MOHAWK RESOURCES LTD. | | | |
|---|--|--|--|--|--|--|--|--|--|--|--|
| INFORMATION CONTAINED HEREIN IS CONFIDENTIAL AND PROPERTY OF MOHAWK RESOURCES LTD. WHERE DRAWING IS FURNISHED TO OTHERS, IT SHALL BE USED SOLELY FOR PURPOSES OF INSPECTION, INSTALLATION, OR MAINTENANCE. INFORMATION SHALL NOT BE REPRODUCED OR DISCLOSED BY THE RECIPIENT FOR ANY OTHER PURPOSES WHATSOEVER. | | | | TOLERANCES: FRACTIONAL DECIMAL DECIMAL 0.000 0.005 | | | | DRAWN D.M. | | | |
| | | | | 1. REMOVE ALL SHARP CORNERS & EDGES. 2. UNLESS OTHERWISE SPECIFIED, SURFACE FINISH TO BE 125 RMS. 3. WELDING MEDIUM SHALL CONFORM TO AWS SPECIFICATIONS TO E-70XX ELECTRODES OR E-70T1 CODE 5.3 FLUX CORE WIRE ONLY. | | | | CHECKED | | | |
| | | | | FILE NAME JS-400-A-002 | | | | DATE 6/07 | | | |
| | | | | NEXT ASSEMBLY | | | | WEIGHT 94.62 LB. | | | |
| | | | | | | | | TITLE 18-30" JS ASSEMBLY | | | |
| | | | | | | | | FROM DRAWING NUMBER JS-400-A-002 | | | |



| | | | | | | | |
|--|--|--|--|-----------------------------------|--|--|--|
| NOTES: | | | | Parts List | | | |
| 1. REMOVE ALL SHARP CORNERS & EDGES. | | | | TOLERANCES: | | | |
| 2. UNLESS OTHERWISE SPECIFIED, SURFACE FINISH TO BE 125 RMS. | | | | FRACTIONAL ± .030 | | | |
| 3. WELDING MEDIUM SHALL CONFORM TO AWS SPECIFICATIONS TO E-70XX ELECTRODES OR E-7011 CODE S3 FLUX CORE WIRE ONLY. | | | | DECIMAL ± .000 | | | |
| | | | | FILE NAME JS-400-A-001 | | | |
| NOTICE OF CONFIDENTIAL INFORMATION | | | | NEXT ASSEMBLY | | | |
| INFORMATION CONTAINED HEREIN IS CONFIDENTIAL AND PROPERTY OF MOHAWK RESOURCES LTD., WHERE DRAWING IS FURNISHED TO OTHERS IT SHALL BE USED SOLELY FOR PURPOSES OF INSPECTION, INSTALLATION, REPAIRS AND MAINTENANCE OF THE EQUIPMENT AND NOT BE DISCLOSED BY THE RECIPIENT FOR ANY OTHER PURPOSES WHATSOEVER. | | | | DATE 6/07 | | | |
| | | | | WEIGHT 27.04 LB. | | | |
| | | | | FROM | | | |
| | | | | DRAWING NUMBER JS-400-A-001 | | | |
| | | | | TITLE 18-30" JS LIFT PAD ASSEMBLY | | | |
| | | | | MOHAWK RESOURCES LTD. | | | |
| | | | | SCALE 1:1 | | | |
| | | | | DRAWN D.M. | | | |
| | | | | CHECKED | | | |
| | | | | APPROVED | | | |
| | | | | QTY | | | |
| | | | | MATERIAL | | | |
| | | | | NOTE | | | |
| | | | | MASS | | | |
| | | | | 15.27 | | | |
| | | | | 1 | | | |
| | | | | 6" Dia x 3/4 Thk | | | |
| | | | | 5.50 | | | |
| | | | | 0.01 | | | |
| | | | | 0.06 | | | |
| | | | | MASS | | | |
| | | | | 15.27 | | | |

⚠ CAUTION



The diagram shows a car on a lift. Two safety stands are positioned under the front and rear of the car. Two arrows point to the safety stands, indicating they should be used when removing or installing heavy components.

Always use safety stands when removing or installing heavy components. ©

⚠ WARNING



The diagram shows a car supported by a lift locking device or 4 stands. Two arrows point to the lift locking device and the word "or" is written below them, indicating that either method can be used to support the vehicle.

Use lift locking device or 4 stands to support vehicle. ©

MOHAWK *Because Quality Lasts Forever*



Model A-7

Model A-7

The A-7 is a 7,000 lb. capacity asymmetric lift that allows full opening of all vehicle doors as well as total undercar/underdash access, thanks to Mohawk's unique "clear floor" design. Low 4" arms accommodate all imports and low-riding sports cars. Includes both 3" and 6" adapters.

Parallelogram Lifts

Standard models from 36,000 to 100,000 lb. capacities with track lengths from 26'-48'. Available in surface or flush mount with full under-vehicle access for all trucks, buses and heavy equipment.



Model 50-26-S



Model TP-16

Models System I, LC-12, LMF-12, TP-16, TP-18, TP-26 & TP-30

These 10,000 to 30,000 lb. capacity models are the ideal heavy-duty lifts for up to Class VI trucks. Mohawk's unique "clear floor" design makes these the perfect lifts for all fleet applications. Truck adapters are also standard equipment.

MP-Series Mobile Column

Mohawk's mobile columns are capable of lifting 32,000 to 240,000 lbs. All columns operate together, individually or can be divided into separate pairs. Adjustable lifting forks accommodate the widest range of vehicles. No wheel reducer sleeves needed.



Model MP-18-006



Model TR-75

TR-Series Ramp Style Lifts

Standard models from 19,000 to 120,000 lbs. for total under-vehicle access. Available in 20', 25', and 30' long runways. Completely operated by a single technician and feature fully interlocked, redundant safety systems.



Mohawk Resources, LTD. • P.O. Box 110
65 Vrooman Ave • Amsterdam, NY 12010
(800) 833-2006 or (518) 842-1431
www.mohawklifts.com

SEND US YOUR PHOTOS!

MOHAWK IS ALWAYS INTERESTED IN SEEING HOW YOUR LIFTS ARE USED. WE HAVE CREATED AN ON-LINE PHOTO DATABASE FOR CUSTOMERS TO VIEW OUR LIFTS IN USE.



VISIT WWW.MOHAWKLIFTS.COM/PR/ AND MAYBE WE CAN ADD YOUR PHOTOS TO OUR COLLECTION.
(JPG FORMATS PREFERRED)

E-MAIL YOUR PHOTOS AND COMMENTS TO:
PHOTOS@MOHAWKLIFTS.COM

BEST REGARDS & HAPPY LIFTING!

YOUR FRIENDS AT MOHAWK LIFTS