

MOHAWK

MADE IN THE USA

JS-Series Jack Stand

JS-3047-20 - 20,000 LB. CAPACITY -

JS-3047-30 - 30,000 LB. CAPACITY -

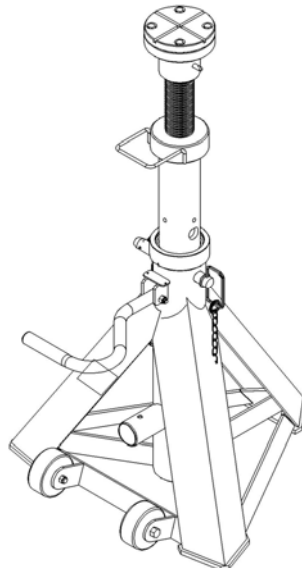
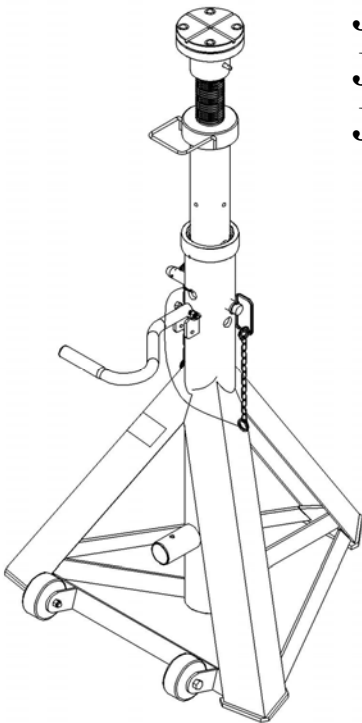
JS-3047-40 - 40,000 LB. CAPACITY -

JS-4775-20 - 20,000 LB. CAPACITY -

JS-4775-30 - 30,000 LB. CAPACITY -

JS-4775-40 - 40,000 LB. CAPACITY -

Conforms
To
ASME
PASE-2014



- ☒ OPERATION
- ☒ MAINTENANCE
- ☒ PARTS



MOHAWK LIFTS, LLC.

VROOMAN AVE

PO BOX 110

AMSTERDAM, NY 12010

TOLL FREE: 1-800-833-2006

LOCAL: 1-518-842-1431

FAX: 1-518-842-1289

INTERNET: WWW.MOHAWKLIFTS.COM

E-MAIL: SERVICE@MOHAWKLIFTS.COM

Jack Stands 20_30_40 9-15-2016.doc

Rev Date 9-15-2016

Part #601-800-263

**READ MANUAL
THOROUGHLY BEFORE
INSTALLING,
OPERATING OR SERVICING
THIS LIFT !!**

**Deliver these instructions to lift
owner/user/employer along with
other instructional materials
furnished with this lift.**

MOHAWK WARRANTIES

EFFECTIVE DATE: 12/1/2015*

READ THIS WARRANTY IN ITS ENTIRETY

GENERAL WARRANTY INFORMATION:

MOHAWK'S OBLIGATION UNDER THIS WARRANTY IS LIMITED TO REPAIRING OR REPLACING ANY PART OR PARTS RETURNED TO THIS FACTORY, TRANSPORTATION CHARGES PREPAID BY CUSTOMER WITH AUTHORIZED RETURN (RGA), WHICH PROVE UPON INSPECTION TO BE DEFECTIVE AND WHICH HAVE NOT BEEN MISUSED. DAMAGE OR FAILURE TO ANY PART DUE TO FREIGHT DAMAGE OR LACK OF REQUIRED REGULAR DOCUMENTED MAINTENANCE IS NOT COVERED UNDER THIS WARRANTY. ALL WARRANTY CLAIMS MUST BE PERFORMED IN ACCORDANCE TO MOHAWK'S WARRANTY PARTS RETURN POLICY (CONTACT MOHAWK'S SERVICE DEPARTMENT FOR MORE INFORMATION).

THIS WARRANTY DOES NOT COVER MIS-DIAGNOSING OF UNIT OR PARTS RETURNED THAT ARE NON-DEFECTIVE. THIS WARRANTY DOES NOT COVER ANY CONSEQUENTIAL OR INCIDENTAL DAMAGES INCLUDING, BUT NOT LIMITED TO, LOST REVENUES OR BUSINESS HARM. THIS EQUIPMENT HAS BEEN DESIGNED FOR USE IN NORMAL VEHICLE MAINTENANCE APPLICATIONS. A SPECIFIC INDIVIDUAL WARRANTY MUST BE ISSUED FOR UNITS THAT DEVIATE FROM INTENDED USAGE, SUCH AS HIGH CYCLE USAGE IN INDUSTRIAL APPLICATIONS, OR USAGE IN EXTREMELY ABUSIVE ENVIRONMENTS. MOHAWK RESERVES THE RIGHT TO DECLINE RESPONSIBILITY WHEN REPAIRS OR MODIFICATIONS HAVE BEEN MADE OR ATTEMPTED BY OTHERS WITHOUT WRITTEN AUTHORIZATION FROM MOHAWK LIFTS, LLC.. THIS WARRANTY DOES NOT COVER LABOR OR TRANSPORTATION. THIS WARRANTY DOES NOT COVER DOWNTIME EXPENSES INCURRED WHEN UNIT IS IN REPAIR. **THE LIFT MUST BE REGISTERED WITHIN 30 DAYS OF INSTALLATION BY MAILING SUPPLIED WARRANTY REGISTRATION CARD TO MOHAWK AND MUST BE SIGNED BY A LICENSED ELECTRICIAN.** THE MODEL NUMBER AND SERIAL NUMBER OF THE EQUIPMENT MUST BE FURNISHED WITH ALL WARRANTY CLAIMS. THIS WARRANTY STATEMENT CONTAINS THE ENTIRE AGREEMENT BETWEEN MOHAWK LIFTS, LLC. AND THE PURCHASER UNLESS OTHERWISE SPECIFICALLY EXPRESSED IN WRITING. THIS NON-TRANSFERABLE WARRANTY APPLIES TO THE ORIGINAL PURCHASER ONLY.

THIS WARRANTY DOES NOT COVER NORMAL SURFACE WEAR ITEMS, ITEMS SUBJECT TO ABRASION, OR ITEMS USED IN A CORROSIVE ENVIRONMENT. SOME ITEMS ON LIFT ARE SUBJECT TO NORMAL "WEAR AND TEAR" AND ARE NOT COVERED UNDER THIS WARRANTY.

STRUCTURAL AND MECHANICAL COMPONENTS (ALL LIFTS):

STRUCTURAL AND MECHANICAL COMPONENTS OF THIS UNIT ARE GUARANTEED FOR THE BELOW STATED TIME FRAME, SPECIFIC TO MODEL LISTED, FROM THE DATE OF SHIPMENT FROM FACTORY, AGAINST DEFECTS IN WORKMANSHIP AND/OR MATERIALS WHEN LIFT IS INSTALLED AND USED ACCORDING TO SPECIFICATIONS.

25-YEARS STRUCTURAL / 10 YEARS MECHANICAL: TWO-POST MODELS A-7, SYSTEM IA-10, LC-12, LMF-12, TP-16, TP-18, TP-20, TP-26, TP-30. STRUCTURAL ITEMS COVERED INCLUDE LEG, CARRIAGE, SWING ARM AND SLIDER WELDMENTS (EXCLUDING NORMAL WEAR AREAS AS STATED ABOVE). MECHANICAL ITEMS COVERED INCLUDE ROLLER BEARINGS AND LIFTING CHAIN.

5-YEAR: MODELS TL-7.

3-YEAR: MODELS TR-19, TR-25, FL-25, TR-30, TR-33, TR-35, TR-50, TR-75, TR-110, TR-120, MP-SERIES LIFTS.

2-YEAR: MODELS PARALLELOGRAM SERIES LIFTS.

1-YEAR: MODELS TD-1000, TD-2000, CT-1000, USL-6000.

POWER UNIT (ALL LIFTS):

ALL POWER UNIT COMPONENTS (MOTOR, PUMP AND RESERVOIR) ARE GUARANTEED FOR TWO YEARS FOR PARTS, FROM THE DATE OF SHIPMENT FROM FACTORY, AGAINST DEFECTS IN WORKMANSHIP AND/OR MATERIALS WHEN THE LIFT IS INSTALLED, WIRED BY A LICENSED ELECTRICIAN AND USED ACCORDING TO SPECIFICATIONS.

ELECTRICAL COMPONENTS (ALL LIFTS):

ALL ELECTRICAL COMPONENTS (EXCLUDING MOTOR) ARE GUARANTEED FOR ONE YEAR FOR PARTS, FROM THE DATE OF SHIPMENT FROM FACTORY, AGAINST DEFECTS IN WORKMANSHIP AND/OR MATERIALS WHEN THE LIFT IS INSTALLED AND USED ACCORDING TO SPECIFICATIONS. SEE WARRANTY EXCEPTIONS SECTION FOR BATTERIES.

PNEUMATIC-AIR COMPONENTS (ALL LIFTS):

ALL PNEUMATIC (AIR) COMPONENTS (I.E. AIR CYLINDERS AND POPPET AIR VALVES) ARE GUARANTEED FOR ONE YEAR FOR PARTS, FROM THE DATE OF SHIPMENT FROM FACTORY, AGAINST DEFECTS IN WORKMANSHIP AND/OR MATERIALS WHEN THE LIFT IS INSTALLED AND USED ACCORDING TO SPECIFICATIONS. COMPONENTS IN A PNEUMATIC SYSTEM THAT ARE NOT PROPERLY REGULATED, LUBRICATED AND CONDITIONED WITH AN AIR DRYING SYSTEM ARE NOT COVERED UNDER WARRANTY.

HYDRAULIC COMPONENTS (ALL LIFTS):

EXCLUDING CYLINDERS AND PUMPS (COVERED IN OTHER SECTIONS), ALL HYDRAULIC COMPONENTS (I.E. VALVES AND FITTINGS) ARE GUARANTEED FOR ONE YEAR FOR PARTS, FROM THE DATE OF SHIPMENT FROM FACTORY, AGAINST DEFECTS IN WORKMANSHIP AND/OR MATERIALS WHEN THE LIFT IS INSTALLED AND USED ACCORDING TO SPECIFICATIONS.

HYDRAULIC CYLINDERS (MODEL SPECIFIC LIFTS):

THE FOLLOWING MODELS ARE GUARANTEED FOR 5 YEARS (PARTS ONLY), FROM DATE OF SHIPMENT FROM FACTORY, FOR HYDRAULIC CYLINDERS, AGAINST DEFECTS IN WORKMANSHIP AND/OR MATERIALS WHEN THE LIFT IS INSTALLED AND USED ACCORDING TO SPECIFICATIONS: TWO-POST MODELS A-7, SYSTEM IA-10, LC-12, LMF-12, TP-16, TP-18, TP-20, TP-26, TP-30.

ALL OTHER MODELS ARE GUARANTEED FOR TWO YEARS (PARTS ONLY), FROM THE DATE OF SHIPMENT FROM FACTORY, FOR HYDRAULIC CYLINDERS, AGAINST DEFECTS IN WORKMANSHIP AND/OR MATERIALS WHEN THE LIFT IS INSTALLED AND USED ACCORDING TO SPECIFICATIONS (EXCLUDING USL-6000, WHICH IS ONE YEAR).

THE "EXTENDED LIFETIME CYLINDER SEAL WARRANTY" (BELOW) IS APPLICABLE TO THE FOLLOWING MOHAWK LIFTS ONLY: TWO-POST MODELS A-7, SYSTEM IA-10, LC-12, LMF-12, TP-16, TP-18, TP-20, TP-26, TP-30. SEE MOHAWK'S "EXTENDED LIFETIME CYLINDER SEAL WARRANTY" FOR SPECIFIC WARRANTY PROVISIONS FOR HYDRAULIC CYLINDERS.

THE "EXTENDED LIFETIME CYLINDER SEAL WARRANTY" IS AS FOLLOWS:

AS THE ORIGINAL PURCHASER OF A MOHAWK LIFT MANUFACTURED BY MOHAWK LIFTS, LLC. YOU ARE ENTITLED TO AN EXTENDED CYLINDER SEAL WARRANTY.

MOHAWK'S OBLIGATION UNDER THIS WARRANTY IS LIMITED TO SUPPLYING MODEL SPECIFIC CYLINDER SEALS. THE CUSTOMER IS RESPONSIBLE FOR SHIPPING AND HANDLING OF THE SEALS. MOHAWK IS NOT RESPONSIBLE/LIABLE FOR THE REBUILD OF CYLINDERS BY OTHERS. THIS WARRANTY IS NON-TRANSFERABLE AND RUNS TO THE ORIGINAL PURCHASER ONLY.

STANDARD OPTIONS (ALL LIFTS):

ALL STANDARD OPTIONS OF THIS UNIT ARE GUARANTEED FOR ONE YEAR FOR PARTS, FROM THE DATE OF SHIPMENT FROM FACTORY, AGAINST DEFECTS IN WORKMANSHIP AND/OR MATERIALS WHEN LIFT IS INSTALLED AND USED ACCORDING TO SPECIFICATIONS.

CUSTOM LIFTS AND CUSTOM OPTIONS:

ALL "CUSTOM" LIFTS AND/OR "CUSTOM" OPTIONS ARE GUARANTEED FOR ONE YEAR FOR PARTS, FROM THE DATE OF SHIPMENT FROM FACTORY, AGAINST DEFECTS IN WORKMANSHIP AND/OR MATERIALS WHEN LIFT IS INSTALLED AND USED ACCORDING TO SPECIFICATIONS.

WARRANTY EXCEPTIONS (ALL LIFTS):

ADJUSTMENTS: THIS WARRANTY DOES NOT COVER CASUAL AND ROUTINE ADJUSTMENTS SUCH AS, BUT NOT LIMITED TO: FITTINGS, SENSORS AND SWITCHES, ANCHOR BOLT RE-TIGHTENING, OR ANY SHIMMING OR ADJUSTMENTS REQUIRED DURING A PROPER AND PROFESSIONAL INSTALLATION BY A QUALIFIED INSTALLER.

MAINTENANCE AND INSPECTIONS: IF THIS UNIT IS NOT MAINTAINED AND INSPECTED IN ACCORDANCE TO THE RELEVANT SECTIONS IN THE USERS MANUAL FOR THIS SPECIFIC MODEL, WARRANTY IS VOID. OSHA, ANSI AND MOHAWK REQUIRE THAT RECORDS MUST BE MAINTAINED TO PROVE THAT INSPECTIONS AND MAINTENANCE OF THIS UNIT HAVE BEEN ROUTINELY PERFORMED BY QUALIFIED INDIVIDUALS.

ABUSE: IF THIS UNIT IS FOUND TO BE OVERLOADED (PURPOSELY OR UNKNOWINGLY), USED IN A SITUATION BEYOND ITS INTENDED FUNCTION, NOT MAINTAINED & INSPECTED REGULARLY, USED IN AN ABUSIVE ENVIRONMENT OR BEYOND NORMAL SHOP USAGE, THIS WARRANTY IS VOID IN ITS ENTIRETY.

NON-EXISTENT PROBLEMS: FOR SERVICE VISITS, PART REPLACEMENTS, LABOR, ETC. FOR PARTS FOUND TO BE NON-DEFECTIVE, OR FOR A UNIT DIS-FUNCTION THAT DOES NOT EXIST, IT IS THE LIFT OWNER THAT REQUESTED THE SERVICE VISIT WHO BEARS THE RESPONSIBILITY OF ALL RELATED EXPENSES.

BATTERIES: ALL BATTERIES CARRY THE BATTERY MANUFACTURER'S WARRANTY. MAINTENANCE REQUIREMENTS AND ABUSE PROVISIONS ARE AS STATED BY THE BATTERY MANUFACTURER. REFER TO BATTERY MANUFACTURER'S WARRANTY.

SPECIAL/MODIFIED INSTALLATIONS: THIS WARRANTY DOES NOT COVER "NON-TRADITIONAL" INSTALLATIONS. INSTALLATIONS ARE TO BE DONE ACCORDING TO SPECIFICATIONS, OR THE WARRANTY IS VOID.

WEARABLE COMPONENTS: SOME ITEMS ON LIFTS ARE SUBJECT TO NORMAL "WEAR AND TEAR" AND ARE NOT COVERED UNDER THIS WARRANTY.

NON-VEHICLE / RE-PURPOSED LIFTS: THIS WARRANTY DOES NOT COVER LIFTS THAT ARE "RE-PURPOSED" TO RAISE AND LOWER EQUIPMENT THAT ARE NOT CONSIDERED VEHICLES.

*** THIS WARRANTY SUPERSEDES ALL OTHER WARRANTY POLICIES PREVIOUSLY STATED AND IN ALL OTHER MOHAWK PRODUCT SPECIFIC LITERATURE (MANUALS, BROCHURES, ETC.).**

GENERAL INSTRUCTIONS & WARNINGS:

STUDY, UNDERSTAND, AND FOLLOW ALL INSTRUCTIONS BEFORE OPERATING THIS DEVICE. RETAIN THESE INSTRUCTIONS FOR FUTURE REFERENCE.

IF THE OPERATOR IS NOT FLUENT IN ENGLISH, THE PRODUCT INSTRUCTIONS AND WARNINGS SHALL BE READ TO AND DISCUSSED WITH THE OPERATOR IN THE OPERATOR'S NATIVE LANGUAGE BY THE PURCHASE/OWNER OR HIS DESIGNEE, MAKING SURE THE OPERATOR COMPREHENDS ITS CONTENTS.

THE EQUIPMENT DESCRIBED IN THIS MANUAL COULD BE POTENTIALLY DANGEROUS IF IMPROPERLY OR CARELESSLY OPERATED. FOR THE PROTECTION OF ALL PERSONS AND EQUIPMENT, ONLY COMPETENTLY TRAINED OPERATORS WHO ARE CRITICALLY AWARE OF THE PROPER OPERATING PROCEDURES, POTENTIAL DANGERS, AND SPECIFIC APPLICATION OF THIS EQUIPMENT SHOULD BE ALLOWED TO USE THIS EQUIPMENT AT ANY TIME.

BECAUSE OF POTENTIAL HAZARDS ASSOCIATED WITH THIS TYPE OF EQUIPMENT, NO ALTERATIONS SHALL BE MADE TO THIS PRODUCT.

THE USE OF PORTABLE AUTOMOTIVE LIFTING DEVICES IS SUBJECT TO CERTAIN HAZARDS THAT CANNOT BE PREVENTED BY MECHANICAL MEANS, BUT ONLY BY THE EXERCISE OF INTELLIGENCE, CARE, AND COMMON SENSE. IT IS THEREFORE ESSENTIAL TO HAVE OWNERS AND PERSONNEL INVOLVED IN THE USE AND OPERATION OF EQUIPMENT WHO ARE CAREFUL, COMPETENT, TRAINED, AND QUALIFIED IN THE SAFE OPERATION OF THE EQUIPMENT AND ITS PROPER USE.

FAILURE TO HEED ALL WARNINGS CONTAINED IN THIS MANUAL MAY RESULT IN PERSONAL INJURY AND/OR PROPERTY DAMAGE.

ALL WARRANTIES APPLICABLE TO THIS EQUIPMENT ARE CONTINGENT ON STRICT ADHERENCE TO THE OPERATION AND MAINTENANCE PROCEDURES IN THIS MANUAL.

RECOMMENDATIONS BY THE INDIVIDUAL USER OR USING ORGANIZATION FOR IMPROVING THIS PUBLICATION OR ANY ASPECT OF THE PRODUCT ARE ENCOURAGED AND SHOULD BE FORWARDED IN WRITING TO:

MOHAWK LIFTS, LLC.
PRODUCT IMPROVEMENTS
VROOMAN AVE.
PO BOX 110
AMSTERDAM, NY 12010

OPERATION INSTRUCTIONS & WARNINGS:

DO NOT EXCEED RATED CAPACITY. OVERLOADING CAN CAUSE DAMAGE TO OR FAILURE OF THE STAND.

USE STANDS ON HARD LEVEL SURFACE CAPABLE OF SUSTAINING THE LOAD. USING STANDS ON SURFACES THAT ARE NOT HARD OR LEVEL MAY RESULT IN POSSIBLE LOSS OF LOAD.

LOCATE SADDLE AT VEHICLE MANUFACTURER DESIGNATED SUPPORT POINTS. ALWAYS CONSULT THE VEHICLE LIFTING GUIDE FOR THE PROPER LIFTING POINTS ON ANY VEHICLE. THESE GUIDES ARE AVAILABLE FROM THE VEHICLE MANUFACTURERS.

PLACE LOAD IN THE CENTER OF THE SADDLE ONLY.

USE A MINIMUM OF FOUR STANDS TO SUPPORT AND STABILIZE A VEHICLE, AND A MINIMUM OF TWO ADDITIONAL STANDS FOR EACH ADDITIONAL AXLE ASSEMBLY, BEFORE STARTING REPAIRS.

DO NOT APPLY HORIZONTAL FORCES OR LARGE TORQUE LOADS TO THE VEHICLE WHILE SUPPORTED BY STANDS.

MOHAWK JACK STANDS

DO NOT START ENGINE WHILE SUPPORTED ON STANDS.

DO NOT USE STANDS TO SIMULTANEOUSLY SUPPORT BOTH ENDS OF A VEHICLE.

ENSURE STANDS ARE STABLE AND VEHICLE IS BALANCED BEFORE LOWERING ONTO STANDS.

CAREFULLY LOWER VEHICLE ONTO ALL STANDS UTILIZED SIMULTANEOUSLY.

ONLY ATTACHMENTS, RESTRAINTS OR ADAPTERS SUPPLIED BY THE MANUFACTURER SHALL BE USED.

NO ALTERATIONS SHALL BE MADE TO THIS PRODUCT.

ALWAYS ADJUST HEIGHT OF JACK STAND UP TO LOAD WITH PAD SCREWED ALL THE WAY DOWN FIRST. THEN RAISE CENTER SLIDER UP TO HIGHEST PIN SETTING, THEN SPIN PAD UPWARD TO LOAD.

ALWAYS ENSURE THAT HITCH PIN IS FULLY INSERTED INTO HOLES THROUGH ENTIRE BASE FRAME AND THAT HAIR PIN IS RETAINING OTHER SIDE.

THE CENTER TUBE IS SPRING LOADED TO ASSIST IN RAISING TUBE TO DESIRED HEIGHT. USE CAUTION WHEN PULLING HITCH PIN. BUILT UP SPRING FORCE MAY RAISE OR LOWER CENTER TUBE SUDDENLY.

KEEP HANDS AND BODY CLEAR OF ANY POTENTIAL PINCH POINTS.

FAILURE TO HEED THESE WARNINGS MAY RESULT IN PERSONAL INJURY AND/OR PROPERTY DAMAGE.

MAINTENANCE AND INSPECTION INSTRUCTIONS & WARNINGS:

THIS PRODUCT SHALL BE MAINTAINED IN ACCORDANCE WITH THE FOLLOWING MAINTENANCE INSTRUCTIONS.

VISUAL INSPECTION SHALL BE MADE BEFORE EACH USE OF THIS UNIT BY CHECKING FOR ABNORMAL CONDITIONS SUCH AS CRACKED WELDS, LEAKS, AND DAMAGED, LOOSE, OR MISSING PARTS.

OTHER INSPECTIONS SHALL BE MADE PER OPERATING INSTRUCTIONS ABOVE.

EACH UNIT SHALL BE INSPECTED IMMEDIATELY IF THE LIFT IS BELIEVED TO HAVE BEEN SUBJECTED TO AN ABNORMAL LOAD OR SHOCK. IT IS RECOMMENDED THAT THIS INSPECTION BE MADE BY A MANUFACTURER'S OR SUPPLIER'S AUTHORIZED REPAIR FACILITY.

PERIODICALLY LUBRICATE THREADED PORTION OF LIFT PAD WITH WD-40 OR OTHER LIGHT LUBRICANT.

OWNERS AND/OR OPERATORS SHOULD BE AWARE THAT REPAIR OF THIS EQUIPMENT MAY REQUIRE SPECIALIZED KNOWLEDGE AND FACILITIES. IT IS RECOMMENDED THAT AN ANNUAL INSPECTION OF THIS UNIT BE MADE BY A MANUFACTURER'S OR SUPPLIER'S AUTHORIZED REPAIR FACILITY AND THAT ANY DEFECTIVE PARTS, DECALS, OR WARNING LABELS BE REPLACED WITH MANUFACTURER'S OR SUPPLIER'S SPECIFIED PARTS. A LIST OF AUTHORIZED REPAIR FACILITIES IS AVAILABLE FROM THE MANUFACTURER OR SUPPLIER.

ANY UNIT THAT APPEARS TO BE DAMAGED IN ANY WAY, IS FOUND TO BE WORN, OR OPERATES ABNORMALLY **SHALL BE REMOVED FROM SERVICE UNTIL REPAIRED**. IT IS RECOMMENDED THAT NECESSARY REPAIRS BE MADE BY THE MANUFACTURER'S OR SUPPLIER'S AUTHORIZED REPAIR FACILITY IF REPAIRS ARE PERMITTED BY THE MANUFACTURER OR SUPPLIER.

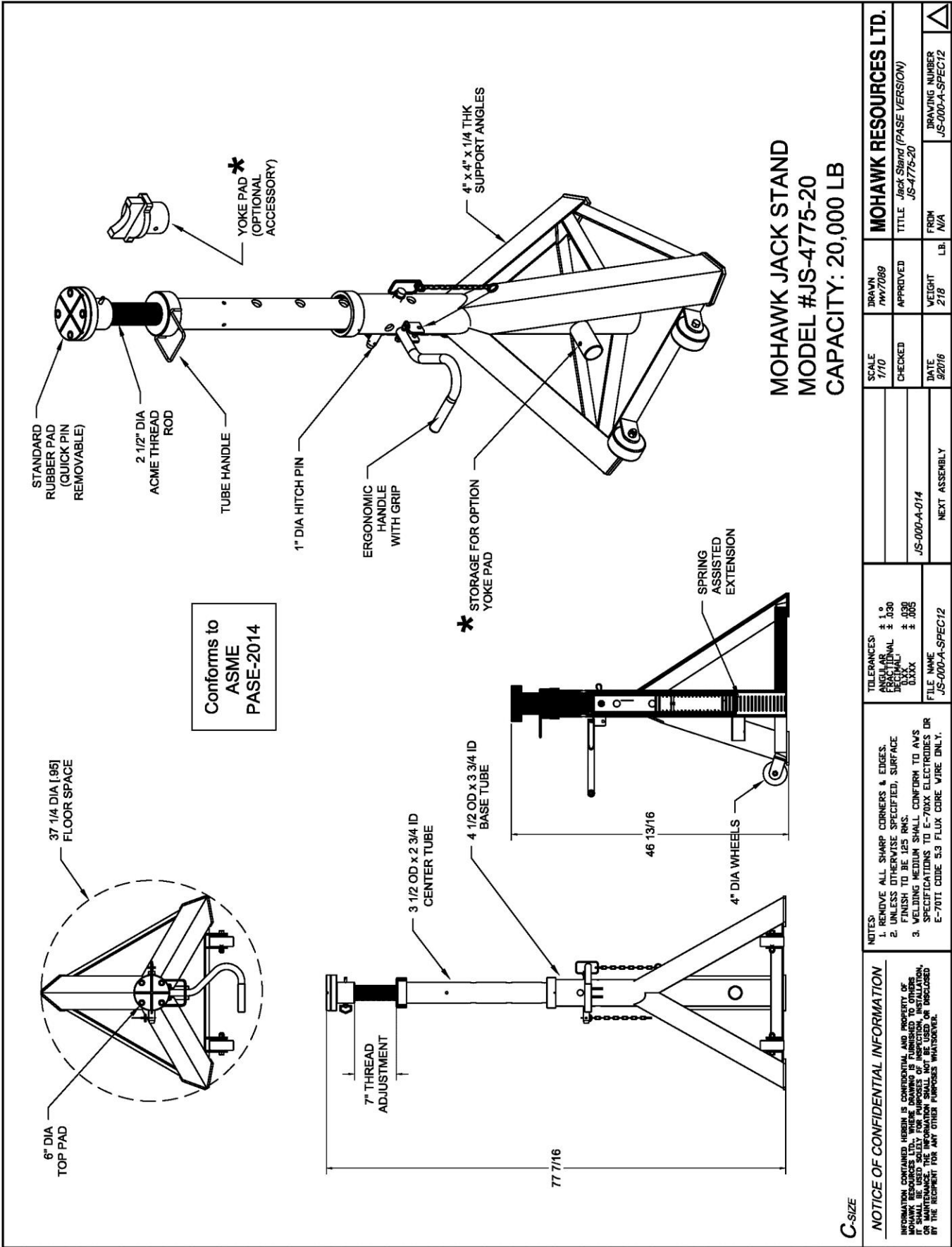
MOHAWK

**MODEL JS-4775-20,
JS-4775-30
& JS-4775-40**

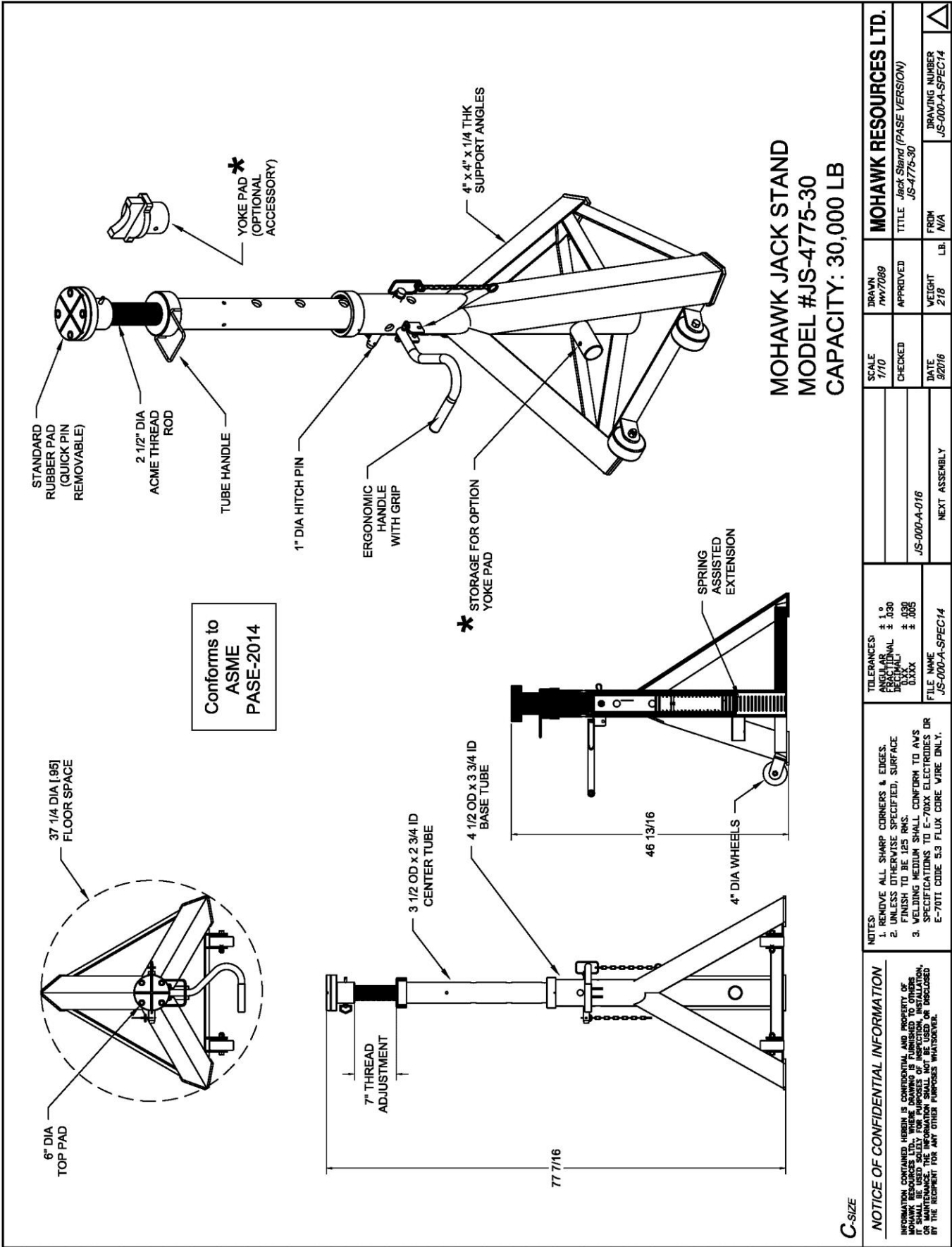
DRAWINGS & PARTS

MOHAWK LIFTS, LLC.

VROOMAN AVE.
PO BOX 110
AMSTERDAM, NY 12010
TOLL FREE: 1-800-833-2006
LOCAL: 1-518-842-1431
FAX: 1-518-842-1289
INTERNET: WWW.MOHAWKLIFTS.COM
E-MAIL: SERVICE@MOHAWKLIFTS.

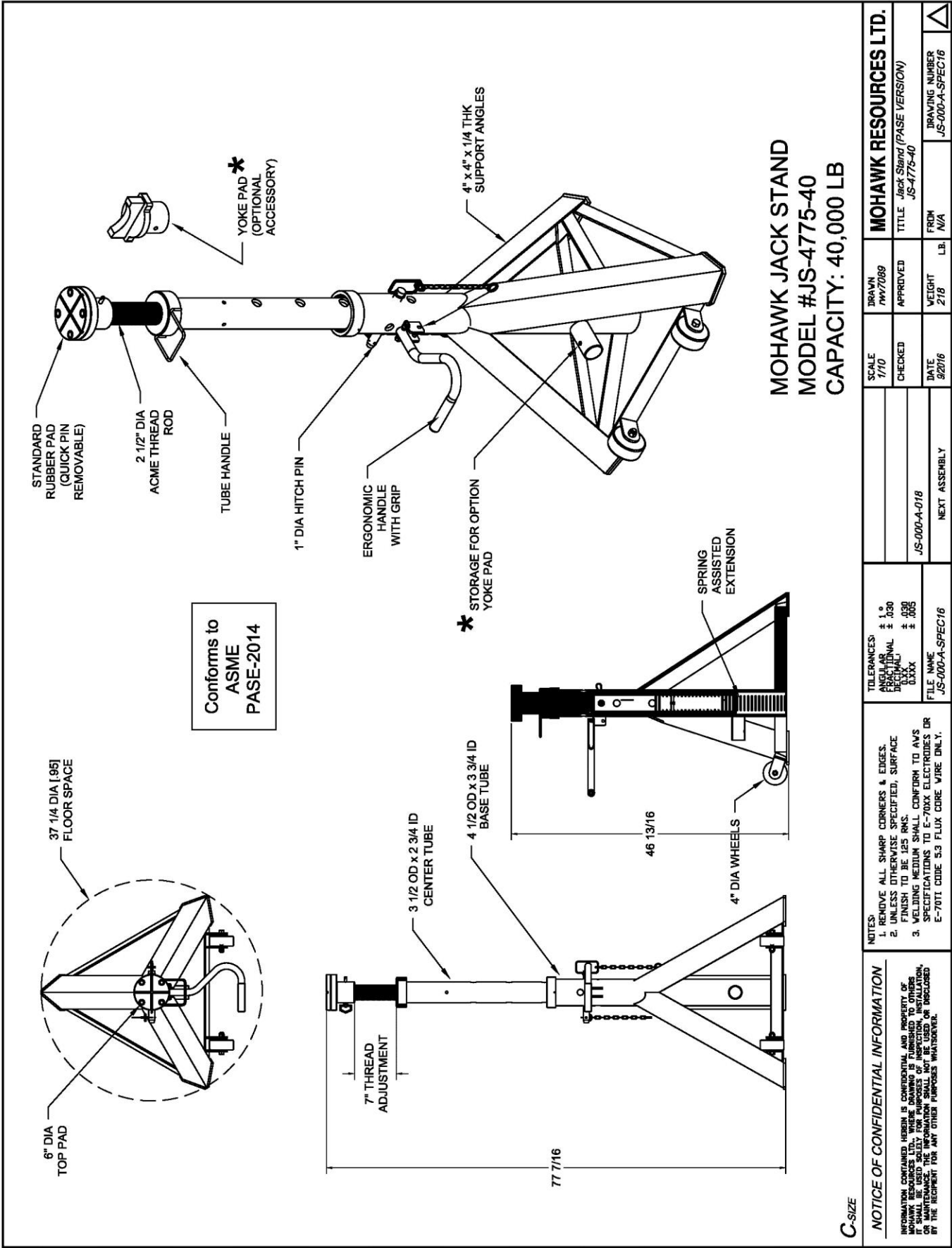


C-SIZE



C-SIZE

NOTICE OF CONFIDENTIAL INFORMATION		NOTES		TOLERANCES		DRAWN		MOHAWK RESOURCES LTD.	
INFORMATION CONTAINED HEREIN IS CONFIDENTIAL AND PROPERTY OF MOHAWK RESOURCES LTD. WHERE DRAWING IS FURNISHED TO OTHERS IT SHALL BE USED SOLELY FOR PURPOSES OF INSPECTION, INSTALLATION, REPAIR, OR MAINTENANCE OF THE EQUIPMENT FOR WHICH IT WAS DESIGNED OR DISCLOSED BY THE RECIPIENT FOR ANY OTHER PURPOSES WITHOUT WRITTEN PERMISSION OF MOHAWK RESOURCES LTD.		1. REMOVE ALL SHARP CORNERS & EDGES. 2. UNLESS OTHERWISE SPECIFIED, SURFACE FINISH TO BE 125 RMS. 3. WELDING MEDIUM SHALL CONFORM TO AWS SPECIFICATIONS TO E-70XX ELECTRODES OR E-70T1 CODE 5.3 FLUX CORE WIRE ONLY.		FRACTIONAL ± .030 DECIMAL ± .005 HOLE ± .005		SCALE		TITLE	
						1/10		JS-4775-30	
						CHECKED		APPROVED	
FILE NAME		NEXT ASSEMBLY		DATE		WEIGHT		DRAWING NUMBER	
JS-000-A-016				9/2016		218		JS-000-A-SPEC14	

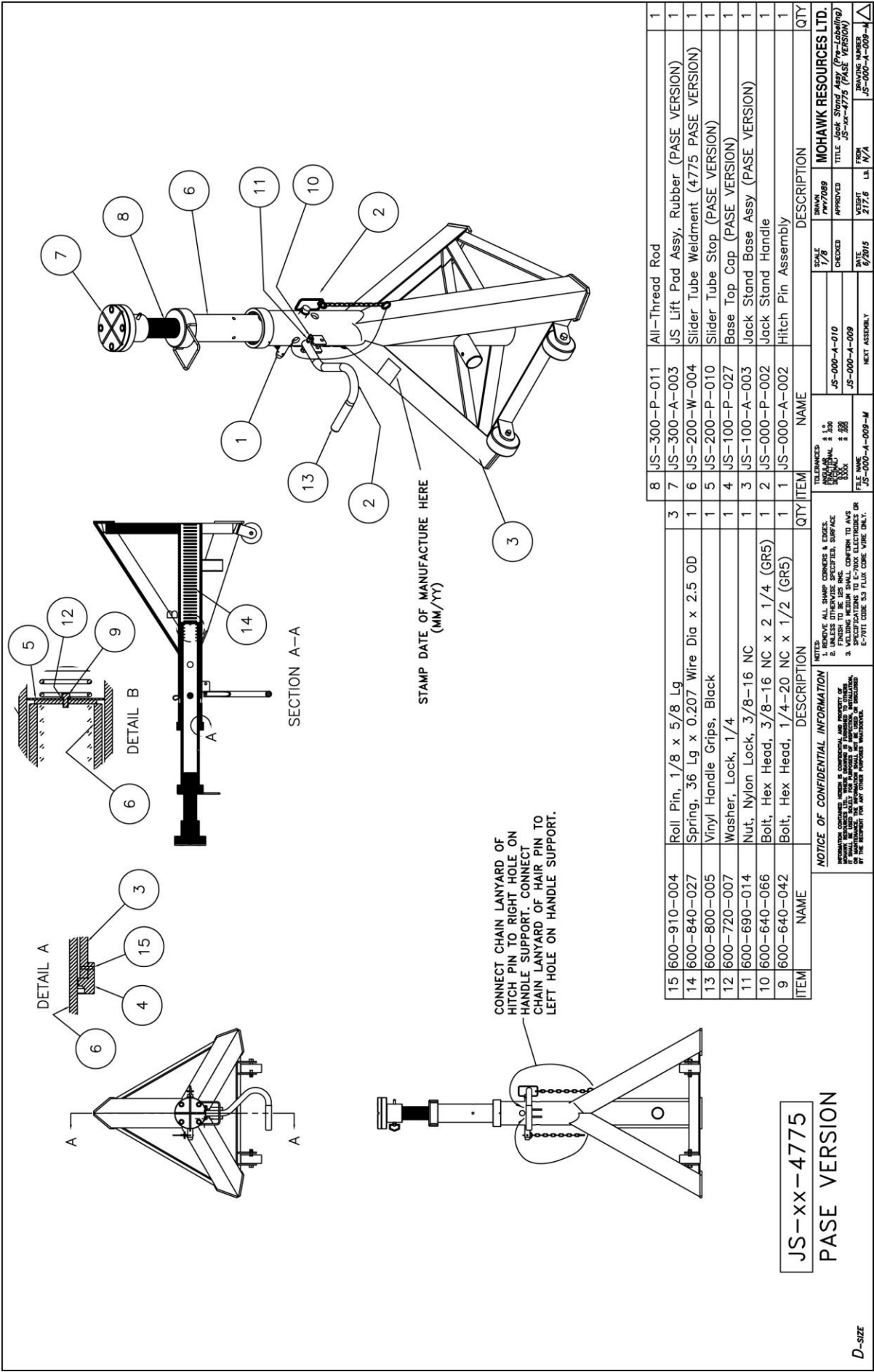


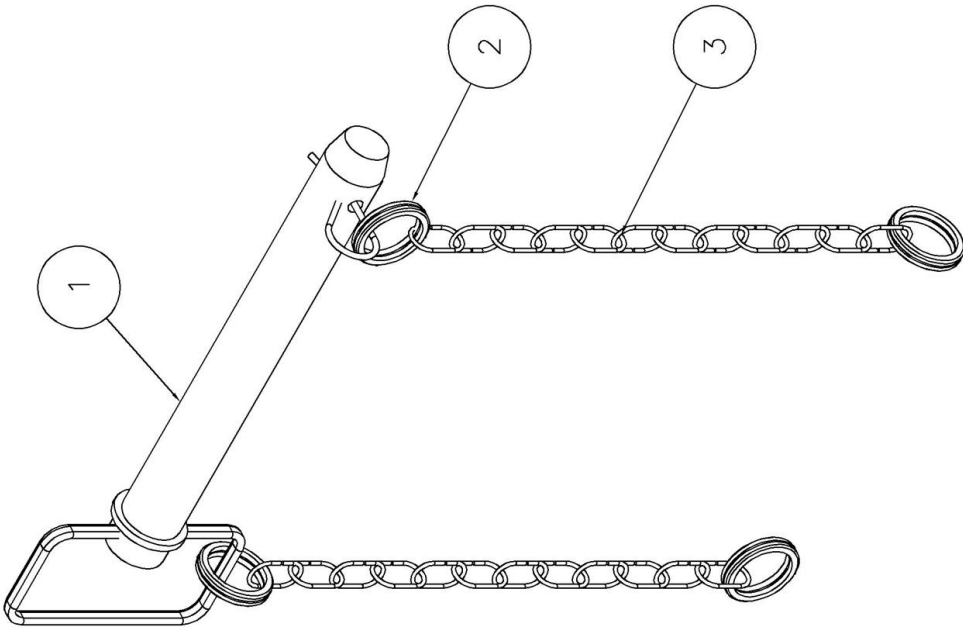
C-SIZE

NOTICE OF CONFIDENTIAL INFORMATION

INFORMATION CONTAINED HEREIN IS CONFIDENTIAL AND PROPERTY OF MOHAWK RESOURCES LTD. WHERE DRAWING IS FURNISHED TO OTHERS, IT SHALL BE USED SOLELY FOR PURPOSES OF INSPECTION, INSTALLATION, REPAIR, OR MAINTENANCE OF THE EQUIPMENT FOR WHICH IT WAS DESIGNED, AND NOT FOR ANY OTHER PURPOSES WHATSOEVER.

MOHAWK RESOURCES LTD.	
TITLE	Jack Stand (PASE VERSION)
MODEL	JS-4775-40
DATE	9/2016
WEIGHT	218 LB.
FROM	N/A
DRAWING NUMBER	JS-000-A-SPEC16

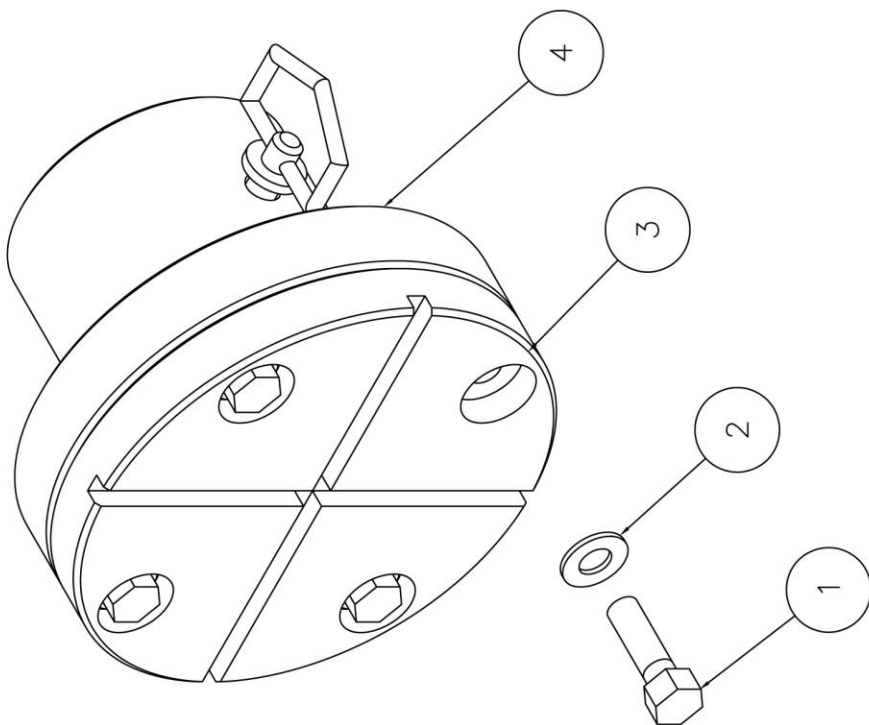




3	JS-000-P-401	Double Loop Coil Chain, Zinc Plated, Size 5 x 12 Links	2	0.250
2	600-900-011	Split Ring, 1.25 OD x 1" ID, Zinc Plated	4	0.100
1	600-900-009	Hitch Pin, 1 Dia x 6 3/4 Usable Lg w/ Hairpin	1	2.000
ITEM	NAME	DESCRIPTION	QTY	MASS
Parts List				

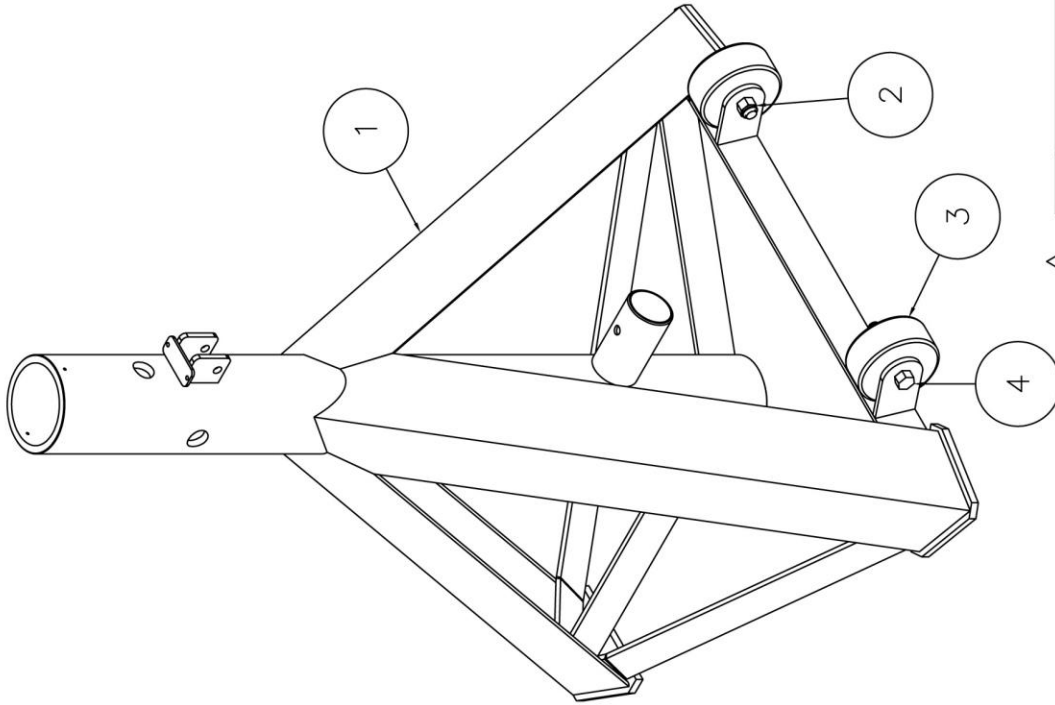
C-SIZE

NOTICE OF CONFIDENTIAL INFORMATION		TOLERANCES:		MOHAWK RESOURCES LTD.	
INFORMATION CONTAINED HEREIN IS CONFIDENTIAL AND PROPERTY OF MOHAWK RESOURCES LTD. IT SHALL BE USED SOLELY FOR PURPOSES OF INSPECTION, INSTALLATION, OR MAINTENANCE. THE INFORMATION SHALL NOT BE USED OR DISCLOSED BY THE RECIPIENT FOR ANY OTHER PURPOSES WHATSOEVER.		1. REMOVE ALL SHARP CORNERS & EDGES.		SCALE	DRAWN
		2. UNLESS OTHERWISE SPECIFIED, SURFACE FINISH TO BE 125 RMS.		3/4	rwv7089
		3. WELDING MEDIUM SHALL CONFORM TO AWS SPECIFICATIONS TO E-70XX ELECTRODES OR E-70T1 CODE 5.3 FLUX CORE WIRE ONLY.		CHECKED	APPROVED
FILE NAME		DATE		TITLE	
JS-000-A-002		9/15/2005		Jack Stand Hitch Pin Assembly	
NEXT ASSEMBLY		WEIGHT		FROM	DRAWING NUMBER
		3		N/A	JS-000-A-002



C-SIZE				NOTICE OF CONFIDENTIAL INFORMATION				NOTES: 1. REMOVE ALL SHARP CORNERS & EDGES. 2. UNLESS OTHERWISE SPECIFIED, SURFACE FINISH TO BE 125 RMS. 3. WELDING MEDIUM SHALL CONFORM TO AWS SPECIFICATIONS TO E-70XX ELECTRODES OR E-70T1 CODE 5.3 FLUX CORE WIRE ONLY.				INFORMATION CONTAINED HEREIN IS CONFIDENTIAL AND PROPERTY OF MOHAWK RESOURCES LTD., WHERE DRAWING IS FURNISHED TO OTHERS FOR INSPECTION, INSTALLATION, OR REPAIR. THIS DRAWING IS NOT TO BE REPRODUCED OR COPIED BY THE RECIPIENT FOR ANY OTHER PURPOSES WHATSOEVER.			
ITEM		NAME		TOLERANCES: ANGULAR ± 1° FRACTIONAL ± .030 DECIMAL ± .005 0.XXX ± .005		SCALE 1=1		DRAWN rwy7089		MOHAWK RESOURCES LTD.		PASE VERSION			
5		600-900-019		Hitch Pin, 3/8 Dia x 4" Usable		1		1		JS Lift Pad Assy, Rubber		DRAWING NUMBER JS-300-A-003			
4		JS-300-W-007		Pad Weldment (PASE VERSION)		1		1							
3		JS-300-P-003		Pad, Rubber		1		1							
2		600-710-009		Washer, Flat, 3/8		4		4							
1		600-640-083		Bolt, Hex Head, 3/8-16 NC x 1 1/4" (GR5)		4		4							
ITEM		NAME		DESCRIPTION		QTY									

#	DESCRIPTION	DATE	APPROVED
A	1. Item 2 was incorrectly 600-690-014 (3/8)	07/30/2015	rwv7089
	2. Item 4 was 600-640-018 (qb2)		



PASE VERSION

4	600-640-242	Bolt, Hex Head, 1/2-13 NC x 3 1/4" (GR5)	2
3	600-920-012	Wheel, 4" Dia x 1/2 Dia Axle x 1 1/2 Wide	2
2	600-690-009	Nut, Nylon Lock, 1/2-13 NC	2
1	JS-100-W-008	Jack Stand Base Weldment (PASE)	1
ITEM	NAME	DESCRIPTION	QTY

SCALE	1"=1'0"	DRAWN	rwv7089	MOHAWK RESOURCES LTD.
CHECKED		APPROVED		TITLE
DATE	6/2015	WEIGHT	126.6	FROM
FILE NAME	JS-100-A-003	LB.	n/a	DRAWING NUMBER
				JS-100-A-003

NOTES:	TOLERANCES:
1. REMOVE ALL SHARP CORNERS & EDGES.	ANGULAR ± 1°
2. UNLESS OTHERWISE SPECIFIED, SURFACE FINISH TO BE 125 RMS.	FRACTIONAL ± .030
3. WELDING MEDIUM SHALL CONFORM TO AWS SPECIFICATIONS TO E-70XX ELECTRODES OR E-70TT CODE S-3 FLUX CORE WIRE ONLY.	DECIMAL ± .005

NOTICE OF CONFIDENTIAL INFORMATION

INFORMATION CONTAINED HEREIN IS CONFIDENTIAL AND PROPERTY OF MOHAWK RESOURCES LTD. WHERE DRAWING IS FURNISHED TO OTHERS IT SHALL BE USED SOLELY FOR PURPOSES OF INSPECTION, INSTALLATION, REPAIR, OR MAINTENANCE OF THE EQUIPMENT IDENTIFIED HEREIN. IT IS NOT TO BE REPRODUCED OR TRANSMITTED IN ANY FORM OR BY ANY MEANS, ELECTRONIC OR MECHANICAL, INCLUDING PHOTOCOPYING, RECORDING, OR BY ANY INFORMATION STORAGE AND RETRIEVAL SYSTEM, WITHOUT THE WRITTEN PERMISSION OF MOHAWK RESOURCES LTD.

C-SIZE

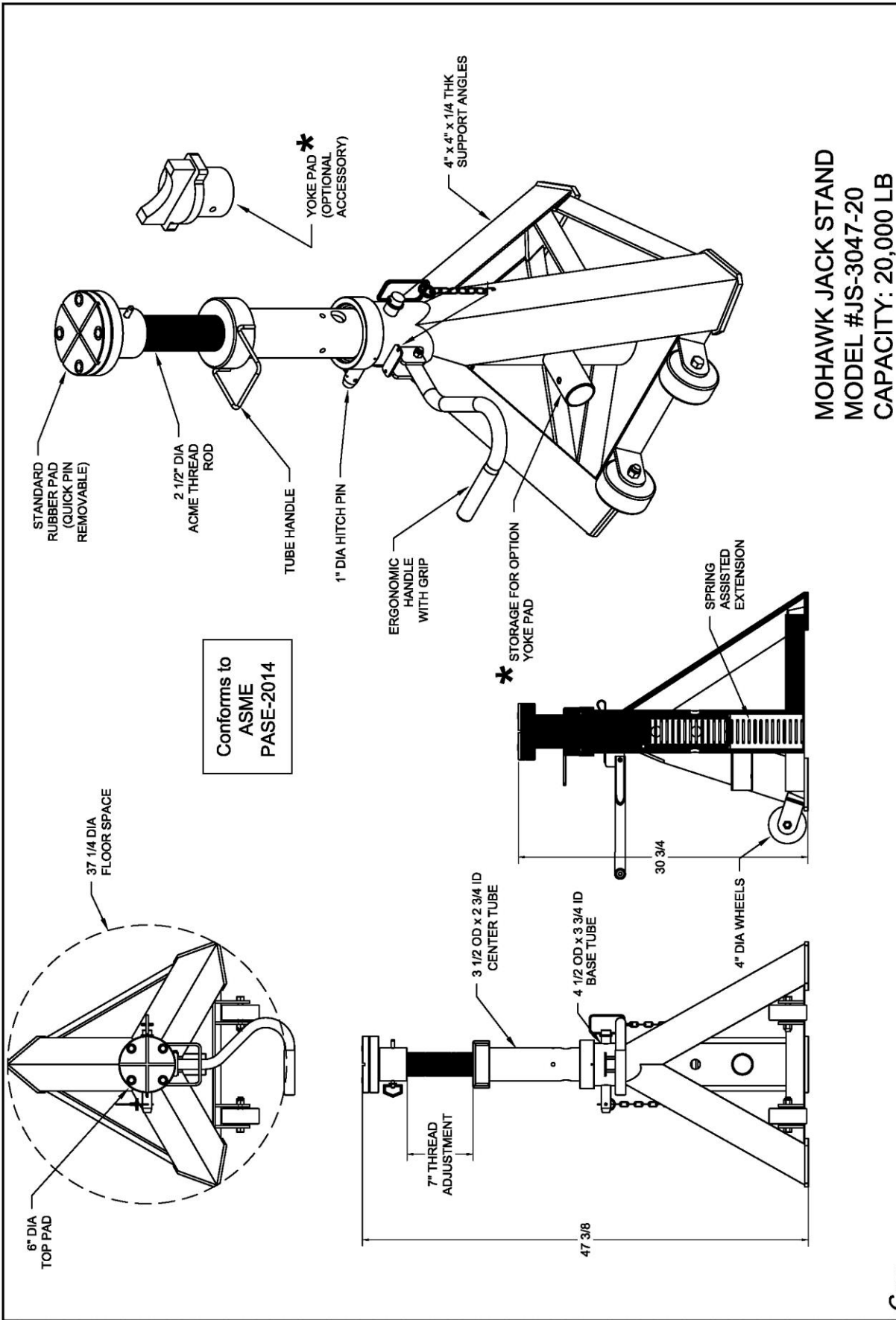
MOHAWK

MODEL JS-3047-20, JS-3047-30 & JS-3047-40

DRAWINGS & PARTS

MOHAWK LIFTS, LLC.

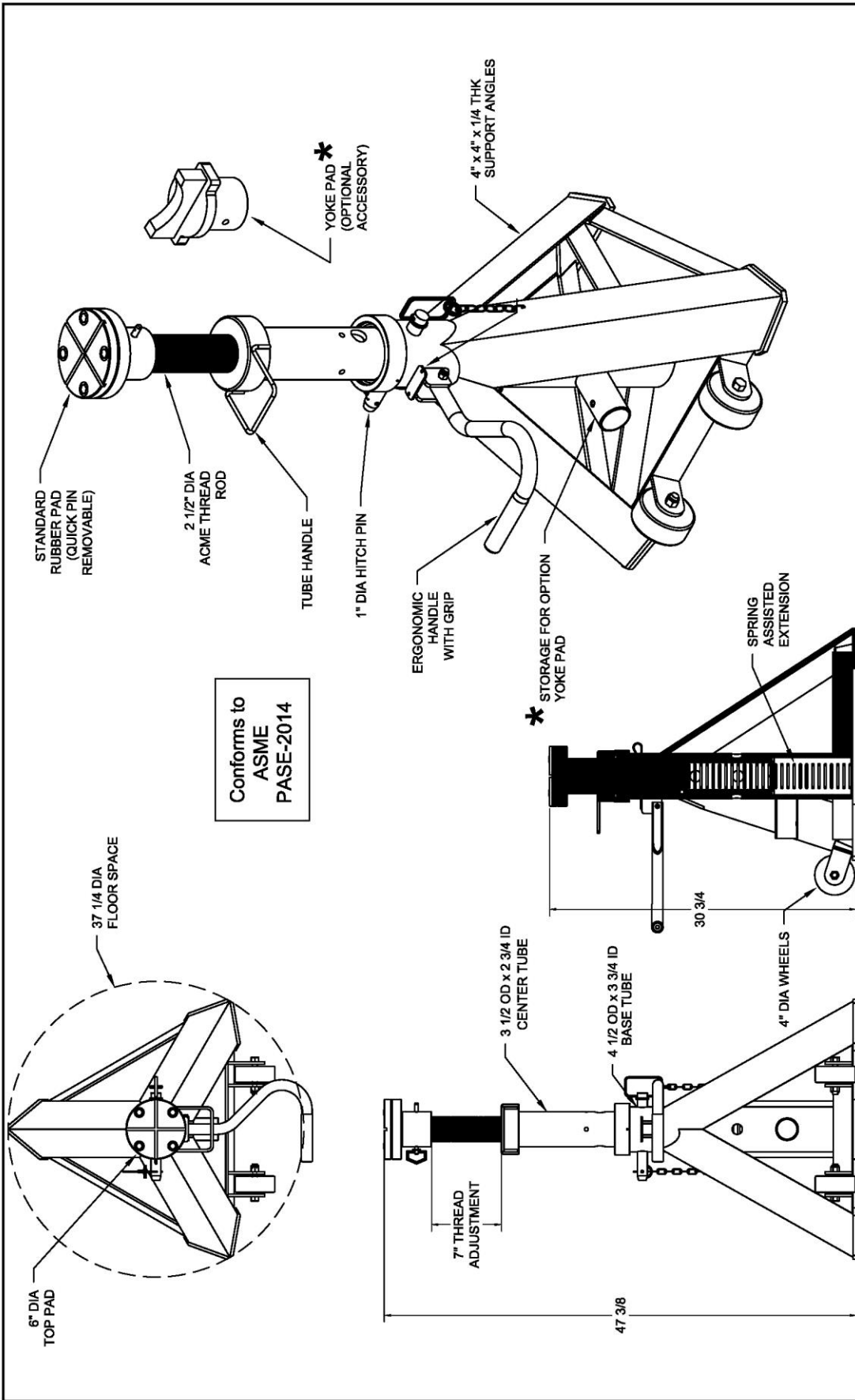
VROOMAN AVE.
PO BOX 110
AMSTERDAM, NY 12010
TOLL FREE: 1-800-833-2006
LOCAL: 1-518-842-1431
FAX: 1-518-842-1289
INTERNET: WWW.MOHAWKLIFTS.COM
E-MAIL: SERVICE@MOHAWKLIFTS.



MOHAWK JACK STAND
MODEL #JS-3047-20
CAPACITY: 20,000 LB

C-SIZE

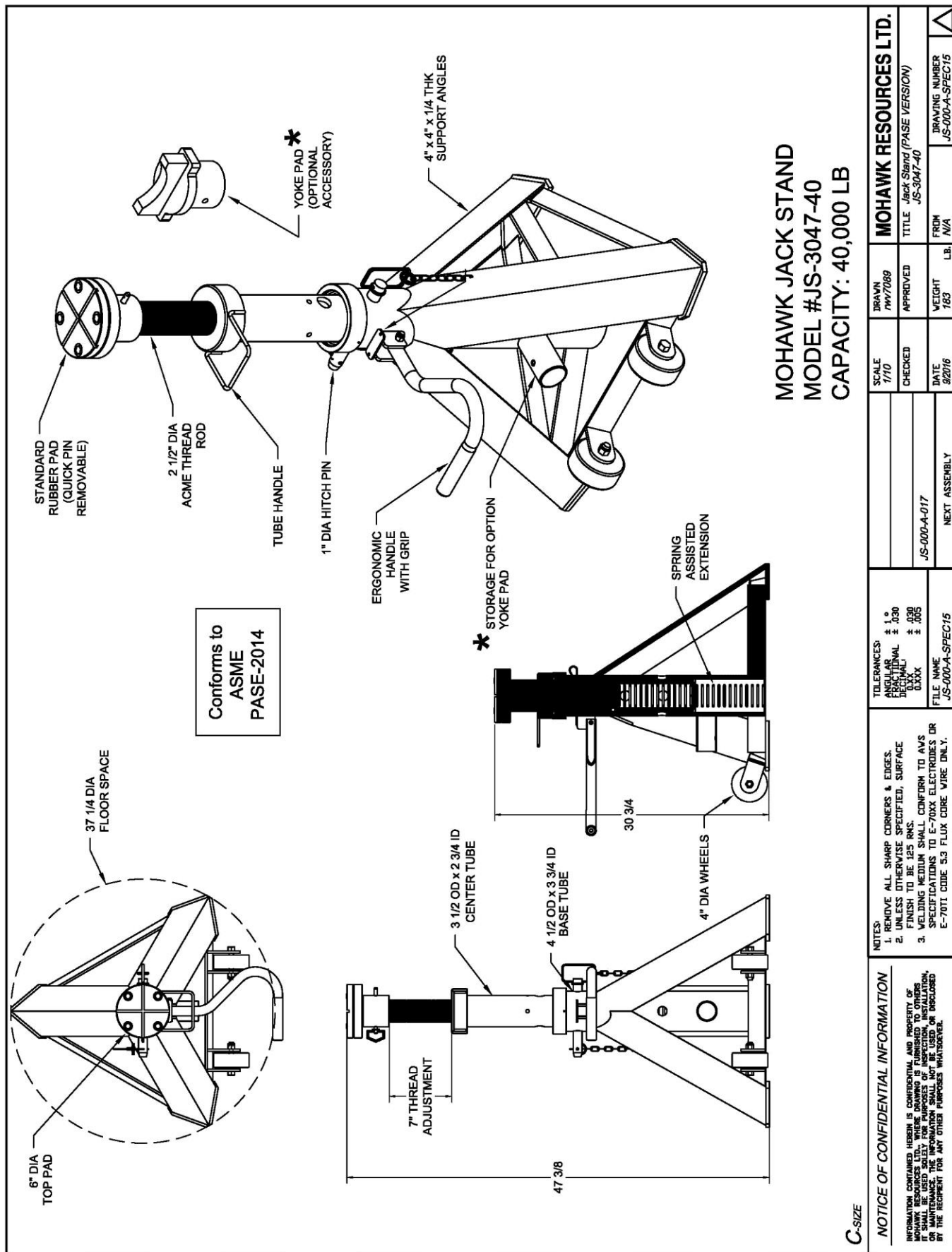
NOTICE OF CONFIDENTIAL INFORMATION		NOTES		TOLERANCES		DRAWN		MOHAWK RESOURCES LTD.	
INFORMATION CONTAINED HEREIN IS CONFIDENTIAL AND PROPERTY OF MOHAWK RESOURCES LTD. WHERE DRAWING IS FURNISHED TO OTHERS IT SHALL BE USED SOLELY FOR PURPOSES OF INSPECTION, INSTALLATION, REPAIR, OR MAINTENANCE OF THE EQUIPMENT FOR WHICH IT WAS DESIGNED BY THE RECIPIENT FOR ANY OTHER PURPOSES WITHOUT WRITING.		1. REMOVE ALL SHARP CORNERS & EDGES. 2. UNLESS OTHERWISE SPECIFIED, SURFACE FINISH TO BE 125 RMS. 3. WELDING MEDIUM SHALL CONFORM TO AWS SPECIFICATIONS TO E-70XX ELECTRODES OR E-70T1 CODE 5.3 FLUX CORE WIRE UNLT.		FRACTIONAL DECIMAL DIPLEX ± .005 ± .005 ± .005		SCALE		TITLE	
						CHECKED		APPROVED	
						DATE		FROM	
FILE NAME		NEXT ASSEMBLY		DATE		WEIGHT		DRAWING NUMBER	
JS-000-A-013				JS-000-A-SPEC11		183		JS-000-A-SPEC11	
						LB.		N/A	

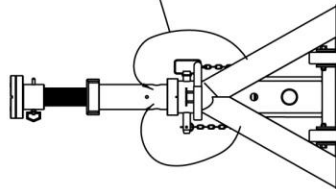


MOHAWK JACK STAND
MODEL #JS-3047-30
CAPACITY: 30,000 LB

C-SIZE

NOTICE OF CONFIDENTIAL INFORMATION		NOTES		TOLERANCES		DRAWN		MOHAWK RESOURCES LTD.	
INFORMATION CONTAINED HEREIN IS CONFIDENTIAL AND PROPERTY OF MOHAWK RESOURCES LTD. WHERE DRAWING IS FURNISHED TO OTHERS IT SHALL BE USED SOLELY FOR PURPOSES OF INSPECTION, INSTALLATION, OR REPAIR. THE INFORMATION SHALL NOT BE REPRODUCED, COPIED, OR DISCLOSED IN ANY MANNER FOR ANY OTHER PURPOSES WITHOUT WRITTEN PERMISSION OF MOHAWK RESOURCES LTD.		1. REMOVE ALL SHARP CORNERS & EDGES. 2. UNLESS OTHERWISE SPECIFIED, SURFACE FINISH TO BE 125 RMS. 3. WELDING MEDiums SHALL CONFORM TO AWS SPECIFICATIONS TO E-70XX ELECTRODES OR E-70T1 CODE 5.3 FLUX CORE WIRE ONLY.		ANGULAR ± 1° FRACTIONAL ± .030 DECIMAL ± .005 DUAL ± .005		SCALE		TITLE	
						CHECKED		APPROVED	
						DATE		FROM	
NEXT ASSEMBLY		FILE NAME		JS-000-A-SPEC13		WEIGHT		DRAWING NUMBER	
						183		JS-000-A-SPEC13	
						LB.		N/A	





CONNECT CHAIN LANYARD OF
HITCH PIN TO RIGHT HOLE ON
HANDLE SUPPORT. CONNECT
CHAIN LANYARD OF HAIR PIN TO
LEFT HOLE ON HANDLE SUPPORT.

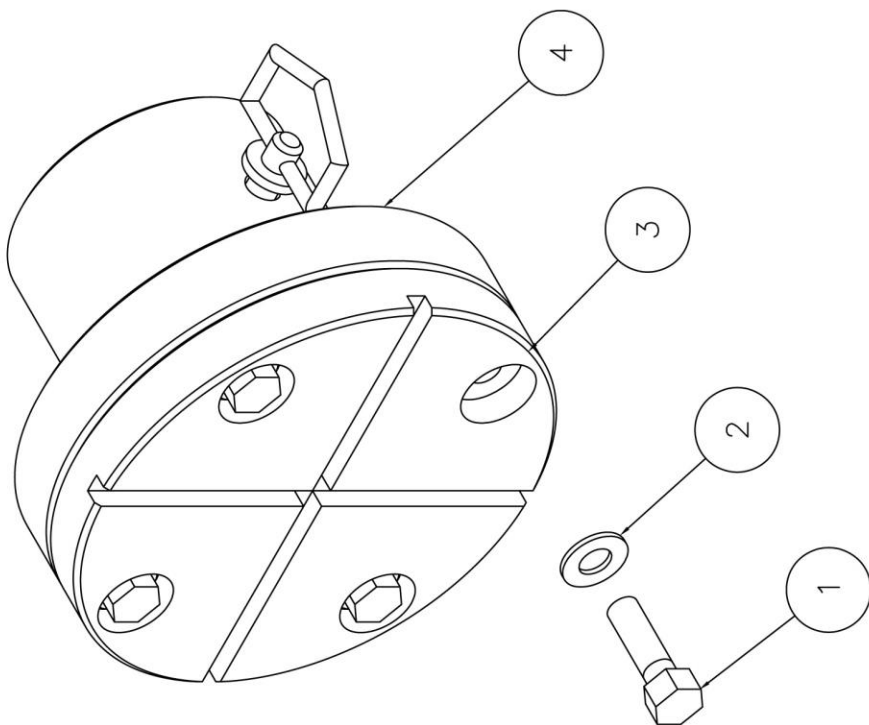
SECTION A-A

STAMP DATE OF
MANUFACTURE HERE
(MM/YY)

[illegible]

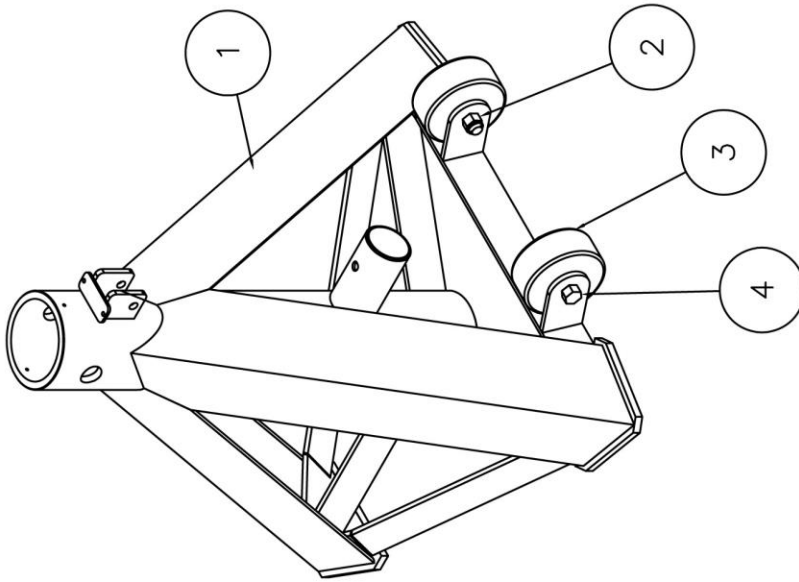
JS-xx-3047
 PASE VERSION

D-SIZE



C-SIZE				NOTES: 1. REMOVE ALL SHARP CORNERS & EDGES. 2. UNLESS OTHERWISE SPECIFIED, SURFACE FINISH TO BE 125 RMS. 3. WELDING MEDIUM SHALL CONFORM TO AWS SPECIFICATIONS TO E-70XX ELECTRODES OR E-70T1 CODE 5.3 FLUX CORE WIRE ONLY.				NOTICE OF CONFIDENTIAL INFORMATION INFORMATION CONTAINED HEREIN IS CONFIDENTIAL AND PROPERTY OF MOHAWK RESOURCES LTD., WHERE DRAWING IS FURNISHED TO OTHERS IT SHALL BE USED SOLELY FOR PURPOSES OF INSPECTION, INSTALLATION, OR REPAIR OF THE EQUIPMENT FOR WHICH IT WAS PROVIDED AND NOT BE DISCLOSED BY THE RECIPIENT FOR ANY OTHER PURPOSES WHATSOEVER.			
ITEM		NAME		TOLERANCES: ANGULAR ± 1° FRACTIONAL ± .030 DECIMAL ± .005 0.00XX		SCALE 1=1		DRAWN rwy7089		MOHAWK RESOURCES LTD.	
5		600-900-019		Hitch Pin, 3/8 Dia x 4" Usable		1		1		1	
4		JS-300-W-007		Pad Weldment (PASE VERSION)		1		1		1	
3		JS-300-P-003		Pad, Rubber		1		1		1	
2		600-710-009		Washer, Flat, 3/8		4		4		4	
1		600-640-083		Bolt, Hex Head, 3/8-16 NC x 1 1/4" (GR5)		4		4		4	
ITEM		NAME		DESCRIPTION		QTY		QTY		QTY	
5		600-900-019		Hitch Pin, 3/8 Dia x 4" Usable		1		1		1	
4		JS-300-W-007		Pad Weldment (PASE VERSION)		1		1		1	
3		JS-300-P-003		Pad, Rubber		1		1		1	
2		600-710-009		Washer, Flat, 3/8		4		4		4	
1		600-640-083		Bolt, Hex Head, 3/8-16 NC x 1 1/4" (GR5)		4		4		4	
ITEM		NAME		DESCRIPTION		QTY		QTY		QTY	
5		600-900-019		Hitch Pin, 3/8 Dia x 4" Usable		1		1		1	
4		JS-300-W-007		Pad Weldment (PASE VERSION)		1		1		1	
3		JS-300-P-003		Pad, Rubber		1		1		1	
2		600-710-009		Washer, Flat, 3/8		4		4		4	
1		600-640-083		Bolt, Hex Head, 3/8-16 NC x 1 1/4" (GR5)		4		4		4	
ITEM		NAME		DESCRIPTION		QTY		QTY		QTY	
5		600-900-019		Hitch Pin, 3/8 Dia x 4" Usable		1		1		1	
4		JS-300-W-007		Pad Weldment (PASE VERSION)		1		1		1	
3		JS-300-P-003		Pad, Rubber		1		1		1	
2		600-710-009		Washer, Flat, 3/8		4		4		4	
1		600-640-083		Bolt, Hex Head, 3/8-16 NC x 1 1/4" (GR5)		4		4		4	
ITEM		NAME		DESCRIPTION		QTY		QTY		QTY	
5		600-900-019		Hitch Pin, 3/8 Dia x 4" Usable		1		1		1	
4		JS-300-W-007		Pad Weldment (PASE VERSION)		1		1		1	
3		JS-300-P-003		Pad, Rubber		1		1		1	
2		600-710-009		Washer, Flat, 3/8		4		4		4	
1		600-640-083		Bolt, Hex Head, 3/8-16 NC x 1 1/4" (GR5)		4		4		4	
ITEM		NAME		DESCRIPTION		QTY		QTY		QTY	
5		600-900-019		Hitch Pin, 3/8 Dia x 4" Usable		1		1		1	
4		JS-300-W-007		Pad Weldment (PASE VERSION)		1		1		1	
3		JS-300-P-003		Pad, Rubber		1		1		1	
2		600-710-009		Washer, Flat, 3/8		4		4		4	
1		600-640-083		Bolt, Hex Head, 3/8-16 NC x 1 1/4" (GR5)		4		4		4	
ITEM		NAME		DESCRIPTION		QTY		QTY		QTY	
5		600-900-019		Hitch Pin, 3/8 Dia x 4" Usable		1		1		1	
4		JS-300-W-007		Pad Weldment (PASE VERSION)		1		1		1	
3		JS-300-P-003		Pad, Rubber		1		1		1	
2		600-710-009		Washer, Flat, 3/8		4		4		4	
1		600-640-083		Bolt, Hex Head, 3/8-16 NC x 1 1/4" (GR5)		4		4		4	
ITEM		NAME		DESCRIPTION		QTY		QTY		QTY	
5		600-900-019		Hitch Pin, 3/8 Dia x 4" Usable		1		1		1	
4		JS-300-W-007		Pad Weldment (PASE VERSION)		1		1		1	
3		JS-300-P-003		Pad, Rubber		1		1		1	
2		600-710-009		Washer, Flat, 3/8		4		4		4	
1		600-640-083		Bolt, Hex Head, 3/8-16 NC x 1 1/4" (GR5)		4		4		4	
ITEM		NAME		DESCRIPTION		QTY		QTY		QTY	
5		600-900-019		Hitch Pin, 3/8 Dia x 4" Usable		1		1		1	
4		JS-300-W-007		Pad Weldment (PASE VERSION)		1		1		1	
3		JS-300-P-003		Pad, Rubber		1		1		1	
2		600-710-009		Washer, Flat, 3/8		4		4		4	
1		600-640-083		Bolt, Hex Head, 3/8-16 NC x 1 1/4" (GR5)		4		4		4	
ITEM		NAME		DESCRIPTION		QTY		QTY		QTY	
5		600-900-019		Hitch Pin, 3/8 Dia x 4" Usable		1		1		1	
4		JS-300-W-007		Pad Weldment (PASE VERSION)		1		1		1	
3		JS-300-P-003		Pad, Rubber		1		1		1	
2		600-710-009		Washer, Flat, 3/8		4		4		4	
1		600-640-083		Bolt, Hex Head, 3/8-16 NC x 1 1/4" (GR5)		4		4		4	
ITEM		NAME		DESCRIPTION		QTY		QTY		QTY	
5		600-900-019		Hitch Pin, 3/8 Dia x 4" Usable		1		1		1	
4		JS-300-W-007		Pad Weldment (PASE VERSION)		1		1		1	
3		JS-300-P-003		Pad, Rubber		1		1		1	
2		600-710-009		Washer, Flat, 3/8		4		4		4	
1		600-640-083		Bolt, Hex Head, 3/8-16 NC x 1 1/4" (GR5)		4		4		4	
ITEM		NAME		DESCRIPTION		QTY		QTY		QTY	
5		600-900-019		Hitch Pin, 3/8 Dia x 4" Usable		1		1		1	
4		JS-300-W-007		Pad Weldment (PASE VERSION)		1		1		1	
3		JS-300-P-003		Pad, Rubber		1		1		1	
2		600-710-009		Washer, Flat, 3/8		4		4		4	
1		600-640-083		Bolt, Hex Head, 3/8-16 NC x 1 1/4" (GR5)		4		4		4	
ITEM		NAME		DESCRIPTION		QTY		QTY		QTY	
5		600-900-019		Hitch Pin, 3/8 Dia x 4" Usable		1		1		1	
4		JS-300-W-007		Pad Weldment (PASE VERSION)		1		1		1	
3		JS-300-P-003		Pad, Rubber		1		1		1	
2		600-710-009		Washer, Flat, 3/8		4		4		4	
1		600-640-083		Bolt, Hex Head, 3/8-16 NC x 1 1/4" (GR5)		4		4		4	
ITEM		NAME		DESCRIPTION		QTY		QTY		QTY	
5		600-900-019		Hitch Pin, 3/8 Dia x 4" Usable		1		1		1	
4		JS-300-W-007		Pad Weldment (PASE VERSION)		1		1		1	
3		JS-300-P-003		Pad, Rubber		1		1		1	
2		600-710-009		Washer, Flat, 3/8		4		4		4	
1		600-640-083		Bolt, Hex Head, 3/8-16 NC x 1 1/4" (GR5)		4		4		4	
ITEM		NAME		DESCRIPTION		QTY		QTY		QTY	
5		600-900-019		Hitch Pin, 3/8 Dia x 4" Usable		1		1		1	
4		JS-300-W-007		Pad Weldment (PASE VERSION)		1		1		1	
3		JS-300-P-003		Pad, Rubber		1		1		1	
2		600-710-009		Washer, Flat, 3/8		4		4		4	
1		600-640-083		Bolt, Hex Head, 3/8-16 NC x 1 1/4" (GR5)		4		4		4	
ITEM		NAME		DESCRIPTION		QTY		QTY		QTY	
5		600-900-019		Hitch Pin, 3/8 Dia x 4" Usable		1		1		1	
4		JS-300-W-007		Pad Weldment (PASE VERSION)		1		1		1	
3		JS-300-P-003		Pad, Rubber		1		1		1	
2		600-710-009		Washer, Flat, 3/8		4		4		4	
1		600-640-083		Bolt, Hex Head, 3/8-16 NC x 1 1/4" (GR5)		4		4		4	
ITEM		NAME		DESCRIPTION		QTY		QTY		QTY	
5		600-900-019		Hitch Pin, 3/8 Dia x 4" Usable		1		1		1	
4		JS-300-W-007		Pad Weldment (PASE VERSION)		1		1		1	
3		JS-300-P-003		Pad, Rubber		1		1		1	
2		600-710-009		Washer, Flat, 3/8		4		4		4	
1		600-640-083		Bolt, Hex Head, 3/8-16 NC x 1 1/4" (GR5)		4		4		4	
ITEM		NAME		DESCRIPTION		QTY		QTY		QTY	
5		600-900-019		Hitch Pin, 3/8 Dia x 4" Usable		1		1		1	
4		JS-300-W-007		Pad Weldment (PASE VERSION)		1		1		1	
3		JS-300-P-003		Pad, Rubber		1		1		1	
2		600-710-009		Washer, Flat, 3/8		4		4		4	
1		600-640-083		Bolt, Hex Head, 3/8-16 NC x 1 1/4" (GR5)		4		4		4	
ITEM		NAME		DESCRIPTION		QTY		QTY		QTY	
5		600-900-019		Hitch Pin, 3/8 Dia x 4" Usable		1		1		1	
4		JS-300-W-007		Pad Weldment (PASE VERSION)		1		1		1	
3		JS-300-P-003		Pad, Rubber		1		1		1	
2		600-710-009		Washer, Flat, 3/8		4		4		4	
1		600-640-083		Bolt, Hex Head, 3/8-16 NC x 1 1/4" (GR5)		4		4		4	
ITEM		NAME		DESCRIPTION		QTY		QTY		QTY	
5		600-900-019		Hitch Pin, 3/8 Dia x 4" Usable		1		1		1	
4		JS-300-W-007		Pad Weldment (PASE VERSION)		1		1		1	
3		JS-300-P-003		Pad, Rubber		1		1		1	
2		600-710-009		Washer, Flat, 3/8		4		4		4	
1		600-640-083		Bolt, Hex Head, 3/8-16 NC x 1 1/4" (GR5)		4		4		4	
ITEM		NAME		DESCRIPTION		QTY		QTY		QTY	
5		600-900-019		Hitch Pin, 3/8 Dia x 4" Usable		1		1		1	
4		JS-300-W-007		Pad Weldment (PASE VERSION)		1		1		1	
3		JS-300-P-003		Pad, Rubber		1		1		1	
2		600-710-009		Washer, Flat, 3/8		4		4		4	
1		600-640-083		Bolt, Hex Head, 3/8-16 NC x 1 1/4" (GR5)		4		4		4	
ITEM		NAME		DESCRIPTION		QTY		QTY		QTY	
5		600-900-019		Hitch Pin, 3/8 Dia x 4" Usable		1		1		1	
4		JS-300-W-007		Pad Weldment (PASE VERSION)		1		1		1	
3		JS-300-P-003		Pad, Rubber		1		1		1	
2		600-710-009		Washer, Flat, 3/8		4		4		4	
1		600-640-083		Bolt, Hex Head, 3/8-16 NC x 1 1/4" (GR5)		4		4		4	
ITEM		NAME		DESCRIPTION		QTY		QTY		QTY	
5		600-900-019		Hitch Pin, 3/8 Dia x 4" Usable		1		1		1	
4		JS-300-W-007		Pad Weldment (PASE VERSION)		1		1		1	
3		JS-300-P-003		Pad, Rubber		1		1		1	
2		600-710-009		Washer, Flat, 3/8		4		4		4	
1		600-640-083		Bolt, Hex Head, 3/8-16 NC x 1 1/4" (GR5)		4		4		4	
ITEM		NAME		DESCRIPTION		QTY		QTY		QTY	
5		600-900-019		Hitch Pin, 3/8 Dia x 4" Usable		1		1		1	
4		JS-300-W-007		Pad Weldment (PASE VERSION)		1		1		1	
3		JS-300-P-003		Pad, Rubber		1		1		1	
2		600-710-009		Washer, Flat, 3/8		4		4		4	
1		600-640-083		Bolt, Hex Head, 3/8-16 NC x 1 1/4" (GR5)		4		4		4	
ITEM		NAME		DESCRIPTION		QTY		QTY		QTY	
5		600-900-019		Hitch Pin, 3/8 Dia x 4" Usable		1		1		1	
4		JS-300-W-007		Pad Weldment (PASE VERSION)		1		1		1	
3		JS-300-P-003		Pad, Rubber		1		1		1	
2		600-710-009		Washer, Flat, 3/8		4		4		4	
1		600-640-083		Bolt, Hex Head, 3/8-16 NC x 1 1/4" (GR5)		4		4		4	
ITEM		NAME		DESCRIPTION		QTY		QTY		QTY	
5		600-900-019		Hitch Pin, 3/8 Dia x 4" Usable		1		1		1	
4		JS-300-W-007		Pad Weldment (PASE VERSION)		1		1		1	
3		JS-300-P-003		Pad, Rubber		1		1		1	
2		600-710-009		Washer, Flat, 3/8		4		4		4	
1		600-640-083		Bolt, Hex Head, 3/8-16 NC x 1 1/4" (GR5)		4		4		4	
ITEM		NAME		DESCRIPTION		QTY		QTY		QTY	
5		600-900-019		Hitch Pin, 3/8 Dia x 4" Usable		1		1		1	
4		JS-300-W-007		Pad Weldment (PASE VERSION)		1		1		1	
3		JS-300-P-003		Pad, Rubber		1		1		1	
2		600-710-009		Washer, Flat, 3/8		4					

#	DESCRIPTION	DATE	APPROVED
A	1. Item 2 was incorrectly 600-690-014 (3/8)	07/30/2015	rw7089
	2. Item 4 was 600-640-018 (qb2)		



PASE VERSION

4	600-640-242	Bolt, Hex Head, 1/2-13 NC x 3 1/4" (GR5)	2
3	600-920-012	Wheel, 4" Dia x 1/2 Dia Axle x 1 1/2 Wide	2
2	600-690-009	Nut, Nylon Lock, 1/2-13 NC	2
1	JS-100-W-009	Jack Stand Base Weldment (JS-xx-3047) (PASE VERSION)	1



C-SIZE		ITEM		NAME		DESCRIPTION		QTY	
NOTES: 1. REMOVE ALL SHARP CORNERS & EDGES. 2. UNLESS OTHERWISE SPECIFIED, SURFACE FINISH TO BE 125 RMS. 3. WELDING MEDIAN SHALL CONFORM TO AWS SPECIFICATIONS TO E-70XX ELECTRODES OR E-70TT CODE S3 FLUX CORE WIRE ONLY.		TOLERANCES: ANGULAR ± 1° FRACTIONAL ± .030 DECIMAL ± .030 XXX ± .005		FILE NAME JS-100-A-004		SCALE 1/4		DRAWN RW7089	
						CHECKED		APPROVED	
						DATE 6/2015		WEIGHT 99.7	
						NEXT ASSEMBLY		FROM	
NOTICE OF CONFIDENTIAL INFORMATION		INFORMATION CONTAINED HEREIN IS CONFIDENTIAL AND PROPERTY OF MOHAWK RESOURCES LTD. WHERE DRAWING IS FURNISHED TO OTHERS IT SHALL BE USED SOLELY FOR PURPOSES OF INSPECTION, INSTALLATION, REPAIR, OR MAINTENANCE OF THE EQUIPMENT OR SYSTEM FOR WHICH IT WAS REQUESTED FOR ANY OTHER PURPOSES WHATSOEVER.		TITLE JS-xx-3047 (PASE VERSION) Jack Stand Base Assy		DRAWING NUMBER JS-100-A-004		MOHAWK RESOURCES LTD.	

⚠ CAUTION



Always use safety stands when removing or installing heavy components. ©

The illustration shows a car on a lift. Two safety stands are positioned under the front and rear of the car. Two arrows point to the safety stands, indicating they must be used when working on the vehicle.

⚠ WARNING



Use lift locking device or 4 stands to support vehicle. ©

The illustration shows a car supported by a lift locking device (a central T-shaped stand) or four safety stands (two on each side). Two arrows point to the lift locking device and the word "or" is written below them, indicating that either method can be used to support the vehicle.

MOHAWK LIFT PRODUCTS

The Lifts You Can't Wear Out



TWO POST

Model System IA-10



Model TP-20



FOUR POST

Model TR-75



MOBILE COLUMN

Model MP-18-007



PARALLELOGRAM

Model 75-32-F



VERTICAL RISE

Model V-77-30S

MOHAWK LIFTS

Mohawk Lifts, LLC.

P.O. Box 110 • 65 Vrooman Ave

Amsterdam, NY 12010

Phone: (800) 833-2006 • (518) 842-1431

www.mohawklifts.com

SEND US YOUR PHOTOS!

MOHAWK IS ALWAYS INTERESTED IN SEEING HOW YOUR LIFTS ARE USED. WE HAVE CREATED AN ON-LINE PHOTO DATABASE FOR CUSTOMERS TO VIEW OUR LIFTS IN USE.



VISIT WWW.MOHAWKLIFTS.COM/PR/ AND MAYBE WE CAN ADD YOUR PHOTOS TO OUR COLLECTION.
(JPG FORMATS PREFERRED)

E-MAIL YOUR PHOTOS AND COMMENTS TO:
PHOTOS@MOHAWKLIFTS.COM

BEST REGARDS & HAPPY LIFTING!

YOUR FRIENDS AT MOHAWK LIFTS