






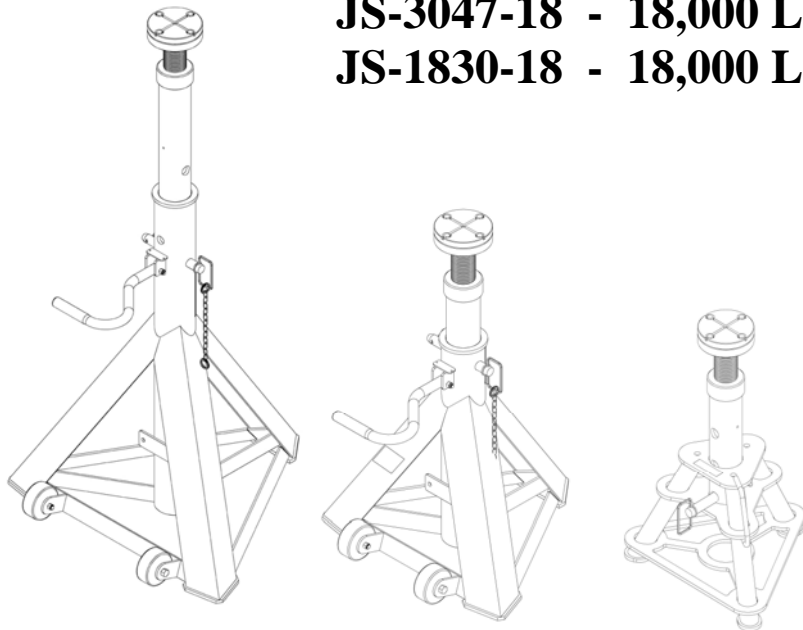
# MOHAWK

MADE IN THE USA



## JS-Series Jack Stand

JS-4775-24 - 24,000 LB. CAPACITY -   
JS-3047-24 - 24,000 LB. CAPACITY -   
JS-1830-24 - 24,000 LB. CAPACITY -   
JS-4775-18 - 18,000 LB. CAPACITY -   
JS-3047-18 - 18,000 LB. CAPACITY -   
JS-1830-18 - 18,000 LB. CAPACITY - 



- ☒ OPERATION
- ☒ MAINTENANCE
- ☒ PARTS



Mohawk JS-Series Models  
Above Listed Products to  
ASME PALD

### MOHAWK RESOURCES LTD.

VROOMAN AVE

PO BOX 110

AMSTERDAM, NY 12010

**TOLL FREE:** 1-800-833-2006

**LOCAL:** 1-518-842-1431

**FAX:** 1-518-842-1289

**INTERNET:** WWW.MOHAWKLIFTS.COM

**E-MAIL:** SERVICE@MOHAWKLIFTS.COM

Jack Stands 9-2008.doc

Rev Date 9-4-2008

Part #601-800-263

**READ MANUAL  
THOROUGHLY BEFORE  
INSTALLING,  
OPERATING OR SERVICING  
THIS LIFT !!**

**Deliver these instructions to lift  
owner/user/employer along with  
other instructional materials  
furnished with this lift.**

**MOHAWK WARRANTIES**  
EFFECTIVE DATE: 5/7/2007 \*

**GENERAL WARRANTY INFORMATION:**

MOHAWK'S OBLIGATION UNDER THIS WARRANTY IS LIMITED TO REPAIRING OR REPLACING ANY PART OR PARTS RETURNED TO THIS FACTORY, TRANSPORTATION CHARGES PREPAID, WHICH PROVE UPON INSPECTION TO BE DEFECTIVE AND WHICH HAVE NOT BEEN MISUSED. DAMAGE OR FAILURE TO ANY PART DUE TO FREIGHT DAMAGE OR FAULTY MAINTENANCE IS NOT COVERED UNDER THIS WARRANTY. ALL WARRANTY CLAIMS MUST BE PERFORMED IN ACCORDANCE TO MOHAWK'S WARRANTY PARTS RETURN POLICY (CONTACT MOHAWK'S SERVICE DEPARTMENT FOR MORE INFORMATION). THIS WARRANTY DOES NOT COVER MIS-DIAGNOSING OF UNIT OR PARTS RETURNED THAT ARE NON-DEFECTIVE. THIS WARRANTY DOES NOT COVER ANY CONSEQUENTIAL OR INCIDENTAL DAMAGES INCLUDING, BUT NOT LIMITED TO, LOST REVENUES OR BUSINESS HARM. THIS EQUIPMENT HAS BEEN DESIGNED FOR USE IN NORMAL COMMERCIAL VEHICLE MAINTENANCE APPLICATIONS. A SPECIFIC INDIVIDUAL WARRANTY MUST BE ISSUED FOR UNITS THAT DEVIATE FROM INTENDED USAGE, SUCH AS HIGH CYCLE USAGE IN INDUSTRIAL APPLICATIONS, OR USAGE IN EXTREMELY ABUSIVE ENVIRONMENTS, ETC.. MOHAWK RESERVES THE RIGHT TO DECLINE RESPONSIBILITY WHEN REPAIRS HAVE BEEN MADE OR ATTEMPTED BY OTHERS. THIS WARRANTY DOES NOT COVER DOWNTIME EXPENSES INCURRED WHEN UNIT IS IN REPAIR. THE MODEL NAME AND SERIAL NUMBER OF THE EQUIPMENT MUST BE FURNISHED WITH ALL WARRANTY CLAIMS. THIS WARRANTY STATEMENT CONTAINS THE ENTIRE AGREEMENT BETWEEN MOHAWK RESOURCES LTD. AND THE PURCHASER UNLESS OTHERWISE SPECIFICALLY EXPRESSED IN WRITING. THIS NON-TRANSFERABLE WARRANTY APPLIES TO THE ORIGINAL PURCHASER ONLY. THIS WARRANTY IS APPLICABLE TO UNITS LOCATED ONLY IN THE UNITED STATES OF AMERICA AND CANADA. CONTACT MOHAWK RESOURCES LTD. FOR SPECIFIC WARRANTY PROVISIONS FOR UNITS LOCATED OUTSIDE OF THESE COUNTRIES.

**STRUCTURAL COMPONENTS (ALL LIFTS):**

ALL STRUCTURAL AND MECHANICAL COMPONENTS OF THIS UNIT ARE GUARANTEED FOR THE BELOW STATED TIME FRAME, SPECIFIC TO MODEL LISTED, FROM THE DATE OF INVOICE, AGAINST DEFECTS IN WORKMANSHIP AND/OR MATERIALS WHEN LIFT IS INSTALLED AND USED ACCORDING TO SPECIFICATIONS.

**5-YEAR:** MODELS A-7, SYSTEM IA, SYSTEM IA-10, TOMAHAWK-9000, LMF-12, TP-15, TP-16, TP-18, TP-20, TP-26, TP-30, & TL-7.

**3-YEAR:** MODELS TR-19, TR-25, FL-25, TR-33, TR-35, TR-50, TR-75, TR-110, TR-120, MP-SERIES, RP-SERIES LIFTS.

**2-YEAR:** MODELS PARALLELOGRAM SERIES LIFTS.

**1-YEAR:** MODELS HR-6, TD-1000, CT-1000, USL-6000.

**POWER UNIT (ALL LIFTS):**

ALL POWER UNIT COMPONENTS (MOTOR, PUMP AND RESERVOIR) ARE GUARANTEED FOR TWO YEARS FOR PARTS (ONE YEAR LABOR), FROM THE DATE OF INVOICE, AGAINST DEFECTS IN WORKMANSHIP AND/OR MATERIALS WHEN THE LIFT IS INSTALLED AND USED ACCORDING TO SPECIFICATIONS.

**HYDRAULIC CYLINDERS (MODEL SPECIFIC LIFTS):**

SEE MOHAWK'S "EXTENDED LIFETIME CYLINDER WARRANTY" FOR SPECIFIC WARRANTY PROVISIONS FOR HYDRAULIC CYLINDERS. THE "EXTENDED LIFETIME CYLINDER WARRANTY" IS APPLICABLE TO THE FOLLOWING MOHAWK LIFTS ONLY: A-7, SYSTEM IA, SYSTEM IA-10, LMF-12, TP-15, TP-18, TP-20, TP-26, TP-30. ALL OTHER MODELS ARE GUARANTEED FOR TWO YEARS PARTS AND ONE YEAR LABOR (EXCEPT HR-6, WHICH IS ONE YEAR PARTS ONLY), FROM THE DATE OF INVOICE, AGAINST DEFECTS IN WORKMANSHIP AND/OR MATERIALS WHEN THE LIFT IS INSTALLED AND USED ACCORDING TO SPECIFICATIONS.

**ELECTRICAL COMPONENTS (ALL LIFTS):**

ALL ELECTRICAL COMPONENTS (EXCLUDING MOTOR) ARE GUARANTEED FOR ONE YEAR FOR PARTS AND LABOR, FROM THE DATE OF INVOICE, AGAINST DEFECTS IN WORKMANSHIP AND/OR MATERIALS WHEN THE LIFT IS INSTALLED AND USED ACCORDING TO SPECIFICATIONS.

**PNEUMATIC-AIR COMPONENTS (ALL LIFTS):**

ALL PNEUMATIC (AIR) COMPONENTS (I.E. AIR CYLINDERS AND POPPET AIR VALVES) ARE GUARANTEED FOR ONE YEAR FOR PARTS AND LABOR, FROM THE DATE OF INVOICE, AGAINST DEFECTS IN WORKMANSHIP AND/OR MATERIALS WHEN THE LIFT IS INSTALLED AND USED ACCORDING TO SPECIFICATIONS.

**STANDARD OPTIONS (ALL LIFTS):**

ALL STANDARD OPTIONS OF THIS UNIT ARE GUARANTEED FOR ONE YEAR FOR PARTS AND LABOR, FROM THE DATE OF INVOICE, AGAINST DEFECTS IN WORKMANSHIP AND/OR MATERIALS WHEN LIFT IS INSTALLED AND USED ACCORDING TO SPECIFICATIONS.

**SPECIAL AND/OR CUSTOMIZED LIFTS AND OPTIONS:**

ALL "SPECIAL" LIFTS AND/OR "CUSTOMIZED" OPTIONS ON THIS UNIT ARE GUARANTEED FOR ONE YEAR FOR PARTS ONLY (EXCLUDING LABOR), FROM THE DATE OF INVOICE, AGAINST DEFECTS IN WORKMANSHIP AND/OR MATERIALS WHEN THE LIFT IS INSTALLED AND USED ACCORDING TO SPECIFICATIONS.

**WARRANTY EXCEPTIONS (ALL LIFTS):**

**ADJUSTMENTS:** THIS WARRANTY DOES NOT COVER CASUAL AND ROUTINE ADJUSTMENTS SUCH AS, BUT NOT LIMITED TO: FITTINGS, J-BAR ADJUSTMENTS, ANCHOR BOLT RE-TIGHTENING, OR ANY SHIMMING OR ADJUSTMENTS REQUIRED DURING A PROPER AND PROFESSIONAL INSTALLATION BY A QUALIFIED INSTALLER.

**MAINTENANCE AND INSPECTIONS:** IF THIS UNIT IS NOT MAINTAINED AND INSPECTED IN ACCORDANCE TO THE RELEVANT SECTIONS IN THE USERS MANUAL FOR THIS SPECIFIC MODEL, WARRANTY IS SUSPENDED UNTIL THE LIFT CONDITION IS PROVEN TO BE TO MOHAWK'S SATISFACTION (ANY CURRENT CLAIMS WILL NOT BE PAID UNTIL THIS REQUIREMENT IS MET). OSHA, ANSI AND MOHAWK REQUIRE THAT RECORDS MUST BE MAINTAINED TO PROVE THAT INSPECTIONS AND MAINTENANCE OF THIS UNIT HAVE BEEN ROUTINELY PERFORMED BY QUALIFIED INDIVIDUALS.

**ABUSE:** IF THIS UNIT IS FOUND TO BE OVERLOADED (PURPOSELY OR UNKNOWINGLY), USED IN A SITUATION BEYOND ITS INTENDED FUNCTION, NOT MAINTAINED OR INSPECTED REGULARLY, OR USED IN AN ABUSIVE ENVIRONMENT, ETC., THIS WARRANTY IS VOID IN ITS ENTIRETY.

**NON-EXISTENT PROBLEMS:** FOR SERVICE VISITS, PART REPLACEMENTS, LABOR, ETC. FOR PARTS FOUND TO BE NON-DEFECTIVE, OR FOR A UNIT DIS-FUNCTION THAT DOES NOT EXIST, IT IS THE LIFT OWNER THAT REQUESTED THE SERVICE VISIT WHO BEARS THE RESPONSIBILITY OF ALL RELATED EXPENSES.

**BATTERIES:** ALL BATTERIES CARRY THE BATTERY MANUFACTURER'S WARRANTY. MAINTENANCE REQUIREMENTS AND ABUSE PROVISIONS ARE AS STATED BY THE BATTERY MANUFACTURER. REFER TO BATTERY MANUFACTURER'S WARRANTY.

\* THIS WARRANTY SUPERSEDES ALL OTHER WARRANTY POLICIES PREVIOUSLY STATED AND IN ALL OTHER MOHAWK PRODUCT SPECIFIC LITERATURE (MANUALS, BROCHURES, ETC.).

## **GENERAL INSTRUCTIONS & WARNINGS:**

STUDY, UNDERSTAND, AND FOLLOW ALL INSTRUCTIONS BEFORE OPERATING THIS DEVICE. RETAIN THESE INSTRUCTIONS FOR FUTURE REFERENCE.

IF THE OPERATOR IS NOT FLUENT IN ENGLISH, THE PRODUCT INSTRUCTIONS AND WARNINGS SHALL BE READ TO AND DISCUSSED WITH THE OPERATOR IN THE OPERATOR'S NATIVE LANGUAGE BY THE PURCHASE/OWNER OR HIS DESIGNEE, MAKING SURE THE OPERATOR COMPREHENDS ITS CONTENTS.

THE EQUIPMENT DESCRIBED IN THIS MANUAL COULD BE POTENTIALLY DANGEROUS IF IMPROPERLY OR CARELESSLY OPERATED. FOR THE PROTECTION OF ALL PERSONS AND EQUIPMENT, ONLY COMPETENTLY TRAINED OPERATORS WHO ARE CRITICALLY AWARE OF THE PROPER OPERATING PROCEDURES, POTENTIAL DANGERS, AND SPECIFIC APPLICATION OF THIS EQUIPMENT SHOULD BE ALLOWED TO USE THIS EQUIPMENT AT ANY TIME.

BECAUSE OF POTENTIAL HAZARDS ASSOCIATED WITH THIS TYPE OF EQUIPMENT, NO ALTERATIONS SHALL BE MADE TO THIS PRODUCT.

FAILURE TO HEED ALL WARNINGS CONTAINED IN THIS MANUAL MAY RESULT IN PERSONAL INJURY AND/OR PROPERTY DAMAGE.

ALL WARRANTIES APPLICABLE TO THIS EQUIPMENT ARE CONTINGENT ON STRICT ADHERENCE TO THE OPERATION AND MAINTENANCE PROCEDURES IN THIS MANUAL.

RECOMMENDATIONS BY THE INDIVIDUAL USER OR USING ORGANIZATION FOR IMPROVING THIS PUBLICATION OR ANY ASPECT OF THE PRODUCT ARE ENCOURAGED AND SHOULD BE FORWARDED IN WRITING TO:

MOHAWK RESOURCES LTD.  
PRODUCT IMPROVEMENTS  
VROOMAN AVE.  
PO BOX 110  
AMSTERDAM, NY 12010

## **OPERATION INSTRUCTIONS & WARNINGS:**

DO NOT EXCEED RATED CAPACITY. OVERLOADING CAN CAUSE DAMAGE TO OR FAILURE OF THE STAND.

USE STANDS ON HARD LEVEL SURFACE CAPABLE OF SUSTAINING THE LOAD. USE ON OTHER THAN HARD LEVEL SURFACES MAY RESULT IN POSSIBLE LOSS OF LOAD.

LOCATE SADDLE AT VEHICLE MANUFACTURER DESIGNATED SUPPORT POINTS. ALWAYS CONSULT THE VEHICLE LIFTING GUIDE FOR THE PROPER LIFTING POINTS ON ANY VEHICLE. THESE GUIDES ARE AVAILABLE FROM THE VEHICLE MANUFACTURERS.

PLACE LOAD IN THE CENTER OF THE SADDLE ONLY.

USE A MINIMUM OF FOUR STANDS TO SUPPORT AND STABILIZE A VEHICLE, AND A MINIMUM OF TWO ADDITIONAL STANDS FOR EACH ADDITIONAL AXLE ASSEMBLY, BEFORE STARTING REPAIRS.

DO NOT APPLY HORIZONTAL FORCES OR LARGE TORQUE LOADS TO THE VEHICLE WHILE SUPPORTED BY STANDS.

DO NOT START ENGINE WHILE SUPPORTED ON STANDS.

ENSURE STANDS ARE STABLE AND VEHICLE IS BALANCED BEFORE LOWERING ONTO STANDS.

CAREFULLY LOWER VEHICLE ONTO ALL STANDS SIMULTANEOUSLY.

ONLY ATTACHMENTS, RESTRAINTS OR ADAPTERS SUPPLIED BY THE MANUFACTURER SHALL BE USED.

ALWAYS ADJUST HEIGHT OF JACK STAND UP TO LOAD WITH PAD SCREWED ALL THE WAY DOWN FIRST. THEN RAISE CENTER SLIDER UP TO HIGHEST PIN SETTING, THEN SPIN PAD UPWARD TO LOAD.

ALWAYS ENSURE THAT HITCH PIN IS FULLY INSERTED INTO HOLES THROUGH ENTIRE BASE FRAME AND THAT HAIR PIN IS RETAINING OTHER SIDE.

THE CENTER TUBE IS SPRING LOADED TO ASSIST IN RAISING TUBE TO DESIRED HEIGHT. USE CAUTION WHEN PULLING HITCH PIN. BUILT UP SPRING FORCE MAY RAISE CENTER TUBE SUDDENLY.

## **MAINTENANCE AND INSPECTION INSTRUCTIONS & WARNINGS:**

THIS PRODUCT SHALL BE MAINTAINED IN ACCORDANCE WITH THE FOLLOWING MAINTENANCE INSTRUCTIONS.

VISUAL INSPECTION SHALL BE MADE BEFORE EACH USE OF THIS UNIT BY CHECKING FOR ABNORMAL CONDITIONS SUCH AS CRACKED WELDS, LEAKS, AND DAMAGED, LOOSE, OR MISSING PARTS.

OTHER INSPECTIONS SHALL BE MADE PER OPERATING INSTRUCTIONS ABOVE.

EACH UNIT SHALL BE INSPECTED IMMEDIATELY IF THE LIFT IS BELIEVED TO HAVE BEEN SUBJECTED TO AN ABNORMAL LOAD OR SHOCK. IT IS RECOMMENDED THAT THIS INSPECTION BE MADE BY A MANUFACTURER'S OR SUPPLIER'S AUTHORIZED REPAIR FACILITY.

PERIODICALLY LUBRICATE THREADED PORTION OF LIFT PAD WITH WD-40 OR OTHER LIGHT LUBRICANT.

OWNERS AND/OR OPERATORS SHOULD BE AWARE THAT REPAIR OF THIS EQUIPMENT MAY REQUIRE SPECIALIZED KNOWLEDGE AND FACILITIES. IT IS RECOMMENDED THAT AN ANNUAL INSPECTION OF THIS UNIT BE MADE BY A MANUFACTURER'S OR SUPPLIER'S AUTHORIZED REPAIR FACILITY AND THAT ANY DEFECTIVE PARTS, DECALS, OR WARNING LABELS BE REPLACED WITH MANUFACTURER'S OR SUPPLIER'S SPECIFIED PARTS. A LIST OF AUTHORIZED REPAIR FACILITIES IS AVAILABLE FROM THE MANUFACTURER OR SUPPLIER.

ANY UNIT THAT APPEARS TO BE DAMAGED IN ANY WAY, IS FOUND TO BE WORN, OR OPERATES ABNORMALLY **SHALL BE REMOVED FROM SERVICE UNTIL REPAIRED**. IT IS RECOMMENDED THAT NECESSARY REPAIRS BE MADE BY THE MANUFACTURER'S OR SUPPLIER'S AUTHORIZED REPAIR FACILITY IF REPAIRS ARE PERMITTED BY THE MANUFACTURER OR SUPPLIER.

# **MOHAWK**

## **MODEL JS-4775-18 & JS-4775-24**

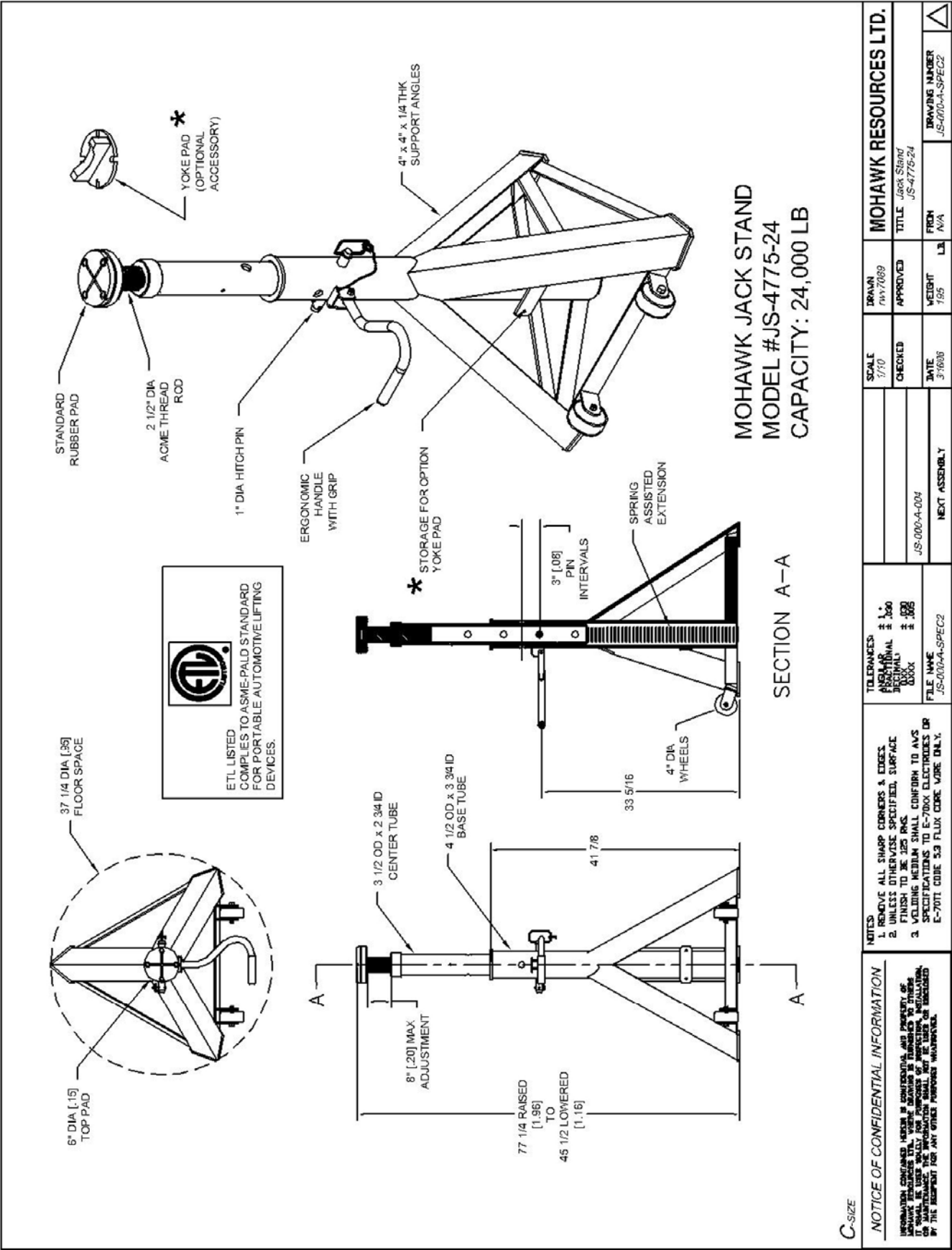
### **DRAWINGS & PARTS**



### **MOHAWK RESOURCES LTD.**

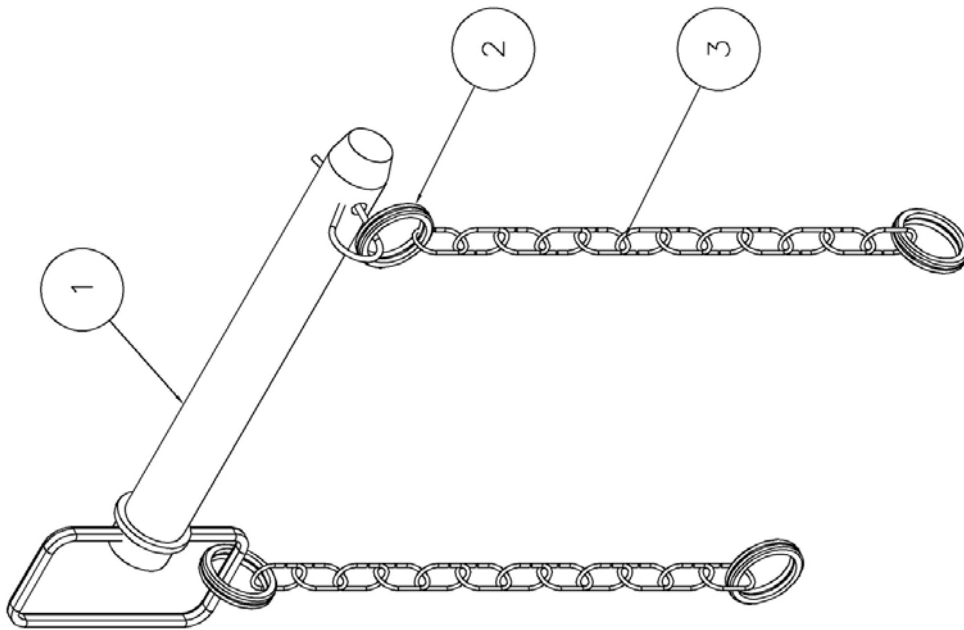
VROOMAN AVE.  
PO BOX 110  
AMSTERDAM, NY 12010  
**TOLL FREE:** 1-800-833-2006  
**LOCAL:** 1-518-842-1431  
**FAX:** 1-518-842-1289  
**INTERNET:** [WWW.MOHAWKLIFTS.COM](http://WWW.MOHAWKLIFTS.COM)  
**E-MAIL:** [SERVICE@MOHAWKLIFTS](mailto:SERVICE@MOHAWKLIFTS)











3	JS-000-P-401	Double Loop Coil Chain, Zinc Plated, Size 5 x 12 Links	2	0.250
2	600-900-011	Split Ring, 1.25 OD x 1" ID, Zinc Plated	4	0.100
1	600-900-009	Hitch Pin, 1 Dia x 6 3/4 Usable Lg w/ Hairpin	1	2.000
ITEM	NAME	DESCRIPTION	QTY	MASS

Parts List				
SCALE	DRAWN	MOHAWK RESOURCES LTD.		
3/4	rw7089	TITLE	Jack Stand Hitch Pin Assembly	
CHECKED	APPROVED	DATE	WEIGHT	DRAWING NUMBER
JS-000-A-001		9/15/2005	3	JS-000-A-002
FILE NAME	NEXT ASSEMBLY			
JS-000-A-002				

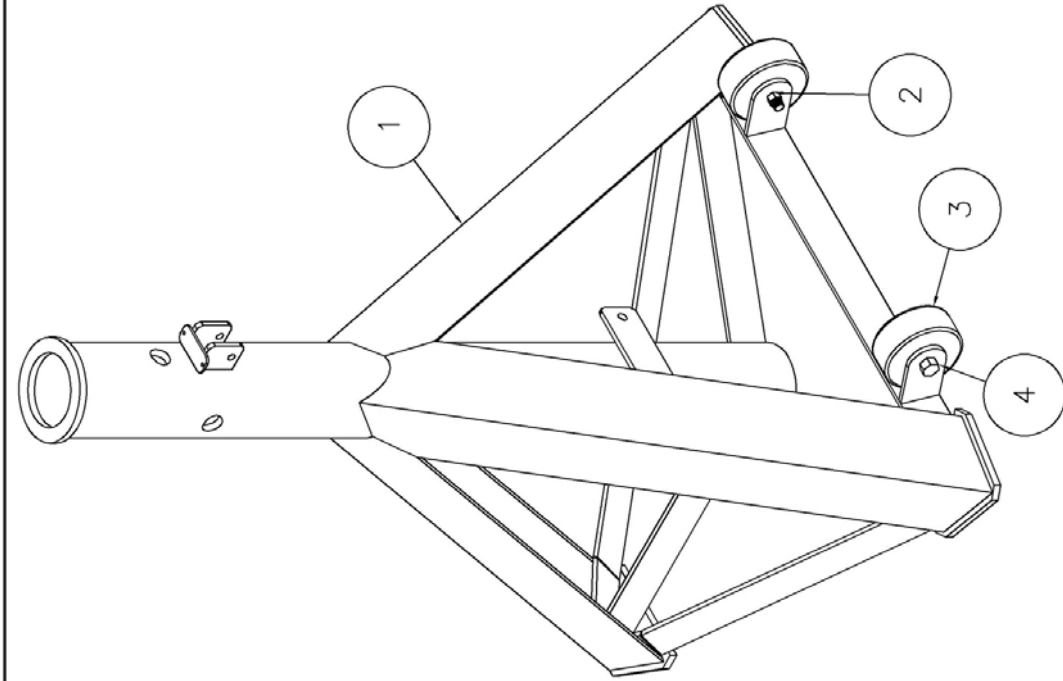
C-SIZE

NOTICE OF CONFIDENTIAL INFORMATION  
INFORMATION CONTAINED HEREIN IS CONFIDENTIAL AND PROPERTY OF MOHAWK RESOURCES LTD. IT IS TO BE USED SOLELY FOR PURPOSES OF INSPECTION, INSTALLATION, OR MAINTENANCE. THE INFORMATION SHALL NOT BE USED OR DISCLOSED BY THE RECIPIENT FOR ANY OTHER PURPOSES WHATSOEVER.

NOTES:  
1. REMOVE ALL SHARP CORNERS & EDGES.  
2. UNLESS OTHERWISE SPECIFIED, SURFACE FINISH TO BE 125 RMS.  
3. WELDING MEDUIM SHALL CONFORM TO AWS SPECIFICATIONS TO E-70XX ELECTRODES OR E-70T1 CODE 53 FLUX CORE WIRE ONLY.

TOLERANCES:  
ANGULAR ± 1°  
FRACTIONAL ± .030  
DECIMAL ± .005  
XXX ± .005  
FILE NAME JS-000-A-002

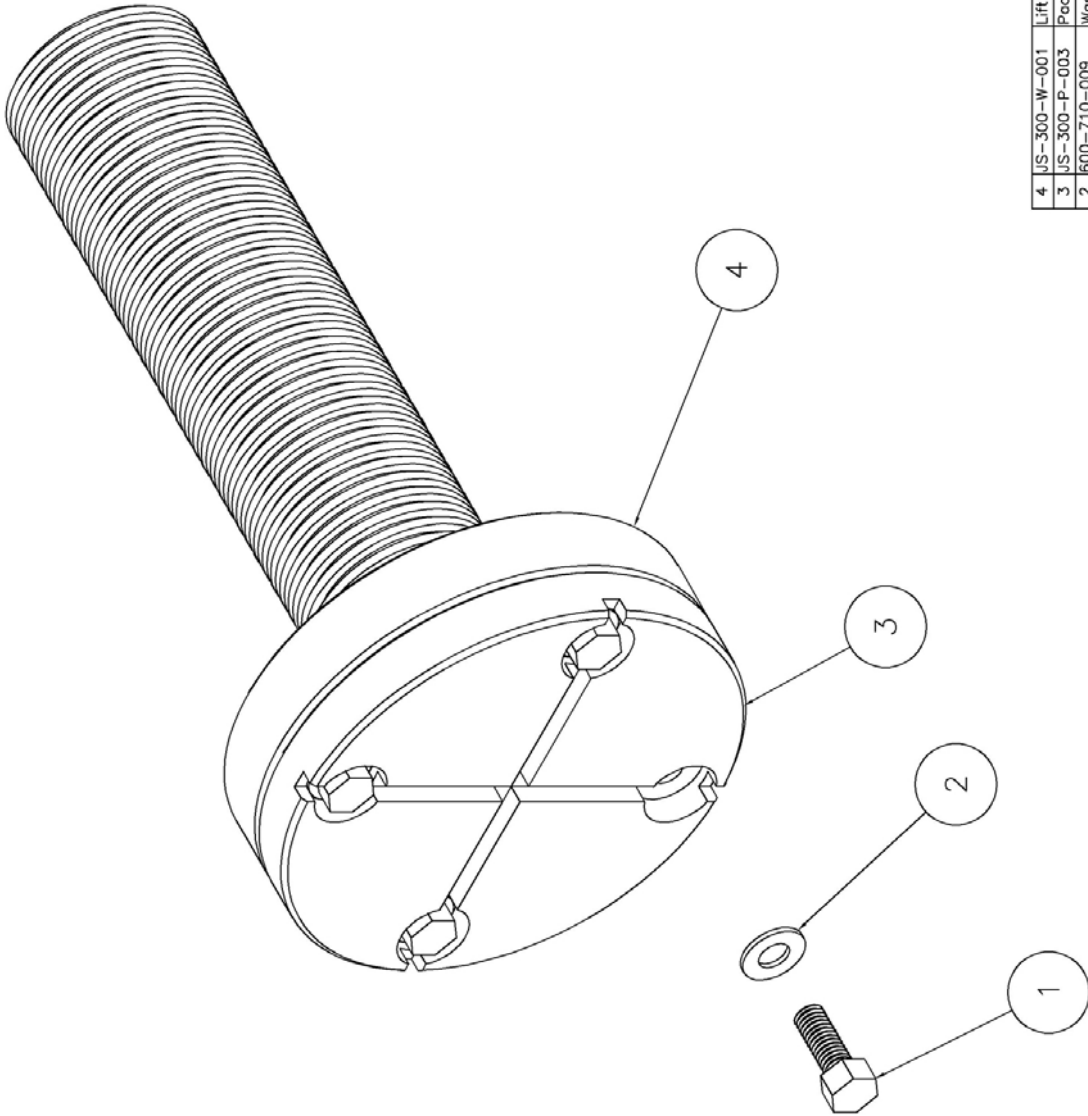




ITEM	NAME	DESCRIPTION	QTY	MASS
4	600-640-018	Bolt, Hex Head, 1/2-13 NC x 3" (GR5)	2	0.220
3	600-920-012	Wheel, 4" Dia x 1/2 Dia Axle x 1 1/2 Wide	2	0.000
2	600-690-014	Nut, Nylon Lock, 3/8-16 NC	2	0.020
1	JS-100-W-001	Jack Stand Base Weldment	1	130.000

C-size

NOTICE OF CONFIDENTIAL INFORMATION		NOTES:		TOLERANCES:		SCALE		Parts List		MOHAWK RESOURCES LTD.	
INFORMATION CONTAINED HEREIN IS CONFIDENTIAL AND PROPERTY OF MOHAWK RESOURCES LTD. IT IS TO BE USED SOLELY FOR THE PURPOSES OF INSPECTION, INSTALLATION, OR MAINTENANCE. THE INFORMATION SHALL NOT BE USED OR DISCLOSED BY THE RECIPIENT FOR ANY OTHER PURPOSES WHATSOEVER.		1. REMOVE ALL SHARP CORNERS & EDGES. 2. UNLESS OTHERWISE SPECIFIED, SURFACE FINISH TO BE 125 RMS. 3. WELDING MEDIUM SHALL CONFORM TO AWS SPECIFICATIONS TO E-70XX ELECTRODES OR E-70T1 CODE 5.3 FLUX CORE WIRE ONLY.		LINEAR ± .005 ANGULAR ± .030 DECIMAL ± .005 XXX XXX XXX		1/0" = 1'0"		DRAWN		TITLE	
								CHECKED		APPROVED	
								DATE		WEIGHT	
FILE NAME		NEXT ASSEMBLY		DATE		9/2/04		125.24		LB.	
JS-100-A-001										FRDM	
										JS-100-A-001	
										BRAWING NUMBER	
										JS-100-A-001	



C-SIZE

NOTICE OF CONFIDENTIAL INFORMATION

INFORMATION CONTAINED HEREIN IS CONFIDENTIAL AND PROPERTY OF MOHAWK RESOURCES LTD. WHERE DRAWING IS FURNISHED TO OTHERS IT SHALL BE USED SOLELY FOR PURPOSES OF INSPECTION, INSTALLATION, REPAIR, MAINTENANCE, OR REPRODUCTION. IT IS NOT TO BE REPRODUCED OR DISCLOSED BY THE RECIPIENT FOR ANY OTHER PURPOSES WHATSOEVER.

- NOTES:
- 1. REMOVE ALL SHARP CORNERS & EDGES.
  - 2. UNLESS OTHERWISE SPECIFIED, SURFACE FINISH TO BE 125 RMS.
  - 3. WELDING MEDIUM SHALL CONFORM TO AWS SPECIFICATIONS TO E-70XX ELECTRODES OR E-70TT CODE 5.3 FLUX CORE WIRE ONLY.

TOLERANCES:  
FRACTIONAL ± 1/32  
DECIMAL ± .005  
XXX ± .005

FILE NAME  
JS-300-A-001

NEXT ASSEMBLY

DATE  
8/31/04

WEIGHT  
26.16 LB.

DATE  
8/31/04

WEIGHT  
26.16 LB.

DATE  
8/31/04

WEIGHT  
26.16 LB.

DATE  
8/31/04

WEIGHT  
26.16 LB.

ITEM	NAME	DESCRIPTION	QTY	MASS
4	JS-300-W-001	Lift Pad Weldment	1	20.430
3	JS-300-P-003	Pad	1	5.500
2	600-710-009	Washer, Flat, 3/8	4	0.007
1	600-640-083	Bolt, Hex Head, 3/8-16 NC x 1" (GR5)	4	0.050

Parts List

SCALE	DRAWN	MOHAWK RESOURCES LTD.
FULL	00K	
CHECKED	APPROVED	TITLE
		JS LIFT PAD ASSEMBLY
DATE	WEIGHT	DRAWING NUMBER
8/31/04	26.16 LB.	JS-300-A-001

# **MOHAWK**

## **MODEL JS-3047-18 & JS-3047-24**

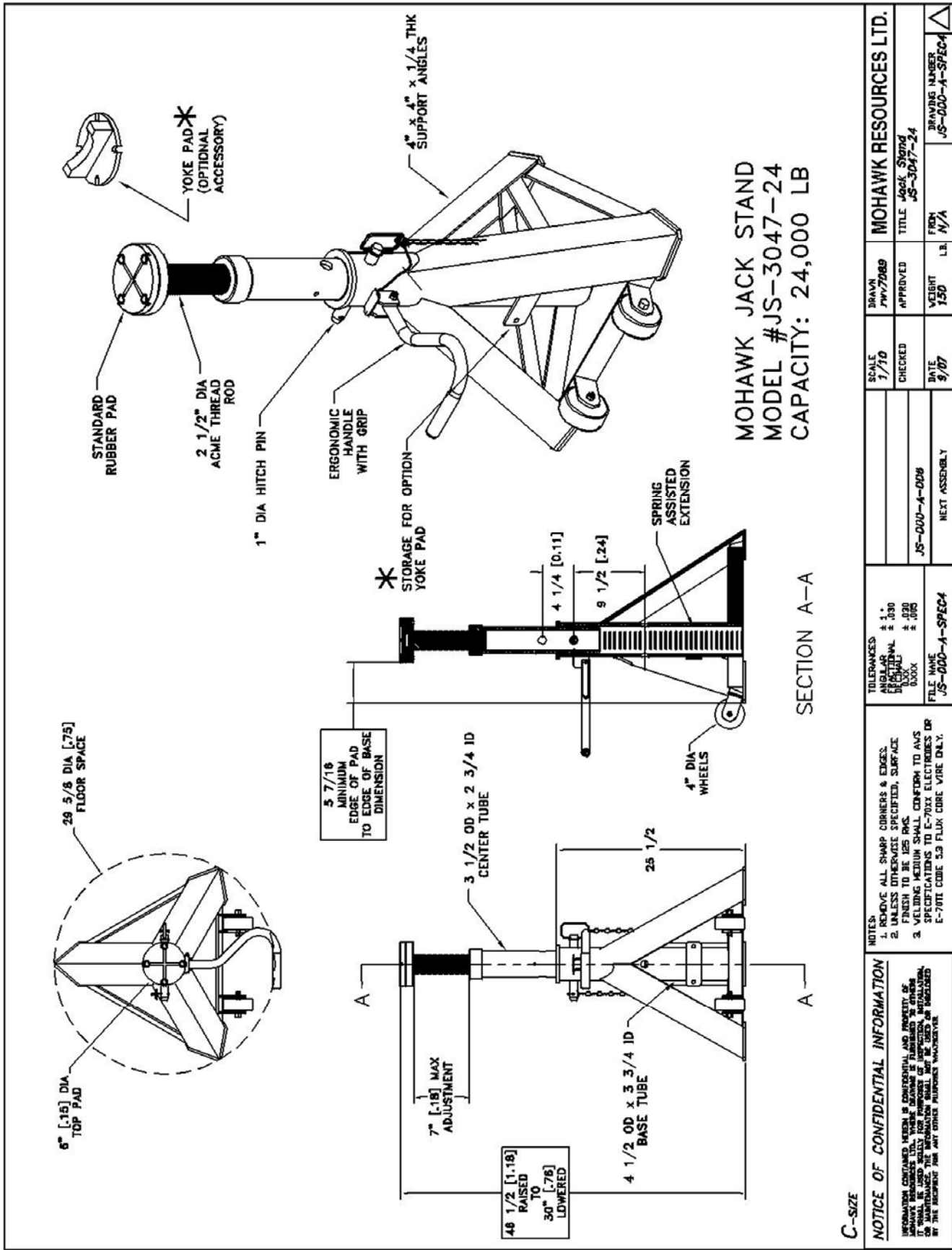
### **DRAWINGS & PARTS**



### **MOHAWK RESOURCES LTD.**

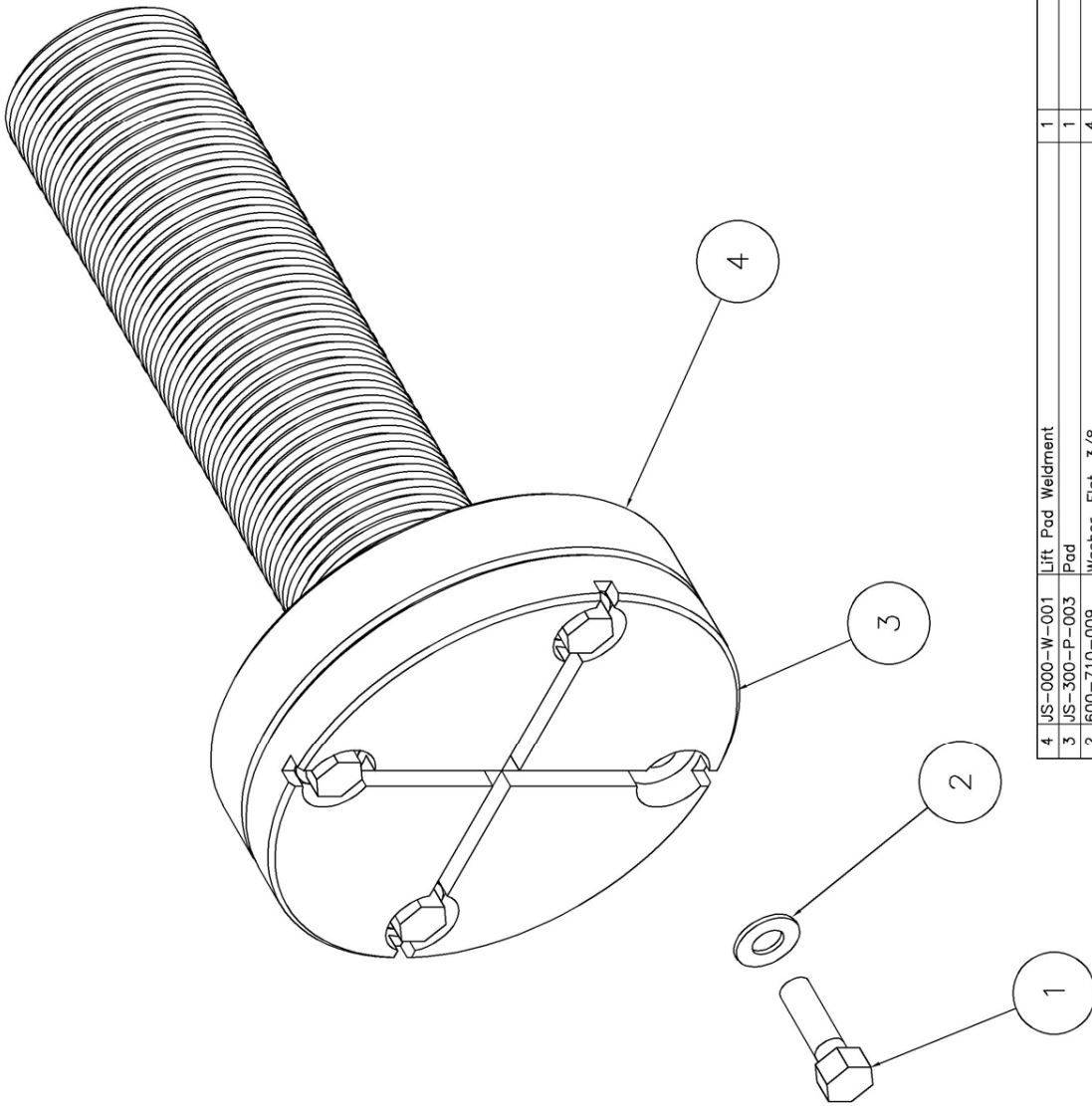
VROOMAN AVE.  
PO BOX 110  
AMSTERDAM, NY 12010  
**TOLL FREE:** 1-800-833-2006  
**LOCAL:** 1-518-842-1431  
**FAX:** 1-518-842-1289  
**INTERNET:** [WWW.MOHAWKLIFTS.COM](http://WWW.MOHAWKLIFTS.COM)  
**E-MAIL:** [SERVICE@MOHAWKLIFTS](mailto:SERVICE@MOHAWKLIFTS)







16



1

C-SIZE

NOTICE OF CONFIDENTIAL INFORMATION

INFORMATION CONTAINED HEREIN IS CONFIDENTIAL AND PROPERTY OF MOHAWK RESOURCES LTD.. WHERE DRAWING IS FURNISHED TO OTHERS FOR CONSTRUCTION, INSTALLATION, OR MAINTENANCE, THE INFORMATION SHALL NOT BE USED OR DISCLOSED BY THE RECIPIENT FOR ANY OTHER PURPOSES WHATSOEVER.

NOTES:

1. REMOVE ALL SHARP CORNERS & EDGES, UNLESS OTHERWISE SPECIFIED. SURFACE FINISH TO BE 125 RMS.

2. WELDING MEDIUM SHALL CONFORM TO AWS SPECIFICATIONS TO E-70XX ELECTRODES OR E-70TT CODE 5.3 FLUX CORE WIRE ONLY.

FILE NAME JS-000-A-007

TOLERANCES:

ANGULAR ± 1°

FRACTIONAL DECIMAL ± .030

0.001 ± .005

SCALE FULL

CHECKED

APPROVED

TITLE JS LIFT PAD ASSEMBLY

DRAWN D.M.

WEIGHT 25.67 LB.

DRAWING NUMBER JS-000-A-007

ITEM

NAME

DESCRIPTION

QTY

MATERIAL

VENDOR

NOTE

MASS

PRICE

4 JS-000-W-001 Lift Pad Weldment 1 19.900

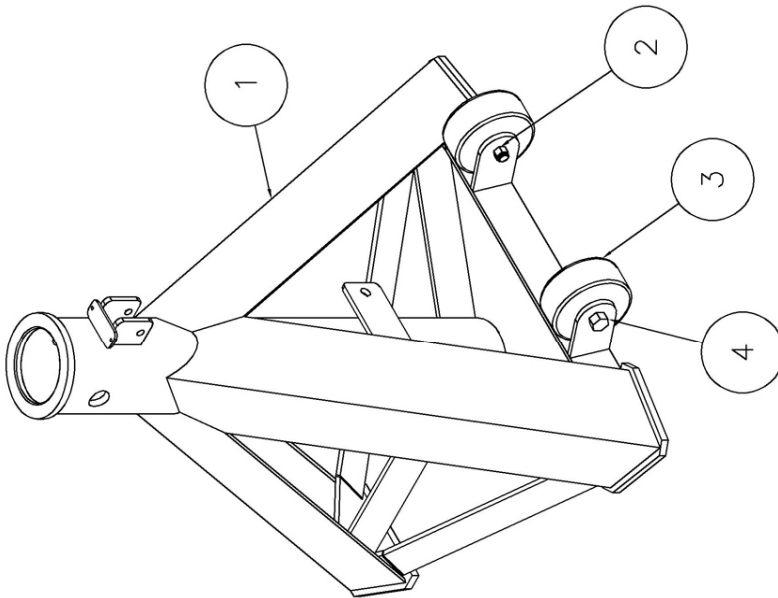
3 JS-300-P-003 Pad 1 6" Dia x 3/4 Thk 5.500

2 600-710-009 Washer, Flat, 3/8 4 0.007

1 600-640-083 Bolt, Hex Head, 3/8-16 NC x 1 1/4" (GR5) 4 0.060

Parts List

MOHAWK RESOURCES LTD.



JS-3047

4	600-640-018	Bolt, Hex Head, 1/2-13 NC x 3" (GR5)	2
3	600-920-012	Wheel, 4" Dia x 1/2 Dia Axle x 1 1/2 Wide	2
2	600-690-014	Nut, Nylon Lock, 3/8-16 NC	2
1	JS-100-W-005	Jack Stand Base Weldment (JS-3047-18)	1
ITEM	NAME	DESCRIPTION	QTY

C-size		Parts List							
<div>NOTICE OF CONFIDENTIAL INFORMATION</div> <div>INFORMATION CONTAINED HEREIN IS CONFIDENTIAL AND PROPERTY OF MOHAWK RESOURCES LTD., WHERE DRAWING IS FURNISHED TO OTHERS IT SHALL BE USED SOLELY FOR PURPOSES OF INSPECTION, INSTALLATION, OR MAINTENANCE. THE INFORMATION SHALL NOT BE USED OR DISCLOSED BY THE RECIPIENT FOR ANY OTHER PURPOSES WHATSOEVER.</div>		<div>NOTES:</div> <div>1. REMOVE ALL SHARP CORNERS &amp; EDGES.</div> <div>2. UNLESS OTHERWISE SPECIFIED, SURFACE FINISH TO BE 125 RMS.</div> <div>3. WELDING MEDIUM SHALL CONFORM TO AWS SPECIFICATIONS TO E-70XX ELECTRODES OR E-70TTI CODE 53 FLUX CORE WIRE ONLY.</div>		TOLERANCES:		SCALE		MOHAWK RESOURCES LTD.	
				ANGULAR ± 1°		1/4		DRAWN	
				FRACTIONAL ± .030				dak	
				DECIMAL ± .005		JS-000-A-005		APPROVED	
				FILE NAME		DATE		WEIGHT	
JS-100-A-002		3/07		103.26 LB.					
		NEXT ASSEMBLY				FROM		DRAWING NUMBER	
								JS-100-A-002	
								△	

# **MOHAWK**

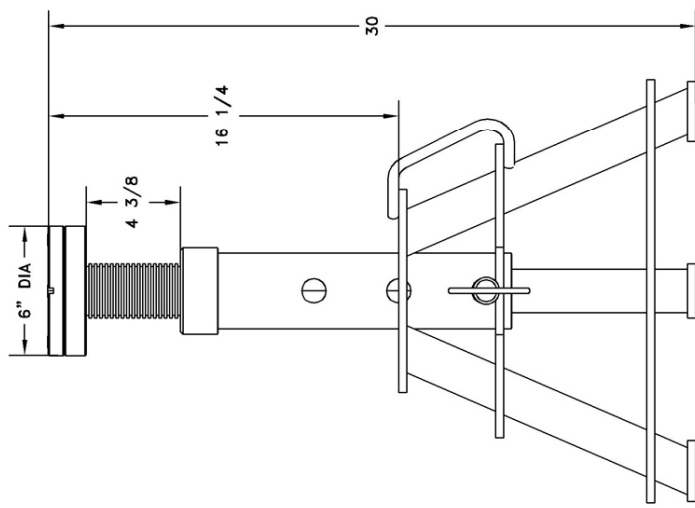
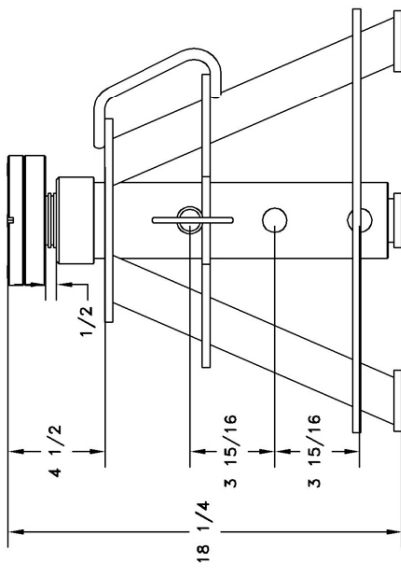
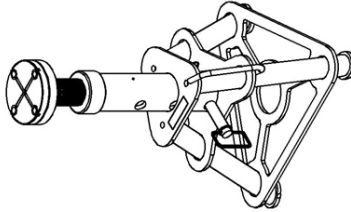
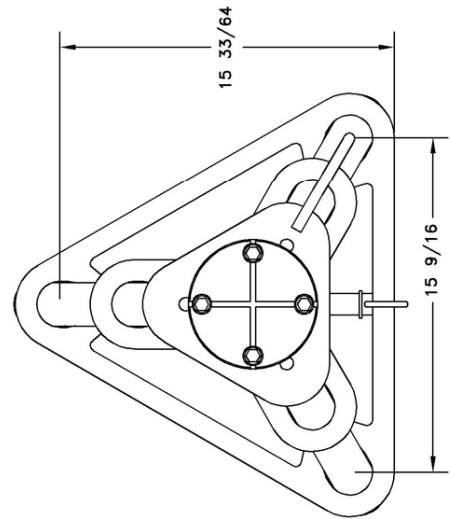
## **MODEL JS-1830-18 & JS-1830-24**

### **DRAWINGS & PARTS**



### **MOHAWK RESOURCES LTD.**

VROOMAN AVE.  
PO BOX 110  
AMSTERDAM, NY 12010  
**TOLL FREE:** 1-800-833-2006  
**LOCAL:** 1-518-842-1431  
**FAX:** 1-518-842-1289  
**INTERNET:** [WWW.MOHAWKLIFTS.COM](http://WWW.MOHAWKLIFTS.COM)  
**E-MAIL:** [SERVICE@MOHAWKLIFTS](mailto:SERVICE@MOHAWKLIFTS)

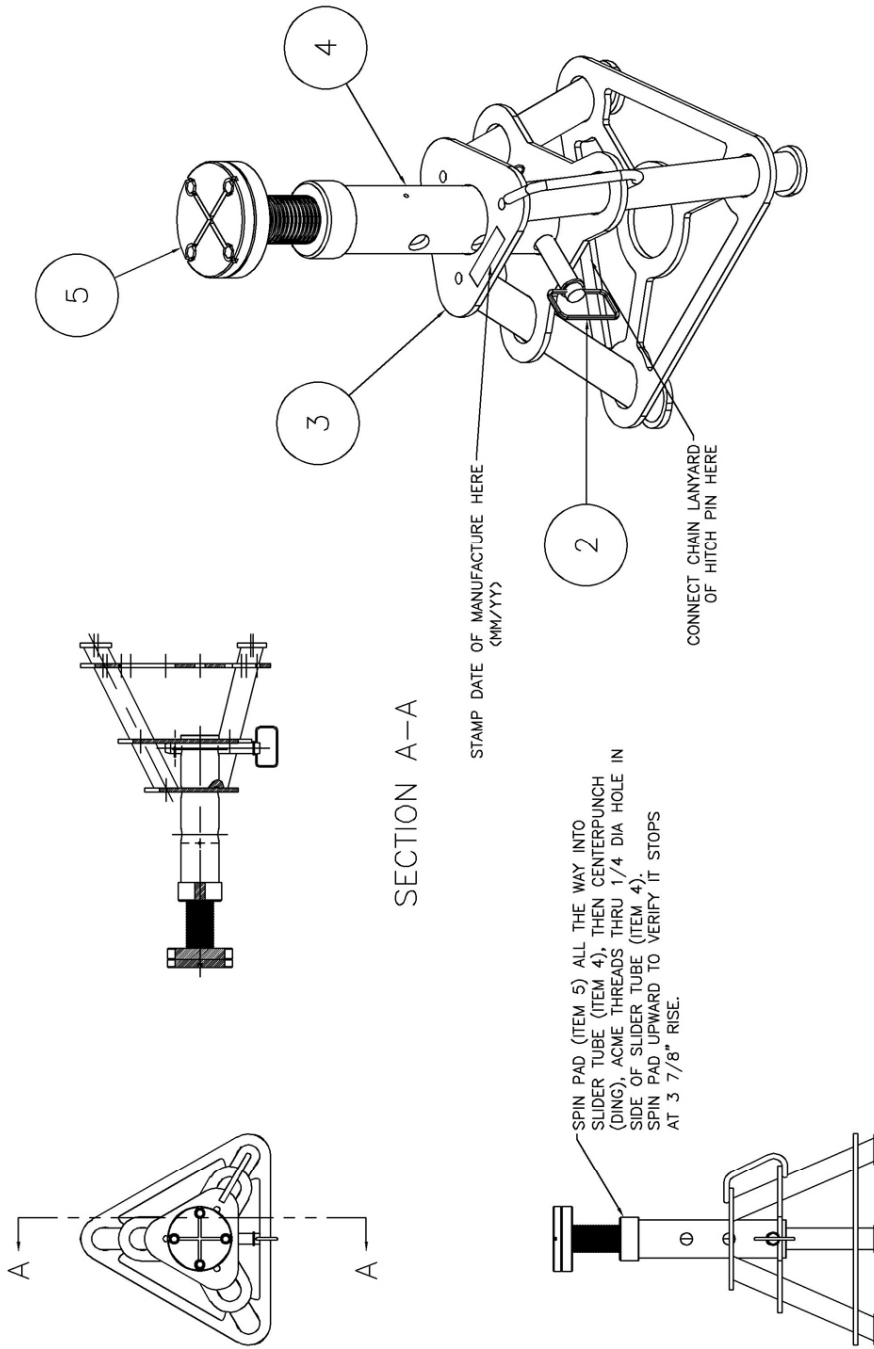


JS-1830-18  
&  
JS-1830-24

PG 2 OF 2

C-SIZE

NOTICE OF CONFIDENTIAL INFORMATION		NOTES:		TOLERANCES:		SCALE		DRAWN		MOHAWK RESOURCES LTD.	
INFORMATION CONTAINED HEREIN IS CONFIDENTIAL AND PROPERTY OF MOHAWK RESOURCES LTD., WHERE DRAWING IS FURNISHED TO OTHERS IT SHALL BE USED SOLELY FOR PURPOSES OF INSPECTION, INSTALLATION, REPAIR, OR MAINTENANCE OF THE EQUIPMENT FOR WHICH IT WAS DESIGNED BY THE RECIPIENT FOR ANY OTHER PURPOSES WHATSOEVER.		1. REMOVE ALL SHARP CORNERS & EDGES. 2. UNLESS OTHERWISE SPECIFIED, SURFACE FINISH TO BE 125 RMS. 3. WELDING MEDIUM SHALL CONFORM TO AWS SPECIFICATIONS TO E-70XX ELECTRODES OR E-7011 CODE 5.3 FLUX CORE WIRE ONLY.		AS BUILT ± 1° FRACTIONAL ± 0.30 DECIMAL ± 0.03 XXX ± .005		1/4"		D.W.		TITLE	
				FILE NAME JS-400-A-002		CHECKED		APPROVED		18-30" JS ASSEMBLY	
						DATE 6/07		WEIGHT 94.62 LB.		FROM	
										DRAWING NUMBER JS-400-A-002	
										NEXT ASSEMBLY	
										△	



SECTION A-A

STAMP DATE OF MANUFACTURE HERE  
(MM/YY)

CONNECT CHAIN LANYARD  
OF HITCH PIN HERE

NOTES:

1. PAINT COMPONENTS AS FOLLOWS:

RED (RUSTOLEUM #A25-6626):  
BASE WELDMENT

YELLOW (RUSTOLEUM #M15-4502):  
CENTER TUBE WELDMENT

BLACK:

LIFT PAD WELDMENT (NOT THREADS)

2. ENSURE THAT ALL PARTS ARE  
ASSEMBLED PRIOR TO SHIPPING.

3. ENSURE THAT THREADED LIFT PAD  
WELDMENT SPINS IN AND OUT OF  
CENTER TUBE WELDMENT FREELY  
WITHOUT BINDING. RUN DIE DOWN  
THREADS AND CLEAN THEM TO ENSURE  
SMOOTH ROTATION THRU FULL STROKE.

PG 1 OF 2

ITEM	NAME	DESCRIPTION	QTY	VENDOR	NOTE	MASS	PRICE
5	JS-400-A-001	18-30" JS Lift Pad Assembly	1				21.040
4	JS-400-W-002	18-30" Slider Tube Weldment	1				17.440
3	JS-400-W-003	JS-1830 Weldment	1				41.500
2	JS-000-A-002	Hitch Pin Assembly	1				3.000
1	JS-400-P-008	18-30" JS Decal, JS-1830-18	1		4" x 11"		0.000

C-size

NOTICE OF CONFIDENTIAL INFORMATION

INFORMATION CONTAINED HEREIN IS CONFIDENTIAL AND PROPERTY OF MOHAWK RESOURCES LTD. WHERE DRAWING IS FURNISHED TO OTHERS, IT SHALL BE USED SOLELY FOR PURPOSES OF INSPECTION, INSTALLATION, OR MAINTENANCE OF THE EQUIPMENT FOR WHICH IT WAS DESIGNED. NO REPRODUCTION OR DISCLOSURE OF THIS INFORMATION FOR ANY OTHER PURPOSES WHATSOEVER.

NOTES:  
1. REMOVE ALL SHARP CORNERS & EDGES.  
2. UNLESS OTHERWISE SPECIFIED, SURFACE FINISH TO BE 125 RMS.  
3. WELDING MEDIUM SHALL CONFORM TO AWS SPECIFICATIONS TO E-70XX ELECTRODES OR E-70T1 CODE 5.3 FLUX CORE WIRE ONLY.

TOLERANCES:  
FINISH TO ± 1.0  
DIMENSIONAL ± .030  
DECIMAL ± .005  
DXXX ± .005  
FILE NAME  
JS-400-A-002

SCALE  
1/8

CHECKED  
DATE  
6/07

DRWN  
D.M.

APPROVED

WEIGHT  
94.62 LB.

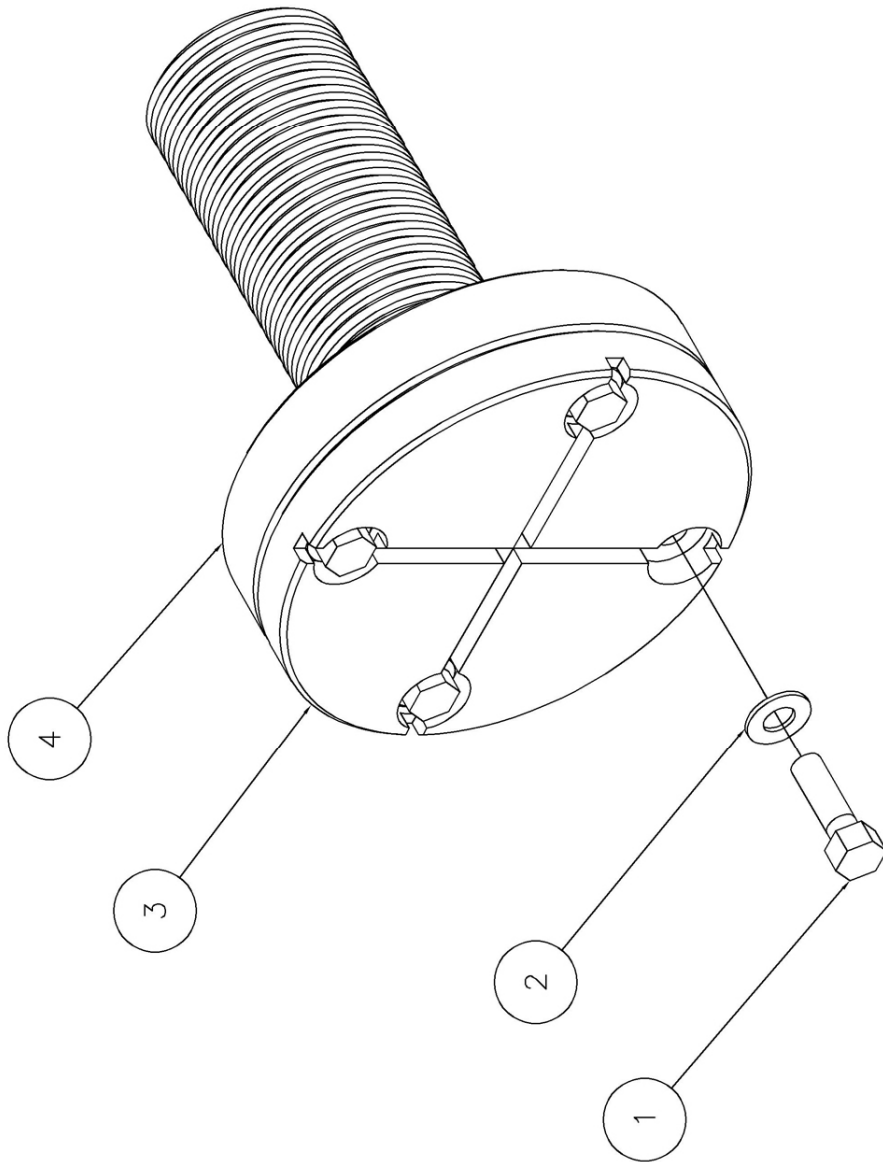
FROM

TITLE  
18-30" JS ASSEMBLY

DRAWING NUMBER  
JS-400-A-002

MOHAWK RESOURCES LTD.





<div>NOTICE OF CONFIDENTIAL INFORMATION</div> <div>INFORMATION CONTAINED HEREIN IS CONFIDENTIAL AND PROPERTY OF MOHAWK RESOURCES LTD., WHERE DRAWING IS FURNISHED TO OTHERS IT SHALL BE USED SOLELY FOR PURPOSES OF INSPECTION, INSTALLATION, REPAIR OR MAINTENANCE OF THE EQUIPMENT AND NOT BE DISCLOSED BY THE RECIPIENT FOR ANY OTHER PURPOSES WHATSOEVER.</div>				Parts List				MOHAWK RESOURCES LTD.							
				TOLERANCES: ANGULAR ± 1° FRACTIONAL ± .030 DECIMAL ± .005 DXXX ± .005		SCALE 1:1		DRAWN D. M.		CHECKED APPROVED		TITLE 18-30" JS LIFT PAD ASSEMBLY			
<div>NOTES:</div> <div>1. REMOVE ALL SHARP CORNERS &amp; EDGES.</div> <div>2. UNLESS OTHERWISE SPECIFIED, SURFACE FINISH TO BE 125 RMS.</div> <div>3. WELDING MEDIUM SHALL CONFORM TO AWS SPECIFICATIONS TO E-70XX ELECTRODES OR E-7011 CODE S3 FLUX CORE W/RE D.N.Y.</div>				FILE NAME JS-400-A-001		DATE 6/07		WEIGHT 27.04		DRAWING NUMBER JS-400-A-001					
				NEXT ASSEMBLY				FROM L.B.							
C-SIZE				NAME		DESCRIPTION		QTY		MATERIAL		NOTE		MASS	
ITEM				TOLERANCES		SCALE		DRAWN		CHECKED		TITLE		DRAWING NUMBER	
4 JS-400-W-001				ANGULAR ± 1°		1:1		D. M.				18-30" JS LIFT PAD ASSEMBLY		JS-400-A-001	
3 JS-300-P-003				FRACTIONAL ± .030								18-30" JS LIFT PAD ASSEMBLY		JS-400-A-001	
2 600-710-009				DECIMAL ± .005								18-30" JS LIFT PAD ASSEMBLY		JS-400-A-001	
1 600-640-083				DXXX ± .005								18-30" JS LIFT PAD ASSEMBLY		JS-400-A-001	
4 JS-400-W-001				ANGULAR ± 1°		1:1		D. M.				18-30" JS LIFT PAD ASSEMBLY		JS-400-A-001	
3 JS-300-P-003				FRACTIONAL ± .030								18-30" JS LIFT PAD ASSEMBLY		JS-400-A-001	
2 600-710-009				DECIMAL ± .005								18-30" JS LIFT PAD ASSEMBLY		JS-400-A-001	
1 600-640-083				DXXX ± .005								18-30" JS LIFT PAD ASSEMBLY		JS-400-A-001	
4 JS-400-W-001				ANGULAR ± 1°		1:1		D. M.				18-30" JS LIFT PAD ASSEMBLY		JS-400-A-001	
3 JS-300-P-003				FRACTIONAL ± .030								18-30" JS LIFT PAD ASSEMBLY		JS-400-A-001	
2 600-710-009				DECIMAL ± .005								18-30" JS LIFT PAD ASSEMBLY		JS-400-A-001	
1 600-640-083				DXXX ± .005								18-30" JS LIFT PAD ASSEMBLY		JS-400-A-001	
4 JS-400-W-001				ANGULAR ± 1°		1:1		D. M.				18-30" JS LIFT PAD ASSEMBLY		JS-400-A-001	
3 JS-300-P-003				FRACTIONAL ± .030								18-30" JS LIFT PAD ASSEMBLY		JS-400-A-001	
2 600-710-009				DECIMAL ± .005								18-30" JS LIFT PAD ASSEMBLY		JS-400-A-001	
1 600-640-083				DXXX ± .005								18-30" JS LIFT PAD ASSEMBLY		JS-400-A-001	
4 JS-400-W-001				ANGULAR ± 1°		1:1		D. M.				18-30" JS LIFT PAD ASSEMBLY		JS-400-A-001	
3 JS-300-P-003				FRACTIONAL ± .030								18-30" JS LIFT PAD ASSEMBLY		JS-400-A-001	
2 600-710-009				DECIMAL ± .005								18-30" JS LIFT PAD ASSEMBLY		JS-400-A-001	
1 600-640-083				DXXX ± .005								18-30" JS LIFT PAD ASSEMBLY		JS-400-A-001	
4 JS-400-W-001				ANGULAR ± 1°		1:1		D. M.				18-30" JS LIFT PAD ASSEMBLY		JS-400-A-001	
3 JS-300-P-003				FRACTIONAL ± .030								18-30" JS LIFT PAD ASSEMBLY		JS-400-A-001	
2 600-710-009				DECIMAL ± .005								18-30" JS LIFT PAD ASSEMBLY		JS-400-A-001	
1 600-640-083				DXXX ± .005								18-30" JS LIFT PAD ASSEMBLY		JS-400-A-001	
4 JS-400-W-001				ANGULAR ± 1°		1:1		D. M.				18-30" JS LIFT PAD ASSEMBLY		JS-400-A-001	
3 JS-300-P-003				FRACTIONAL ± .030								18-30" JS LIFT PAD ASSEMBLY		JS-400-A-001	
2 600-710-009				DECIMAL ± .005								18-30" JS LIFT PAD ASSEMBLY		JS-400-A-001	
1 600-640-083				DXXX ± .005								18-30" JS LIFT PAD ASSEMBLY		JS-400-A-001	
4 JS-400-W-001				ANGULAR ± 1°		1:1		D. M.				18-30" JS LIFT PAD ASSEMBLY		JS-400-A-001	
3 JS-300-P-003				FRACTIONAL ± .030								18-30" JS LIFT PAD ASSEMBLY		JS-400-A-001	
2 600-710-009				DECIMAL ± .005								18-30" JS LIFT PAD ASSEMBLY		JS-400-A-001	
1 600-640-083				DXXX ± .005								18-30" JS LIFT PAD ASSEMBLY		JS-400-A-001	
4 JS-400-W-001				ANGULAR ± 1°		1:1		D. M.				18-30" JS LIFT PAD ASSEMBLY		JS-400-A-001	
3 JS-300-P-003				FRACTIONAL ± .030								18-30" JS LIFT PAD ASSEMBLY		JS-400-A-001	
2 600-710-009				DECIMAL ± .005								18-30" JS LIFT PAD ASSEMBLY		JS-400-A-001	
1 600-640-083				DXXX ± .005								18-30" JS LIFT PAD ASSEMBLY		JS-400-A-001	
4 JS-400-W-001				ANGULAR ± 1°		1:1		D. M.				18-30" JS LIFT PAD ASSEMBLY		JS-400-A-001	
3 JS-300-P-003				FRACTIONAL ± .030								18-30" JS LIFT PAD ASSEMBLY		JS-400-A-001	
2 600-710-009				DECIMAL ± .005								18-30" JS LIFT PAD ASSEMBLY		JS-400-A-001	
1 600-640-083				DXXX ± .005								18-30" JS LIFT PAD ASSEMBLY		JS-400-A-001	
4 JS-400-W-001				ANGULAR ± 1°		1:1		D. M.				18-30" JS LIFT PAD ASSEMBLY		JS-400-A-001	
3 JS-300-P-003				FRACTIONAL ± .030								18-30" JS LIFT PAD ASSEMBLY		JS-400-A-001	
2 600-710-009				DECIMAL ± .005								18-30" JS LIFT PAD ASSEMBLY		JS-400-A-001	
1 600-640-083				DXXX ± .005								18-30" JS LIFT PAD ASSEMBLY		JS-400-A-001	
4 JS-400-W-001				ANGULAR ± 1°		1:1		D. M.				18-30" JS LIFT PAD ASSEMBLY		JS-400-A-001	
3 JS-300-P-003				FRACTIONAL ± .030								18-30" JS LIFT PAD ASSEMBLY		JS-400-A-001	
2 600-710-009				DECIMAL ± .005								18-30" JS LIFT PAD ASSEMBLY		JS-400-A-001	
1 600-640-083				DXXX ± .005								18-30" JS LIFT PAD ASSEMBLY		JS-400-A-001	
4 JS-400-W-001				ANGULAR ± 1°		1:1		D. M.				18-30" JS LIFT PAD ASSEMBLY		JS-400-A-001	
3 JS-300-P-003				FRACTIONAL ± .030								18-30" JS LIFT PAD ASSEMBLY		JS-400-A-001	
2 600-710-009				DECIMAL ± .005								18-30" JS LIFT PAD ASSEMBLY		JS-400-A-001	
1 600-640-083				DXXX ± .005								18-30" JS LIFT PAD ASSEMBLY		JS-400-A-001	
4 JS-400-W-001				ANGULAR ± 1°		1:1		D. M.				18-30" JS LIFT PAD ASSEMBLY		JS-400-A-001	
3 JS-300-P-003				FRACTIONAL ± .030								18-30" JS LIFT PAD ASSEMBLY		JS-400-A-001	
2 600-710-009				DECIMAL ± .005								18-30" JS LIFT PAD ASSEMBLY		JS-400-A-001	
1 600-640-083				DXXX ± .005								18-30" JS LIFT PAD ASSEMBLY		JS-400-A-001	
4 JS-400-W-001				ANGULAR ± 1°		1:1		D. M.				18-30" JS LIFT PAD ASSEMBLY		JS-400-A-001	
3 JS-300-P-003				FRACTIONAL ± .030								18-30" JS LIFT PAD ASSEMBLY		JS-400-A-001	
2 600-710-009				DECIMAL ± .005								18-30" JS LIFT PAD ASSEMBLY		JS-400-A-001	
1 600-640-083				DXXX ± .005								18-30" JS LIFT PAD ASSEMBLY		JS-400-A-001	
4 JS-400-W-001				ANGULAR ± 1°		1:1		D. M.				18-30" JS LIFT PAD ASSEMBLY		JS-400-A-001	
3 JS-300-P-003				FRACTIONAL ± .030								18-30" JS LIFT PAD ASSEMBLY		JS-400-A-001	
2 600-710-009				DECIMAL ± .005								18-30" JS LIFT PAD ASSEMBLY		JS-400-A-001	
1 600-640-083				DXXX ± .005								18-30" JS LIFT PAD ASSEMBLY		JS-400-A-001	
4 JS-400-W-001				ANGULAR ± 1°		1:1		D. M.				18-30" JS LIFT PAD ASSEMBLY		JS-400-A-001	
3 JS-300-P-003				FRACTIONAL ± .030								18-30" JS LIFT PAD ASSEMBLY		JS-400-A-001	
2 600-710-009				DECIMAL ± .005								18-30" JS LIFT PAD ASSEMBLY		JS-400-A-001	
1 600-640-083				DXXX ± .005								18-30" JS LIFT PAD ASSEMBLY		JS-400-A-001	
4 JS-400-W-001				ANGULAR ± 1°		1:1		D. M.				18-30" JS LIFT PAD ASSEMBLY		JS-400-A-001	
3 JS-300-P-003				FRACTIONAL ± .030								18-30" JS LIFT PAD ASSEMBLY		JS-400-A-001	
2 600-710-009				DECIMAL ± .005								18-30" JS LIFT PAD ASSEMBLY		JS-400-A-001	
1 600-640-083				DXXX ± .005								18-30" JS LIFT PAD ASSEMBLY		JS-400-A-001	
4 JS-400-W-001				ANGULAR ± 1°		1:1		D. M.				18-30" JS LIFT PAD ASSEMBLY		JS-400-A-001	
3 JS-300-P-003				FRACTIONAL ± .030								18-30" JS LIFT PAD ASSEMBLY		JS-400-A-001	
2 600-710-009				DECIMAL ± .005								18-30" JS LIFT PAD ASSEMBLY		JS-400-A-001	
1 600-640-083				DXXX ± .005								18-30" JS LIFT PAD ASSEMBLY		JS-400-A-001	
4 JS-400-W-001				ANGULAR ± 1°		1:1		D. M.				18-30" JS LIFT PAD ASSEMBLY		JS-400-A-001	
3 JS-300-P-003				FRACTIONAL ± .030								18-30" JS LIFT PAD ASSEMBLY		JS-400-A-001	
2 600-710-009				DECIMAL ± .005								18-30" JS LIFT PAD ASSEMBLY		JS-400-A-001	
1 600-640-083				DXXX ± .005								18-30" JS LIFT PAD ASSEMBLY		JS-400-A-001	
4 JS-400-W-001				ANGULAR ± 1°		1:1		D. M.				18-30" JS LIFT PAD ASSEMBLY		JS-400-A-001	
3 JS-300-P-003				FRACTIONAL ± .030								18-30" JS LIFT PAD ASSEMBLY		JS-400-A-001	
2 600-710-009				DECIMAL ± .005								18-30" JS LIFT PAD ASSEMBLY		JS-400-A-001	
1 600-640-083				DXXX ± .005								18-30" JS LIFT PAD ASSEMBLY		JS-400-A-001	
4 JS-400-W-001				ANGULAR ± 1°		1:1		D. M.				18-30" JS LIFT PAD ASSEMBLY		JS-400-A-001	
3 JS-300-P-003				FRACTIONAL ± .030								18-30" JS LIFT PAD ASSEMBLY		JS-400-A-001	
2 600-710-009				DECIMAL ± .005								18-30" JS LIFT PAD ASSEMBLY		JS-400-A-001	
1 600-640-083				DXXX ± .005								18-30" JS LIFT PAD ASSEMBLY		JS-400-A-001	
4 JS-400-W-001				ANGULAR ± 1°		1:1		D. M.				18-30" JS LIFT PAD ASSEMBLY		JS-400-A-001	
3 JS-300-P-003				FRACTIONAL ± .030								18-30" JS LIFT PAD ASSEMBLY		JS-400-A-001	
2 600-710-009				DECIMAL ± .005								18-30" JS LIFT PAD ASSEMBLY		JS-400-A-001	
1 600-640-083				DXXX ± .005								18-30" JS LIFT PAD ASSEMBLY		JS-400-A-001	
4 JS-400-W-001				ANGULAR ± 1°		1:1		D. M.				18-30" JS LIFT PAD ASSEMBLY		JS-400-A-001	
3 JS-300-P-003				FRACTIONAL ± .030								18-30" JS LIFT PAD ASSEMBLY		JS-400-A-001	
2 600-710-009				DECIMAL ± .005								18-30" JS LIFT PAD ASSEMBLY		JS-400-A-001	
1 600-640-083				DXXX ± .005								18-30" JS LIFT PAD ASSEMBLY		JS-400-A-001	
4 JS-400-W-001				ANGULAR ± 1°		1:1		D. M.				18-30" JS LIFT PAD ASSEMBLY		JS-400-A-001	
3 JS-300-P-003				FRACTIONAL ± .030								18-30" JS LIFT PAD ASSEMBLY		JS-400-A-001	
2 600-710-009				DECIMAL ± .005								18-30" JS LIFT PAD ASSEMBLY		JS-400-A-001	
1 600-640-083				DXXX ± .005								18-30" JS LIFT PAD ASSEMBLY		JS-400-A-001	
4 JS-400-W-001				ANGULAR ± 1°		1:1		D. M.				18-30" JS LIFT PAD ASSEMBLY		JS-400-A-001	
3 JS-300-P-003				FRACTIONAL ± .030								18-30" JS LIFT PAD ASSEMBLY		JS-400-A-001	
2 600-710-009				DECIMAL ± .005								18-30" JS LIFT PAD ASSEMBLY		JS-400-A-001	
1 600-640-083				DXXX ± .005								18-30" JS LIFT PAD ASSEMBLY		JS-400-A-001	
4 JS-400-W-001				ANGULAR ± 1°		1:1		D. M.				18-30" JS LIFT PAD ASSEMBLY		JS-400-A-001	
3 JS-300-P-003				FRACTIONAL ± .030								18-30" JS LIFT PAD ASSEMBLY		JS-400-A-001	
2 600-710-009				DECIMAL ± .005								18-30" JS LIFT PAD ASSEMBLY		JS-400-A-001	
1 600-640-083				DXXX ± .005								18-30" JS LIFT PAD ASSEMBLY		JS-400-A-001	
4 JS-400-W-001				ANGULAR ± 1°		1:1		D. M.				18-30" JS LIFT PAD ASSEMBLY		JS-400-A-001	
3 JS-300-P-003				FRACTIONAL ± .030								18-30" JS LIFT PAD ASSEMBLY		JS-400-A-001	
2 600-710-009				DECIMAL ± .005								18-30" JS LIFT PAD ASSEMBLY		JS-400-A-001	
1 600-640-083				DXXX ± .005								18-30" JS LIFT PAD ASSEMBLY		JS-400-A-001	
4 JS-400-W-001				ANGULAR ± 1°		1:1		D. M.				18-30" JS LIFT PAD ASSEMBLY		JS-400-A-001	
3 JS-300-P-003				FRACTIONAL ± .030								18-30" JS LIFT PAD ASSEMBLY		JS-400-A-001	
2 600-710-009				DECIMAL ± .005								18-30" JS LIFT PAD ASSEMBLY		JS-400-A-001	

**⚠ CAUTION**



The diagram shows a car on a lift. Two safety stands are positioned under the front and rear of the car. Two arrows point to the safety stands, indicating they should be used when removing or installing heavy components.

Always use safety stands when removing or installing heavy components. ©

**⚠ WARNING**



The diagram shows a car supported by a lift locking device or 4 stands. Two arrows point to the lift locking device and the word "or" is written below them, indicating that either method can be used to support the vehicle.

Use lift locking device or 4 stands to support vehicle. ©



# MOHAWK.

## Because Quality Lasts Forever.



### Model USL-6000

Full rise, space-saving, no-post, portable scissors lift, offers full under-car access.



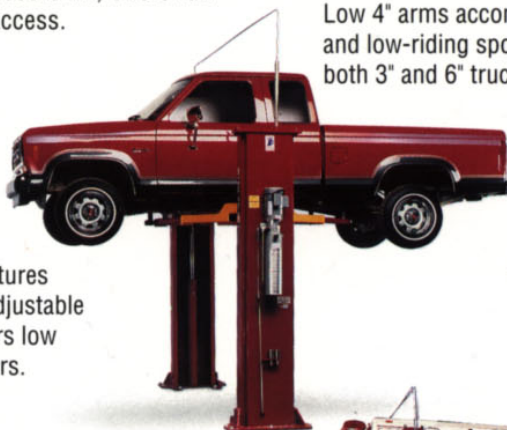
### Model A-7

The A-7 is a 7,000 lb. capacity asymmetric lift that allows full opening of all vehicle doors as well as total undercar/underdash access, thanks to Mohawk's unique "clear-floor" design. Low 4" arms accommodate all imports and low-riding sports cars. Includes both 3" and 6" truck adapters.



### Model System I

The 9,000 lb. capacity System I, like all Mohawk lifts, features Mohawk's patented hydraulic equalization system with adjustable overhead (or optional underground) hydraulic lines. Offers low 3 1/2" swing arms and comes standard with truck adapters.



### Model LMF-12, TP-15, TP-18, TP-26 & TP-30

These 12,000 to 30,000 lb. capacity models are the ideal heavy-duty lifts for up to Class VI trucks. Mohawk's unique "clear floor" design makes these the perfect lifts for all fleet applications. Truck adapters are standard equipment.



Model LMF-12



Model TR-50

### TR-Series Ramp Style Lifts

Standard models from 25,000 up to 125,000 lbs. for total under-vehicle access.

Ramp lengths from 20' to 50'. Completely operated by a single technician, and features fully interlocked, redundant safety systems.



# MOHAWK



Mohawk Industrial Park • P.O. Box 110  
Amsterdam, NY 12010

1-800-833-2006 or 518-842-1431

FAX 518-842-1289



[www.mohawklifts.com](http://www.mohawklifts.com)

# SEND US YOUR PHOTOS!

MOHAWK IS ALWAYS INTERESTED IN SEEING HOW YOUR LIFTS ARE USED. WE HAVE CREATED AN ON-LINE PHOTO DATABASE FOR CUSTOMERS TO VIEW OUR LIFTS IN USE.



VISIT [WWW.MOHAWKLIFTS.COM/PR/](http://WWW.MOHAWKLIFTS.COM/PR/) AND MAYBE WE CAN ADD YOUR PHOTOS TO OUR COLLECTION.  
(JPG FORMATS PREFERED)

E-MAIL YOUR PHOTOS AND COMMENTS TO:  
[PHOTOS@MOHAWKLIFTS.COM](mailto:PHOTOS@MOHAWKLIFTS.COM)

BEST REGARDS & HAPPY LIFTING!

YOUR FRIENDS AT MOHAWK LIFTS