

MOHAWK

MADE IN THE USA

MODELS RJ-15 & RJ-25

ELECTRIC/HYDRAULIC JACKING BEAM

RJ-15 – 15,000 LB. CAPACITY

RJ-25 - 25,000 LB. CAPACITY

- ☒ INSTALLATION
- ☒ OPERATION
- ☒ MAINTENANCE
- ☒ PARTS

MOHAWK LIFTS, LLC.

PO BOX 110, 65 VROOMAN AVE.
AMSTERDAM, NY 12010

TOLL FREE: 1-800-833-2006

LOCAL: 1-518-842-1431

FAX: 1-518-842-1289

INTERNET: WWW.MOHAWKLIFTS.COM

E-MAIL: SERVICE@MOHAWKLIFTS.COM



**READ MANUAL
THOROUGHLY BEFORE
INSTALLING,
OPERATING OR SERVICING
THIS LIFT !!**

**Deliver these instructions to lift
owner/user/employer along with
other instructional materials
furnished with this lift.**

RJ-15 & RJ-25 12/1/2015.doc

Rev Date 12/1/2015

Part #601-800-279

IMPORTANT SAFETY INSTRUCTIONS

When using your garage equipment, basic safety precautions should always be followed, including the following:

1. Read all instructions.
2. Care must be taken as burns can occur from touching hot parts.
3. Do not operate equipment with a damaged cord or if the equipment has been dropped or damaged - until it has been examined by a qualified serviceman.
3. Do not let cord or hoses come in contact with hot manifolds or moving fan blades.
4. If an extension cord is necessary, a cord with a current rating equal to or more than that of the equipment should be used. Cords rated for less current than the equipment may overheat. Care should be taken to arrange the cord so that it will not be tripped over or pulled.
5. Always unplug equipment from electrical outlet when not in use. Never use the cord to pull the plug from the outlet. Grasp plug and pull to disconnect
6. To reduce the risk of fire, do not operate equipment in the vicinity of open containers of flammable liquids (gasoline). **WARNING: Risk of Explosion:** This equipment has internal arcing and sparking parts which should not be exposed to flammable vapors. This equipment is only suitable for installation in a garage having sufficient air circulation to be considered a non-hazardous location.
7. Adequate ventilation should be provided when working on operating internal combustion engines.
8. Keep hair, loose clothing, fingers, and all parts of body away from moving parts.
9. To reduce the risk of electric shock, do not use on wet surfaces or expose to rain.
10. Use only as described in this manual. Use only manufacturer's recommended attachments.
11. **ALWAYS WEAR SAFETY GLASSES.** Everyday eyeglasses only have impact resistant lenses, they are NOT safety glasses.

SAVE THESE INSTRUCTIONS

Rev (9/28/2006)

APPENDAGE:

Rev (9/28/2006)

LIFT ENVIRONMENT:

All standard lifts are designed for indoor usage in a normal garage type environment. Any concerns in applications that expose the lift to additional environmental effects, such as paint booths, wash bays, outdoors, high or low temperatures, etc. must be addressed to our engineering department, where provisions may be made to the lift to accommodate the area of use. Our engineering department must be made aware in advance of these conditions and any additional code requirements that must be met.

ACCESSORIES:

All accessories (i.e. Lifting Pads, Height Adapters, Wheel Adapters, Turf Adapters) supplied with this lift are to be used on this lift only. Accessories from other lifts are not acceptable and could result in injury to the user.

LOCKOUT/TAGOUT REQUIREMENTS:

The start switch provided with this unit must not be used as a primary disconnecting means. A separate disconnecting means must be provided in accordance with all applicable codes. It is the responsibility of the owner/user of this unit to provide a proper lockout/tagout device for this unit before or during installation in conformance to ANSI Z244.1 and any local/state/national electrical codes and any OSHA regulations.

PROPER SELECTION OF POWER SUPPLY CORD:

Cord Size: 14/3

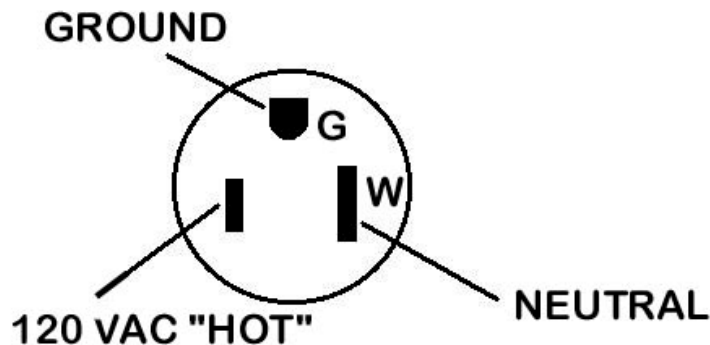
Cord Ampacity: 15 Amps minimum

Cord Wiring: Use Female NEMA Plug supplied with lift and wired as follows (See Diagram Below),

G: Ground (green)

Y: 120 VAC "Hot" to ground (Black)

Z: Neutral (white)

Face of Plug Represented:

HAVE A QUESTION?

**Call your local
Mohawk distributor
For parts, service and technical support.**

Distributor Place Card Here

Please have this unit's model and serial number when calling for service.

Model Number _____
Serial Number _____

OR CONTACT:

MOHAWK LIFTS, LLC.

65 Vrooman Ave.

P.O. Box 110

Amsterdam, NY 12010

Toll Free: 1-800-833-2006

Local: 1-518-842-1431

Fax: 1-518-842-1289

Internet: www.MOHAWKLIFTS.com

E-Mail: Service@MOHAWKLIFTS.com

MOHAWK WARRANTIES

EFFECTIVE DATE: 12/1/2015*

READ THIS WARRANTY IN ITS ENTIRETY

GENERAL WARRANTY INFORMATION:

MOHAWK'S OBLIGATION UNDER THIS WARRANTY IS LIMITED TO REPAIRING OR REPLACING ANY PART OR PARTS RETURNED TO THIS FACTORY, TRANSPORTATION CHARGES PREPAID BY CUSTOMER WITH AUTHORIZED RETURN (RGA), WHICH PROVE UPON INSPECTION TO BE DEFECTIVE AND WHICH HAVE NOT BEEN MISUSED. DAMAGE OR FAILURE TO ANY PART DUE TO FREIGHT DAMAGE OR LACK OF REQUIRED REGULAR DOCUMENTED MAINTENANCE IS NOT COVERED UNDER THIS WARRANTY. ALL WARRANTY CLAIMS MUST BE PERFORMED IN ACCORDANCE TO MOHAWK'S WARRANTY PARTS RETURN POLICY (CONTACT MOHAWK'S SERVICE DEPARTMENT FOR MORE INFORMATION).

THIS WARRANTY DOES NOT COVER MIS-DIAGNOSING OF UNIT OR PARTS RETURNED THAT ARE NON-DEFECTIVE. THIS WARRANTY DOES NOT COVER ANY CONSEQUENTIAL OR INCIDENTAL DAMAGES INCLUDING, BUT NOT LIMITED TO, LOST REVENUES OR BUSINESS HARM. THIS EQUIPMENT HAS BEEN DESIGNED FOR USE IN NORMAL VEHICLE MAINTENANCE APPLICATIONS. A SPECIFIC INDIVIDUAL WARRANTY MUST BE ISSUED FOR UNITS THAT DEVIATE FROM INTENDED USAGE, SUCH AS HIGH CYCLE USAGE IN INDUSTRIAL APPLICATIONS, OR USAGE IN EXTREMELY ABUSIVE ENVIRONMENTS. MOHAWK RESERVES THE RIGHT TO DECLINE RESPONSIBILITY WHEN REPAIRS OR MODIFICATIONS HAVE BEEN MADE OR ATTEMPTED BY OTHERS WITHOUT WRITTEN AUTHORIZATION FROM MOHAWK LIFTS, LLC.. THIS WARRANTY DOES NOT COVER LABOR OR TRANSPORTATION. THIS WARRANTY DOES NOT COVER DOWNTIME EXPENSES INCURRED WHEN UNIT IS IN REPAIR. **THE LIFT MUST BE REGISTERED WITHIN 30 DAYS OF INSTALLATION BY MAILING SUPPLIED WARRANTY REGISTRATION CARD TO MOHAWK AND MUST BE SIGNED BY A LICENSED ELECTRICIAN.** THE MODEL NUMBER AND SERIAL NUMBER OF THE EQUIPMENT MUST BE FURNISHED WITH ALL WARRANTY CLAIMS. THIS WARRANTY STATEMENT CONTAINS THE ENTIRE AGREEMENT BETWEEN MOHAWK LIFTS, LLC. AND THE PURCHASER UNLESS OTHERWISE SPECIFICALLY EXPRESSED IN WRITING. THIS NON-TRANSFERABLE WARRANTY APPLIES TO THE ORIGINAL PURCHASER ONLY.

THIS WARRANTY DOES NOT COVER NORMAL SURFACE WEAR ITEMS, ITEMS SUBJECT TO ABRASION, OR ITEMS USED IN A CORROSIVE ENVIRONMENT. SOME ITEMS ON LIFT ARE SUBJECT TO NORMAL "WEAR AND TEAR" AND ARE NOT COVERED UNDER THIS WARRANTY.

STRUCTURAL AND MECHANICAL COMPONENTS (ALL LIFTS):

STRUCTURAL AND MECHANICAL COMPONENTS OF THIS UNIT ARE GUARANTEED FOR THE BELOW STATED TIME FRAME, SPECIFIC TO MODEL LISTED, FROM THE DATE OF SHIPMENT FROM FACTORY, AGAINST DEFECTS IN WORKMANSHIP AND/OR MATERIALS WHEN LIFT IS INSTALLED AND USED ACCORDING TO SPECIFICATIONS.

25-YEARS STRUCTURAL / 10 YEARS MECHANICAL: TWO-POST MODELS A-7, SYSTEM IA-10, LC-12, LMF-12, TP-16, TP-18, TP-20, TP-26, TP-30. STRUCTURAL ITEMS COVERED INCLUDE LEG, CARRIAGE, SWING ARM AND SLIDER WELDMENTS (EXCLUDING NORMAL WEAR AREAS AS STATED ABOVE). MECHANICAL ITEMS COVERED INCLUDE ROLLER BEARINGS AND LIFTING CHAIN.

5-YEAR: MODELS TL-7.

3-YEAR: MODELS TR-19, TR-25, FL-25, TR-30, TR-33, TR-35, TR-50, TR-75, TR-110, TR-120, MP-SERIES LIFTS.

2-YEAR: MODELS PARALLELOGRAM SERIES LIFTS.

1-YEAR: MODELS TD-1000, TD-2000, CT-1000, USL-6000.

POWER UNIT (ALL LIFTS):

ALL POWER UNIT COMPONENTS (MOTOR, PUMP AND RESERVOIR) ARE GUARANTEED FOR TWO YEARS FOR PARTS, FROM THE DATE OF SHIPMENT FROM FACTORY, AGAINST DEFECTS IN WORKMANSHIP AND/OR MATERIALS WHEN THE LIFT IS INSTALLED, WIRED BY A LICENSED ELECTRICIAN AND USED ACCORDING TO SPECIFICATIONS.

ELECTRICAL COMPONENTS (ALL LIFTS):

ALL ELECTRICAL COMPONENTS (EXCLUDING MOTOR) ARE GUARANTEED FOR ONE YEAR FOR PARTS, FROM THE DATE OF SHIPMENT FROM FACTORY, AGAINST DEFECTS IN WORKMANSHIP AND/OR MATERIALS WHEN THE LIFT IS INSTALLED AND USED ACCORDING TO SPECIFICATIONS. SEE WARRANTY EXCEPTIONS SECTION FOR BATTERIES.

PNEUMATIC-AIR COMPONENTS (ALL LIFTS):

ALL PNEUMATIC (AIR) COMPONENTS (I.E. AIR CYLINDERS AND POPPET AIR VALVES) ARE GUARANTEED FOR ONE YEAR FOR PARTS, FROM THE DATE OF SHIPMENT FROM FACTORY, AGAINST DEFECTS IN WORKMANSHIP AND/OR MATERIALS WHEN THE LIFT IS INSTALLED AND USED ACCORDING TO SPECIFICATIONS. COMPONENTS IN A PNEUMATIC SYSTEM THAT ARE NOT PROPERLY REGULATED, LUBRICATED AND CONDITIONED WITH AN AIR DRYING SYSTEM ARE NOT COVERED UNDER WARRANTY.

HYDRAULIC COMPONENTS (ALL LIFTS):

EXCLUDING CYLINDERS AND PUMPS (COVERED IN OTHER SECTIONS), ALL HYDRAULIC COMPONENTS (I.E. VALVES AND FITTINGS) ARE GUARANTEED FOR ONE YEAR FOR PARTS, FROM THE DATE OF SHIPMENT FROM FACTORY, AGAINST DEFECTS IN WORKMANSHIP AND/OR MATERIALS WHEN THE LIFT IS INSTALLED AND USED ACCORDING TO SPECIFICATIONS.

HYDRAULIC CYLINDERS (MODEL SPECIFIC LIFTS):

THE FOLLOWING MODELS ARE GUARANTEED FOR 5 YEARS (PARTS ONLY), FROM DATE OF SHIPMENT FROM FACTORY, FOR HYDRAULIC CYLINDERS, AGAINST DEFECTS IN WORKMANSHIP AND/OR MATERIALS WHEN THE LIFT IS INSTALLED AND USED ACCORDING TO SPECIFICATIONS: TWO-POST MODELS A-7, SYSTEM IA-10, LC-12, LMF-12, TP-16, TP-18, TP-20, TP-26, TP-30.

ALL OTHER MODELS ARE GUARANTEED FOR TWO YEARS (PARTS ONLY), FROM THE DATE OF SHIPMENT FROM FACTORY, FOR HYDRAULIC CYLINDERS, AGAINST DEFECTS IN WORKMANSHIP AND/OR MATERIALS WHEN THE LIFT IS INSTALLED AND USED ACCORDING TO SPECIFICATIONS (EXCLUDING USL-6000, WHICH IS ONE YEAR).

THE “*EXTENDED LIFETIME CYLINDER SEAL WARRANTY*” (BELOW) IS APPLICABLE TO THE FOLLOWING MOHAWK LIFTS ONLY: TWO-POST MODELS A-7, SYSTEM IA-10, LC-12, LMF-12, TP-16, TP-18, TP-20, TP-26, TP-30. SEE MOHAWK’S “*EXTENDED LIFETIME CYLINDER SEAL WARRANTY*” FOR SPECIFIC WARRANTY PROVISIONS FOR HYDRAULIC CYLINDERS.

THE “*EXTENDED LIFETIME CYLINDER SEAL WARRANTY*” IS AS FOLLOWS:

AS THE ORIGINAL PURCHASER OF A MOHAWK LIFT MANUFACTURED BY MOHAWK LIFTS, LLC. YOU ARE ENTITLED TO AN EXTENDED CYLINDER SEAL WARRANTY.

MOHAWK’S OBLIGATION UNDER THIS WARRANTY IS LIMITED TO SUPPLYING MODEL SPECIFIC CYLINDER SEALS. THE CUSTOMER IS RESPONSIBLE FOR SHIPPING AND HANDLING OF THE SEALS. MOHAWK IS NOT RESPONSIBLE/LIABLE FOR THE REBUILD OF CYLINDERS BY OTHERS. THIS WARRANTY IS NON-TRANSFERABLE AND RUNS TO THE ORIGINAL PURCHASER ONLY.

STANDARD OPTIONS (ALL LIFTS):

ALL STANDARD OPTIONS OF THIS UNIT ARE GUARANTEED FOR ONE YEAR FOR PARTS, FROM THE DATE OF SHIPMENT FROM FACTORY, AGAINST DEFECTS IN WORKMANSHIP AND/OR MATERIALS WHEN LIFT IS INSTALLED AND USED ACCORDING TO SPECIFICATIONS.

CUSTOM LIFTS AND CUSTOM OPTIONS:

ALL “CUSTOM” LIFTS AND/OR “CUSTOM” OPTIONS ARE GUARANTEED FOR ONE YEAR FOR PARTS, FROM THE DATE OF SHIPMENT FROM FACTORY, AGAINST DEFECTS IN WORKMANSHIP AND/OR MATERIALS WHEN LIFT IS INSTALLED AND USED ACCORDING TO SPECIFICATIONS.

WARRANTY EXCEPTIONS (ALL LIFTS):

ADJUSTMENTS: THIS WARRANTY DOES NOT COVER CASUAL AND ROUTINE ADJUSTMENTS SUCH AS, BUT NOT LIMITED TO: FITTINGS, SENSORS AND SWITCHES, ANCHOR BOLT RE-TIGHTENING, OR ANY SHIMMING OR ADJUSTMENTS REQUIRED DURING A PROPER AND PROFESSIONAL INSTALLATION BY A QUALIFIED INSTALLER.

MAINTENANCE AND INSPECTIONS: IF THIS UNIT IS NOT MAINTAINED AND INSPECTED IN ACCORDANCE TO THE RELEVANT SECTIONS IN THE USERS MANUAL FOR THIS SPECIFIC MODEL, WARRANTY IS VOID. OSHA, ANSI AND MOHAWK REQUIRE THAT RECORDS MUST BE MAINTAINED TO PROVE THAT INSPECTIONS AND MAINTENANCE OF THIS UNIT HAVE BEEN ROUTINELY PERFORMED BY QUALIFIED INDIVIDUALS.

ABUSE: IF THIS UNIT IS FOUND TO BE OVERLOADED (PURPOSELY OR UNKNOWNLY), USED IN A SITUATION BEYOND ITS INTENDED FUNCTION, NOT MAINTAINED & INSPECTED REGULARLY, USED IN AN ABUSIVE ENVIRONMENT OR BEYOND NORMAL SHOP USAGE, THIS WARRANTY IS VOID IN ITS ENTIRETY.

NON-EXISTENT PROBLEMS: FOR SERVICE VISITS, PART REPLACEMENTS, LABOR, ETC. FOR PARTS FOUND TO BE NON-DEFECTIVE, OR FOR A UNIT DIS-FUNCTION THAT DOES NOT EXIST, IT IS THE LIFT OWNER THAT REQUESTED THE SERVICE VISIT WHO BEARS THE RESPONSIBILITY OF ALL RELATED EXPENSES.

BATTERIES: ALL BATTERIES CARRY THE BATTERY MANUFACTURER’S WARRANTY. MAINTENANCE REQUIREMENTS AND ABUSE PROVISIONS ARE AS STATED BY THE BATTERY MANUFACTURER. REFER TO BATTERY MANUFACTURER’S WARRANTY.

SPECIAL/MODIFIED INSTALLATIONS: THIS WARRANTY DOES NOT COVER “NON-TRADITIONAL” INSTALLATIONS. INSTALLATIONS ARE TO BE DONE ACCORDING TO SPECIFICATIONS, OR THE WARRANTY IS VOID.

WEARABLE COMPONENTS: SOME ITEMS ON LIFTS ARE SUBJECT TO NORMAL “WEAR AND TEAR” AND ARE NOT COVERED UNDER THIS WARRANTY.

NON-VEHICLE / RE-PURPOSED LIFTS: THIS WARRANTY DOES NOT COVER LIFTS THAT ARE “RE-PURPOSED” TO RAISE AND LOWER EQUIPMENT THAT ARE NOT CONSIDERED VEHICLES.

* THIS WARRANTY SUPERSEDES ALL OTHER WARRANTY POLICIES PREVIOUSLY STATED AND IN ALL OTHER MOHAWK PRODUCT SPECIFIC LITERATURE (MANUALS, BROCHURES, ETC.).

CONTENTS

TEXT

	PAGE
APPENDAGES.....	2
SPECIFICATIONS.....	3
PACKING LIST.....	4
INSTALLATION INSTRUCTIONS.....	5
SAFETY TIPS.....	6
PRE - OPERATION CHECK LIST / LIFTING PROCEDURES.....	7
MAINTENANCE PROCEDURES.....	8
TROUBLE SHOOTING.....	9
SERVICE CHART.....	10
MAINTENANCE CHART.....	10

PARTS & DIAGRAMS

	FIGURE	PAGE
RJ-15 SPECIFICATION DRAWING.....	RJ-15.....	12
RJ-25 SPECIFICATION DRAWING.....	RJ-25.....	13
RJ BEAM PLACEMENT.....	MAN081.....	14
RJ ASSEMBLY.....	MAN1000.....	15
RJ HYDRAULIC SYSTEM.....	MAN1001.....	16
RJ SUB-ASSEMBLY.....	MAN1002.....	17
RJ POWER UNIT ASSEMBLY.....	MAN1003.....	18
RJ CYLINDER ASSEMBLY.....	MAN1004.....	19
JP-15 & JP-25 ASSEMBLY.....	MAN1005.....	20
ROLLER ASSEMBLY, RH.....	ZZ1355-A-003.....	21
ROLLER ASSEMBLY, LH.....	ZZ1355-A-004.....	22
HYDRAULIC SCHEMATIC.....	025-050-015.....	23
FITTING LIST.....	025-050-013.....	24
ALI WARNING, CAUTION AND SAFETY MESSAGES.....		25

ALL INFORMATION, ILLUSTRATIONS, AND SPECIFICATIONS IN THIS MANUAL ARE BASED ON THE LATEST PRODUCT INFORMATION AVAILABLE AT THE TIME OF PRINTING. WE RESERVE THE RIGHT TO MAKE CHANGES AT ANY TIME WITHOUT NOTICE.

APPENDAGES

RECOMMENDATIONS BY THE INDIVIDUAL USER OR USING ORGANIZATION FOR IMPROVING THIS PUBLICATION OR ANY ASPECT OF THE PRODUCT ARE ENCOURAGED AND SHOULD BE FORWARDED IN WRITING TO:

**MOHAWK LIFTS, LLC.
PRODUCT IMPROVEMENTS
65 VROOMAN AVE.
AMSTERDAM, NY, 12010**

THIS IS NOT A VEHICLE LIFTING PROCEDURE MANUAL AND NO ATTEMPT IS MADE OR IMPLIED HEREIN TO INSTRUCT THE USER IN LIFTING METHODS PARTICULARLY TO THE INDIVIDUAL APPLICATION OF THE EQUIPMENT DESCRIBED IN THIS MANUAL. RATHER, THE CONTENTS OF THIS MANUAL ARE INTENDED AS A BASE LINE FOR OPERATION, MAINTENANCE, TROUBLE SHOOTING, AND PARTS LISTING OF THE UNIT AS IT STANDS ALONE AND AS IT IS INTENDED AND ANTICIPATED TO BE USED IN CONJUNCTION WITH OTHER EQUIPMENT.

PROPER APPLICATION OF THE EQUIPMENT DESCRIBED HEREIN IS LIMITED TO THE PARAMETERS DETAILED IN THE SPECIFICATIONS AND THE USES SET FORTH IN THE DESCRIPTIVE PASSAGES. ANY OTHER PROPOSED APPLICATION OF THIS EQUIPMENT SHOULD BE DOCUMENTED AND SUBMITTED IN WRITING TO MOHAWK LIFTS, LLC. FOR EXAMINATION. THE USER ASSUMES FULL RESPONSIBILITY FOR ANY EQUIPMENT DAMAGE, PERSONAL INJURY, OR ALTERATION OF THE EQUIPMENT DESCRIBED IN THIS MANUAL OR ANY SUBSEQUENT DAMAGES.

DO NOT WELD, APPLY HEAT, OR MODIFY THIS EQUIPMENT IN ANY MANNER WITHOUT WRITTEN AUTHORIZATION FROM MOHAWK LIFTS, LLC. CERTAIN ALLOY OR HEAT-TREATED COMPONENTS MAY BE DISTORTED OR WEAKENED, RESULTING IN AN UNSAFE CONDITION.

MOHAWK LIFTS, LLC. IS NOT RESPONSIBLE FOR DISTORTIONS, WHICH RESULT FROM WELDING ON THIS EQUIPMENT AFTER MANUFACTURING IS COMPLETED. UNAUTHORIZED WELDING, APPLICATION OF HEAT, OR MODIFICATION OF THIS EQUIPMENT VOIDS ANY AND / OR ALL APPLICABLE WARRANTIES COVERING THIS EQUIPMENT.

ALL WARRANTIES APPLICABLE TO THIS EQUIPMENT ARE CONTINGENT ON STRICT ADHERENCE TO THE MAINTENANCE SCHEDULES AND PROCEDURES IN THIS MANUAL.

KEEP ALL SHIELDS AND GUARDS IN PLACE. INSURE ALL SAFETY MECHANISMS ARE OPERABLE. KEEP HANDS, FEET, AND CLOTHING AWAY FROM POWER-DRIVEN AND MOVING PARTS.

WARNING

- DO NOT INSTALL THIS UNIT IN A PIT OR DEPRESSION DUE TO FIRE OR EXPLOSION RISK

CAUTION

THE EQUIPMENT DESCRIBED IN THIS MANUAL COULD BE POTENTIALLY DANGEROUS IF IMPROPERLY OR CARELESSLY OPERATED. FOR THE PROTECTION OF ALL PERSONS AND EQUIPMENT, ONLY COMPETENTLY TRAINED OPERATORS WHO ARE CRITICALLY AWARE OF THE PROPER OPERATING PROCEDURES, POTENTIAL DANGERS, AND SPECIFIC APPLICATION OF THIS EQUIPMENT SHOULD BE ALLOWED TO TOUCH THE CONTROLS AT ANY TIME.

SAFE OPERATION OF THIS EQUIPMENT IS DEPENDENT ON USE, IN COMPLIANCE WITH THE OPERATION PROCEDURES OUTLINED IN THIS MANUAL ALONG WITH THE MAINTENANCE AND INSPECTION PROCEDURES WITH CONSIDERATION OF PREVAILING CONDITIONS.

THE EQUIPMENT DESCRIBED IN THIS MANUAL IS NEITHER DESIGNED NOR INTENDED FOR ANY APPLICATION ALONE OR IN CONJUNCTION WITH ANY OTHER EQUIPMENT THAT INVOLVES THE LIFTING OR MOVING OF **PERSONS**.

ALWAYS CONSULT THE VEHICLE LIFTING GUIDE FOR THE PROPER LIFTING POINTS ON ANY VEHICLE. THESE GUIDES ARE AVAILABLE FROM THE VEHICLE MANUFACTURERS. AFTER LIFTING THE VEHICLE TO THE DESIRED HEIGHT, ALWAYS LOWER THE UNIT ONTO THE MECHANICAL SAFETIES. THE FORMING OF GOOD OPERATIONAL WORK HABITS WILL ELIMINATE OVERSIGHTS IN THE USE OF PROVIDED SAFETY DEVICES.

RJ-15 & RJ-25 SPECIFICATIONS**PERFORMANCE SPECIFICATIONS**

LIFTING TYPE	ELEC / HYDRAULIC
LIFTING CAPACITY – RJ-15	15,000 LBS.
LIFTING CAPACITY – RJ-25	25,000 LBS.
LIFTING SPEED (SINGLE CYLINDER)	20 SECONDS (EMPTY)
LOWERING SPEED (SINGLE CYLINDER)	10 SECONDS (EMPTY)
LIFTING HEIGHT (STROKE)	6 INCHES
WIDTH BETWEEN CYLINDERS	10.44 INCHES MIN 35 INCHES MAX
OVERALL WIDTH	25.38 INCHES
OVERALL LENGTH	51 INCHES
OVERALL HEIGHT	10 INCHES
SHIPPING WEIGHT	362 LBS

POWER UNIT SPECIFICATIONS

BRAND NAME	MONARCH
MODEL	M-404-0132 (601-300-042)
POWER UNIT TYPE	HORIZONTAL
MOTOR VOLTAGE	115 VAC
FLA AT RATED CAPACITY	13.2 Amps
MOTOR HORSEPOWER	1
MOTOR PHASE	SINGLE
MOTOR CYCLE / HERTZ	60
MOTOR SPEED (RPM)	3450
PUMP FLOW (GPM)	0.80 GPM @ 3450 RPM
RELIEF VALVE SETTING – RJ-15	1200 PSI
RELIEF VALVE SETTING – RJ-25	1750 PSI
WORKING PRESSURE – RJ-15	1027 PSI
WORKING PRESSURE – RJ-25	1511 PSI
RESERVOIR CAPACITY	1.2 GALLON
HYDRAULIC FLUID MEDIUM	DEXRON III

RJ-15 & RJ-25 PACKING LIST

PART NUMBER	PART DESCRIPTION	QTY.
025-002-065	SHIPPING CREATE	1
xxx	JACKING BEAM ASSY (RJ-15 or RJ-25)	1
025-002-035	LIFTING PAD (STANDARD)	2
025-002-014	LIFTING PAD, AXLE/YOKE TYPE	2
025-002-128	HEIGHT ADAPTER, 6 INCH	2
025-002-127	HEIGHT ADAPTER, 3 INCH	2
025-002-126	HEIGHT ADAPTER BRACKET	1
601-600-022	BAG, ZIP LOC 9" X 12"	1
601-310-005	BREATHER CAP	1
600-640-001	BOLT, 5/16-18 NC X 1"	2
600-710-003	WASHER, FLAT, 5/16	2
690-600-001	NUT, NYLON, 5/16-18 NC	2
600-680-006	NUT, PLAIN, 1/4-20 NC	4
600-720-007	WASHER, LOCK, 1/4	4
600-710-004	WASHER, FLAT, 1/4	8
600-640-004	BOLT, 1/4-20 NC X 1" LG. HEX HEAD CAP SCR	4
019-000-012	MANUAL, RJ-15 & RJ-25	1
025-003-137	HANDLE, ¼ X 2" FLAT X 59 ¼	1
	INSPECTED BY:	

INSTALLATION INSTRUCTIONS

IMPORTANT

READ THIS MANUAL IN ITS ENTIRETY. BE FAMILIAR WITH PART NAMES AND HAVE A GOOD UNDERSTANDING OF HOW THIS UNIT IS TO BE ASSEMBLED AND OF HOW INDIVIDUAL PARTS OPERATE, BEFORE ASSEMBLING THE UNIT.
REFER TO ANSI/ALI ALIS, SAFETY REQUIREMENTS FOR INSTALLATION AND SERVICE OF AUTOMOTIVE LIFTS.

SET THE OFF SIDE TRACK ON THE LIFT UNIT OUT AWAY FROM THE MAIN SIDE TRACK. THE INSIDE DIMENSION BETWEEN THE MAIN AND OFF SIDE TRACK IS TO BE TWO INCHES WIDER THAN THE OUTSIDE DIMENSION OF THE JACKING BEAM.

PLACE THE JACKING BEAM BETWEEN THE TRACKS. SUPPORT THE UNIT OFF OF THE TRACKS WITH TWO PIECES OF 4 X 4 X 12 INCH DUNNAGE.

REPLACE THE OFF SIDE TRACK BACK TO IT'S ORIGINAL POSITION OF 48" FROM THE MAINSIDE TRACK.

NOTE

THE MEASUREMENT BETWEEN THE TRACKS AT THE FORE AND AFT END OF THE UNIT MUST BE THE SAME.

RAISE THE LIFT UNIT INSURING THAT THE WHEELS ON THE JACKING BEAM ARE MAKING PROPER CONTACT WITH TRACK RAILS

FINE ADJUSTMENTS TO THE WHEELS CAN BE MADE BY LOOSENING THE PIN SET SCREW AND ADJUSTING WHEEL POSITION. WHEN THE ADJUSTMENT IS COMPLETE TIGHTEN THE SET SCREWS.

SAFETY TIPS

PLEASE POST THE **AUTOMOTIVE LIFT SAFETY TIPS CARD**, (A COPY IS INCLUDED IN THE PARTS BOX) WHERE THEY WILL BE CONSTANTLY REMINDED TO YOUR LIFT OPERATOR. FOR INFORMATION SPECIFIC TO THE LIFT, ALWAYS REFER TO THE MOHAWK MANUAL.

- | | |
|--|--|
| <ul style="list-style-type: none"> • INSPECT YOUR LIFT DAILY. NEVER OPERATE IT IF IT MALFUNCTIONS OR IF IT HAS BROKEN OR DAMAGED PARTS. REPAIRS SHOULD BE MADE WITH ORIGINAL MOHAWK PARTS. • OPERATING CONTROLS ARE DESIGNED TO CLOSE WHEN RELEASED. DO NOT BLOCK OPEN OR OVERRIDE THEM. • NEVER OVERLOAD YOUR LIFT BEYOND STATED LIFTING CAPACITY. RATED CAPACITY IS SHOWN ON NAMEPLATE AFFIXED TO THE LIFT. • ONLY TRAINED AND AUTHORIZED PERSONNEL SHOULD DO POSITIONING OF VEHICLE AND OPERATION OF THE LIFT. • DO NOT ALLOW CUSTOMERS OR BY- STANDERS TO OPERATE THE LIFT OR TO BE IN A LIFTING AREA DURING ITS OPERATION. ONLY PROPERLY TRAINED PERSONNEL SHOULD BE ALLOWED TO OPERATE LIFT. • NEVER RAISE A VEHICLE WITH PERSONS INSIDE. • ALWAYS KEEP LIFT AREA FREE OF OBSTRUCTIONS, DEBRIS, GREASE, AND OIL. • PERFORM THE PRE-OPERATION CHECK LIST, PER INSTRUCTIONS, BEFORE RAISING VEHICLE TO DESIRED HEIGHT. • BEFORE DRIVING VEHICLE INTO THE BAY, POSITION RJ CYLINDERS, PADS AND WHEEL | <p>CHOCKS OUT OF THE WAY TO PROVIDE UNOBSTRUCTED CLEARANCE. DO NOT HIT OR RUN OVER CYLINDERS, ADAPTERS, OR WHEEL STOPS. THIS COULD DAMAGE LIFT OR VEHICLE.</p> <ul style="list-style-type: none"> • LOAD VEHICLE ON JACK PADS TO CONTACT AT THE VEHICLE MANUFACTURER'S RECOMMENDED LIFTING POINTS. RAISE JACK CYLINDERS UNTIL SUPPORTS CONTACT VEHICLE. CHECK SUPPORTS FOR SECURE CONTACT WITH VEHICLE. RAISE JACK CYLINDERS TO DESIRED WORKING HEIGHT. • NOTE THAT WITH SOME VEHICLES, THE REMOVAL OR INSTALLATION OF COMPONENTS MAY CAUSE A CRITICAL SHIFT IN THE CENTER OF GRAVITY, AND RESULT IN RAISED VEHICLE INSTABILITY. REFER TO THE VEHICLE MANUFACTURER'S SERVICE MANUAL FOR RECOMMENDED PROCEDURES WHEN VEHICLE COMPONENTS ARE REMOVED. • BEFORE LOWERING LIFT, BE SURE TOOL TRAY'S, STANDS, ETC. ARE REMOVED FROM UNDER VEHICLE. RELEASE LOCKING DEVICES BEFORE ATTEMPTING TO LOWER LIFT. • BEFORE REMOVING VEHICLE FROM THE LIFT AREA, ENSURE THAT BOTH RJ HYDRAULIC CYLINDERS HAVE BEEN COMPLETELY RETRACTED, AND THAT THE LIFTING PADS AND HEIGHT ADAPTERS HAVE BEEN PLACED IN THEIR PROPER PLACE. |
|--|--|

PRE - OPERATION CHECK LIST

TRAINED OPERATOR

- THE OPERATOR MUST BE FULLY TRAINED AND QUALIFIED TO SAFELY AND EFFECTIVELY OPERATE THIS EQUIPMENT OF THIS SPECIFIC MAKE AND MODEL.

ABSENCE OF OBSTRUCTIONS

- THE TOTAL WORK AREA MUST BE FREE OF ANY AND ALL OBSTRUCTIONS AND BE GENERALLY CLEAN. (FREE OF OIL AND DEBRIS)

VISUAL INSPECTION

- THOROUGHLY INSPECT THE UNIT WITH A TRAINED EYE, NOTING ANY PROBLEM AREAS. INSPECT THE FLOOR AND THE ANCHORING FASTENERS AS WELL. REPORT ANY QUESTIONABLE ITEMS.

NO LOAD PERFORMANCE CHECK

- NO EXTERNAL FLUID LEAKS.
- NO BLEED DOWN.
- EFFORTLESS AND SIMULTANEOUS MOVEMENT.
- LEVEL LIFTING (WHEN BOTH VALVES PULLED)
- CONTROLS FUNCTION PROPERLY.

PREVIOUS DAY'S OPERATION REPORT

- VERIFY WITH SUPERVISOR THAT THERE WAS NO PROBLEMS EXPERIENCED THE PREVIOUS DAY. IF THERE WERE ANY PROBLEMS, VERIFY THAT ALL NECESSARY REPAIRS HAVE BEEN COMPLETED.

LIFTING PROCEDURES

LIFT PREPARATION AND VEHICLE POSITIONING

- PERFORM PRE-OPERATION CHECK LIST ITEM BY ITEM.
- POSITION THE VEHICLE ONTO THE LIFT SO THAT ALL TIRES ARE SECURELY ON THE TRACKS.
- POSITION THE VEHICLE CENTERED ON THE TRACKS, SO THAT THE WEIGHT IS DISTRIBUTED EVENLY, FORE AND AFT.

NOTE:

ALIGN THE VEHICLE'S CENTER OF GRAVITY WITH THE CENTERLINE OF THE TRACKS.

- PLACE THE WHEEL CHOCKS IN A POSITION SO THAT THE VEHICLE WILL BE SECURE ON THE LIFT. PLACE CHOCKS OPPOSING EACH OTHER, PREFERABLY ON THE END OF THE VEHICLE THAT IS NOT GOING TO BE RAISED BY THE JACKING BEAM.
- PLACE THE JACKING BEAM INTO POSITION, ENABLING LIFTING FROM EITHER FRONT OR REAR AXLE.
- PLUG THE JACKING BEAM INTO THE POWER SUPPLY (CONTROLLED BY THE LIMIT SWITCH SYSTEM).

TO RAISE

- ENGAGE THE POWER BUTTON ON THE POWER UNIT.
- PULL OUT THE DIRECTIONAL CONTROL LEVERS TO RAISE THE JACK CYLINDERS. ENSURE PROPER PAD ENGAGEMENT WITH FRAME OR AXLE.
- PLACE THE LIFTING PADS PER MFG'S RECOMMENDED LIFT POINTS FOR THE VEHICLE. REFER TO ALI/LP-GUIDE, ALI/SM01-2 "LIFTING IT RIGHT" GUIDE, AND REFER TO THE RECOMMENDED LOCATION AND FORMAT OF THE VEHICLE LIFT POINT LABEL PER ANSI/SAE J2184-OCT92.

CAUTION:

IF PROPER AND SAFE LIFTING POINTS ON THE FRAME OF THE VEHICLE CAN NOT BE REACHED BY THE LIFTING PADS, DO NOT RAISE THIS VEHICLE!

ADAPTER USAGE AND LIMITATIONS:

THE USE OF HEIGHT ADAPTERS IS COMMON FOR MOST LIFTING SITUATIONS TO ACCOMMODATE HIGH FRAMES AND LOW OVERHANGING BODIES OF VEHICLES.

THESE JACKS ARE ONLY ALLOWED TO USE 2 ADAPTERS WHEN STACKED: ONE (1) 6" AND ONE (1) 3" ADAPTER, RESULTING IN 9" MAXIMUM STACKING HEIGHT. LONGER CUSTOM SINGLE PIECE ADAPTERS ARE AVAILABLE UPON REQUEST.

- RAISE VEHICLE TO DESIRED HEIGHT.

TO LOWER

- INSPECT THE LIFTING AREA TO INSURE THAT ALL PERSONNEL AND DEBRIS HAVE BEEN CLEARED FROM THE LIFTING AREA.
- PUSH IN THE DIRECTIONAL CONTROL LEVERS TO LOWER THE JACK CYLINDERS
- LOWER THE VEHICLE FULLY OR TO DESIRED HEIGHT.
- BEFORE REMOVING VEHICLE FROM THE LIFT AREA, ENSURE THAT BOTH RJ HYDRAULIC CYLINDERS HAVE BEEN COMPLETELY RETRACTED, AND THAT THE LIFTING PADS AND HEIGHT ADAPTERS HAVE BEEN PLACED IN THEIR PROPER PLACE.
- REMOVE WHEEL CHOCKS BEFORE REMOVING VEHICLE FROM LIFT.

MAINTENANCE PROCEDURES

-- TRAINED LIFT SERVICE PERSONNEL ONLY --

REFER TO ANSI/ALI ALIS, SAFETY REQUIREMENTS FOR INSTALLATION AND SERVICE OF AUTOMOTIVE LIFTS.

DAILY

- PERFORM THE PRE-OPERATION CHECK LIST.
- REPORT ANY AND ALL EQUIPMENT MALFUNCTIONS IMMEDIATELY.
- CLEAN ALL MOVING PARTS. (IT IS NOT RECOMMENDED TO GREASE THE INSIDE OF THE CHANNEL ON THE POST, SWING ARMS OR SWING ARM RESTRAINTS.) IF OXIDIZATION IS OCCURRING USE A LIGHT LUBRICANT. (WD - 40 OR EQUIVALENT)
- KEEP AREA AROUND THIS EQUIPMENT FREE OF DIRT, SAND, WATER, ETC.

WEEKLY

- PERFORM THE DAILY OPERATION CHECK LIST.
- WIPE CLEAN, THE CYLINDERS' WIPER SEALS AND THE INSIDE OF EACH CYLINDER COMPARTMENT TO REMOVE ACCUMULATED DEBRIS.
- VERIFY FLUID LEVEL. WITH THE UNIT FULLY LOWERED, THE FLUID LEVEL WILL BE 1/2 INCH BELOW THE BREATHER CAP PORT. USE DEXRON III AS REPLACEMENT FLUID.

MONTHLY

- INSPECT LIFTING COMPONENTS FOR DEFORMATION, WEAR OR CORROSION.
- INSPECT ALL HYDRAULIC COMPONENTS FOR LEAKS, DEFORMATION, WEAR OR CORROSION.
- TIGHTEN ALL FASTENERS AND HYDRAULIC FITTINGS AS REQUIRED.

1. ALL O - RING BOSS FITTINGS JAM NUTS ARE TO BE TIGHTENED TO 15-FOOT POUNDS TORQUE.
2. ALL PIPE FITTINGS, IF LEAKING IS TO BE REMOVED, RE-SEALED, AND RE - INSTALLED. (SELECT - UNITE THREAD SEALANT OR EQUIVALENT ON FITTING THREADS)

SEMI- ANNUAL

- QUALIFY / RE-QUALIFY ALL PERSONNEL IN THE SAFE OPERATION OF THIS UNIT.
-

ANNUALLY

- REPLACE AND RE-BLEED THE HYDRAULIC FLUID. ALWAYS USE A CLEAN FUNNEL AND FILTER. USE DEXRON III HYDRAULIC FLUID.
- INSPECT ALL BEARINGS FOR UNUSUAL OR EXCESSIVE WEAR. (REPLACE IF NEEDED)
- PERFORM THE DAILY, WEEKLY, AND MONTHLY MAINTENANCE PROCEDURES.

PART REPLACEMENT NOTES

- REPLACE ALL WORN OR BROKEN PARTS WITH GENUINE LIFT MANUFACTURER SUPPLIED PARTS (FROM MOHAWK RESOURCES LTD. ONLY)
- ALL REPLACEMENTS OF PARTS ARE TO BE PERFORMED BY TRAINED LIFT SERVICE PERSONNEL ONLY.
- UPON PART REPLACEMENT, LIFT MUST PASS A FULL LIFT INSPECTION AS DEEMED SUITABLE BY TRAINED LIFT SERVICE PERSONNEL.

TROUBLE SHOOTING

WARNING: NEVER ATTEMPT TO LOOSEN HYDRAULIC FITTINGS, OR OVERRIDE SAFETY DEVICES IN AN ATTEMPT TO CORRECT A PROBLEM. ALL TESTS ARE TO BE PERFORMED WITH **NO** VEHICLE.

POSSIBLE CAUSE	SOLUTION
MOTOR NOT STARTING	
TRIPPED BREAKER	RESET BREAKER / VERIFY PROPER BREAKER SIZE.
NO POWER TO MOTOR	VERIFY POWER SUPPLY TO MOTOR.
SWITCH BURNED OUT	VERIFY SWITCH ACTIVATION. CONSULT AN ELECTRICIAN. CONTACT MOHAWK SERVICE DEPARTMENT.
MOTOR WIRING BURNED OUT	CONSULT AN ELECTRICIAN. CONTACT MOHAWK SERVICE DEPARTMENT.
NOT LIFTING LOAD (OR RAISING SLOWLY)	
UNIT OVERLOADED	VEHICLE IS TOO HEAVY TO BE RAISED. COMPARE VEHICLE WEIGHT WITH JACK LIFTING CAPACITY.
PRESSURE RELIEF SETTING NEEDS ADJUSTMENT (SET TOO LOW)	REFER TO POWER UNIT SPECIFICATIONS. CONTACT MOHAWK SERVICE DEPARTMENT.
PRESSURE RELIEF CONTAMINATION	REFER TO POWER UNIT SPECIFICATIONS. REMOVE AND CLEAN DEBRIS FROM VALVE ASSEMBLY.
INCORRECT VOLTAGE TO POWER UNIT	REFER TO POWER UNIT SPECIFICATIONS. CONSULT AN ELECTRICIAN
HYDRAULIC SYSTEM CONTAMINATION	CYCLE UNIT EMPTY SEVERAL TIMES. IF NEGATIVE RESULT, FLUSH OUT SYSTEM AND REPLACE WITH DEXRON III ATF.
MOTOR SMOKING	
WINDINGS BURNED OUT IN MOTOR	CONTACT MOHAWK SERVICE DEPARTMENT.
SHORT IN CIRCUIT	CONSULT AN ELECTRICIAN
WRONG VOLTAGE	CONSULT AN ELECTRICIAN
POWER UNIT MAKING NOISE	
IMPELLER FAN COVER DENTED	IF DAMAGED, REPLACE.
LOW FLUID LEVEL IN TANK	FILL COMPLETELY (WHEN CYLINDERS RETRACTED). USE DEXRON III ATF.
RELIEF VALVE ACTIVATED	VEHICLE IS TOO HEAVY OR VALVE SETTING IS TOO LOW. CONTACT MOHAWK SERVICE DEPARTMENT.
SUCTION LINE NOT TIGHT OR NOT CONNECTED	DISCONNECT POWER SOURCE AND LOCKOUT UNIT. CONTACT MOHAWK SERVICE DEPARTMENT.

SERVICE CHART

MODEL: _____
 SERIAL NUMBER: _____
 DATE OF INSTALLATION: _____

DATE	PART REPLACED / SERVICED	SERVICE COMPANY	SERVICED BY

MAINTENANCE CHART

DATE	MAINTENANCE PERFORMED	SERVICE COMPANY	SERVICED BY

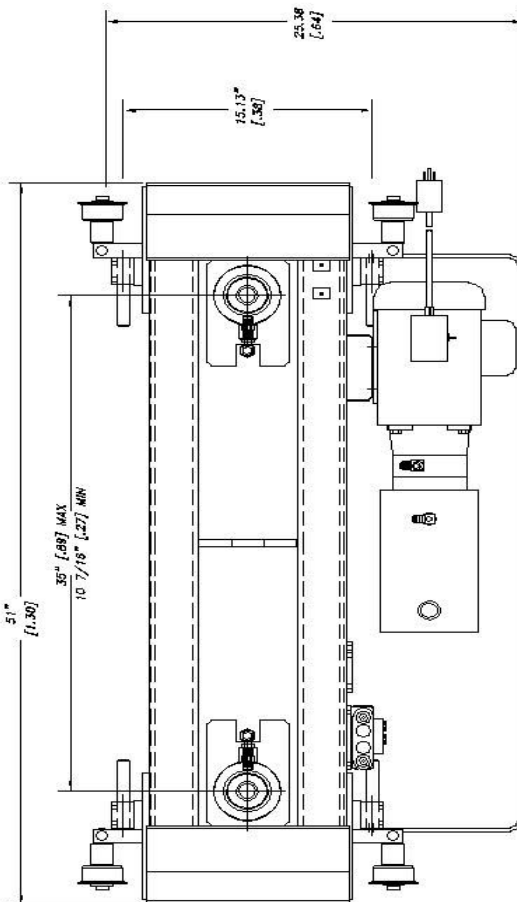
MOHAWK

MODELS RJ-15 & RJ-25

PARTS & DIAGRAMS

MOHAWK LIFTS, LLC.

65 VROOMAN AVE.
AMSTERDAM, NY 12010
TOLL FREE: 1-800-833-2006
LOCAL: 1-518-842-1431
FAX: 1-518-842-1289
INTERNET: WWW.MOHAWKLIFTS.COM
E-MAIN: SERVICE@MOHAWKLIFTS.



MODEL RJ-15 JACKING BEAM
ELECTRIC/HYDRAULIC JACKING BEAM
CAPACITY: 15,000 LBS



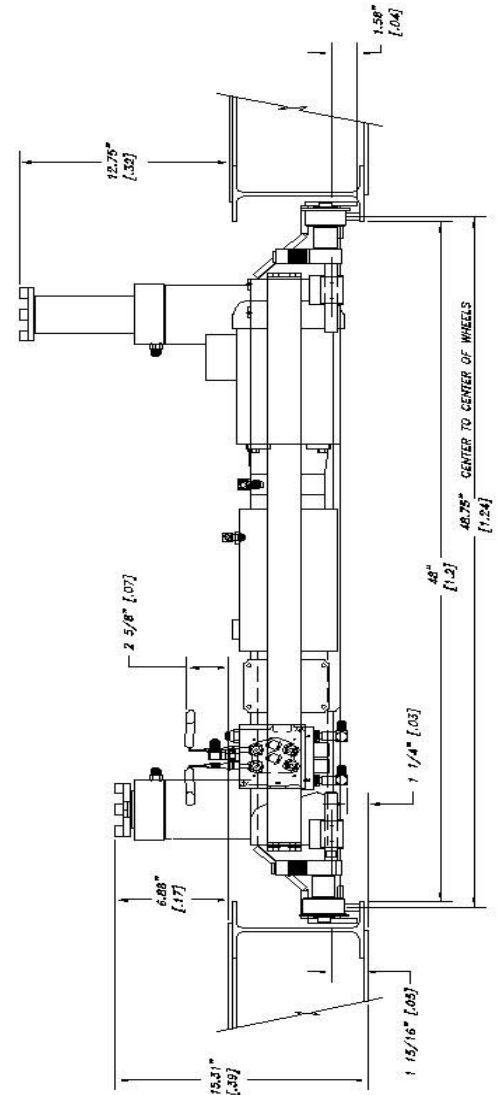
SPECIFICATIONS

CAPACITY	15,000 LBS. (USING BOTH CYLINDERS)
LIFTING SPEED	20 SECONDS (UP CYCLE) ONE CYLINDER NO LOAD
LIFTING SPEED	40 SECONDS (UP CYCLE) TWO CYLINDER NO LOAD
LIFTING SPEED	20 SECONDS (DOWN CYCLE) ONE CYLINDER NO LOAD
LIFTING SPEED	30 SECONDS (DOWN CYCLE) TWO CYLINDER NO LOAD
MOTOR RATING	1 HP, 110 VOLTS, SINGLE PHASE, 60 CYCLE
SYNCHRONIZATION	MANUAL
CYLINDER P&O HEIGHT	6 7/8" MINIMUM
CYLINDER P&O HEIGHT	12 3/4" MAXIMUM
MAXIMUM P&O HEIGHT WITH ADAPTORS	22 3/4" (WITH 10" ADAPTOR)
BEAM WIDTH	25 5/8"
BEAM LENGTH	51"
WIDTH BETWEEN LIFTING PADS	10 TO 17 1/8" MIN. 35" MAX
WEIGHT	SEE LBS.
HYDRAULIC SAFETY SYSTEMS	AUTOMATIC, ALL POSITION (FLOW LIMITING VALVE AT EACH CYLINDER)
CYLINDERS	TWO (2)
DRIVE SYSTEM	DIRECT
5" FRAME ADAPTORS (STACKABLE)	TWO (2) INCLUDED AS STANDARD EQUIPMENT
7 1/2" FRAME ADAPTORS (STACKABLE)	TWO (2) INCLUDED AS STANDARD EQUIPMENT
10" FRAME ADAPTORS (STACKABLE)	TWO (2) INCLUDED AS STANDARD EQUIPMENT
LIFTING PADS	TWO (2) (TEETH)
LIFTING PADS	TWO (2) (YOKES, FOR USE WITH AXLES)
STEEL WHEELS	(4) PER JACKING BEAM



MOHAWK RESOURCES LTD.
P.O. BOX 110
65 VROOMAN AVENUE
AMSTERDAM, NY 12010

NOTE: MOHAWK RESOURCES, LTD. RESERVES THE RIGHT TO MAKE CHANGES WITHOUT NOTICE.



NOTICE OF CONFIDENTIAL INFORMATION

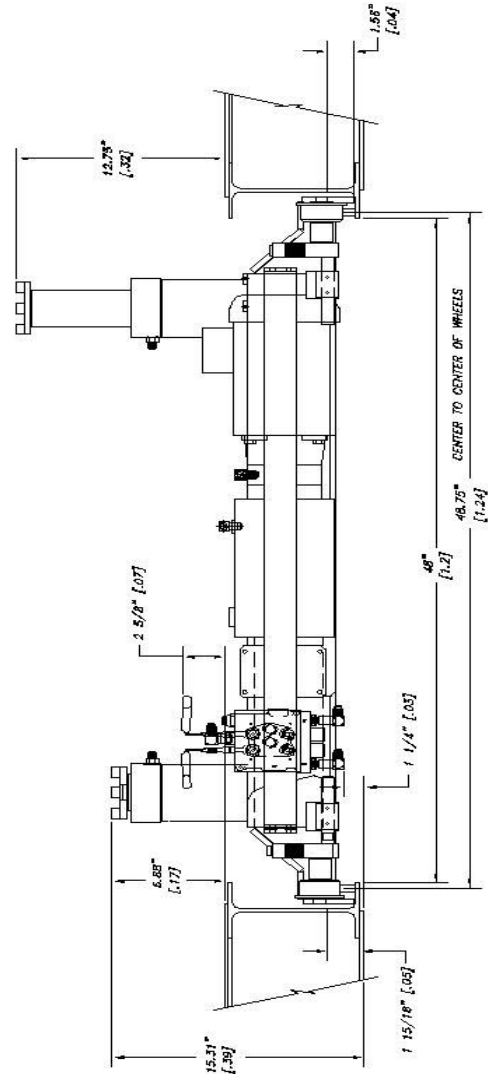
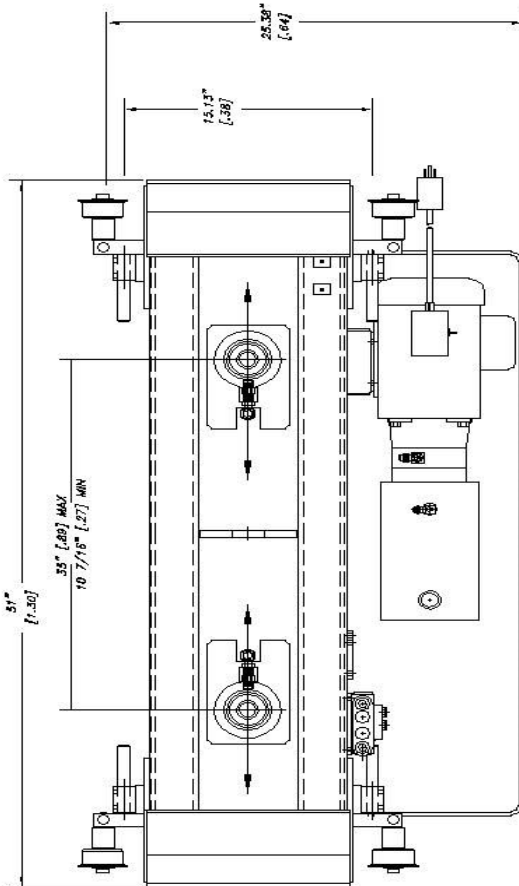
UNITS = INCH (METER)

D-12B

[illegible]

REV.	DATE	BY	APP'D.
1	12/10	6608E	
VIEWS CHANGED TO REFLECT NEW ROLLERS			

MODEL RJ-25A JACKING BEAM ELECTRIC/HYDRAULIC JACKING BEAM CAPACITY: 25,000 LBS



SPECIFICATIONS

CAPACITY.....	25,000 LBS. (USING BOTH CYLINDERS)
LIFTING SPEED.....	20 SECONDS (UP CYCLE) ONE CYLINDER NO LOAD
LIFTING SPEED.....	40 SECONDS (UP CYCLE) TWO CYLINDER NO LOAD
LIFTING SPEED.....	10 SECONDS (DOWN CYCLE) ONE CYLINDER NO LOAD
LIFTING SPEED.....	20 SECONDS (DOWN CYCLE) TWO CYLINDER NO LOAD
MOTOR RATING.....	1 HP, 110 VOLTS, SINGLE PHASE, 60 CYCLE
SYNCHRONIZATION.....	MANUAL
CYLINDER PAD HEIGHT.....	6 7/8" MINIMUM
CYLINDER PAD HEIGHT.....	22 3/4" MAXIMUM
MAXIMUM PAD HEIGHT WITH ADAPTORS.....	22 3/4" (WITH 10" ADAPTORS)
BEAM WIDTH.....	51"
BEAM LENGTH.....	10 7/16" MIN, 35" MAX
WIDTH BETWEEN LIFTING PADS.....	352 LBS.
WEIGHT.....	352 LBS.
HYDRAULIC SAFETY SYSTEMS.....	AUTOMATIC, ALL POSITION (FLOW LIMITING VALVE AT EACH CYLINDER)
CYLINDERS.....	TWO (2)
DRIVE SYSTEM.....	DIRECT
5" FRAME ADAPTORS (STACKABLE).....	TWO (2) INCLUDED AS STANDARD EQUIPMENT
7 1/2" FRAME ADAPTORS (STACKABLE).....	TWO (2) INCLUDED AS STANDARD EQUIPMENT
10" FRAME ADAPTORS (STACKABLE).....	TWO (2) INCLUDED AS STANDARD EQUIPMENT
LIFTING PADS.....	TWO (2) (TEETH)
LIFTING PADS.....	TWO (2) (TONGUE FOR USE WITH AXLES)
STEEL WHEELS.....	(4) PER JACKING BEAM

MOHAWK RESOURCES LTD.

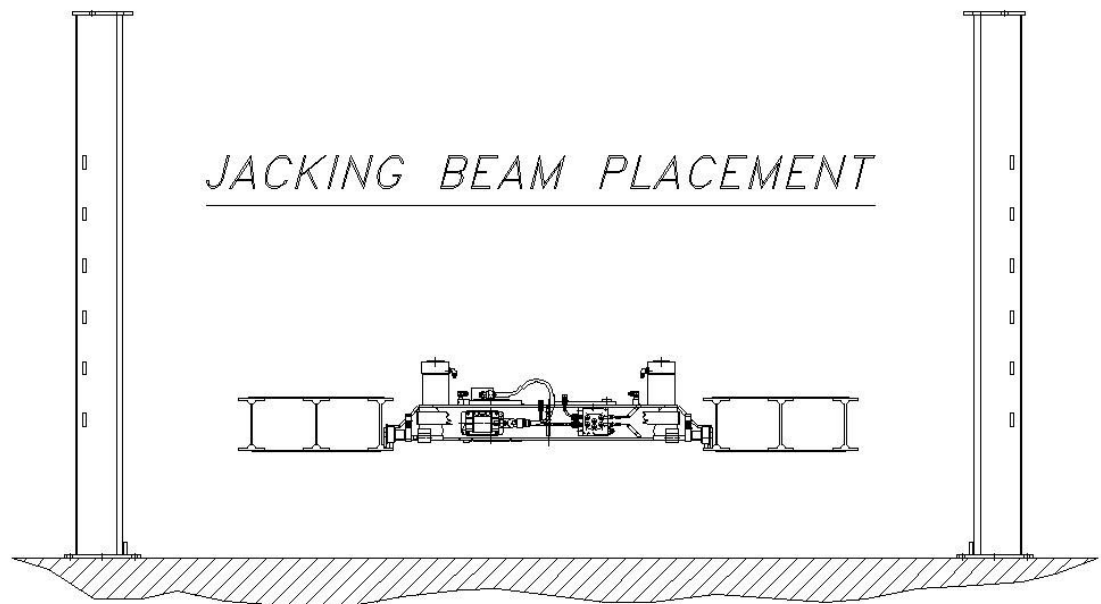
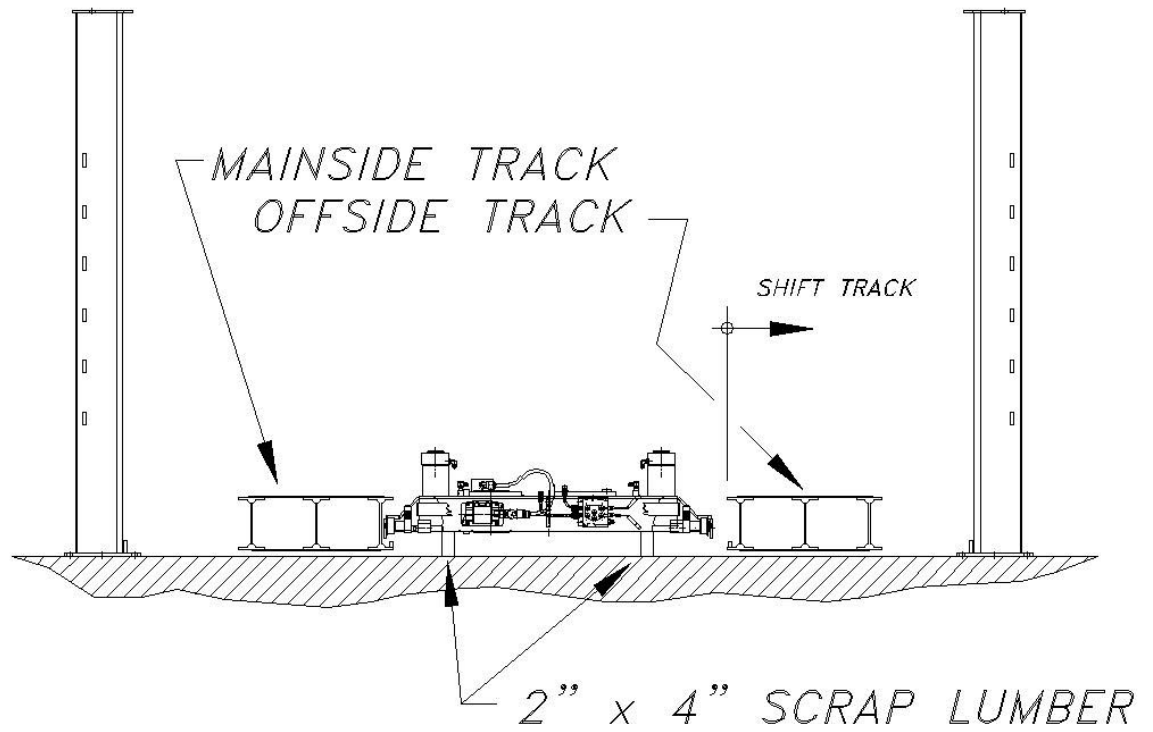
P.O. BOX 110
65 VROOMAN AVENUE
AMSTERDAM, NY 12010
PH: (800) 833-2006
IN NY: (518) 542-1431
FAX: (518) 542-1289

NOTE: MOHAWK RESOURCES, LTD. RESERVES THE RIGHT TO MAKE CHANGES WITHOUT NOTICE.

NOTICE OF CONFIDENTIAL INFORMATION			
<p>1. BEHOLD ALL GROUP OWNERS & MANAGERS 2. TRUSTS OTHERWISE SPECIFIED, OTHERWISE 3. FINES TO BE 100.00% 4. FINES TO BE 100.00% 5. FINES TO BE 100.00% 6. FINES TO BE 100.00% 7. FINES TO BE 100.00% 8. FINES TO BE 100.00% 9. FINES TO BE 100.00% 10. FINES TO BE 100.00%</p>			
<p>1. BEHOLD ALL GROUP OWNERS & MANAGERS 2. TRUSTS OTHERWISE SPECIFIED, OTHERWISE 3. FINES TO BE 100.00% 4. FINES TO BE 100.00% 5. FINES TO BE 100.00% 6. FINES TO BE 100.00% 7. FINES TO BE 100.00% 8. FINES TO BE 100.00% 9. FINES TO BE 100.00% 10. FINES TO BE 100.00%</p>			

UNITS = INCH (METER)

D-size

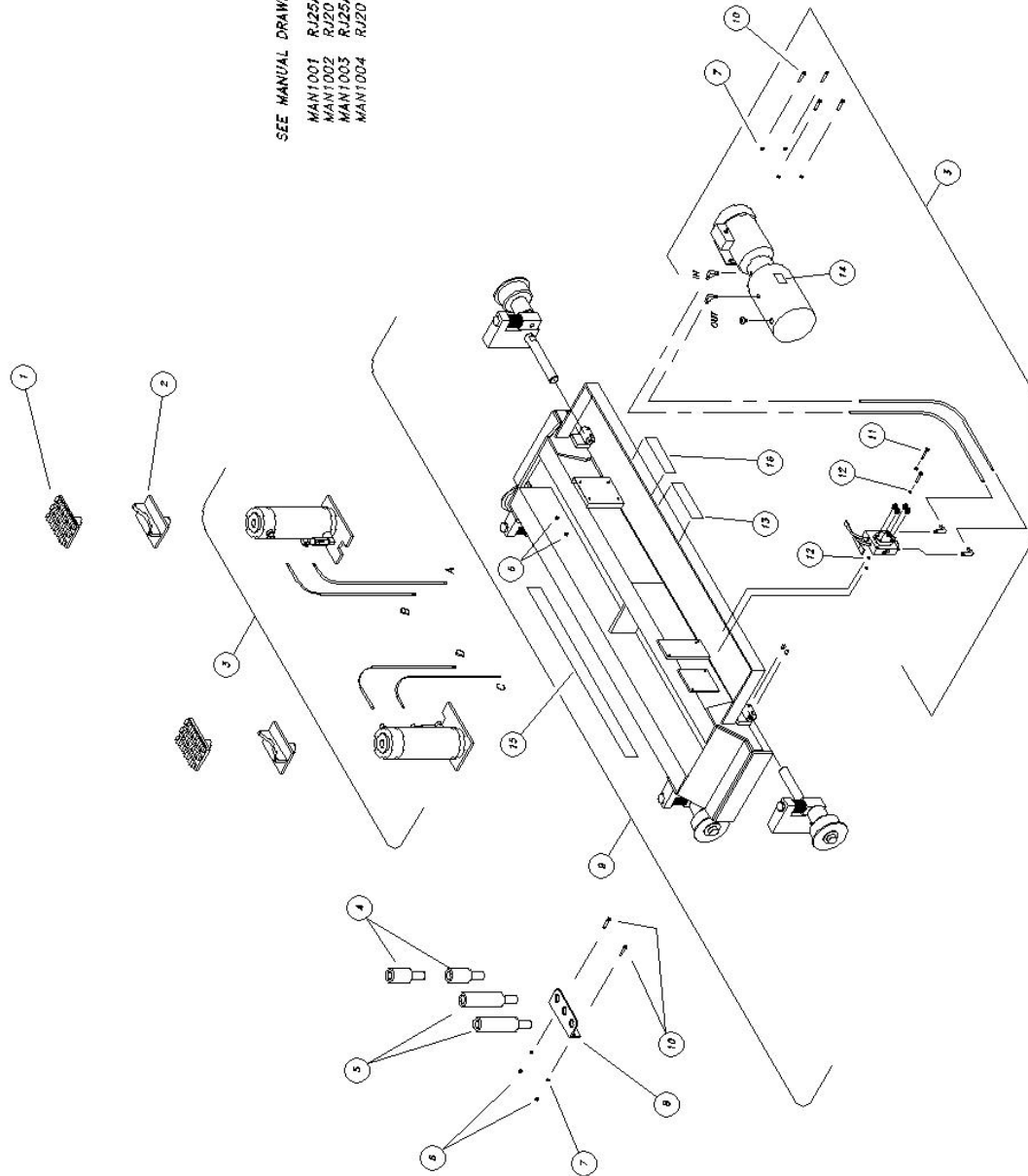


MAN081
DATE: 3/00

MAN1000
REV-F 9/12

SEE MANUAL DRAWINGS BELOW FOR FURTHER INFORMATION

MAN1001 RJ25A HYDRAULIC SYSTEM
MAN1002 RJ20 & RJ25A JACKING BEAM SUB-ASSEMBLY
MAN1003 RJ25A POWER UNIT ASSEMBLY
MAN1004 RJ20 & RJ25A CYLINDER ASSEMBLY

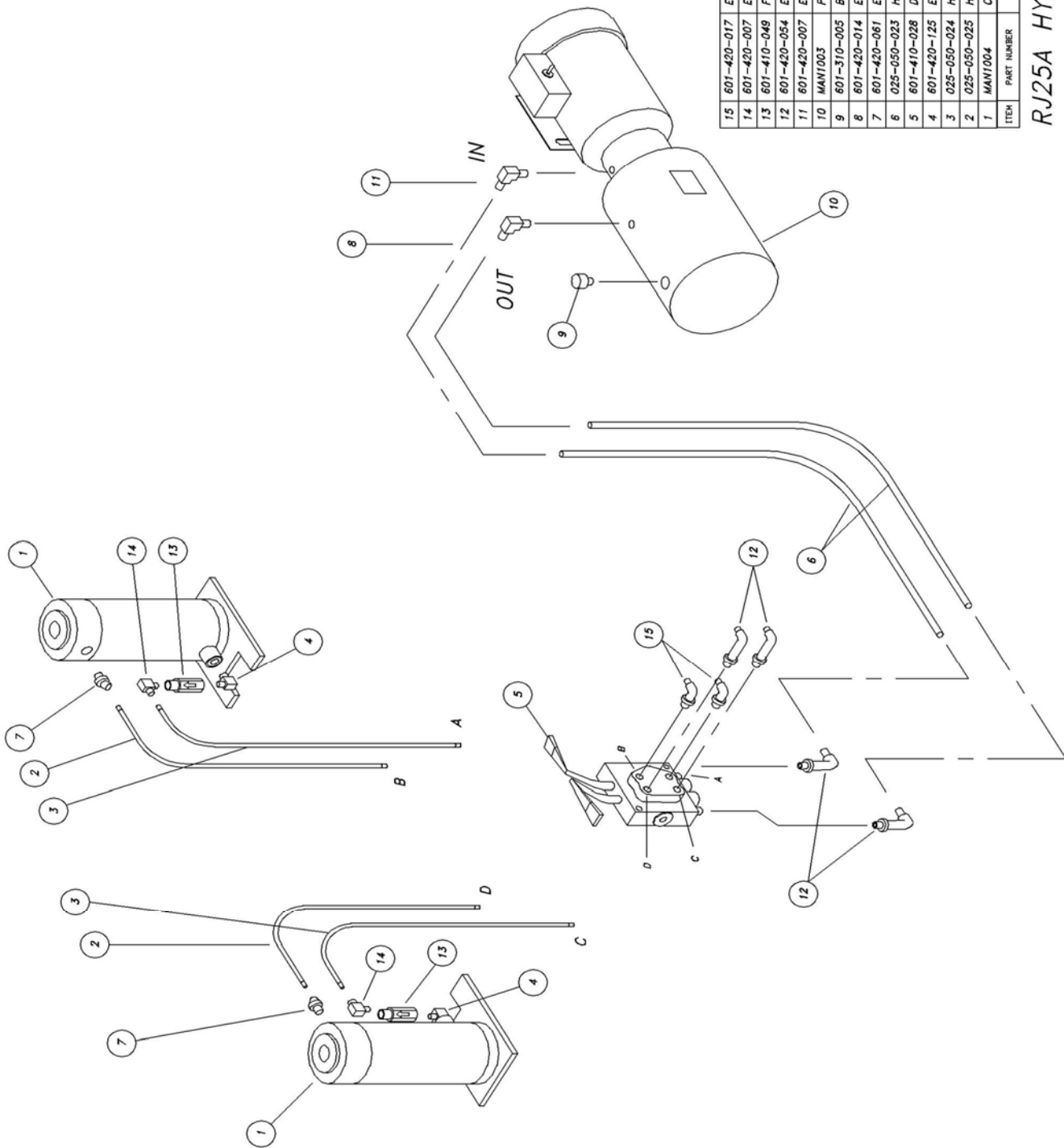


ITEM	PART NUMBER	DESCRIPTION	QTY
16	601-800-128	DECAL, TOTAL AGGREGATE JACKING CAPACITY	1
15	601-800-135	MOHAWK DECAL (2 7/16" x 28 1/8")	1
14	601-800-034	WARNING LABEL (2 x 3 1/2)	1
13	601-800-084	CAPACITY LABEL, 25,000 LBS (1 7/8 x 6 1/2)	1
12	600-710-004	WASHER, FLAT, 1/4	4
11	600-840-035	BOLT, 1/4-20 NC x 1 3/4	2
10	600-840-001	BOLT, 3/16-18 NC x 1"	6
9	MAN1002	JACKING BEAM SUB-ASSEMBLY	1
8	025-002-128	HEIGHT ADAPTER BRACKET	1
7	600-710-003	WASHER, FLAT, 5/16 NC	6
6	600-680-001	NUT, LOCK, 5/16-18 NC	6
5	025-002-128	HEIGHT ADAPTER, 6"	2
4	025-002-127	HEIGHT ADAPTER, 3"	2
3	MAN1001	HYDRAULIC SYSTEM	1
2	025-002-014	LIFTING PAD (CYCLE)	2
1	025-002-035	LIFTING PAD (RD CAST)	2
17			
18			
19			
20			
21			
22			
23			
24			
25			
26			
27			
28			
29			
30			
31			
32			
33			
34			
35			
36			
37			
38			
39			
40			
41			
42			
43			
44			
45			
46			
47			
48			
49			
50			
51			
52			
53			
54			
55			
56			
57			
58			
59			
60			
61			
62			
63			
64			
65			
66			
67			
68			
69			
70			
71			
72			
73			
74			
75			
76			
77			
78			
79			
80			
81			
82			
83			
84			
85			
86			
87			
88			
89			
90			
91			
92			
93			
94			
95			
96			
97			
98			
99			
100			

RJ25A ISOMETRIC FINAL ASSEMBLY
(025-050-021)

FILE: MAN1000
DATE: 5/96

MAN1001
REV-E 10/00

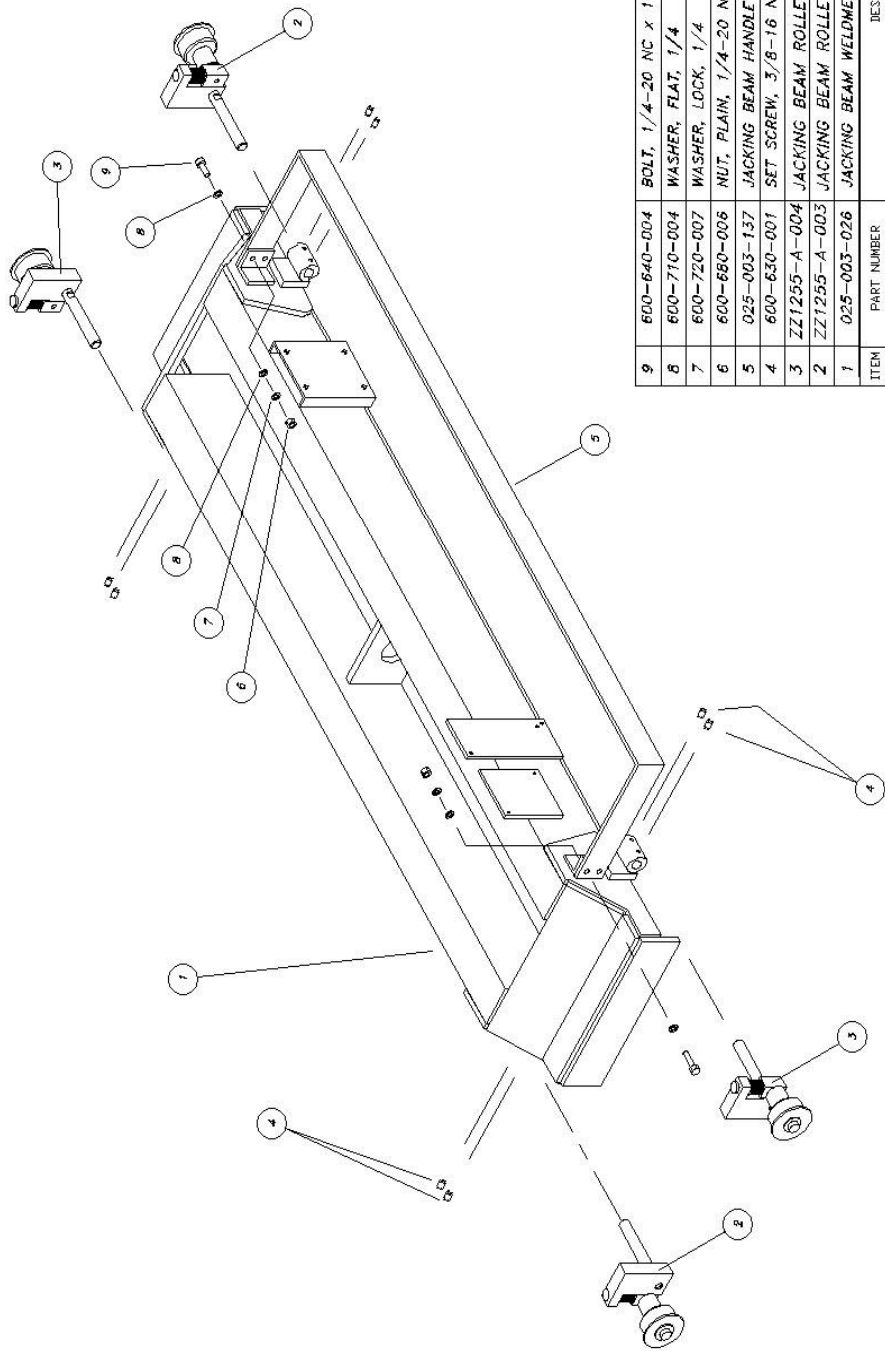


ITEM	PART NUMBER	DESCRIPTION	QTY
1	MAN1004	CYLINDER ASSEMBLY	2
2	025-050-025	HOSE ASSEMBLY, 36"	2
3	025-050-024	HOSE ASSEMBLY, 34"	2
4	601-420-125	ELBOW, 90°, 3/8 NPT MALE TO #6 ORB MALE	2
5	601-410-028	DIRECTIONAL CONTROL VALVE, 2000 PSI, 8 GPM	1
6	025-050-023	HOSE ASSEMBLY, 18"	2
7	601-420-061	ELBOW, 45°, #6 ORB TO #6 JIC	2
8	601-420-014	ELBOW, 90°, 1/4 MALE PIPE TO #6 JIC	1
9	601-310-005	BREATHING CAP	1
10	MAN1003	POWER UNIT ASSEMBLY	1
11	601-420-007	ELBOW, 90°, 3/8 MALE PIPE TO #6 JIC	1
12	601-420-054	ELBOW, 90°, #6 ORB TO #6 JIC (TALL)	4
13	601-410-049	FLOW REGULATING VALVE, 2 GPM	2
14	601-420-017	ELBOW, 90°, #6 ORB TO #6 JIC	2
15	601-420-017	ELBOW, 90°, #6 ORB TO #6 JIC	2

RJ25A HYDRAULIC SYSTEM

MAN1002

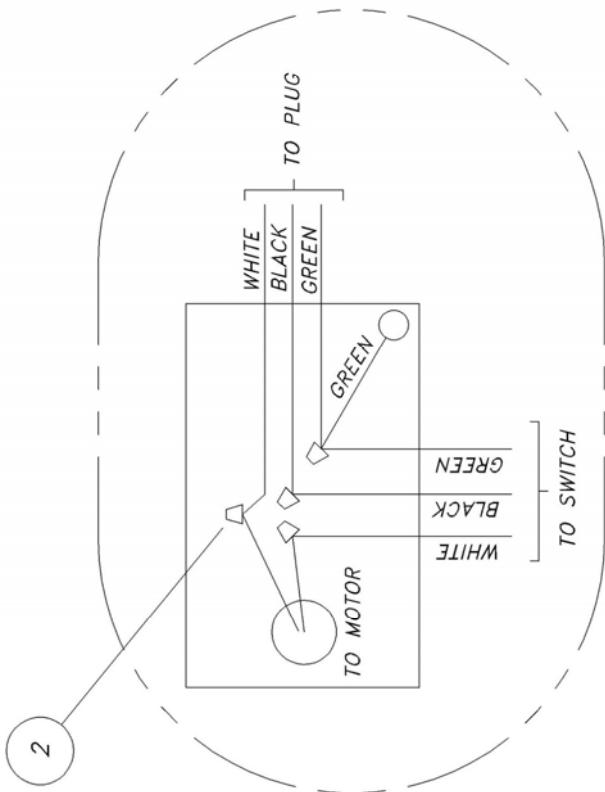
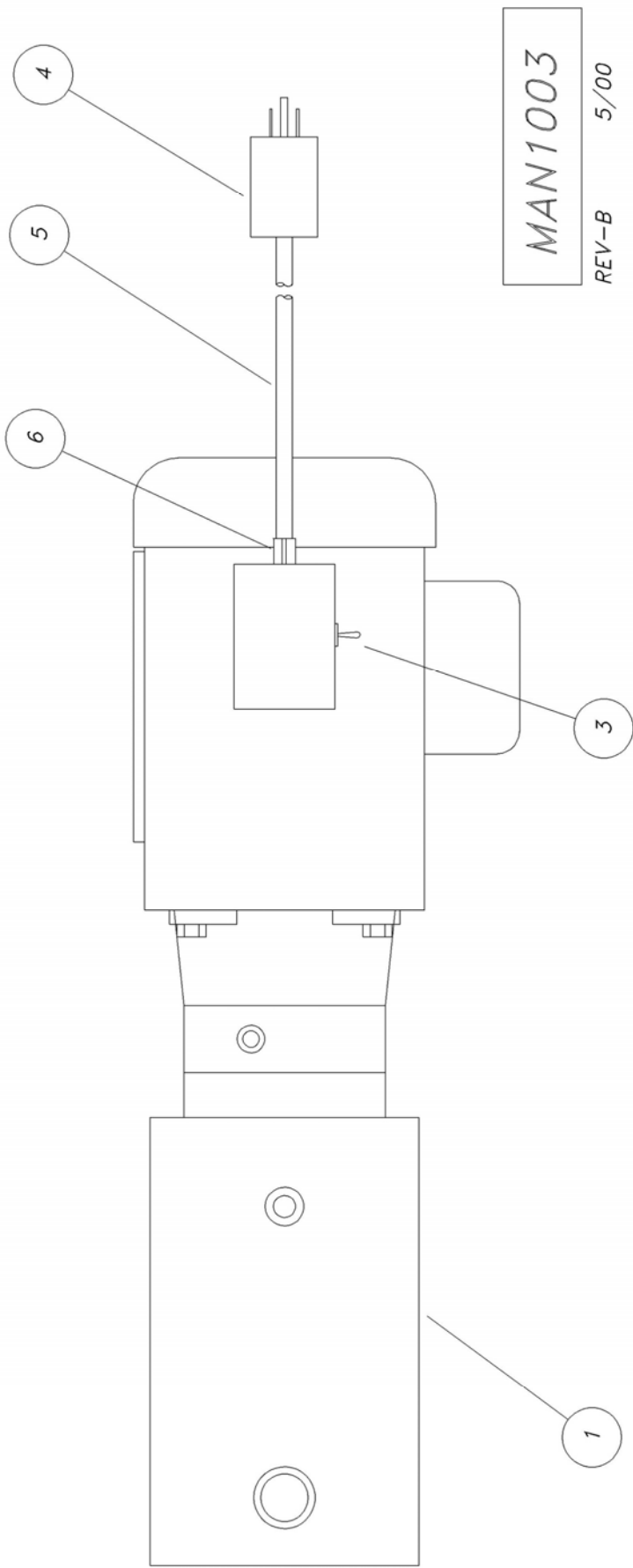
REV-B12/10



ITEM	PART NUMBER	DESCRIPTION	QTY
9	600-640-004	BOLT, 1/4-20 NC x 1" LG, HEX HEAD CAP	4
8	600-710-004	WASHER, FLAT, 1/4	8
7	600-720-007	WASHER, LOCK, 1/4	4
6	600-650-006	NUT, PLAIN, 1/4-20 NC	4
5	025-003-137	JACKING BEAM HANDLE	1
4	600-630-001	SET SCREW, 3/8-16 NC x 1/2 LG	8
3	ZZ1255-A-004	JACKING BEAM ROLLER ASSEMBLY (LH)	1
2	ZZ1255-A-003	JACKING BEAM ROLLER ASSEMBLY (RH)	1
1	025-003-026	JACKING BEAM WELDMENT	1

RJ-15 & RJ-20 & RJ-25 JACKING BEAM SUB/ASSEMBLY

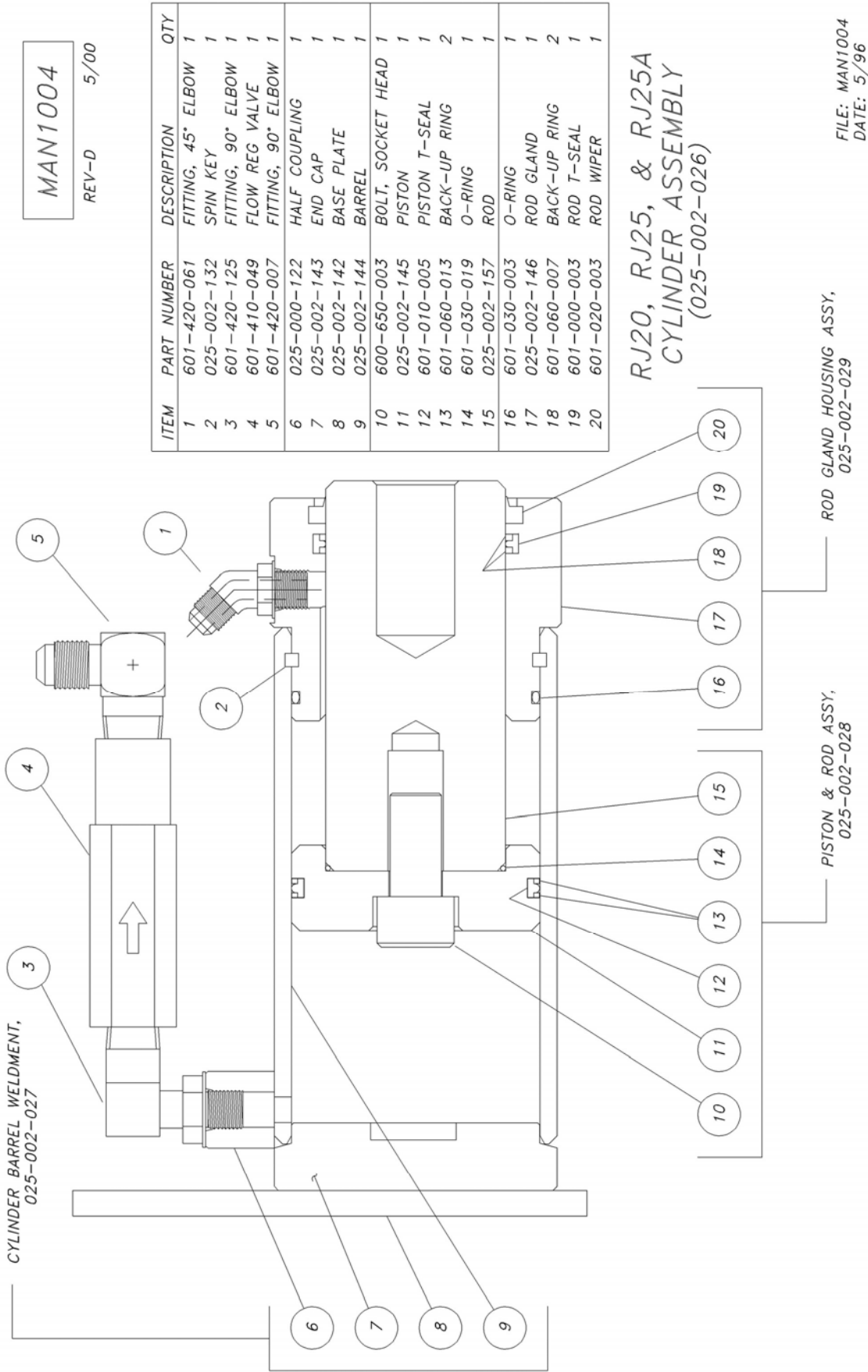
FILE: MAN1002
DATE: 12/10



ITEM	PART NUMBER	DESCRIPTION	QTY
6	601-140-038	CONNECTOR, CORD, STRAIGHT, 3/8	1
5	025-002-419	CONDUCTOR, 14/3 x 72"	1
4	601-170-005	PLUG, 3 WIRE	1
3	601-110-007	TOGGLE SWITCH	1
2	601-150-009	NUT, WIRE, YELLOW	4
1	601-300-042	POWER UNIT, 1 HP, SINGLE PHASE	1

RJ-15 & RJ-25 POWER UNIT ASSEMBLY
(025-050-020)

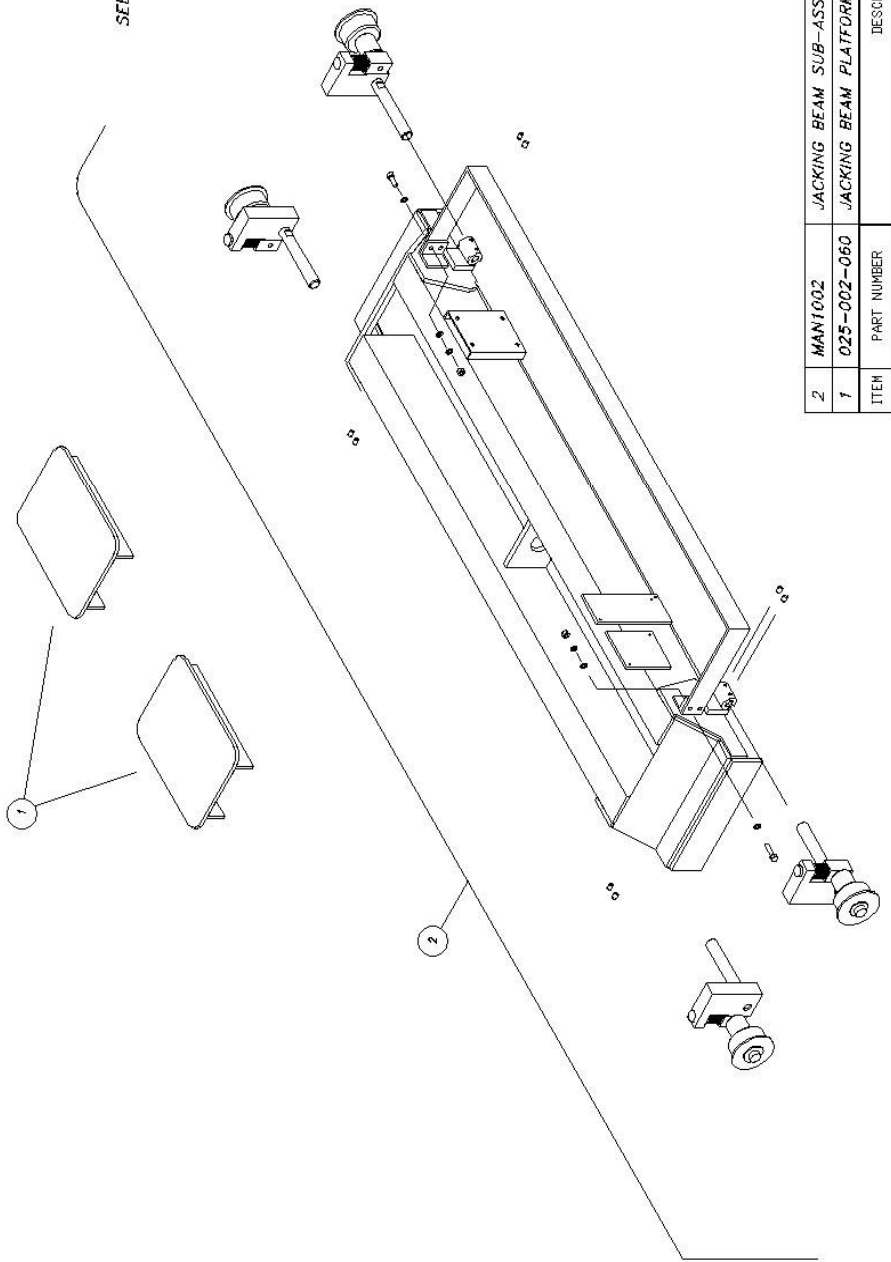
FILE: MAN1003
DATE: 5/96



MAN1005

REV-A 5/00

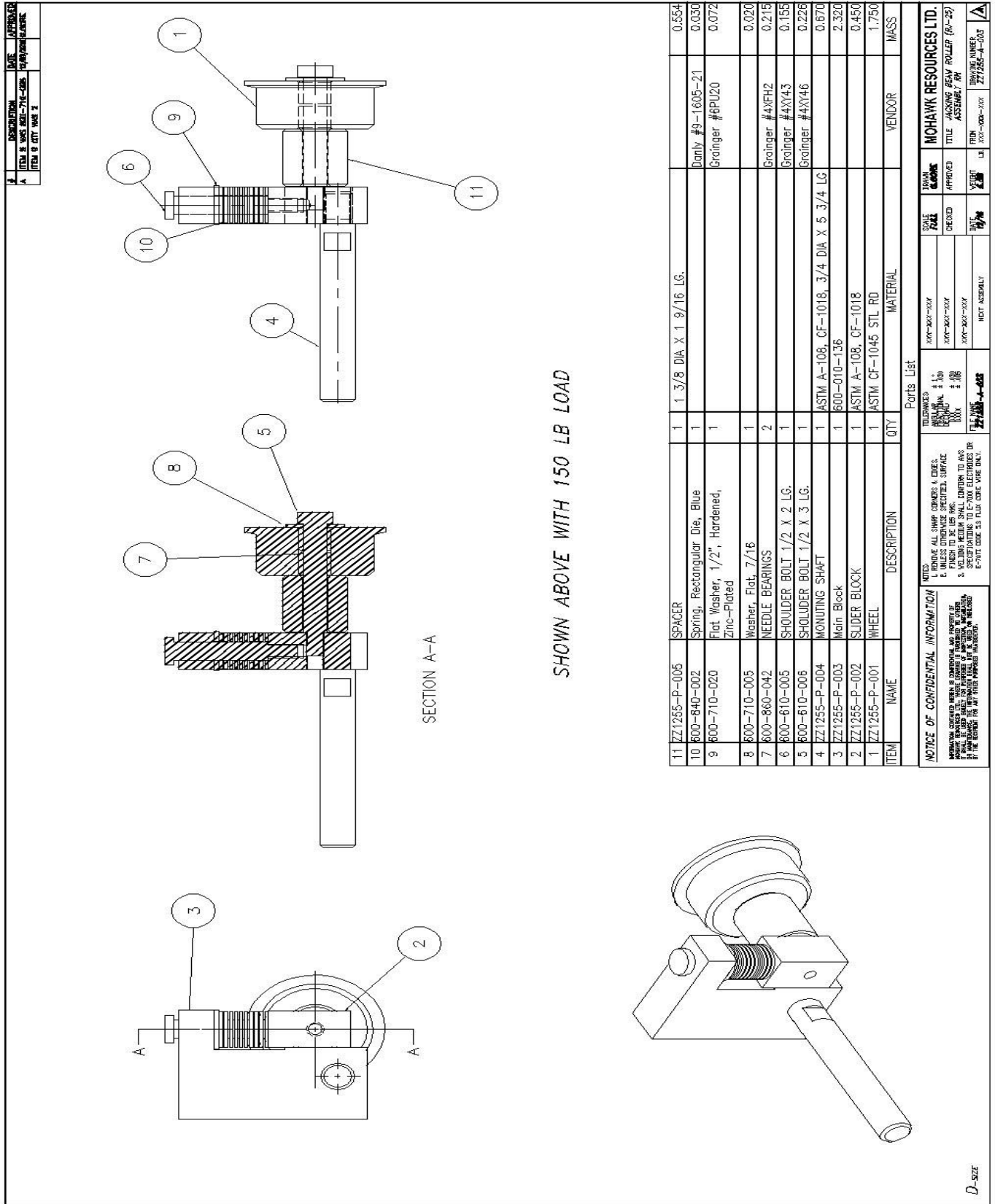
SEE MAN1002 FOR FURTHER INFORMATION

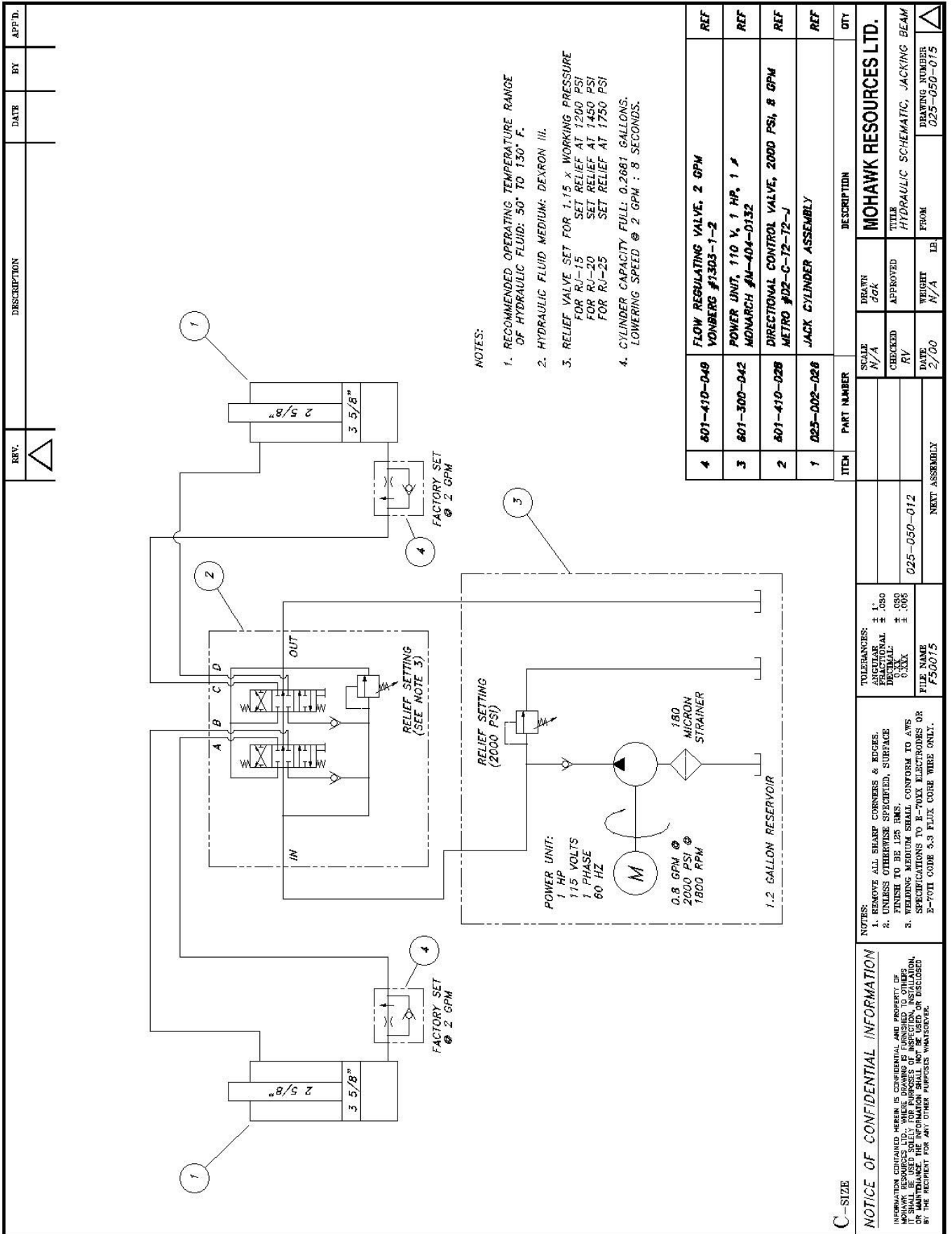


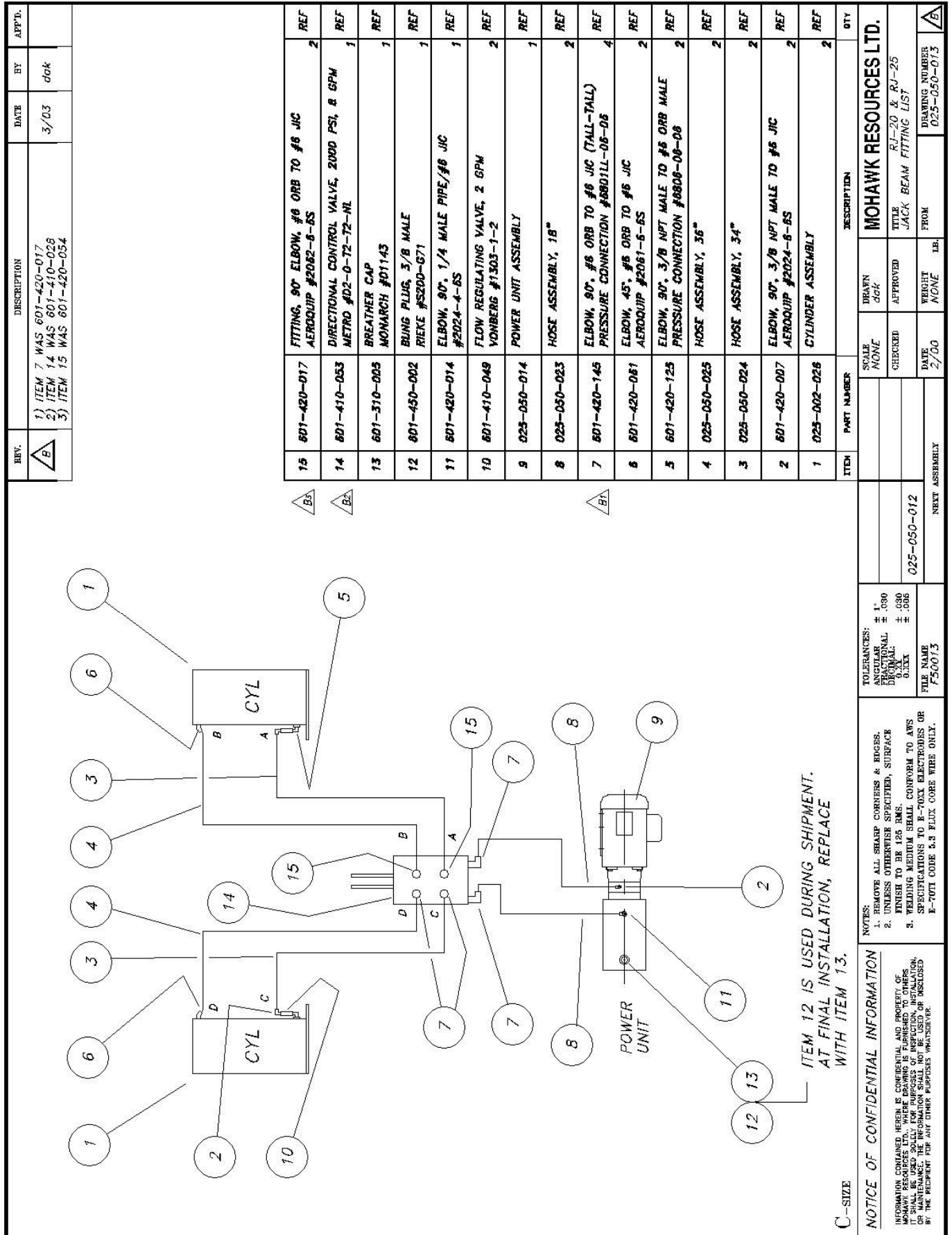
ITEM	PART NUMBER	DESCRIPTION	QTY
2	MAN1002	JACKING BEAM SUB-ASSEMBLY	1
1	025-002-060	JACKING BEAM PLATFORM WELDMENT	2

JP-15 & JP-25 ISOMETRIC FINAL ASSEMBLY

FILE: MAN1005
DATE: 5/96







REV.	DESCRIPTION	DATE	BY	APPD.
1	1) ITEM 7 WAS 601-420-017	3/03	dak	
2	2) ITEM 14 WAS 601-410-028			
3	3) ITEM 15 WAS 601-420-054			

ITEM	PART NUMBER	DESCRIPTION	QTY
15	601-420-017	FITTING, 90° ELBOW, #8 ORB TO #8 JIC AERQUIP #2062-8-BS	2
14	601-410-053	DIRECTIONAL CONTROL VALVE, 2000 PSI, 8 GPM METRO #D2-0-72-NL	1
13	601-310-005	BREATHING CAP MONARCH #01143	1
12	601-450-002	BUNG PLUG, 3/8 MALE RIEKE #S200-G71	1
11	601-420-014	ELBOW, 90°, 1/4 MALE PIPE/#8 JIC #2024-4-BS	1
10	601-410-049	FLOW REGULATING VALVE, 2 GPM VONBERG #1303-1-2	2
9	025-050-014	POWER UNIT ASSEMBLY	1
8	025-050-023	HOSE ASSEMBLY, 18"	2
7	601-420-145	ELBOW, 90°, #8 ORB TO #8 JIC (TALL-TALL) PRESSURE CONNECTION #68011-06-06	4
6	601-420-061	ELBOW, 45°, #8 ORB TO #8 JIC AERQUIP #2061-5-BS	2
5	601-420-125	ELBOW, 90°, 3/8 NPT MALE TO #8 ORB MALE PRESSURE CONNECTION #6808-06-06	2
4	025-050-025	HOSE ASSEMBLY, 36"	2
3	025-050-024	HOSE ASSEMBLY, 34"	2
2	601-420-007	ELBOW, 90°, 3/8 NPT MALE TO #8 JIC AERQUIP #2024-6-BS	2
1	025-002-026	CYLINDER ASSEMBLY	2

C-SIZE

NOTICE OF CONFIDENTIAL INFORMATION

INFORMATION CONTAINED HEREIN IS CONFIDENTIAL AND PROPERTY OF MOHAWK RESOURCES LTD. WHERE DRAWING IS FURNISHED TO OTHERS IT SHALL BE USED SOLELY FOR PURPOSES OF INSPECTION, INSTALLATION, OR REPAIR OF THE EQUIPMENT AND NOT BE REPRODUCED OR DISCLOSED BY THE RECIPIENT FOR ANY OTHER PURPOSES WHATSOEVER.

NOTES:
1. REMOVE ALL SHARP CORNERS & EDGES.
2. UNLESS OTHERWISE SPECIFIED, SURFACE FINISH TO BE 125 RMS.
3. WELDING MEDIUM SHALL CONFORM TO AWS SPECIFICATIONS TO E-70XX ELECTRODES OR E-70XX CODE 5.5 FLUX CORE WIRE ONLY.

TOLERANCES:
DIMENSIONAL: ± .030
HOLE: ± .006
TEXT: ± .006

FILE NAME: F50013

DATE: 2/00

WEIGHT: NONE

FROM: 025-050-013

DRAWING NUMBER: 025-050-013

MOHAWK RESOURCES LTD.

RJ-20 & RJ-25

JACK BEAM FITTING LIST



The messages and pictographs shown are generic in nature and are meant to generally represent hazards common to all automotive lifts regardless of specific style

Funding for the development and validation of these labels was provided by the Automotive Lift Institute, PO Box 33116 Indialantic, FL 32903.

They are protected by copyright. Set of labels may be obtained from ALI or its member companies.

© 1992 by ALI, Inc.

ALI/WL200w



The messages and pictographs shown are generic in nature and are meant to generally represent hazards common to all automotive lifts regardless of specific style.

Funding for the development and validation of these labels was provided by the Automotive Lift Institute, PO Box 33116 Indialantic, FL 32903

They are protected by copyright. Set of labels may be obtained from ALI or its member companies

© 1992 by ALI, Inc.

ALI/WL200c



MOHAWK LIFT PRODUCTS

The Lifts You Can't Wear Out



TWO POST

Model System IA-10



Model TP-20



FOUR POST

Model TR-75



MOBILE COLUMN

Model MP-18-007



PARALLELOGRAM

Model 75-32-F



VERTICAL RISE

Model V-77-30S

MOHAWK LIFTS

Mohawk Lifts, LLC.

P.O. Box 110 • 65 Vrooman Ave

Amsterdam, NY 12010

Phone: (800) 833-2006 • (518) 842-1431

www.mohawklifts.com

SEND US YOUR PHOTOS!

MOHAWK IS ALWAYS INTERESTED IN SEEING HOW YOUR LIFTS ARE USED. WE HAVE CREATED AN ON-LINE PHOTO DATABASE FOR CUSTOMERS TO VIEW OUR LIFTS IN USE.



VISIT WWW.MOHAWKLIFTS.COM/PR/ AND MAYBE WE CAN ADD YOUR PHOTOS TO OUR COLLECTION.
(JPG FORMATS PREFERRED)

E-MAIL YOUR PHOTOS AND COMMENTS TO:
PHOTOS@MOHAWKLIFTS.COM

BEST REGARDS & HAPPY LIFTING!

YOUR FRIENDS AT MOHAWK LIFTS