

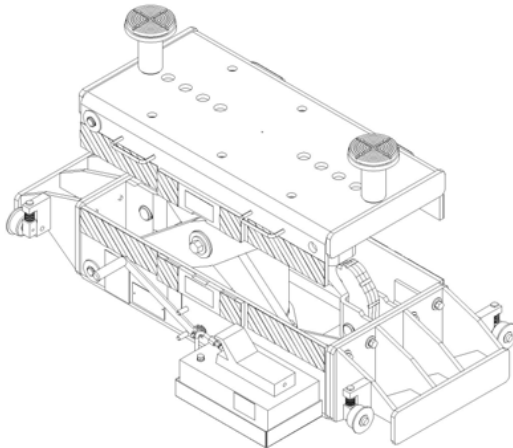
MOHAWK

MADE IN THE USA

Model RJ-50-AH Series

PNEUMATIC/HYDRAULIC JACKING BEAM

- Model RJ-50-AH-50000:** Rated 50,000 Lb on 75k Lb Lifts (4 Post)
Model RJ-50-AH-37500-P: Rated 37,500 Lb on 75-100k Lb Lifts (Parallel)
Model RJ-50-AH-35000: Rated 35,000 Lb on 50k Lb Lifts (4 Post)
Model RJ-50-AH-35000-P: Rated 35,000 Lb on 50k Lb Lifts (Parallel)
Model RJ-50-AH-31500-P: Rated 31,500 Lb on 45k Lb Lifts (Parallel)
Model RJ-50-AH-28000-P: Rated 28,000 Lb on 40k Lb Lifts (Parallel)
Model RJ-50-AH-25000-P: Rated 25,000 Lb on 36-38k Lb Lifts (Parallel)
Model RJ-50-AH-24500: Rated 24,500 Lb on 35k Lb Lifts (4-Post)
Model RJ-50-AH-23000: Rated 23,000 Lb on 33k Lb Lifts (4-Post)
Model RJ-50-AH-20000: Rated 20,000 Lb on 30k Lb Lifts (4-Post)



- ☒ INSTALLATION
- ☒ OPERATION
- ☒ MAINTENANCE
- ☒ PARTS



MOHAWK LIFTS, LLC.

65 VROOMAN AVENUE
P. O. BOX 110
AMSTERDAM, NY 12010
TOLL FREE: 1-800-833-2006
FAX: 1-518-842-1289
LOCAL: 1-518-842-1431

RJ-50-AH-Series 12-1-2015.doc
Rev Date 12/1/2015
Part #601-800-390

**READ MANUAL
THOROUGHLY BEFORE
INSTALLING,
OPERATING OR SERVICING
THIS LIFT !!**

**Deliver these instructions to lift
owner/user/employer along with
other instructional materials
furnished with this lift.**

IMPORTANT SAFETY INSTRUCTIONS

When using your garage equipment, basic safety precautions should always be followed, including the following:

1. Read all instructions. Before assembling unit, become familiar with part names and have a good understanding of how this unit is to be assembled and of how individual parts operate.
2. Care must be taken as burns can occur from touching hot parts.
3. Do not operate equipment if it has been dropped or damaged - until it has been examined by a qualified serviceman.
4. Do not let hoses come in contact with hot manifolds or moving fan blades.
5. Always unplug equipment from air supply when not in use.
6. Keep hair, loose clothing, fingers, and all parts of body away from moving parts.
7. Use only as described in this manual. Use only manufacturer's recommended attachments.
8. **ALWAYS WEAR SAFETY GLASSES.** Everyday eyeglasses only have impact resistant lenses, they are NOT safety glasses.

SAVE THESE INSTRUCTIONS

ALL MOHAWK JACKING BEAMS ARE FOR INDOOR USE UNLESS SPECIFICALLY QUALIFIED AND MODIFIED FOR A CUSTOM ENVIRONMENT.

PROPER FRAME ENGAGEMENT WITH PADS. ALL JACK BEAMS ARE DESIGNED TO LIFT STANDARD VEHICLES WITHIN THEIR RATED CAPACITY BY THE VEHICLE FRAME. IF SUITABLE FRAME CONTACT LIFT POINTS CAN NOT BE REACHED OR ACCOMMODATED BY THE LIFTING PADS, THE VEHICLE MUST NOT BE RAISED WITH THE LIFT. REFER TO VEHICLE MANUFACTURER LIFTING POINT SPECIFICATIONS (AND VEHICLE LIFT POINT LABEL PER SAE J2184, VEHICLE LIFT POINTS FOR SERVICE GARAGE LIFTING).

CARE MUST BE OBSERVED WHEN REMOVING ANY HEAVY COMPONENTS FROM A VEHICLE AND THEREBY DRASTICALLY SHIFTING THE VEHICLE CENTER OF GRAVITY (I.E. ENGINE REMOVAL, TRANSMISSION REMOVAL, ETC.). THE USE OF JACK STANDS AT THE FRONT AND REAR ENDS OF THE VEHICLE IS HIGHLY RECOMMENDED WHEN PERFORMING THIS TYPE OF WORK.

ADAPTER USAGE AND LIMITATIONS:

THE USE OF HEIGHT ADAPTERS IS COMMON FOR MOST LIFTING SITUATIONS TO ACCOMMODATE HIGH FRAMES AND LOW OVERHANGING BODIES OF VEHICLES.

FOR RJ-50-AH:

THESE LIFTS COME STANDARD WITH (2) 5" AND (2) 7 1/2" AND (2) 10" HEIGHT ADAPTERS.

THESE LIFTS ARE ONLY ALLOWED TO USE 2 ADAPTERS WHEN STACKED: ONE (1) 7 1/2" AND ONE (1) 10" ADAPTER, RESULTING IN 17 1/2" MAXIMUM STACKING HEIGHT. LONGER CUSTOM SINGLE PIECE ADAPTERS ARE AVAILABLE UPON REQUEST.

THE USER SHOULD BE WARNED THAT ANY SITUATION PRODUCING AN OFF-VERTICAL SLANTING OF THE HEIGHT ADAPTERS, SUCH AS, ECCENTRIC CORNER LOADING OF THE LIFT PAD, ETC. MUST BE AVOIDED. CUPPED OR YOKE STYLE LIFTING PADS (WHICH DO NOT RELY ON FRICTION) ARE ALSO AVAILABLE FOR SITUATIONS INVOLVING LIFTING NON-FLAT SURFACES. CONSULT MOHAWK SERVICE DEPARTMENT FOR CUSTOM PAD REQUESTS FOR YOUR APPLICATION.

HAVE A QUESTION?

**Call your local
Mohawk distributor
For parts, service and technical support.**

Distributor Place Card Here

Please have this unit's model and serial number when calling for service.

Model Number _____
Serial Number _____

OR CONTACT:

MOHAWK LIFTS, LLC.

65 Vrooman Ave.

P.O. Box 110

Amsterdam, NY 12010

Toll Free: 1-800-833-2006

Local: 1-518-842-1431

Fax: 1-518-842-1289

Internet: www.MOHAWKLIFTS.com

E-Mail: Service@MOHAWKLIFTS.com

MOHAWK WARRANTIES

EFFECTIVE DATE: 12/1/2015*

READ THIS WARRANTY IN ITS ENTIRETY

GENERAL WARRANTY INFORMATION:

MOHAWK'S OBLIGATION UNDER THIS WARRANTY IS LIMITED TO REPAIRING OR REPLACING ANY PART OR PARTS RETURNED TO THIS FACTORY, TRANSPORTATION CHARGES PREPAID BY CUSTOMER WITH AUTHORIZED RETURN (RGA), WHICH PROVE UPON INSPECTION TO BE DEFECTIVE AND WHICH HAVE NOT BEEN MISUSED. DAMAGE OR FAILURE TO ANY PART DUE TO FREIGHT DAMAGE OR LACK OF REQUIRED REGULAR DOCUMENTED MAINTENANCE IS NOT COVERED UNDER THIS WARRANTY. ALL WARRANTY CLAIMS MUST BE PERFORMED IN ACCORDANCE TO MOHAWK'S WARRANTY PARTS RETURN POLICY (CONTACT MOHAWK'S SERVICE DEPARTMENT FOR MORE INFORMATION).

THIS WARRANTY DOES NOT COVER MIS-DIAGNOSING OF UNIT OR PARTS RETURNED THAT ARE NON-DEFECTIVE. THIS WARRANTY DOES NOT COVER ANY CONSEQUENTIAL OR INCIDENTAL DAMAGES INCLUDING, BUT NOT LIMITED TO, LOST REVENUES OR BUSINESS HARM. THIS EQUIPMENT HAS BEEN DESIGNED FOR USE IN NORMAL VEHICLE MAINTENANCE APPLICATIONS. A SPECIFIC INDIVIDUAL WARRANTY MUST BE ISSUED FOR UNITS THAT DEVIATE FROM INTENDED USAGE, SUCH AS HIGH CYCLE USAGE IN INDUSTRIAL APPLICATIONS, OR USAGE IN EXTREMELY ABUSIVE ENVIRONMENTS. MOHAWK RESERVES THE RIGHT TO DECLINE RESPONSIBILITY WHEN REPAIRS OR MODIFICATIONS HAVE BEEN MADE OR ATTEMPTED BY OTHERS WITHOUT WRITTEN AUTHORIZATION FROM MOHAWK LIFTS, LLC.. THIS WARRANTY DOES NOT COVER LABOR OR TRANSPORTATION. THIS WARRANTY DOES NOT COVER DOWNTIME EXPENSES INCURRED WHEN UNIT IS IN REPAIR. **THE LIFT MUST BE REGISTERED WITHIN 30 DAYS OF INSTALLATION BY MAILING SUPPLIED WARRANTY REGISTRATION CARD TO MOHAWK AND MUST BE SIGNED BY A LICENSED ELECTRICIAN.** THE MODEL NUMBER AND SERIAL NUMBER OF THE EQUIPMENT MUST BE FURNISHED WITH ALL WARRANTY CLAIMS. THIS WARRANTY STATEMENT CONTAINS THE ENTIRE AGREEMENT BETWEEN MOHAWK LIFTS, LLC. AND THE PURCHASER UNLESS OTHERWISE SPECIFICALLY EXPRESSED IN WRITING. THIS NON-TRANSFERABLE WARRANTY APPLIES TO THE ORIGINAL PURCHASER ONLY.

THIS WARRANTY DOES NOT COVER NORMAL SURFACE WEAR ITEMS, ITEMS SUBJECT TO ABRASION, OR ITEMS USED IN A CORROSIVE ENVIRONMENT. SOME ITEMS ON LIFT ARE SUBJECT TO NORMAL "WEAR AND TEAR" AND ARE NOT COVERED UNDER THIS WARRANTY.

STRUCTURAL AND MECHANICAL COMPONENTS (ALL LIFTS):

STRUCTURAL AND MECHANICAL COMPONENTS OF THIS UNIT ARE GUARANTEED FOR THE BELOW STATED TIME FRAME, SPECIFIC TO MODEL LISTED, FROM THE DATE OF SHIPMENT FROM FACTORY, AGAINST DEFECTS IN WORKMANSHIP AND/OR MATERIALS WHEN LIFT IS INSTALLED AND USED ACCORDING TO SPECIFICATIONS.

25-YEARS STRUCTURAL / 10 YEARS MECHANICAL: TWO-POST MODELS A-7, SYSTEM IA-10, LC-12, LMF-12, TP-16, TP-18, TP-20, TP-26, TP-30. STRUCTURAL ITEMS COVERED INCLUDE LEG, CARRIAGE, SWING ARM AND SLIDER WELDMENTS (EXCLUDING NORMAL WEAR AREAS AS STATED ABOVE). MECHANICAL ITEMS COVERED INCLUDE ROLLER BEARINGS AND LIFTING CHAIN.

5-YEAR: MODELS TL-7.

3-YEAR: MODELS TR-19, TR-25, FL-25, TR-30, TR-33, TR-35, TR-50, TR-75, TR-110, TR-120, MP-SERIES LIFTS.

2-YEAR: MODELS PARALLELOGRAM SERIES LIFTS.

1-YEAR: MODELS TD-1000, TD-2000, CT-1000, USL-6000.

POWER UNIT (ALL LIFTS):

ALL POWER UNIT COMPONENTS (MOTOR, PUMP AND RESERVOIR) ARE GUARANTEED FOR TWO YEARS FOR PARTS, FROM THE DATE OF SHIPMENT FROM FACTORY, AGAINST DEFECTS IN WORKMANSHIP AND/OR MATERIALS WHEN THE LIFT IS INSTALLED, WIRED BY A LICENSED ELECTRICIAN AND USED ACCORDING TO SPECIFICATIONS.

ELECTRICAL COMPONENTS (ALL LIFTS):

ALL ELECTRICAL COMPONENTS (EXCLUDING MOTOR) ARE GUARANTEED FOR ONE YEAR FOR PARTS, FROM THE DATE OF SHIPMENT FROM FACTORY, AGAINST DEFECTS IN WORKMANSHIP AND/OR MATERIALS WHEN THE LIFT IS INSTALLED AND USED ACCORDING TO SPECIFICATIONS. SEE WARRANTY EXCEPTIONS SECTION FOR BATTERIES.

PNEUMATIC-AIR COMPONENTS (ALL LIFTS):

ALL PNEUMATIC (AIR) COMPONENTS (I.E. AIR CYLINDERS AND POPPET AIR VALVES) ARE GUARANTEED FOR ONE YEAR FOR PARTS, FROM THE DATE OF SHIPMENT FROM FACTORY, AGAINST DEFECTS IN WORKMANSHIP AND/OR MATERIALS WHEN THE LIFT IS INSTALLED AND USED ACCORDING TO SPECIFICATIONS. COMPONENTS IN A PNEUMATIC SYSTEM THAT ARE NOT PROPERLY REGULATED, LUBRICATED AND CONDITIONED WITH AN AIR DRYING SYSTEM ARE NOT COVERED UNDER WARRANTY.

HYDRAULIC COMPONENTS (ALL LIFTS):

EXCLUDING CYLINDERS AND PUMPS (COVERED IN OTHER SECTIONS), ALL HYDRAULIC COMPONENTS (I.E. VALVES AND FITTINGS) ARE GUARANTEED FOR ONE YEAR FOR PARTS, FROM THE DATE OF SHIPMENT FROM FACTORY, AGAINST DEFECTS IN WORKMANSHIP AND/OR MATERIALS WHEN THE LIFT IS INSTALLED AND USED ACCORDING TO SPECIFICATIONS.

HYDRAULIC CYLINDERS (MODEL SPECIFIC LIFTS):

THE FOLLOWING MODELS ARE GUARANTEED FOR 5 YEARS (PARTS ONLY), FROM DATE OF SHIPMENT FROM FACTORY, FOR HYDRAULIC CYLINDERS, AGAINST DEFECTS IN WORKMANSHIP AND/OR MATERIALS WHEN THE LIFT IS INSTALLED AND USED ACCORDING TO SPECIFICATIONS: TWO-POST MODELS A-7, SYSTEM IA-10, LC-12, LMF-12, TP-16, TP-18, TP-20, TP-26, TP-30.

ALL OTHER MODELS ARE GUARANTEED FOR TWO YEARS (PARTS ONLY), FROM THE DATE OF SHIPMENT FROM FACTORY, FOR HYDRAULIC CYLINDERS, AGAINST DEFECTS IN WORKMANSHIP AND/OR MATERIALS WHEN THE LIFT IS INSTALLED AND USED ACCORDING TO SPECIFICATIONS (EXCLUDING USL-6000, WHICH IS ONE YEAR).

THE "EXTENDED LIFETIME CYLINDER SEAL WARRANTY" (BELOW) IS APPLICABLE TO THE FOLLOWING MOHAWK LIFTS ONLY: TWO-POST MODELS A-7, SYSTEM IA-10, LC-12, LMF-12, TP-16, TP-18, TP-20, TP-26, TP-30. SEE MOHAWK'S "EXTENDED LIFETIME CYLINDER SEAL WARRANTY" FOR SPECIFIC WARRANTY PROVISIONS FOR HYDRAULIC CYLINDERS.

THE "EXTENDED LIFETIME CYLINDER SEAL WARRANTY" IS AS FOLLOWS:

AS THE ORIGINAL PURCHASER OF A MOHAWK LIFT MANUFACTURED BY MOHAWK LIFTS, LLC. YOU ARE ENTITLED TO AN EXTENDED CYLINDER SEAL WARRANTY.

MOHAWK'S OBLIGATION UNDER THIS WARRANTY IS LIMITED TO SUPPLYING MODEL SPECIFIC CYLINDER SEALS. THE CUSTOMER IS RESPONSIBLE FOR SHIPPING AND HANDLING OF THE SEALS. MOHAWK IS NOT RESPONSIBLE/LIABLE FOR THE REBUILD OF CYLINDERS BY OTHERS. THIS WARRANTY IS NON-TRANSFERABLE AND RUNS TO THE ORIGINAL PURCHASER ONLY.

STANDARD OPTIONS (ALL LIFTS):

ALL STANDARD OPTIONS OF THIS UNIT ARE GUARANTEED FOR ONE YEAR FOR PARTS, FROM THE DATE OF SHIPMENT FROM FACTORY, AGAINST DEFECTS IN WORKMANSHIP AND/OR MATERIALS WHEN LIFT IS INSTALLED AND USED ACCORDING TO SPECIFICATIONS.

CUSTOM LIFTS AND CUSTOM OPTIONS:

ALL "CUSTOM" LIFTS AND/OR "CUSTOM" OPTIONS ARE GUARANTEED FOR ONE YEAR FOR PARTS, FROM THE DATE OF SHIPMENT FROM FACTORY, AGAINST DEFECTS IN WORKMANSHIP AND/OR MATERIALS WHEN LIFT IS INSTALLED AND USED ACCORDING TO SPECIFICATIONS.

WARRANTY EXCEPTIONS (ALL LIFTS):

ADJUSTMENTS: THIS WARRANTY DOES NOT COVER CASUAL AND ROUTINE ADJUSTMENTS SUCH AS, BUT NOT LIMITED TO: FITTINGS, SENSORS AND SWITCHES, ANCHOR BOLT RE-TIGHTENING, OR ANY SHIMMING OR ADJUSTMENTS REQUIRED DURING A PROPER AND PROFESSIONAL INSTALLATION BY A QUALIFIED INSTALLER.

MAINTENANCE AND INSPECTIONS: IF THIS UNIT IS NOT MAINTAINED AND INSPECTED IN ACCORDANCE TO THE RELEVANT SECTIONS IN THE USERS MANUAL FOR THIS SPECIFIC MODEL, WARRANTY IS VOID. OSHA, ANSI AND MOHAWK REQUIRE THAT RECORDS MUST BE MAINTAINED TO PROVE THAT INSPECTIONS AND MAINTENANCE OF THIS UNIT HAVE BEEN ROUTINELY PERFORMED BY QUALIFIED INDIVIDUALS.

ABUSE: IF THIS UNIT IS FOUND TO BE OVERLOADED (PURPOSELY OR UNKNOWINGLY), USED IN A SITUATION BEYOND ITS INTENDED FUNCTION, NOT MAINTAINED & INSPECTED REGULARLY, USED IN AN ABUSIVE ENVIRONMENT OR BEYOND NORMAL SHOP USAGE, THIS WARRANTY IS VOID IN ITS ENTIRETY.

NON-EXISTENT PROBLEMS: FOR SERVICE VISITS, PART REPLACEMENTS, LABOR, ETC. FOR PARTS FOUND TO BE NON-DEFECTIVE, OR FOR A UNIT DIS-FUNCTION THAT DOES NOT EXIST, IT IS THE LIFT OWNER THAT REQUESTED THE SERVICE VISIT WHO BEARS THE RESPONSIBILITY OF ALL RELATED EXPENSES.

BATTERIES: ALL BATTERIES CARRY THE BATTERY MANUFACTURER'S WARRANTY. MAINTENANCE REQUIREMENTS AND ABUSE PROVISIONS ARE AS STATED BY THE BATTERY MANUFACTURER. REFER TO BATTERY MANUFACTURER'S WARRANTY.

SPECIAL/MODIFIED INSTALLATIONS: THIS WARRANTY DOES NOT COVER "NON-TRADITIONAL" INSTALLATIONS. INSTALLATIONS ARE TO BE DONE ACCORDING TO SPECIFICATIONS, OR THE WARRANTY IS VOID.

WEARABLE COMPONENTS: SOME ITEMS ON LIFTS ARE SUBJECT TO NORMAL "WEAR AND TEAR" AND ARE NOT COVERED UNDER THIS WARRANTY.

NON-VEHICLE / RE-PURPOSED LIFTS: THIS WARRANTY DOES NOT COVER LIFTS THAT ARE "RE-PURPOSED" TO RAISE AND LOWER EQUIPMENT THAT ARE NOT CONSIDERED VEHICLES.

* THIS WARRANTY SUPERSEDES ALL OTHER WARRANTY POLICIES PREVIOUSLY STATED AND IN ALL OTHER MOHAWK PRODUCT SPECIFIC LITERATURE (MANUALS, BROCHURES, ETC.).

CONTENTS

TEXT

	PAGE
IMPORTANT NOTES	2
SPECIFICATIONS	3
PACKING LIST	4
INSTALLATION INSTRUCTIONS	5
SAFETY TIPS	6
PRE - OPERATION CHECK LIST / LIFTING PROCEDURES	7
MAINTENANCE PROCEDURES	8
TROUBLE SHOOTING	9
SERVICE CHART	10
MAINTENANCE CHART	10

PARTS & DIAGRAMS

	FIGURE	PAGE
RJ-50-AH-SERIES SPECIFICATION DRAWING FOR TR-30	025-050-046	12
RJ-50-AH-SERIES SPECIFICATION DRAWING FOR PARALLELOGRAM	025-050-047	13
RJ-50-AH-SERIES SPECIFICATION DRAWING FOR TR-33 THRU TR-75	025-050-048	14
RJ-50-AH ASSEMBLY FOR TR-33 THRU TR-75	050-050-090	15
RJ-50-AH ASSEMBLY FOR PARALLELOGRAM	050-050-094	16
RJ-50-AH DECALS	050-050-088	17
RJ-50-AH CENTER ASSEMBLY	050-050-091	18-22
CYLINDER ASSEMBLY	025-050-071	23
SCISSOR ARM ASSEMBLY	025-050-072	24
SLIDER ARM ASSEMBLY	025-050-043	25
HYDRAULIC SCHEMATIC	050-050-069	26
ALI WARNING, CAUTION AND SAFETY MESSAGES		27

ALL INFORMATION, ILLUSTRATIONS, AND SPECIFICATIONS IN THIS MANUAL ARE BASED ON THE LATEST PRODUCT INFORMATION AVAILABLE AT THE TIME OF PRINTING. WE RESERVE THE RIGHT TO MAKE CHANGES AT ANY TIME WITHOUT NOTICE.

IMPORTANT NOTES FOR MOHAWK LIFT DEVICES

RECOMMENDATIONS BY THE INDIVIDUAL USER OR USING ORGANIZATION FOR IMPROVING THIS PUBLICATION OR ANY ASPECT OF THE PRODUCT ARE ENCOURAGED AND SHOULD BE FORWARDED IN WRITING TO:

**MOHAWK LIFTS, LLC.
PRODUCT IMPROVEMENTS
65 VROOMAN AVE.
AMSTERDAM, NY, 12010**

THIS IS NOT A VEHICLE LIFTING PROCEDURE MANUAL AND NO ATTEMPT IS MADE OR IMPLIED HEREIN TO INSTRUCT THE USER IN LIFTING METHODS PARTICULARLY TO THE INDIVIDUAL APPLICATION OF THE EQUIPMENT DESCRIBED IN THIS MANUAL. RATHER, THE CONTENTS OF THIS MANUAL ARE INTENDED AS A BASE LINE FOR OPERATION, MAINTENANCE, TROUBLE SHOOTING, AND PARTS LISTING OF THE UNIT AS IT STANDS ALONE AND AS IT IS INTENDED AND ANTICIPATED TO BE USED IN CONJUNCTION WITH OTHER EQUIPMENT.

PROPER APPLICATION OF THE EQUIPMENT DESCRIBED HEREIN IS LIMITED TO THE PARAMETERS DETAILED IN THE SPECIFICATIONS AND THE USES SET FORTH IN THE DESCRIPTIVE PASSAGES. ANY OTHER PROPOSED APPLICATION OF THIS EQUIPMENT SHOULD BE DOCUMENTED AND SUBMITTED IN WRITING TO MOHAWK LIFTS, LLC. FOR EXAMINATION. THE USER ASSUMES FULL RESPONSIBILITY FOR ANY EQUIPMENT DAMAGE, PERSONAL INJURY, OR ALTERATION OF THE EQUIPMENT DESCRIBED IN THIS MANUAL OR ANY SUBSEQUENT DAMAGES.

DO NOT WELD, APPLY HEAT, OR MODIFY THIS EQUIPMENT IN ANY MANNER WITHOUT WRITTEN AUTHORIZATION FROM MOHAWK LIFTS, LLC. CERTAIN ALLOY OR HEAT-TREATED COMPONENTS MAY BE DISTORTED OR WEAKENED, RESULTING IN AN UNSAFE CONDITION.

MOHAWK LIFTS, LLC. IS NOT RESPONSIBLE FOR DISTORTIONS, WHICH RESULT FROM WELDING ON THIS EQUIPMENT AFTER MANUFACTURING IS COMPLETED. UNAUTHORIZED WELDING, APPLICATION OF HEAT, OR

MODIFICATION OF THIS EQUIPMENT VOIDS ANY AND / OR ALL APPLICABLE WARRANTIES COVERING THIS EQUIPMENT.

ALL WARRANTIES APPLICABLE TO THIS EQUIPMENT ARE CONTINGENT ON STRICT ADHERENCE TO THE MAINTENANCE SCHEDULES AND PROCEDURES IN THIS MANUAL.

KEEP ALL SHIELDS AND GUARDS IN PLACE. INSURE ALL SAFETY MECHANISMS ARE OPERABLE. KEEP HANDS, FEET, AND CLOTHING AWAY FROM POWER-DRIVEN AND MOVING PARTS.

CAUTION

THE EQUIPMENT DESCRIBED IN THIS MANUAL COULD BE POTENTIALLY DANGEROUS IF IMPROPERLY OR CARELESSLY OPERATED. FOR THE PROTECTION OF ALL PERSONS AND EQUIPMENT, ONLY COMPETENTLY TRAINED OPERATORS WHO ARE CRITICALLY AWARE OF THE PROPER OPERATING PROCEDURES, POTENTIAL DANGERS, AND SPECIFIC APPLICATION OF THIS EQUIPMENT SHOULD BE ALLOWED TO TOUCH THE CONTROLS AT ANY TIME.

SAFE OPERATION OF THIS EQUIPMENT IS DEPENDENT ON USE, IN COMPLIANCE WITH THE OPERATION PROCEDURES OUTLINED IN THIS MANUAL ALONG WITH THE MAINTENANCE AND INSPECTION PROCEDURES WITH CONSIDERATION OF PREVAILING CONDITIONS.

THE EQUIPMENT DESCRIBED IN THIS MANUAL IS NEITHER DESIGNED NOR INTENDED FOR ANY APPLICATION ALONE OR IN CONJUNCTION WITH ANY OTHER EQUIPMENT THAT INVOLVES THE LIFTING OR MOVING OF **PERSONS**.

ALWAYS CONSULT THE VEHICLE LIFTING GUIDE FOR THE PROPER LIFTING POINTS ON ANY VEHICLE. THESE GUIDES ARE AVAILABLE FROM THE VEHICLE MANUFACTURERS. AFTER LIFTING THE VEHICLE TO THE DESIRED HEIGHT, ALWAYS LOWER THE UNIT ONTO THE MECHANICAL SAFETIES. THE FORMING OF GOOD OPERATIONAL WORK HABITS WILL ELIMINATE OVERSIGHTS IN THE USE OF PROVIDED SAFETY DEVICES.

RJ-50-AH-SERIES JACKING BEAMS:

Only certified RJ-50-AH-Series Jacking Beams are intended for use on certified versions of the Mohawk Parallelogram Lifts (see list below). Follow load rating of beam dependant on what lift it is on. Use of non-certified jacking beams on certified lifts will void the certification of the lift.

RJ-50P-Series Jacking Beams for use on the following certified lifts:

Model RJ-50-AH-50000: Rated 50,000 Lb on 75k Lb Lifts (4 Post)

Model RJ-50-AH-37500-P: Rated 37,500 Lb on 75-100k Lb Lifts (Parallel)

Model RJ-50-AH-35000: Rated 35,000 Lb on 50k Lb Lifts (4 Post)

Model RJ-50-AH-35000-P: Rated 35,000 Lb on 50k Lb Lifts (Parallel)

Model RJ-50-AH-31500-P: Rated 31,500 Lb on 45k Lb Lifts (Parallel)

Model RJ-50-AH-28000-P: Rated 28,000 Lb on 40k Lb Lifts (Parallel)

Model RJ-50-AH-25000-P: Rated 25,000 Lb on 36-38k Lb Lifts (Parallel)

Model RJ-50-AH-24500: Rated 24,500 Lb on 35k Lb Lifts (4-Post)

Model RJ-50-AH-23000: Rated 23,000 Lb on 33k Lb Lifts (4-Post)

Model RJ-50-AH-20000: Rated 20,000 Lb on 30k Lb Lifts (4-Post)

Use of a pair of Jacking Beams is allowable, but the minimum distance between centerline of the beams (cylinders) is **14 ft min.** Loading of the jacking beams or combinations of jacking beams above the rated capacity of the lift itself could result in personal injury to the operator and/or damage to the lift and/or vehicle. The load rating of any jacking beam or combination of jacking beams on this unit must not exceed the rated capacity of the lift.

RJ-50-AH-SERIES SPECIFICATIONS**PERFORMANCE SPECIFICATIONS**

LIFTING TYPE	AIR / HYDRAULIC
LIFTING CAPACITY (USING BOTH CYLINDERS) NOTE: CAPACITY IS DEPENDANT ON WHAT MODEL LIFT THE JACK IS ON.	Model RJ-50-AH-50000: Rated 50,000 Lb on 75k Lb Lift Models (4-Post) Model RJ-50-AH-37500-P: Rated 37,500 Lb on 75k-100k Lb Lift Models (Parallelogram) Model RJ-50-AH-35000: Rated 35,000 Lb on 50k Lb Lift Models (4-Post) Model RJ-50-AH-35000-P: Rated 35,000 Lb on 50k Lb Lift Models (Parallelogram) Model RJ-50-AH-31500-P: Rated 31,500 Lb on 45k Lb Lift Models (Parallelogram) Model RJ-50-AH-28000-P: Rated 28,000 Lb on 40k Lb Lift Models (Parallelogram) Model RJ-50-AH-25000-P: Rated 25,000 Lb on 36-38k Lb Lift Models (Parallelogram) Model RJ-50-AH-24500: Rated 24,500 Lb on 35k Lb Lifts Models (4-Post) Model RJ-50-AH-23000: Rated 23,000 Lb on 33k Lb Lifts Models (4-Post) Model RJ-50-AH-20000: Rated 20,000 Lb on 30k Lb Lifts Models (4-Post)
LIFTING SPEED (NO LOAD) (DEPENDANT ON AIR SUPPLY PSI & CFM)	120 SECONDS
LOWERING SPEED (NO LOAD) (DEPENDANT ON AIR SUPPLY PSI & CFM)	60 SECONDS
LIFTING HEIGHT (STROKE)	8 INCHES
MINIMUM HEIGHT OF PAD FROM TOP OF TRACKS (FULLY LOWERED)	5 1/4 INCHES
MAXIMUM HEIGHT OF PAD FROM TOP OF TRACKS (FULLY RAISED)	23 1/4 INCHES WITH (1) 3" AND (1) 6" ADAPTER
WIDTH BETWEEN CYLINDERS	12 INCHES MIN 36 3/4 INCHES MAX
OVERALL DEPTH	26 INCHES
OVERALL LENGTH	52 INCHES
OVERALL HEIGHT	18 INCHES

SHIPPING WEIGHT

900 LBS

POWER UNIT SPECIFICATIONS

BRAND NAME	SPX
MOHAWK PART NUMBER	601-200-108
POWER UNIT TYPE	AIR/HYDRAULIC
INPUT PRESSURE AND FLOW RECOMMENDED:	100 TO 120 PSI 25 CFM MIN
PUMP OUTPUT FLOW:	VARIABLE (based on load)
RELIEF VALVE SETTING	VARIABLE (see capacities) Max PU Output 3200 psi
RESERVOIR CAPACITY	2 GALLON
HYDRAULIC FLUID MEDIUM	DEXRON III ATF

SEE DIMENSIONAL SPEC DRAWING
IN DRAWINGS SECTION
FOR MORE INFORMATION.

RJ-50-AH-SERIES PACKING LIST

PART NUMBER	PART DESCRIPTION	QTY.
050-050-090 Or 025-050-045 Or 050-050-094	Jack Beam Assy, RJ-50-AH-Series for TR-75 Or Jack Beam Assy, RJ-50-AH-Series for TR-30 Or Jack Beam Assy, RJ-50-AH-Series for Parallelogram	1
050-050-067	MANUAL, RJ-50-AH-SERIES	1
050-050-084	LIFTING PAD, Cast	2
050-050-085	LIFTING PAD, AXLE/YOKE TYPE	2
050-050-168	HEIGHT ADAPTER, 5 INCH	2
050-050-169	HEIGHT ADAPTER, 7 1/2 INCH	2
050-050-170	HEIGHT ADAPTER, 10 INCH	2
	INSPECTED BY:	

INSTALLATION INSTRUCTIONS

IMPORTANT

READ THIS MANUAL IN ITS ENTIRETY. BE FAMILIAR WITH PART NAMES AND HAVE A GOOD UNDERSTANDING OF HOW THIS UNIT IS TO BE ASSEMBLED AND OF HOW INDIVIDUAL PARTS OPERATE, BEFORE ASSEMBLING THE UNIT.
REFER TO ANSI/ALI ALIS, SAFETY REQUIREMENTS FOR INSTALLATION AND SERVICE OF AUTOMOTIVE LIFTS.

INSTALLATION OF BEAM

THIS JACKING BEAM IS FOR USE ONLY ON MOHAWK PARALLELOGRAM or TR-SERIES LIFTS.

MOVE JACKING BEAM TO END OF TRACKS. INSERT THE JACKING BEAM BETWEEN THE TRACKS WITH ROLLERS ON TRACK RAILS.

NOTE

FOR PARALLELOGRAM LIFTS: THE MEASUREMENT BETWEEN THE TRACKS AT THE FORE AND AFT END OF THE UNIT MUST BE THE SAME (45" +1/4 / -0) IN ORDER FOR THE JACK TO ROLL SMOOTHLY ALONG THE ENTIRE LENGTH OF THE TRACKS.

FOR TR-SERIES (4-POST) LIFTS: THE MEASUREMENT BETWEEN THE TRACKS AT THE FORE AND AFT END OF THE UNIT MUST BE THE SAME (48" +1/4 / -0) IN ORDER FOR THE JACK TO ROLL SMOOTHLY ALONG THE ENTIRE LENGTH OF THE TRACKS.

RAISE THE LIFT UNIT INSURING THAT THE WHEELS ON THE JACKING BEAM ARE MAKING PROPER CONTACT WITH TRACK RAILS

FINE ADJUSTMENTS TO THE WHEELS CAN BE MADE BY ADJUSTING THE SCREWS AT THE UNDERSIDE OF EACH WHEEL POSITION.

LASTLY, CONNECT AIR SUPPLY TO FITTING ON JACKING BEAM. SUPPLY SHOULD BE 100-120 PSI, A MINIMUM OF 25 CFM, AND BE DRY (USE OF A PNEUMATIC DRYER RECOMMENDED).

<p>NOTE: AIR MUST BE CLEAN AND DRY, OR WILL VOID THE WARRANTY.</p>

SAFETY TIPS

PLEASE POST THE **AUTOMOTIVE LIFT SAFETY TIPS CARD**, (A COPY IS INCLUDED IN THE PARTS BOX) WHERE THEY WILL BE CONSTANTLY REMINDED TO YOUR LIFT OPERATOR. FOR INFORMATION SPECIFIC TO THE LIFT, ALWAYS REFER TO THE MOHAWK MANUAL.

- | | |
|---|---|
| <ul style="list-style-type: none"> • INSPECT YOUR LIFT DAILY. NEVER OPERATE IT IF IT MALFUNCTIONS OR IF IT HAS BROKEN OR DAMAGED PARTS. REPAIRS SHOULD BE MADE WITH ORIGINAL MOHAWK PARTS. • OPERATING CONTROLS ARE DESIGNED TO CLOSE WHEN RELEASED. DO NOT BLOCK OPEN OR OVERRIDE THEM. • NEVER OVERLOAD YOUR LIFT BEYOND STATED LIFTING CAPACITY. RATED CAPACITY IS SHOWN ON NAMEPLATE AFFIXED TO THE LIFT. • ONLY TRAINED AND AUTHORIZED PERSONNEL SHOULD DO POSITIONING OF VEHICLE AND OPERATION OF THE LIFT. • DO NOT ALLOW CUSTOMERS OR BY- STANDERS TO OPERATE THE LIFT OR TO BE IN A LIFTING AREA DURING ITS OPERATION. ONLY PROPERLY TRAINED PERSONNEL SHOULD BE ALLOWED TO OPERATE LIFT. • NEVER RAISE A VEHICLE WITH PERSONS INSIDE. • ALWAYS KEEP LIFT AREA FREE OF OBSTRUCTIONS, DEBRIS, GREASE, AND OIL. • PERFORM THE PRE-OPERATION CHECK LIST, PER INSTRUCTIONS, BEFORE RAISING VEHICLE TO DESIRED HEIGHT. • BEFORE DRIVING VEHICLE INTO THE BAY, POSITION RJ CYLINDERS, PADS AND WHEEL CHOCKS OUT OF THE WAY TO PROVIDE | <p>UNOBSTRUCTED CLEARANCE. DO NOT HIT OR RUN OVER CYLINDERS, ADAPTERS, OR WHEEL STOPS. THIS COULD DAMAGE LIFT OR VEHICLE.</p> <ul style="list-style-type: none"> • LOAD VEHICLE ON JACK PADS TO CONTACT AT THE VEHICLE MANUFACTURER'S RECOMMENDED LIFTING POINTS. RAISE JACK CYLINDERS UNTIL SUPPORTS CONTACT VEHICLE. CHECK SUPPORTS FOR SECURE CONTACT WITH VEHICLE. RAISE JACK CYLINDERS TO DESIRED WORKING HEIGHT. • NOTE THAT WITH SOME VEHICLES, THE REMOVAL OR INSTALLATION OF COMPONENTS MAY CAUSE A CRITICAL SHIFT IN THE CENTER OF GRAVITY, AND RESULT IN RAISED VEHICLE INSTABILITY. REFER TO THE VEHICLE MANUFACTURER'S SERVICE MANUAL FOR RECOMMENDED PROCEDURES WHEN VEHICLE COMPONENTS ARE REMOVED. • BEFORE LOWERING LIFT, BE SURE TOOL TRAY'S, STANDS, ETC. ARE REMOVED FROM UNDER VEHICLE. RELEASE LOCKING DEVICES BEFORE ATTEMPTING TO LOWER LIFT. • BEFORE REMOVING VEHICLE FROM THE LIFT AREA, ENSURE THAT THE HYDRAULIC CYLINDER HAS BEEN COMPLETELY RETRACTED, AND THAT THE LIFTING PADS AND HEIGHT ADAPTERS HAVE BEEN PLACED IN THEIR PROPER PLACE. • BEFORE LOWERING LIFT, BE SURE JACKING BEAM IS LOCATED AT END OF LIFT WHERE FLOOR POCKET IS LOCATED (FOR FLUSH MOUNT LIFTS ONLY). |
|---|---|

PRE - OPERATION CHECK LIST

TRAINED OPERATOR

- THE OPERATOR MUST BE FULLY TRAINED AND QUALIFIED TO SAFELY AND EFFECTIVELY OPERATE THIS EQUIPMENT OF THIS SPECIFIC MAKE AND MODEL.

ABSENCE OF OBSTRUCTIONS

- THE TOTAL WORK AREA MUST BE FREE OF ANY AND ALL OBSTRUCTIONS AND BE GENERALLY CLEAN. (FREE OF OIL AND DEBRIS)

VISUAL INSPECTION

- THOROUGHLY INSPECT THE UNIT WITH A TRAINED EYE, NOTING ANY PROBLEM AREAS. INSPECT THE FLOOR AND THE ANCHORING FASTENERS AS WELL. REPORT ANY QUESTIONABLE ITEMS.

NO LOAD PERFORMANCE CHECK

- NO EXTERNAL FLUID LEAKS.
- NO BLEED DOWN.
- EFFORTLESS AND SIMULTANEOUS MOVEMENT.
- LEVEL LIFTING
- CONTROLS FUNCTION PROPERLY.

PREVIOUS DAY' S OPERATION REPORT

- VERIFY WITH SUPERVISOR THAT THERE WAS NO PROBLEMS EXPERIENCED THE PREVIOUS DAY. IF THERE WERE ANY PROBLEMS, VERIFY THAT ALL NECESSARY REPAIRS HAVE BEEN COMPLETED.

LIFTING PROCEDURES

LIFT PREPARATION AND VEHICLE POSITIONING

- PERFORM PRE-OPERATION CHECK LIST ITEM BY ITEM.
- POSITION THE VEHICLE ONTO THE LIFT SO THAT ALL TIRES ARE SECURELY ON THE TRACKS.
- POSITION THE VEHICLE CENTERED ON THE TRACKS, SO THAT THE WEIGHT IS DISTRIBUTED EVENLY, FORE AND AFT.

NOTE:

ALIGN THE VEHICLE'S CENTER OF GRAVITY WITH THE CENTERLINE OF THE TRACKS.

- PLACE THE WHEEL CHOCKS IN A POSITION SO THAT THE VEHICLE WILL BE SECURE ON THE LIFT. PLACE CHOCKS OPPOSING EACH OTHER, PREFERABLY ON THE END OF THE VEHICLE THAT IS NOT GOING TO BE RAISED BY THE JACKING BEAM.
- PLACE THE JACKING BEAM INTO POSITION, ENABLING LIFTING FROM EITHER FRONT OR REAR AXLE.

TO RAISE

- DEPRESS THE RIGHT SIDE LEVER OF THE POWER UNIT TO RAISE.
- ENSURE PROPER PAD ENGAGEMENT WITH FRAME OR AXLE.
- PLACE THE LIFTING PADS PER MFG'S RECOMMENDED LIFT POINTS FOR THE VEHICLE. REFER TO ALI/LP-GUIDE, ALI/SM01-2 "LIFTING IT RIGHT" GUIDE, AND REFER TO THE RECOMMENDED LOCATION AND FORMAT OF THE VEHICLE LIFT POINT LABEL PER ANSI/SAE J2184-OCT92.

CAUTION:

IF PROPER AND SAFE LIFTING POINTS ON THE FRAME OF THE VEHICLE CAN NOT BE REACHED BY THE LIFTING PADS, DO NOT RAISE THIS VEHICLE!

ADAPTER USAGE AND LIMITATIONS:

THE USE OF HEIGHT ADAPTERS IS COMMON FOR MOST LIFTING SITUATIONS TO ACCOMMODATE HIGH FRAMES AND LOW OVERHANGING BODIES OF VEHICLES.

THESE JACKS ARE ONLY ALLOWED TO USE 2 ADAPTERS WHEN STACKED: ONE (1) 7 1/2" AND ONE (1) 10" ADAPTER, RESULTING IN 17 1/2" MAXIMUM STACKING HEIGHT. LONGER CUSTOM SINGLE PIECE ADAPTERS ARE AVAILABLE UPON REQUEST.

- RAISE VEHICLE AXLE TO DESIRED HEIGHT.
- LOWER ONTO MECHANICAL LOCK.

TO LOWER

- INSPECT THE LIFTING AREA TO INSURE THAT ALL PERSONNEL AND DEBRIS HAVE BEEN CLEARED FROM THE LIFTING AREA.
- RAISE BEAM ABOUT ½ INCH UNTIL LOCK RELEASE LEVER RELEASES LOCKS.
- WHILE HOLDING LOCK RELEASE LEVER DOWN, DEPRESS THE LEFT SIDE LEVER OF THE POWER UNIT TO LOWER.
- BEFORE REMOVING VEHICLE FROM THE LIFT AREA, ENSURE THAT BOTH RJ HYDRAULIC CYLINDERS HAVE BEEN COMPLETELY RETRACTED, AND THAT THE LIFTING PADS AND HEIGHT ADAPTERS HAVE BEEN PLACED IN THEIR PROPER PLACE. PRIOR TO LOWERING LIFT, LOCATE BEAM TO PIT END OF TRACK IF NECESSARY (FOR FLUSH MOUNTED LIFTS)
- REMOVE WHEEL CHOCKS BEFORE REMOVING VEHICLE FROM LIFT.

MAINTENANCE PROCEDURES

-- TRAINED LIFT SERVICE PERSONNEL ONLY --

REFER TO ANSI/ALI ALIS, SAFETY REQUIREMENTS FOR INSTALLATION AND SERVICE OF AUTOMOTIVE LIFTS.

DAILY

- PERFORM THE PRE-OPERATION CHECK LIST.
- REPORT ANY AND ALL EQUIPMENT MALFUNCTIONS IMMEDIATELY.
- CLEAN ALL MOVING PARTS. IF OXIDIZATION IS OCCURRING USE A LIGHT LUBRICANT. (WD - 40 OR EQUIVALENT)
- KEEP AREA AROUND THIS EQUIPMENT FREE OF DIRT, SALT, SAND, WATER, ETC.

WEEKLY

- PERFORM THE DAILY OPERATION CHECK LIST.
- WIPE CLEAN, THE CYLINDER'S WIPER SEALS AND THE INSIDE OF EACH CYLINDER COMPARTMENT TO REMOVE ACCUMULATED DEBRIS.
- VERIFY FLUID LEVEL. WITH THE UNIT FULLY LOWERED, THE FLUID LEVEL WILL BE 1/2 INCH BELOW THE BREATHER CAP PORT. USE DEXRON III AS REPLACEMENT FLUID.

MONTHLY

- INSPECT LIFTING COMPONENTS FOR DEFORMATION, WEAR OR CORROSION.
- INSPECT ALL HYDRAULIC COMPONENTS FOR LEAKS, DEFORMATION, WEAR OR CORROSION.
- TIGHTEN ALL FASTENERS, PNEUMATIC FITTINGS AND HYDRAULIC FITTINGS AS REQUIRED.

1. ALL O - RING BOSS FITTINGS JAM NUTS ARE TO BE TIGHTENED TO 15-FOOT POUNDS TORQUE.
2. ALL PIPE FITTINGS, IF LEAKING IS TO BE REMOVED, RE-SEALED, AND RE - INSTALLED. (SELECT - UNITE THREAD SEALANT OR EQUIVALENT ON FITTING THREADS)

SEMI- ANNUAL

- QUALIFY / RE-QUALIFY ALL PERSONNEL IN THE SAFE OPERATION OF THIS UNIT.

ANNUALLY

- REPLACE AND RE-BLEED THE HYDRAULIC FLUID. ALWAYS USE A CLEAN FUNNEL AND FILTER. USE DEXRON III HYDRAULIC FLUID.
- INSPECT ALL BEARINGS FOR UNUSUAL OR EXCESSIVE WEAR. (REPLACE IF NEEDED)
- PERFORM THE DAILY, WEEKLY, AND MONTHLY MAINTENANCE PROCEDURES.

PART REPLACEMENT NOTES

- REPLACE ALL WORN OR BROKEN PARTS WITH GENUINE LIFT MANUFACTURER SUPPLIED PARTS (FROM MOHAWK RESOURCES LTD. ONLY)
- ALL REPLACEMENTS OF PARTS ARE TO BE PERFORMED BY TRAINED LIFT SERVICE PERSONNEL ONLY.
- UPON PART REPLACEMENT, JACK MUST PASS A FULL INSPECTION AS DEEMED SUITABLE BY TRAINED LIFT SERVICE PERSONNEL.

TROUBLE SHOOTING

WARNING: NEVER ATTEMPT TO LOOSEN HYDRAULIC FITTINGS, OR OVERRIDE SAFETY DEVICES IN AN ATTEMPT TO CORRECT A PROBLEM. ALL TESTS ARE TO BE PERFORMED WITH **NO** VEHICLE.

POSSIBLE CAUSE	SOLUTION
NOT PUMPING	
NO AIR / LOW AIR SUPPLY	JACK REQUIRES 100-120 PSI, 25 CFM MINIMUM.
DEFECTIVE / DAMAGED PUMP	CONTACT MOHAWK SERVICE DEPARTMENT.
DEFECTIVE PU VALVE	CONTACT MOHAWK SERVICE DEPARTMENT.
NOT PUSHING VALVE LEVER / CORRECT LEVER	REFER TO JACK OPERATION INSTRUCTIONS.
NOT LIFTING LOAD (OR RAISING SLOWLY)	
UNIT OVERLOADED	VEHICLE IS TOO HEAVY TO BE RAISED. COMPARE VEHICLE WEIGHT WITH JACK LIFTING CAPACITY.
PRESSURE RELIEF SETTING NEEDS ADJUSTMENT (SET TOO LOW)	REFER TO POWER UNIT SPECIFICATIONS. CONTACT MOHAWK SERVICE DEPARTMENT.
PRESSURE RELIEF CONTAMINATION	REFER TO POWER UNIT SPECIFICATIONS. REMOVE AND CLEAN DEBRIS FROM VALVE ASSEMBLY. CONTACT MOHAWK SERVICE DEPARTMENT.
INSUFFICIENT AIR SUPPLY / FLOW	JACK REQUIRES 100-120 PSI, 25 CFM MINIMUM.
HYDRAULIC SYSTEM CONTAMINATION	CYCLE UNIT EMPTY SEVERAL TIMES. IF NEGATIVE RESULT, FLUSH OUT SYSTEM AND REPLACE WITH DEXRON III ATF.
NOT LOWERING LOAD	
INSUFFICIENT AIR SUPPLY	JACK REQUIRES 100-120 PSI, 25 CFM MINIMUM.
NOT PUSHING VALVE LEVER / CORRECT LEVER	REFER TO JACK OPERATION INSTRUCTIONS.
UNIT STILL ON LOCKS	RAISE UNIT ~1/2", PUSH LOCK RELEASE LEVER DOWN AND HOLD DOWN, WHILE PRESSING LOWER LEVER ON POWER UNIT.

SERVICE CHART

MODEL: _____
 SERIAL NUMBER: _____
 DATE OF INSTALLATION: _____

DATE	PART REPLACED / SERVICED	SERVICE COMPANY	SERVICED BY

MAINTENANCE CHART

DATE	MAINTENANCE PERFORMED	SERVICE COMPANY	SERVICED BY

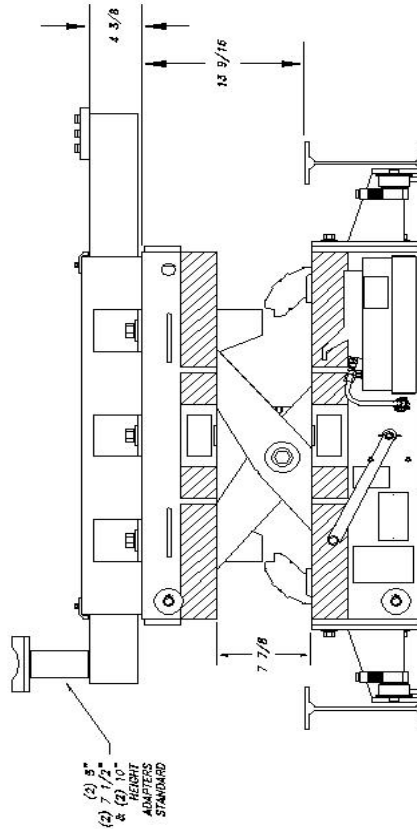
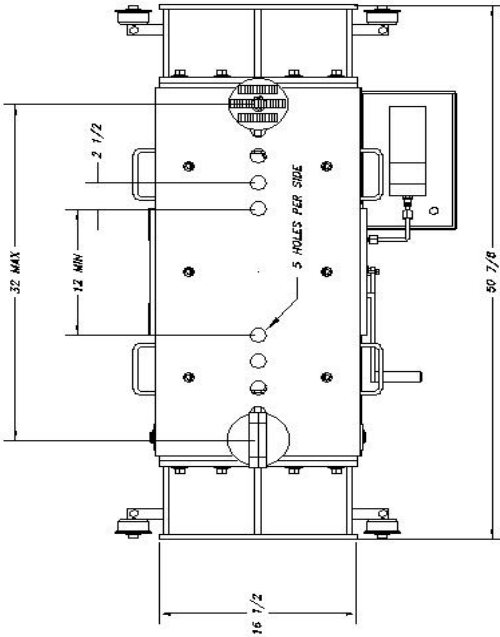
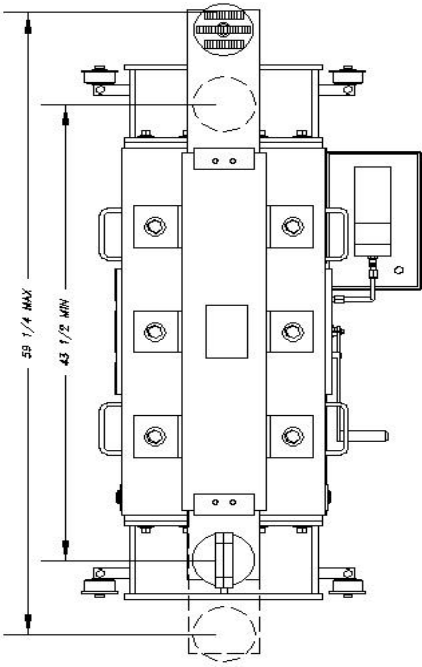
MOHAWK

MODEL RJ-50-AH-SERIES

PARTS & DIAGRAMS

MOHAWK LIFTS, LLC.

65 VROOMAN AVE.
AMSTERDAM, NY 12010
TOLL FREE: 1-800-833-2006
LOCAL: 1-518-842-1431
FAX: 1-518-842-1289
INTERNET: WWW.MOHAWKLIFTS.COM
E-MAIN: SERVICE@MOHAWKLIFTS.



RJ-50-AH-20000 SERIES JACKING BEAM SHOWN ABOVE
WITH OPTIONAL SLIDER ARM ATTACHMENT:
RE-RATED TO 15,000 LB CAPACITY

RJ-50-AH-20000 SERIES AIR/HYD JACKING BEAM:
(TR-30 VERSION, RATED 20,000 LBS.)

NOTICE OF CONFIDENTIAL INFORMATION
THIS DOCUMENT CONTAINS INFORMATION OF A CONFIDENTIAL NATURE AND IS NOT TO BE RELEASED OR DISCLOSED TO THE PUBLIC OR ANY OTHER PERSONS WITHOUT THE WRITTEN PERMISSION OF MOHAWK RESOURCES LTD.

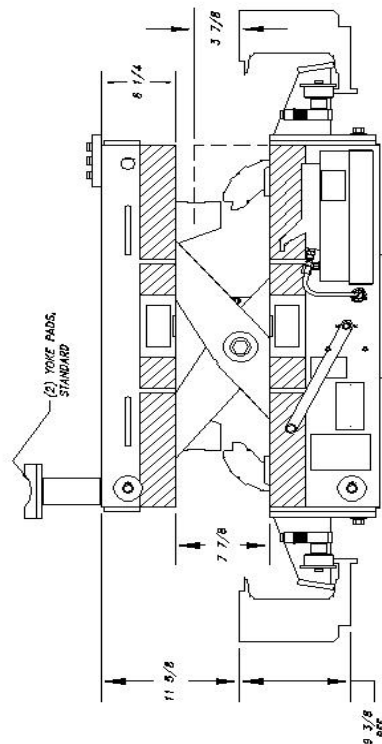
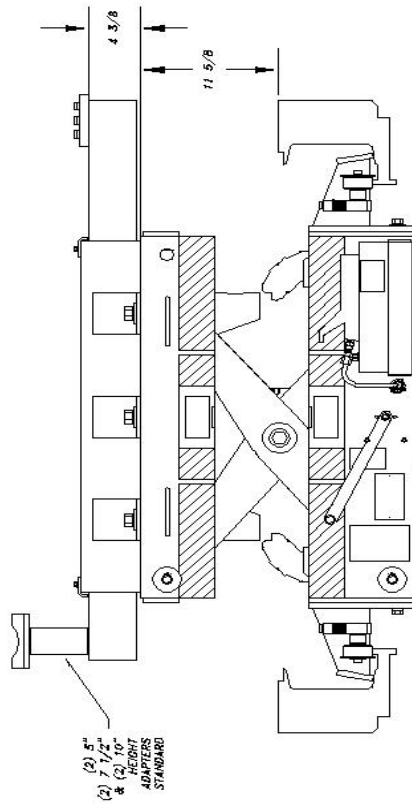
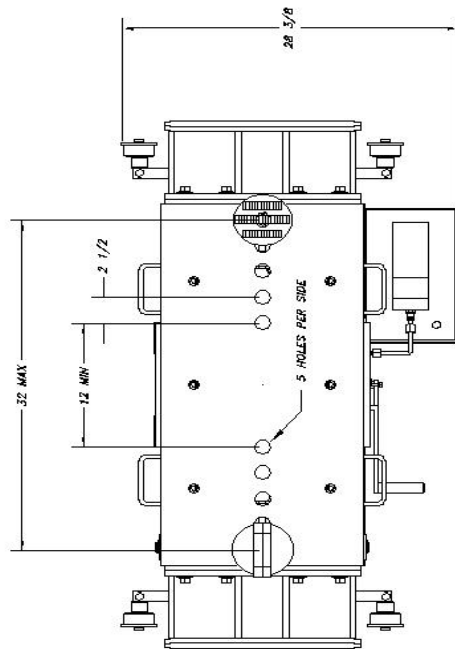
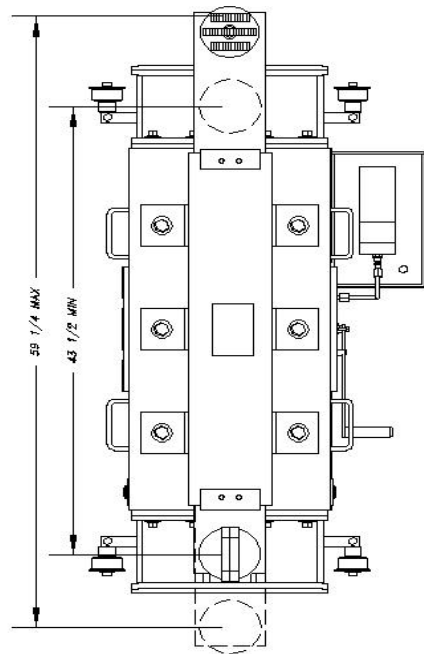
NOTES:
1. UNLESS OTHERWISE SPECIFIED, ALL DIMENSIONS ARE IN INCHES.
2. UNLESS OTHERWISE SPECIFIED, SURFACE FINISH TO BE PER 305.
3. DIMENSIONS SHALL CONFORM TO AWS D1.1.
4. DIMENSIONS SHALL CONFORM TO AWS D1.1.
5. DIMENSIONS SHALL CONFORM TO AWS D1.1.

TOLERANCES:
DIMENSIONS ± .005
DIMENSIONS ± .005
DIMENSIONS ± .005

FILE NAME: 025-050-046
NEXT ASSEMBLY

SCALE: 1/4" = 1"
DATE: 9/12
WEIGHT: 804 LB

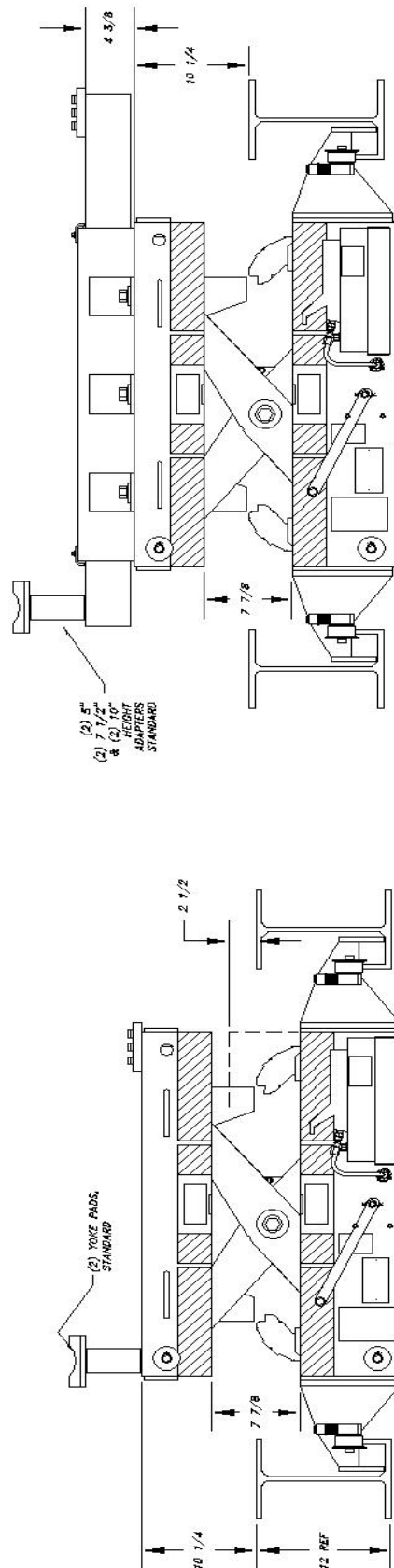
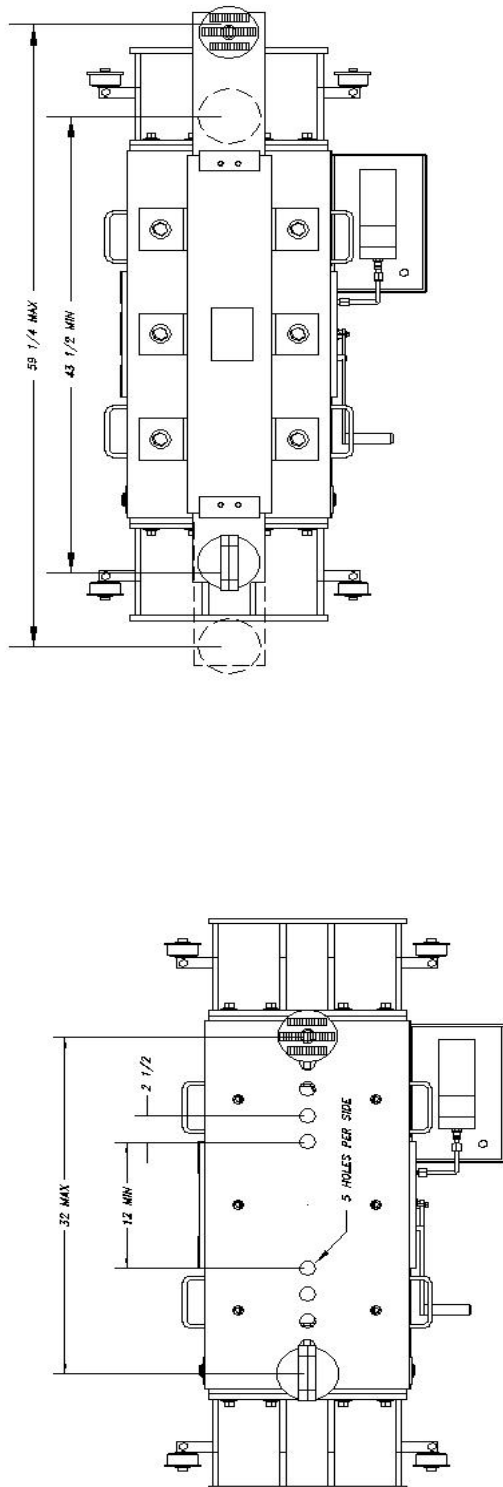
DRAWN BY: APPROVED BY: MOHAWK RESOURCES LTD.
TITLE: RJ-50-AH-20000 SERIES
REV: 1.0
DRAWING NUMBER: 025-050-046



RJ-50-AH-37500-P SERIES AIR/HYD JACKING BEAM:
(PARALLELOGRAM VERSION, RATED 37,500 LBS MAX)
CAPACITY DEPENDENT ON LIFT CAPACITY

RJ-50-AH-37500-P SERIES JACKING BEAM SHOWN ABOVE
WITH OPTIONAL SLIDER ARM ATTACHMENT:
RE-RATED TO 15,000 LB CAPACITY

<p>NOTICE OF CONFIDENTIAL INFORMATION</p> <p>INFORMATION CONTAINED HEREIN IS CONFIDENTIAL AND PROPERTY OF MOHAWK RESOURCES LTD. ANY DISCLOSURE OR REPRODUCTION OF ANY INFORMATION CONTAINED HEREIN WITHOUT THE WRITTEN PERMISSION OF MOHAWK RESOURCES LTD. IS PROHIBITED. IF YOU ARE NOT AN EMPLOYEE OF MOHAWK RESOURCES LTD. YOU SHOULD NOT BE RECEIVING THIS DOCUMENT. IF YOU ARE AN EMPLOYEE OF MOHAWK RESOURCES LTD. YOU SHOULD NOT DISCLOSE THIS INFORMATION TO ANY OTHER PERSON WITHOUT THE WRITTEN PERMISSION OF MOHAWK RESOURCES LTD.</p>		<p>NOTES:</p> <p>1. FINISHES ALL SHARP CORNERS & EDGES. 2. UNLESS OTHERWISE SPECIFIED, SURFACE FINISH TO BE 125 RMS. 3. VELDING INCLIN SHALL CONFORM TO AWS SPECIFICATIONS FOR E-70XX ELECTRODES. E-70XX CODE 53 FLUX CODE VRC ONLY.</p>		<p>TOLERANCES:</p> <p>ANGULAR: ± 1° DIMENSIONAL: ± .030 HOLE: ± .008 HOLE: ± .008</p>		<p>TO FINISHES:</p> <p>025-050-047</p>		<p>FILE NAME:</p> <p>025-050-047</p>		<p>NET ASSEMBLY</p>	
<p>MOHAWK RESOURCES LTD.</p>		<p>SCALE</p> <p>1/4"</p>		<p>DATE</p> <p>07/12</p>		<p>WEIGHT</p> <p>854</p>		<p>TRADING NUMBER</p> <p>025-050-047</p>		<p>FROM</p> <p>LIB</p>	
<p>TITLE</p> <p>30-44-37500-P SPEC R/R Assy for Penetration</p>		<p>APPROVED</p>		<p>DECDED</p>		<p>BROWN</p> <p>74</p>		<p>FROM</p>		<p>LIB</p>	

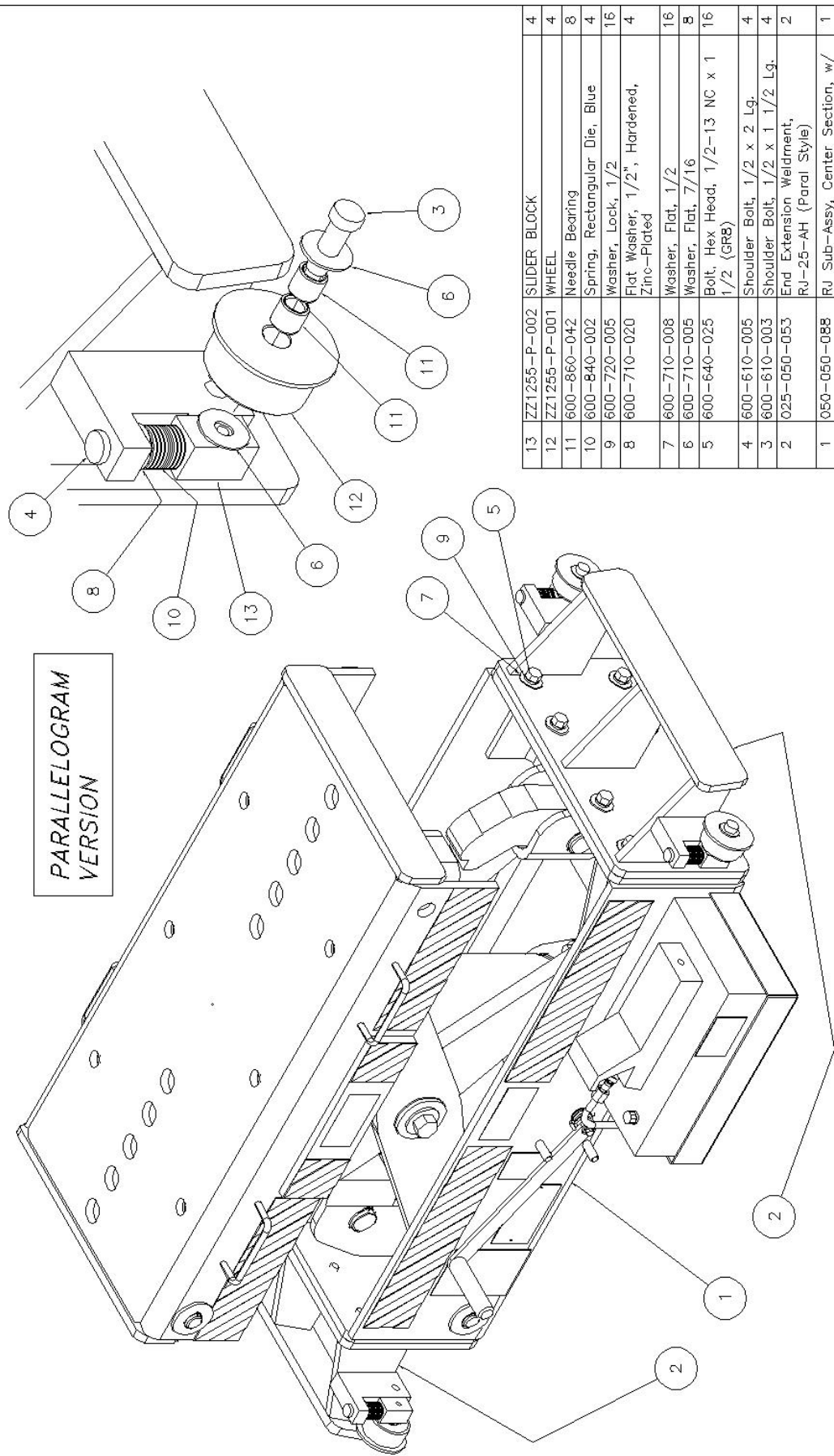


RJ-50-AH-50000 SERIES AIR/HYD JACKING BEAM:
(TR-75 VERSION, RATED 50,000 LBS MAX)
CAPACITY DEPENDENT ON LIFT CAPACITY

RJ-50-AH-50000 SERIES JACKING BEAM SHOWN ABOVE
WITH OPTIONAL SLIDER ARM ATTACHMENT:
RE-RATED TO 15,000 LB CAPACITY

<p>NOTICE OF CONFIDENTIAL INFORMATION</p> <p>INFORMING ORIANTEL KENNEL IS CONFIDENTIAL, AND PROPERTY OF KENNEL INDUSTRIES, INC. THIS INFORMATION IS TRANSMITTED TO OTHERS BY AUTHORITY OF KENNEL INDUSTRIES, INC. IT IS NOT TO BE DISCLOSED OR REPRODUCED IN ANY MANNER WITHOUT THE WRITTEN PERMISSION OF KENNEL INDUSTRIES, INC. IF THE RECIPIENT FOR ANY OTHER PURPOSES HANDLED.</p>		<p>NOTES:</p> <ol style="list-style-type: none"> 1. BONDING ALL SHARP CORNERS & EDGES. 2. INACCESSIBLE INTERFACES SPECIFIED, SURFACE FINISH TO BE 32 RMS. 3. VELDING NEEDN SHALL CONFORM TO AWS SPECIFICATIONS TO E-70XX ELECTRODES OR E-70XX COE 55 FLUX COE VIDE ONLY. 		<p>TIL DRAVES:</p> <p>PROF. FINISH $\pm .002$ $\pm .005$ $\pm .008$</p>		<p>SCALE $1/4$</p>		<p>DRAWN FJ</p>		<p>MOHAWK RESOURCES LTD.</p>	
		<p>FILE NAME 025-050-048</p>		<p>DATE 9/7/12</p>		<p>WEIGHT 854 LB.</p>		<p>APPROVED</p>		<p>TITLE 82-50-AH-50000 SPEC <i>Re key for 78-75</i></p>	
		<p>HEAT ASSY 025-050-048</p>						<p>FRON</p>		<p>FAVORITE NUMBER 025-050-048</p>	



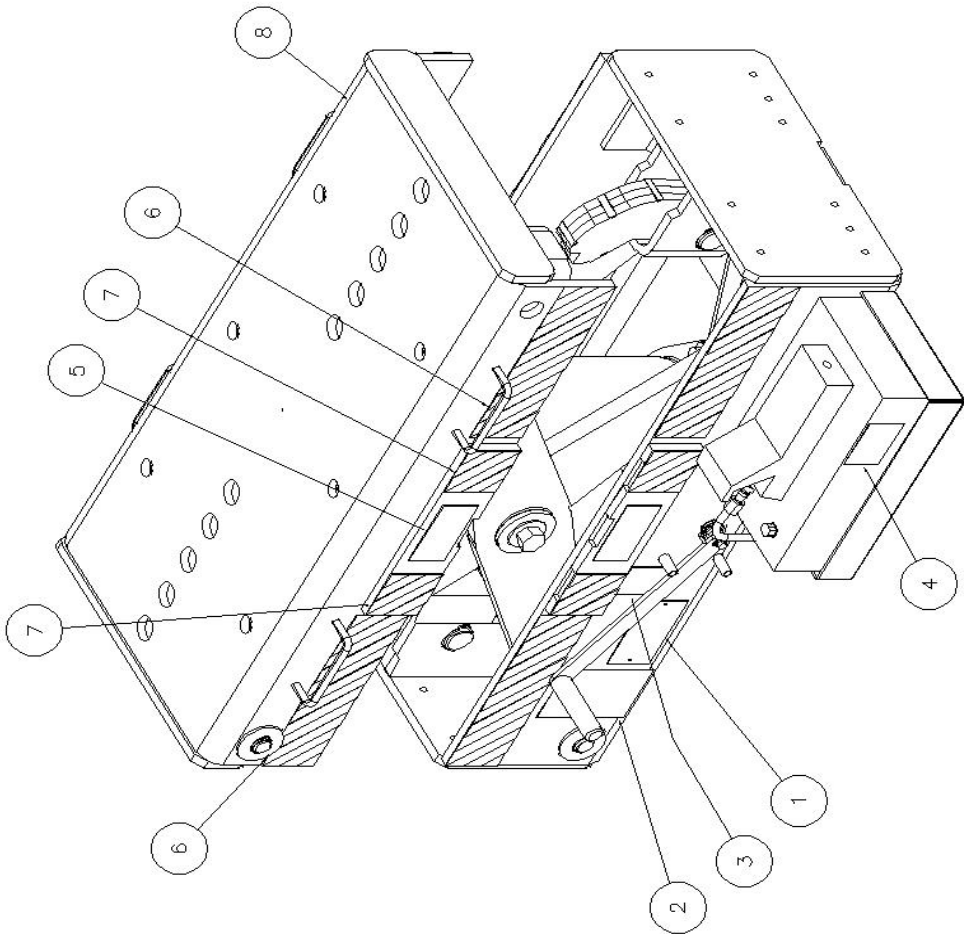


ITEM	NAME	DESCRIPTION	QTY
13	ZZ1255-P-002	SLIDER BLOCK	4
12	ZZ1255-P-001	WHEEL	4
11	600-860-042	Needle Bearing	8
10	600-840-002	Spring, Rectangular Die, Blue	4
9	600-720-005	Washer, Lock, 1/2	16
8	600-710-020	Flat Washer, 1/2", Hardened, Zinc-Plated	4
7	600-710-008	Washer, Flat, 1/2	16
6	600-710-005	Washer, Flat, 7/16	8
5	600-640-025	Bolt, Hex Head, 1/2-13 NC x 1 1/2 (GR8)	16
4	600-610-005	Shoulder Bolt, 1/2 x 2 Lg.	4
3	600-610-003	Shoulder Bolt, 1/2 x 1 1/2 Lg.	4
2	025-050-053	End Extension Weldment, RJ-25-AH (Paral Style)	2
1	050-050-088	RJ Sub-Assy, Center Section, w/ Tag & Decals, RJ-50-AH	1

NOTICE OF CONFIDENTIAL INFORMATION	TELEPHONES 1 15	DATE 7/20/03	QTY 1
ALL INFORMATION CONTAINED HEREIN IS UNCLASSIFIED EXCEPT WHERE SHOWN OTHERWISE. THIS DOCUMENT IS THE PROPERTY OF MOHAWK RESOURCES LTD. AND IS NOT TO BE REPRODUCED OR TRANSMITTED IN ANY FORM OR BY ANY MEANS, ELECTRONIC OR MECHANICAL, INCLUDING PHOTOCOPYING, RECORDING, OR BY ANY INFORMATION STORAGE AND RETRIEVAL SYSTEM, WITHOUT PERMISSION IN WRITING FROM MOHAWK RESOURCES LTD.	TELEFONES 1 15	DATE 7/20/03	QTY 1
NOTES: 1. ALL DIMENSIONS ARE IN INCHES UNLESS OTHERWISE SPECIFIED. SURFACE FINISH TO BE AS SPECIFIED. 2. ALL DIMENSIONS ARE TO CENTER UNLESS OTHERWISE SPECIFIED. 3. SPECIFICATIONS TO E-770X ELECTRONICS OF E-771 CODE 53 FLUX CODE VISE DLY.	TELEFONES 1 15	DATE 7/20/03	QTY 1
FILE NAME 050-050-	TELEFONES 1 15	DATE 7/20/03	QTY 1

SHEET 1 OF 4

D-SIZE



8	050-050-091	RJ-50-AH Sub-Assy, Center Section	1
7	050-050-412	Striped Tape, Black/Yellow	8
6	025-050-411	Striped Tape, Black/Yellow	8
5	601-800-399	Decal, Warning, Pinch Point, Keep Hands Clear During Operation.	4
4	601-800-398	Decal, RJ-50-AH, RAISE/LOWER	1
3	601-800-397	Decal, RJ-50-AH, Lock Release Handle	1
2	601-800-396	Decal, RJ-50-AH Capacity	1
1	601-800-026	Plate, Serial, Spec, Patent (BLANK)	1
ITEM	NAME	DESCRIPTION	QTY

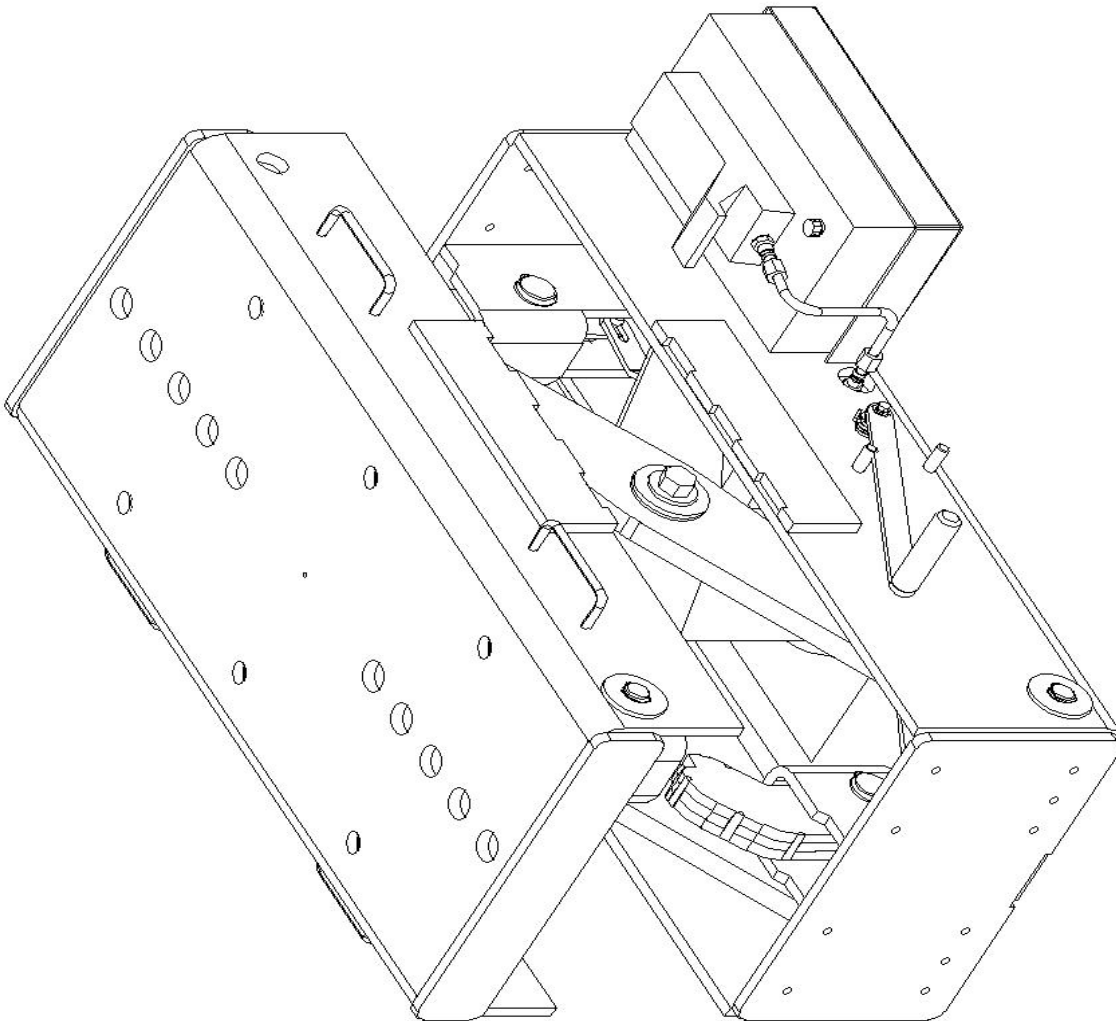
Parts List

NOTICE OF CONFIDENTIAL INFORMATION	TELEPHONES: 1-800-850-0500	DATE: 10/20/02	MOHAWK RESOURCES LTD.
THIS DOCUMENT CONTAINS INFORMATION THAT IS PROPRIETARY TO MOHAWK RESOURCES LTD. AND IS NOT TO BE DISCLOSED TO ANY OTHER PARTY WITHOUT THE WRITTEN PERMISSION OF MOHAWK RESOURCES LTD.	TELEFONES: 1-800-850-0500	DATE: 10/20/02	MOHAWK RESOURCES LTD.
FOR INFORMATION PURPOSES ONLY, THIS DOCUMENT IS NOT TO BE USED FOR REPRODUCTION OR FOR ANY OTHER PURPOSES WITHOUT THE WRITTEN PERMISSION OF MOHAWK RESOURCES LTD.	TELEFONES: 1-800-850-0500	DATE: 10/20/02	MOHAWK RESOURCES LTD.

D-SIZE

#	DESCRIPTION	DATE	APPROVED
A	1) Item 11 was 600-860-072 RW7088	07/23/2019	RW7088
	2) Item 25 was 600-860-049		
	3) Item 26 was 600-860-016 RW7088	07/23/2019	RW7088
	4) Item 22 was 600-840-014		
	5) Item 8 was 1/2 UNF.	07/23/2019	RW7088

ITEM	NAME	DESCRIPTION	QTY
40	600-840-037	Spring, Extension, .75 Dia X 2 Lg	2
39	601-420-004	Straight, #8 JIC to 3/8 MNPT	1
38	601-300-108	Air Pump with Hydraulic Reservoir	1
37	600-870-004	Snap Ring, External, 1 1/2	4
36	600-870-002	Snap Ring, External, 1"	8
35			0
34	600-860-047	Thrust Bearing	6
33	600-860-044	Bushing, Bronze	1
32	600-850-032	Shaft Collar, Clamp Type, 3/4 Shaft	1
31	600-720-008	Washer, Lock, 3/4	2
30	600-720-007	Washer, Lock, 1/4	2
29	600-710-010	Washer, Flat, 1"	4
28	600-710-008	Washer, Flat, 1/2	2
27	600-710-004	Washer, Flat, 1/4	2
26	600-710-001	Washer, Flat, 3/4	4
25	600-680-016	Nut, Plain, 3/4-10 NC	2
24	600-640-215	Bolt, Hex Head, 3/4-10 NC x 4" (GR8)	2
23	600-640-134	Bolt, Hex Head, 1/2-13 NC x 1 1/4 (GR8)	2
22	600-640-042	Bolt, Hex Head, 1/4-20 NC x 1/2 (GR5)	3
21	600-610-010	Shoulder Bolt	4
20	600-600-035	Flat Head Screw	8
19	050-050-167	Spring, Torsion	1
18	050-050-166	Pivot Pin Washer	4
17	050-050-165	Pivot Pin	2
16	050-050-180	Cam Roller Wear Plate	4
15	050-050-159	Lock Pivot Pin	2
14	050-050-158	Lock Pivot Arm Spacer	1
13	050-050-155	Lock Pivot Arm	1
12	050-050-080	Lock Release Arm Weldment	1
11	050-050-095	Lock Weldment	2
10	025-050-157	Lock Release Shaft	1
9	025-050-156	Lock Release Arm	2
8	025-050-131	Pivot Arm Clevis Pin (Upper)	2
7	025-050-130	Pivot Arm Clevis Pin (Lower)	2
6	025-050-129	Lock Spacer, RJ-25-AH	4
5	025-050-072	Pivot Arm Assy, RJ-25-AH	4
4	025-050-071	Cylinder Assy, RJ-25-AH	1
3	050-050-093	Lower Jack Weldment, RJ-50-AH (Sectional Build)	1
2	050-050-092	Upper Jack Weldment, RJ-50-AH (Sectional Build)	1
1	025-050-044	Tubing Assy, 3/8 OD x 14 3/16 Lg	1



NOTICE OF CONFIDENTIAL INFORMATION
THIS DOCUMENT CONTAINS INFORMATION THAT IS UNCLASSIFIED
EXCEPT WHERE SHOWN OTHERWISE. IT IS THE PROPERTY OF
MOHAWK INDUSTRIES, INC. AND IS LOANED TO YOUR FIRM.
IT IS NOT TO BE REPRODUCED OR TRANSMITTED IN ANY FORM
OR BY ANY MEANS, ELECTRONIC OR MECHANICAL, INCLUDING
PHOTOCOPYING, RECORDING, OR BY ANY INFORMATION STORAGE
AND RETRIEVAL SYSTEM, WITHOUT PERMISSION IN WRITING
FROM MOHAWK INDUSTRIES, INC.

NOTES:
1. REMOVE ALL SHARP EDGES & CHISELS.
2. UNLESS OTHERWISE SPECIFIED, SURFACE
FINISH TO BE 25 RMS. CONFORM TO AMS
SPECIFICATIONS TO E-7000 ELECTRONICS OR
E-7001 CODE 53 FLUX CORE WIRE ONLY.

TECHNICAL
DRAWING
160
188
FILE NAME
C50-050-091

NOT ASSEMBLY

DATE
4/20/15

HEIGHT
750

MOHAWK INDUSTRIES
RJ-50-AH Sub-assy

MOHAWK RESOURCES LTD.

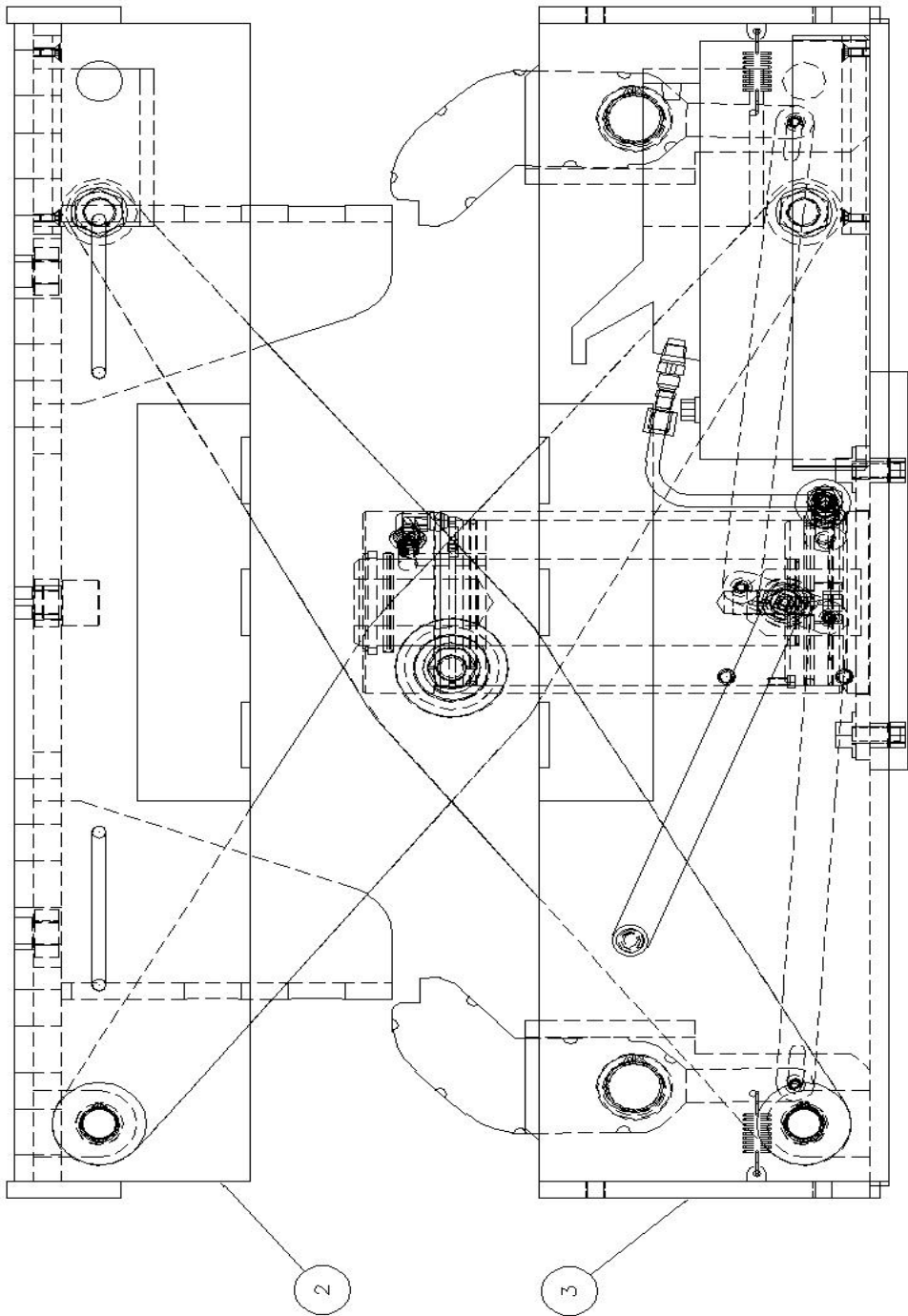
DATE
07/23/2019

APPROVED
RW7088

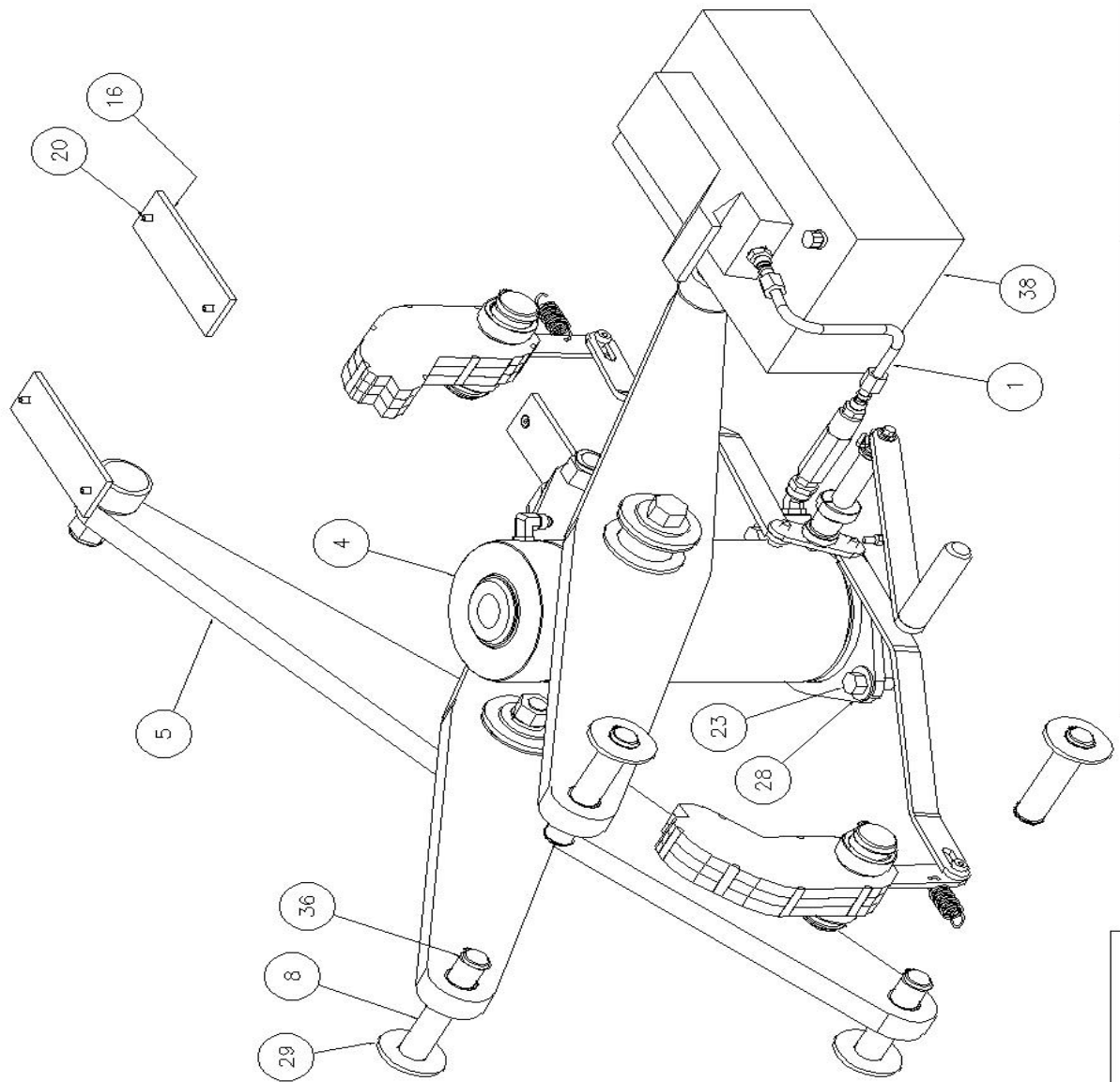
DESCRIPTION

#

PG 1 OF 5



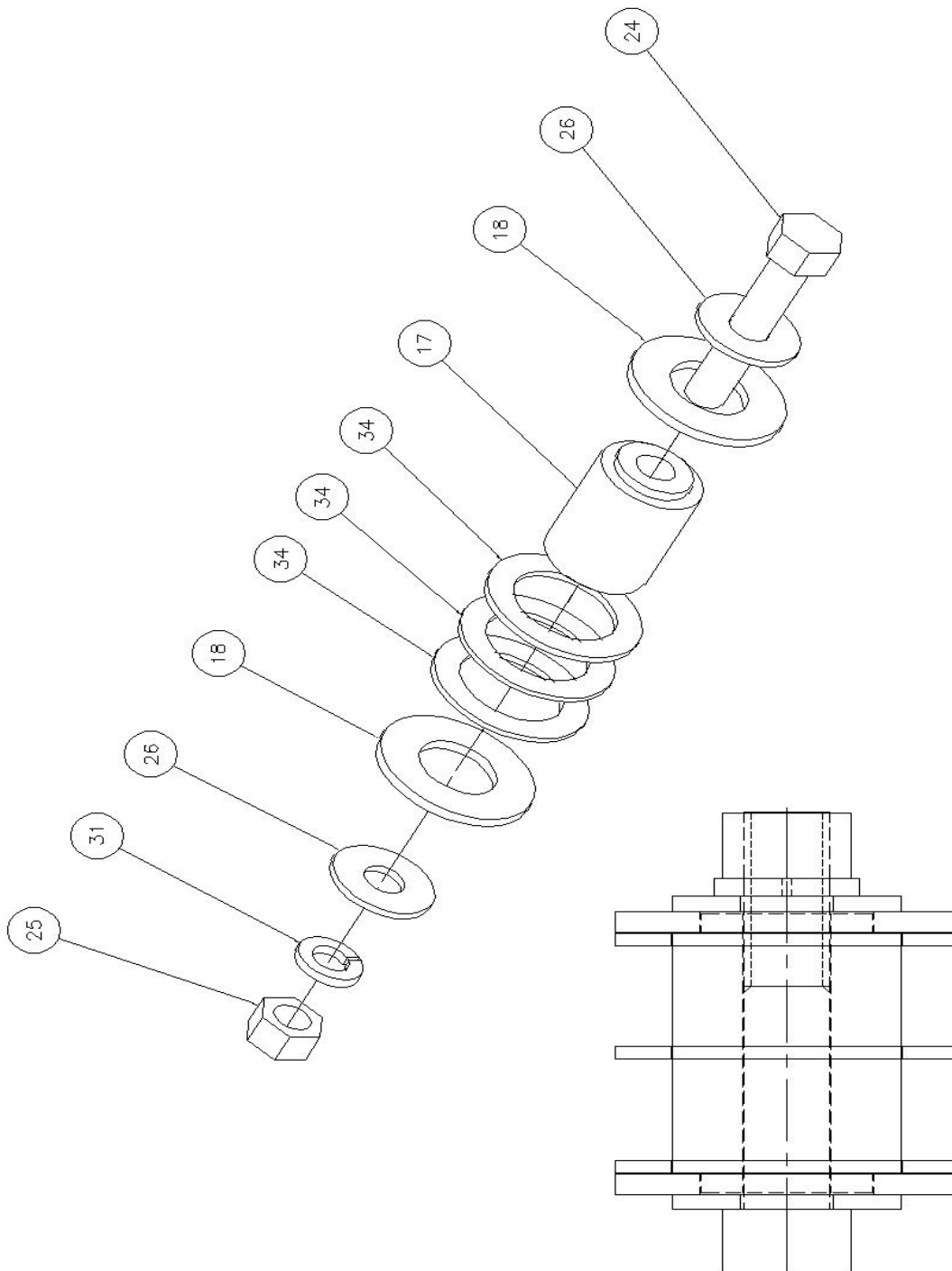
NOTICE OF CONFIDENTIAL INFORMATION		NOTES		TOLERANCES		DRAWN		MOHAWK RESOURCES LTD.	
ALL INFORMATION CONTAINED HEREIN IS UNCLASSIFIED AND UNCONTROLLED. IT IS THE PROPERTY OF MOHAWK RESOURCES LTD. AND IS LOANED TO YOUR COMPANY FOR YOUR USE ONLY. IT IS NOT TO BE REPRODUCED, COPIED, OR DISTRIBUTED OUTSIDE YOUR COMPANY WITHOUT THE WRITTEN PERMISSION OF MOHAWK RESOURCES LTD. IF THE REPRODUCED FOR ANY OTHER PURPOSES WITHOUT THE WRITTEN PERMISSION OF MOHAWK RESOURCES LTD.		1. REMOVE ALL SHARP CORNERS & EDGES. 2. UNLESS OTHERWISE SPECIFIED, SURFACE FINISH TO BE AS SPEC. UNLESS OTHERWISE SPECIFIED. 3. UNLESS OTHERWISE SPECIFIED, DIMENSIONS TO FACE. 4. UNLESS OTHERWISE SPECIFIED, DIMENSIONS TO CENTERLINE. 5. UNLESS OTHERWISE SPECIFIED, DIMENSIONS TO CENTERLINE. 6. UNLESS OTHERWISE SPECIFIED, DIMENSIONS TO CENTERLINE. 7. UNLESS OTHERWISE SPECIFIED, DIMENSIONS TO CENTERLINE. 8. UNLESS OTHERWISE SPECIFIED, DIMENSIONS TO CENTERLINE. 9. UNLESS OTHERWISE SPECIFIED, DIMENSIONS TO CENTERLINE. 10. UNLESS OTHERWISE SPECIFIED, DIMENSIONS TO CENTERLINE.		TOLERANCES FRACTIONS DECIMALS ANGLES HOLE DIA. SHAFT DIA. HOLE DIA. SHAFT DIA. HOLE DIA. SHAFT DIA.		7/9 7/9/2009		MOHAWK RESOURCES LTD.	
						APPROVED		TITLE	
						7/9/2009		RJ-50-AH Sub-Assembly	
						DATE		DRAWN	
						7/9/2009		7/9/2009	
								MOHAWK RESOURCES LTD.	
								7/9/2009	
								7/9/2009	
								7/9/2009	
								7/9/2009	
								7/9/2009	
								7/9/2009	
								7/9/2009	
								7/9/2009	
								7/9/2009	
								7/9/2009	
								7/9/2009	
								7/9/2009	
								7/9/2009	
								7/9/2009	
								7/9/2009	
								7/9/2009	
								7/9/2009	
								7/9/2009	
								7/9/2009	
								7/9/2009	
								7/9/2009	
								7/9/2009	
								7/9/2009	
								7/9/2009	
								7/9/2009	
								7/9/2009	
								7/9/2009	
								7/9/2009	
								7/9/2009	
								7/9/2009	
								7/9/2009	
								7/9/2009	
								7/9/2009	
								7/9/2009	
								7/9/2009	
								7/9/2009	
								7/9/2009	
								7/9/2009	
								7/9/2009	
								7/9/2009	
								7/9/2009	
								7/9/2009	
								7/9/2009	
								7/9/2009	
								7/9/2009	
								7/9/2009	
								7/9/2009	
								7/9/2009	
								7/9/2009	
								7/9/2009	
								7/9/2009	
								7/9/2009	
								7/9/2009	
								7/9/2009	
								7/9/2009	
								7/9/2009	
								7/9/2009	
								7/9/2009	
								7/9/2009	
								7/9/2009	
								7/9/2009	
								7/9/2009	
								7/9/2009	
								7/9/2009	
								7/9/2009	
								7/9/2009	
								7/9/2009	
								7/9/2009	
								7/9/2009	
								7/9/2009	
								7/9/2009	
								7/9/2009	
								7/9/2009	
								7/9/2009	
								7/9/2009	
								7/9/2009	
								7/9/2009	
								7/9/2009	
								7/9/2009	
								7/9/2009	
								7/9/2009	
								7/9/2009	
								7/9/2009	
								7/9/2009	
								7/9/2009	
								7/9/2009	
								7/9/2009	
								7/9/2009	
								7/9/2009	
								7/9/2009	
								7/9/2009	
								7/9/2009	
								7/9/2009	
								7/9/2009	
								7/9/2009	
								7/9/2009	
								7/9/2009	
								7/9/2009	
								7/9/2009	
								7/9/2009	
								7/9/2009	
								7/9/2009	
								7/9/2009	



PG 3 OF 5

D-SIZE

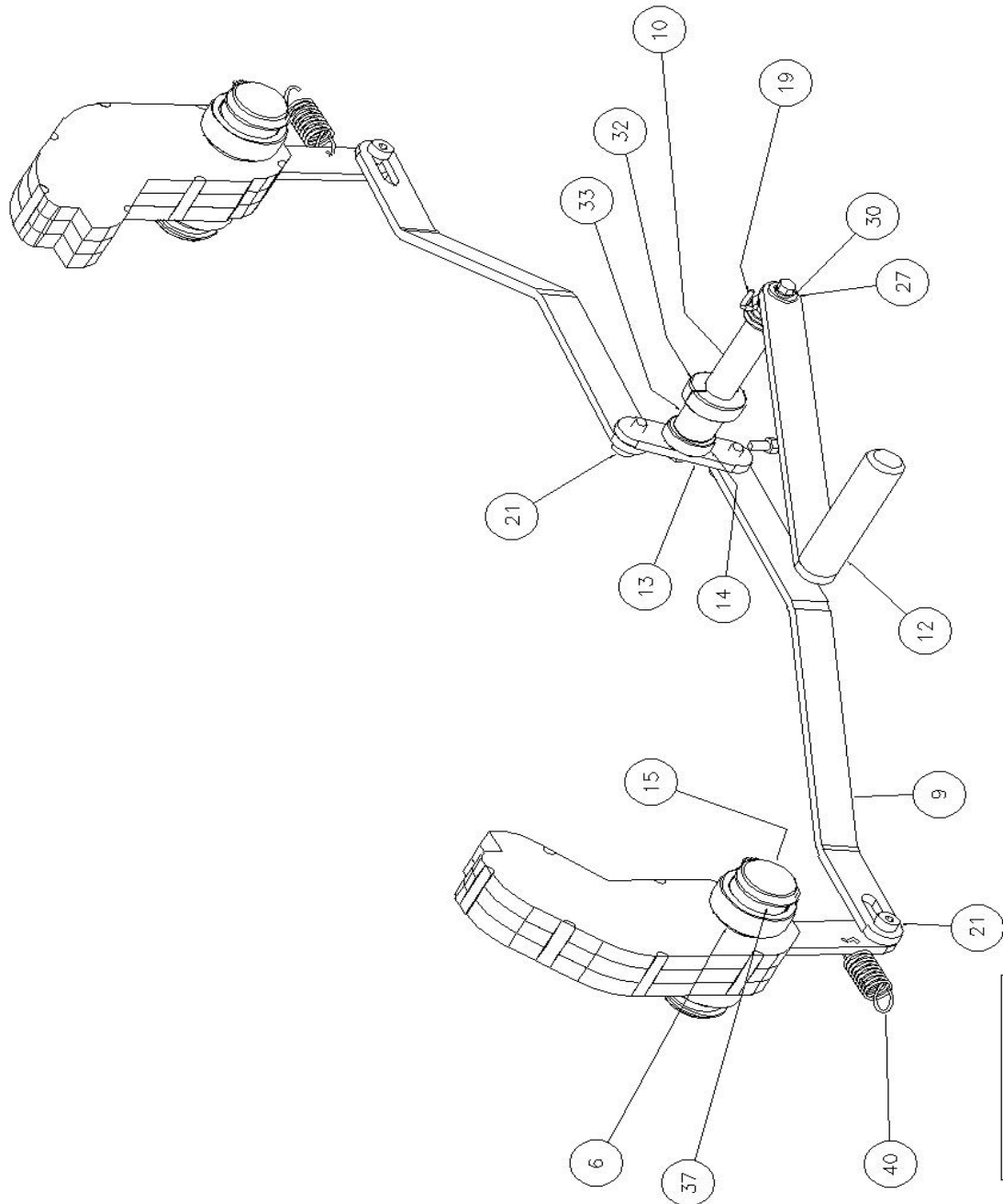
NOTICE OF CONFIDENTIAL INFORMATION		MOHAWK RESOURCES LTD.	
INFORMATION CONTAINED HEREIN IS CONFIDENTIAL AND PROPERTY OF MOHAWK RESOURCES LTD. IT IS TO BE KEPT SECRET AND NOT TO BE DISCLOSED OR REPRODUCED IN ANY MANNER WITHOUT THE WRITTEN PERMISSION OF MOHAWK RESOURCES LTD.		TITLE <i>Smiley Sprocket</i> RT-50-Art 350-Arty	
1. REMOVE ALL SHARP CORNERS & EDGES. 2. UNLESS OTHERWISE SPECIFIED, SURFACE FINISH TO BE 125 RMS. 3. UNLESS OTHERWISE SPECIFIED, DIMENSIONS TO BE AS SHOWN.		SCALE 1/2" = 1"	DRAWN PM/1989
4. UNLESS OTHERWISE SPECIFIED, SURFACE FINISH TO BE 125 RMS. 5. UNLESS OTHERWISE SPECIFIED, DIMENSIONS TO BE AS SHOWN.		DECIDED	APPROVED
6. UNLESS OTHERWISE SPECIFIED, SURFACE FINISH TO BE 125 RMS. 7. UNLESS OTHERWISE SPECIFIED, DIMENSIONS TO BE AS SHOWN.		050-050-	WEIGHT 750
8. UNLESS OTHERWISE SPECIFIED, SURFACE FINISH TO BE 125 RMS. 9. UNLESS OTHERWISE SPECIFIED, DIMENSIONS TO BE AS SHOWN.		DATE 6/20/93	FROM LA
10. UNLESS OTHERWISE SPECIFIED, SURFACE FINISH TO BE 125 RMS. 11. UNLESS OTHERWISE SPECIFIED, DIMENSIONS TO BE AS SHOWN.		FILE NAME 050-050-091	NEXT ASSEMBLY



PG 4 OF 5

D-SIZE

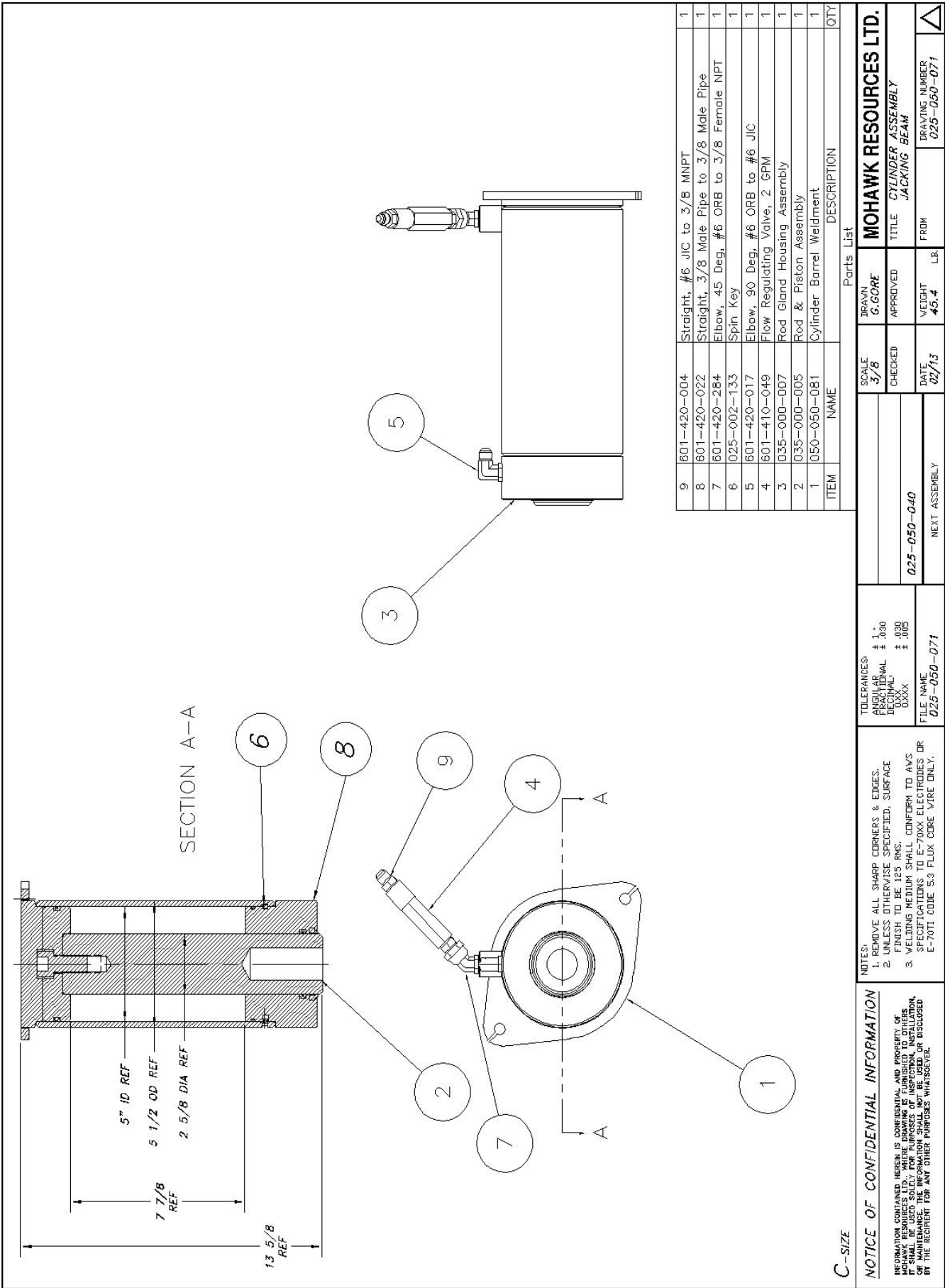
[illegible]

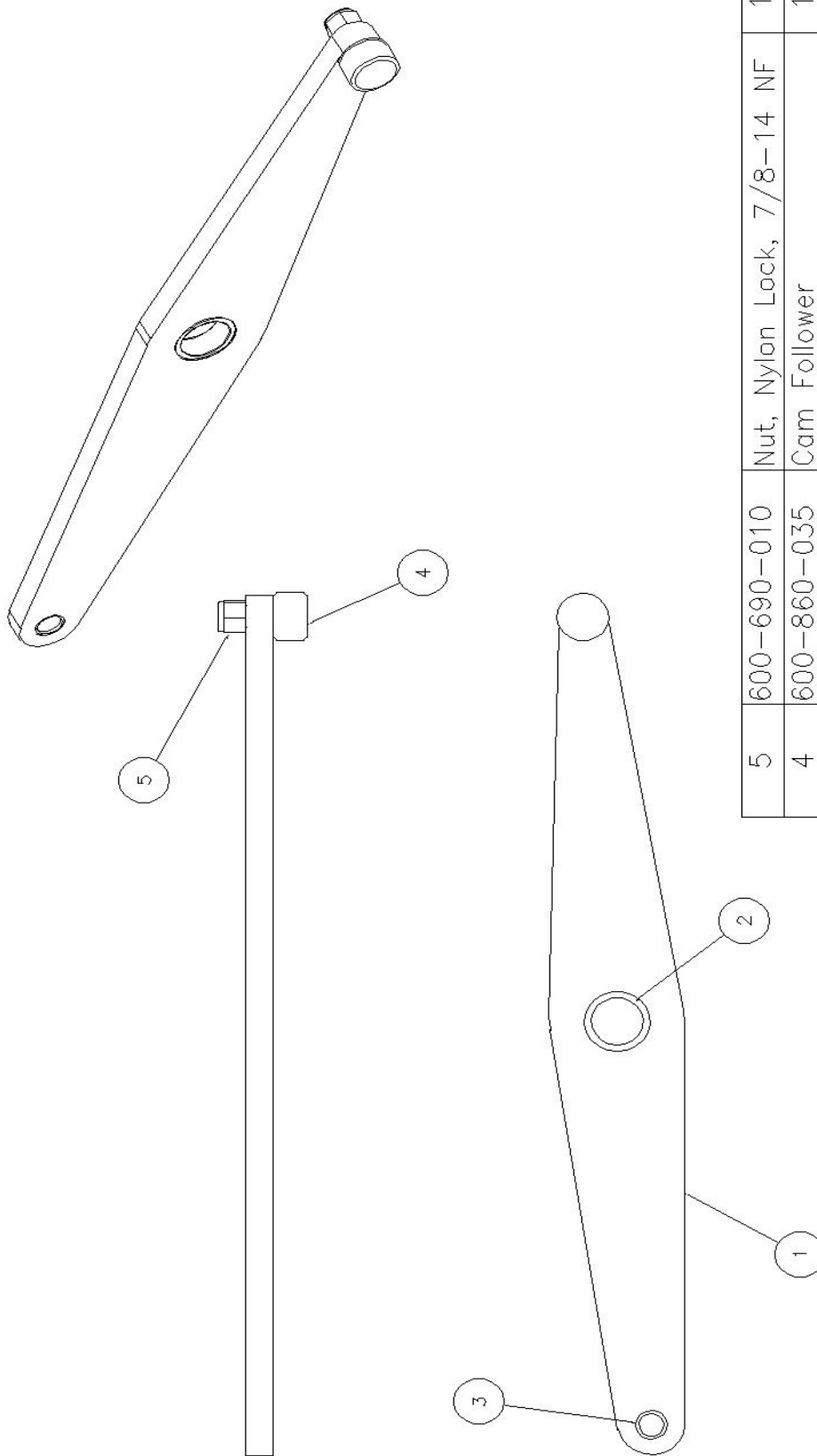


PG 5 OF 5

D-SIZE

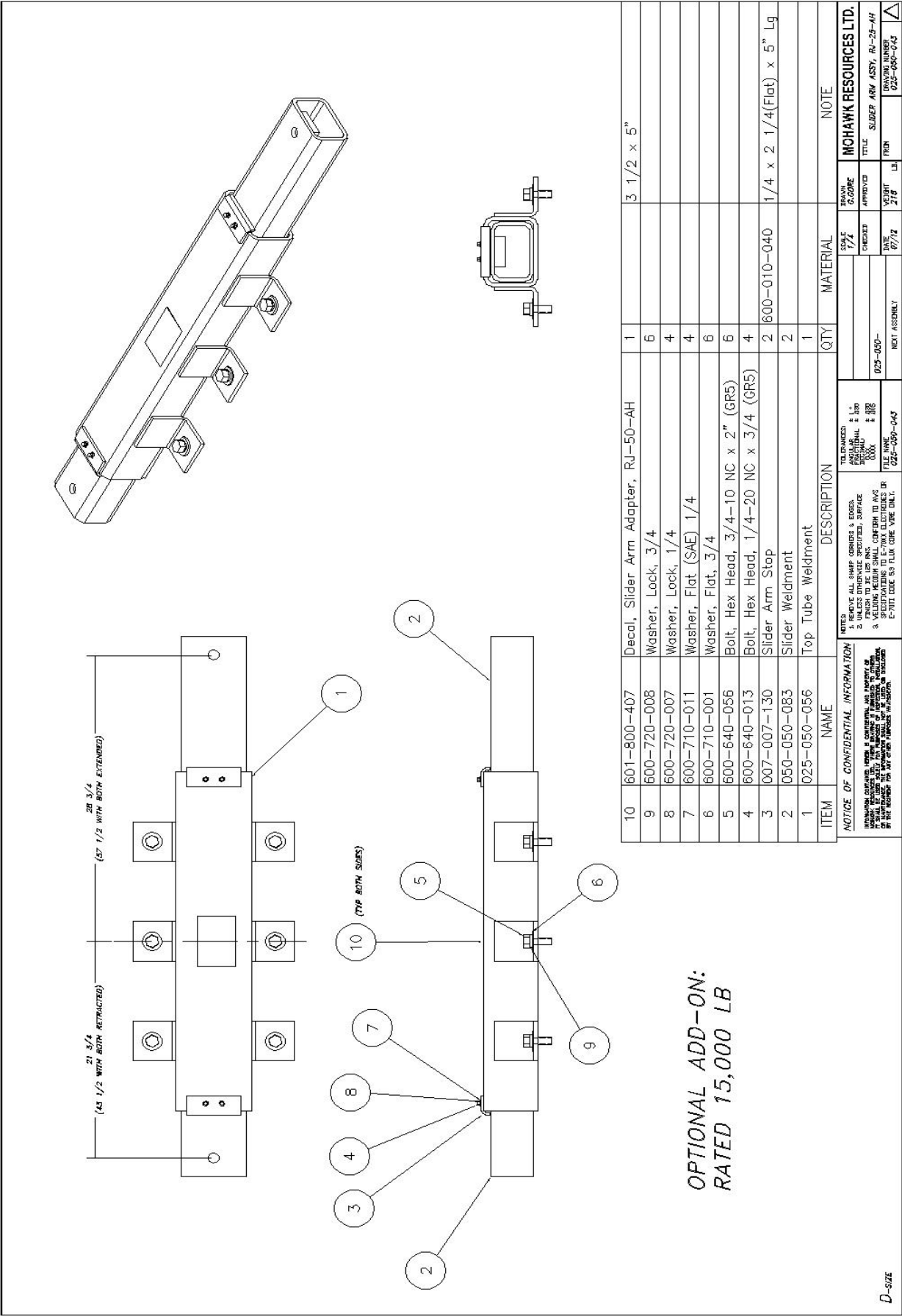
NOTICE OF CONFIDENTIAL INFORMATION		MOHAWK RESOURCES LTD.	
INFORMATION CONTAINED HEREIN IS CONFIDENTIAL AND PROPERTY OF MOHAWK RESOURCES LTD. IT IS TO BE KEPT SECRET AND NOT DISCLOSED OR LOANED TO ANY OTHER PERSON OR ORGANIZATION WITHOUT THE WRITTEN PERMISSION OF MOHAWK RESOURCES LTD.		TITLE <i>Center Section</i> <i>PL-86-481 53B-444</i>	
1. REMOVE ALL SHARP CORNERS & EDGES 2. UNLESS OTHERWISE PRECISED, SURFACE FINISH TO BE 325 MIC. 3. VALUING NEULON SHALL CONFORM TO AIB SPECIFICATIONS TO 3-7003. ELECTRODES OF 3-7011 ONE 53 FLUX CODE MORE ONLY.		SCALE <i>1/2</i>	DRAWN <i>PMW/2089</i>
TOLERANCES: ANGULAR ± 1° DIMENSIONAL ± .050 HOLE DIA. ± .010 TAP DIA. ± .010		CHECKED <i>050-050-</i>	APPROVED <i>050-050-091</i>
FILE NAME <i>050-050-091</i>		DATE <i>8/20/83</i>	
		NEXT ASSEMBLY <i>050-050-091</i>	
		PART NUMBER <i>050-050-091</i>	
		LOT <i>7/6</i>	
		A	





ITEM	NAME	TOLERANCES 1. HORIZONTAL ± .005 2. VERTICAL ± .005 3. ANGULAR ± .005	DESCRIPTION			QTY
			SCALE 1/2"	BEAN G-GONE	MOHAWK RESOURCES LTD.	
5	600-690-010	1. HORIZONTAL ± .005 2. VERTICAL ± .005 3. ANGULAR ± .005	1/2"	BEAN G-GONE	MOHAWK RESOURCES LTD.	1
4	600-860-035	1. HORIZONTAL ± .005 2. VERTICAL ± .005 3. ANGULAR ± .005	1/2"	BEAN G-GONE	MOHAWK RESOURCES LTD.	1
3	600-860-045	1. HORIZONTAL ± .005 2. VERTICAL ± .005 3. ANGULAR ± .005	1/2"	BEAN G-GONE	MOHAWK RESOURCES LTD.	1
2	050-050-154	1. HORIZONTAL ± .005 2. VERTICAL ± .005 3. ANGULAR ± .005	1/2"	BEAN G-GONE	MOHAWK RESOURCES LTD.	1
1	025-050-127	1. HORIZONTAL ± .005 2. VERTICAL ± .005 3. ANGULAR ± .005	1/2"	BEAN G-GONE	MOHAWK RESOURCES LTD.	1

NOTICE OF CONFIDENTIAL INFORMATION



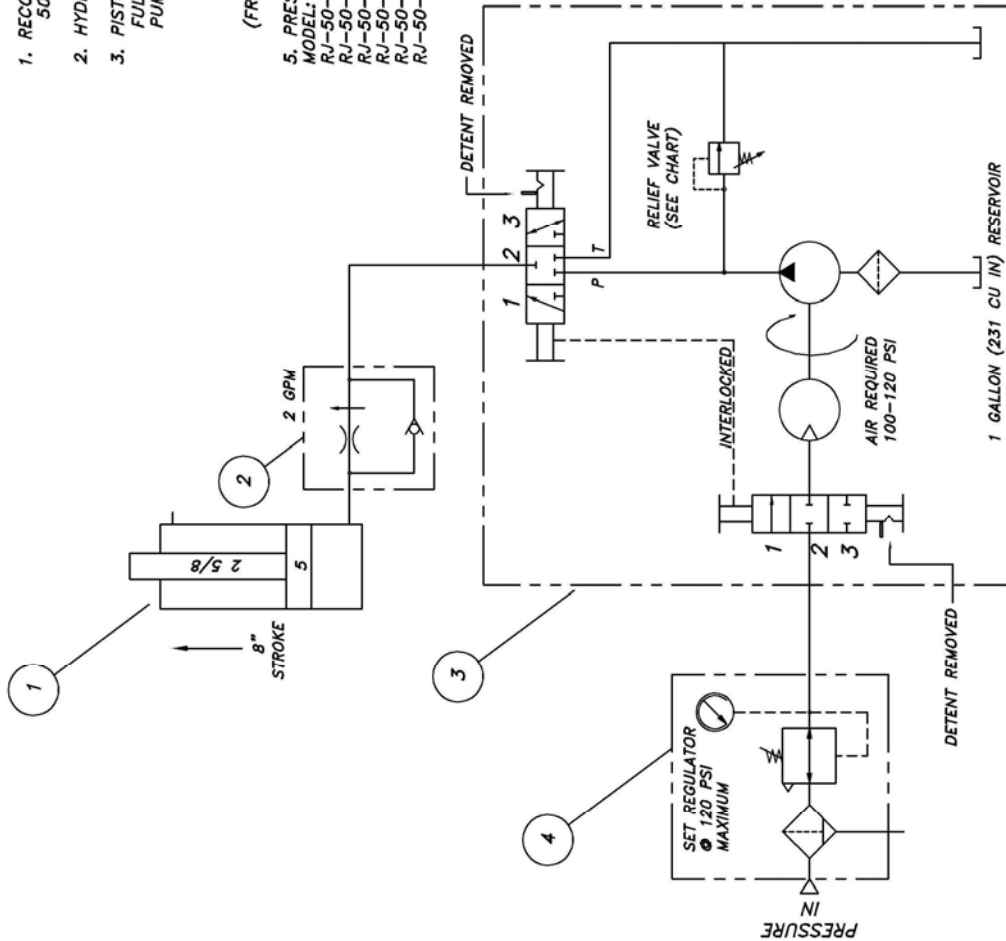
ITEM	NAME	DESCRIPTION	QTY	MATERIAL	NOTE
10	601-800-407	Decal, Slider Arm Adapter, RJ-50-AH	1		
9	600-720-008	Washer, Lock, 3/4	6		3 1/2 x 5"
8	600-720-007	Washer, Lock, 1/4	4		
7	600-710-011	Washer, Flat (SAE) 1/4	4		
6	600-710-001	Washer, Flat, 3/4	6		
5	600-640-056	Bolt, Hex Head, 3/4-10 NC x 2" (GR5)	6		
4	600-640-013	Bolt, Hex Head, 1/4-20 NC x 3/4 (GR5)	4		
3	007-007-130	Slider Arm Stop	2	600-010-040	1/4 x 2 1/4(Flat) x 5" Lg
2	050-050-083	Slider Weldment	2		
1	025-050-056	Top Tube Weldment	1		

NOTICE OF CONFIDENTIAL INFORMATION		TOLERANCES		DATE		DRAWING NUMBER	
1. REMOVE ALL SHARP CORNERS & EDGES. 2. PLACE DIMENSIONS ON SPECIFIED SURFACE. 3. VELDING MEDIAN SHALL CONFORM TO AWS SPECIFICATIONS TO E-70XX ELECTRODES OR E-70XX LUGS TO FLUX CORE WIRE (ILLU).		ANGULAR ± 1.0 DIMENSIONAL ± .005 HOLE ± .005		025-050-056		RJ-50-AH	
DRAWN C. COPE		CHECKED DATE 07/12		APPROVED DATE 07/12		WEIGHT 278 LB	
MOHAWK RESOURCES LTD.		TITLE		FROM		DRAWING NUMBER	
						025-050-045	

D-SIZE

NOTES:

1. RECOMMENDED OPERATING TEMPERATURE RANGE OF HYDRAULIC FLUID:
50 TO 130 DEG F.
2. HYDRAULIC FLUID MEDIUM: DEXRON III ATF
3. PISTON AREA = 19.635 SQ IN
FULL UP VOLUME = 154.63 CU IN (.67 GALLONS) @ 8 INCH STROKE
PUMP PERFORMANCE = 150 CU IN PER MINUTE @ 0 PSI
= 105 CU IN PER MINUTE @ 500 PSI
= 95 CU IN PER MINUTE @ 1000 PSI
= 70 CU IN PER MINUTE @ 2000 PSI
= 30 CU IN PER MINUTE @ 3000 PSI
(FROM SPEC SHEET GRAPH ON PUMP)
5. PRESSURE SETTINGS: (+300) (+10%)
MODEL: STATIC PSI: WORKING PSI: RELIEF PSI:
RJ-50-AH-25000: 1275 PSI 1573 PSI 1730 PSI
RJ-50-AH-28000: 1426 PSI 1726 PSI 1900 PSI
RJ-50-AH-31500: 1579 PSI 1879 PSI 2067 PSI
RJ-50-AH-35000: 1783 PSI 2083 PSI 2291 PSI
RJ-50-AH-37500: 1910 PSI 2210 PSI 2431 PSI
RJ-50-AH-50000: 2546 PSI 2846 PSI 3130 PSI



ITEM	PART NUMBER	DESCRIPTION	QTY
4	601-200-024	FILTER/REGULATOR PIGGYBACK W/GAUGE (1/4)	1
3	601-300-108	POWER UNIT, AIR/HYDR, 1 GALLON, 3200 PSI MAX	1
2	601-410-049	FLOW REGULATING VALVE, 2 GPM	REF
1	050-050-071	JACK CYLINDER ASSY	REF

C-SIZE

NOTICE OF CONFIDENTIAL INFORMATION

INFORMATION CONTAINED HEREIN IS CONFIDENTIAL AND PROPERTY OF MOHAWK RESOURCES LTD., WHERE DRAWING IS TURNED OVER TO OTHERS FOR USE IN CONNECTION WITH THE DESIGN, CONSTRUCTION, OPERATION, OR MAINTENANCE, THE INFORMATION SHALL NOT BE USED OR DISCLOSED BY THE RECIPIENT FOR ANY OTHER PURPOSES WHATSOEVER.

NOTES:

1. REMOVE ALL SHARP CORNERS & EDGES.
2. UNLESS OTHERWISE SPECIFIED, SURFACE FINISH TO BE 125 RMS.
3. WELDING MEDIUM SHALL CONFORM TO AWS SPECIFICATIONS TO E-70XX ELECTRODES OR E-70T1 CODE 5.3 FLUX CORE WIRE ONLY.

TOLERANCES:

- ANGULAR $\pm 1^\circ$
FRACTIONAL DECIMAL $\pm .020$
DIMENSIONAL $\pm .005$
FILE NAME 050-050-069

050-050-064

- CHECKED
DATE 9/1/2012
NEXT ASSEMBLY

SCALE

- DRAWN PW7089
APPROVED

MOHAWK RESOURCES LTD.

- TITLE RJ-50-AH Jack Beam Hydraulic Schematic
FROM n/a
DRAWING NUMBER 050-050-069



The messages and pictographs shown are generic in nature and are meant to generally represent hazards common to all automotive lifts regardless of specific style.

Funding for the development and validation of these labels was provided by the Automotive Lift Institute, PO Box 33116 Indialantic, FL 32903

They are protected by copyright. Set of labels may be obtained from ALI or its member companies

© 1992 by ALI, Inc. ALI/WL200c



The messages and pictographs shown are generic in nature and are meant to generally represent hazards common to all automotive lifts regardless of specific style.

Funding for the development and validation of these labels was provided by the Automotive Lift Institute, PO Box 33116 Indialantic, FL 32903.

They are protected by copyright. Set of labels may be obtained from ALI or its member companies.

© 1992 by ALI, Inc. ALI/WL200s

The messages and pictographs shown are generic in nature and are meant to generally represent hazards common to all automotive lifts regardless of specific style

Funding for the development and validation of these labels was provided by the Automotive Lift Institute, PO Box 33116 Indialantic, FL 32903.

They are protected by copyright. Set of labels may be obtained from ALI or its member companies

© 1992 by ALI, Inc. ALI/WL200w

MOHAWK LIFT PRODUCTS

The Lifts You Can't Wear Out



TWO POST

Model System IA-10



Model TP-20



FOUR POST

Model TR-75



MOBILE COLUMN

Model MP-18-007



PARALLELOGRAM

Model 75-32-F



VERTICAL RISE

Model V-77-30S

MOHAWK LIFTS

Mohawk Lifts, LLC.

P.O. Box 110 • 65 Vrooman Ave

Amsterdam, NY 12010

Phone: (800) 833-2006 • (518) 842-1431

www.mohawklifts.com

SEND US YOUR PHOTOS!

MOHAWK IS ALWAYS INTERESTED IN SEEING HOW YOUR LIFTS ARE USED. WE HAVE CREATED AN ON-LINE PHOTO DATABASE FOR CUSTOMERS TO VIEW OUR LIFTS IN USE.



VISIT WWW.MOHAWKLIFTS.COM/PR/ AND MAYBE WE CAN ADD YOUR PHOTOS TO OUR COLLECTION.
(JPG FORMATS PREFERRED)

E-MAIL YOUR PHOTOS AND COMMENTS TO:
PHOTOS@MOHAWKLIFTS.COM

BEST REGARDS & HAPPY LIFTING!

YOUR FRIENDS AT MOHAWK LIFTS