

MOHAWK

MADE IN THE USA

SPEEDLANE

OPTIONAL DRIVE-OVER PAD LIFT ADAPTORS FOR 2-POST LIFTS *



- ☒ INSTALLATION
- ☒ OPERATION
- ☒ MAINTENANCE
- ☒ PARTS

MOHAWK LIFTS, LLC.

65 VROOMAN AVE.

AMSTERDAM, NY 12010

TOLL FREE: 1-800-833-2006

LOCAL: 1-518-842-1431

FAX: 1-518-842-1289

INTERNET:

WWW.MOHAWKLIFTS.COM

E-MAIL:

SERVICE@MOHAWKLIFTS.COM

Speedlane 7-1-2015.doc

Rev Date 7/1/2015

Part #601-800-0XX

For Mohawk Models:

System IA

LMF-12

TP-16

&

TP-18 ONLY

IMPORTANT SAFETY INSTRUCTIONS

When using your garage equipment, basic safety precautions should always be followed, including the following:

1. Read all instructions.
2. Care must be taken as burns can occur from touching hot parts.
3. Do not operate equipment with a damaged cord or if the equipment has been dropped or damaged - until it has been examined by a qualified serviceman.
3. Do not let cord or hoses come in contact with hot manifolds or moving fan blades.
4. If an extension cord is necessary, a cord with a current rating equal to or more than that of the equipment should be used. Cords rated for less current than the equipment may overheat. Care should be taken to arrange the cord so that it will not be tripped over or pulled.
5. Always unplug equipment from electrical outlet when not in use. Never use the cord to pull the plug from the outlet. Grasp plug and pull to disconnect
6. To reduce the risk of fire, do not operate equipment in the vicinity of open containers of flammable liquids (gasoline). **WARNING: Risk of Explosion:** This equipment has internal arcing and sparking parts which should not be exposed to flammable vapors. This equipment is only suitable for installation in a garage having sufficient air circulation to be considered a non-hazardous location.
7. Adequate ventilation should be provided when working on operating internal combustion engines.
8. Keep hair, loose clothing, fingers, and all parts of body away from moving parts.
9. To reduce the risk of electric shock, do not use on wet surfaces or expose to rain.
10. Use only as described in this manual. Use only manufacturer's recommended attachments.
11. **ALWAYS WEAR SAFETY GLASSES.** Everyday eyeglasses only have impact resistant lenses, they are **NOT** safety glasses.

SAVE THESE INSTRUCTIONS

Rev (9/21/01)

HAVE A QUESTION?

**Call your local
Mohawk distributor
For parts, service and technical support.**

Distributor Place Card Here

Please have this unit's model and serial number when calling for service.

Model Number

Serial Number

OR CONTACT:

MOHAWK LIFTS, LLC.

65 Vrooman Ave.

P.O. Box 110

Amsterdam, NY 12010

Toll Free: 1-800-833-2006

Local: 1-518-842-1431

Fax: 1-518-842-1289

Internet: www.MOHAWKLIFTS.com

E-Mail: Service@MOHAWKLIFTS.com

MOHAWK WARRANTIES

EFFECTIVE DATE: 8/1/2013*

GENERAL WARRANTY INFORMATION:

MOHAWK'S OBLIGATION UNDER THIS WARRANTY IS LIMITED TO REPAIRING OR REPLACING ANY PART OR PARTS RETURNED TO THIS FACTORY, TRANSPORTATION CHARGES PREPAID, WHICH PROVE UPON INSPECTION TO BE DEFECTIVE AND WHICH HAVE NOT BEEN MISUSED. DAMAGE OR FAILURE TO ANY PART DUE TO FREIGHT DAMAGE OR LACK OF REQUIRED REGULAR DOCUMENTED MAINTENANCE IS NOT COVERED UNDER THIS WARRANTY. ALL WARRANTY CLAIMS MUST BE PERFORMED IN ACCORDANCE TO MOHAWK'S WARRANTY PARTS RETURN POLICY (CONTACT MOHAWK'S SERVICE DEPARTMENT FOR MORE INFORMATION).

THIS WARRANTY DOES NOT COVER MIS-DIAGNOSING OF UNIT OR PARTS RETURNED THAT ARE NON-DEFECTIVE. THIS WARRANTY DOES NOT COVER ANY CONSEQUENTIAL OR INCIDENTAL DAMAGES INCLUDING, BUT NOT LIMITED TO, LOST REVENUES OR BUSINESS HARM. THIS EQUIPMENT HAS BEEN DESIGNED FOR USE IN NORMAL COMMERCIAL VEHICLE MAINTENANCE APPLICATIONS. A SPECIFIC INDIVIDUAL WARRANTY MUST BE ISSUED FOR UNITS THAT DEVIATE FROM INTENDED USAGE, SUCH AS HIGH CYCLE USAGE IN INDUSTRIAL APPLICATIONS, OR USAGE IN EXTREMELY ABUSIVE ENVIRONMENTS, ETC. MOHAWK RESERVES THE RIGHT TO DECLINE RESPONSIBILITY WHEN REPAIRS HAVE BEEN MADE OR ATTEMPTED BY OTHERS. THIS WARRANTY DOES NOT COVER LABOR. THIS WARRANTY DOES NOT COVER DOWNTIME EXPENSES INCURRED WHEN UNIT IS IN REPAIR. THE LIFT MUST BE REGISTERED WITHIN 30 DAYS OF INSTALLATION BY MAILING SUPPLIED WARRANTY REGISTRATION CARD TO MOHAWK AND MUST BE SIGNED BY A LICENSED ELECTRICIAN. THE MODEL NAME AND SERIAL NUMBER OF THE EQUIPMENT MUST BE FURNISHED WITH ALL WARRANTY CLAIMS. THIS WARRANTY STATEMENT CONTAINS THE ENTIRE AGREEMENT BETWEEN MOHAWK LIFTS, LLC. AND THE PURCHASER UNLESS OTHERWISE SPECIFICALLY EXPRESSED IN WRITING. THIS NON-TRANSFERABLE WARRANTY APPLIES TO THE ORIGINAL PURCHASER ONLY. THIS WARRANTY IS APPLICABLE TO UNITS LOCATED ONLY IN THE UNITED STATES OF AMERICA AND CANADA. CONTACT MOHAWK LIFTS, LLC. FOR SPECIFIC WARRANTY PROVISIONS FOR UNITS LOCATED OUTSIDE OF THESE COUNTRIES.

THIS WARRANTY DOES NOT COVER NORMAL SURFACE WEAR ITEMS, ITEMS SUBJECT TO ABRASION, OR ITEMS USED IN A CORROSIVE ENVIRONMENT. SOME ITEMS ON LIFT ARE SUBJECT TO NORMAL "WEAR AND TEAR" AND ARE NOT COVERED UNDER THIS WARRANTY.

STRUCTURAL COMPONENTS (ALL LIFTS):

STRUCTURAL AND MECHANICAL COMPONENTS OF THIS UNIT ARE GUARANTEED FOR THE BELOW STATED TIME FRAME, SPECIFIC TO MODEL LISTED, FROM THE DATE OF SHIPMENT FROM FACTORY, AGAINST DEFECTS IN WORKMANSHIP AND/OR MATERIALS WHEN LIFT IS INSTALLED AND USED ACCORDING TO SPECIFICATIONS.

25-YEARS STRUCTURAL / 10 YEARS MECHANICAL: MODELS A-7, SYSTEM IA-10, LC-12, LC-12-3SA, LMF-12, TP-16, TP-18, TP-20, TP-26, TP-30. STRUCTURAL ITEMS COVERED INCLUDE LEG, CARRIAGE, SWING ARM AND SLIDER WELDMENTS (EXCLUDING NORMAL WEAR AREAS AS STATED ABOVE). MECHANICAL ITEMS COVERED INCLUDE ROLLER BEARINGS AND LIFTING CHAIN.

5-YEAR: MODELS TL-7.

3-YEAR: MODELS TR-19, TR-25, FL-25, TR-30, TR-33, TR-35, TR-50, TR-75, TR-110, TR-120, MP-SERIES, RP-SERIES LIFTS.

2-YEAR: MODELS PARALLELOGRAM SERIES LIFTS.

1-YEAR: MODELS TD-1000, TD-2000, CT-1000, USL-6000.

POWER UNIT (ALL LIFTS):

ALL POWER UNIT COMPONENTS (MOTOR, PUMP AND RESERVOIR) ARE GUARANTEED FOR TWO YEARS FOR PARTS, FROM THE DATE OF SHIPMENT FROM FACTORY, AGAINST DEFECTS IN WORKMANSHIP AND/OR MATERIALS WHEN THE LIFT IS INSTALLED, CONNECTED BY A LICENSED ELECTRICIAN AND USED ACCORDING TO SPECIFICATIONS.

ELECTRICAL COMPONENTS (ALL LIFTS):

ALL ELECTRICAL COMPONENTS (EXCLUDING MOTOR) ARE GUARANTEED FOR ONE YEAR FOR PARTS, FROM THE DATE OF SHIPMENT FROM FACTORY, AGAINST DEFECTS IN WORKMANSHIP AND/OR MATERIALS WHEN THE LIFT IS INSTALLED AND USED ACCORDING TO SPECIFICATIONS.

PNEUMATIC-AIR COMPONENTS (ALL LIFTS):

ALL PNEUMATIC (AIR) COMPONENTS (I.E. AIR CYLINDERS AND POPPET AIR VALVES) ARE GUARANTEED FOR ONE YEAR FOR PARTS, FROM THE DATE OF SHIPMENT FROM FACTORY, AGAINST DEFECTS IN WORKMANSHIP AND/OR MATERIALS WHEN THE LIFT IS INSTALLED AND USED ACCORDING TO SPECIFICATIONS.

HYDRAULIC CYLINDERS (MODEL SPECIFIC LIFTS):

THE FOLLOWING MODELS ARE GUARANTEED FOR 5 YEARS (PARTS ONLY), FROM DATE OF SHIPMENT FROM FACTORY, FOR HYDRAULIC CYLINDERS, AGAINST DEFECTS IN WORKMANSHIP AND/OR MATERIALS WHEN THE LIFT IS INSTALLED AND USED ACCORDING TO SPECIFICATIONS: A-7, SYSTEM IA-10, LC-12, LC-12-3SA, LMF-12, TP-16, TP-18, TP-20, TP-26, TP-30.

ALL OTHER MODELS ARE GUARANTEED FOR TWO YEARS (PARTS ONLY), FROM THE DATE OF SHIPMENT FROM FACTORY, FOR HYDRAULIC CYLINDERS, AGAINST DEFECTS IN WORKMANSHIP AND/OR MATERIALS WHEN THE LIFT IS INSTALLED AND USED ACCORDING TO SPECIFICATIONS (EXCLUDING USL-6000, WHICH IS ONE YEAR).

AFTER THE FIRST 5 YEARS FROM DATE OF SHIPMENT FROM FACTORY, THE "EXTENDED LIFETIME CYLINDER SEAL WARRANTY" (BELOW) IS APPLICABLE TO THE FOLLOWING MOHAWK LIFTS ONLY: A-7, SYSTEM IA-10, LC-12, LC-12-3SA, LMF-12, TP-16, TP-18, TP-20, TP-26, TP-30. SEE MOHAWK'S "EXTENDED LIFETIME CYLINDER SEAL WARRANTY" FOR SPECIFIC WARRANTY PROVISIONS FOR HYDRAULIC CYLINDERS.

THE "EXTENDED LIFETIME CYLINDER SEAL WARRANTY" IS AS FOLLOWS:

AS THE ORIGINAL PURCHASER OF A MOHAWK LIFT MANUFACTURED BY MOHAWK LIFTS, LLC. YOU ARE ENTITLED TO AN EXTENDED CYLINDER SEAL WARRANTY. TO QUALIFY FOR THIS WARRANTY, THE FOLLOWING CONDITIONS MUST BE MET:

ALL LIFTS MUST BE REGISTERED WITH MOHAWK LIFTS, LLC., P.O. BOX 110, 65 VROOMAN AVENUE, AMSTERDAM, NY 12010, WITH THE ORIGINAL CUSTOMER NAME, ADDRESS AND PHONE NUMBER, WITHIN 30 DAYS OF INSTALLATION. (USE POSTAGE PAID WARRANTY REGISTRATION CARD ATTACHED TO THE FRONT OF THE MANUAL PROVIDED.)

MOHAWK'S OBLIGATION UNDER THIS WARRANTY IS LIMITED TO SUPPLYING MODEL SPECIFIC CYLINDER SEALS. THE CUSTOMER IS RESPONSIBLE FOR SHIPPING AND HANDLING OF THE SEALS. MOHAWK IS NOT RESPONSIBLE/LIABLE FOR THE REBUILD OF CYLINDERS BY OTHERS. THIS WARRANTY IS NON-TRANSFERABLE AND RUNS TO THE ORIGINAL PURCHASER ONLY.

STANDARD OPTIONS (ALL LIFTS):

ALL STANDARD OPTIONS OF THIS UNIT ARE GUARANTEED FOR ONE YEAR FOR PARTS, FROM THE DATE OF SHIPMENT FROM FACTORY, AGAINST DEFECTS IN WORKMANSHIP AND/OR MATERIALS WHEN LIFT IS INSTALLED AND USED ACCORDING TO SPECIFICATIONS.

CUSTOM LIFTS AND OPTIONS:

ALL "CUSTOM" LIFTS AND/OR "CUSTOM" OPTIONS ARE GUARANTEED ON A CASE-BY-CASE BASIS. CONSULT MOHAWK FACTORY FOR DETAILS ON SPECIFIC CUSTOM LIFTS AND/OR OPTIONS.

WARRANTY EXCEPTIONS (ALL LIFTS):

ADJUSTMENTS: THIS WARRANTY DOES NOT COVER CASUAL AND ROUTINE ADJUSTMENTS SUCH AS, BUT NOT LIMITED TO: FITTINGS, ANCHOR BOLT RE-TIGHTENING, OR ANY SHIMMING OR ADJUSTMENTS REQUIRED DURING A PROPER AND PROFESSIONAL INSTALLATION BY A QUALIFIED INSTALLER.

MAINTENANCE AND INSPECTIONS: IF THIS UNIT IS NOT MAINTAINED AND INSPECTED IN ACCORDANCE TO THE RELEVANT SECTIONS IN THE USERS MANUAL FOR THIS SPECIFIC MODEL, WARRANTY IS VOID. OSHA, ANSI AND MOHAWK REQUIRE THAT RECORDS MUST BE MAINTAINED TO PROVE THAT INSPECTIONS AND MAINTENANCE OF THIS UNIT HAVE BEEN ROUTINELY PERFORMED BY QUALIFIED INDIVIDUALS.

ABUSE: IF THIS UNIT IS FOUND TO BE OVERLOADED (PURPOSELY OR UNKNOWINGLY), USED IN A SITUATION BEYOND ITS INTENDED FUNCTION, NOT MAINTAINED OR INSPECTED REGULARLY, OR USED IN AN ABUSIVE ENVIRONMENT OR BEYOND NORMAL SHOP USAGE, ETC., THIS WARRANTY IS VOID IN ITS ENTIRETY.

NON-EXISTENT PROBLEMS: FOR SERVICE VISITS, PART REPLACEMENTS, LABOR, ETC. FOR PARTS FOUND TO BE NON-DEFECTIVE, OR FOR A UNIT DIS-FUNCTION THAT DOES NOT EXIST, IT IS THE LIFT OWNER THAT REQUESTED THE SERVICE VISIT WHO BEARS THE RESPONSIBILITY OF ALL RELATED EXPENSES.

BATTERIES: ALL BATTERIES CARRY THE BATTERY MANUFACTURER'S WARRANTY. MAINTENANCE REQUIREMENTS AND ABUSE PROVISIONS ARE AS STATED BY THE BATTERY MANUFACTURER. REFER TO BATTERY MANUFACTURER'S WARRANTY.

SPECIAL/MODIFIED INSTALLATIONS: THIS WARRANTY DOES NOT COVER "NON-TRADITIONAL" INSTALLATIONS. INSTALLATIONS ARE TO BE DONE ACCORDING TO SPECIFICATIONS, OR THE WARRANTY IS VOID.

WEARABLE COMPONENTS: SOME ITEMS ON LIFTS ARE SUBJECT TO NORMAL "WEAR AND TEAR" AND ARE NOT COVERED UNDER THIS WARRANTY.

*** THIS WARRANTY SUPERSEDES ALL OTHER WARRANTY POLICIES PREVIOUSLY STATED AND IN ALL OTHER MOHAWK PRODUCT SPECIFIC LITERATURE (MANUALS, BROCHURES, ETC.).**

CONTENTS

TEXT

	PAGE
GENERAL NOTES & WARNINGS	2
SPECIFICATIONS	3
INSTALLATION INSTRUCTIONS	4
SAFETY TIPS	5
PRE - OPERATION CHECK LIST	6
PROPER USAGE INSTRUCTIONS	7
MAINTENANCE PROCEDURES	8

FIGURES & DIAGRAMS

	FIGURE	PAGE
SPEEDLANE PARTS LIST (Sys IA, LMF, TP-16, TP-18).....	1	10
ARM LOCK PLATE ASSEMBLY (Sys IA, LMF, TP-16, TP-18).....	2	11
ASSY OF PAD ON ARMS (Sys IA, LMF, TP-16, TP-18).....	3	12
ASSY OF PAD ON ARMS (Sys IA, LMF, TP-16, TP-18).....	4	13
ASSY OF PAD ON ARMS (Sys IA, LMF, TP-16, TP-18).....	5	14
UNIFORM WARNING, CAUTION & SAFETY DIAGRAMS		15, 16

ALL INFORMATION, ILLUSTRATIONS, AND SPECIFICATIONS IN THIS MANUAL ARE BASED ON THE LATEST PRODUCT INFORMATION AVAILABLE AT THE TIME OF PRINTING. WE RESERVE THE RIGHT TO MAKE CHANGES AT ANY TIME WITHOUT NOTICE.

GENERAL NOTES & WARNINGS

RECOMMENDATIONS BY THE INDIVIDUAL USER OR USING ORGANIZATION FOR IMPROVING THIS PUBLICATION OR ANY ASPECT OF THE PRODUCT ARE ENCOURAGED AND SHOULD BE FORWARDED IN WRITING TO:

**MOHAWK LIFTS, LLC.
PRODUCT IMPROVEMENTS
65 VROOMAN AVE.
AMSTERDAM, NY, 12010**

THIS IS NOT A VEHICLE LIFTING PROCEDURE MANUAL AND NO ATTEMPT IS MADE OR IMPLIED HEREIN TO INSTRUCT THE USER IN LIFTING METHODS PARTICULARLY TO THE INDIVIDUAL APPLICATION OF THE EQUIPMENT DESCRIBED IN THIS MANUAL. RATHER, THE CONTENTS OF THIS MANUAL ARE INTENDED AS A BASE LINE FOR OPERATION, MAINTENANCE, TROUBLE SHOOTING, AND PARTS LISTING OF THE UNIT AS IT STANDS ALONE AND AS IT IS INTENDED AND ANTICIPATED TO BE USED IN CONJUNCTION WITH OTHER EQUIPMENT.

PROPER APPLICATION OF THE EQUIPMENT DESCRIBED HEREIN IS LIMITED TO THE PARAMETERS DETAILED IN THE SPECIFICATIONS AND THE USES SET FORTH IN THE DESCRIPTIVE PASSAGES. ANY OTHER PROPOSED APPLICATION OF THIS EQUIPMENT SHOULD BE DOCUMENTED AND SUBMITTED IN WRITING TO MOHAWK LIFTS, LLC. FOR EXAMINATION. THE USER ASSUMES FULL RESPONSIBILITY FOR ANY EQUIPMENT DAMAGE, PERSONAL INJURY, OR ALTERATION OF THE EQUIPMENT DESCRIBED IN THIS MANUAL OR ANY SUBSEQUENT DAMAGES.

DO NOT WELD, APPLY HEAT, OR MODIFY THIS EQUIPMENT IN ANY MANNER WITHOUT WRITTEN AUTHORIZATION FROM MOHAWK LIFTS, LLC. CERTAIN ALLOY OR HEAT-TREATED COMPONENTS MAY BE DISTORTED OR WEAKENED, RESULTING IN AN UNSAFE CONDITION.

MOHAWK LIFTS, LLC. IS NOT RESPONSIBLE FOR DISTORTIONS, WHICH RESULT FROM WELDING ON THIS EQUIPMENT AFTER MANUFACTURING IS COMPLETED. UNAUTHORIZED WELDING, APPLICATION OF HEAT, OR MODIFICATION OF THIS EQUIPMENT VOIDS ANY AND / OR ALL APPLICABLE WARRANTIES COVERING THIS EQUIPMENT.

ALL WARRANTIES APPLICABLE TO THIS EQUIPMENT ARE CONTINGENT ON STRICT ADHERENCE TO THE MAINTENANCE SCHEDULES AND PROCEDURES IN THIS MANUAL.

KEEP ALL SHIELDS AND GUARDS IN PLACE. INSURE ALL SAFETY MECHANISMS ARE OPERABLE. KEEP HANDS, FEET, AND CLOTHING AWAY FROM POWER-DRIVEN AND MOVING PARTS.

IMPORTANT NOTE

A LEVEL FLOOR IS SUGGESTED FOR A PROPER INSTALLATION SITE AND WILL ENSURE LEVEL LIFTING. SMALL DIFFERENCES IN FLOOR SLOPES MAY BE COMPENSATED FOR WITH SPECIAL LIFTING PADS. ANY MAJOR SLOPE CHANGES WILL AFFECT THE LOW PROFILE HEIGHT OF THE LIFTING PADS AND / OR THE UNITS LEVEL LIFTING PERFORMANCE. IF A FLOOR IS OF QUESTIONABLE SLOPE, CONSIDER A SURVEY OF THE SIGHT AND / OR THE POSSIBILITY OF POURING A NEW LEVEL CONCRETE SLAB SECTION. SIMPLY STATED, FOR OPTIMUM LEVEL LIFTING, THE EQUIPMENT, AT BEST, CAN LIFT ONLY AS LEVEL AS THE FLOOR ON WHICH IT IS LOCATED... AND SHOULD NOT BE EXPECTED TO COMPENSATE FOR DRASTIC FLOOR SLOPE DIFFERENCES.

-- WARNING --

THIS EQUIPMENT IS TO BE INSTALLED ONLY ON A MOHAWK MODEL SYSTEM I, LMF-12, TP-15 SYMMETRICAL OR TOMAHAWK-9000 ASYMMETRICAL LIFTS (DEPENDING ON WHICH MODEL OF SPEEDLANE YOU HAVE). INSTALLING THIS ON ANY OTHER LIFT VOIDS WARRANTY AND COULD RESULT IN FATAL INJURY AND DAMAGE TO EQUIPMENT.

CAUTION

THE EQUIPMENT DESCRIBED IN THIS MANUAL COULD BE POTENTIALLY DANGEROUS IF IMPROPERLY OR CARELESSLY OPERATED. FOR THE PROTECTION OF ALL PERSONS AND EQUIPMENT, ONLY COMPETENTLY TRAINED OPERATORS WHO ARE CRITICALLY AWARE OF THE PROPER OPERATING PROCEDURES, POTENTIAL DANGERS, AND SPECIFIC APPLICATION OF THIS EQUIPMENT SHOULD BE ALLOWED TO TOUCH THE CONTROLS AT ANY TIME.

SAFE OPERATION OF THIS EQUIPMENT IS DEPENDENT ON USE, IN COMPLIANCE WITH THE OPERATION PROCEDURES OUTLINED IN THIS MANUAL ALONG WITH THE MAINTENANCE AND INSPECTION PROCEDURES WITH CONSIDERATION OF PREVAILING CONDITIONS.

THE EQUIPMENT DESCRIBED IN THIS MANUAL IS NEITHER DESIGNED NOR INTENDED FOR ANY APPLICATION ALONE OR IN CONJUNCTION WITH ANY OTHER EQUIPMENT THAT INVOLVES THE LIFTING OR MOVING OF PERSONS.

ALWAYS CONSULT THE VEHICLE LIFTING GUIDE FOR THE PROPER LIFTING POINTS ON ANY VEHICLE. THESE GUIDES ARE AVAILABLE FROM THE VEHICLE MANUFACTURERS.

AFTER LIFTING THE VEHICLE TO THE DESIRED HEIGHT, ALWAYS LOWER THE UNIT ONTO THE MECHANICAL SAFETIES. THE FORMING OF GOOD OPERATIONAL WORK HABITS WILL ELIMINATE OVERSIGHTS IN THE USE OF PROVIDED SAFETY DEVICES.

SPEEDLANE SPECIFICATIONS:

(ALL FIGURES BELOW ARE APPROXIMATE)

PAD WIDTH (SINGLE)	22"
PAD LENGTH (NOT INCLUDING RAMPS)	48"
TOTAL PAD LENGTH (INCLUDING RAMPS)	78"
PAD HEIGHT (FULLY LOWERED)	5 ½"
INNER WIDTH OF PADS	32"
OUTER WIDTH OF PADS	76"
RAMP APPROACH ANGLE	14 Degree
WEIGHT OF SINGLE PAD ASSEMBLY	103 LBS APPROX

INSTALLATION INSTRUCTIONS

IMPORTANT !!

READ THIS MANUAL IN ITS ENTIRETY. BE FAMILIAR WITH PART NAMES AND HAVE A GOOD UNDERSTANDING OF HOW THIS UNIT IS TO BE ASSEMBLED AND OF HOW INDIVIDUAL PARTS OPERATE, BEFORE ASSEMBLING THE UNIT.

STEP ONE: VERIFY PARTS:

REFER TO FIGURE 1:

UNPACK AND VERIFY THAT ALL PARTS ARE PRESENT. SEE FIGURE 1 FOR PARTS BREAKDOWN OF SPEEDLANES FOR SYSTEM IA, LMF-12, TP-16 & TP-18. IF ANYTHING IS MISSING OR DAMAGED, CONTACT MOHAWK RESOURCES PARTS DEPARTMENT @ 1-800-833-2006.

STEP TWO: INSTALL ARM LOCK PLATES:

REFER TO FIGURE 2:

REMOVE TOP SWING ARM PIN NUTS FROM ALL CARRIAGE PINS (TYPICAL 4 PLACES). PLACE ARM LOCK WELDMENTS OVER TOPS OF BOTH CARRIAGES AND USE NEW LOWER PROFILE NYLON NUTS ON TOP OF SWING ARM PINS.

STEP THREE: ASSEMBLE PADS ON ARMS:

REFER TO FIGURE 3, 5 & 6:

POSITION ARMS AT ANGLES TO ALLOW KEYS TO DROP INTO TOP OF ARM LOCK PLATES AND AROUND SWING ARMS.

IF NOT ALREADY ASSEMBLED ON THE SPEEDLANE PADS, SCREW ADAPTOR PINS ONTO THREADS OF UNDERSIDE OF PADS. USE 1 1/8 DIA PINS FOR USE WITH A SYSTEM IA; USE 1 3/8 DIA PINS FOR USE WITH A LMF-12, TP-16 OR TP-18.

REMOVE LIFTING PADS FROM SLIDER ENDS. PLACE SPEEDLANE PADS OVER ARMS ENSURING PINS GO INTO SLIDER END HOLES. IF USING THESE PADS ON A SYSTEM IA, ADD 1/2 INCH THICK SLEEVES OVER ADAPTOR PINS. SECURE PINS IN ARM HOLES WITH HAIRPIN COTTERS.

REPEAT FOR BOTH SIDES OF LIFT.

ASSEMBLY IS NOW COMPLETE. REFER TO PROPER USAGE INSTRUCTIONS.

STEP FOUR: APPLY DECALS:

REFER TO FIGURE 1,2 & 3:

VERIFY THAT PADS HAVE CAPACITY DECALS ON THEM AND BE AWARE OF PROPER USAGE OF THESE SPEEDLANE PADS. APPLY DECALS PROVIDED TO THE CENTER FRONT OF BOTH CARRIAGES ON LIFT.

SAFETY TIPS FOR SPEEDLANE

PLEASE POST THESE **AUTOMOTIVE LIFT SAFETY TIPS FOR SPEEDLANE**, (A COPY IS INCLUDED IN THE PARTS BOX) WHERE THEY WILL BE CONSTANTLY REMINDED TO YOUR LIFT OPERATOR. FOR INFORMATION SPECIFIC TO THE LIFT, ALWAYS REFER TO THE MOHAWK MANUAL.

- | | |
|--|---|
| <ul style="list-style-type: none"> • INSPECT YOUR LIFT DAILY. NEVER OPERATE IT IF IT MALFUNCTIONS OR IF IT HAS BROKEN OR DAMAGED PARTS. REPAIRS SHOULD BE MADE WITH ORIGINAL MOHAWK PARTS. • OPERATING CONTROLS ARE DESIGNED TO CLOSE WHEN RELEASED. DO NOT BLOCK OPEN OR OVERRIDE THEM. • NEVER OVERLOAD YOUR LIFT BEYOND STATED LIFTING CAPACITY. RATED CAPACITY IS SHOWN ON NAMEPLATE AFFIXED TO THE LIFT. OBSERVE LIFTING CAPACITY OF SPEEDLANE PADS. • ONLY TRAINED AND AUTHORIZED PERSONNEL SHOULD DO POSITIONING OF VEHICLE AND OPERATION OF THE LIFT. • DO NOT ALLOW CUSTOMERS OR BY- STANDERS TO OPERATE THE LIFT OR TO BE IN A LIFTING AREA DURING ITS OPERATION. ONLY PROPERLY TRAINED PERSONNEL SHOULD BE ALLOWED TO OPERATE LIFT. • NEVER RAISE A VEHICLE WITH PERSONS INSIDE. • ALWAYS KEEP LIFT AND LIFT AREA FREE OF OBSTRUCTIONS, DEBRIS, GREASE, AND OIL. • PERFORM THE PRE-OPERATION CHECK LIST, PER INSTRUCTIONS, BEFORE RAISING VEHICLE TO DESIRED HEIGHT. • BEFORE DRIVING VEHICLE INTO THE BAY OVER SPEEDLANE, ENSURE PROPER UNDERVEHICLE CLEARANCE FOR DRIVING OVER PADS. • LOAD VEHICLE ON LIFT CAREFULLY. POSITION LIFT PADS TO CONTACT AT THE VEHICLE | <p>MANUFACTURER’S RECOMMENDED LIFTING POINTS. RAISE LIFT UNTIL PADS CONTACT VEHICLE. CHECK PADS FOR SECURE CONTACT WITH VEHICLE. RAISE LIFT TO DESIRED WORKING HEIGHT. CAUTION: IF YOU ARE WORKING UNDER VEHICLE, LIFT SHOULD BE RAISED HIGH ENOUGH FOR LOCKING DEVICE TO BE ENGAGED.</p> <ul style="list-style-type: none"> • NOTE THAT WITH SOME VEHICLES, THE REMOVAL OR INSTALLATION OF COMPONENTS MAY CAUSE A CRITICAL SHIFT IN THE CENTER OF GRAVITY, AND RESULT IN RAISED VEHICLE INSTABILITY. REFER TO THE VEHICLE MANUFACTURER’S SERVICE MANUAL FOR RECOMMENDED PROCEDURES WHEN VEHICLE COMPONENTS ARE REMOVED. • BEFORE LOWERING LIFT, BE SURE TOOL TRAY’S, STANDS, ETC. ARE REMOVED FROM UNDER VEHICLE. RELEASE LOCKING DEVICES BEFORE ATTEMPTING TO LOWER LIFT. • BEFORE REMOVING VEHICLE FROM THE LIFT AREA, REMOVE RUBBER LIFTING PADS (IF USED) TO PROVIDE AN UNOBSTRUCTED EXIT. • THESE SPEEDLANE PADS WERE DESIGNED TO LIFT A MAJORITY OF VEHICLES, HOWEVER, THEY WILL NOT ACCOMMODATE ALL OF THEM. IF PROPER PLACEMENT OF THE VEHICLE OVER THE PADS DOES NOT ALLOW FOR PLACEMENT OF RUBBER PADS AT THE PROPER LIFT POINTS OF THE VEHICLE, THE SPEEDLANE PADS ARE NOT TO BE USED. |
|--|---|

PRE - OPERATION CHECK LIST

TRAINED OPERATOR

- THE OPERATOR MUST BE FULLY TRAINED AND QUALIFIED TO SAFELY AND EFFECTIVELY OPERATE THIS EQUIPMENT OF THIS SPECIFIC MAKE AND MODEL.

ABSENCE OF OBSTRUCTIONS

- THE TOTAL WORK AREA MUST BE FREE OF ANY AND ALL OBSTRUCTIONS AND BE GENERALLY CLEAN. (FREE OF OIL AND DEBRIS)

VISUAL INSPECTION

- THOROUGHLY INSPECT THE UNIT WITH A TRAINED EYE, NOTING ANY PROBLEM AREAS. INSPECT THE FLOOR AND THE ANCHORING FASTENERS AS WELL. REPORT ANY QUESTIONABLE ITEMS.

NO LOAD PERFORMANCE CHECK

- ALL MECHANICAL SAFETIES OPERATE PROPERLY AND CONSISTENTLY.
- NO EXTERNAL FLUID LEAKS.
- NO BLEED DOWN.
- EFFORTLESS AND SIMULTANEOUS MOVEMENT.
- LEVEL LIFTING.
- CONTROLS FUNCTION PROPERLY.
- ALL SAFETY MECHANISMS FULLY FUNCTIONAL.

PREVIOUS DAY' S OPERATION REPORT

- VERIFY WITH SUPERVISOR THAT THERE WAS NO PROBLEMS EXPERIENCED THE PREVIOUS DAY. IF THERE WERE ANY PROBLEMS, VERIFY THAT ALL NECESSARY REPAIRS HAVE BEEN COMPLETED.

PROPER USAGE INSTRUCTIONS

PRE-OPERATION CHECK

- PERFORM PRE-OPERATION CHECK LIST ITEM BY ITEM.

INSTALL SPEEDLANE PADS ON LIFT

- IF NOT ALREADY ASSEMBLED ON LIFT, PLACE SPEEDLANE PAD ON ARMS. REFER TO INSTALLATION INSTRUCTIONS.

-- WARNING --

FAILURE TO PLACE ARMS PROPERLY ON ARMS MAY CAUSE SERIOUS INJURY TO PERSONNEL AND DAMAGE TO EQUIPMENT.

FAILURE TO PLACE ARM LOCK KEYS AROUND SWING ARMS MAY CAUSE ARMS TO ROTATE DURING USE AND MAY CAUSE SERIOUS INJURY TO PERSONNEL AND DAMAGE TO EQUIPMENT

POSITION VEHICLE

- LOWER LIFT COMPLETELY, ENSURING THAT SPEEDLANE PADS ARE IN CONTACT WITH FLOOR AND SECURE ON LIFT ARMS.
- VISUALLY INSPECT VEHICLE FOR LOW POINTS AND ANY OTHER LOW CLEARANCE OBSTRUCTIONS THAT MAY BE PROBLEMATIC WITH DRIVING THE VEHICLE OVER THE SPEEDLANE PADS.
- DRIVE THE VEHICLE OVER THE SPEEDLANE PADS UNTIL THE CENTER OF GRAVITY (COG) OF THE VEHICLE IS CENTERED LENGTHWISE AND WIDTHWISE ON THE PLATFORMS. PLACE RUBBER PADS UNDER LIFT POINTS OF VEHICLE. **REFER TO ALI/LP-GUIDE FOR PROPER VEHICLE LIFT POINTS.**

-- WARNING --

THESE SPEEDLANE PADS WERE DESIGNED TO LIFT A MAJORITY OF VEHICLES, HOWEVER, THEY WILL NOT ACCOMMODATE ALL OF THEM. IF PROPER PLACEMENT OF THE VEHICLE OVER THE PADS DOES NOT ALLOW FOR PLACEMENT OF RUBBER PADS AT THE PROPER LIFT POINTS OF THE VEHICLE, THE SPEEDLANE PADS ARE NOT TO BE USED.

FAILURE TO PLACE THE VEHICLE'S CENTER OF GRAVITY OVER THE LIFT'S PLATFORM CENTERLINE MAY CAUSE SERIOUS INJURY TO PERSONNEL AND DAMAGE TO EQUIPMENT.

DO NOT DOUBLE STACK RUBBER LIFTING PADS. ENSURE THAT SURFACES OF PLATFORMS AND PADS ARE CLEAN AND FREE OF OIL OR FLUIDS THAT WOULD MAKE THEM SLIPPERY. FAILURE TO OBSERVE THESE CONDITIONS MAY CAUSE SERIOUS INJURY TO PERSONNEL AND DAMAGE TO EQUIPMENT.

- VISUALLY INSPECT UNDERSIDE OF VEHICLE FOR ANY OBSTRUCTIONS (BRAKE LINES, GAS TANKS, ETC.. THAT MAY BECOME DAMAGED WHEN PADS ARE RAISED.

RAISE VEHICLE

- ENGAGE THE UP-BUTTON ON THE LIFT UNTIL PADS CONTACT LIFTING POINTS. VERIFY SOLID AND SECURE CONTACT. ENSURE THAT OTHER UNDERSIDE OBSTRUCTIONS OF THE VEHICLE ARE FREE AND CLEAR OF CONTACT WITH PLATFORMS.
- RAISE VEHICLE TO THE DESIRED WORKING HEIGHT.
- LOWER THE UNIT ONTO THE MECHANICAL SAFETIES.

LOWER VEHICLE

- INSPECT THE LIFTING AREA TO INSURE THAT ALL PERSONNEL AND DEBRIS HAVE BEEN CLEARED FROM THE LIFTING AREA.
- RAISE LIFT OFF OF LOCKS, RELEASE MECHANICAL LOCKS AND ENGAGE THE DOWN-BUTTON.
- LOWER UNIT TO THE DESIRED WORKING HEIGHT.
- IF WORK IS COMPLETE, CONTINUE LOWERING THE UNIT UNTIL BOTH PLATFORMS ARE FULLY LOWERED.

MAINTENANCE PROCEDURES (SPEEDLANE PADS ONLY)

QUALIFIED MAINTENANCE PERSONNEL ONLY

NOTE:

THESE PROCEDURES ARE TO BE USED IN CONJUNCTION WITH NORMAL MAINTENANCE PROCEDURES FOR THE LIFT ITSELF AND ARE INTENDED TO SUPPLEMENT, NOT REPLACE NORMAL LIFT INSPECTIONS.

DAILY

- PERFORM THE PRE-OPERATION CHECK LIST.
- REPORT ANY AND ALL EQUIPMENT MALFUNCTIONS IMMEDIATELY.
- CLEAN ALL MOVING PARTS. IF OXIDIZATION IS OCCURRING USE A LIGHT LUBRICANT. (WD - 40 OR EQUIVALENT)
- KEEP THIS EQUIPMENT AND AREA AROUND THIS EQUIPMENT FREE OF DIRT, OIL, GREASE, FLUIDS, SALT, SAND, WATER, ETC. ENSURE THAT WATER DRAINS AROUND LIFT ARE NOT CLOGGED.
- ENSURE FLIP RAMS ROTATE FREELY AND HAVE SMOOTH OPERATION. USE LIGHT LUBRICANT (WD-40 OR EQUIVALENT) AS NEEDED.(DO NOT USE GREASE)

MONTHLY

- QUALIFY / RE-QUALIFY ALL PERSONNEL IN THE SAFE OPERATION OF THIS UNIT WITH THIS ACCESSORY.
- TIGHTEN ALL FASTENERS AS REQUIRED.
- INSPECT ALL LOAD PINS FOR UNUSUAL OR EXCESSIVE WEAR OR DEFECTS. (REPLACE IF NEEDED, CONTACT MOHAWK PARTS DEPARTMENT)

MOHAWK

SPEEDLANE

FIGURES & DIAGRAMS

MOHAWK LIFTS, LLC.

65 VROOMAN AVE.
AMSTERDAM, NY 12010
TOLL FREE: 1-800-833-2006

LOCAL: 1-518-842-1431

FAX: 1-518-842-1289

INTERNET: WWW.MOHAWKLIFTS.COM

E-MAIL: SERVICE@MOHAWKLIFTS.COM

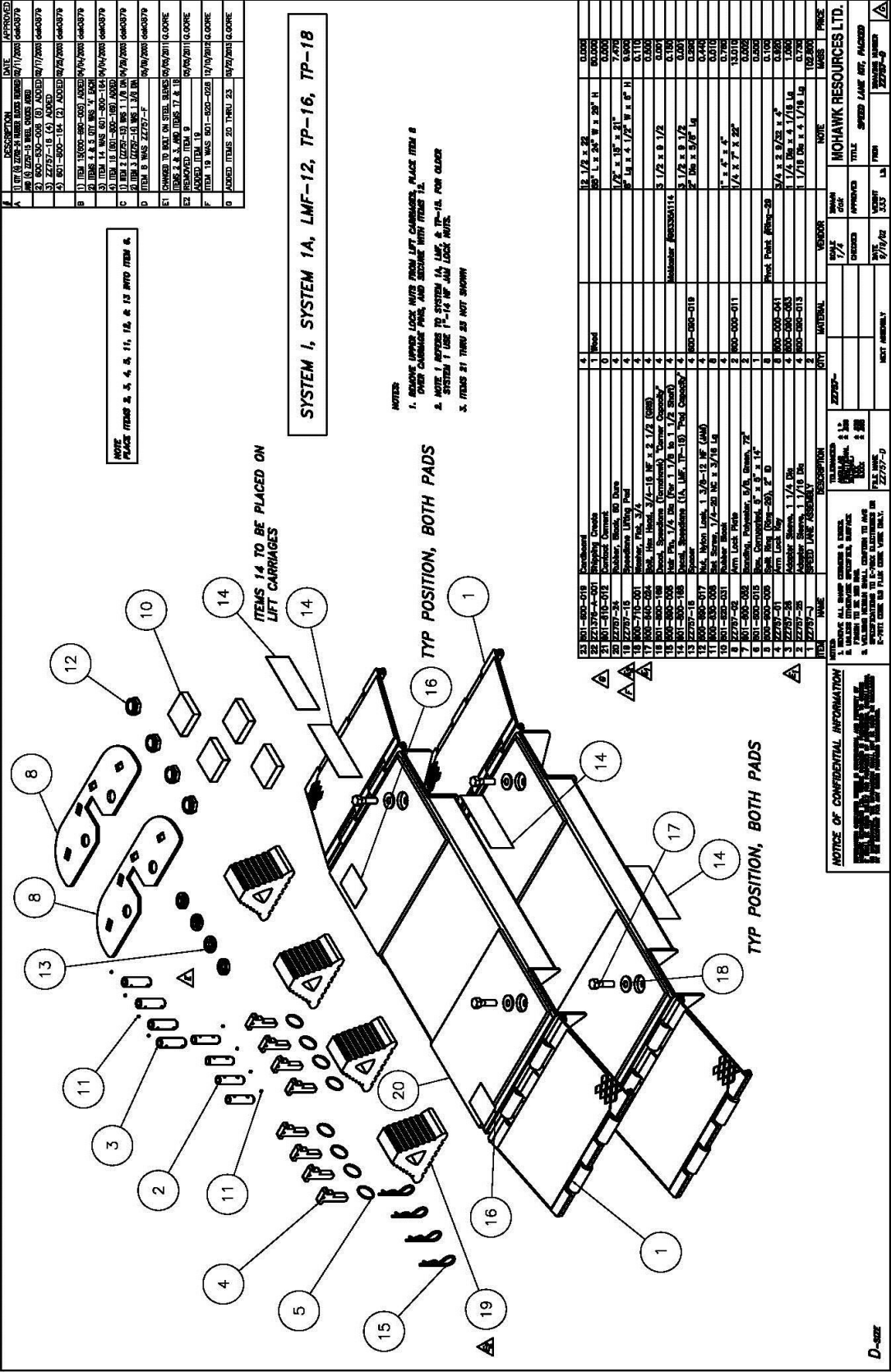


Figure 1

ARM LOCK PLATE ASSEMBLY:

(System IA, LMF, TP-16, and
TP-18)

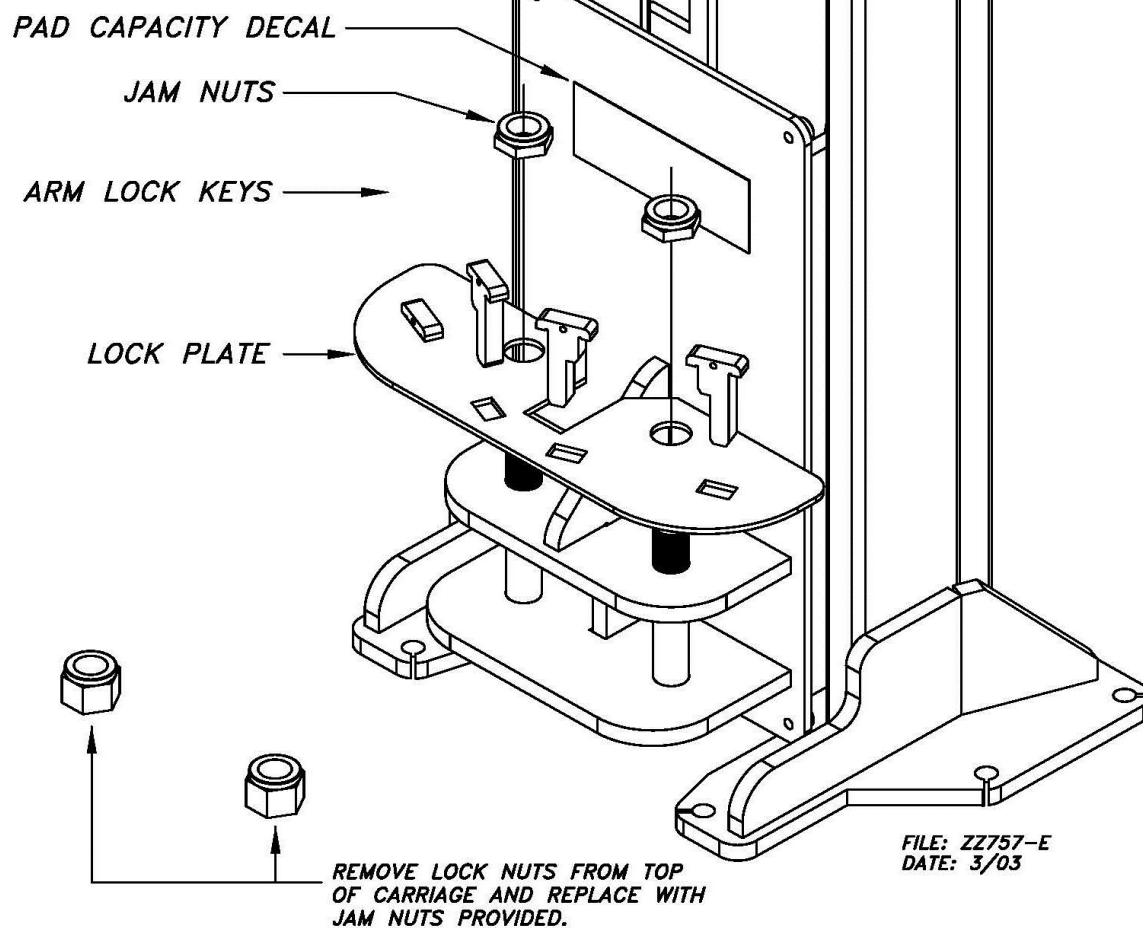


Figure 2

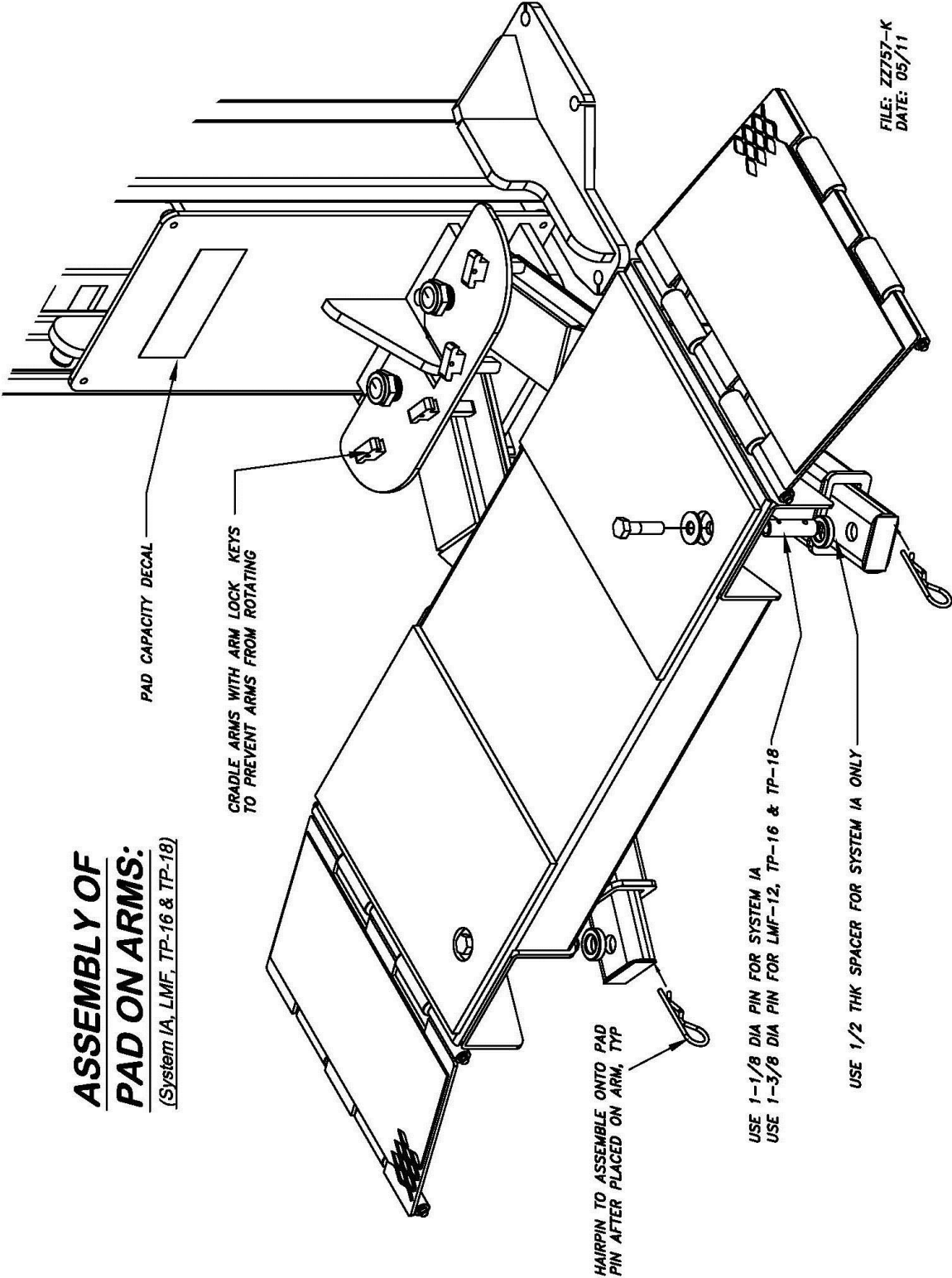
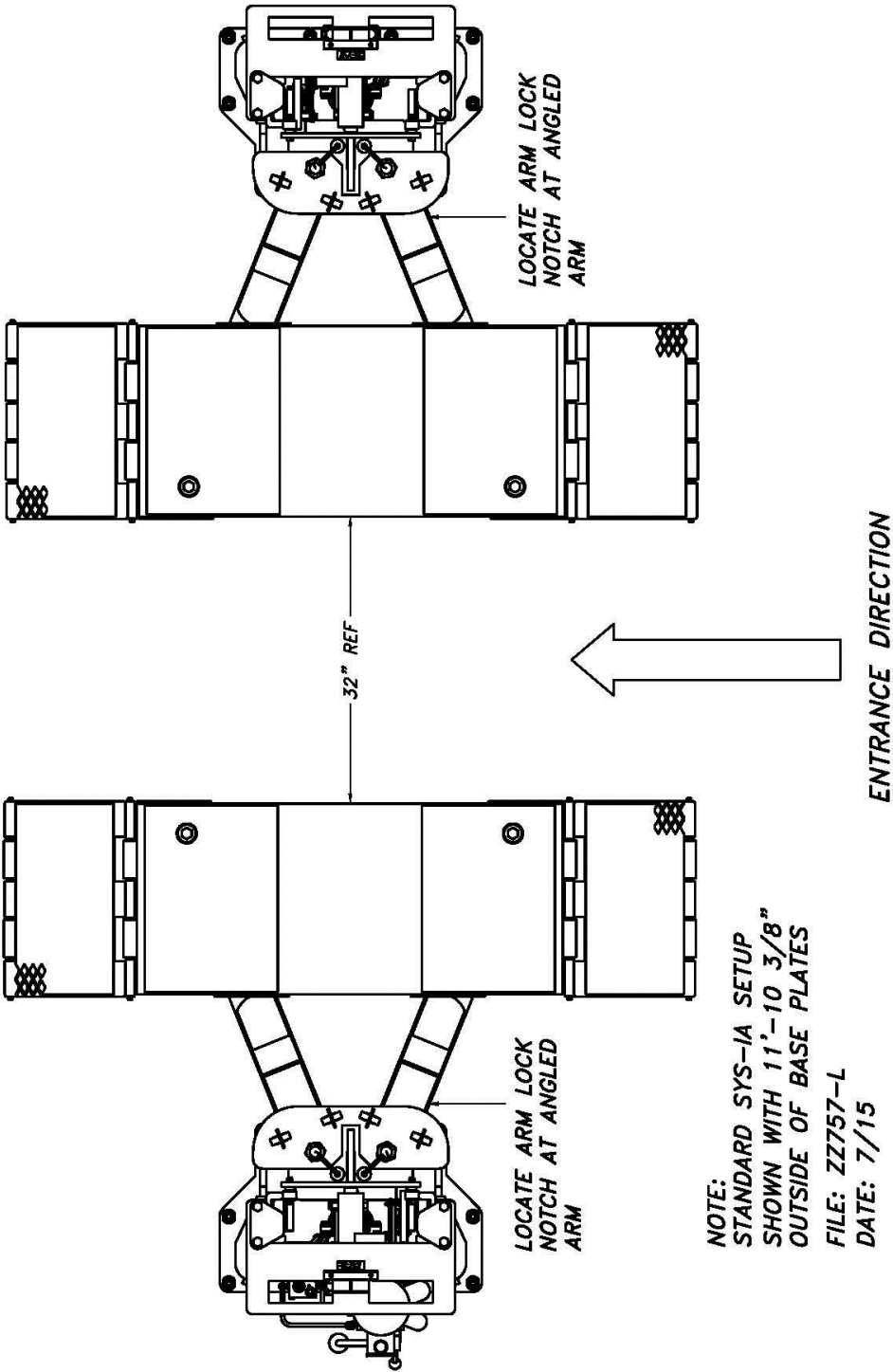


Figure 3

ASSEMBLY OF PAD ON ARMS:

(System IA, LMF, TP-16 & TP-18)



NOTE:
STANDARD SYS-IA SETUP
SHOWN WITH 11'-10 3/8"
OUTSIDE OF BASE PLATES
FILE: ZZ757-L
DATE: 7/15

Figure 4
13

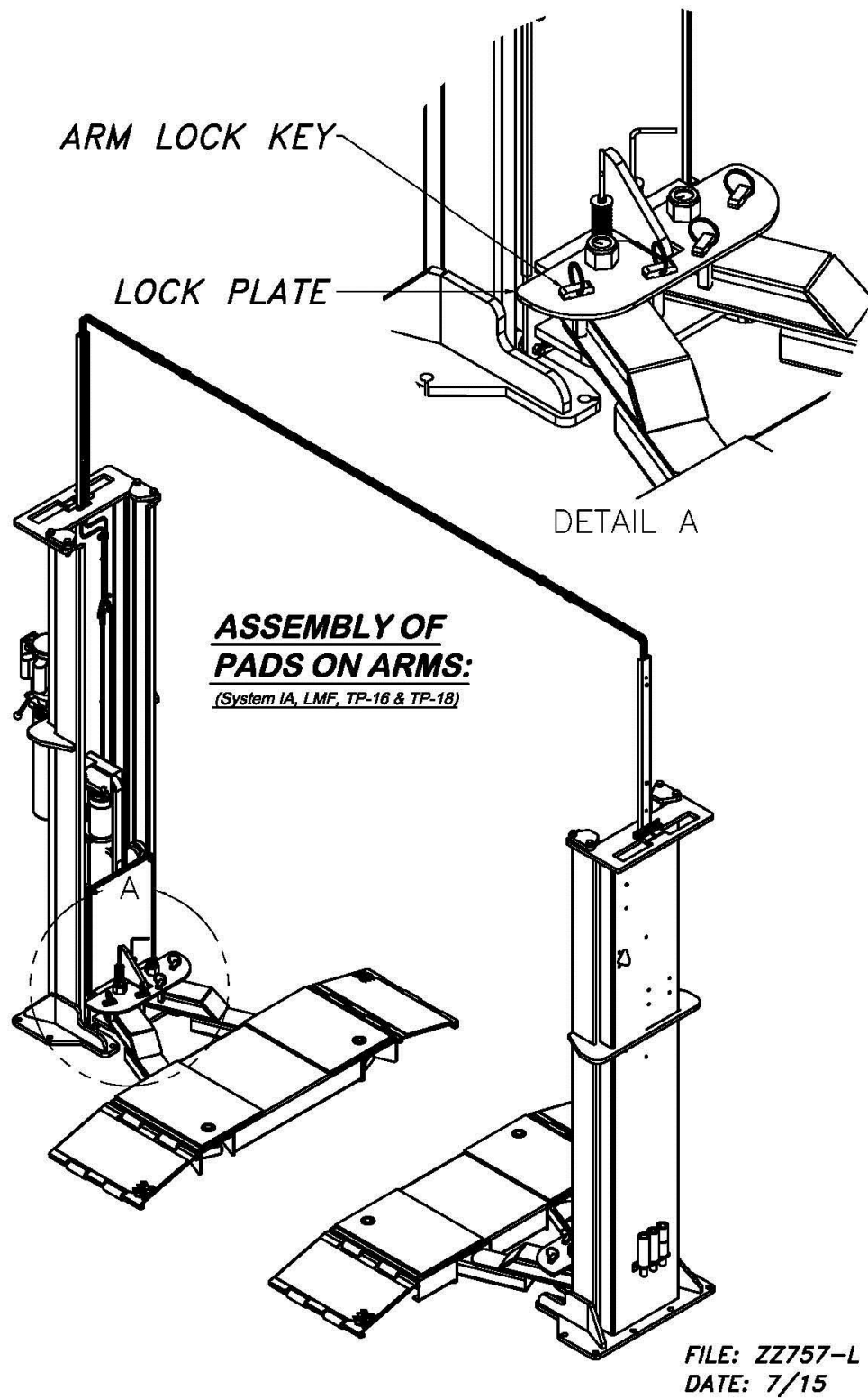




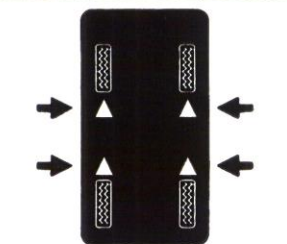



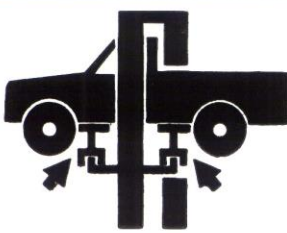
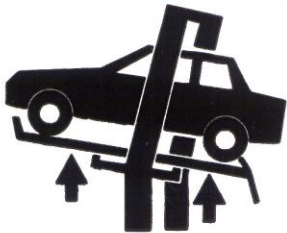

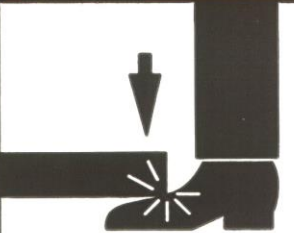


Figure 5
14

<p>⚠ CAUTION</p>  <p>Lift to be used by trained operator only.</p> <p>©</p>	<p>⚠ CAUTION</p>  <p>Authorized personnel only in lift area.</p> <p>©</p>	<p>⚠ WARNING</p>  <p>Clear area if vehicle is in danger of falling.</p> <p>©</p>	<p>⚠ WARNING</p>  <p>Position vehicle with center of gravity midway between adapters.</p> <p>©</p>
<p>⚠ CAUTION</p>  <p>Use vehicle manufacturer's lift points.</p> <p>©</p>	<p>⚠ CAUTION</p>  <p>Always use safety stands when removing or installing heavy components.</p> <p>©</p>	<p>⚠ WARNING</p>  <p>Remain clear of lift when raising or lowering vehicle.</p> <p>©</p>	<p>⚠ WARNING</p>  <p>Avoid excessive rocking of vehicle while on lift.</p> <p>©</p>
<p>⚠ CAUTION</p>  <p>Use height extenders when necessary to ensure good contact.</p> <p>©</p>	<p>⚠ CAUTION</p>  <p>Auxiliary adapters may reduce load capacity.</p> <p>©</p>	<p>⚠ WARNING</p>  <p>Do not override self-closing lift controls.</p> <p>©</p>	<p>⚠ WARNING</p>  <p>Keep feet clear of lift while lowering.</p> <p>©</p>

The messages and pictographs shown are generic in nature and are meant to generally represent hazards common to all automotive lifts regardless of specific style.

Funding for the development and validation of these labels was provided by the Automotive Lift Institute, PO Box 33116 Indialantic, FL. 32903.

They are protected by copyright. Set of labels may be obtained from ALI or its member companies.

©1992 by ALI, Inc. ALI/WL101c

The messages and pictographs shown are generic in nature and are meant to generally represent hazards common to all automotive lifts regardless of specific style.

Funding for the development and validation of these labels was provided by the Automotive Lift Institute, PO Box 33116 Indialantic, FL. 32903.

They are protected by copyright. Set of labels may be obtained from ALI or its member companies.

©1992 by ALI, Inc. ALI/WL101w

<p>SAFETY INSTRUCTIONS</p>  <p>Read operating and safety manuals before using lift.</p> <p>©</p>	<p>SAFETY INSTRUCTIONS</p>  <p>Proper maintenance and inspection is necessary for safe operation.</p> <p>©</p>
<p>SAFETY INSTRUCTIONS</p>  <p>Do not operate a damaged lift.</p> <p>©</p>	<p>The messages and pictographs shown are generic in nature and are meant to generally represent hazards common to all automotive lifts regardless of specific style</p> <p>Funding for the development and validation of these labels was provided by the Automotive Lift Institute, PO Box 33116 Indialantic, FL 32903</p> <p>They are protected by copyright Set of labels may be obtained from ALI or its member companies</p> <p>© 1992 by ALI, Inc. ALI/WL101s</p>

MOHAWK LIFT PRODUCTS

The Lifts You Can't Wear Out



TWO POST

Model System IA-10



Model TP-20



FOUR POST

Model TR-75



MOBILE COLUMN

Model MP-18-007



PARALLELOGRAM

Model 75-32-F



VERTICAL RISE

Model V-77-30S

MOHAWK LIFTS

Mohawk Lifts, LLC.

P.O. Box 110 • 65 Vrooman Ave

Amsterdam, NY 12010

Phone: (800) 833-2006 • (518) 842-1431

www.mohawklifts.com