

MOHAWK

MADE IN THE USA



TD-Series Tire Dollies

TD-1000 – 1000 LB CAPACITY MANUALLY RAISED

TD-1000-AH – 1000 LB CAPACITY AIR/HYDRAULIC RAISED



- ☒ OPERATION
- ☒ MAINTENANCE
- ☒ PARTS



MOHAWK RESOURCES LTD.

65 VROOMAN AVE., PO BOX 110
AMSTERDAM, NY 12010

TOLL FREE: 1-800-833-2006

LOCAL: 1-518-842-1431

FAX: 1-518-842-1289

INTERNET: www.MOHAWKLIFTS.com

E-MAIL: service@MOHAWKLIFTS.com

Tire Dollies 3-2008.doc

Rev Date 3/27/2008

Part #601-800-0XX

**READ MANUAL
THOROUGHLY BEFORE
INSTALLING,
OPERATING OR SERVICING
THIS LIFT !!**

**Deliver these instructions to lift
owner/user/employer along with
other instructional materials
furnished with this lift.**

HAVE A QUESTION?

**Call your local
Mohawk distributor
For parts, service and technical support.**

Distributor Place Card Here

Please have this unit's model and serial number when calling for service.

Model Number

Serial Number

OR CONTACT:

MOHAWK RESOURCES LTD.

65 Vrooman Ave.

P.O. Box 110

Amsterdam, NY 12010

Toll Free: 1-800-833-2006

Local: 1-518-842-1431

Fax: 1-518-842-1289

Internet: www.MOHAWKLIFTS.com

E-Mail: Service@MOHAWKLIFTS.com

SAFETY WARNINGS FOR TIRE DOLLIES:

WARNING: DO NOT LOAD THIS WHEEL DOLLY BEYOND ITS RATED CAPACITY. OVERLOADING CAN CAUSE DAMAGE TO OR FAILURE OF THE PRODUCT. APPLY LOAD AS CLOSE TO THE VERTICAL PORTION OF THE LIFTING MEMBER AS POSSIBLE. BEFORE MOVING THE LOAD, LOWER THE LIFTING ARMS AND ASSURE THAT THE LOAD IS CENTERED AND SECURED WITH A LOAD RESTRAINT DEVICE.

THIS WHEEL DOLLY IS DESIGNED FOR USE ONLY ON HARD LEVEL SURFACES CAPABLE OF SUSTAINING THE LOAD. USE ON OTHER THAN HARD LEVEL SURFACES CAN CAUSE INSTABILITY AND POSSIBLE LOSS OF LOAD.

FAILURE TO HEED THESE WARNINGS MAY RESULT IN LOSS OF LOAD, DAMAGE TO THE WHEEL DOLLY, AND/OR FAILURE RESULTING IN PERSONAL INJURY OR PROPERTY DAMAGE.

NO ALTERATIONS TO THE WHEEL DOLLY SHALL BE MADE.

STUDY, UNDERSTAND, AND FOLLOW ALL INSTRUCTIONS.

MOHAWK

TD-1000

INSTRUCTIONS & DIAGRAMS



MOHAWK RESOURCES LTD.

MOHAWK TD-1000

1/2 TON CAPACITY HIGH LIFT WHEEL DOLLY SETUP • OPERATING • MAINTENANCE INSTRUCTIONS

IMPORTANT: READ THESE INSTRUCTIONS BEFORE OPERATING

BEFORE USING THIS WHEEL DOLLY, READ THIS MANUAL AND THE ADDITIONAL INSTRUCTION MANUAL ON THE WINCH (MODEL 82302 ONLY) COMPLETELY AND THOROUGHLY, UNDERSTAND THEIR OPERATING PROCEDURES, SAFETY WARNINGS AND MAINTENANCE REQUIREMENTS. FAILURE TO DO SO COULD CAUSE ACCIDENTS RESULTING IN SERIOUS OR FATAL PERSONAL INJURY AND/OR PROPERTY DAMAGE.

The use of wheel dollies is subject to certain hazards that cannot be prevented by mechanical means, but only by the exercise of intelligence, care, and common sense. It is therefore essential to have owners and personnel involved in the use and operation of equipment who are careful, competent, trained, and qualified in the safe operation of the equipment and its proper use.

Examples of hazards are dropping, tipping, or slipping of loads caused primarily by improperly securing loads, overloading, off-

centered loads, use on other than a hard level surface, and using equipment for a purpose for which it was not designed.

It is the responsibility of the owner to make sure all personnel read these manuals prior to using this device. It is also the responsibility of the device owner to keep these manuals intact and in a convenient location for all to see and read. If the manuals are lost or not legible, contact Mohawk for free replacements. If the operator is not fluent in English, the product and safety instructions shall be read to and discussed with the operator in the operator's native language by the purchaser/owner or his designee, making sure that the operator comprehends its contents.

WARRANTY

These wheel dollies are covered by a Limited Lifetime Warranty.

WARNING

- Inspect the wheel dolly before each use. Do not use the wheel dolly if it is damaged, altered, modified, in poor condition, leaking hydraulic fluid, or has loose or missing hardware or components. Take corrective action before using the wheel dolly.
- Do not exceed rated capacity. Use only on a hard level surface.
- Stay out from underneath a load that is being lifted or suspended.
- Apply load as close to the vertical portion of the lifting member as possible.
- Before moving the load, assure that the load is centered and secured with the load restraint device provided.
- Before moving, lower the load to the lowest possible point.
- No alterations or modifications shall be made to this product.

SETUP

1. Insert the large diameter end of the jack handle into the pump handle receiver and secure the handle to the receiver with the washer and bolt provided.

2. Sometimes air gets trapped in the hydraulic bottle jacks causing the jack ram to extend in sporadic increments instead of one smooth extension.

PURGING AIR FROM THE MANUAL PUMP SYSTEM

- a. Open the release valve by turning the release valve knob in a counterclockwise direction two full turns.
- b. Pump the handle ten full strokes.
- c. Close the release valve by turning the release valve knob in a clockwise direction until tight.
- d. Pump the jack until the ram is extended to maximum height.

If the condition seems better but is still detectable, repeat steps "a" through "d" until air is purged from the system.

OPERATING INSTRUCTIONS

1. Hydraulic bottle jacks are used on every model wheel dolly. Become familiar with the operation of the bottle jack. The jack's release valve knob must be turned in a clockwise direction until tight before the jack can be pumped. Turning the release valve knob very slowly in a counterclockwise direction lowers the load in a safe controlled manner. There should never be a reason to turn the release valve knob in a counterclockwise direction more than two full turns.

2. Read the winch operations manual that accompanied this wheel dolly for instructions on the proper use and care of the winch.

3. The bottle jack on this model assists to match the spindle angle.

4. After the vehicle is raised and correctly blocked, push the wheel dolly in towards the tire/wheel combination to be lifted. The wheel dolly lift arms should straddle the tire and the side

wall of the tire should be as close as possible to the vertical portion of the lift member. Raise the lift arms to meet the tire/s and adjust the lift arm angles so the arms are in full contact with the tire/s.

5. Secure the tire/wheel combination to the dolly with the safety restraint chain provided. Wrap the chain around the tire and secure the chain hook or chain loop to the dolly.

6. Continue to lift the tire/wheel combination until the entire weight is supported by the dolly lift arms. Back the dolly away to remove the tire/wheel combination.

7. If the wheel bearings need packing, lower the tire/wheel combination to the floor, remove the safety chain and then remove the dolly.

8. After packing the wheel bearings, install the wheel dolly and safety restraint chain around the tire and raise the tire/wheel combination to the required height. Adjust the lift arm tilt to match the spindle angle and install the assembly. Make sure the tire/wheel combination is securely positioned on the wheel spindle and then back the dolly away.

PREVENTATIVE MAINTENANCE

1. Always store the wheel dolly in a well protected area where it will not be exposed to inclement weather, corrosive vapors, abrasive dust, or any other harmful elements. The wheel dolly must be cleaned of water, snow, sand, or grit before using.

2. Lubricate moving parts once a month with a general purpose grease, particularly the rear caster/s adjustment thread.

3. It should not be necessary to refill or top off the reservoir with hydraulic fluid unless there is an external leak. An external leak requires immediate repair which must be performed in a dirt-free environment by qualified hydraulic repair personnel who are familiar with this equipment. Mohawk Authorized Service Centers are recommended. **IMPORTANT: In order to prevent seal damage and hydraulic failure, never use alcohol, hydraulic brake fluid, or transmission oil in the hydraulic system.**

4. Every wheel dolly owner is responsible for keeping the dolly label clean and readable. Use a mild soap solution to wash external surfaces of the dolly but not any moving hydraulic components.

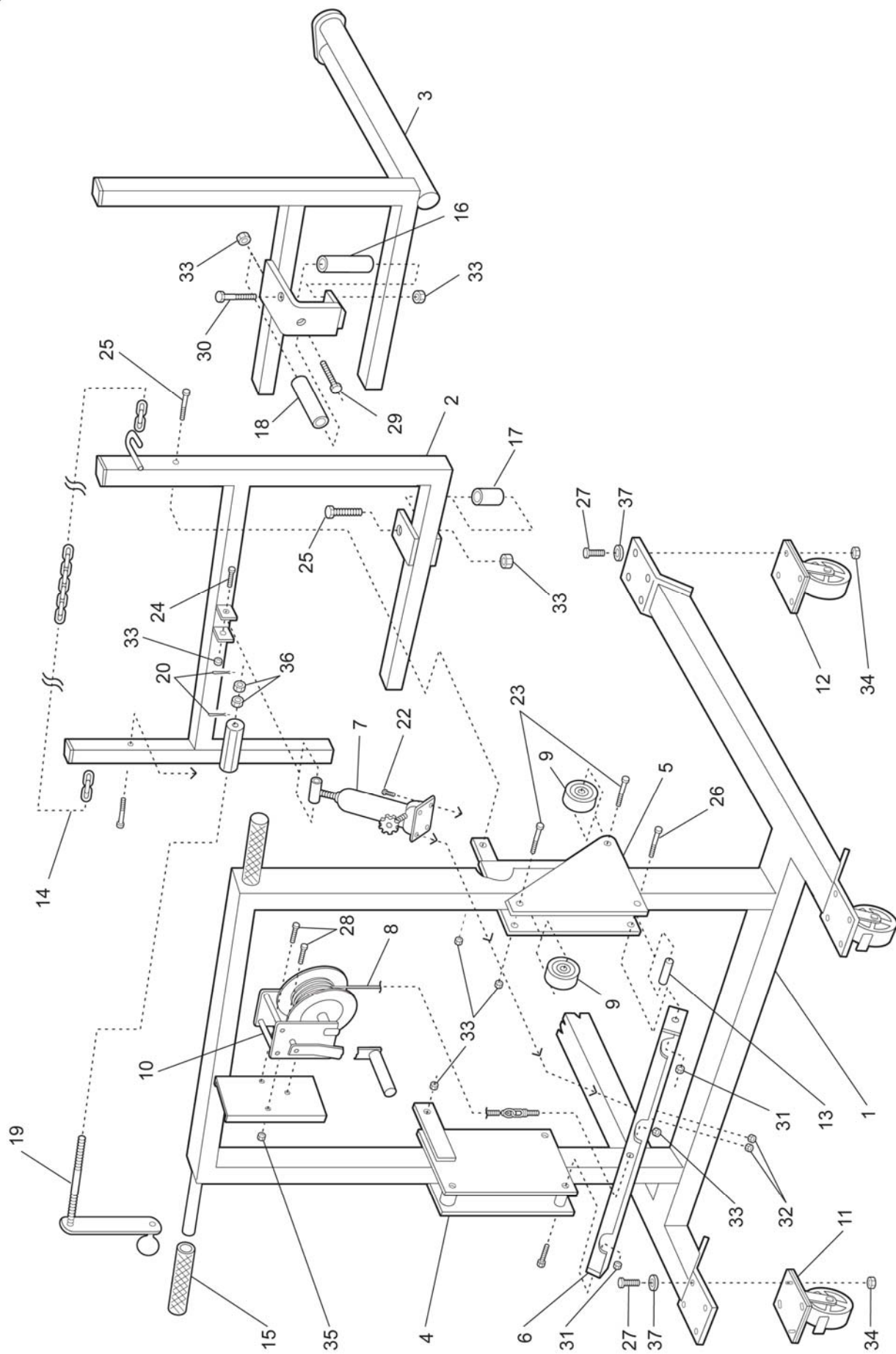
5. Inspect the wheel dolly before each use. Do not use the dolly if any component is cracked, broken, bent, shows sign of damage, or leaks hydraulic fluid. Do not use the dolly if it has loose or missing hardware or components, or is modified in any way. Take corrective action before using the dolly again.

6. Do not attempt to make any hydraulic repairs unless you are a qualified hydraulic repair person that is familiar with this equipment.

REPAIR SERVICE

If your product requires service or repair, contact the Mohawk for the location of the nearest Mohawk Authorized Service Center.

It will be necessary to provide the Mohawk Authorized Service Center with a copy of the bill of sale if requesting warranty repair. If the authorized service center determines your product is eligible for warranty repair, the repair will be made at no charge and returned freight prepaid. The cost of non-warrantable service, repair, and return freight is the customer's responsibility.



DESCRIPTION
HIGH LIFT WHEEL DOLLY

CAPACITY
1/2 TON

REPLACEMENT PARTS

INDEX NO.	DESCRIPTION	PART NO.	REQ'D NO
1	Upright Base Assembly	430220	1
2	Cradle Support Assembly	430225	1
3	Cradle Assembly	430230	1
4	Lift Assembly, Right Side	430155	1
5	Lift Assembly, Left Side	430160	1
6	Jack Mounting Assembly	430165	1
7	Jack Assembly	430170	1
8	Cable/Eye Bolt Assembly	430175	1
9	Spacer, Lift Assembly	430172	4
10	Winch	430035	1
11	Caster, Swivel/Lock	492015	2
12	Caster, Fixed	492020	2
13	Spacer	430173	2
14	Chain	430011	1
15	Grip, Hand	479248	2
16	Long Guide Roller	430231	2
17	Short Guide Roller	430232	2
18	Roller, Medium	430233	2
19	Crank Handle Assembly	430235	1
20	1/8" x 1 1/4" Cotter Pin	7059	2
21			
22	1/4" - 20 x 1 1/4" Allen Socket Cap Bolt	11184	2
23	1/2" - 13 x 3 1/4" Bolt, Hex	11186	4
24	1/2" - 13 x 2 1/2" Bolt, Hex	11148	1
25	1/2" - 13 x 3" Bolt, Hex	11048	4
26	1/2" - 13 x 3 1/2" Bolt, Hex	11046	2
27	7/16" - 14 x 1" Bolt, Hex	11151	16
28	3/8" - 16 x 1" Bolt, Hex	11007	3
29	1/2" - 13 x 7" Bolt, Hex	11101	2
30	1/2" - 13 x 4 3/4" Bolt, Hex	11187	2
31	1/2" - 13 Nyloc Nut	1056	2
32	1/4" - 20 Nyloc Nut	1053	2
33	1/2" - 13 Nyloc Jam Nut	1074	12
34	7/16" - 14 Nyloc Nut	1089	16
35	3/8" - 16 Nyloc Nut	1054	3
36	5/8" - 18 Castle Nut - Zinc	1099	2
37	7/16" Flat Washer	2073	16

MOHAWK

TD-1000-AH

INSTRUCTIONS & DIAGRAMS



MOHAWK RESOURCES LTD.

MOHAWK TD-1000-AH

1/2 TON CAPACITY AIR/HYD. HIGH LIFT WHEEL DOLLY SETUP • OPERATING • MAINTENANCE INSTRUCTIONS



This is the safety alert symbol. It is used to alert you to potential personal injury hazards. Obey all safety messages that follow this symbol to avoid possible injury or death.



WARNING indicates a hazardous situation which, if not avoided, could result in death or serious injury.



IMPORTANT: READ THESE INSTRUCTIONS BEFORE OPERATING

BEFORE USING THIS DEVICE, READ THIS MANUAL COMPLETELY AND THOROUGHLY, UNDERSTAND ITS OPERATING PROCEDURES, SAFETY WARNINGS AND MAINTENANCE REQUIREMENTS.

It is the responsibility of the owner to make sure all personnel read this manual prior to using the device. It is also the responsibility of the device owner to keep this manual intact and in a convenient location for all to see and read. If the manual is lost or not legible, contact Mohawk for a free replacement. If the operator is not fluent in English, the product and safety instructions shall be read to and discussed with the operator in the operator's native language by the purchaser/owner or his designee, making sure that the operator comprehends its contents.

THE NATURE OF HAZARDOUS SITUATIONS



The use of portable automotive lifting devices is subject to certain hazards that cannot be prevented by mechanical means, but only by the exercise of intelligence, care, and common sense. It is therefore essential to have owners and personnel involved in the use and operation of equipment who are careful, competent, trained, and qualified in the safe operation of the equipment and its proper use. Examples of hazards are dropping, tipping or slipping of loads caused primarily by improperly securing loads, overloading, off-centered loads, use on other than hard level surfaces, and using equipment for a purpose for which it was not designed.

METHODS TO AVOID HAZARDOUS SITUATIONS



- Inspect the wheel dolly before each use. Do not use the wheel dolly if it is damaged, altered, modified or in poor condition, leaking hydraulic fluid, or has loose or missing hardware or components. Take corrective action before using the wheel dolly.
- Do not exceed rated capacity. Use only on a hard level surface.
- Stay out from underneath a load that is being lifted or suspended.
- Apply load as close to the vertical portion of the lifting member as possible.
- Before moving the load, assure that the load is centered and secured with the load restraint provided.
- Before moving, lower the load to the lowest possible point.
- No alterations or modifications shall be made to this product.

CONSEQUENCES OF NOT AVOIDING HAZARDOUS SITUATIONS



Failure to read this manual completely and thoroughly, understand its OPERATING INSTRUCTIONS, SAFETY WARNINGS, MAINTENANCE INSTRUCTIONS and not comply with them, and neglecting the METHODS TO AVOID HAZARDOUS SITUATIONS could cause accidents resulting in serious or fatal personal injury and/or property damage.

SETUP

1. Insert the large diameter end of the jack handle into the pump handle receiver and secure the handle to the receiver with the washer and bolt provided.
2. Sometimes air gets trapped in the hydraulic bottle jacks causing the jack ram to extend in sporadic increments instead of one smooth extension.

PURGING AIR FROM THE MANUAL PUMP SYSTEM

- a. Open the release valve by turning the release valve knob in a counterclockwise direction two full turns.
- b. Pump the handle ten full strokes.
- c. Close the release valve by turning the release valve knob in a clockwise direction until tight.
- d. Pump the jack until the ram is extended to maximum height.
If the condition seems better but is still detectable, repeat steps "a" through "d" until air is purged from the system.

OPERATING INSTRUCTIONS



This is the safety alert symbol used for the OPERATING INSTRUCTIONS section of this manual to alert you to potential personal injury hazards. Obey all instructions to avoid possible injury or death.

1. Hydraulic bottle jacks are used on every model wheel dolly. Become familiar with the operation of the bottle jack. The jack's release valve knob must be turned in a clockwise direction until tight before the jack can be pumped. Turning the release valve knob very slowly in a counterclockwise direction lowers the load in a safe controlled manner. There should never be a reason to turn the release valve knob in a counterclockwise direction more than two full turns. The bottle jack tilts the lift arms in order to match the angle of the spindle.
2. **IMPORTANT:** Become familiar with the pedal operation of the air/hydraulic foot pump before using the wheel dolly under load. Depressing the foot pedal end marked "Pump" raises the lift arms. To raise the arms a small distance it is necessary to use incremental taps of your foot on the foot pedal until the arms reach the desired height. Lowering the arms is accomplished by depressing the foot pedal end marked "Release". The pump is equipped with a two speed release mechanism. Gently depressing the foot pedal end marked "Release" lowers the arms slower than if you depress the pedal all the way down. If you want to lower the load slower than the slow speed release, use gentle incremental taps of your foot on the "Release" pedal.
3. After the vehicle is raised and correctly blocked, push the wheel dolly in towards the tire/wheel combination to be lifted. The wheel dolly lift arms should straddle the tire and the side wall of the tire should be as close as possible to the vertical portion of the lift member. Raise the lift arms to meet the tire/s and adjust the lift arm angles so the arms are in full contact with tire/s. If the lift arms are not exactly centered on the tire/wheel, rotating the side shift knob clockwise will adjust the lift arms right and counterclockwise will shift them left.
4. Secure the tire/wheel combination to the dolly with the safety restraint chain provided. Wrap the chain around the tire and secure the chain hook or chain loop to the dolly.
5. Continue to lift the tire/wheel combination until the entire weight is supported by the dolly lift arms. Back the dolly away to remove the tire/wheel combination.
6. Slowly lower the load to the ground or desired work height. Never raise, lower or transport a load without the safety restraint chain securing the load.

PREVENTATIVE MAINTENANCE



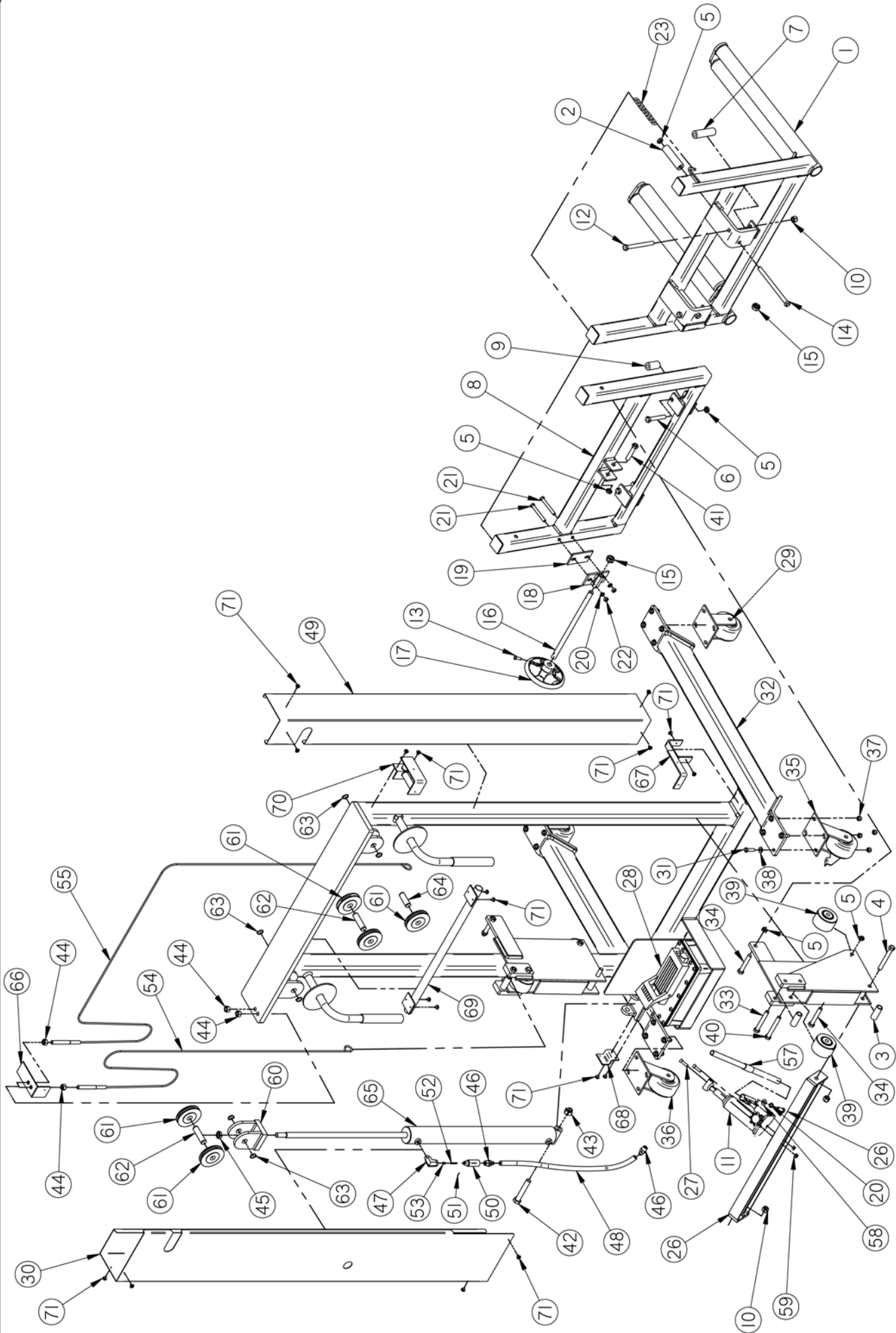
This is the safety alert symbol used for the PREVENTATIVE MAINTENANCE section of this manual to alert you to potential personal injury hazards. Obey all instructions to avoid possible injury or death.

1. Always store the wheel dolly in a well protected area where it will not be exposed to inclement weather, corrosive vapors, abrasive dust, or any other harmful elements. The wheel dolly must be cleaned of water, snow, sand, or grit before using.
2. Lubricate moving parts once a month with a general purpose grease.
3. It should not be necessary to refill or top off the reservoir with hydraulic fluid unless there is an external leak. An external leak requires immediate repair which must be performed in a dirt-free environment by qualified hydraulic repair personnel who are familiar with this equipment. Mohawk Authorized Service Centers are recommended. **IMPORTANT: In order to prevent seal damage and hydraulic failure, never use alcohol, hydraulic brake fluid, or transmission oil in the hydraulic system.**
4. Every wheel dolly owner is responsible for keeping the dolly label clean and readable. Use a mild soap solution to wash external surfaces of the dolly but not any moving hydraulic components. Contact Norco Industries for a replacement label if your dolly label is unreadable.
5. Inspect the wheel dolly before each use. Do not use the dolly if any component is cracked, broken, bent, shows signs of damage, or leaks hydraulic fluid. Do not use the dolly if it has loose or missing hardware or components, or is modified in any way. Take corrective action before using the dolly again.
6. Do not attempt to make any hydraulic repairs unless you are a qualified hydraulic repair person that is familiar with this equipment.

REPAIR SERVICE

If your product requires service or repair, contact the Mohawk for the location of the nearest Mohawk Authorized Service Center.

It will be necessary to provide the Mohawk Authorized Service Center with a copy of the bill of sale if requesting warranty repair. If the authorized service center determines your product is eligible for warranty repair, the repair will be made at no charge and returned freight prepaid. The cost of non-warrantable service, repair, and return freight is the customer's responsibility.



DESCRIPTION
HIGH LIFT WHEEL DOLLY

CAPACITY
1/2 TON

REPLACEMENT PARTS

INDEX NO.	DESCRIPTION	PART NO.	REQ'D NO.
1	CRADLE ASSEMBLY	430230	1
2	LONG GUIDE ROLLER	430231	2
3	CABLE SPACER	430173	4
4	1/2"-13 x 4.00" LONG HEX HEAD BOLT, GRADE 5	11238	2
5	1/2"-13 SHORT NYLOCK NUT	479210	9
6	1/2"-13 x 3.00" LONG HEX HEAD BOLT	11048	2
7	MEDIUM GUIDE ROLLER	430233	2
8	GRADE SUPPORT ASSEMBLY	430225	1
9	SHORT GUIDE ROLLER	430232	2
10	1/2"-13 NYLOCK NUT	1056	4
11	2 TON CAPACITY BOTTLE JACK	430170	1
12	1/2"-13 UNC x 5.00" LONG HEX HEAD BOLT		2
13	5/16"-18 UNC x 3/4" LONG HEX HEAD BOLT		1
14	1/2"-13 UNC x 7.00" LONG HEX HEAD BOLT	11101	2
15	5/8"-11 SLOTTED NUT	1098	2
16	5/8"-11 UNC THREADED ROD		1
17	HANDLE		1
18	THREADED ADJUSTMENT BRACKET	430302	1
19	SPACER PLATE	430301	1
20	3/8" SPLIT LOCK WASHER	2007	3
21	3/8-16 x 2.00" LONG HEX HEAD BOLT		2
22	3/8"-16 UNC NUT	282852	2
23	CHAIN	430011	1
24	RH LIFT ASSEMBLY	430239	1
25	LH LIFT ASSEMBLY	430265	1
26	JACK MOUNTING ASSEMBLY	430285	1
27	5/16"-18 x UNC x 1.00" LONG INTERNAL WRENCHING BOLT	282834	2
28	AIR / HYDRAULIC FOOT PUMP	910130	1
29	STATIC WHEEL ASSEMBLY	492020	2
30	RIGHT HAND SIDE COVER		1
31	3/8"-16 x 1 1/4" LONG HEX HEAD BOLT		16
32	UPRIGHT BASE ASSEMBLY	430305	1
33	1/2"-13 x 3 1/2" LONG HEX HEAD BOLT, GRADE 8		2
34	1/2"-13 x 3.00" LONG HEX HEAD BOLT, GRADE 8		4
35	SWIVEL CASTOR WITH LOCK	492015	1
36	SWIVEL CASTOR	430083	1

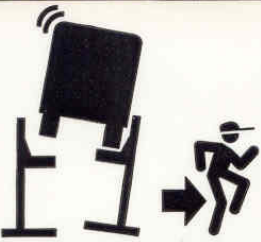
INDEX NO.	DESCRIPTION	PART NO.	REQ'D NO.
37	3/8"-16 NYLOCK NUT	1054	16
38	FLAT WASHER (.82" O.D. X .40" I.D. X .08" THICK)	2073	16
39	BEARING WHEEL	430172	4
40	1/2"-13 x 3 3/4" LONG HEX HEAD BOLT, GRADE 5		2
41	1/2"-13 x 2 1/2" LONG HEX HEAD BOLT, GRADE 8		1
42	5/8"-11 x 3 3/4" LONG HEX HEAD BOLT, GR. 5	11171	1
43	5/8"-11 NYLOCK NUT	1098	1
44	1/2"-13 UNC NUT	1013	4
45	5/8"-11 UNC NUT	1077	1
46	37 DEGREE FLARE FITTING	430307	2
47	STREET ELBOW 3/8" NPTF	430306	1
48	HYDRAULIC HOSE ASSEMBLY	430315	1
49	LEFT HAND SIDE COVER		1
50	VELOCITY FUSE BODY	284121	1
51	PIN (1/16" O.D. x 1/2" LONG)	7063	1
52	VELOCITY FUSE SPRING	793366	1
53	VELOCITY FUSE VALVE	430339	1
54	SHORT CABLE ASSEMBLY	430290	1
55	LONG CABLE ASSEMBLY	430325	1
56	3/8"-16 x 1.00" LONG HEX HEAD BOLT	282868	1
57	HANDLE ASSEMBLY	430310	1
58	FLAT WASHER (.82" O.D. x .40" I.D. x .05" THICK)		1
59	5/16"-18 UNC NYLOCK NUT		2
60	PULLEY CLEVIS	430303	1
61	PULLEY	430304	5
62	LONG PULLEY PIN	430329	2
63	.69 I.D. RETAINING CLIP	12027	6
64	SHORT PULLEY PIN	430327	1
65	RAM ASSEMBLY	430295	1
66	RAM SIDE UPPER COVER MOUNTING BRACKET		1
67	LOWER COVER MOUNTING BRACKET		1
68	RAM SIDE LOWER COVER MOUNTING PLATE		1
69	WIRE GUARD ASSEMBLY		1
70	UPPER COVER MOUNTING BRACKET		1
71	SHEET METAL SCREW		18

REPLACEMENT
PARTS

CAPACITY
1/2 TON

DESCRIPTION
HIGH LIFT WHEEL DOLLY

⚠ WARNING



Clear area if vehicle is in danger of falling.

©

⚠ WARNING



Remain clear of lift when raising or lowering vehicle.

©

⚠ WARNING



Locate lift on firm, level surface, preferably concrete.

©

⚠ WARNING



Be sure intended lifts are moving together evenly.

©

⚠ WARNING



All lifting forks must properly engage vehicle tires or supports.

©

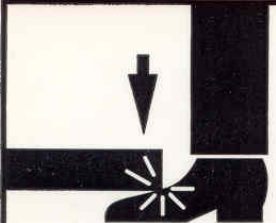
⚠ WARNING



Do not drive over or pinch electrical cables.

©

⚠ WARNING



Keep feet clear of lift while lowering.

©

The messages and pictographs shown are generic in nature and are meant to generally represent hazards common to all automotive lifts regardless of specific style.

Funding for the development and validation of these labels was provided by the Automotive Lift Institute, PO Box 33116 Indialantic, FL 32903.

They are protected by copyright. Set of labels may be obtained from ALI or its member companies.

© 1992 by ALI, Inc.

ALI/WL400w

⚠ CAUTION



Lift to be used by trained operator only.

©

⚠ CAUTION



Authorized personnel only in lift area.

©

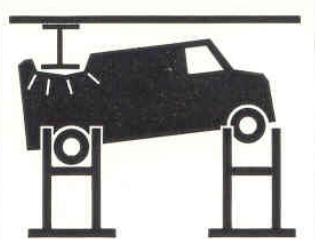
⚠ CAUTION



When moving lift, be careful to avoid tipping.

©

⚠ CAUTION



Check for overhead obstructions before raising vehicle.

©

The messages and pictographs shown are generic in nature and are meant to generally represent hazards common to all automotive lifts regardless of specific style.

Funding for the development and validation of these labels was provided by the Automotive Lift Institute, PO Box 33116 Indialantic, FL 32903.

They are protected by copyright. Set of labels may be obtained from ALI or its member companies.

© 1992 by ALI, Inc.

ALI/WL400c

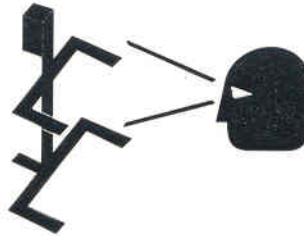
SAFETY INSTRUCTIONS



**Read operating
and safety manuals
before using lift.**

©

SAFETY INSTRUCTIONS



**Proper maintenance
and inspection
is necessary
for safe operation.**

©

SAFETY INSTRUCTIONS



**Do not operate
a damaged lift.**

©

The messages and pictographs shown are generic in nature and are meant to generally represent hazards common to all automotive lifts regardless of specific style.

Funding for the development and validation of these labels was provided by the Automotive Lift Institute, PO Box 33116 Indialantic, FL. 32903.

They are protected by copyright. Set of labels may be obtained from ALI or its member companies.

© 1992 by ALI, Inc.

ALI/WL400a

MOHAWK.

Because Quality Lasts Forever.



Model USL-6000

Full rise, space-saving, no-post, portable scissors lift, offers full under-car access.



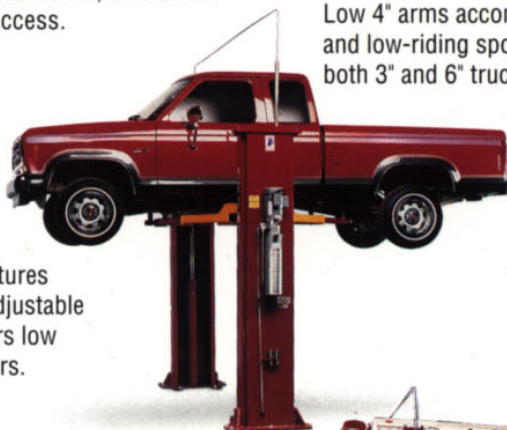
Model A-7

The A-7 is a 7,000 lb. capacity asymmetric lift that allows full opening of all vehicle doors as well as total undercar/underdash access, thanks to Mohawk's unique "clear-floor" design. Low 4" arms accommodate all imports and low-riding sports cars. Includes both 3" and 6" truck adapters.



Model System I

The 9,000 lb. capacity System I, like all Mohawk lifts, features Mohawk's patented hydraulic equalization system with adjustable overhead (or optional underground) hydraulic lines. Offers low 3 1/2" swing arms and comes standard with truck adapters.

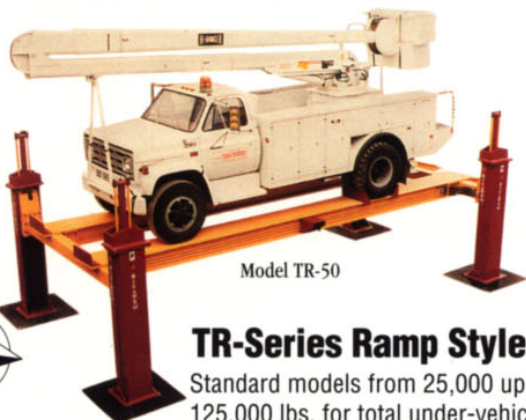


Model LMF-12, TP-15, TP-18, TP-26 & TP-30

These 12,000 to 30,000 lb. capacity models are the ideal heavy-duty lifts for up to Class VI trucks. Mohawk's unique "clear floor" design makes these the perfect lifts for all fleet applications. Truck adapters are standard equipment.



Model LMF-12



Model TR-50

TR-Series Ramp Style Lifts

Standard models from 25,000 up to 125,000 lbs. for total under-vehicle access.

Ramp lengths from 20' to 50'. Completely operated by a single technician, and features fully interlocked, redundant safety systems.



MOHAWK



Mohawk Industrial Park • P.O. Box 110
Amsterdam, NY 12010

1-800-833-2006 or 518-842-1431

FAX 518-842-1289

www.mohawklifts.com

