

MOHAWK

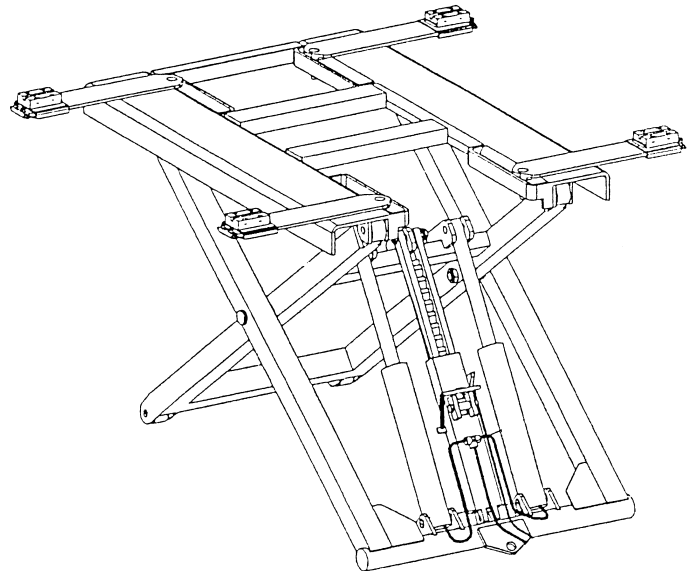
MADE IN THE USA



MODEL HR-6

6,000 LB. MOBILE MIDRISE SCISSOR VEHICLE LIFT MANUAL

Thank you for
Sending in your
Warranty Registration
Card.



MOHAWK RESOURCES LTD.

65 VROOMAN AVE.

AMSTERDAM, NY 12010

TOLL FREE: 1-800-833-2006

LOCAL: 1-518-842-1431

FAX: 1-518-842-1289

INTERNET: www.MohawkLifts.com

EMAIL: Rbagwell@MohawkLifts.com



HR6-Master.doc

Rev Date 4/23/2002

Part #601-800-133

IMPORTANT SAFETY INSTRUCTIONS

When using your garage equipment, basic safety precautions should always be followed, including the following:

1. Read all instructions.
2. Care must be taken as burns can occur from touching hot parts.
3. Do not operate equipment with a damaged cord or if the equipment has been dropped or damaged - until it has been examined by a qualified serviceman.
3. Do not let cord or hoses come in contact with hot manifolds or moving fan blades.
4. If an extension cord is necessary, a cord with a current rating equal to or more than that of the equipment should be used. Cords rated for less current than the equipment may overheat. Care should be taken to arrange the cord so that it will not be tripped over or pulled.
5. Always unplug equipment from electrical outlet when not in use. Never use the cord to pull the plug from the outlet. Grasp plug and pull to disconnect
6. To reduce the risk of fire, do not operate equipment in the vicinity of open containers of flammable liquids (gasoline). **WARNING: Risk of Explosion:** This equipment has internal arcing and sparking parts which should not be exposed to flammable vapors. This equipment is only suitable for installation in a garage having sufficient air circulation to be considered a non-hazardous location.
7. Adequate ventilation should be provided when working on operating internal combustion engines.
8. Keep hair, loose clothing, fingers, and all parts of body away from moving parts.
9. To reduce the risk of electric shock, do not use on wet surfaces or expose to rain.
10. Use only as described in this manual. Use only manufacturer's recommended attachments.
11. **ALWAYS WEAR SAFETY GLASSES.** Everyday eyeglasses only have impact resistant lenses, they are NOT safety glasses.

SAVE THESE INSTRUCTIONS

Rev (1/26/01)

APPENDAGE: Rev (1/26/01)**NOTE:**

All accessories (i.e. Lifting Pads, Height Adapters, etc.) supplied with this lift are to be used on this lift only. Accessories from other lifts are not acceptable and could result in injury to the user.

PROPER SELECTION OF POWER SUPPLY CORD:

Acceptable Cord Types: SO, SEO,STO, SOW, SEOO, SOW-A

Cord Size: 12/3

Cord Ampacity: 25 Amps

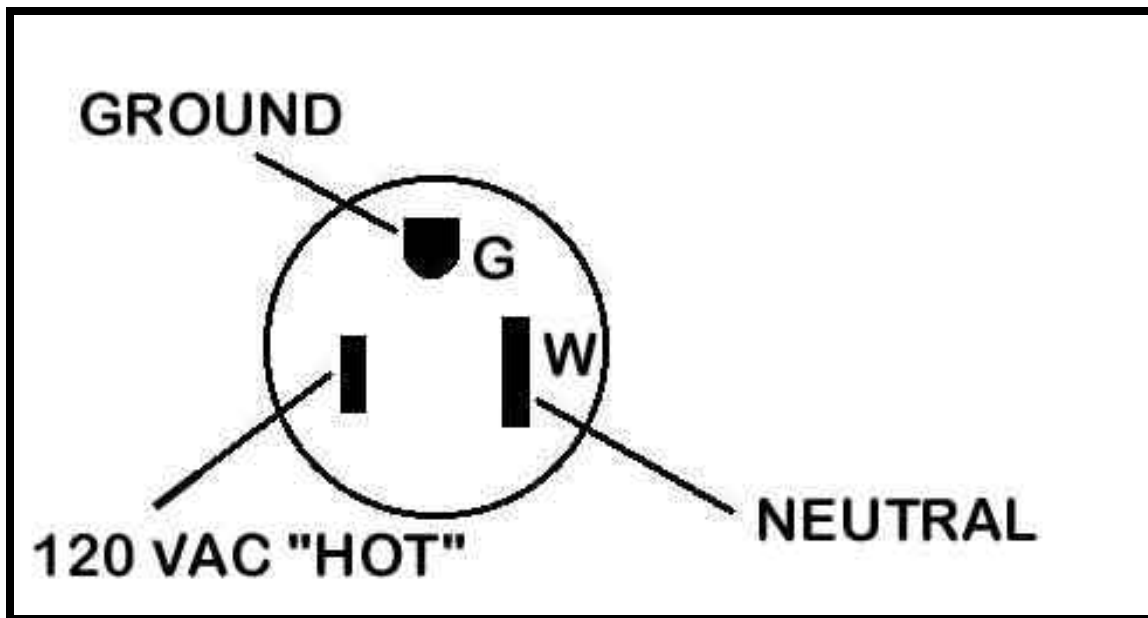
Minimum Recommended Circuit Breaker: 40 Amp

Plug Wiring: Use Female NEMA Plug supplied with lift and wire as follows (See Diagram Below),

G: Ground (Green)

W: Neutral (White) Wide Prong

X: 120 VAC Hot (Black) Narrow Prong

Face of Plug Represented:

FORWARD

Thank you for purchasing our Mobile Platform Lift and integrating it into your working environment. We believe you have made the most intelligent choice.

As a specialist in lift manufacturing, Mohawk Resources Ltd. has dedicated an abundance of research to meeting the practical requirements of mobile maintenance and repair. In general, the lifts provided by our company bear the following features:

- ◆ Safety
- ◆ High Performance
- ◆ Ease of Operation
- ◆ High Quality

This manual includes the important details of proper installation, operation, maintenance, and repair as well as relevant safety instructions. Be sure to read this manual completely and become familiar with this product before operation.

HAVE A QUESTION?

**Call your local
Mohawk distributor
For parts, service and technical support.**

Distributor Place Card Here

Please have this unit's model and serial number when calling for service.

Model Number _____

Serial Number _____

OR CONTACT:

MOHAWK RESOURCES LTD.

65 Vrooman Ave.

P.O. Box 110

Amsterdam, NY 12010

Toll Free: 1-800-833-2006

Local: 1-518-842-1431

Fax: 1-518-842-1289

Internet: www.MOHAWKLIFTS.com

E-Mail: Rbagwell@MOHAWKLIFTS.com

MOHAWK WARRANTIES

EFFECTIVE DATE: 1/1/2002

GENERAL WARRANTY INFORMATION:

MOHAWK'S OBLIGATION UNDER THIS WARRANTY IS LIMITED TO REPAIRING OR REPLACING ANY PART OR PARTS RETURNED TO THIS FACTORY, TRANSPORTATION CHARGES PREPAID, WHICH PROVE UPON INSPECTION TO BE DEFECTIVE AND WHICH HAVE NOT BEEN MISUSED. DAMAGE OR FAILURE TO ANY PART DUE TO FREIGHT DAMAGE OR FAULTY MAINTENANCE IS NOT COVERED UNDER THIS WARRANTY. MOHAWK RESERVES THE RIGHT TO DECLINE RESPONSIBILITY WHEN REPAIRS HAVE BEEN MADE OR ATTEMPTED BY OTHERS. THIS WARRANTY DOES NOT COVER DOWNTIME EXPENSES INCURRED WHEN UNIT IS IN REPAIR. THE MODEL NAME AND SERIAL NUMBER OF THE EQUIPMENT MUST BE FURNISHED WITH ALL WARRANTY CLAIMS. THIS WARRANTY STATEMENT CONTAINS THE ENTIRE AGREEMENT BETWEEN MOHAWK RESOURCES LTD. AND THE PURCHASER UNLESS OTHERWISE SPECIFICALLY EXPRESSED IN WRITING. THIS NON-TRANSFERABLE WARRANTY APPLIES TO THE ORIGINAL PURCHASER ONLY. THIS WARRANTY IS APPLICABLE TO UNITS LOCATED ONLY IN THE UNITED STATES OF AMERICA AND CANADA. CONTACT MOHAWK RESOURCES LTD. FOR SPECIFIC WARRANTY PROVISIONS FOR UNITS LOCATED OUTSIDE OF THESE COUNTRIES.

5-YEAR WARRANTY:

THIS WARRANTY IS APPLICABLE TO THE FOLLOWING MOHAWK LIFTS ONLY: A-7, SYSTEM I, LMF-12, TP-15, TP-18, TP-20, TP-26, TP-30 AND STANDARD OPTIONS.

3-YEAR WARRANTY:

THIS WARRANTY IS APPLICABLE TO THE FOLLOWING MOHAWK LIFTS ONLY: TSL-7, PL-6000, TR-19, TR-25, FL-25, TR-33, TR-35, TR-40, TR-50, TR-60, TR-75, TR-110, MP-SERIES AND RP-SERIES MOBILE COLUMN LIFTS, SL-SERIES SCISSOR LIFTS, FP-SERIES LIGHT DUTY FOUR POST LIFTS, TL-SERIES LIFTS AND STANDARD OPTIONS.

2-YEAR WARRANTY:

THIS WARRANTY IS APPLICABLE TO THE FOLLOWING MOHAWK LIFTS ONLY: USL-6000 AND STANDARD OPTIONS.

1-YEAR WARRANTY:

THIS WARRANTY IS APPLICABLE TO THE FOLLOWING MOHAWK LIFTS ONLY: HR-6, TOMAHAWK, TD-1000, CT-1000 AND STANDARD OPTIONS.

STRUCTURAL COMPONENTS:

ALL STRUCTURAL AND MECHANICAL COMPONENTS OF THIS UNIT ARE GUARANTEED FOR THE ABOVE STATED TIME FRAME, SPECIFIC TO MODEL, FROM THE DATE OF INVOICE, AGAINST DEFECTS IN WORKMANSHIP AND/OR MATERIALS WHEN LIFT IS INSTALLED AND USED ACCORDING TO SPECIFICATIONS.

SEE MOHAWK'S "EXTENDED LIFETIME CYLINDER WARRANTY" FOR SPECIFIC WARRANTY PROVISIONS FOR HYDRAULIC CYLINDERS. THE "EXTENDED LIFETIME CYLINDER WARRANTY" IS APPLICABLE TO THE FOLLOWING MOHAWK LIFTS ONLY: A-7, SYSTEM I, LMF-12, TP-15, TP-18, TP-20, TP-26, TP-30, MP-SERIES AND TL-SERIES LIFTS.

POWER UNIT:

ALL POWER UNIT COMPONENTS (MOTOR, PUMP AND RESERVOIR) ARE GUARANTEED FOR THE ABOVE STATED TIME FRAME, SPECIFIC TO MODEL, FROM THE DATE OF INVOICE, AGAINST DEFECTS IN WORKMANSHIP AND/OR MATERIALS WHEN THE LIFT IS INSTALLED AND USED ACCORDING TO SPECIFICATIONS.

ELECTRICAL COMPONENTS:

ALL ELECTRICAL COMPONENTS (EXCLUDING MOTOR) ARE GUARANTEED FOR ONE YEAR FOR PARTS ONLY (EXCLUDING LABOR), FROM THE DATE OF INVOICE, AGAINST DEFECTS IN WORKMANSHIP AND/OR MATERIALS WHEN THE LIFT IS INSTALLED AND USED ACCORDING TO SPECIFICATIONS.

PNEUMATIC (AIR) COMPONENTS:

ALL PNEUMATIC (AIR) COMPONENTS (I.E. AIR CYLINDERS AND POPPET AIR VALVES) ARE GUARANTEED FOR ONE YEAR FOR PARTS ONLY (EXCLUDING LABOR), FROM THE DATE OF INVOICE, AGAINST DEFECTS IN WORKMANSHIP AND/OR MATERIALS WHEN THE LIFT IS INSTALLED AND USED ACCORDING TO SPECIFICATIONS.

WARRANTY EXCEPTIONS:

ALL "SPECIAL" LIFTS AND/OR "CUSTOMIZED" OPTIONS ON THIS UNIT ARE GUARANTEED FOR ONE YEAR FOR PARTS ONLY (EXCLUDING LABOR), FROM THE DATE OF INVOICE, AGAINST DEFECTS IN WORKMANSHIP AND/OR MATERIALS WHEN THE LIFT IS INSTALLED AND USED ACCORDING TO SPECIFICATIONS.

THIS WARRANTY SUPERSEDES ALL OTHER WARRANTY POLICIES PREVIOUSLY STATED AND IN ALL OTHER MOHAWK PRODUCT SPECIFIC LITERATURE.

CONTENTS**TEXT**

	PAGE
GENERAL WARNINGS	2
LIFT SPECIFICATIONS	3
PACKING LIST	4
BEFORE INSTALLING A LIFT	4
GENERAL OPERATION PROCEDURES	5
INSTALLATION AND OPERATION INSTRUCTIONS	6
GENERAL OPERATION PRECAUTIONS	7
SAFETY TIPS	8
PRE - OPERATION CHECK LIST	9
MAINTENANCE PROCEDURES	9
NOTES	10
TROUBLE SHOOTING	11-12
SERVICE CHART	13
MAINTENANCE CHART	13

FIGURES / PARTS

	FIGURE	PAGE
MAIN SCISSOR MECHANISM	1	15-17
HR-6 FINAL ASSEMBLY	2	18
CYLINDER ASSEMBLY	3	19
POWER UNIT ASSEMBLY	4	20

ALL INFORMATION, ILLUSTRATIONS, AND SPECIFICATIONS IN THIS MANUAL ARE BASED ON THE LATEST PRODUCT INFORMATION AVAILABLE AT THE TIME OF PRINTING. WE RESERVE THE RIGHT TO MAKE CHANGES AT ANY TIME WITHOUT NOTICE.

GENERAL WARNINGS

RECOMMENDATIONS BY THE INDIVIDUAL USER OR USING ORGANIZATION FOR IMPROVING THIS PUBLICATION OR ANY ASPECT OF THE PRODUCT ARE ENCOURAGED AND SHOULD BE FORWARDED IN WRITING TO:

**MOHAWK RESOURCES LTD.
PRODUCT IMPROVEMENTS
65 VROOMAN AVE.
AMSTERDAM, NY, 12010**

THIS IS NOT A VEHICLE LIFTING PROCEDURE MANUAL AND NO ATTEMPT IS MADE OR IMPLIED HEREIN TO INSTRUCT THE USER IN LIFTING METHODS PARTICULARLY TO THE INDIVIDUAL APPLICATION OF THE EQUIPMENT DESCRIBED IN THIS MANUAL. RATHER, THE CONTENTS OF THIS MANUAL ARE INTENDED AS A BASE LINE FOR OPERATION, MAINTENANCE, TROUBLE SHOOTING, AND PARTS LISTING OF THE UNIT AS IT STANDS ALONE AND AS IT IS INTENDED AND ANTICIPATED TO BE USED IN CONJUNCTION WITH OTHER EQUIPMENT.

PROPER APPLICATION OF THE EQUIPMENT DESCRIBED HEREIN IS LIMITED TO THE PARAMETERS DETAILED IN THE SPECIFICATIONS AND THE USES SET FORTH IN THE DESCRIPTIVE PASSAGES. ANY OTHER PROPOSED APPLICATION OF THIS EQUIPMENT SHOULD BE DOCUMENTED AND SUBMITTED IN WRITING TO MOHAWK RESOURCES LTD. FOR EXAMINATION. THE USER ASSUMES FULL RESPONSIBILITY FOR ANY EQUIPMENT DAMAGE, PERSONAL INJURY, OR ALTERATION OF THE EQUIPMENT DESCRIBED IN THIS MANUAL OR ANY SUBSEQUENT DAMAGES.

DO NOT WELD, APPLY HEAT, OR MODIFY THIS EQUIPMENT IN ANY MANNER WITHOUT WRITTEN AUTHORIZATION FROM **MOHAWK RESOURCES LTD.** CERTAIN ALLOY OR HEAT-TREATED COMPONENTS MAY BE DISTORTED OR WEAKENED, RESULTING IN AN UNSAFE CONDITION.

MOHAWK RESOURCES LTD. IS NOT RESPONSIBLE FOR DISTORTIONS, WHICH RESULT FROM WELDING ON THIS EQUIPMENT AFTER MANUFACTURING IS COMPLETED. UNAUTHORIZED WELDING, APPLICATION OF HEAT, OR MODIFICATION OF THIS EQUIPMENT VOIDS ANY AND / OR ALL APPLICABLE WARRANTIES COVERING THIS EQUIPMENT.

ALL WARRANTIES APPLICABLE TO THIS EQUIPMENT ARE CONTINGENT ON STRICT ADHERENCE TO THE MAINTENANCE SCHEDULES AND PROCEDURES IN THIS MANUAL.

KEEP ALL SHIELDS AND GUARDS IN PLACE. INSURE ALL SAFETY MECHANISMS ARE OPERABLE. KEEP HANDS, FEET, AND CLOTHING AWAY FROM POWER-DRIVEN AND MOVING PARTS.

WARNING

- DO NOT INSTALL THIS UNIT IN A PIT OR DEPRESSION DUE TO FIRE OR EXPLOSION RISK

IMPORTANT NOTE

A LEVEL FLOOR IS SUGGESTED FOR A PROPER INSTALLATION SITE AND WILL ENSURE LEVEL LIFTING. SMALL DIFFERENCES IN FLOOR SLOPES MAY BE COMPENSATED FOR WITH SPECIAL LIFTING PADS. ANY MAJOR SLOPE CHANGES WILL AFFECT THE LOW PROFILE HEIGHT OF THE LIFTING PADS AND / OR THE UNITS LEVEL LIFTING PERFORMANCE. IF A FLOOR IS OF QUESTIONABLE SLOPE, CONSIDER A SURVEY OF THE SIGHT AND / OR THE POSSIBILITY OF POURING A NEW LEVEL CONCRETE SLAB SECTION. SIMPLY STATED, FOR OPTIMUM LEVEL LIFTING, THE EQUIPMENT, AT BEST, CAN LIFT ONLY AS LEVEL AS THE FLOOR ON WHICH IT IS LOCATED... AND SHOULD NOT BE EXPECTED TO COMPENSATE FOR DRASTIC FLOOR SLOPE DIFFERENCES.

DO NOT INSTALL THIS UNIT ON A SECOND FLOOR OR ANY GROUND FLOOR WITH A BASEMENT BENEATH WITHOUT WRITTEN AUTHORIZATION FROM THE BUILDING ARCHITECT.

CAUTION

THE EQUIPMENT DESCRIBED IN THIS MANUAL COULD BE POTENTIALLY DANGEROUS IF IMPROPERLY OR CARELESSLY OPERATED. FOR THE PROTECTION OF ALL PERSONS AND EQUIPMENT, ONLY COMPETENTLY TRAINED OPERATORS WHO ARE CRITICALLY AWARE OF THE PROPER OPERATING PROCEDURES, POTENTIAL DANGERS, AND SPECIFIC APPLICATION OF THIS EQUIPMENT SHOULD BE ALLOWED TO TOUCH THE CONTROLS AT ANY TIME.

SAFE OPERATION OF THIS EQUIPMENT IS DEPENDENT ON USE, IN COMPLIANCE WITH THE OPERATION PROCEDURES OUTLINED IN THIS MANUAL ALONG WITH THE MAINTENANCE AND INSPECTION PROCEDURES WITH CONSIDERATION OF PREVAILING CONDITIONS.

THE EQUIPMENT DESCRIBED IN THIS MANUAL IS NEITHER DESIGNED NOR INTENDED FOR ANY APPLICATION ALONE OR IN CONJUNCTION WITH ANY OTHER EQUIPMENT THAT INVOLVES THE LIFTING OR MOVING OF **PERSONS**.

ALWAYS CONSULT THE VEHICLE LIFTING GUIDE FOR THE PROPER LIFTING POINTS ON ANY VEHICLE. THESE GUIDES ARE AVAILABLE FROM THE VEHICLE MANUFACTURERS.

AFTER LIFTING THE VEHICLE TO THE DESIRED HEIGHT, ALWAYS LOWER THE UNIT ONTO THE MECHANICAL SAFETIES. THE FORMING OF GOOD OPERATIONAL WORK HABITS WILL ELIMINATE OVERSIGHTS IN THE USE OF PROVIDED SAFETY DEVICES.

HR-6 SPECIFICATIONS**HR-6 SPECIFICATIONS**

LIFT TYPE / SCISSOR	MOBILE ELECTRIC-HYDRAULIC
GROSS LIFTING CAPACITY	6,000 LBS.
PER ARM CAPACITY	1,500 LBS.
LIFTING SPEED APPROX.	54 SECONDS EMPTY
LIFTING HEIGHT	48 INCHES
NUMBER OF LOCKS	14
LOWERED LIFT HEIGHT	4 7/8 INCHES
LIFTING PAD HEIGHT (MIN)	4 INCHES
LIFTING PAD HEIGHT (MAX)	7 INCHES
SHIPPING WEIGHT	1000 LBS. APPROX

POWER UNIT SPECIFICATIONS

BRAND NAME	MONARCH
MODEL	M-4509-XXXX
POWER UNIT TYPE	VERTICAL
MOTOR VOLTAGE	110
F.L.A. AT RATED CAPACITY	16
MOTOR HORSEPOWER	1
MOTOR PHASE	SINGLE
MOTOR CYCLE / HERTZ	60
MOTOR SPEED (R.P.M.)	3450
PUMP FLOW (G.P.M.)	0.67
RELIEF VALVE SETTING	3000 P.S.I.
WORKING PRESSURE	VARIES W/LOAD
RESERVOIR CAPACITY	2 GALLONS
HYDRAULIC FLUID MEDIUM	DEXRON III

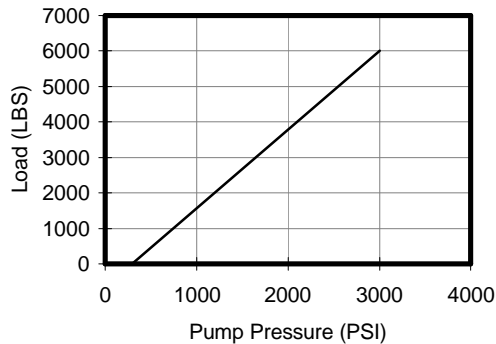
NOTE

THE PLACEMENT OF THE UNIT IS DETERMINED BY THE TYPE (LENGTH, WIDTH, HEIGHT) OF VEHICLE BEING SERVICED.

DO NOT INSTALL ANY MOHAWK LIFT ON ANY SURFACE OTHER THAN CONCRETE THAT IS FLAT AND LEVEL. THIS LIFT CAN ONLY LIFT AS LEVEL AS THE FLOOR THAT IT RESTS UPON.

DO NOT INSTALL ANY MOHAWK LIFT ON EXPANSION SEAMS OR ON CRACKED, OR DEFECTIVE CONCRETE.

DO NOT INSTALL ANY MOHAWK LIFT ON SECONDARY FLOOR LEVELS OR ANY SURFACE WITH A BASEMENT BENEATH WITHOUT WRITTEN AUTHORIZATION FROM THE BUILDING ARCHITECT.

Performance Table

HR-6 PACKING LIST

ORDER NUMBER	PART NUMBER	PART DESCRIPTION	QTY.
	601-960-001	HR-6 SCISSOR LIFT UNIT	1
	601-300-057	POWER UNIT, 1 HP, 2 GALLON	1
	601-800-133	MANUAL (INSTALLATION/OPERATION/MAINTENANCE)	1
	601-9xx-xxx	PARTS BOX, HR-6	1

BEFORE INSTALLING A LIFT**IMPORTANT**

BEFORE INSTALLING A MOHAWK LIFT THERE ARE A FEW ITEMS THAT MUST BE INSPECTED. EACH REPAIR SHOP BAY IS DIFFERENT. IN AN ATTEMPT TO PREVENT OVERSIGHTS, ALL OF THE FOLLOWING INFORMATION IS TO BE VERIFIED.

OVERHEAD OBSTRUCTIONS

THE AREA WHERE THE LIFT WILL BE LOCATED SHALL BE FREE OF OBSTRUCTIONS. HEATERS, BUILDING SUPPORTS, ELECTRICAL CONDUIT; ALL OF THESE ITEMS ARE TO BE TWELVE FEET ABOVE THE BAY FLOOR.

POWER SUPPLY

THE STANDARD POWER UNIT IS 120-VOLT SINGLE PHASE. REFER TO THE POWER UNIT SPECIFICATIONS SECTION. REQUIREMENTS MAY VARY ON SPECIAL ORDERS.

BAY SIZE

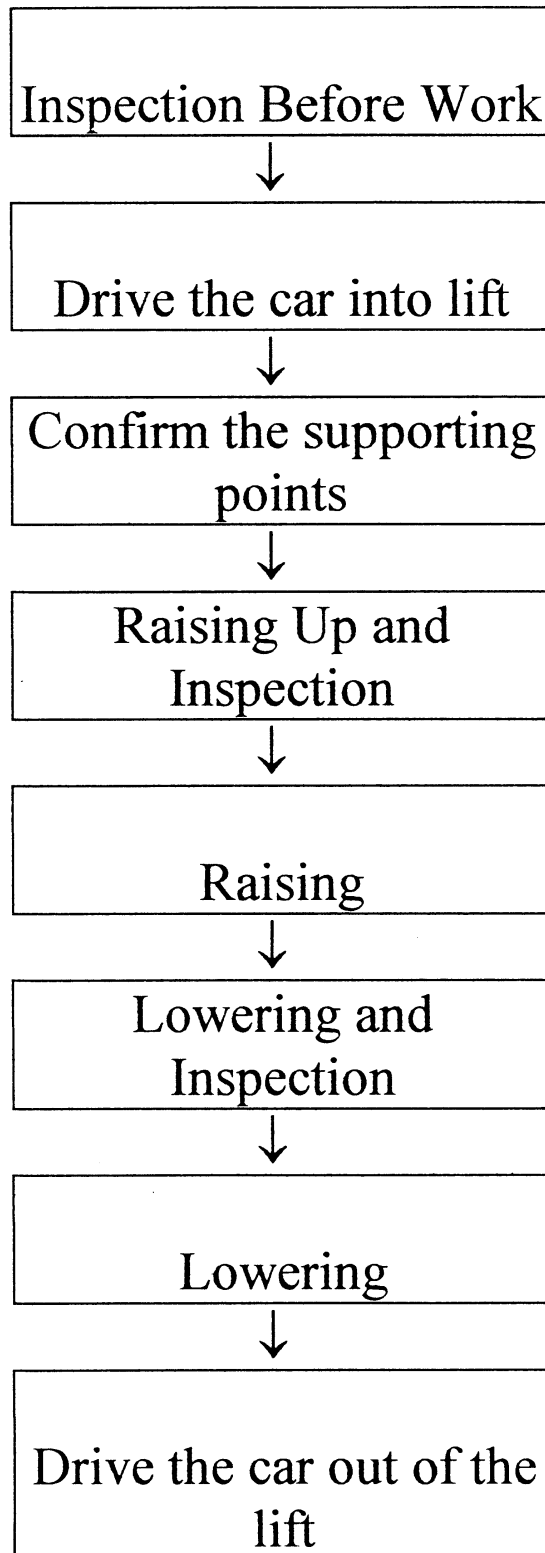
TO OPTIMIZE SHOP SPACE, IT IS ADVISED TO LOCATE A VEHICLE IN THE BAY PRIOR TO LAYOUT. NOTE WALKWAY'S OVERHEAD OBSTRUCTIONS, AND ABILITY TO MOVE EQUIPMENT IN THE BAY AREA.

REQUIREMENTS MAY VARY ON SPECIAL ORDERS.

SPECIFICATIONS

REFERENCE ALL SPECIFICATIONS PRIOR TO INSTALLING A LIFT.

GENERAL OPERATION PROCEDURE



INSTALLATION AND OPERATION INSTRUCTIONS

IMPORTANT

READ THIS MANUAL IN ITS ENTIRETY. BE FAMILIAR WITH PART NAMES AND HAVE A GOOD UNDERSTANDING OF HOW THIS UNIT IS TO BE ASSEMBLED AND OF HOW INDIVIDUAL PARTS OPERATE, BEFORE ASSEMBLING THE UNIT.

POSITIONING THE LIFT:

- ♦ MOVE THE LIFT TO THE PLACE WHERE YOU WISH TO LIFT THE VEHICLE. CHECK TO ENSURE THAT THE GROUND IS FLAT AND RIGID. ENSURE THAT THE AREA IS FREE OF DEBRIS, ACCUMULATION OF WATER AND OTHER UNSAFE SURROUNDINGS. ENSURE THAT THE ADEQUATE CLEARANCE AROUND THE LIFT TO WORK SAFELY.

INSTALL THE ELECTRIC-HYDRAULIC SYSTEM:

- ♦ PLACE THE POWER UNIT IN A SUITABLE AND STABLE POSITION.
- ♦ INSTALL HYDRAULIC FITTING IN THE "P" PORT ON THE POWER UNIT PUMP. CONNECT THE ¼ DIA HOSE BETWEEN THE LIFT AND THE POWER UNIT.
- ♦ INSTALL THE LOCK RELEASE WIRING BETWEEN THE POWER UNIT AND THE MECHANICAL LOCK RELEASE MECHANISM.
- ♦ REMOVE THE BREATHER PORT PLUG ON THE POWER UNITS RESERVOIR AND DISCARD.
- ♦ ADD 2 GALLONS OF HYDRAULIC FLUID TO THE RESERVOIR (DEXRON III RECOMMENDED). VERIFY FLUID LEVEL. (1/2 IN. BELOW BREATHER PORT IN THE POWER UNIT RESERVOIR WHEN BOTH CYLINDERS ARE FULLY RETRACTED) INSTALL THE BREATHER CAP.

CONNECTION OF POWER SUPPLY:

- ♦ CHECK TO ENSURE THE APPROPRIATE POWER SUPPLY IS AVAILABLE. SEE POWER UNIT SPECIFICATIONS.
- ♦ CONNECT 20 AMP DISCONNECTING SERVICE IN FRONT OF INCOMING ELECTRICAL POWER SUPPLY TO LIFT. SIZE CABLE APPROPRIATELY FOR INCOMING AMPERAGE.

INSPECTION AND ADJUSTMENT:

- ♦ TURN ON DISCONNECTING DEVICE AND CHECK IF POWER SUPPLY IS RECEIVING POWER. PUSH "UP" SWITCH TO SEE IF LIFT RAISES.
- ♦ CHECK TO ENSURE THAT THE LIFT CAN BE RAISED SAFELY TO ITS EXTREME POSITION.
- ♦ DURING RISING, CHECK TO ENSURE THE NORMAL FUNCTION OF THE MECHANICAL LOCKS.

TRIAL RUN / LIFT OPERATION:

- ♦ DRIVE CAR ONTO THE LIFT AND CHECK IF THE CAR IS PLACED IN APPROPRIATE POSITION. RELOCATE LIFT OR VEHICLE AS REQUIRED.
- ♦ PLACE THE FOUR LIFTING PADS INTO PLACE IN THE MOUNTING HOLE AT THE END OF EACH LIFTING ARM. LOCATE LIFT PADS AT APPROPRIATE LIFTING POINTS UNDER VEHICLE. REFER TO ALL LIFTING POINTS GUIDE.
- ♦ PUSH "UP" SWITCH TO A POSITION WHERE THE VEHICLE IS JUST LEAVING THE GROUND.
- ♦ INSPECT TO ENSURE NO INTERFERENCE WITH ANY OTHER OBJECTS. CHECK PROPER ENGAGEMENT OF LIFTING PADS ON VEHICLE. ENSURE THAT VEHICLE IS HORIZONTAL ON LIFT.
- ♦ RAISE LIFT TO ITS EXTREME POSITION AND INSPECT. ENSURE THAT THERE ARE NO HYDRAULIC LEAKS. TEST MECHANICAL LOCKS. ENSURE THAT LIFT HOLD VEHICLE IN STEADY POSITION WITHOUT LOWERING.
- ♦ RAISE LIFT SLIGHTLY AND PUSH LOCK RELEASE HANDLE. CHECK THAT LIFT LOWERS SMOOTHLY AND AT A SAFE SPEED. ADJUST FLOW CONTROL VALVES AS NEEDED.
- ♦ REPEAT ABOVE PROCEDURES TO ENSURE THAT LIFT IS OPERATING NORMALLY.

TRAINING:

- ♦ DELIVER OPERATION MANUALS TO OPERATORS. READ MANUALS COMPLETELY. PERFORM ABOVE PROCEDURES ON USAGE OF LIFT TO BECOME FAMILIAR WITH THE FUNCTION OF THIS LIFT.

GENERAL OPERATION PRECAUTIONS:**GENERAL:**

- ◆ THIS LIFT IS DESIGNED TO LIFT AN AUTOMOBILE FOR REPAIR AND MAINTENANCE WORK.
- ◆ DO NOT LOAD VEHICLES HEAVIER THAN THE MAXIMUM RATED CAPACITY OF THIS LIFT.
- ◆ DO NOT LOAD VEHICLES ECCENTRICALLY. DO NOT RAISE ONE SIDE OF VEHICLE ONLY.
- ◆ ALWAYS KEEP THE LIFT PLATFORMS CLEAN AND DO NOT USE THE LIFT IF IT HAS OIL, DIRT OR MUD ON IT.
- ◆ ENSURE PROPER SUPPORT OF CHASSIS WITH LIFTING PADS. REFER TO ALI LIFTING POINTS GUIDE.
- ◆ ONLY WHEN THE SAFETY DEVICES OF THIS LIFT ARE WORKING PROPERLY SHOULD THIS LIFT BE OPERATED FOR NORMAL USE.

WHEN RAISING AND LOWERING:

- ◆ WHEN THE LIFT IS RAISING OR LOWERING, WATCH VEHICLE SO THAT IMMEDIATE ACTION CAN BE TAKEN IN CASE OF EMERGENCY.
- ◆ REMOVE HEAVY OBJECTS AND PEOPLE FROM VEHICLE BEFORE RAISING.
- ◆ DO NOT USE AUXILIARY STANDS OR JACKS UNDER LIFT WHILE LOWERING.
- ◆ PAY ATTENTION TO THE SAFETY OF PERSONEL AND THEIR FEET WHILE LOWERING. KEEP HANDS AND FEET AWAY FROM SCISSOR MECHANISM WHEN RAISING AND LOWERING.
- ◆ KEEP VEHICLE HORIZONTAL WHILE LIFTING AND LOWERING. IF VEHICLE TILTS, STOP RAISING/LOWERING AND CONTACT SERVICE REPRESENTATIVE.
- ◆ NEVER PUT PARTS, TOOLS, OR OTHER ITEMS ON TOP OR INSIDE OF PLATFORMS.
- ◆ ENSURE THAT LIFT IS COMPLETELY LOWERED AND ARMS SWUNG INWARD BEFORE REMOVING VEHICLE OR DAMAGE CAN OCCUR TO VEHICLE AND LIFT.
- ◆ STAND AWAY FROM LIFT WHEN IT IS LOWERING AND RAISING.

WHILE WORKING ON CAR:

- ◆ LOWER THE LIFT TO THE LOWEST POSITION WHEN UNATTENDED.
- ◆ BEFORE STARTING WORK, ENSURE THAT THE LIFT IS LOWERED ONTO ITS LOCKS AND THE LOCK MECHANISM IS FULLY ENGAGED.
- ◆ AVOID EXCESSIVE ROCKING OF VEHICLE.
- ◆ REMOVING HEAVY COMPONENTS FROM VEHICLE MAY UNBALANCE THE VEHICLE ON THE LIFT. ENSURE THAT VEHICLE REMAINS BALANCED ON LIFT WHILE WORKING.
- ◆ LIFT OPERATOR AND VEHICLE REPAIR PERSONNEL SHOULD KEEP ALL OTHER BYSTANDERS AWAY FROM LIFT.
- ◆ DISCONNECT POWER TO LIFT WHEN STARTING MAINTENANCE TO PREVENT OTHER PERSONNEL FROM ACTIVATING LIFT.

MISCELLANEOUS:

- ◆ DO NOT ALTER ANY PARTS OF THIS LIFT
- ◆ IF ANY PARTS ARE FAULT, DISCONTINUE USAGE OF LIFT UNTIL PARTS ARE REPAIRED.
- ◆ THIS LIFT IS NOT WATERPROOF, THEREFORE, DO NOT WASH THE CAR ON IT OR INSTALL THIS LIFT OUTDOORS. IF LIFT IS INSTALLED IN A PIT, ENSURE THERE IS NO WATER IN IT. KEEP ELECTRICAL CONTROLS IN A DRY ENVIRONMENT AT ALL TIMES.
- ◆ OPERATION OF THIS LIFT TO REMAIN WITHIN THE FOLLOWING SPECIFIED LIMITS: +5°C TO +40°C, HUMIDITY LESS THAN 50% IF TEMP OVER 40°C, ELEVATION UNDER 1000M FROM SEA LEVEL.
- ◆ STORAGE AND TRANSPORTATION ENVIRONMENT LIMIT: - 25°C TO +55°C OR LESS THAN 70°C IF THE DURATION OF TIME DOES NOT EXCEED 24 HOURS.
- ◆ NOISE LEVEL OF UNIT NOT TO EXCEED 70Db(A). REPAIR LIFT IF THIS IS EXCEEDED.

SAFETY TIPS

PLEASE POST THE **AUTOMOTIVE LIFT SAFETY TIPS CARD**, (A COPY IS INCLUDED IN THE PARTS BOX) WHERE THEY WILL BE CONSTANTLY REMINDED TO YOUR LIFT OPERATOR. FOR INFORMATION SPECIFIC TO THE LIFT, ALWAYS REFER TO THE MOHAWK MANUAL.

- | | |
|--|--|
| <ul style="list-style-type: none"> • INSPECT YOUR LIFT DAILY. NEVER OPERATE IT IF IT MALFUNCTIONS OR IF IT HAS BROKEN OR DAMAGED PARTS. REPAIRS SHOULD BE MADE WITH ORIGINAL MOHAWK PARTS. • OPERATING CONTROLS ARE DESIGNED TO CLOSE WHEN RELEASED. DO NOT BLOCK OPEN OR OVERRIDE THEM. • NEVER OVERLOAD YOUR LIFT BEYOND STATED LIFTING CAPACITY. RATED CAPACITY IS SHOWN ON NAMEPLATE AFFIXED TO THE LIFT. • ONLY TRAINED AND AUTHORIZED PERSONNEL SHOULD DO POSITIONING OF VEHICLE AND OPERATION OF THE LIFT. • DO NOT ALLOW CUSTOMERS OR BY- STANDERS TO OPERATE THE LIFT OR TO BE IN A LIFTING AREA DURING ITS OPERATION. ONLY PROPERLY TRAINED PERSONNEL SHOULD BE ALLOWED TO OPERATE LIFT. • NEVER RAISE A VEHICLE WITH PERSONS INSIDE. • ALWAYS KEEP LIFT AREA FREE OF OBSTRUCTIONS, DEBRIS, GREASE, AND OIL. • PERFORM THE PRE-OPERATION CHECK LIST, PER INSTRUCTIONS, BEFORE RAISING VEHICLE TO DESIRED HEIGHT. • BEFORE DRIVING VEHICLE INTO THE BAY, POSITION ARMS AND SUPPORTS TO PROVIDE | <p>UNOBSTRUCTED CLEARANCE. DO NOT HIT OR RUN OVER LIFT ARMS, ADAPTERS, OR AXLE SUPPORTS. THIS COULD DAMAGE LIFT OR VEHICLE.</p> <ul style="list-style-type: none"> • LOAD VEHICLE ON LIFT CAREFULLY. POSITION LIFT SUPPORTS TO CONTACT AT THE VEHICLE MANUFACTURER'S RECOMMENDED LIFTING POINTS. RAISE LIFT UNTIL SUPPORTS CONTACT VEHICLE. CHECK SUPPORTS FOR SECURE CONTACT WITH VEHICLE. RAISE LIFT TO DESIRED WORKING HEIGHT. CAUTION: IF YOU ARE WORKING UNDER VEHICLE, LIFT SHOULD BE RAISED HIGH ENOUGH FOR LOCKING DEVICE TO BE ENGAGED. • NOTE THAT WITH SOME VEHICLES, THE REMOVAL OR INSTALLATION OF COMPONENTS MAY CAUSE A CRITICAL SHIFT IN THE CENTER OF GRAVITY, AND RESULT IN RAISED VEHICLE INSTABILITY. REFER TO THE VEHICLE MANUFACTURER'S SERVICE MANUAL FOR RECOMMENDED PROCEDURES WHEN VEHICLE COMPONENTS ARE REMOVED. • BEFORE LOWERING LIFT, BE SURE TOOL TRAY'S, STANDS, ETC. ARE REMOVED FROM UNDER VEHICLE. RELEASE LOCKING DEVICES BEFORE ATTEMPTING TO LOWER LIFT. • BEFORE REMOVING VEHICLE FROM THE LIFT AREA, POSITION LIFT ARMS AND SUPPORTS TO PROVIDE AN UNOBSTRUCTED EXIT. |
|--|--|

PRE - OPERATION CHECK LIST

TRAINED OPERATOR

- THE OPERATOR MUST BE FULLY TRAINED AND QUALIFIED TO SAFELY AND EFFECTIVELY OPERATE THIS EQUIPMENT OF THIS SPECIFIC MAKE AND MODEL.

ABSENCE OF OBSTRUCTIONS

- THE TOTAL WORK AREA MUST BE FREE OF ANY AND ALL OBSTRUCTIONS AND BE GENERALLY CLEAN. (FREE OF OIL AND DEBRIS)

VISUAL INSPECTION

- THOROUGHLY INSPECT THE UNIT WITH A TRAINED EYE, NOTING ANY PROBLEM AREAS. REPORT ANY QUESTIONABLE ITEMS.

NO LOAD PERFORMANCE CHECK

- ALL MECHANICAL SAFETIES OPERATE PROPERLY AND CONSISTENTLY.
- NO EXTERNAL FLUID LEAKS.
- NO BLEED DOWN.
- EFFORTLESS AND SIMULTANEOUS MOVEMENT.
- LEVEL LIFTING.
- CONTROLS FUNCTION PROPERLY.
- ALL SAFETY MECHANISMS FULLY FUNCTIONAL.

PREVIOUS DAY' S OPERATION REPORT

- VERIFY WITH SUPERVISOR THAT THERE WAS NO PROBLEMS EXPERIENCED THE PREVIOUS DAY. IF THERE WERE ANY PROBLEMS, VERIFY THAT ALL NECESSARY REPAIRS HAVE BEEN COMPLETED.

MAINTENANCE PROCEDURES

QUALIFIED MAINTENANCE PERSONNEL ONLY

DAILY

- ENSURE THAT THE MOVEMENT OF THE LIFT IS SMOOTH. CLEAN LIFT, SUPPLY OIL AND LUBRICATE AS NEEDED.
- REPORT ANY AND ALL EQUIPMENT MALFUNCTIONS IMMEDIATELY.
- CHECK FOR PROPER ENGAGEMENT/DISENGAGEMENT OF LOCK MECHANISM. ENSURE NO BREAKAGE OF TENSION CABLE. ADJUST CABLE AS NEEDED.
- ♦ CHECK FOR LEAKAGE OF ALL HYDRAULIC CONNECTIONS. KEEP CLEAN AND DRY.
- ♦ CHECK FOR ANY ABNORMAL NOISE FROM POWER UNIT AND PUMP. KEEP CLEAN AND LUBRICATE.
- KEEP AREA AROUND THIS EQUIPMENT FREE OF DIRT, SAND, WATER, ETC.

MONTHLY

- INSPECT ALL HYDRAULIC COMPONENTS FOR LEAKS, DEFORMATION, WEAR OR CORROSION.
- TIGHTEN ALL FASTENERS, SCREWS AND HYDRAULIC FITTINGS AS REQUIRED.
 1. ALL O - RING BOSS FITTINGS JAM NUTS ARE TO BE TIGHTENED TO 15-FOOT POUNDS TORQUE.
 2. ALL PIPE FITTINGS, IF LEAKING IS TO BE REMOVED, RE-SEALED, AND RE - INSTALLED. (SELECT - UNITE THREAD SEALANT OR EQUIVALENT ON FITTING THREADS)
- ♦ CHECK ALL WIRE CONNECTIONS. MAKE SURE WIRES ARE CONNECTED PROPERLY.
- ♦ CHECK HYDRAULIC FLUID. IF IT IS DIRTY, REPLACE WITH CLEAN FLUID. ALWAYS USE A CLEAN FUNNEL AND FILTER. USE DEXRON III HYDRAULIC FLUID.
- ♦ INSPECT FOR CRACKS IN THE LOCK MECHANISM, AND ON OTHER PARTS OF THE LIFT. REPLACE PARTS AS NEEDED.
- ♦ CHECK FOR RUST ON PARTS. REMOVE RUST, LUBRICATE AND PAINT AS NEEDED.
- QUALIFY / RE-QUALIFY ALL PERSONNEL IN THE SAFE OPERATION OF THIS UNIT.

NOTES:

TROUBLE SHOOTING

WARNING: NEVER ATTEMPT TO LOOSEN HYDRAULIC FITTINGS, OR OVERRIDE SAFETY DEVICES IN AN ATTEMPT TO CORRECT A PROBLEM. ALL TESTS ARE TO BE PERFORMED WITH **NO** VEHICLE.

POSSIBLE CAUSE	SOLUTION
NOT RAISING	
NO POWER	CHECK POWER SUPPLY TO LIFT. SWITCH ON POWER
FAULTY "UP" SWITCH	CHECK "UP" SWITCH CONNECTIONS PER ELECTRICAL SCHEMATIC. REPLACE "UP" SWITCH IF AS REQUIRED.
FAULTY MOTOR	REPAIR OR REPLACE MOTOR.
FAULTY PUMP OR DISONNECTION OF CONNECTOR	REPAIR OR REPLACE PUMP
UNIT OVERLOADED	VEHICLE IS TO HEAVY TO BE RAISED
NOT ENOUGH HYDRAULIC FLUID IN TANK	CHECK HYDRAULIC OIL LEVEL WHEN FULLY LOWERED. USE DEXRON III HYDRAULIC FLUID AS REQUIRED.
RELIEF VALVE OUT OF ADJUSTMENT	ADJUST RELIEF VALVE ON PUMP AS REQUIRED.
NOT LOWERING	
MECHANICAL LOCKS ENGAGED	RAISE UNIT A FEW INCHES. DISENGAGE MECHANICAL LOCKS AND LOWER.
MANUAL LOWERING HANDLE NOT ENGAGED	PULL ON LOWERING HANDLE.
VELOCITY FUSE ACTIVATED.	RAISE UNIT A FEW INCHES. DISENGAGE MECHANICAL LOCKS AND LOWER.
DEBRIS UNDER LIFT (TOOLS ETC.)	CLEAR DEBRIS FROM UNDER LIFT.
OBSTRUCTION UNDER VEHICLE OR LIFT	REMOVE OBSTRUCTION.

TROUBLE SHOOTING, CONTINUED

POSSIBLE CAUSE	SOLUTION
RAISING SLOWLY	
FAULTY MOTOR	REPAIR OR REPLACE MOTOR.
FAULTY PUMP OR DISONNECTION OF CONNECTOR	REPAIR OR REPLACE PUMP
UNIT OVERLOADED	VEHICLE IS TO HEAVY TO BE RAISED
NOT ENOUGH HYDRAULIC FLUID IN TANK	CHECK HYDRAULIC OIL LEVEL WHEN FULLY LOWERED. USE DEXRON III HYDRAULIC FLUID AS REQUIRED.
LEAKAGE OF HYDRAULIC CIRCUIT.	CHECK FOR LEAKAGE. REPAIR OR REPLACE PARTS AS NEEDED.
LOWERING SLOWLY	
POWER UNIT LOWERING VALVE CONTAMINATION	BACK FLUSH POWER UNIT: PULL DOWN ON THE LOWERING HANDLE, AND THEN ENGAGE THE UP BUTTON AT THE SAME TIME. RUN UNIT APPROX. 10 SECONDS
BLOCK IN THE HYDRAULIC LINES	DISASSEMBLE AND CLEAN.
EXTERNAL HYDRAULIC LEAKS	
NOTE: TIGHTEN ALL FITTINGS PER SPECIFICATIONS	
CYLINDER	THOROUGHLY CLEAN THE CYLINDER. VERIFY LEAK ORIGIN. FITTINGS ARE TO BE TIGHTENED PER SPECIFICATIONS
BAD O-RING (O-RING TYPE FITTINGS)	CHANGE O-RING
LOOSE PIPE FITTING	REMOVE, RESEAL, AND RE-INSTALL FITTING. SEAL ALL PIPE FITTING CONNECTIONS WITH THREAD SEALANT MOHAWK PART # 601-610-002 NOTE: DO NOT USE TEFLON TAPE.
MECHANICAL LOCK RE-ENGAGES	
LOCK RELEASE TENSION LINE OUT OF ADJUSTMENT	ADJUST SETTING OF TENSION LINE AT POWER UNIT AND LOCK..
BROKEN OR WORN PARTS	
PART BROKEN OR WORN	REPAIR OR REPLACE PART. CONTACT MOHAWK RESOURCES LTD. SERVICE DEPARTMENT OR YOUR LOCAL MOHAWK DISTRIBUTOR.

SERVICE CHART

MODEL HR-6

SERIAL NUMBER: _____

DATE OF INSTALLATION: _____

DATE	PART REPLACED / SERVICED	SERVICE COMPANY	SERVICED BY

MAINTENANCE CHART

DATE	MAINTENANCE PERFORMED	SERVICE COMPANY	SERVICED BY

MOHAWK

MODEL HR-6

PART DIAGRAMS



MOHAWK RESOURCES LTD.

65 VROOMAN AVE.

AMSTERDAM, NY 12010

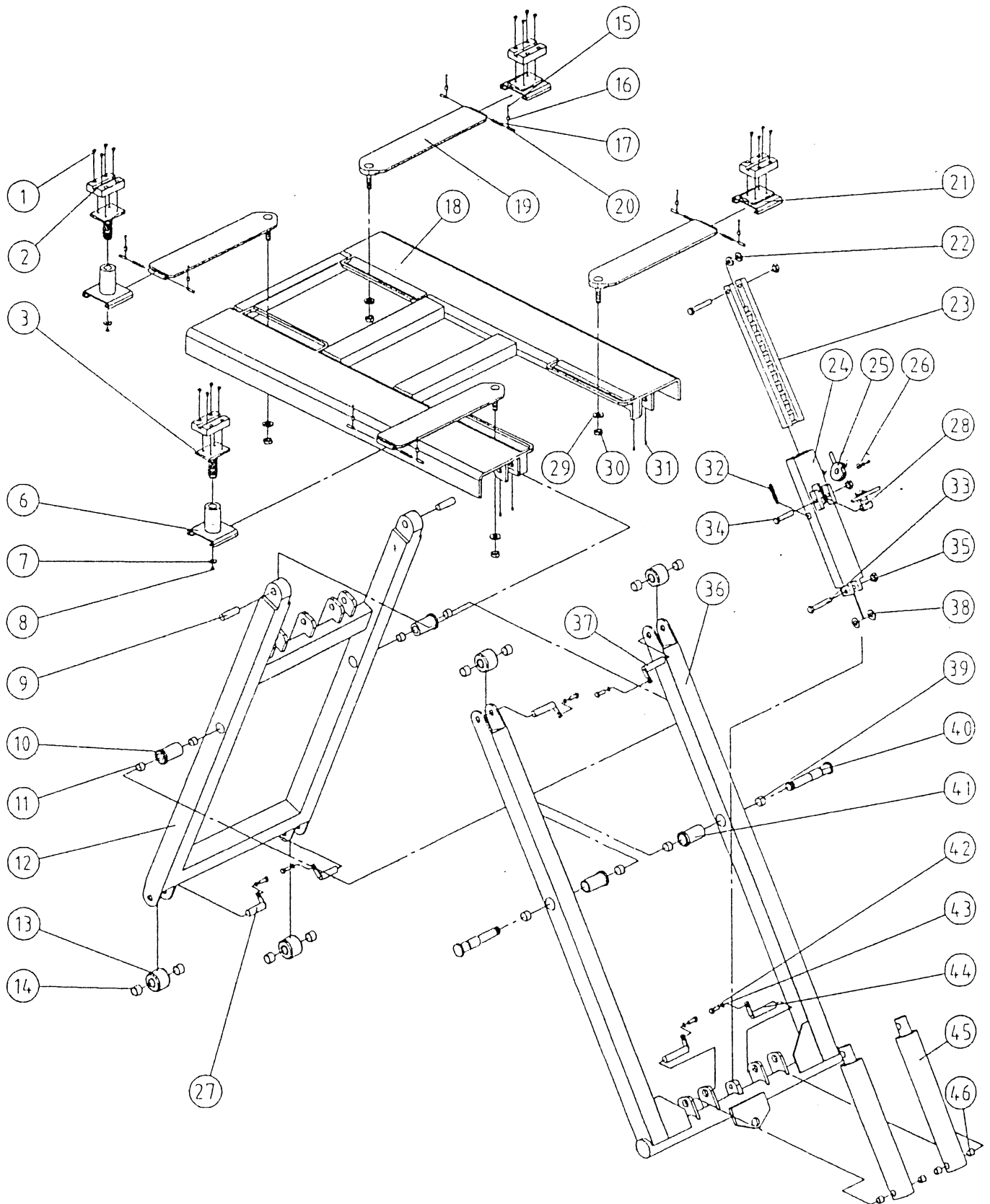
TOLL FREE: 1-800-833-2006

LOCAL: 1-518-842-1431

FAX: 1-518-842-1289

INTERNET: WWW.MOHAWKLIFTS.COM

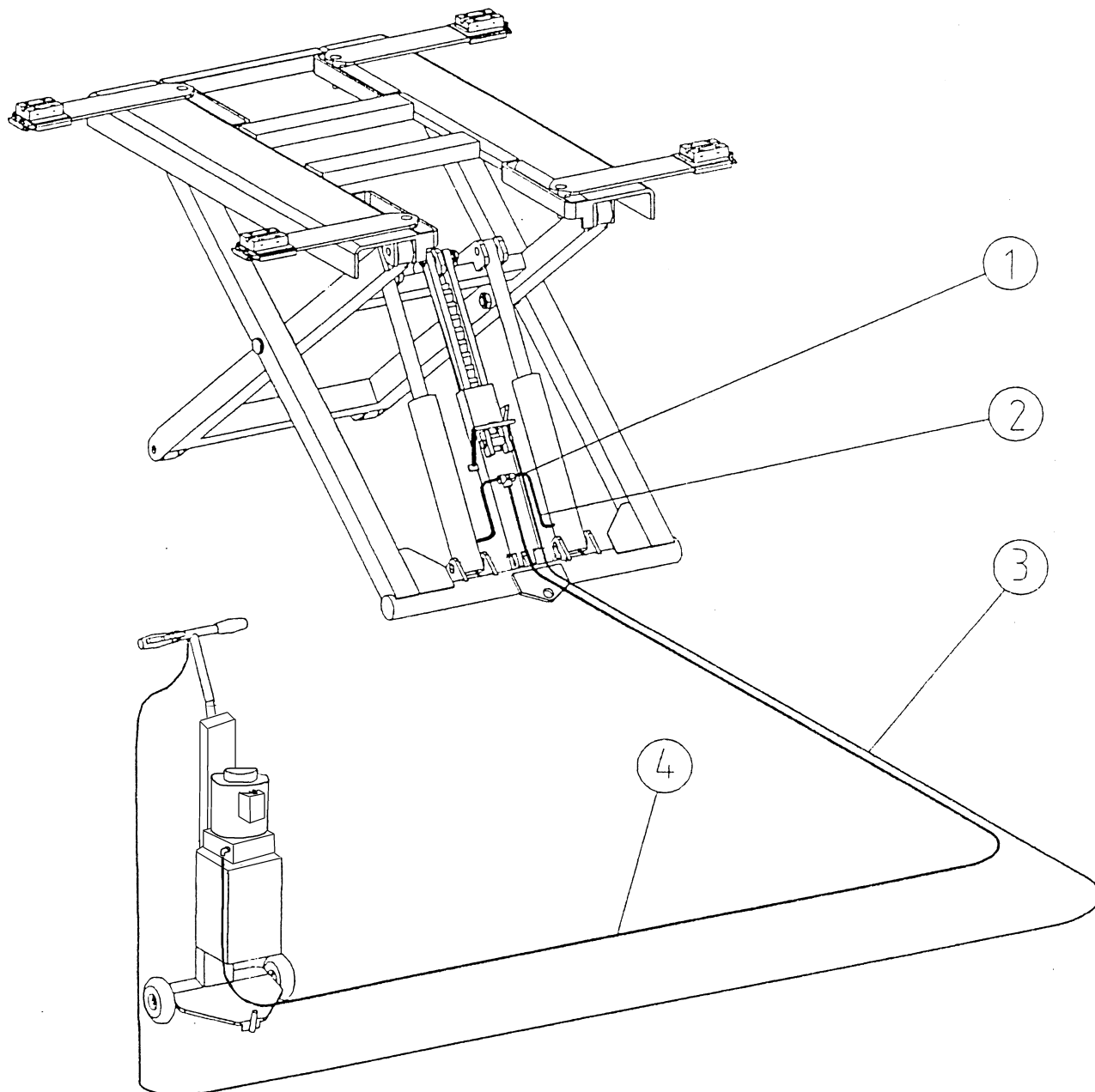
E-MAIN: Rbagwell@MOHAWKLIFTS.COM



MAIN SCISSOR MECHANISM - Figure 1

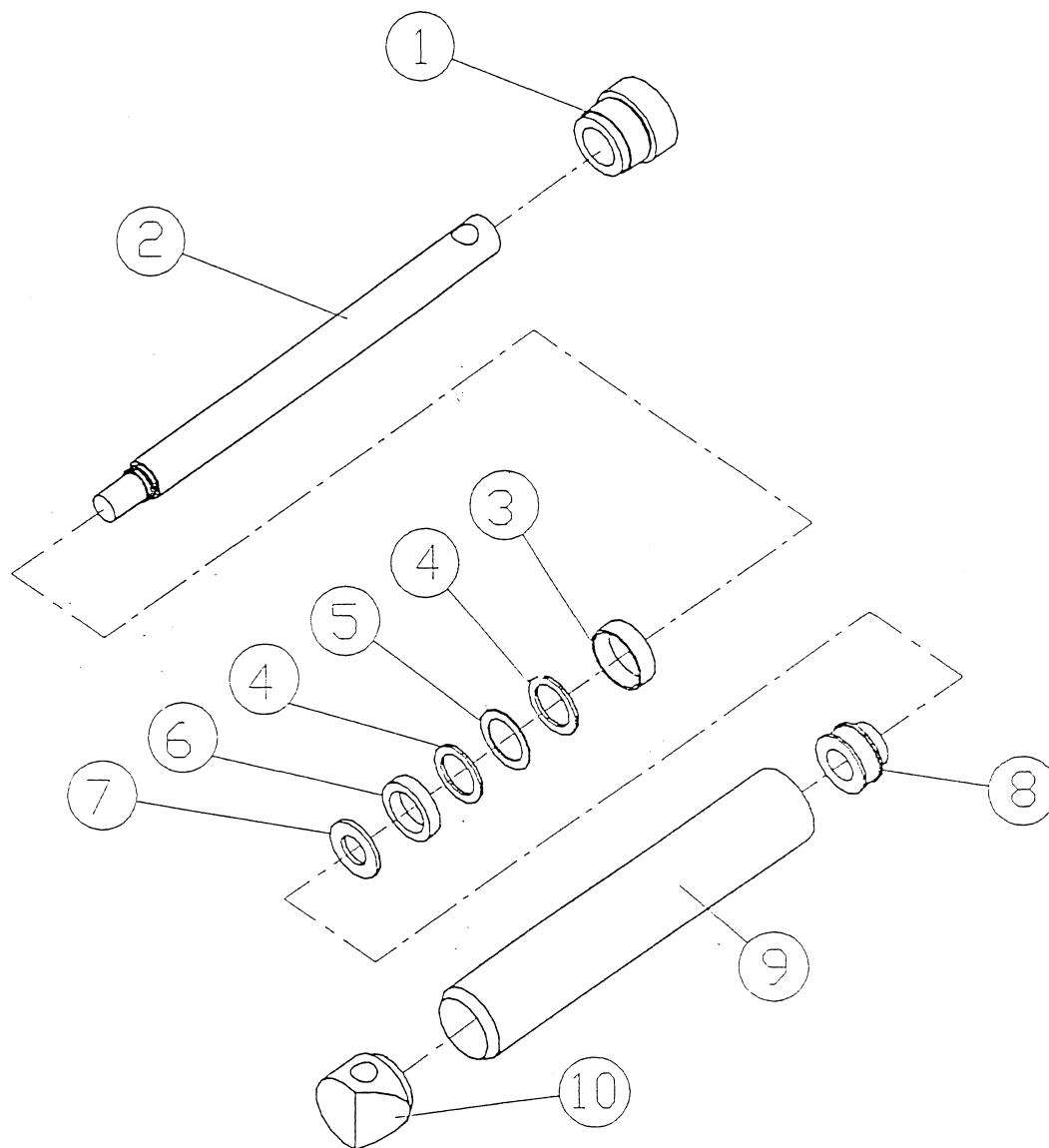
No.	Description	Specification	Q'ty	Marks
5611001	Socket bolt	M8*10L	32	
5611002	Rubber pad	118*80*27T	8	
5611003	Adapter	75*110*9T	4	
5611004				
5611005				
5611006	Adapter sliding seat		4	
5611007	Washer	Ø10*Ø30*2.7T	8	
5611008	Bolt	M6	8	
5611009	Shaft	Ø25*80L	2	
5611010	Shaft cover	Ø60*93L	2	
5611011	DU bearing	3025	4	
5611012	Support	80*80	2	
5611013	Wheel	Ø75*76L	2	
5611014	DU bearing	2525	4	
5611015	Socket bolt	M4*25L	8	
5611016	Screw cover	Ø12.7*15L	8	
5611017	Compression spring	Ø0.8* Ø9.3*90L	4	
5611018	Plate	10444*1540*100	1	
5611019	Swing arm	125*600*20T	4	
5611020	Lock bar	Ø9*35L	8	
5611021	Adapter	75*110*9T	4	
5611022	Rack spacer	Ø35*Ø16.5*7T	2	
5611023	Rack	455L*11	1	
5611024	Rack seat	100*540*50	4	
5611025	Rack lock	12T	1	
5611026	Fixed joint set		1	

No.	Description	Specification	Q'ty	Marks
5611027	Lock shaft	Ø25*82L	2	
5611028	Safety lock	49*16*30T	1	
5611029	Spacer	Ø40*Ø20*5T	4	
5611030	Nut	W3/4"	4	
5611031	Spacer	Ø35*Ø16.5*7T	4	
561032	Expansion spring	Ø1.6* Ø17*70L	1	
5611033	Hex. Bolt	M16*100L	2	
5611034	Hex. Bolt	M16*80L		
5611035	Nut	M16	3	
5611036	Support	80*80	2	
5611037	Lock shaft	Ø25*100L	2	
5611038	Washer	M16		
5611039	DU bearing	3025	4	
5611040	Shift shaft	Ø75*60	2	
5611041	Shaft cover	Ø60*93L	2	
5611042	Hex. Bolt	M8*20L	6	
5611043	Spring washer	M8	6	
5611044	Lock shaft	Ø25*115L	2	
5611045	Hydraulic cylinder	Ø85*Ø70*Ø45*ST360	2	
5611046	DU bearing	2525	4	
5611047				
5611048				
5611049				
5611050				
5611051				
5611052				



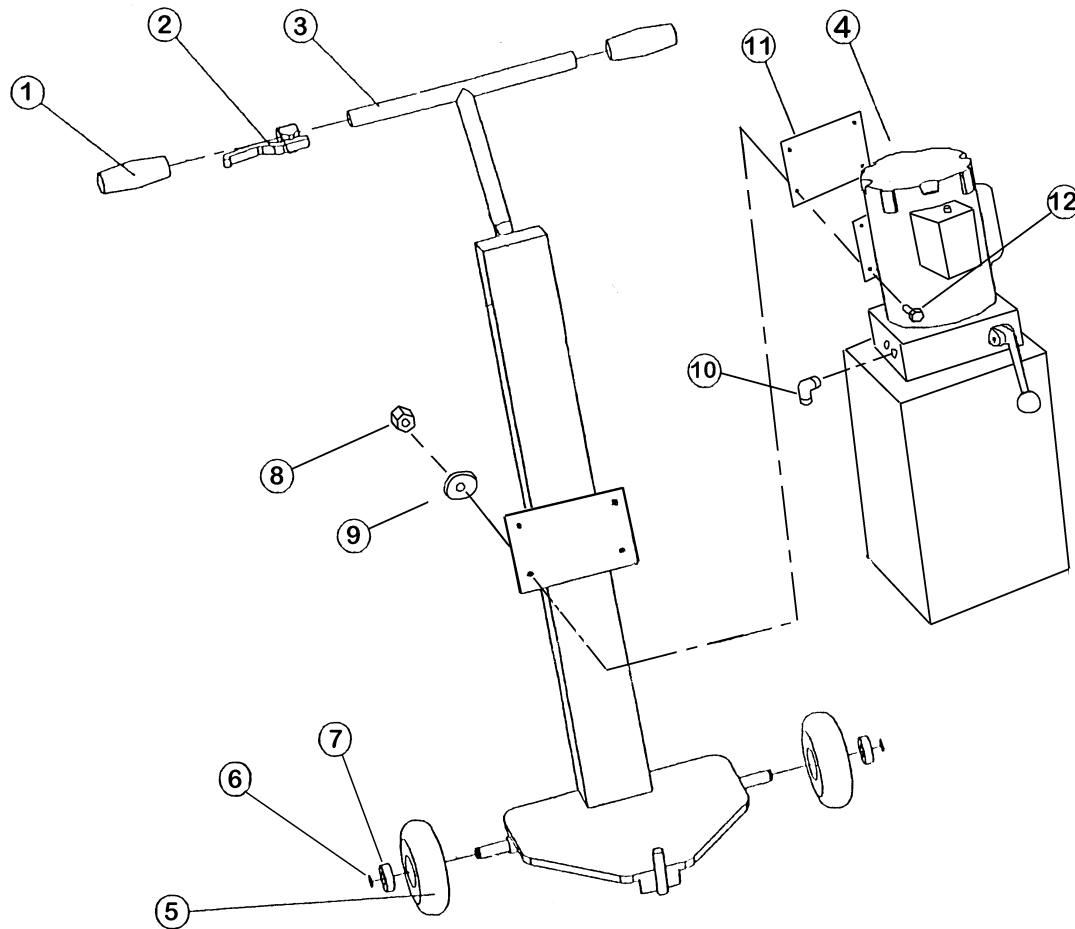
HR-6 FINAL ASSEMBLY - Figure 2

No.	Description	Specification	Q'ty	Marks
5614001	Hydraulic joint	3/8"PT T-joint	1	
5614002	Oil hose	Ø1/4"*390L	2	
5614003	Brake wire	3000L	1	
5614004	Oil hose	Ø1/4"*3000L	1	



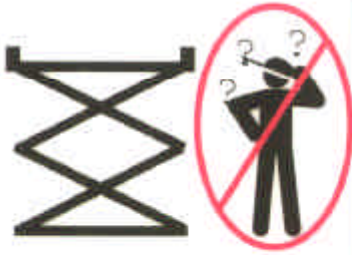
CYLINDER ASSEMBLY - Figure 3

No.	Description	Specification	Q'ty	Marks
5613001	Cylinder front cover	Ø85*70L	2	
5613002	Shaft	Ø45*549L	2	
5613003	Oil seal	Ø70*Ø64*20T	2	
5613004	Piston ring	Ø68*Ø50*4T	2	
5613005	Flat ring	Ø70*Ø50*2T	2	
5613006	Oil seal	Ø70*Ø50*14.5T	2	
5613007	Nut ring	Ø68*M36*5.5T	2	
5613008	Piston	Ø69*44.5	2	
5613009	Pipe	Ø85*Ø75*Ø45	2	
5613010	Cylinder rear cover	Ø85*62	2	

**POWER UNIT ASSEMBLY - Figure 4**

ITEM	PART NUMBER	PART NAME	SPECIFICATION	QTY
1	5612002	Handle		2
2	5612017	Braking Handle		1
3	5612019	Control Dolly	56105000	1
4	601-300-057	Power Unit	1 HP, 2 Gallon	1
5	5612016	Moving Wheel	4-Ø145x47	2
6	5612045	C ring	S17	2
7	5612050	Bearing	Ø19xØ40x12T	2
8	601-690-001	Nut, Lock	5/16-18 NC	4
9	600-710-003	Washer, Flat	5/16	4
10	601-420-017	Fitting, Elbow, 90Deg	-6 ORB to -6 JIC	1
11	007-007-174	Rubber Pad	1/8 X 6 1/2 X 6 1/2	1
12	600-640-001	Bolt, Hex Head	5/16-18 NC x 1" Lg	4

⚠ CAUTION



Lift to be used
by trained operator
only.

©

Power Unit: Secure placard
near lift controls.



Lift Control
Console:
Secure
placard in an
accessible
location.

The messages and pictographs shown are generic in nature and are meant to generally represent hazards common to all automotive lifts regardless of specific style.

Funding for the development and validation of these labels was provided by the Automotive Lift Institute, PO Box 33116 Indialantic, FL 32903.

They are protected by copyright. Set of labels may be obtained from ALI or its member companies.

© 1992 by ALI, Inc.

ALI/WL300csw

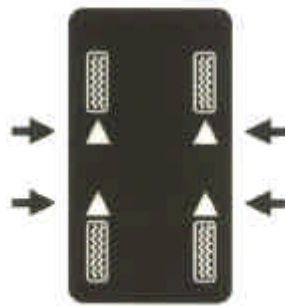
⚠ CAUTION



Authorized personnel
only in lift area.

©

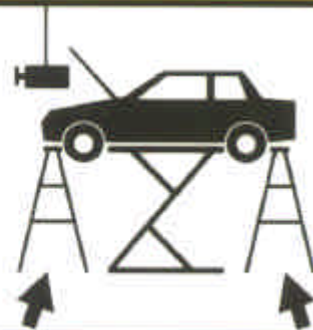
⚠ CAUTION



Use vehicle
manufacturer's
lift points.

©

⚠ CAUTION



Always use
safety stands when
removing or installing
heavy components.

©

SAFETY INSTRUCTIONS



Read operating
and safety manuals
before using lift.

©

SAFETY INSTRUCTIONS



Proper maintenance
and inspection
is necessary
for safe operation.

©

SAFETY INSTRUCTIONS



Do not operate
a damaged lift.

©

SAFETY WARNING LABELS FOR HINGED FRAME ENGAGING LIFTS

Lift Owner/User Responsibilities:

- A. This Safety Warning placard **SHALL** be displayed in a conspicuous location in the lift area.
- B. Use one of the mounting arrangements illustrated on back of this placard.
- C. These Safety Warning labels supplement other documents supplied with the lift.
- D. Be certain all lift operators read and understand these labels, operating instructions and other safety related information supplied with the lift.



MOHAWK.

Because Quality Lasts Forever.



Model USL-6000

Full rise, space-saving, no-post, portable scissors lift, offers full under-car access.



Model A-7

The A-7 is a 7,000 lb. capacity asymmetric lift that allows full opening of all vehicle doors as well as total undercar/underdash access, thanks to Mohawk's unique "clear-floor" design. Low 4" arms accommodate all imports and low-riding sports cars. Includes both 3" and 6" truck adapters.

Model System I

The 9,000 lb. capacity System I, like all Mohawk lifts, features Mohawk's patented hydraulic equalization system with adjustable overhead (or optional underground) hydraulic lines. Offers low 3 1/2" swing arms and comes standard with truck adapters.



Model LMF-12, TP-15, TP-18, TP-26 & TP-30

These 12,000 to 30,000 lb. capacity models are the ideal heavy-duty lifts for up to Class VI trucks. Mohawk's unique "clear floor" design makes these the perfect lifts for all fleet applications. Truck adapters are standard equipment.



Model LMF-12



Model TR-50

TR-Series Ramp Style Lifts

Standard models from 25,000 up to 125,000 lbs. for total under-vehicle access.

Ramp lengths from 20' to 50'. Completely operated by a single technician, and features fully interlocked, redundant safety systems.

MOHAWK

Mohawk Industrial Park • P.O. Box 110
Amsterdam, NY 12010
1-800-833-2006 or 518-842-1431
FAX 518-842-1289

www.mohawklifts.com