

MOHAWK

MADE IN THE U.S.A.



MODEL TL-36

**36,000 LB. CAPACITY
MOBILE TWO POST TRUCK JACK MANUAL**

WARRANTY CARD

THANK YOU...
FOR SENDING IN
YOUR
REGISTRATION
CARD.
MOHAWK SERVICE
DEPARTMENT

☒ INSTALLATION

☒ OPERATION

☒ MAINTENANCE

MOHAWK RESOURCES LTD.

65 VROOMAN AVE.
P.O. BOX 110
AMSTERDAM, NY 12010
TOLL FREE: 800-833-2006
FAX: 518-842-1289
LOCAL: 518-842-1431

**READ MANUAL
THOROUGHLY
BEFORE INSTALLING,
OPERATING OR
MAINTAINING LIFT !!**

IMPORTANT SAFETY INSTRUCTIONS

When using your garage equipment, basic safety precautions should always be followed, including the following:

1. Read all instructions. Before assembling unit, become familiar with part names and have a good understanding of how this unit is to be assembled and of how individual parts operate.
2. Care must be taken as burns can occur from touching hot parts.
3. Do not operate equipment with a damaged cord or if the equipment has been dropped or damaged - until it has been examined by a qualified serviceman.
3. Do not let cord or hoses come in contact with hot manifolds or moving fan blades.
4. If an extension cord is necessary, a cord with a current rating equal to or more than that of the equipment should be used. Cords rated for less current than the equipment may overheat. Care should be taken to arrange the cord so that it will not be tripped over or pulled.
5. Always unplug equipment from electrical outlet when not in use. Never use the cord to pull the plug from the outlet. Grasp plug and pull to disconnect
6. To reduce the risk of fire, do not operate equipment in the vicinity of open containers of flammable liquids (gasoline).



Risk of Explosion: This equipment has internal arcing and sparking parts which should not be exposed to flammable vapors. This equipment is only suitable for installation in a garage having sufficient air circulation to be considered a non-hazardous location.

7. Adequate ventilation should be provided when working on operating internal combustion engines.
8. Keep hair, loose clothing, fingers, and all parts of body away from moving parts.
9. To reduce the risk of electric shock, do not use on wet surfaces or expose to rain.
10. Use only as described in this manual. Use only manufacturer's recommended attachments.
11. ALWAYS WEAR SAFETY GLASSES. Everyday eyeglasses only have impact resistant lenses, they are NOT safety glasses.

SAVE THESE INSTRUCTIONS

HAVE A QUESTION?

**Call your local
Mohawk distributor
For parts, service and technical support.**

Distributor Place Card Here

Please have this unit's model and serial number when calling for service.

Model Number _____

Serial Number _____

OR CONTACT:

MOHAWK RESOURCES LTD.

65 Vrooman Ave.

P.O. Box 110

Amsterdam, NY 12010

Toll Free: 1-800-833-2006

Local: 1-518-842-1431

Fax: 1-518-842-1289

Internet: www.MOHAWKLIFTS.com

E-Mail: Service@MOHAWKLIFTS.com

MOHAWK WARRANTIES

EFFECTIVE DATE: 4/14/2003

GENERAL WARRANTY INFORMATION:

MOHAWK'S OBLIGATION UNDER THIS WARRANTY IS LIMITED TO REPAIRING OR REPLACING ANY PART OR PARTS RETURNED TO THIS FACTORY, TRANSPORTATION CHARGES PREPAID, WHICH PROVE UPON INSPECTION TO BE DEFECTIVE AND WHICH HAVE NOT BEEN MISUSED. DAMAGE OR FAILURE TO ANY PART DUE TO FREIGHT DAMAGE OR FAULTY MAINTENANCE IS NOT COVERED UNDER THIS WARRANTY. THIS WARRANTY DOES NOT COVER ANY CONSEQUENTIAL OR INCIDENTAL DAMAGES INCLUDING, BUT NOT LIMITED TO, LOST REVENUES OR BUSINESS HARM. THIS EQUIPMENT HAS BEEN DESIGNED FOR USE IN NORMAL COMMERCIAL VEHICLE MAINTENANCE APPLICATIONS. A SPECIFIC INDIVIDUAL WARRANTY MUST BE ISSUED FOR UNITS THAT DEVIATE FROM INTENDED USAGE, SUCH AS HIGH CYCLE USAGE IN INDUSTRIAL APPLICATIONS, OR USAGE IN EXTREMELY ABUSIVE ENVIRONMENTS, ETC.. MOHAWK RESERVES THE RIGHT TO DECLINE RESPONSIBILITY WHEN REPAIRS HAVE BEEN MADE OR ATTEMPTED BY OTHERS. THIS WARRANTY DOES NOT COVER DOWNTIME EXPENSES INCURRED WHEN UNIT IS IN REPAIR. THE MODEL NAME AND SERIAL NUMBER OF THE EQUIPMENT MUST BE FURNISHED WITH ALL WARRANTY CLAIMS. THIS WARRANTY STATEMENT CONTAINS THE ENTIRE AGREEMENT BETWEEN MOHAWK RESOURCES LTD. AND THE PURCHASER UNLESS OTHERWISE SPECIFICALLY EXPRESSED IN WRITING. THIS NON-TRANSFERABLE WARRANTY APPLIES TO THE ORIGINAL PURCHASER ONLY. THIS WARRANTY IS APPLICABLE TO UNITS LOCATED ONLY IN THE UNITED STATES OF AMERICA AND CANADA. CONTACT MOHAWK RESOURCES LTD. FOR SPECIFIC WARRANTY PROVISIONS FOR UNITS LOCATED OUTSIDE OF THESE COUNTRIES.

5-YEAR WARRANTY:

THIS WARRANTY IS APPLICABLE TO THE FOLLOWING MOHAWK LIFTS ONLY: A-7, SYSTEM IA, SYSTEM IA-10, TOMAHAWK-9000, LMF-12, TP-15, TP-18, TP-20, TP-26, TP-30 AND STANDARD OPTIONS.

3-YEAR WARRANTY:

THIS WARRANTY IS APPLICABLE TO THE FOLLOWING MOHAWK LIFTS ONLY: TSL-7, PL-6000, TR-19, TR-25, FL-25, TR-33, TR-35, TR-40, TR-50, TR-60, TR-75, TR-110, MP-SERIES AND RP-SERIES MOBILE COLUMN LIFTS, SL-SERIES SCISSOR LIFTS, FP-SERIES LIGHT DUTY FOUR POST LIFTS, TL-SERIES LIFTS AND STANDARD OPTIONS.

2-YEAR WARRANTY:

THIS WARRANTY IS APPLICABLE TO THE FOLLOWING MOHAWK LIFTS ONLY: PARALLELOGRAM SERIES AND USL-6000 AND STANDARD OPTIONS.

1-YEAR WARRANTY:

THIS WARRANTY IS APPLICABLE TO THE FOLLOWING MOHAWK LIFTS ONLY: HR-6, TD-1000, CT-1000 AND STANDARD OPTIONS.

STRUCTURAL COMPONENTS:

ALL STRUCTURAL AND MECHANICAL COMPONENTS OF THIS UNIT ARE GUARANTEED FOR THE ABOVE STATED TIME FRAME, SPECIFIC TO MODEL, FROM THE DATE OF INVOICE, AGAINST DEFECTS IN WORKMANSHIP AND/OR MATERIALS WHEN LIFT IS INSTALLED AND USED ACCORDING TO SPECIFICATIONS.

SEE MOHAWK'S "EXTENDED LIFETIME CYLINDER WARRANTY" FOR SPECIFIC WARRANTY PROVISIONS FOR HYDRAULIC CYLINDERS. THE "EXTENDED LIFETIME CYLINDER WARRANTY" IS APPLICABLE TO THE FOLLOWING MOHAWK LIFTS ONLY: A-7, SYSTEM I, LMF-12, TP-15, TP-18, TP-20, TP-26, TP-30, MP-SERIES AND TL-SERIES LIFTS.

POWER UNIT:

ALL POWER UNIT COMPONENTS (MOTOR, PUMP AND RESERVOIR) ARE GUARANTEED FOR THE ABOVE STATED TIME FRAME, SPECIFIC TO MODEL, FROM THE DATE OF INVOICE, AGAINST DEFECTS IN WORKMANSHIP AND/OR MATERIALS WHEN THE LIFT IS INSTALLED AND USED ACCORDING TO SPECIFICATIONS.

ELECTRICAL COMPONENTS:

ALL ELECTRICAL COMPONENTS (EXCLUDING MOTOR) ARE GUARANTEED FOR ONE YEAR FOR PARTS ONLY (EXCLUDING LABOR), FROM THE DATE OF INVOICE, AGAINST DEFECTS IN WORKMANSHIP AND/OR MATERIALS WHEN THE LIFT IS INSTALLED AND USED ACCORDING TO SPECIFICATIONS.

PNEUMATIC (AIR) COMPONENTS:

ALL PNEUMATIC (AIR) COMPONENTS (I.E. AIR CYLINDERS AND POPPET AIR VALVES) ARE GUARANTEED FOR ONE YEAR FOR PARTS ONLY (EXCLUDING LABOR), FROM THE DATE OF INVOICE, AGAINST DEFECTS IN WORKMANSHIP AND/OR MATERIALS WHEN THE LIFT IS INSTALLED AND USED ACCORDING TO SPECIFICATIONS.

WARRANTY EXCEPTIONS:

ALL "SPECIAL" LIFTS AND/OR "CUSTOMIZED" OPTIONS ON THIS UNIT ARE GUARANTEED FOR ONE YEAR FOR PARTS ONLY (EXCLUDING LABOR), FROM THE DATE OF INVOICE, AGAINST DEFECTS IN WORKMANSHIP AND/OR MATERIALS WHEN THE LIFT IS INSTALLED AND USED ACCORDING TO SPECIFICATIONS.

THIS WARRANTY SUPERSEDES ALL OTHER WARRANTY POLICIES PREVIOUSLY STATED AND IN ALL OTHER MOHAWK PRODUCT SPECIFIC LITERATURE.

CONTENTS

TOPIC	PAGE
• INSTALLATION/OPERATION TEXT	
GENERAL INFORMATION	6 - 7
GENERAL WARNINGS	8 - 9
GENERAL PARTS LIST	10
UNPACING & SETUP INSTRUCTIONS	11
LIFTING INSTRUCTIONS	12
SAFETY TIPS	13
PRE OPERATION CHECK LIST	14
MAINTENANCE PROCEDURES	15
TROUBLE SHOOTING CHART	16
SERVICE CHART	17
MAINTENANCE CHART	17
• ILLUSTRATIONS	
TL-36 AIR/HYDRAULIC ILLUSTRATIONS	
TL-36 ELECTRIC/HYDRAULIC ILLUSTRATIONS	

GENERAL INFORMATION

BEFORE INSTALLING/POSITIONING A LIFT

- BEFORE INSTALLING/POSITIONING A MOHAWK LIFT REVIEW THE FOLLOWING ITEMS . EACH REPAIR SHOP BAY IS DIFFERENT. IN AN ATTEMPT TO PREVENT OVERSIGHTS, ALL OF THE FOLLOWING INFORMATION MUST BE VERIFIED.

OVERHEAD OBSTRUCTIONS:

THE AREA IN WHICH THE LIFT WILL BE LOCATED SHALL BE FREE OF OBSTRUCTIONS. HEATERS, BUILDING SUPPORTS, ELECTRICAL CONDUIT. ALL OF THESE ITEMS ARE TO BE APPROXIMATELY 5 FEET HIGHER THAN THE VEHICLE BEING LIFTED.

CONCRETE FLOOR:

THIS LIFT MUST BE LOCATED ON A FLAT LEVEL CONCRETE FLOOR WITH SUFFICIENT STRENGTH TO SUPPORT THE VEHICLE AND THE LIFT. DO NOT USE THIS LIFT ON ASPHALT OR GRAVEL.

POWER SUPPLY:

REFER TO THE LIFT VERIFICATION SHEET FOR THE POWER SUPPLY SPECIFICATIONS.

BAY SIZE:

ENSURE THAT THE VEHICLE BEING LIFTED HAS ENOUGH SIDE CLEARANCE FOR THE MOBILE COLUMNS. SEE DIMENSIONAL DIAGRAM ENCLOSED.

CAPACITY & APPLICATION:

THIS LIFT IS ONLY RATED FOR 36,000 LBS MAXIMUM CAPACITY. IT IS ONLY DESIGNED TO LIFT THE FRONT OR BACK OF A VEHICLE FROM ONE SET OF TIRES. DO NOT USE THIS LIFT IN ANY OTHER MANNER. DO NOT USE THIS LIFT TO PICK UP A VEHICLE BY THE FRAME OR IN ANY OTHER MANNER OTHER THAN THAT FOR WHICH IT WAS ORIGINALLY DESIGNED. ENSURE THAT THE END OF THE VEHICLE BEING LIFTED DOES NOT EXCEED THE CAPACITY OF THIS LIFT.

IMPORTANT

- ALL INFORMATION, ILLUSTRATIONS, AND SPECIFICATIONS IN THIS MANUAL ARE SPECIFIC TO THE MOHAWK MODEL TL-36. WE RESERVE THE RIGHT TO MAKE CHANGES AT ANY TIME WITHOUT NOTICES.

GENERAL INFORMATION, CONTINUED**TL-36 STANDARD LIFT SPECIFICATIONS**

GROSS LIFTING CAPACITY	36,000 LBS.
LIFTING SPEED (UP CYCLE) APPROX.	2 MINUTES
LIFTING HEIGHT (STROKE)	28 INCHES
POST WIDTH	43 INCHES
POST HEIGHT	60 ½ INCHES
POST DEPTH	47 INCHES
POWER UNIT SYSTEM	ELECTRIC/HYDRAULIC or AIR/HYDRAULIC
LOCK SYSTEM	MULTI-POSITION MECHANICAL
FORK ADJUSTMENT	20" TO 40" DIAMETER TIRES
SHIPPING WEIGHT	600 LBS. PER POST, APPROX

AIR/HYDRAULIC POWER UNIT SPECIFICATIONS

MOTOR TYPE	AIR MOTOR
MOTOR MODEL	GAST #6AM-NRV-11A
MOTOR HORSE POWER	4 HP (ACTUAL POWER OUTPUT DEPENDENT ON AIR SUPPLY TO LIFT)
AIR PORTS	½" NPT
PRESSURE REQUIRED	90 PSI MINIMUM
MINIMUM INPUT AIR HOSE SIZE	3/8 ID HOSE MINIMUM
RELIEF VALVE SETTING (PSIG)	2450 PSI
RESERVOIR CAPACITY (GALLONS)	4 U.S. GALLON
POWER UNIT ORIENTATION	VERTICAL
HYDRAULIC FLUID MEDIUM	DEXRON III

ELECTRIC/HYDRAULIC POWER UNIT SPECIFICATIONS

MOTOR TYPE	ELECTRIC MOTOR
MOTOR HORSE POWER	2 HP
MOTOR RATING	230 VAC, 1 PHASE, 20 FLA
RELIEF VALVE SETTING (PSIG)	2450 PSI
RESERVOIR CAPACITY (GALLONS)	4 U.S. GALLON
POWER UNIT ORIENTATION	VERTICAL
HYDRAULIC FLUID MEDIUM	DEXRON III

GENERAL WARNINGS

RECOMMENDATIONS BY THE INDIVIDUAL USER OR USING ORIGINATOR FOR IMPROVING THIS PUBLICATION OR ANY ASPECT OF THE PRODUCT ARE ENCOURAGED AND SHOULD BE FORWARDED IN WRITING TO :

MOHAWK RESOURCES LTD.
PRODUCT IMPROVEMENTS
65 VROOMAN AVE
P.O. BOX 110
AMSTERDAM, NY, 12010

THIS IS NOT A VEHICLE LIFTING PROCEDURE MANUAL AND NO ATTEMPT IS MADE OR IMPLIED HEREIN TO INSTRUCT THE USER IN LIFTING METHODS PARTICULARLY TO THE INDIVIDUAL APPLICATION OF THE EQUIPMENT DESCRIBED IN THIS MANUAL. RATHER, THE CONTENTS OF THIS MANUAL ARE INTENDED AS A **BASE LINE** FOR OPERATION, MAINTENANCE, TROUBLE SHOOTING, AND PARTS LISTING OF THE UNIT AS IT STANDS ALONE AND AS IT IS INTENDED AND ANTICIPATED TO BE USED IN CONJUNCTION WITH OTHER EQUIPMENT.

PROPER APPLICATION OF THE EQUIPMENT DESCRIBED HEREIN IS LIMITED TO THE PARAMETERS DETAILED IN THE SPECIFICATIONS AND THE USES SET FORTH IN THE DESCRIPTIVE PASSAGES. ANY OTHER PROPOSED APPLICATION OF THIS EQUIPMENT SHOULD BE DOCUMENTED AND SUBMITTED IN WRITING TO MOHAWK RESOURCES LTD. FOR EXAMINATION. THE USER ASSUMES FULL RESPONSIBILITY FOR ANY EQUIPMENT DAMAGE, PERSONAL INJURY, OR ALTERATION OF THE EQUIPMENT DESCRIBED IN THIS MANUAL OR ANY SUBSEQUENT DAMAGES.

DO NOT WELD, APPLY HEAT, OR MODIFY THIS EQUIPMENT IN ANY MANNER WITHOUT WRITTEN AUTHORIZATION FROM MOHAWK RESOURCES LTD. CERTAIN ALLOY OR HEAT-TREATED COMPONENTS MAY BE DISTORTED OR

WEAKENED, RESULTING IN AN UNSAFE CONDITION. MOHAWK RESOURCES LTD. IS NOT RESPONSIBLE FOR DISTORTIONS WHICH RESULT FROM WELDING ON THIS EQUIPMENT AFTER MANUFACTURING IS COMPLETED. UNAUTHORIZED WELDING, APPLICATION OF HEAT, OR MODIFICATION OF THIS EQUIPMENT VOIDS ANY AND / OR ALL APPLICABLE WARRANTIES COVERING THIS EQUIPMENT.

ALL WARRANTIES APPLICABLE TO THIS EQUIPMENT ARE CONTINGENT ON STRICT ADHERENCE TO THE MAINTENANCE SCHEDULES AND PROCEDURES IN THIS MANUAL.

KEEP ALL SHIELDS AND GUARDS IN PLACE. INSURE ALL SAFETY MECHANISMS ARE OPERABLE. KEEP HANDS, FEET, AND CLOTHING AWAY FROM POWER-DRIVEN AND MOVING PARTS.

IMPORTANT

THIS EQUIPMENT MUST BE USED ONLY ON A FLAT AND LEVEL CONCRETE FLOOR WITH SUFFICIENT STRENGTH TO SUPPORT THE VEHICLE AND THE LIFT. SIMPLY STATED, FOR OPTIMUM LEVEL LIFTING, THE EQUIPMENT, AT BEST, CAN LIFT ONLY AS LEVEL AS THE FLOOR ON WHICH IT IS LOCATED... AND SHOULD NOT BE EXPECTED TO COMPENSATE FOR DRASTIC FLOOR SLOPE DIFFERENCES.

DO NOT USE THIS LIFT ON A SECONDARY FLOOR LEVEL OR ON ANY GROUND WITH A BASEMENT BENEATH WITHOUT WRITTEN AUTHORIZATION FROM THE BUILDING ARCHITECT.

DO NOT USE THIS UNIT ON ANY ASPHALT SURFACE.

DO NOT USE THIS UNIT ON EXPANSION SEAMS OR ON CRACKED, DEFECTIVE CONCRETE. CHECK WITH BUILDING ARCHITECT.

GENERAL WARNINGS, CONTINUED

THE EQUIPMENT DESCRIBED IN THIS MANUAL COULD BE POTENTIALLY DANGEROUS IF IMPROPERLY OR CARELESSLY OPERATED. FOR THE PROTECTION OF ALL PERSONS AND EQUIPMENT, ONLY COMPETENTLY TRAINED OPERATORS WHO ARE CRITICALLY AWARE OF THE PROPER OPERATING PROCEDURES, POTENTIAL DANGERS, AND SPECIFIC APPLICATION OF THIS EQUIPMENT SHOULD BE ALLOWED TO TOUCH THE CONTROLS AT ANY TIME.

SAFE OPERATION OF THIS EQUIPMENT IS DEPENDENT ON USE IN COMPLIANCE WITH THE OPERATION PROCEDURES OUTLINED IN THIS MANUAL ALONG WITH THE MAINTENANCE AND INSPECTION PROCEDURES WITH CONSIDERATION OF PREVAILING CONDITIONS.

THE EQUIPMENT DESCRIBED IN THIS MANUAL IS NEITHER DESIGNED NOR INTENDED FOR ANY APPLICATION ALONE OR IN CONJUNCTION WITH ANY OTHER EQUIPMENT THAT INVOLVES THE LIFTING OR MOVING OF PERSONS.

AFTER LIFTING THE VEHICLE TO THE DESIRED HEIGHT, ALWAYS LOWER THE UNIT ONTO THE MECHANICAL SAFETIES. THE FORMING OF GOOD OPERATIONAL WORK HABITS WILL ELIMINATE OVERSIGHTS IN THE USE OF PROVIDED SAFETY DEVICES.

AIR MOTOR WARNINGS:

ENSURE THAT INCOMING AIR SUPPLY IS FILTERED, REGULATED AND LUBRICATED PRIOR TO SUPPLY TO LIFT. FAILURE TO DO THIS WILL SIGNIFICANTLY REDUCE THE LIFE OF THE AIR MOTOR AND OTHER PNEUMATIC COMPONENTS OF THIS LIFT.

DO NOT USE AIR MOTOR WITH FLAMMABLE OR EXPLOSIVE GASES OR OPERATE THE UNIT IN AN ATMOSPHERE CONTAINING THEM.

THE AIR MOTOR IS DESIGNED FOR AIR ONLY. DO NOT ALLOW CORROSIVE GASES OR PARTICULATE MATERIAL TO ENTER THE MOTOR. WATER VAPOR, OIL-BASED CONTAMINANTS, OR OTHER LIQUIDS MUST BE FILTERED OUT.

AMBIENT TEMPERATURE OF AIR MOTOR NOT TO EXCEED 250 DEG F.

FOR LUBRICATION, USE A DETERGENT SAE #10 AUTOMOTIVE ENGINE OIL ONLY. THE LUBRICATOR SHOULD BE ADJUSTED TO FEED ONE DROP OF OIL FOR EVERY 50-75 CFM OF AIR GOING THROUGH THE MOTOR. LUBRICATION IS NECESSARY FOR ALL INTERNAL MOVING PARTS AND RUST PREVENTION. EXCESSIVE MOISTURE IN THE AIR LINE CAN CAUSE RUST FORMATION IN THE MOTOR AND MIGHT ALSO CAUSE ICE TO FORM IN THE MUFFLER DUE TO EXPANSION OF AIR THROUGH THE MOTOR. THE MOISTURE PROBLEM CAN BE CORRECTED BY INSTALLING A MOISTURE SEPARATOR IN THE LINE AND ALSO BY INSTALLING AN AFTERCOOLER BETWEEN THE COMPRESSOR AND AIR RECEIVER.

SOLID OR LIQUID MATERIAL EXITING THE UNIT CAN CAUSE EYE OR SKIN DAMAGE. KEEP AWAY FROM AIR STREAM.

ALWAYS DISCONNECT THE AIR SUPPLY BEFORE SERVICING.

HEARING PROTECTION SHOULD BE WORN WHEN IN CLOSE PROXIMITY TO THE AIR MOTOR WHEN IT IS RUNNING.

TL-36 GENERAL PART LIST

PACKED	QTY	PART NUMBER	DESCRIPTION
	1	XXX-XXX-XXX	MAINSIDE LEG / POST ASSEMBLY
	1	XXX-XXX-XXX	OFFSIDE POST ASSEMBLY
	REF	XXX-XXX-XXX	LEG WELDMENT
	REF	XXX-XXX-XXX	CARRIAGE WELDMENT
	REF	XXX-XXX-XXX	POWER UNIT ASSEMBLY
	REF	XXX-XXX-XXX	CYLINDER ASSEMBLY
	1	XXX-XXX-XXX	MANUAL / INSTALLATION (TL-36)
	1	601-800-070	WARRANTY REGISTRATION CARD PACKAGE
PACKED BY:			

UNPACKING AND SETUP INSTRUCTIONS

IMPORTANT

READ THIS MANUAL IN ITS ENTIRETY. BE FAMILIAR WITH PART NAMES AND HAVE A GOOD UNDERSTANDING OF HOW THIS UNIT IS TO BE ASSEMBLED AND OF HOW INDIVIDUAL PARTS OPERATE.

UNPACKING

- ◆ REMOVE SHIPPING BEAMS AND SEPARATE POSTS.

LOWER COMPLETELY WHEN DONE. SEE LIFTING INSTRUCTIONS.

SETUP

- ◆ CONNECT HYDRAULIC LINES FROM MAINSIDE TO OFFSIDE POST WITH QUICK CONNECTION FITTINGS.
- ◆ CONNECT PNEUMATIC LINES FROM MAINSIDE TO OFFSIDE POST
- ◆ FOR A LIFT WITH AN AIR/HYDRAULIC MOTOR, CONNECT INCOMING AIR LINE TO MAINSIDE POST. CONNECT TO AIR VALVE AT "P" PORT ON POWER UNIT. ENSURE THAT INCOMING AIR LINE IS 3/8" ID MINIMUM WITH 90 PSI AIR SUPPLY.

CHECK LIFTING AREA

CHECK AREA WHERE LIFTING IS TO BE DONE. ENSURE A FLAT LEVEL CONCRETE FLOOR WITH PROPER CLEARANCES SURROUNDING THE LIFT. ENSURE ALL DEBRIS AND PERSONAL HAVE BEEN REMOVED FROM THE LIFTING AREA. SEE WARNINGS ON PREVIOUS PAGES.

PLACEMENT OF VEHICLE ON LIFT

PLACE VEHICLE IN THE AREA WHERE IT IS TO BE LIFTED AND PUT THE VEHICLE IN PARK

POSITION THE CRADLE OF EACH POST UNDER EACH TIRE OF A SET OF FRONT TIRES OR BACK TIRES ONLY.

IMPORTANT

ENSURE THAT INCOMING AIR SUPPLY IS FILTERED, REGULATED AND LUBRICATED PRIOR TO SUPPLY TO LIFT. FAILURE TO DO THIS WILL SIGNIFICANTLY REDUCE THE LIFE OF THE AIR MOTOR AND OTHER PNEUMATIC COMPONENTS OF THIS LIFT.

ENSURE THAT THE CRADLES WILL LIFT TO SUPPORT THE TIRE AND NOT CONTACT THE FRAME OR BODY OF THE VEHICLE WHEN LIFTING. FRAME ADAPTORS MAY NEED TO BE USED TO ACCOMPLISH THIS.

ENSURE THAT THE LIFTED END OF THE VEHICLE DOES NOT EXCEED THE LIFTING CAPACITY OF THIS LIFT. NOTE THAT ALMOST EVERY VEHICLE HAS A HEAVY AND LIGHT END. TAKE THIS INTO ACCOUNT WHEN LIFTING.

AFTER CRADLE ARMS ARE POSITIONED AROUND A SET OF TIRES, **PLACE VEHICLE IN NEUTRAL.**

- ◆ FOR A LIFT WITH AN ELECTRIC/HYDRAULIC MOTOR, CONNECT POWER SUPPLY TO LIFT MOTOR. SEE POWER UNIT SPECIFICATION SECTION. HAVE A QUALIFIED ELECTRICIAN SUPPLY AND CONNECT POWER TO THIS LIFT.
- ◆ ENSURE THAT ALL HYDRAULIC LINES ARE TIGHT AND DO NOT LEAK.
- ◆ CYCLE THE LIFT ONCE BEFORE LOADING TO ENSURE THAT THE LIFTING MECHANISM AND LOCK MECHANISMS WORK PROPERLY.

WARNING

FAILURE TO PLACE VEHICLE IN NEUTRAL BEFORE LIFTING MAY INDUCE SIDE LOADS INTO LIFTING POSTS AND CAUSE THEM TO TILT. THIS COULD BE POTENTIALLY DANGEROUS.

LIFTING INSTRUCTIONS

ONLY AFTER THE LIFT IS SETUP PROPERLY AND THE VEHICLE POSITIONED PROPERLY ON THE LIFT SHOULD THE VEHICLE BE RAISED.

LIFT CONTROLS

TO RAISE THE CRADLE ARMS OF THE POSTS, PULL THE AIR VALVE HANDLE UP OR PRESS THE UP BUTTON.

TO LOWER THE CRADLE ARMS OF THE POSTS, PULL THE AIR VALVE HANDLE DOWN OR PRESS THE DOWN BUTTON.

TO STOP THE CRADLE ARMS OF THE POSTS, SET THE AIR VALVE HANDLE IN THE NEUTRAL POSITION OR RELEASE THE UP/DOWN BUTTONS.

SAFETY TIPS

PLEASE POST THE SAFETY TIPS (COPY IN PARTS BOX) IN A PLACE WHERE THE OPERATOR WILL BE CONSTANTLY REMINDED OF THEIR IMPORTANCE. ALWAYS REFER TO THE LIFTS SPECIFIC SAFETY, OPERATING AND MAINTENANCE INSTRUCTIONS.

- OPERATING VALVES, SWITCHES, AND LOCKING DEVICES ARE DESIGNED FOR MAXIMUM SAFETY. NEVER ATTEMPT TO BLOCK OR OVERRIDE THEM.
- NEVER OVERLOAD YOUR LIFT BEYOND STATED LIFTING CAPACITY.
- DO NOT ALLOW CUSTOMERS OR BY-STANDERS TO OPERATE THE LIFT OR TO BE IN A LIFTING AREA DURING ITS OPERATION. ONLY PROPERLY TRAINED PERSONNEL SHOULD BE ALLOWED TO OPERATE LIFT.
- NEVER RAISE VEHICLE WITH ANYONE INSIDE IT.
- BE SURE WORK AREA AROUND THE LIFT IS CLEAR AND FREE OF OBSTRUCTIONS. (DEBRIS, GREASE, OIL)
- NEVER ATTEMPT TO OPERATE A LIFT IF IT APPEARS TO BE MALFUNCTIONING OR IF BROKEN OR DAMAGED PARTS ARE EVIDENT.
- FULLY LOWER THE UNIT BEFORE LOADING OR UNLOADING A VEHICLE.
- LOAD LIFT CAREFULLY. AVOID QUICK STOPS AND STARTS.
- PERFORM THE PRE-OPERATION CHECK LIST, PER INSTRUCTIONS, BEFORE RAISING VEHICLE TO DESIRED HEIGHT.
- BEFORE REMOVING VEHICLE FROM THE LIFT AREA, REMOVE THE WHEEL CHOCKS TO ASSURE THAT VEHICLE OR LIFT WILL NOT BE DAMAGED.

PRE OPERATION CHECK LIST

TRAINED OPERATOR

- THE OPERATOR MUST BE FULLY TRAINED AND QUALIFIED TO SAFELY AND EFFECTIVELY OPERATE THIS EQUIPMENT OF THIS SPECIFIC MAKE AND MODEL.

ABSENCE OF OBSTRUCTIONS

- THE TOTAL WORK AREA MUST BE FREE OF ANY AND ALL OBSTRUCTIONS AND BE GENERALLY CLEAN. (FREE OF OIL AND DEBRIS)

VISUAL INSPECTION

- THOROUGHLY INSPECT THE UNIT WITH A TRAINED EYE, NOTING ANY PROBABLE PROBLEM AREA. INSPECT THE FLOOR AND THE ANCHORING FASTENERS AS WELL. REPORT ANY QUESTIONABLE ITEMS.

NO LOAD PERFORMANCE CHECK

- ALL MECHANICAL SAFETIES OPERATE PROPERLY AND CONSISTENTLY.
- NO EXTERNAL FLUID LEAKS.
- NO BLEED DOWN.
- EFFORTLESS AND SIMULTANEOUS MOVEMENT.
- LEVEL LIFTING.
- CONTROLS FUNCTION PROPERLY.
- ALL SAFETY MECHANISMS FULLY FUNCTIONAL.

PREVIOUS DAY' S OPERATION REPORT

- VERIFY WITH SUPERVISOR THAT THERE WERE NO PROBLEMS EXPERIENCED DURING THE PREVIOUS DAY'S USAGE. IF THERE WERE ANY PROBLEMS, VERIFY THAT ALL NECESSARY REPAIRS HAVE BEEN COMPLETED.

MAINTENANCE PROCEDURES

DAILY

- PERFORM PRE-OPERATION CHECK LIST.
- REPORT ANY AND ALL EQUIPMENT MALFUNCTIONS IMMEDIATELY.
- CLEAN AND LUBRICATE ALL MOVING PARTS.
- KEEP AREA AROUND THIS EQUIPMENT FREE OF DIRT, SAND, WATER, ETC.

WEEKLY

- WIPE CLEAN, THE CYLINDERS WIPER SEALS AND THE BASE OF EACH POST TO REMOVE WEEPING OIL AND DUST.
- VERIFY FLUID LEVEL. WITH UNIT FULLY LOWERED, LEVEL INDICATOR ON RESERVOIR IS TO READ FULL. USE DEXRON III AS REPLACEMENT FLUID.

MONTHLY

- INSPECT ALL HYDRAULIC COMPONENTS FOR LEAKS, AND DEFORMATION DUE TO WEAR OR CORROSION.
- TIGHTEN ALL FASTENERS AND HYDRAULIC FITTINGS.

SEMI- ANNUAL TRAINING

- RE QUALIFY ALL PERSONNEL IN THE SAFE OPERATION OF THIS UNIT.

ANNUALLY

- REPLACE AND RE-BLEED THE HYDRAULIC FLUID. ALWAYS USE A CLEAN FUNNEL AND FILTER.
- REPLACE HYDRAULIC FLUID FILTER ELEMENT.
- INSPECT ALL CARRIAGE SLIDE BLOCKS FOR UNUSUAL OR EXCESSIVE WEAR.
- PERFORM THE DAILY, WEEKLY, AND MONTHLY MAINTENANCE.
- INSPECT LOCKS TO ENSURE THEY FUNCTION PROPERLY.

TROUBLE SHOOTING CHART

WARNING: NEVER ATTEMPT TO LOOSEN HYDRAULIC FITTINGS, OR OVERRIDE SAFETY DEVICES IN AN ATTEMPT TO CORRECT A PROBLEM. ALL SERVICES ARE TO BE PERFORMED WITH **NO** VEHICLE ON THE UNIT.

POSSIBLE CAUSE	SOLUTION
NOT RAISING LOAD	
LOCK RELEASE BUTTON NOT ENGAGED	DEPRESS LOCK RELEASE BUTTON. RAISE SLIGHTLY AND THEN LOWER.
LOW HYDRAULIC FLUID	LOWER UNIT COMPLETELY. VERIFY PROPER FLUID LEVEL.
PRESSURE RELIEF ADJUSTMENT	REFER TO POWER UNIT SPECIFICATIONS.
UNIT OVERLOADED	VEHICLE TOO HEAVY TO BE RAISED.
WRONG ROTATION OF MOTOR	ENSURE INPUT PRESSURE LINE ATTACHED TO "P" PORT ON VALVE FOR AIR/HYDRAULIC MOTOR.
DEFECTIVE ELECTRIC MOTOR	CHECK ALL OTHER ITEMS THAT MAY AFFECT MOTOR PERFORMANCE. IF NOTHING APPLIES, SERVICE MOTOR.
WRONG SUPPLY POWER TO ELECTRIC MOTOR	CHECK FOR PROPER VOLTAGE AND PHASE TO MOTOR. CHECK WIRING TO MOTOR AND CONTROLS.
INSUFFICIENT SHOP AIR	ENSURE INPUT AIR LINE IS 3/8" ID WITH 90 PSI MINIMUM PRESSURE
NOT LOWERING	
LOCKS ENGAGED	DEPRESS LOCK RELEASE BUTTON. RAISE SLIGHTLY AND THEN LOWER.
NO AIR SUPPLY PRESENT FOR LOCK RELEASE	ENSURE 90 PSI AIR SUPPLY
OBSTRUCTION UNDER UNIT OR VEHICLE	REMOVE OBSTRUCTION.

MODEL TL-36

SERIAL NUMBER: _____

DATE OF INSTALLATION: _____

SERVICE CHART

DATE	PART REPLACED / SERVICED	SERVICED BY

MAINTENANCE CHART

DATE	PART REPLACED / SERVICED	SERVICED BY

MOHAWK

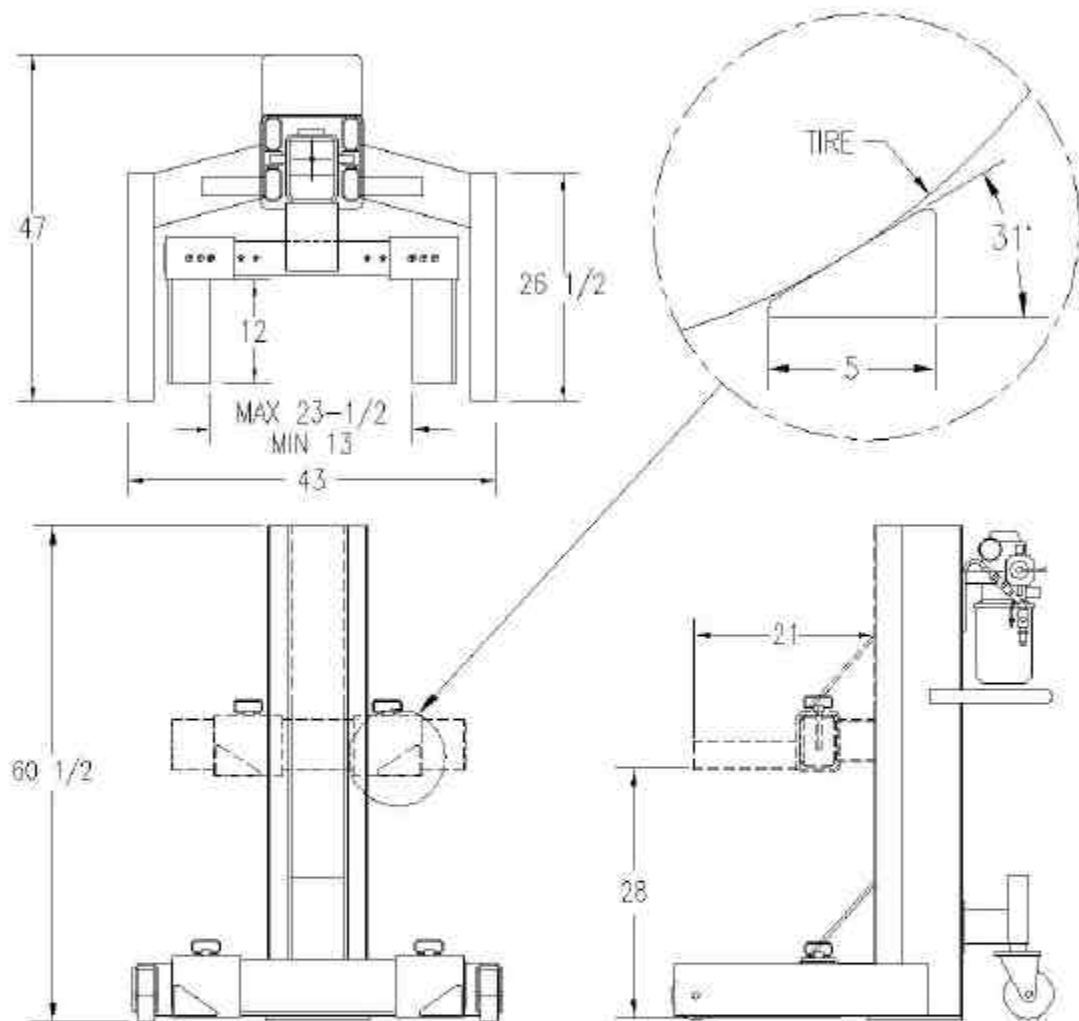


MADE IN THE U.S.A.

MODEL TL-36 FIGURES & DIAGRAMS AIR/HYDRAULIC POWER UNIT

MOBILE TRUCK LIFT

MODEL: TL-36



CAPACITY PER COLUMN - 18,000 lbs

LIFTING HEIGHT UP TO 28"

AIR/HYDRAULIC SYSTEM

AIR PRESSURE REQUIRED 90 PSI

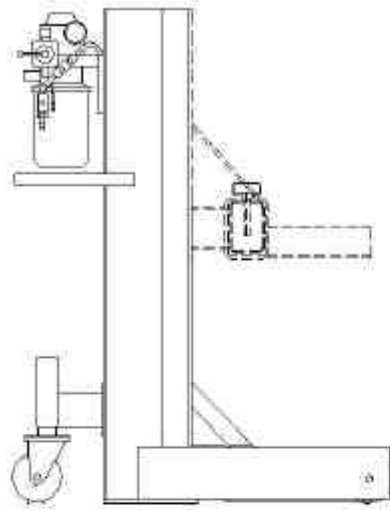
AUTOMATIC MULTI-POSITION MECHANICAL LOCK

SPRING LOADED THIRD WHEEL

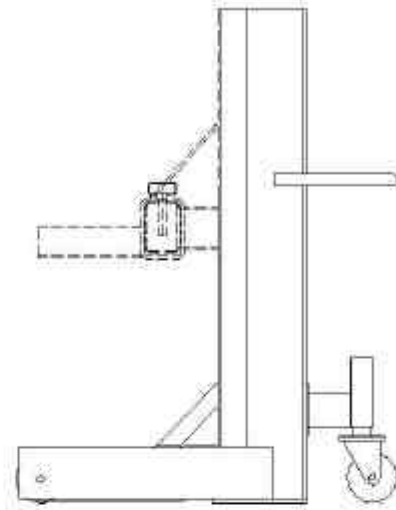
COLUMN WEIGHT 595LBS

ADJUSTABLE FORKS, TIRES 20" TO 48" DIAMETER

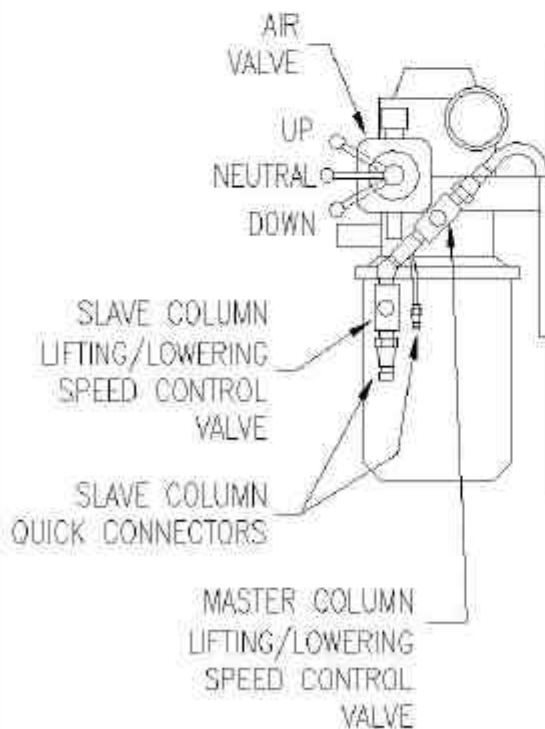
TWO COLUMN SYSTEM CAPACITY: 36,000 LBS



MASTER COLUMN



SLAVE COLUMN



UNPACKING AND SET-UP

- REMOVE SHIPPING BEAMS
- CONNECT AIR VALVE TO 90 PSI AIR SUPPLY
(CONNECT MINIMUM 3/8 ID HOSE
TO 1/2 NPT "P" PORT ON AIR VALVE)
- IF NECESSARY, CONNECT SLAVE COLUMN HOSES
TO MASTER COLUMN WITH QUICK CONNECTORS

OPERATION

- BE SURE THAT THE FLOOR IS STRONG ENOUGH
TO SUPPORT THE LIFT BEFORE OPERATING.
- PUSH THE CRADLE OF THE LIFT UNDER EACH TIRE.
- TO RISE THE CRADLE PULL AIR VALVE HANDLE UP.
- TO LOWER THE CRADLE PULL AIR VALVE HANDLE DOWN.
- TO STOP THE CRADLE SET AIR VALVE HANDLE ON
NEUTRAL POSITION.

MOHAWK

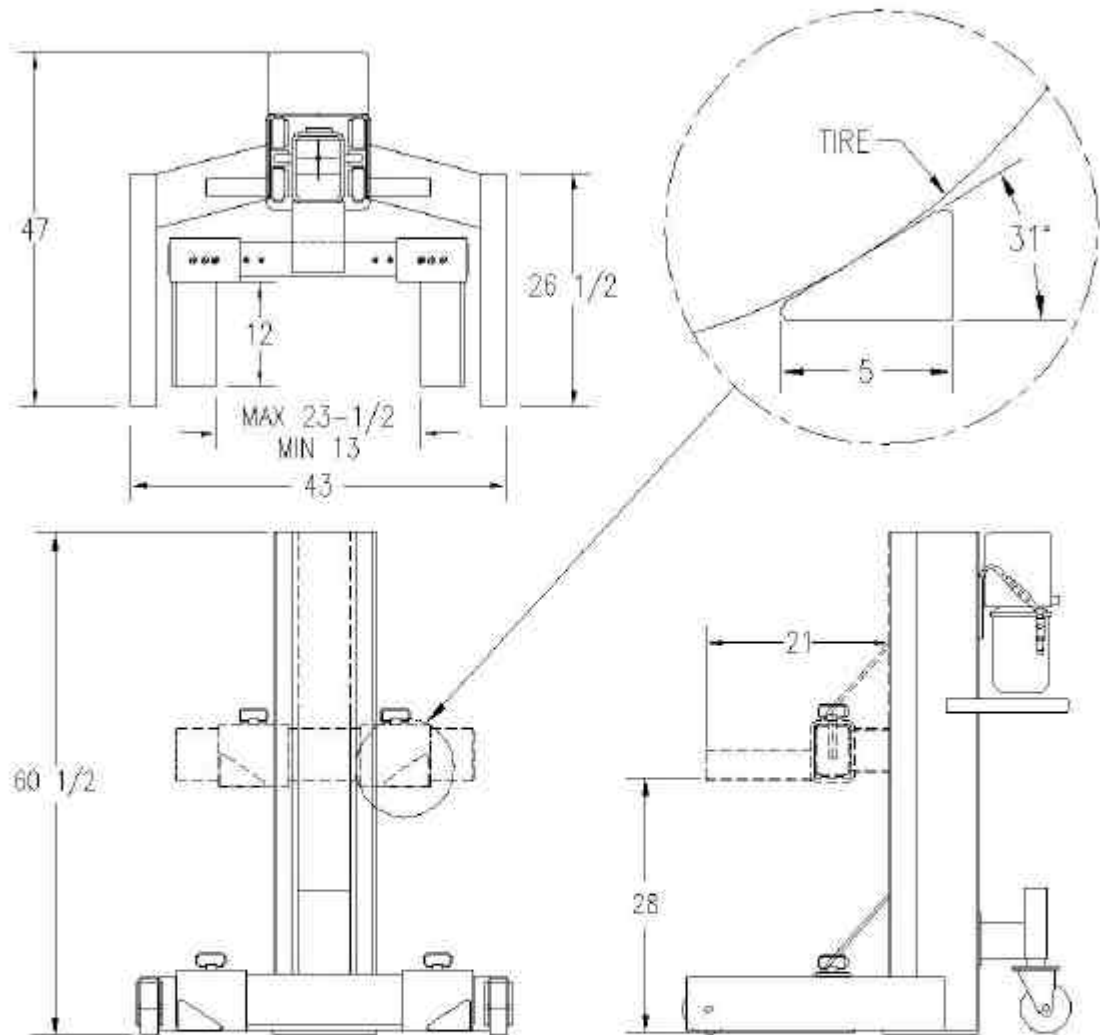


MADE IN THE U.S.A.

MODEL TL-36 FIGURES & DIAGRAMS ELECTRIC/HYDRAULIC POWER UNIT

MOBILE TRUCK LIFT

MODEL: TL-36



CAPACITY PER COLUMN - 18,000 lbs

LIFTING HEIGHT UP TO 28"

AIR/HYDRAULIC SYSTEM

AIR PRESSURE REQUIRED 90 PSI

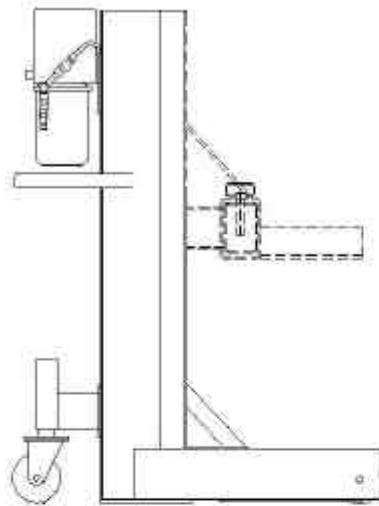
AUTOMATIC MULTI-POSITION MECHANICAL LOCK

SPRING LOADED THIRD WHEEL

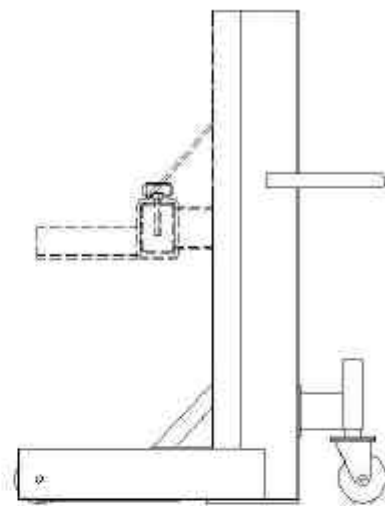
COLUMN WEIGHT 595LBS

ADJUSTABLE FORKS, TIRES 20" TO 48" DIAMETER

TWO COLUMN SYSTEM CAPACITY: 36,000 LBS

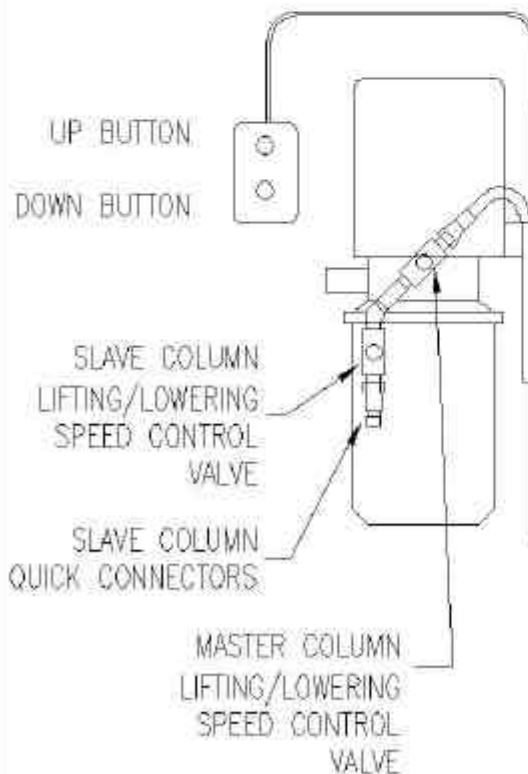


MASTER COLUMN



SLAVE COLUMN

OPTIONAL: PENDANT CONTROL

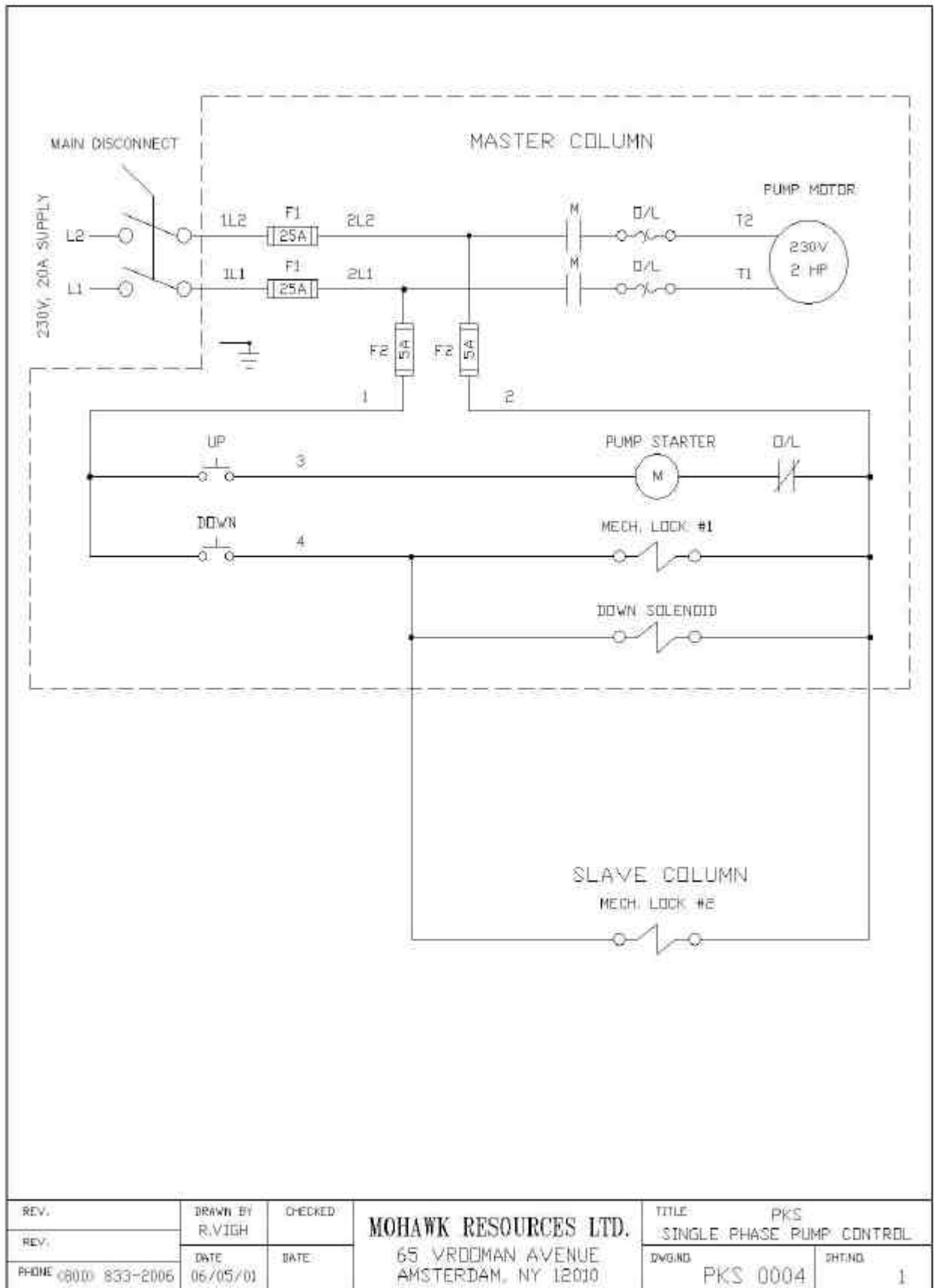


UNPACKING AND SET-UP

- REMOVE SHIPPING BEAMS
- CONNECT PLUG TO WALL CONNECTOR
(POWER SUPPLY - 110 V, 20 AMPS)
- IF NECESSARY, CONNECT SLAVE COLUMN HOSES
TO MASTER COLUMN WITH QUICK CONNECTORS

OPERATION

- BE SURE THAT THE FLOOR IS STRONG ENOUGH
TO SUPPORT THE LIFT BEFORE OPERATING.
- PUSH THE CRADLE OF THE LIFT UNDER EACH TIRE.
- TO RISE THE CRADLE PUSH UP BUTTON
- TO LOWER THE CRADLE PUSH DOWN BUTTON
- TO STOP THE CRADLE RELEASE UP/DOWN BUTTON



MOBILE TRUCK LIFT MODEL: TL-36

ELECTRIC DIAGRAM

