

# MOHAWK

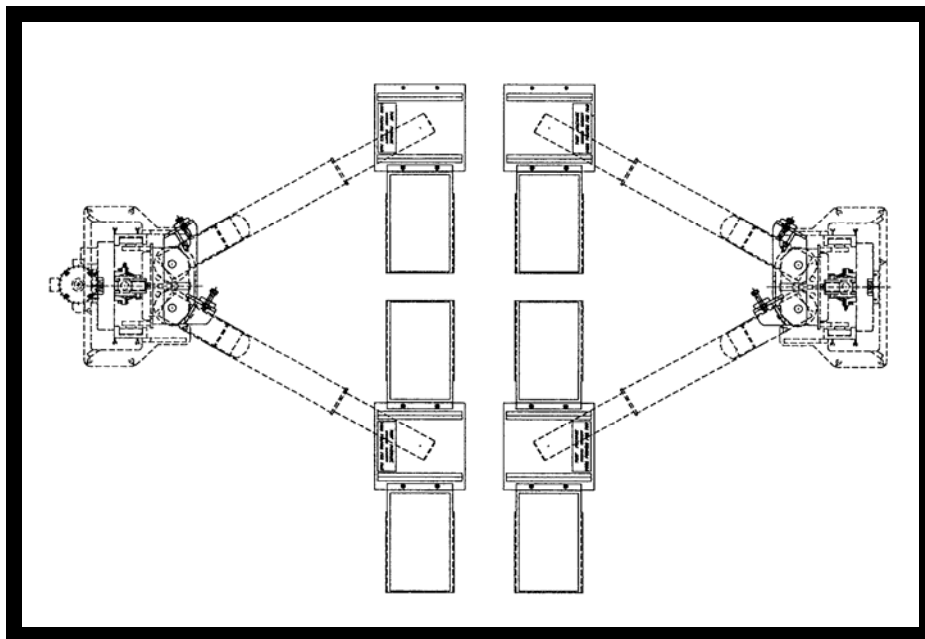


**MADE IN THE USA**

## TURF PACKAGE

**OPTION EQUIPMENT MANUAL  
MODELS**

**SYSTEM-I / SYSTEM-IA / LMF-12 / TP-15**



### **MOHAWK RESOURCES LTD.**

**MOHAWK INDUSTRIAL PARK**  
65 VROOMAN AVE. P.O. BOX 110  
AMSTERDAM, NY 12010

**TOLL FREE :** 1-800-833-2006

**LOCAL :** 1-518-842-1431

**FAX :** 1-518-842-1289

**INTERNET:** [www.MOHAWKLIFTS.com](http://www.MOHAWKLIFTS.com)

**E-MAIL:** [service@MOHAWKLIFTS.com](mailto:service@MOHAWKLIFTS.com)



## TURF PACKAGE

### SET-UP INSTRUCTIONS

#### WARNING

USE OF THE TURF PACKAGE DECREASES THE  
LIFTING CAPACITY TO 4000 LBS. TOTAL ( **1000 LBS. PER ARM.** )

#### SET-UP WITH TURF PACKAGE

PLACE THE ADJUSTMENT PLATE TO THE  
ENGAGED POSITION AND TIGHTEN.

PLACE THE SWING ARM IN THE DESIRED  
POSITION.

USING THE ADJUSTMENT BOLTS ON THE  
PLATE (BOTTOM BOLT) SCREW ADJUSTMENT  
BOLT UNTIL CONTACT IS MADE WITH THE  
SWING ARM.

SECURE THE BOLT INTO PLACE USING THE  
3/4" JAM NUT.

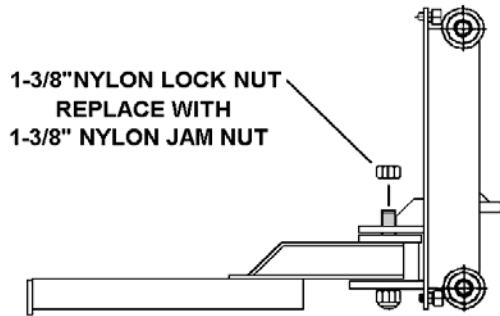
#### STANDARD LIFT OPERATION

PLACE THE ADJUSTMENT PLATE TO THE  
NEUTRAL POSITION AND TIGHTEN.

REMOVE THE TURF RAMPS AND LIFT  
PLATFORM WELDMENTS. REPLACE THESE  
ITEMS WITH THE LIFTING PADS.

## INSTALLATION INSTRUCTIONS

REMOVE THE FOUR 1-3/8" NYLON LOCK NUTS FROM THE SWING ARM STUDS. ( TOP SIDE ) THESE WILL BE REPLACED BY THE FOUR 1-3/8" JAM NUT. **Figure 1**



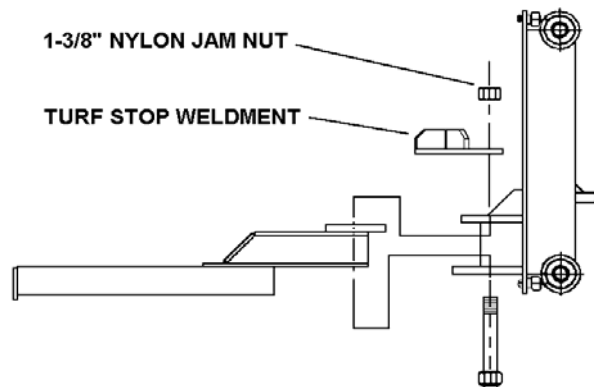
**Figure 1**

PLACE THE LEFT & RIGHT TURF STOP WELDMENTS INTO PLACE ON THE CARRIAGES.

### NOTE

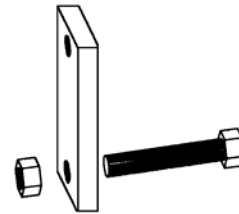
THE TURF STOP WELDMENT ORIENTATION IS DETERMINED BY THE APPROACH OF THE VEHICLE BEING LOADED ONTO THE UNIT. **Figure 4**

USING THE FOUR 1-3/8" NYLON JAM NUTS, ASSEMBLE THE TURF STOP WELDMENTS TO THE CARRIAGES. **Figure 2**



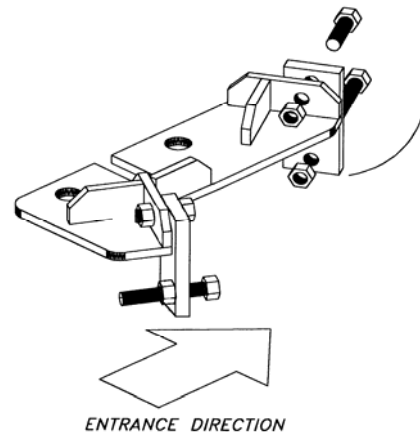
**Figure 2**

ASSEMBLE THE FOUR 3/4 X 4-1/2 IN BOLTS (MACHINED), INTO THE THREADED HOLE IN THE ADJUSTMENT PLATE. ASSEMBLE JAM NUT ONTO THE BOLT. **Figure 3**



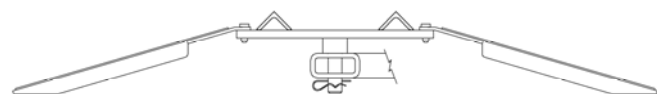
**Figure 3**

USING THE FOUR 3/4 X 2-1/2 IN BOLTS & NUTS, ASSEMBLE THE FOUR ADJUSTMENT PLATE ASSEMBLIES TO THE TURF STOP WELDMENTS. POSITION THE ADJUSTMENT PLATES TO THE NEUTRAL POSITION. ( UP ) **Figure 4**



**Figure 4**

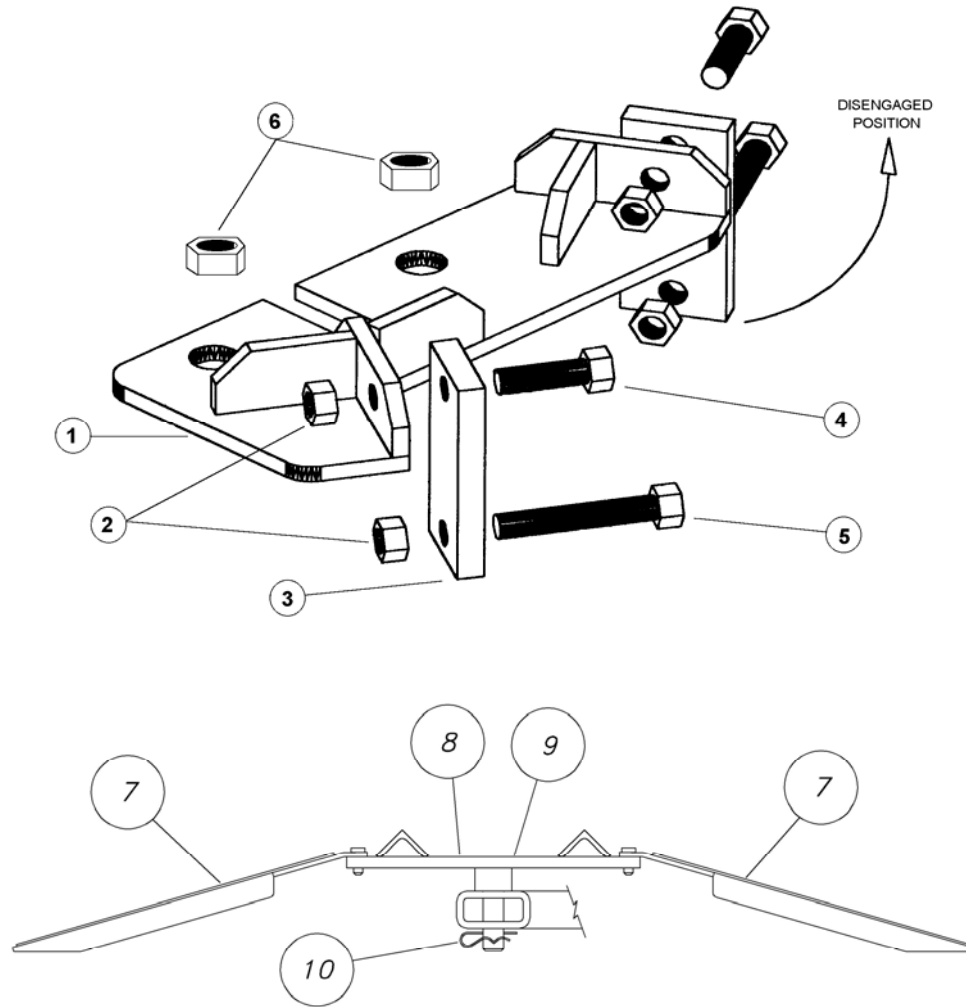
REMOVE THE LIFTING PADS FROM THE SLIDER. PLACE THE FOUR LIFT PLATFORMS INTO PLACE AT THE END OF EACH SLIDER ON THE LIFT. NOTING APPROACH DIRECTION, PLACE THE SIX APPROACH RAMPS INTO PLACE ON THE LIFT PLATFORMS. **Figure 5**



**Figure 5**

# TURF PACKAGE

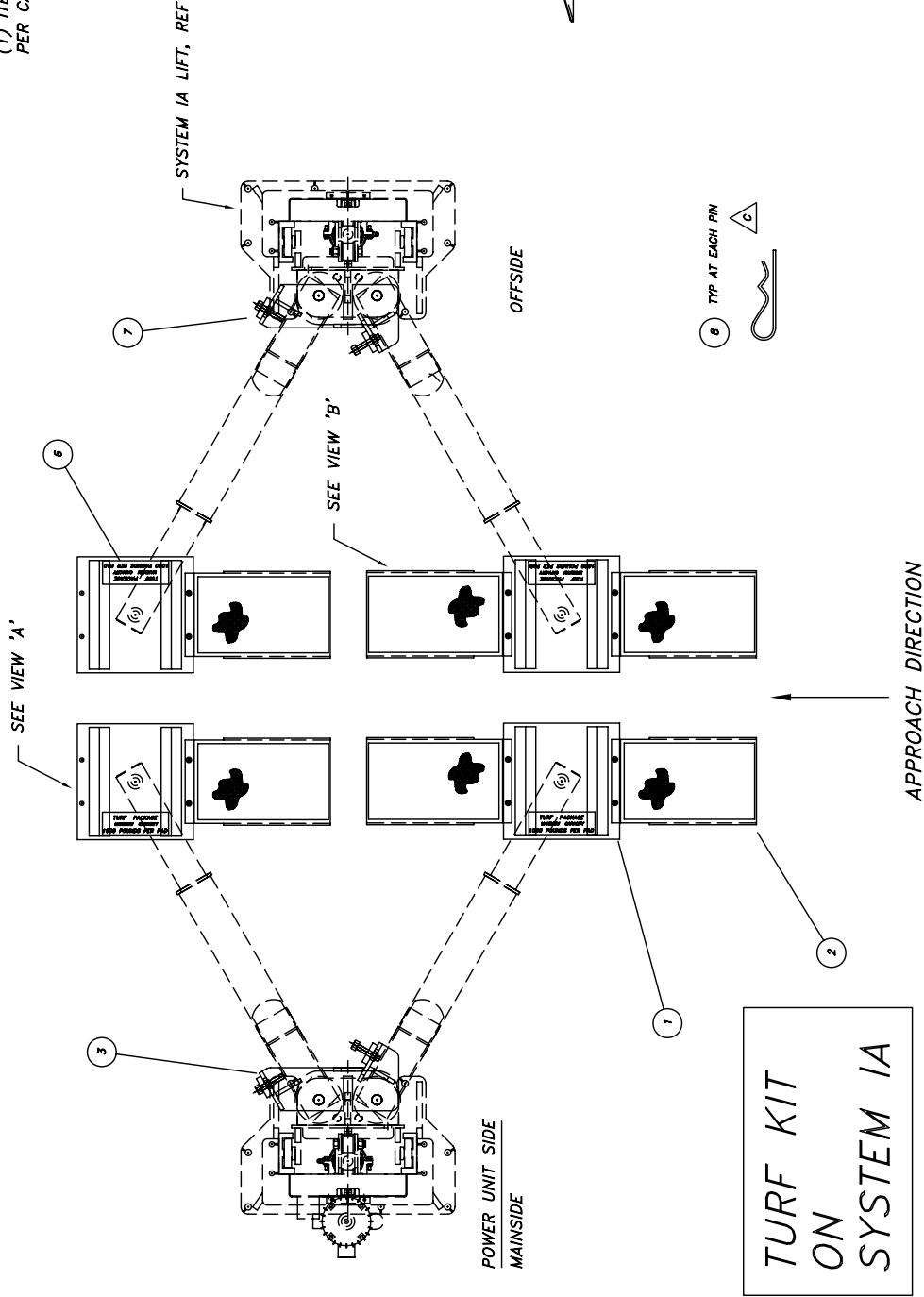
## PARTS LIST



ITEM #	PART #	DESCRIPTION	QTY
1	009-011-037	TURF STOP WELDMENT ( MAINSIDE )	1
1	009-011-038	TURF STOP WELDMENT (OFFSIDE )	1
2	600-680-005	NUT, PLAIN, 3/4 - 12 NF	8
3	009-011-110	PLATE, ADJUSTMENT,	4
4	600-640-003	BOLT, 3/4 - 16 NF NF X 2-1/2 HHC	4
5	009-011-113	BOLT, 3/4 - 16 NF NF X 4-1/2 HHC ( MACHINED )	4
6	600-690-017	NUT, LOCK, 1-3/8 - 12 NF ( JAM )	4
7	012-011-009	RAMP WELDMENT	6
8	012-011-010	LIFT PLATFORM WELDMENT ( LMF-12 / TP-15 )	4
8	009-011-010	LIFT PLATFORM WELDMENT ( SYSTEM-I / SYSTEM-IA )	4
9	601-800-091	DECAL, 1000 LB MAXIMUM CAPACITY PER ARM	4
10	600-890-005	HAIR PIN, 1/4 DIA	4

REV.	DESCRIPTION	DATE	BY	APPROVED
1	ITEM 1 WAS 009-011-010. ITEM 8 ADDED.	11/03	R.V.	

REMOVE (2) ITEMS 4 & REPLACE  
WITH (2) ITEMS 5 AND INSERT  
(1) ITEM 3 & ITEM 7 INTO POSITION SHOWN,  
PER CARRIAGE



ITEM	PART NUMBER	DESCRIPTION	QTY
8	600-890-005	HAIR PIN, 1/4 DIA	4
7	009-011-036	TURF STOP ASSEMBLY (OFFSIDE)	1
6	601-800-091	MAXIMUM CAPACITY LABEL, 1000#	4
5	600-690-017	NUT, LOCK, 1 3/8-12 NF (JAM)	+4
4	600-690-008	NUT, LOCK, 1 3/8-12 NF	-4
3	009-011-033	TURF STOP ASSEMBLY (MAINSIDE)	1
2	012-011-009	RAMP WELDMENT	6
1	009-011-017	LIFT PLATFORM WELDMENT	4

ITEM	PART NUMBER	DESCRIPTION	QTY
8	600-890-005	HAIR PIN, 1/4 DIA	4
7	009-011-036	TURF STOP ASSEMBLY (OFFSIDE)	1
6	601-800-091	MAXIMUM CAPACITY LABEL, 1000#	4
5	600-690-017	NUT, LOCK, 1 3/8-12 NF (JAM)	+4
4	600-690-008	NUT, LOCK, 1 3/8-12 NF	-4
3	009-011-033	TURF STOP ASSEMBLY (MAINSIDE)	1
2	012-011-009	RAMP WELDMENT	6
1	009-011-017	LIFT PLATFORM WELDMENT	4

ITEM	PART NUMBER	DESCRIPTION	QTY
8	600-890-005	HAIR PIN, 1/4 DIA	4
7	009-011-036	TURF STOP ASSEMBLY (OFFSIDE)	1
6	601-800-091	MAXIMUM CAPACITY LABEL, 1000#	4
5	600-690-017	NUT, LOCK, 1 3/8-12 NF (JAM)	+4
4	600-690-008	NUT, LOCK, 1 3/8-12 NF	-4
3	009-011-033	TURF STOP ASSEMBLY (MAINSIDE)	1
2	012-011-009	RAMP WELDMENT	6
1	009-011-017	LIFT PLATFORM WELDMENT	4

