

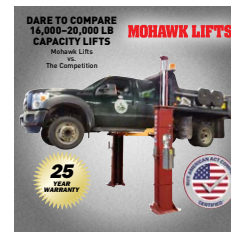
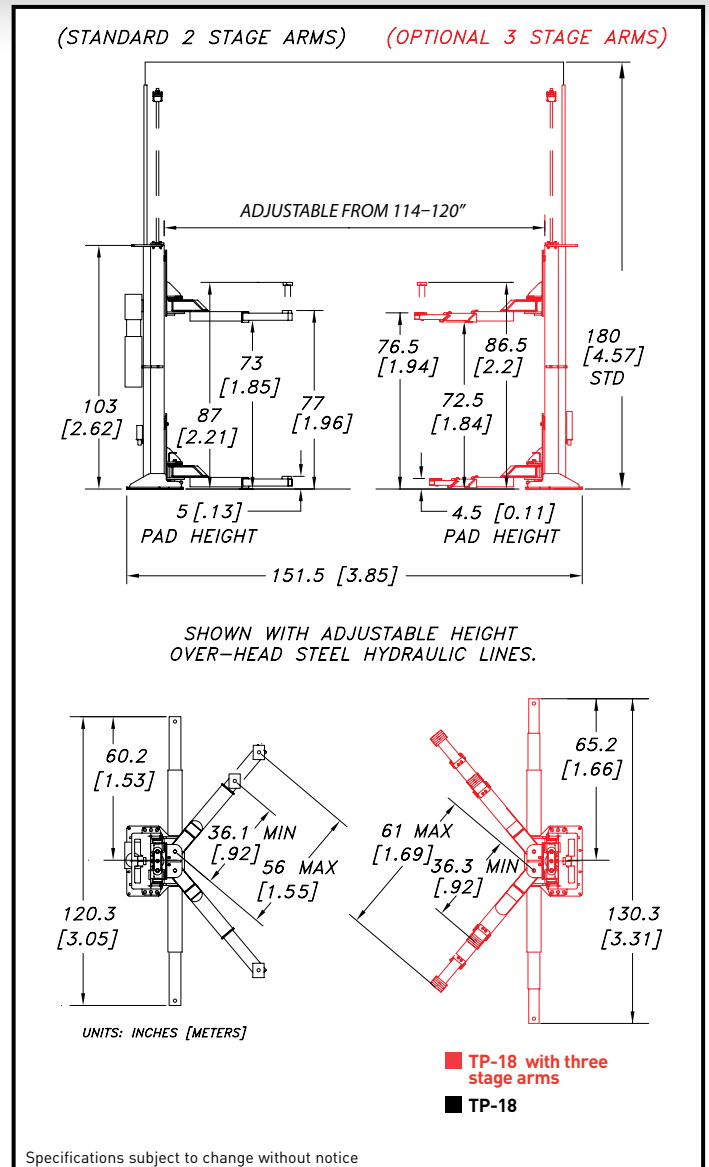
# MODELS TP-18 & TP-18-3SA SPECIFICATIONS

<b>Model:</b>	<b>TP-18</b>
<b>Capacity:</b>	18,000 lbs. (8164.66 Kg)
<b>Lifting Speed:</b>	60 seconds (faster with lighter load)
<b>Motor Rating:</b>	4 HP/208-230V, Single-phase (3ø optional)
<b>Synchronization:</b>	Hydraulic fluid displacement using no chains, cables, or overhead obstructions
<b>Arm Pad Height:</b>	5" (12.7 cm) min.
<b>Lifting Height:</b>	6' (1.83 m) under arm
<b>Arm Pad Height @ Full Rise:</b>	6'5" (1.96 m)
<b>Max. Arm Pad Height with Adaptors:</b>	7'3" (2.21 m)
<b>Overall Width:</b>	12' 7½" (3.85 m) (adjustable)
<b>Width Between Posts:</b>	10' (3.05 m) (adjustable 114-120")
<b>Width Between Lifting Arms:</b>	8' 9" (2.69 m) (adjustable)
<b>Column Height:</b>	8' 7" (2.62 m)
<b>Max. Cylinder Height:</b>	13'6" (4.11 m)
<b>Overhead Hydraulic Line Height:</b>	15' (4.57 m) Standard (adjustable to accommodate any height ceiling or routed in-floor)
<b>Weight:</b>	3900 lbs. (1769.01 Kg)
<b>Concrete Floor Requirements:</b>	<b>Wide Base:</b> 5½" of 4,000 psi concrete <b>Standard Base:</b> 6½" of 4,000 psi concrete
<b>Anchoring System: Included</b>	(16) ¾"x6" (1.91x15.24 cm) bolts
<b>Mechanical Safety Locks:</b>	<b>Automatic;</b> multi-position starting @ 5" (12.7 cm) off the floor
<b>Hydraulic Safety Systems:</b>	<b>Automatic;</b> all position
<b>Swing Arm Restraints:</b>	<b>Automatic</b> upon ascent
<b>Cylinders:</b>	2 (1 per column)
<b>Drive System:</b>	Direct drive (using no cables or chains)
<b>5" Frame Adaptors (stackable):</b>	4 included as standard equipment
<b>7½" Frame Adaptors (stackable):</b>	4 included as standard equipment
<b>10" Frame Adaptors (stackable):</b>	4 included as standard equipment
<b>Steel Carriage Bearings:</b>	(16) 4" (10.16 cm) diameter (8 per carriage) double sealed, self-lubricating ball bearing rollers
<b>Floor Access Between Posts:</b>	Clear and unobstructed
<b>Warranty:</b>	<b>25 years structural, 10 year mechanical, plus limited lifetime cylinder seal warranty</b>

Mohawk builds the best products with the finest materials, to the highest standards. Just compare our lifts. Our staff will assist you with a fleet evaluation, design assistance and answer any technical questions you have. We invite your calls.

Mohawk lifts are manufactured in compliance with the following standards: ALI, ANSI, ASME, AISI, ASTM, ASA, NEC, AWG, NEMA.

**MEETS CURRENT NATIONAL ANSI (ANSI/ALI ALCTV) CODE FOR LIFTS.**



**Learn how our two post vehicle lifts compare to the competition.**  
[mohawklifts.com/dare2compare](http://mohawklifts.com/dare2compare)

**MOHAWK LIFTS**

Mohawk Lifts, LLC.  
P.O. Box 110  
65 Vrooman Ave  
Amsterdam, NY 12010  
(800) 833-2006  
(518) 842-1431  
FAX: (518) 842-1289  
[www.mohawklifts.com](http://www.mohawklifts.com)

AVAILABLE UNDER DISCOUNTED GOVERNMENT  
CONTRACT IN ALL 50 STATES



Contract Holder  
Contract # GS-DTF-207AA



ValuePoint  
SUPPLIER PARTNER



**DISTRIBUTED BY:**