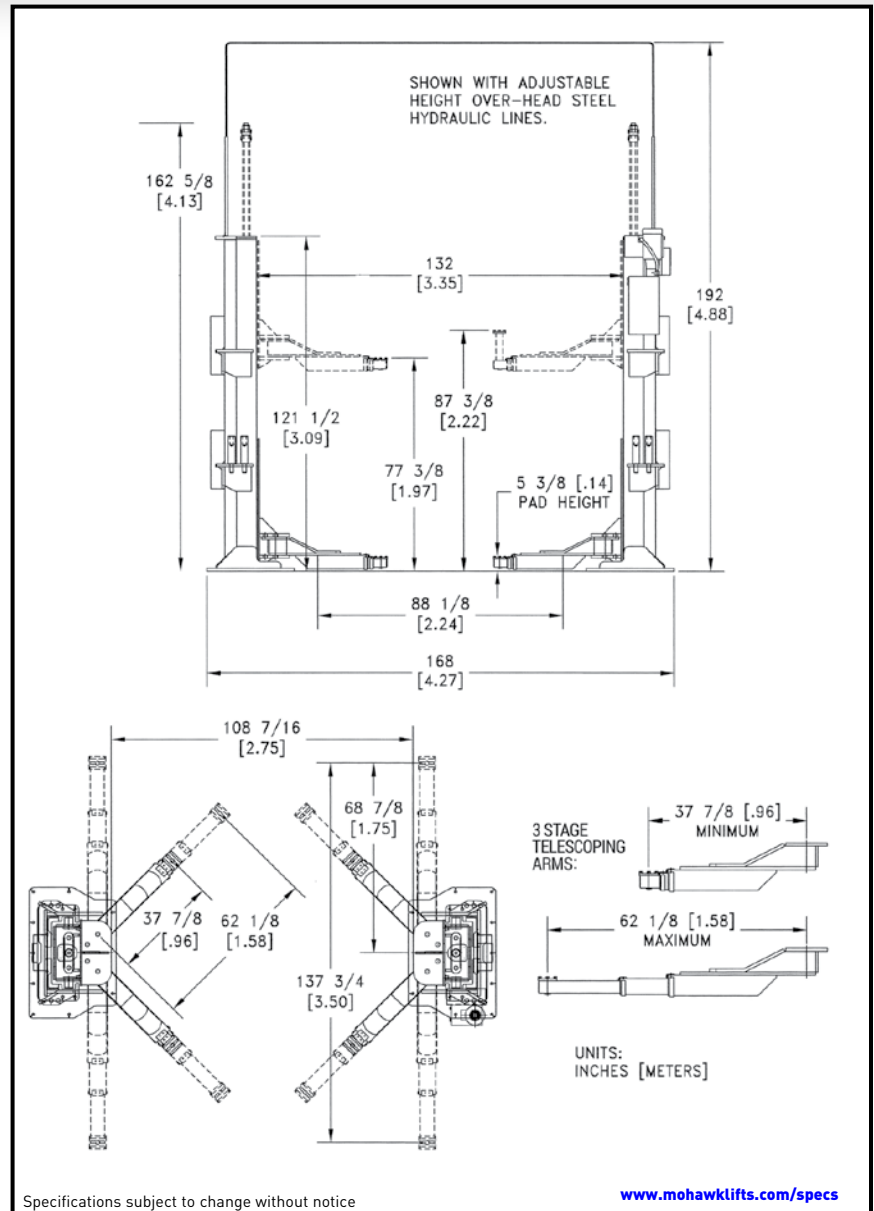


MODEL TP-20/TP-20 WB WIDE BASE SPECIFICATIONS

MODEL:	TP-20/TP-20 WB (wide base)
Capacity:	20,000 lbs. (9,000 Kg)
Lifting Speed:	90 seconds
Motor Rating:	4 HP/208-230 VAC, single phase (3 phase optional)
Synchronization:	Hydraulic fluid displacement using no chains, cables, or overhead obstructions
Arm Pad Height:	5 3/8" (13.6cm)
Lifting Height:	6' (1.83 m) under arm
Arm Pad Height @ Full Rise:	6' 5 3/8" (1.97m)
Max. Pad Height with Adaptors:	7' 3 3/8" (2.22m)
Overall Width:	14' (4.27m) (adjustable)
Width Between Posts:	11' (3.35m) (adjustable)
Width Between Carriage:	9' 7/16" (2.75m) (adjustable)
Column Height:	10' 1 1/2" (3.09m)
Max. Cylinder Height:	13' 6 5/8" (4.13m)
Overhead Hydraulic Line:	16' Standard. Optional to any height or routed in floor.
Shipping Weight:	7000 lbs. (3175 Kg)
Concrete Floor Requirements (4000psi):	6 1/2" thick: (18) 3/4" x 6" Wej-it bolts 6" thick: (28) 3/4" x 6" Wej-it bolts
Mechanical Safety Locks:	Automatic every 6"
Hydraulic Safety Systems:	Multi-position , interlocked redundant safety systems
Swing Arm Restraint:	Automatic upon ascent
Cylinders:	2 (1 per column)
5", 7 1/2", 10" Frame Adaptors (stackable):	4 each included - standard
Carriage Bearings:	(16) 5" (12.7cm) diameter (8 per carriage) double-sealed, self lubricating ball bearing rollers
Side Load Bearings:	(8) 4" (10.2cm) diameter (4 per carriage) double-sealed, self lubricating ball bearing rollers
Floor Access Between Posts:	Clear and unobstructed
Warranty:	25 year structural 10 year mechanical + limited life-time cylinder seal warranty



Mohawk builds the best products with the finest materials, to the highest standards. Just compare our lifts. Our staff will assist you with a fleet evaluation, design assistance and answer any technical questions you have. We invite your calls.

Mohawk lifts are manufactured in compliance with the following standards: ALI, ANSI, ASME, AISI, ASTM, ASA, NEC, AWG, NEMA.

MEETS CURRENT NATIONAL ANSI (ANSI/ALI ALCTV) CODE FOR LIFTS.



**Learn how our two post vehicle
lifts compare to the competition.**
mohawklifts.com/dare2compare

MOHAWK LIFTS

AVAILABLE UNDER DISCOUNTED GOVERNMENT
CONTRACT IN ALL 50 STATES

Mohawk Lifts, LLC.
P.O. Box 110
65 Vrooman Ave
Amsterdam, NY 12010
(800) 833-2006
(518) 842-1431
FAX: (518) 842-1289
www.mohawklifts.com



DISTRIBUTED BY: