

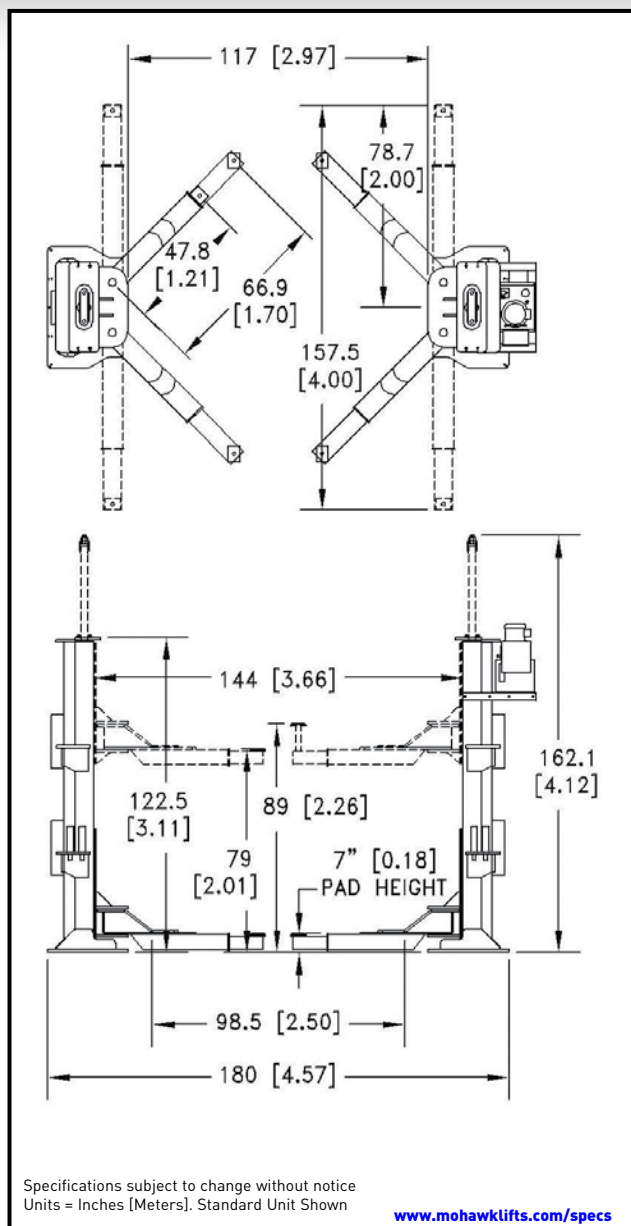
MODELS TP-26 & TP-30 SPECIFICATIONS

Capacity	TP-26: 26,000 Lbs. (11793.41 Kg) TP-30: 30,000 Lbs. (13607.78 Kg)
Lifting speed	135 seconds
Motor rating	TP-26/30: 5 HP 208-230v or 440-480v 3 Phase
Arm Pad height	TP-26/30: 7" (20.32 cm) minimum
Lifting height (Stroke)	6' (1.83 m)
Arm height @ full rise	6' 7" (2.01 m)
Max. Pad height with Adaptors	7' 5" (2.26 m)
Overall width	15' (4.57 m) (wider base model 17' or 5.18 m)
Width between Posts	12' (3.66 m)
Width between Carriage	9' 9" (2.97 m)
Column height	11' (3.35 m)
Max. Cylinder height	13' 6 1/8" (4.12 m)
Overhead Hydraulic Line	Adjustable to any height or routed in floor
Shipping weight	TP-26: 8880 Lbs. (4027.90 Kg) TP-30: 9300 Lbs. (4218.41 Kg)
Concrete floor requirements	TP-26/30 WB: 8" of 4000 psi concrete TP-26/30: 12" of 4000 psi concrete
Anchoring system	12" floor: (18) 1"x 10" Wej-it bolts 8" floor: (28) 1"x 8" Wej-it bolts
Lift synchronization	Hydraulic Fluid Displacement using no chains, cables nor overhead obstructions
Mechanical Safety Locks (single point air lock release)	Multi-position, interlocked redundant safety systems.
Hydraulic Safety System	Automatic: all position
Swing Arm Restraints	Automatic engaging upon ascent
Cylinders	2 (1 per column)
5", 7 1/2", 10" Frame Adaptors (Stackable)	4 each, included as standard equipment
Carriage Bearings	(16) 5" (12.7 cm) diameter (8 per carriage) Double sealed self lubricating
Thrust Bearings	(8) 5" (12.7 cm) diameter (4 per Carriage) Double sealed self lubricating
Floor access between Posts	Clear and unobstructed
Warranty	25 year structural, 10 year mechanical + limited lifetime cylinder seal warranty

Mohawk builds the best products with the finest materials, to the highest standards. Just compare our lifts. Our staff will assist you with a fleet evaluation, design assistance and answer any technical questions you have. We invite your calls.

Mohawk lifts are manufactured in compliance with the following standards:
ALI, ANSI, ASME, AISI, ASTM, ASA, NEC, AWG, NEMA.

MEETS CURRENT NATIONAL ANSI (ANSI/ALI ALCTV) CODE FOR LIFTS.



For more detailed product information read this book at www.mohawklifts.com.

MOHAWK LIFTS

Mohawk Lifts, LLC.
P.O. Box 110
65 Vrooman Ave
Amsterdam, NY 12010
(800) 833-2006
(518) 842-1431
FAX: (518) 842-1289
www.mohawklifts.com

AVAILABLE UNDER DISCOUNTED GOVERNMENT
CONTRACT IN ALL 50 STATES



DISTRIBUTED BY: