

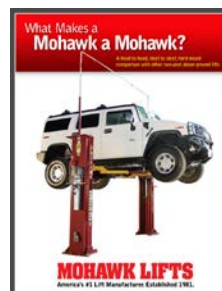
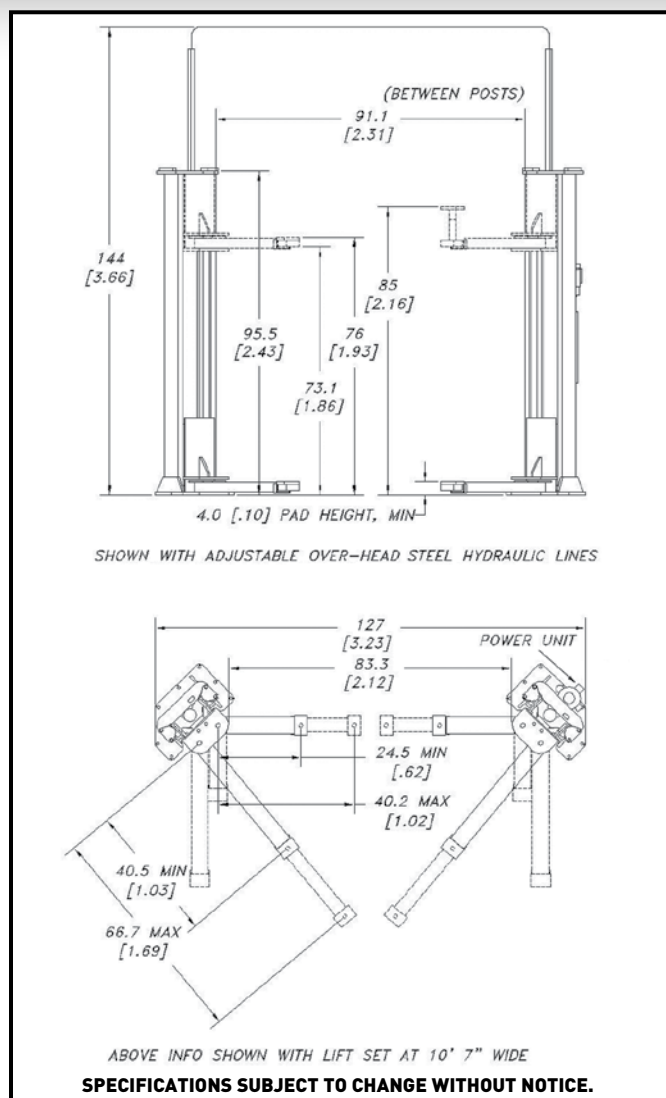
MODEL A-7 SPECIFICATIONS

Capacity:	7,000 lbs. (3175.2 kg)
Lifting Speed:	45 sec.
Motor Rating:	2 HP/208-230V, Single-phase (3Ø optional)
Synchronization:	Hydraulic fluid displacement using no chains, cables, or overhead obstructions
Arm Pad Height:	4" (10.2 cm) min.
Lifting Height (Stroke):	6' (1.83 m)
Arm Height at Full Rise:	6'4" (1.93m)
Lift Pad Height with Adaptors:	7' 1" (2.16 m)
Overall Width:	10' 7" (3.23 m)
Width Between Posts:	7' 7 1/8" to 8' 1 1/8" (2.46 m)
Width Between Lifting Arms:	6' 11 3/8" (2.12 m) to 7' 5 3/8" (2.26m)
Column Height:	7' 11 1/2" (2.43 m)
Overhead Hydraulic Line Height:	12' (3.66 m) Standard (adjustable to accommodate any height ceiling or routed in-floor)
Lift Weight:	2000 lbs. (907.2 kg)
Concrete Floor Requirements:	4000 psi (27579.02 kPa) mix 4 1/2" (11.43 cm) depth
Anchoring System: Included	14 3/4"x5" (1.90x12.7 cm) Wej-it bolts
Mechanical Safety Locks:	Automatic; all position starting @ 3" (7.62 cm) off the floor
Hydraulic Safety Systems:	Automatic; all position
Swing Arm Restraints:	Automatic upon ascent (starting at 4")
Cylinders:	2 (1 per column)
Drive System:	#646 leaf chain routed over cylinder
3" Truck Adaptors (stackable):	4 included as standard equipment
6" Truck Adaptors (stackable):	4 included as standard equipment
Steel Carriage Bearings:	8 per carriage, double sealed, self-lubricating
Floor Access Between Posts:	Clear and unobstructed
Warranty:	25 years structural, 10 year mechanical, plus limited lifetime cylinder seal warranty

Mohawk builds the best products with the finest materials, to the highest standards. Just compare our lifts. Our staff will assist you with a fleet evaluation, design assistance and answer any technical questions you have. We invite your calls.

Mohawk lifts are manufactured in compliance with the following standards: ALI, ANSI, ASME, AISI, ASTM, ASA, NEC, AWG, NEMA.

MEETS CURRENT NATIONAL ANSI CODE FOR LIFTS.



For more detailed product information read this book at www.mohawklifts.com.

MOHAWK LIFTS

Mohawk Lifts, LLC.
P.O. Box 110
65 Vrooman Ave
Amsterdam, NY 12010
(800) 833-2006
(518) 842-1431
FAX: (518) 842-1289
www.mohawklifts.com

AVAILABLE UNDER DISCOUNTED GOVERNMENT
CONTRACT IN ALL 50 STATES



DISTRIBUTED BY: