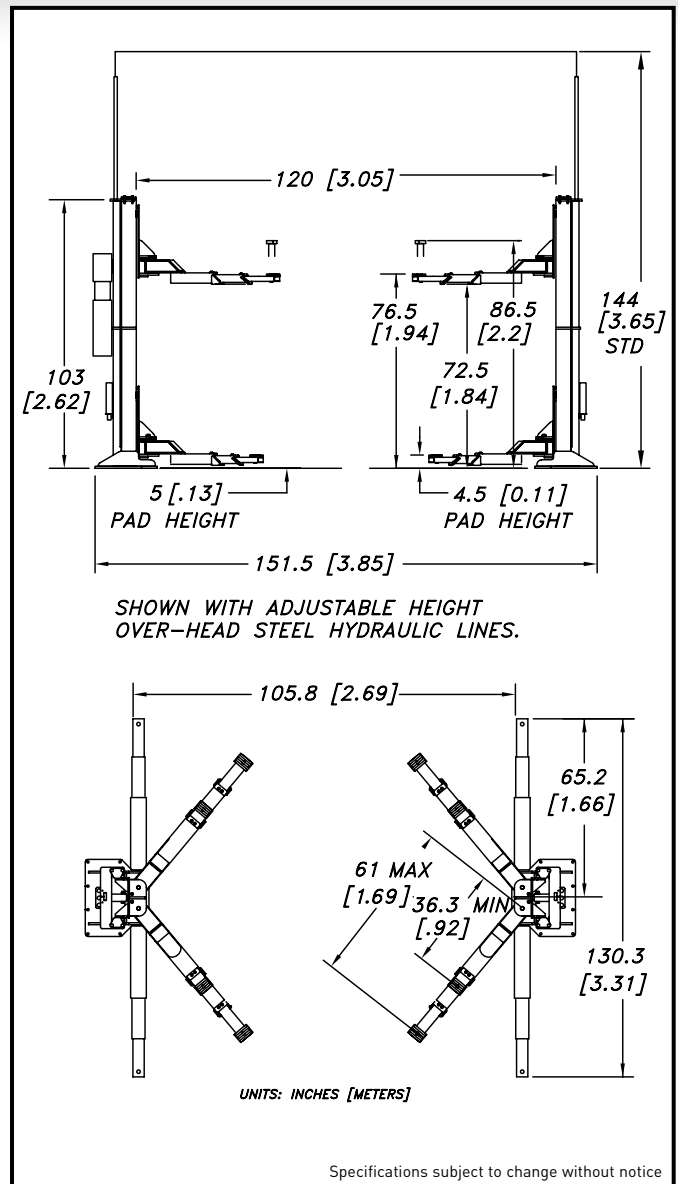


# MODEL LC-12-3SA SPECIFICATIONS

<b>Capacity:</b>	12,000 lbs. (5,443.11 kg)
<b>Lifting Speed:</b>	80 seconds at full load (faster with lighter vehicles)
<b>Motor Rating:</b>	2.5 HP/208-230V, Single-phase (3ø optional)
<b>Synchronization:</b>	Hydraulic fluid displacement using no chains, cables, or overhead obstructions
<b>Arm Pad Height:</b>	5" (12.7 cm) min.
<b>Lifting Height:</b>	6' (1.83 m) under arm
<b>Lift Pad Height @ Full Rise:</b>	6' 5" (1.96 m)
<b>Lift Pad Height @ Full Rise w/Adaptors:</b>	7' 3" (2.21 m)
<b>Overall Width:</b>	12' 7" (3.84 m) ( <b>adjustable</b> )
<b>Width Between Posts:</b>	10' (3.05 m) ( <b>adjustable</b> )
<b>Width Between Lifting Arms:</b>	8' 10" (2.69 m) ( <b>adjustable</b> )
<b>Column Height:</b>	8' 7" (2.62 m)
<b>Overhead Hydraulic Line Height:</b>	12' (3.66 m) Standard ( <b>adjustable</b> to accommodate any height ceiling or routed in-floor)
<b>Weight:</b>	2900 lbs. (1,315.42 kg)
<b>Concrete Floor Requirements:</b>	4000 psi (27579.02 kPa) mix 6 1/2" (16.51 cm) depth
<b>Anchoring System: Included</b>	(16) 3/4"x6" (1.9x15.2 cm) bolts
<b>Mechanical Safety Locks:</b>	<b>Automatic; all position</b> starting ground level
<b>Hydraulic Safety Systems:</b>	<b>Automatic; all position</b>
<b>Swing Arm Restraints:</b>	<b>Automatic</b> upon ascent
<b>Cylinders:</b>	2 (1 per column)
<b>Drive System:</b>	#BL-848 leaf chain routed over cylinder
<b>5" Frame Adaptors (stackable):</b>	4 included as standard equipment
<b>7 1/2" Frame Adaptors (stackable):</b>	4 included as standard equipment
<b>10" Frame Adaptors (stackable):</b>	4 included as standard equipment
<b>4" Steel Carriage Bearings:</b>	8 per carriage, double sealed, self-lubricating
<b>Floor Access Between Posts:</b>	Clear and unobstructed
<b>Warranty:</b>	<b>25 years structural, 10 year mechanical, plus limited lifetime cylinder seal warranty</b>



Mohawk builds the best products with the finest materials, to the highest standards. Just compare our lifts. Our staff will assist you with a fleet evaluation, design assistance and answer any technical questions you have. We invite your calls.

Mohawk lifts are manufactured in compliance with the following standards: ALI, ANSI, ASME, AISI, ASTM, ASA, NEC, AWG, NEMA.

MEETS CURRENT NATIONAL ANSI CODE FOR LIFTS.



**Learn how our two post vehicle lifts compare to the competition.**  
[mohawklifts.com/dare2compare12k](http://mohawklifts.com/dare2compare12k)

## MOHAWK LIFTS

Mohawk Lifts, LLC.  
P.O. Box 110  
65 Vrooman Ave  
Amsterdam, NY 12010  
(800) 833-2006  
(518) 842-1431  
FAX: (518) 842-1289  
[www.mohawklifts.com](http://www.mohawklifts.com)

AVAILABLE UNDER DISCOUNTED GOVERNMENT CONTRACT IN ALL 50 STATES



**DISTRIBUTED BY:**