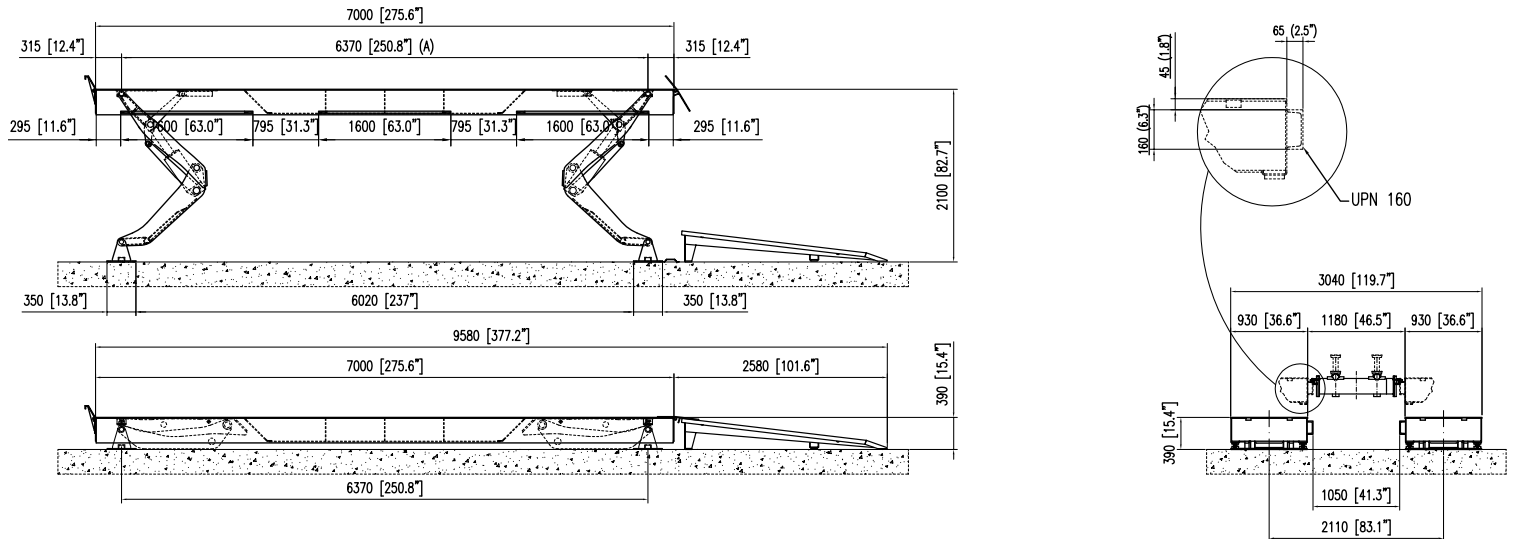


VERTICAL RISE LIFT SPECIFICATIONS

MOHAWK MODEL: V-085-C-235 / 85,000 LB. LIFT WITH 23' LONG RUNWAY



*SPECIFICATIONS SUBJECT TO CHANGE WITHOUT NOTICE.

	TYPE A	TYPE B	TYPE C
Capacities (lbs.)	35,000-64,000	77,000	85,000-99,000
Track Lengths	23'- 48' (other lengths also available)		
Approach Ramp length	101.6" - standard		
Lifting Height	79.5"	80.4"	82.7"
Lowered Height	14.2"	14.2"	15.4"
Track Width	30"		36.6"
Overall Width Std.	106.4"		119.7"
Concrete Floor Requirements	Minimum - 6" / 4000 PSI		
Air Pneumatic	60 - 120 PSI		
Width Between Track Std.	46.5" (adjustable)		
Lifting Speed	70 Seconds (faster with lighter load)		

POWER UNIT OPTIONS	
Voltage	Amps
200-208	33
230-240	29
400	17
460-480	15
550-575	13

All of these motors generate up to 7.5 KiloWatts of power, 10 HP, and operate off of 60 Hz 3-Phase.

- OPTIONAL EQUIPMENT**
- Rolling Jack/Jacking Platforms
 - Alignment Turntables/Cutouts
 - Track Lighting
 - Air/Hydraulic Tire Dolly
 - Stainless Steel Bases
 - Galvanized and Wash Bay Finish
 - Drive Thru Ramps
- SM = Surface Mount Model**
FM = Flush Mount Model

Mohawk builds the best products with the finest materials, to the highest standards. Just compare our lifts. Our staff will assist you with a fleet evaluation, design assistance and answer any technical questions you have. We invite your calls.

Mohawk lifts are manufactured in compliance with the following standards: ALI, ANSI, ASME, AISI, ASTM, ASA, NEC, AWG, NEMA.

MEETS CURRENT NATIONAL ANSI CODE FOR LIFTS.

MOHAWK LIFTS

AVAILABLE UNDER DISCOUNTED GOVERNMENT CONTRACT IN ALL 50 STATES

Mohawk Lifts, LLC.
P.O. Box 110
65 Vrooman Ave
Amsterdam, NY 12010
(800) 833-2006
(518) 842-1431
FAX: (518) 842-1289
www.mohawklifts.com



DISTRIBUTED BY: