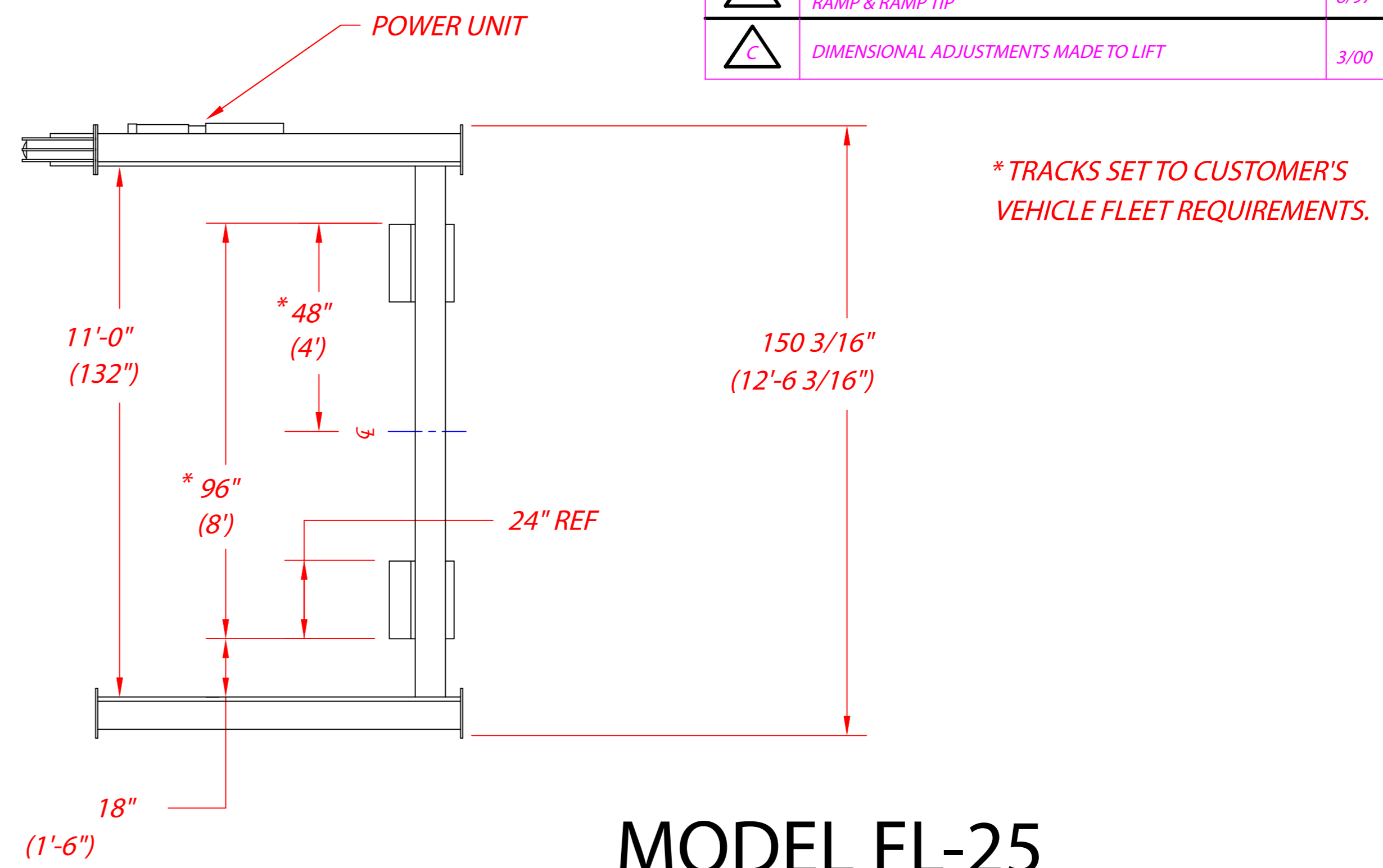
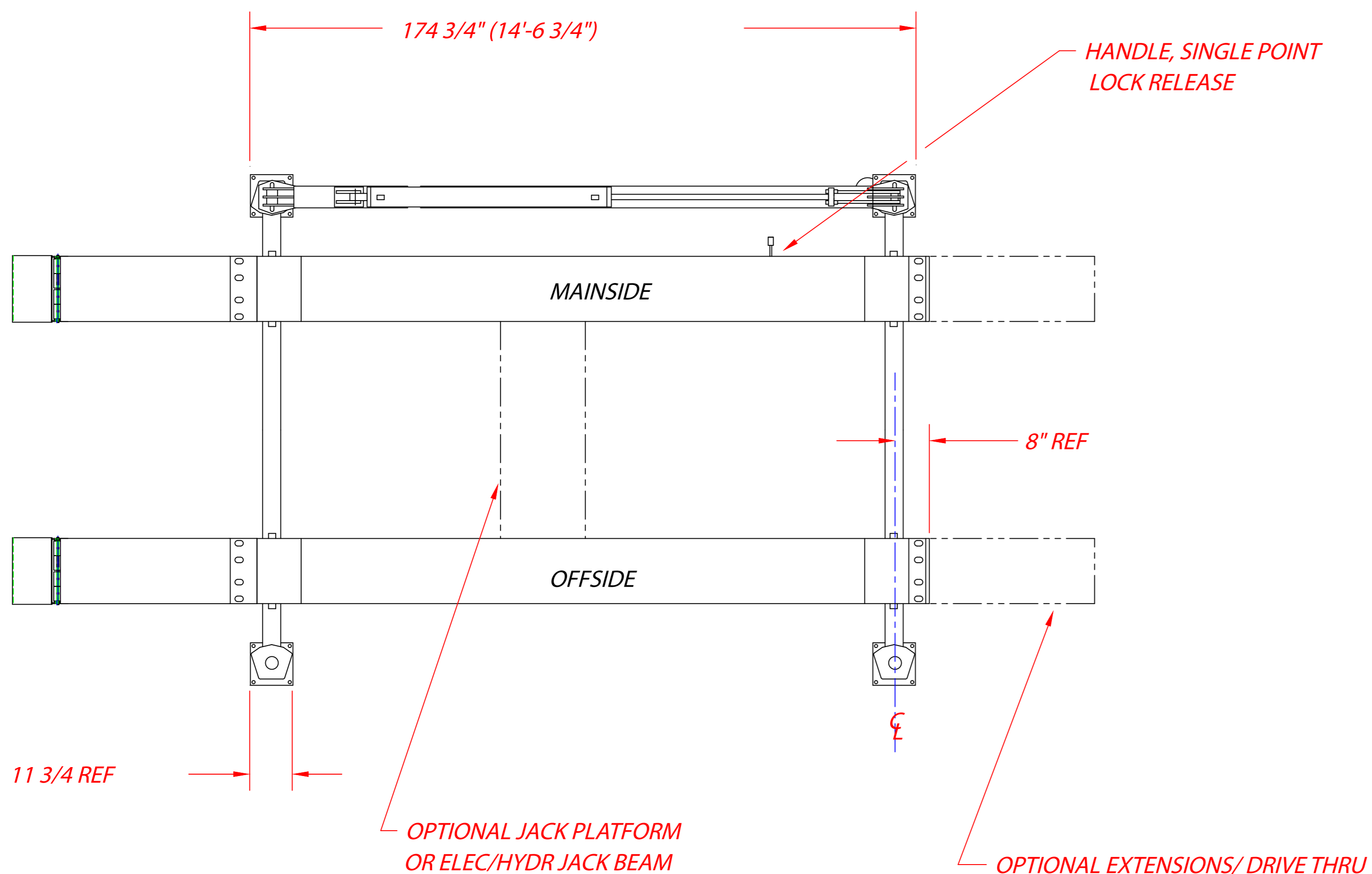


REV.	DESCRIPTION	DATE	BY	APP'D.
A	OVERALL WIDTH WAS 11'-9 3/16" CLEARANCE BETWEEN POSTS WAS 10'-3"	8/97	R.V.	
B	OVERALL LENGTHS REVISED PER NEW RAMP & RAMP TIP	8/97	R.V.	
C	DIMENSIONAL ADJUSTMENTS MADE TO LIFT	3/00	clak	

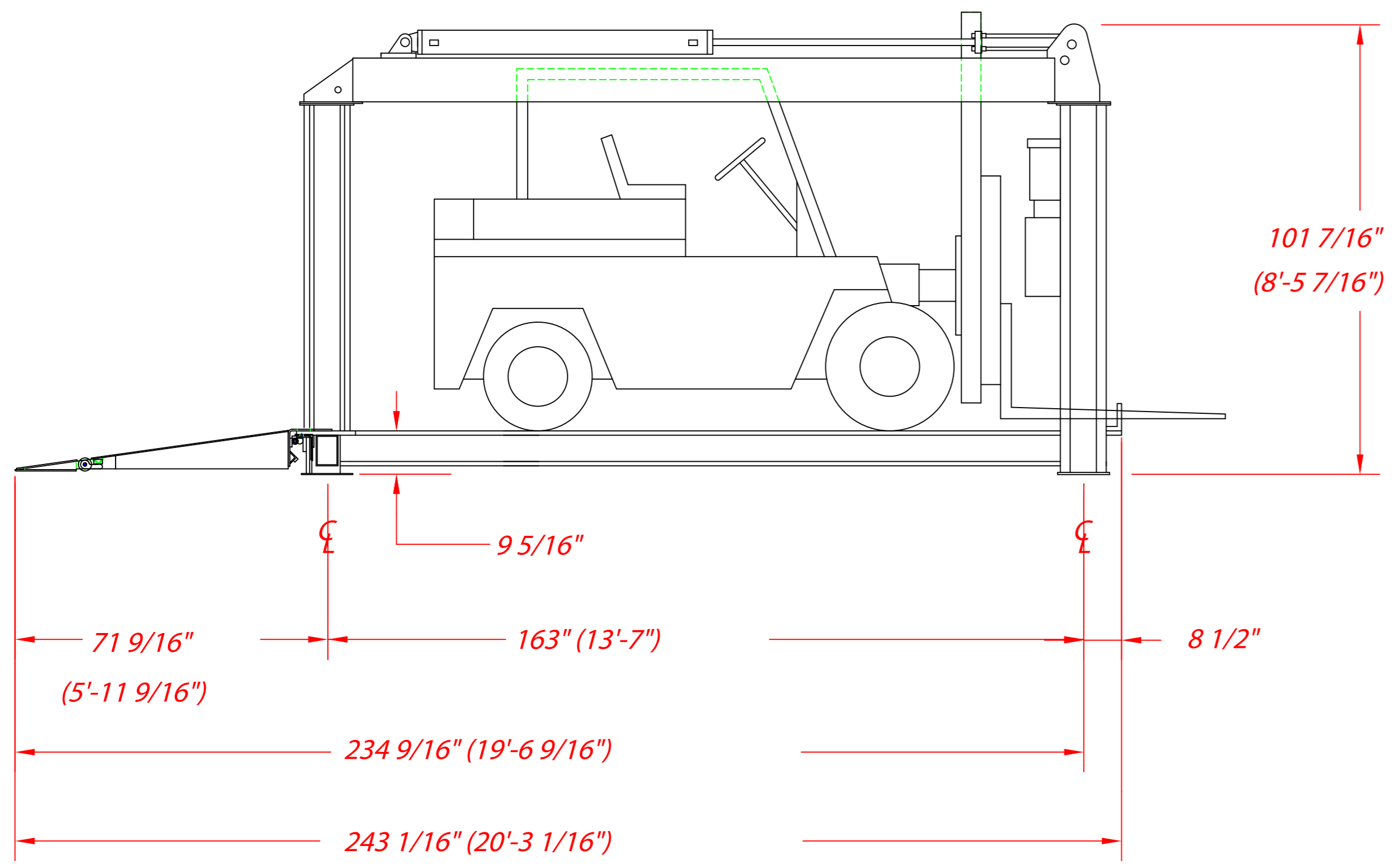


MODEL FL-25

4-POST TRACK FORK TRUCK LIFT
CAPACITY: 25,000 LBS

SPECIFICATIONS:

CAPACITY	25,000 LB
LIFTING SPEED	120 SECONDS
MOTOR RATING	2 HP, 208-230 VAC SINGLE PHASE (3 PHASE OPTIONAL)
LIFTING MECHANISM	5" HYDRAULIC CYLINDER ATTACHED TO (4) #646 LEAF CHAINS
OVERALL LENGTH	20'-3 1/16"
OVERALL WIDTH	12'-6 3/16"
LIFTING STROKE	5'
TRACK WIDTH	24" STANDARD
CLEARANCE BETWEEN POSTS	11'-0"
MECHANICAL SAFETY RELEASE	SINGLE POINT
MECHANICAL SAFETY LOCKS	ALL POSITION
BACK-UP HYDRAULIC SAFETY SYSTEMS	P.C. FLOW CONTROLS & VELOCITY FUSES
WEIGHT	4200 LB
AVAILABLE OPTIONS	3' TRACK EXTENSIONS (FRONT, REAR, OR BOTH)
	3 PHASE POWER FOR 208-230, 460, & 575 VAC @ 60 HZ
	ALIGNMENT PACKAGE
	RJ-25 - ROLLING ELECTRIC/HYDRAULIC JACKING BEAM
	115 VAC DUPLEX OUTLET AT POWER UNIT
	ELECTRIC SOLENOID DOWN VALVE
	RUNWAY LIGHTING
	THIRD WHEEL OPTION
	JP-25 - ROLLING JACKING PLATFORM
	OIL DRAIN PAN
	OBSTACLE SENSOR PACKAGE
	LOCKABLE MAIN SWITCH
	AUDIBLE DESCENT WARNING
	DRIVE THROUGH RAMPS



MOHAWK RESOURCES LTD.
 P.O. BOX 110
 65 VROOMAN AVENUE
 AMSTERDAM, NY 12010
 PHN: (800) 833-2006
 IN NY: (518) 842-1431
 FAX: (518) 842-1289



SHOWN ABOVE WITH 13' TRACKS
 NOTE: MOHAWK RESOURCES, LTD. RESERVES THE RIGHT TO MAKE CHANGES WITHOUT NOTICE.

NOTICE OF CONFIDENTIAL INFORMATION
 INFORMATION CONTAINED HEREIN IS CONFIDENTIAL AND PROPERTY OF MOHAWK RESOURCES LTD. WHERE DRAWING IS FURNISHED TO OTHERS IT SHALL BE USED SOLELY FOR PURPOSES OF INSPECTION, INSTALLATION, OR MAINTENANCE. THE INFORMATION SHALL NOT BE USED OR DISCLOSED TO THE RECIPIENT FOR ANY OTHER PURPOSES WHATSOEVER.

NOTES:
 1. REMOVE ALL SHARP CORNERS & EDGES.
 2. UNLESS OTHERWISE SPECIFIED, SURFACE FINISH TO BE 125 RMS.
 3. WELDING MEDIUM SHALL CONFORM TO AWS SPECIFICATIONS TO E-70XX ELECTRODES OR E-70T1 CODE 5.3 FLUX CORE WIRE ONLY.

TOLERANCES:
 ANGULAR: ± 1 °
 FRACTIONAL: ± .030
 DECIMAL: ± .030
 0.XXX: ± .005

FILE NAME: FL-25A

SCALE: NONE
 DRAWN: R.V.
 CHECKED: APPROVED
 DATE: 8/98
 WEIGHT: 4200 LB.

MOHAWK RESOURCES LTD.
 TITLE: FORK TRUCK LIFT ILLUSTRATION & SPECS, FL-25A
 FROM: DRAWING NUMBER FL-25A