

| REV. | DESCRIPTION | DATE | BY | APP'D. |
|--------------------|--|------|-----|--------|
| <div>△ A</div> | POWER UNIT RELOCATED FROM SIDE OF LEG ASSEMBLY TO BACK OF LEG ASSEMBLY | 5/10 | dak | |

MODEL TP-26A-WB

SYMMETRICAL 2-POST LIFT
CAPACITY: 26,000 LBS

NOTE: THIS LIFT HAS DEEPER BASE PLATES TO
ACCOMODATE 8" CONCRETE SLABS.



THIS LIFT HAS BEEN TESTED AND CERTIFIED BY A NATIONALLY RECOGNIZED TESTING
LABORATORY (NRTL) TO MEET THE REQUIREMENTS OF U.L. STANDARD 201 FOR GARAGE
EQUIPMENT AND ANSI/ALI ALCTV-2011 FOR AUTOMOTIVE LIFT CONSTRUCTION.

SPECIFICATIONS:

CAPACITY.....26,000 LBS.
LIFTING SPEED.....142 SECONDS
MOTOR RATING.....5 HP, 220 VAC, 3 PHASE
SYNCHRONIZATION.....HYDRAULIC FLUID DISPLACEMENT USING NO CHAINS,
CABLES NOR OVERHEAD OBSTRUCTIONS
MINIMUM LIFTING PAD HEIGHT.....7 1/8"
LIFTING HEIGHT (STROKE).....6 FEET
ARM HEIGHT @ FULL RISE.....6'-7 1/8"
MAX. PAD HEIGHT WITH ADAPTERS.....7'-5 5/8"
OVERALL WIDTH.....16'-10"
WIDTH BETWEEN POSTS.....12 FEET
WIDTH BETWEEN CARRIAGE.....9'-9"
COLUMN HEIGHT.....10'-1 1/2"
MAX. CYLINDER HEIGHT.....13'-6 5/8"
OVERHEAD HYDRAULIC LINE HEIGHT.....16 FEET OPTIONAL
SHIPPING WEIGHT.....8000 LBS. APPROX.
ANCHORING SYSTEM.....(28) 1" DIA X 8" WEJ-IT ANCHORS IN 8" MINIMUM FLOOR
MECHANICAL SAFETY LOCKS.....MULTI-POSITION EVERY 6"
MECHANICAL SAFETY RELEASE.....SINGLE POINT LOCK RELEASE @ CONTROL
HYDRAULIC SAFETY SYSTEM.....AUTOMATIC: ALL POSITION
SWING ARM LOCKS.....AUTOMATIC LOCKING UPON ASCENT
CYLINDERS.....2 (1 PER COLUMN)
5" FRAME ADAPTERS.....4 INCLUDED AS STANDARD EQUIPMENT (STACKABLE)
7 1/2" FRAME ADAPTERS.....4 INCLUDED AS STANDARD EQUIPMENT (STACKABLE)
10" FRAME ADAPTERS.....4 INCLUDED AS STANDARD EQUIPMENT (STACKABLE)
CARRIAGE BEARINGS.....(16) 5" DIAMETER (8 PER CARRIAGE)
DOUBLE SEALED SELF LUBRICATING
THRUST BEARINGS.....(8) 4" DIAMETER (4 PER CARRIAGE)
DOUBLE SEALED SELF LUBRICATING
FLOOR ACCESS BETWEEN POSTS.....CLEAR AND UNOBSTRUCTED
WARRANTY.....5 YEARS *
1 YEAR ON POWER UNIT, ELECTRICAL, PNEUMATIC COMPONENTS
EXCLUSIVE EXTENDED CYLINDER WARRANTY **

* SEE SPECIFIC MOHAWK WARRANTY FOR DETAILS.
** SEE EXCLUSIVE EXTENDED CYLINDER WARRANTY FOR DETAILS.



MOHAWK RESOURCES LTD.

P.O. BOX 110
65 VROOMAN AVENUE
AMSTERDAM, NY 12010

PHN: (800) 833-2006
IN NY: (518) 842-1431
FAX: (518) 842-1289

NOTE: MOHAWK RESOURCES, LTD. RESERVES THE RIGHT TO MAKE CHANGES WITHOUT NOTICE.

NOTICE OF CONFIDENTIAL INFORMATION

INFORMATION CONTAINED HEREIN IS CONFIDENTIAL AND PROPERTY OF
MOHAWK RESOURCES LTD.. WHERE DRAWING IS FURNISHED TO OTHERS
IT SHALL BE USED SOLELY FOR PURPOSES OF INSPECTION, INSTALLATION,
OR MAINTENANCE. THE INFORMATION SHALL NOT BE USED OR DISCLOSED
BY THE RECIPIENT FOR ANY OTHER PURPOSES WHATSOEVER.

NOTES:

1. REMOVE ALL SHARP CORNERS & EDGES.
2. UNLESS OTHERWISE SPECIFIED, SURFACE
FINISH TO BE 125 RMS.
3. WELDING MEDIUM SHALL CONFORM TO AWS
SPECIFICATIONS TO E-70XX ELECTRODES OR
E-70TI CODE 5.3 FLUX CORE WIRE ONLY.

TOLERANCES:

ANGULAR ± 1 °
FRACTIONAL ± .030
DECIMAL:
0.XXX ± .030
0.XXX ± .005

FILE NAME
TP-26A-WB

026-002-000

NEXT ASSEMBLY

SCALE

3/64

DRAWN

dak

MOHAWK RESOURCES LTD.

CHECKED

APPROVED

TITLE
ILLUSTRATION & SPECS, TP-26A-WB

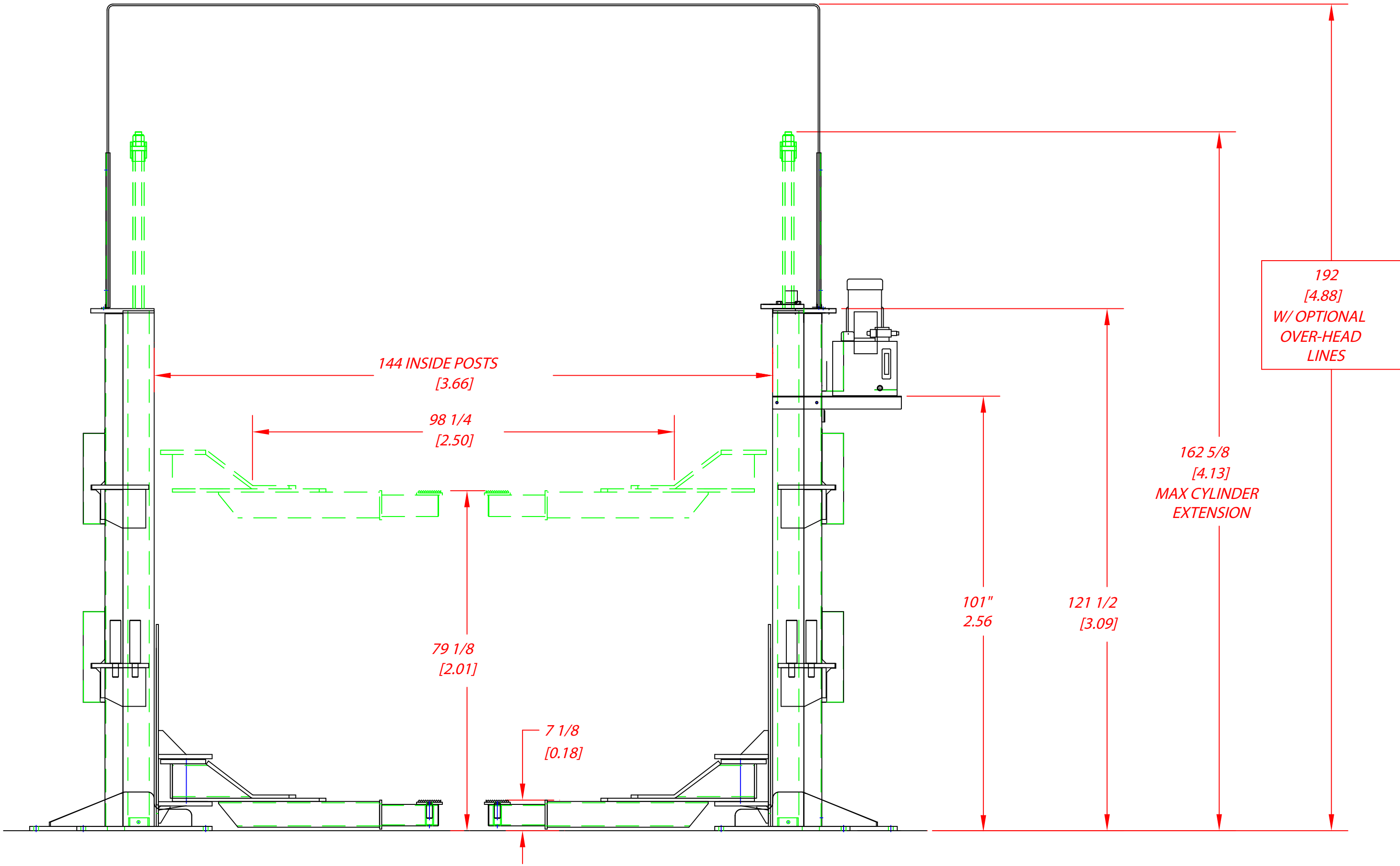
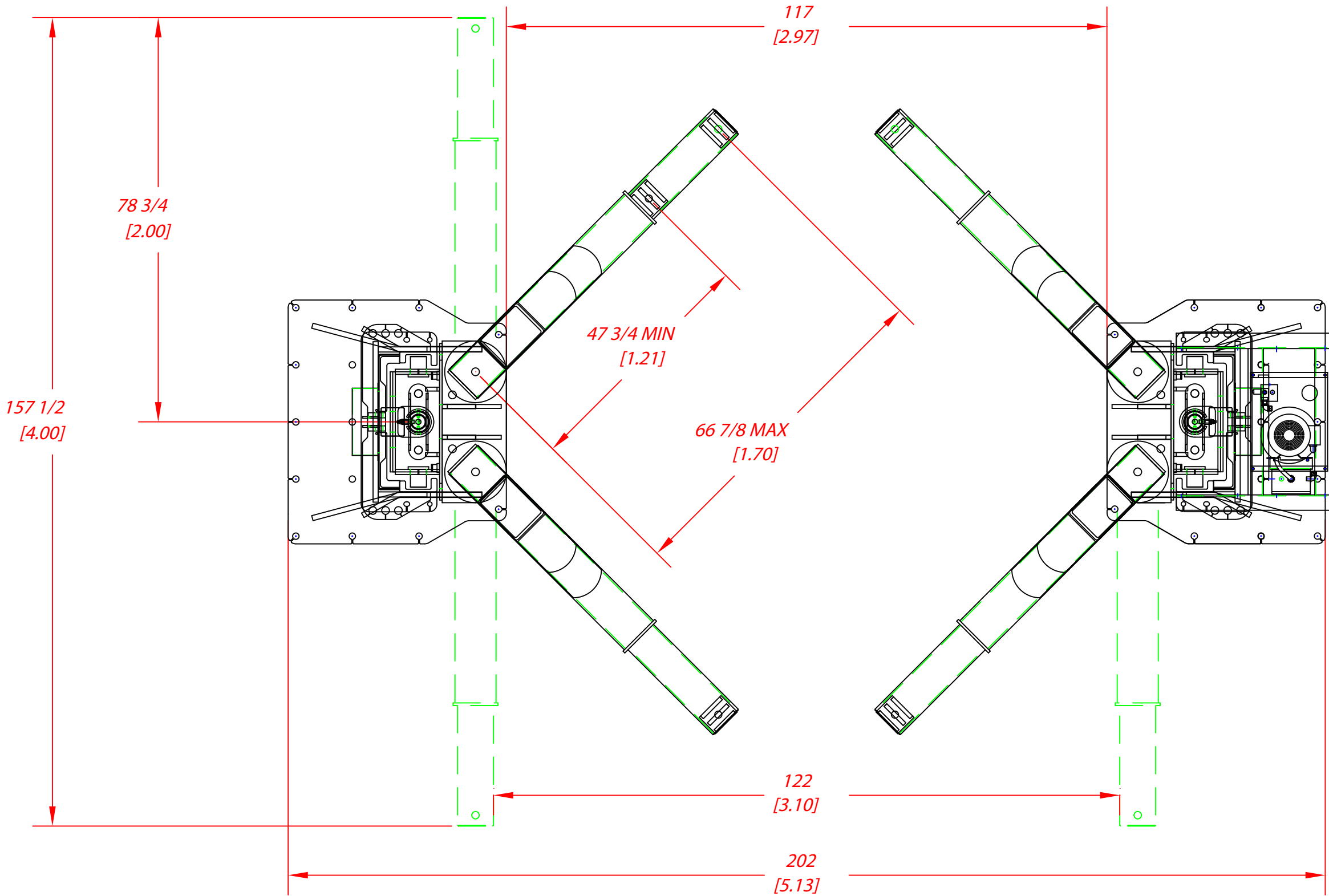
DATE
2/09

WEIGHT
8406

LB.

FROM

DRAWING NUMBER
TP-26A-WB



UNITS = INCH [METERS]

D-SIZE