

REV.	DESCRIPTION	DATE	BY	APP'D.
<div><div></div><div>F</div></div>	ALI VERIFICATION LOGO CHANGE	12/15	CHS	

MODEL TP-30

SYMMETRICAL 2-POST LIFT
CAPACITY: 30,000 LBS



THIS LIFT HAS BEEN TESTED AND CERTIFIED BY A NATIONALLY RECOGNIZED TESTING LABORATORY (NRTL) TO MEET THE REQUIREMENTS OF U.L. STANDARD 201 FOR GARAGE EQUIPMENT AND ANSI/ALI ALCTV-2011 FOR AUTOMOTIVE LIFT CONSTRUCTION.

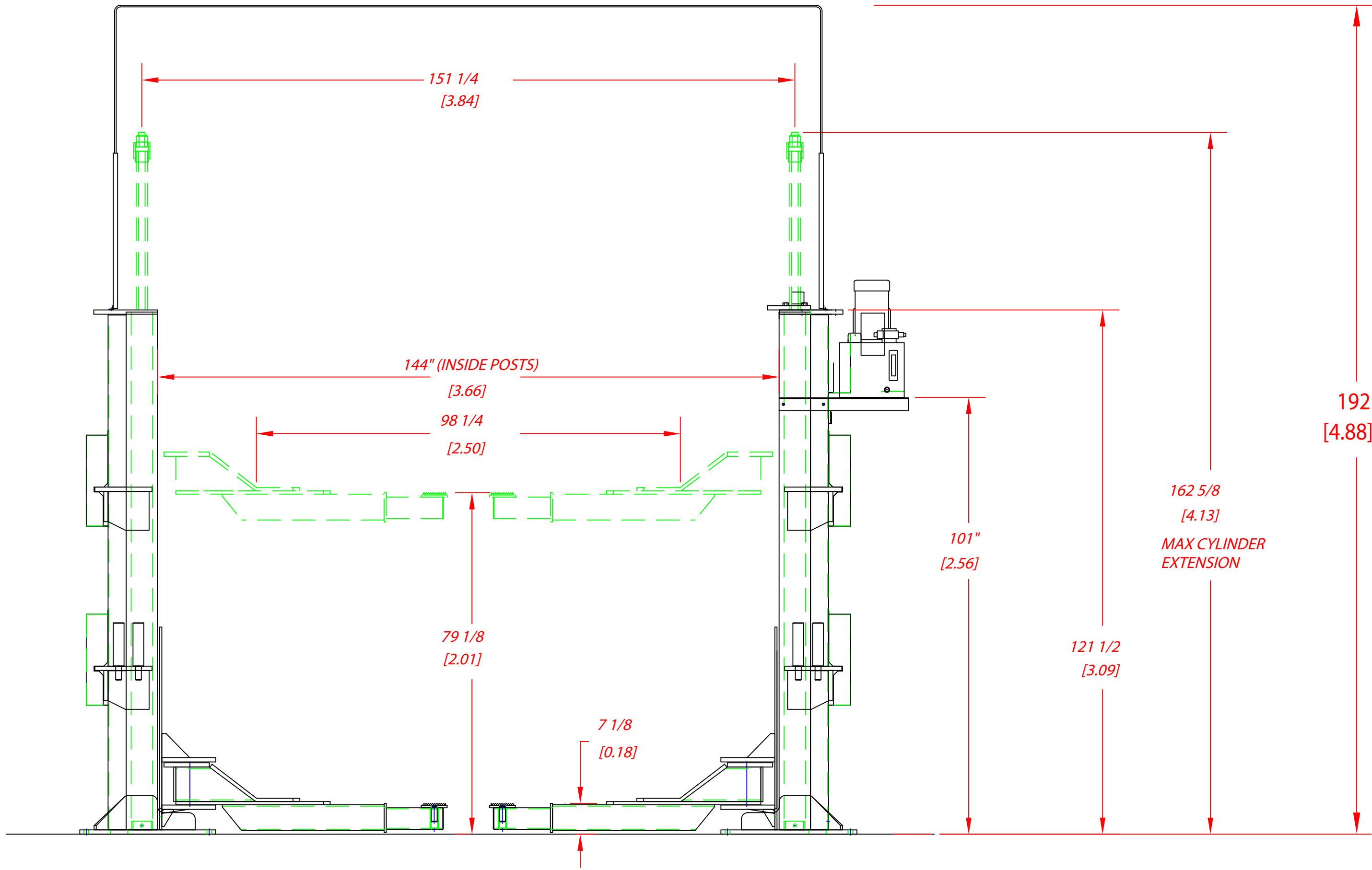
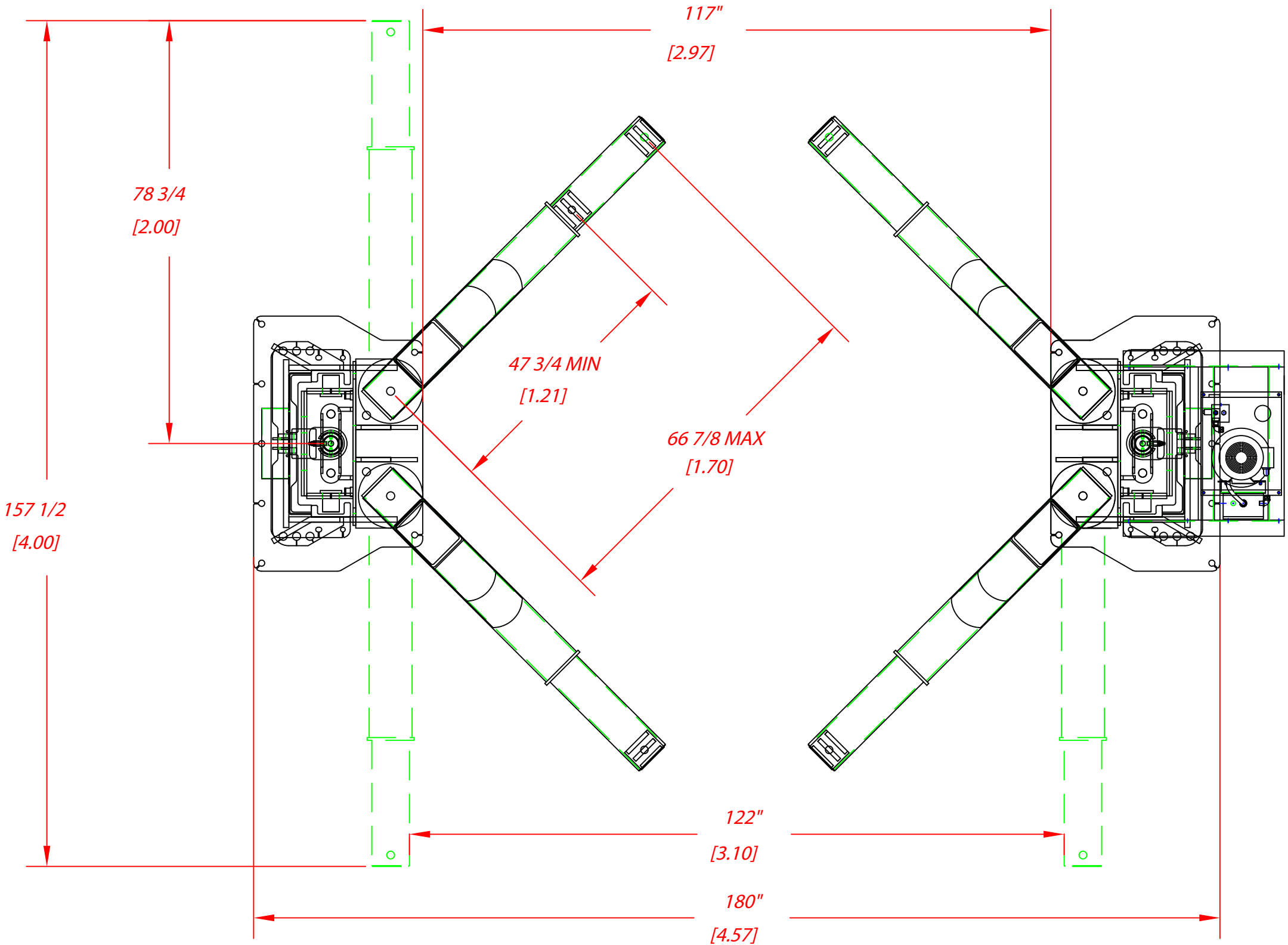
SPECIFICATIONS:

CAPACITY.....30,000 LBS.
LIFTING SPEED.....142 SECONDS
MOTOR RATING.....5 HP, 220 VAC, 3 PHASE
SYNCHRONIZATION.....HYDRAULIC FLUID DISPLACEMENT USING NO CHAINS, CABLES NOR OVERHEAD OBSTRUCTIONS
MINIMUM LIFTING PAD HEIGHT.....7 1/8"
LIFTING HEIGHT (STROKE).....6 FEET
ARM HEIGHT @ FULL RISE.....6'-7 1/8"
MAX. PAD HEIGHT WITH ADAPTERS.....7'-5 5/8"
OVERALL WIDTH.....15 FEET
WIDTH BETWEEN POSTS.....12 FEET
WIDTH BETWEEN CARRIAGE.....9'-9"
COLUMN HEIGHT.....10'-1 1/2"
MAX. CYLINDER HEIGHT.....13'-6 5/8"
OVERHEAD HYDRAULIC LINE HEIGHT.....16 FEET
SHIPPING WEIGHT.....8850 LBS. APPROX.
ANCHORING SYSTEM.....1" DIA X 10" LG WEJ-IT ANCHORS IN 4000 PSI CONCRETE
MECHANICAL SAFETY LOCKS.....MULTI-POSITION EVERY 6"
MECHANICAL SAFETY RELEASE.....SINGLE POINT LOCK RELEASE @ CONTROL
HYDRAULIC SAFETY SYSTEM.....AUTOMATIC: ALL POSITION
SWING ARM LOCKS.....AUTOMATIC LOCKING UPON ASCENT
CYLINDERS.....2 (1 PER COLUMN)
5" FRAME ADAPTERS.....4 INCLUDED AS STANDARD EQUIPMENT (STACKABLE)
7 1/2" FRAME ADAPTERS.....4 INCLUDED AS STANDARD EQUIPMENT (STACKABLE)
10" FRAME ADAPTERS.....4 INCLUDED AS STANDARD EQUIPMENT (STACKABLE)
CARRIAGE BEARINGS.....(16) 5" DIAMETER (8 PER CARRIAGE)
DOUBLE SEALED SELF LUBRICATING
THRUST BEARINGS.....(8) 4" DIAMETER (4 PER CARRIAGE)
DOUBLE SEALED SELF LUBRICATING
FLOOR ACCESS BETWEEN POSTS.....CLEAR AND UNOBSTRUCTED



MOHAWK RESOURCES LTD.
P.O. BOX 110
65 VROOMAN AVENUE
AMSTERDAM, NY 12010
PHN: (800) 833-2006
IN NY: (518) 842-1431
FAX: (518) 842-1289

NOTE: MOHAWK RESOURCES, LTD. RESERVES THE RIGHT TO MAKE CHANGES WITHOUT NOTICE.



UNITS = INCH [METERS]

NOTICE OF CONFIDENTIAL INFORMATION

INFORMATION CONTAINED HEREIN IS CONFIDENTIAL AND PROPERTY OF MOHAWK RESOURCES LTD.. WHERE DRAWING IS FURNISHED TO OTHERS IT SHALL BE USED SOLELY FOR PURPOSES OF INSPECTION, INSTALLATION, OR MAINTENANCE. THE INFORMATION SHALL NOT BE USED OR DISCLOSED BY THE RECIPIENT FOR ANY OTHER PURPOSES WHATSOEVER.

NOTES:

- REMOVE ALL SHARP CORNERS & EDGES.
- UNLESS OTHERWISE SPECIFIED, SURFACE FINISH TO BE 125 RMS.
- WELDING MEDIUM SHALL CONFORM TO AWS SPECIFICATIONS TO E-70XX ELECTRODES OR E-70T1 CODE 5.3 FLUX CORE WIRE ONLY.

TOLERANCES:

ANGULAR: ±1 °
FRACTIONAL: ±.030
DECIMAL: ±.030
0.XX: ±.005
0.XXX: ±.005

FILE NAME
TP-30

NEXT ASSEMBLY

SCALE

3/64

DRAWN

R.V.

MOHAWK RESOURCES LTD.

CHECKED

APPROVED

TITLE
ILLUSTRATION & SPECS, TP-30

DATE
8/98

WEIGHT
8200

LB.

FROM

DRAWING NUMBER
TP-30

